

STATE OF ILLINOIS  
DEPARTMENT OF TRANSPORTATION

F.A. R.T.E.	SECTION	COUNTY	TOTAL SHEETS	SHEET NO.
	D1 APP PAINT PVT MKG 22-10	McHENRY & DuPAGE	5	1
		ILLINOIS		CONTRACT NO. 46574

D-1

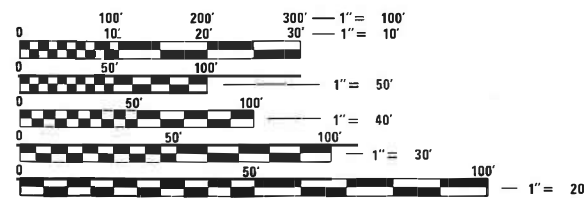
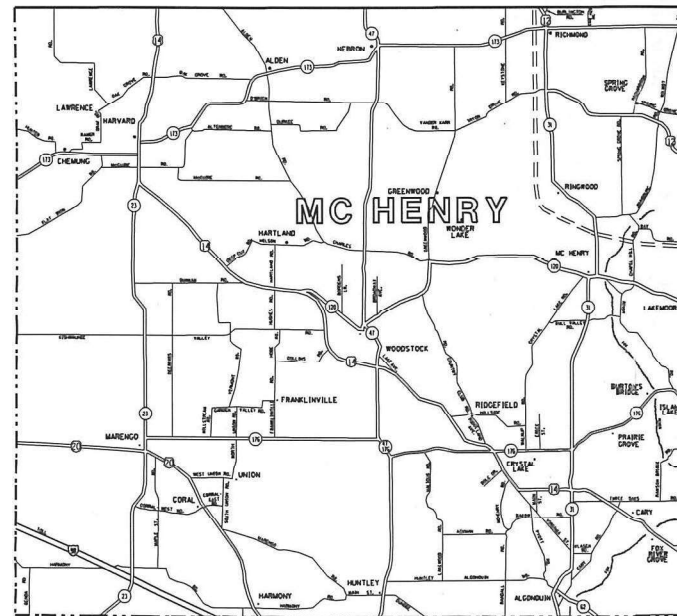
INDEX OF SHEETS:

1. COVER SHEET
2. GENERAL NOTES & STATE STANDARDS
3. SUMMARY OF QUANTITIES
4. DUPAGE COUNTY MAP
5. McHENRY COUNTY MAP

# PROPOSED HIGHWAY PLANS

VARIOUS ROUTES  
D 1 APP PAINT PVT MKG 22-10  
PROJECT  
PAINT PAVEMENT MARKING  
McHENRY & DuPAGE COUNTIES

M-60-010-22



FULL SIZE PLANS HAVE BEEN PREPARED USING STANDARD ENGINEERING SCALES. REDUCED SIZED PLANS WILL NOT CONFORM TO STANDARD SCALES. IN MAKING MEASUREMENTS ON REDUCED PLANS, THE ABOVE SCALES MAY BE USED.

J.U.L.I.E.  
JOINT UTILITY LOCATION INFORMATION FOR EXCAVATION  
1-800-892-0123  
OR 811

STATE OF ILLINOIS  
DEPARTMENT OF TRANSPORTATION

SUBMITTED March 12 20 21  
Jose Rios KRS  
REGIONAL ENGINEER

May 7, 2021 [Signature]  
ENGINEER OF DESIGN AND ENVIRONMENT

May 7, 2021 [Signature]  
DIRECTOR OF HIGHWAYS PROJECT IMPLEMENTATION 13

PRINTED BY THE AUTHORITY  
OF THE STATE OF ILLINOIS

## STATE STANDARDS

- 701301-04 LANE CLOSURE, 2L, 2W, SHORT TIME OPERATIONS
- 701311-03 LANE CLOSURE 2L, 2W MOVING OPERATIONS-DAY ONLY
- 701426-09 LANE CLOSURE, MULTILANE, INTERMITTENT OR MOVING OPER., FOR SPEED  $\geq$  45 MPH
- 701427-05 LANE CLOSURE, MULTILANE, INTERMITTENT OR MOVING OPER., FOR SPEED  $\leq$  40 MPH
- 701901-08 TRAFFIC CONTROL DEVICES
- 781001-04 TYPICAL PAVEMENT MARKINGS

MODEL: Default  
FILE NAME: S:\SIS\Contracts\CAD\CoverSheets for Contracts.dgn

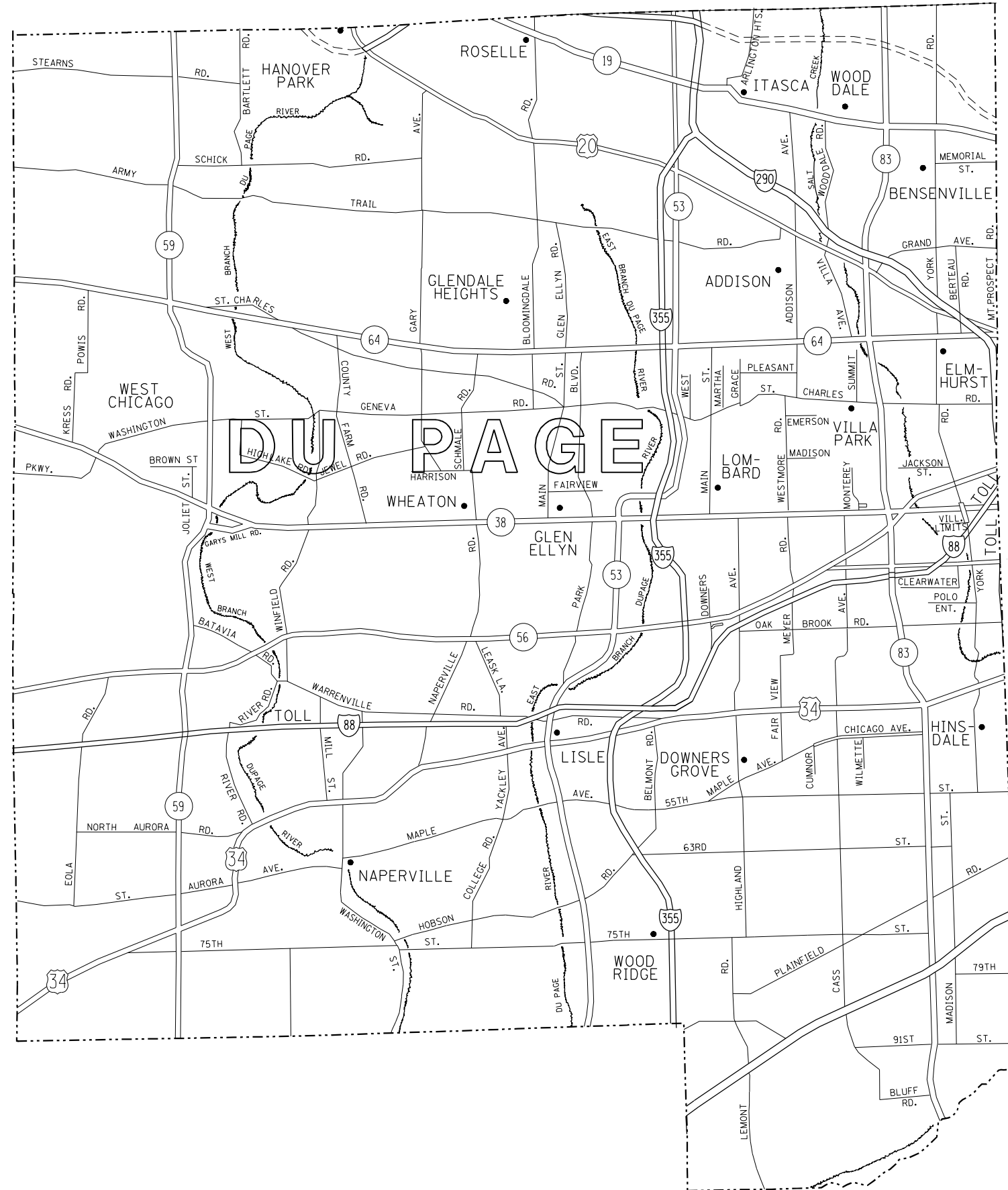
	USER NAME = dargets	DESIGNED -	REVISED -	<b>STATE OF ILLINOIS DEPARTMENT OF TRANSPORTATION</b>	<b>GENERAL NOTES &amp; STATE STANDARDS</b>	F.A. RTE.	SECTION	COUNTY	TOTAL SHEETS	SHEET NO.	REV-SEP
		DRAWN	REVISED				D1 APP PAINT PVT 22-10	MCHENRY & D PAGE	5	2	
	PLOT SCALE = 99.9642' / in.	CHECKED -	REVISED -								
	PLOT DATE = 1/29/2021	DATE	REVISED -		SCALE:		SHEET 2	OF 5	SHEETS	STA.	TO STA.
											ILLINOIS   FED. AID PROJECT

## SUMMARY OF QUANTITIES

NUMBER	ITEM	UNIT	100% STATE URBAN 0021 QUANTITY
78001110	PAINT PAVEMENT MARKING – LINE 4", APPLIED	FOOT	4,000,000
78001130	PAINT PAVEMENT MARKING – LINE 6", APPLIED	FOOT	75,000
78001140	PAINT PAVEMENT MARKING – LINE 8", APPLIED	FOOT	100,000

MODEL Default:  
 FILE Name: S:\Contracts\CAD\CoverSheets for Contracts.dgn

USER NAME = dargets PLOT SCALE = 100.0381' / in. PLOT DATE = 1/29/2021	DESIGNED - DRAWN - CHECKED - DATE -	REVISED - REVISED - REVISED - REVISED -	<b>STATE OF ILLINOIS                  DEPARTMENT OF TRANSPORTATION</b>	<b>SUMMARY OF QUANTITIES</b>	SCALE:	SHEET 3 OF 5 SHEETS STA. TO STA.	F.A. RTE. SECTION COUNTY TOTAL SHEETS SHEET NO.
			D1 APP PAINT PVT 22-10 MCHENRY & DUPAGE CONTRACT NO. 46574		ILLINOIS FED. AID PROJECT		



MODEL: D:\mch\11  
 FILE NAME: S:\S\Contract\CAD\Covers\Sheets for Contract.dwg

USER NAME = dargets	DESIGNED -	REVISD -
PLOT SCALE = 100.0723' / in.	DRAWN -	REVISD -
PLOT DATE = 1/29/2021	CHECKED -	REVISD -
	DATE -	REVISD -

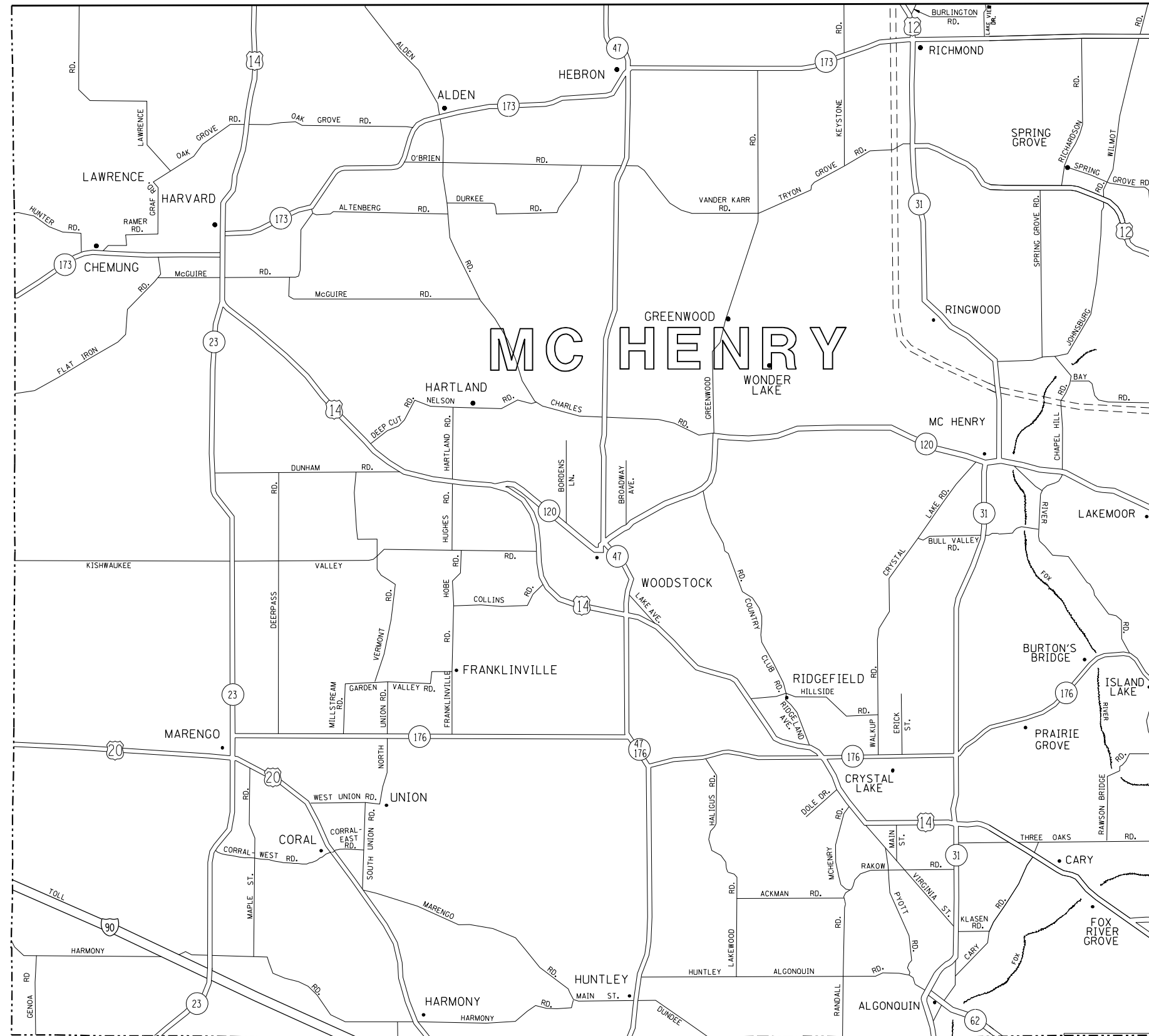
DESIGNED -	REVISD -
DRAWN -	REVISD -
CHECKED -	REVISD -
DATE -	REVISD -

**STATE OF ILLINOIS**  
**DEPARTMENT OF TRANSPORTATION**

**DUPAGE COUNTY MAP**

SCALE: SHEET 4 OF 5 SHEETS STA. TO STA.

F.A. RTE.	SECTION	COUNTY	TOTAL SHEETS	SHEET NO.
	D1 APP PAINT PVT 22-10	MCHENRY & DUPAGE	5	4
CONTRACT NO. 46574				
ILLINOIS FED. AID PROJECT				



MODEL: D:\mch\11  
 FILE NAME: S:\Contract\CAD\CoverSheets for Contracts.dgn

USER NAME = dargets	DESIGNED -	REVISED -
	DRAWN -	REVISED -
PLOT SCALE = 100,0067' / in.	CHECKED -	REVISED -
PLOT DATE = 1/29/2021	DATE -	REVISED -

**STATE OF ILLINOIS**  
**DEPARTMENT OF TRANSPORTATION**

**MCHENRY COUNTY MAP**

SCALE: SHEET 5 OF 5 SHEETS STA. TO STA.

F.A. RTE.	SECTION	COUNTY	TOTAL SHEETS	SHEET NO.
	D1 APP PAINT PVT 22-10	MCHENRY & DuPAGE	5	5
CONTRACT NO. 46574				
ILLINOIS FED. AID PROJECT				