

STATE OF ILLINOIS
DEPARTMENT OF TRANSPORTATION

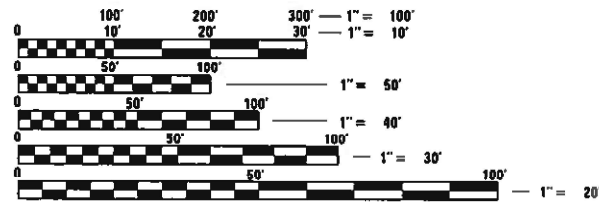
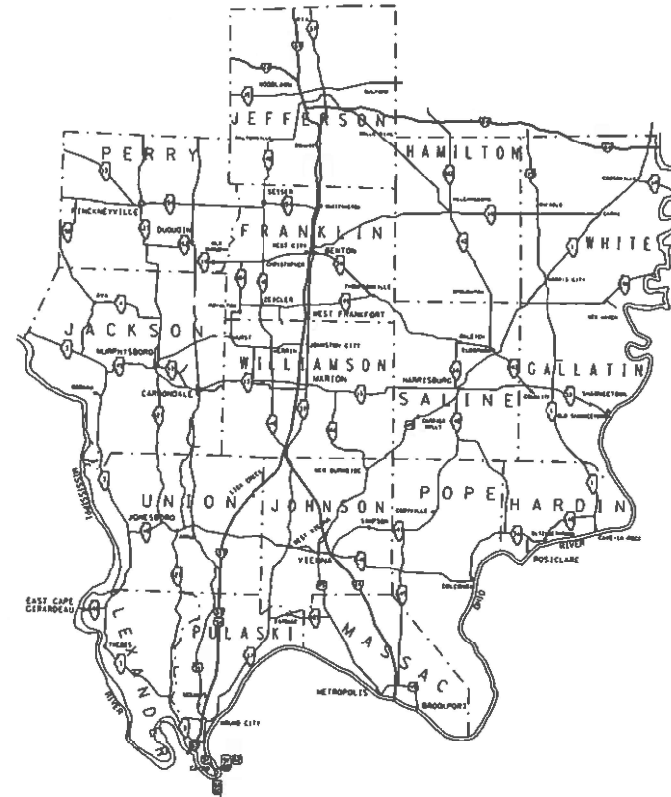
F.A. RTE.	SECTION	COUNTY	TOTAL SHEETS	SHEET NO.
VAR.	D9 PAVMNT MKR RPR 22-14	VARIOUS	5	1
		ILLINOIS	CONTRACT NO. 46578	

FOR INDEX OF SHEETS, SEE SHEET NO. 2
FOR SUMMARY OF QUANTITIES, SEE SHEET NO. 3-5

PROPOSED
HIGHWAY PLANS

VARIOUS ROUTES
SECTION D9 HT PVMNT MRK RPR 22-14
VARIOUS COUNTIES

M-60-014-22



FULL SIZE PLANS HAVE BEEN PREPARED USING STANDARD ENGINEERING SCALES. REDUCED SIZED PLANS WILL NOT CONFORM TO STANDARD SCALES. IN MAKING MEASUREMENTS ON REDUCED PLANS, THE ABOVE SCALES MAY BE USED.

J.U.L.I.E.
JOINT UTILITY LOCATION INFORMATION FOR EXCAVATORS
1-800-892-0123
OR 811

PROJECT MANAGER: SUSAN POE
PROJECT ENGINEER: JOHN BROWN

CONTRACT NO. 46578

STATE OF ILLINOIS
DEPARTMENT OF TRANSPORTATION

SUBMITTED 03-10-21
[Signature]
REGIONAL ENGINEER

May 7, 2021 [Signature]
ENGINEER OF DESIGN AND ENVIRONMENT

May 7, 2021 [Signature]
DIRECTOR OF HIGHWAYS PROJECT IMPLEMENTATION 13

PRINTED BY THE AUTHORITY
OF THE STATE OF ILLINOIS

INDEX OF SHEETS

SHEET NO.	DESCRIPTION
1	COVER SHEET
2	SIGNATURE SHEET, INDEX OF SHEETS, STANDARDS
3-5	SUMMARY OF QUANTITIES

LIST OF STANDARDS

000001-08	STANDARD SYMBOLS, ABBREVIATIONS AND PATTERNS
701311-03	LANE CLOSURE 2L, 2W MOVING OPERATIONS - DAY ONLY
701426-09	LANE CLOSURE, MULTILANE, INTERMITTENT OR MOVING OPERATIONS FOR SPEEDS \geq 45 MPH
701427-05	LANE CLOSURE, MULTILANE, INTERMITTENT OR MOVING OPERATIONS FOR SPEEDS \leq 45 MPH
701901-08	TRAFFIC CONTROL DEVICES
780001-05	TYPICAL PAVEMENT MARKINGS
001006	DECIMAL OF AN INCH AND OF A FOOT

Prepared By:	<i>Charles Stein</i> DISTRICT STUDIES & PLANS ENGINEER
Examined By:	<i>Nancy Hill</i> DISTRICT LAND ACQUISITION ENGINEER
Examined By:	<i>Car Nuber</i> DISTRICT PROGRAM DEVELOPMENT ENGINEER
Examined By:	<i>Kelley</i> DISTRICT OPERATIONS ENGINEER
Examined By:	<i>KRQ</i> DISTRICT PROJECT IMPLEMENTATION ENGINEER
Examined By:	<i>Douglas</i> DISTRICT CONSTRUCTION ENGINEER
Examined By:	<i>R. C. O.</i> DISTRICT MATERIALS ENGINEER

REV. - MS

FILE NAME	USER NAME	DESIGNED	REVISIONS	STATE OF ILLINOIS DEPARTMENT OF TRANSPORTATION		INDEX OF SHEETS, STANDARDS AND SIGNATURE SHEET		F.A. RTE.	SECTION	COUNTY	TOTAL SHEETS	SHEET NO.
p:\splenroom.dat\illinois.gov\PIW001\Documents\DOT Offices\District 9\Projects\Geometrics\annual\pvmtranking	Brown	ORON	REVISIONS			SHEET OF SHEETS STA. TO STA.		VAR.	D-9 HT PVMNT MKX RPR 22-14	VARIOUS	5	2
Default								CONTRACT NO. 46578		ILLINOIS FED. AID PROJECT		

SUMMARY OF QUANTITIES

COUNTY:	VARIOUS
ROUTE:	VARIOUS
FUNDING:	100% STATE
	RURAL
	ROADWAY
	0021

CODE NUMBER	ITEM DESCRIPTION	UNIT	QUANTITY
78000100	THERMOPLASTIC PAVEMENT MARKING - LETTERS AND SYMBOLS	SQ FT	20,000
78000200	THERMOPLASTIC PAVEMENT MARKING - LINE 4"	FOOT	4,000
78000300	THERMOPLASTIC PAVEMENT MARKING - LINE 5"	FOOT	500
78000400	THERMOPLASTIC PAVEMENT MARKING - LINE 6"	FOOT	500
78000500	THERMOPLASTIC PAVEMENT MARKING - LINE 8"	FOOT	200
78000600	THERMOPLASTIC PAVEMENT MARKING - LINE 12"	FOOT	500
78000650	THERMOPLASTIC PAVEMENT MARKING - LINE 24"	FOOT	20,000
78003100	PREFORMED PLASTIC PAVEMENT MARKING, TYPE B - LETTERS AND SYMBOLS	SQ FT	100
78003110	PREFORMED PLASTIC PAVEMENT MARKING, TYPE B - LINE 4"	FOOT	50
78003120	PREFORMED PLASTIC PAVEMENT MARKING, TYPE B - LINE 5"	FOOT	50
78003130	PREFORMED PLASTIC PAVEMENT MARKING, TYPE B - LINE 6"	FOOT	50
78003140	PREFORMED PLASTIC PAVEMENT MARKING, TYPE B - LINE 8"	FOOT	50
78003150	PREFORMED PLASTIC PAVEMENT MARKING, TYPE B - LINE 12"	FOOT	50
78003180	PREFORMED PLASTIC PAVEMENT MARKING, TYPE B - LINE 24"	FOOT	100
78008210	POLYUREA PAVEMENT MARKING TYPE I - LINE 4"	FOOT	100

SUMMARY OF QUANTITIES - CONT

COUNTY:	VARIOUS
ROUTE:	VARIOUS
FUNDING:	100% STATE
	RURAL
	ROADWAY
	0021

CODE NUMBER	ITEM DESCRIPTION	UNIT	QUANTITY
78008220	POLYUREA PAVEMENT MARKING TYPE I - LINE 5"	FOOT	100
78008230	POLYUREA PAVEMENT MARKING TYPE I - LINE 6"	FOOT	100
78008240	POLYUREA PAVEMENT MARKING TYPE I - LINE 8"	FOOT	100
78008310	POLYUREA PAVEMENT MARKING TYPE II - LINE 4"	FOOT	100
78008320	POLYUREA PAVEMENT MARKING TYPE II - LINE 5"	FOOT	100
78008330	POLYUREA PAVEMENT MARKING TYPE II - LINE 6"	FOOT	100
78008340	POLYUREA PAVEMENT MARKING TYPE II - LINE 8"	FOOT	100
78009000	MODIFIED URETHANE PAVEMENT MARKING - LETTERS AND SYMBOLS	SQ FT	5,000
78009004	MODIFIED URETHANE PAVEMENT MARKING - LINE 4"	FOOT	200,000
78009005	MODIFIED URETHANE PAVEMENT MARKING - LINE 5"	FOOT	2,000
78009006	MODIFIED URETHANE PAVEMENT MARKING - LINE 6"	FOOT	500
78009008	MODIFIED URETHANE PAVEMENT MARKING - LINE 8"	FOOT	1,000
78009012	MODIFIED URETHANE PAVEMENT MARKING - LINE 12"	FOOT	1,000
78009024	MODIFIED URETHANE PAVEMENT MARKING - LINE 24"	FOOT	5,000
78300201	PAVEMENT MARKING REMOVAL - GRINDING	SQ FT	5,000

SUMMARY OF QUANTITIES - CONT

COUNTY:	VARIOUS
ROUTE:	VARIOUS
FUNDING:	100% STATE
	RURAL
	ROADWAY
	0021

CODE NUMBER	ITEM DESCRIPTION	UNIT	QUANTITY
78300202	PAVEMENT MARKING REMOVAL - WATER BLASTING	SQ FT	5,000
X7800815	HOT SPRAY THERMOPLASTIC PAVEMENT MARKING LINE - 4 INCH	FOOT	2,000,000
X7800825	HOT SPRAY THERMOPLASTIC PAVEMENT MARKING LINE - 5 INCH	FOOT	100,000
X7800835	HOT SPRAY THERMOPLASTIC PAVEMENT MARKING LINE - 6 INCH	FOOT	200
X7800845	HOT SPRAY THERMOPLASTIC PAVEMENT MARKING LINE - 8 INCH	FOOT	20,000
X7830068	GROOVING FOR RECESSED PAVEMENT MARKING, LETTERS, NUMBERS AND SYMBOLS	SQ FT	3,000
X7830070	GROOVING FOR RECESSED PAVEMENT MARKING 5"	FOOT	5,000
X7830072	GROOVING FOR RECESSED PAVEMENT MARKING 6"	FOOT	1,000
X7830074	GROOVING FOR RECESSED PAVEMENT MARKING 7"	FOOT	500
X7830076	GROOVING FOR RECESSED PAVEMENT MARKING 9"	FOOT	500
X7830078	GROOVING FOR RECESSED PAVEMENT MARKING 13"	FOOT	500
X7830090	GROOVING FOR RECESSED PAVEMENT MARKING 25"	FOOT	2,000
Z0008758	AERIAL SPEED CHECK MARKING	FOOT	50