

STATE OF ILLINOIS  
DEPARTMENT OF TRANSPORTATION

F.A.P. RTE.	SECTION	COUNTY	TOTAL SHEETS	SHEET NO.
317A	13-SW	PEORIA	23	1
		ILLINOIS	CONTRACT NO. 68E82	

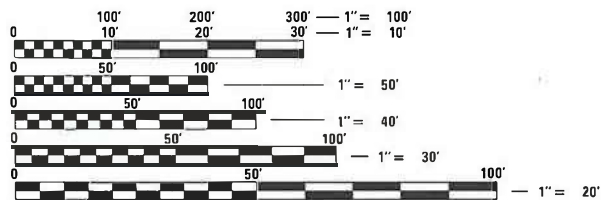
INDEX OF SHEETS

1. COVER SHEET
2. GENERAL NOTES
- 3.-4. SUMMARY OF QUANTITIES
5. TYPICAL SECTIONS
6. SCHEDULE OF QUANTITIES
7. LINE DIAGRAM
8. PLAN SHEET AND CLSM DETAIL
- 9.-10. TRAFFIC CONTROL SHEET
- 11.-12. PAVEMENT MARKING DETAIL
13. PIPE HANDRAIL DETAIL
14. WEEP HOLE DETAIL
- 15.-23. EXISTING PLANS - FOR INFORMATION ONLY

STANDARDS

- 000001-08
- 635001-02
- 701006-05
- 701426-09
- 701428-01
- 701602-10
- 701801-06
- 701901-08
- 704001-08
- 780001-05
- 782006-01

US 150 (WAR MEMORIAL DRIVE)  
PRINCIPAL ARTERIAL  
ADT = 29500 (2019)  
SU = 625 (2.1%)  
MU = 450 (1.5%)



FULL SIZE PLANS HAVE BEEN PREPARED USING STANDARD ENGINEERING SCALES. REDUCED SIZED PLANS WILL NOT CONFORM TO STANDARD SCALES. IN MAKING MEASUREMENTS ON REDUCED PLANS, THE ABOVE SCALES MAY BE USED.

J.U.L.I.E.  
JOINT UTILITY LOCATION INFORMATION FOR EXCAVATORS  
1-800-892-0123  
OR 811

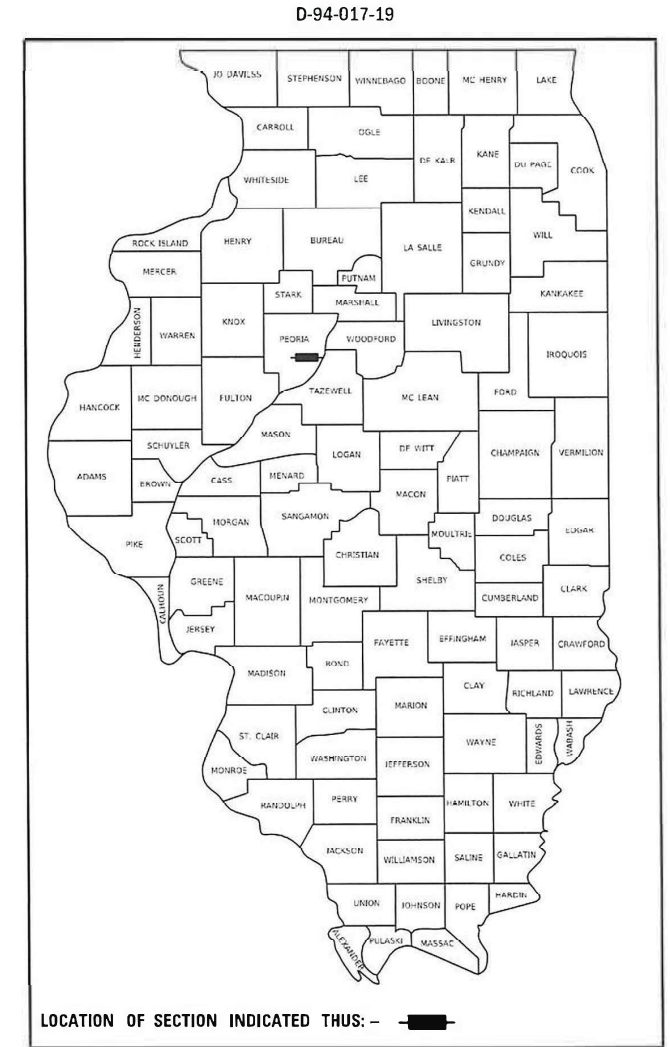
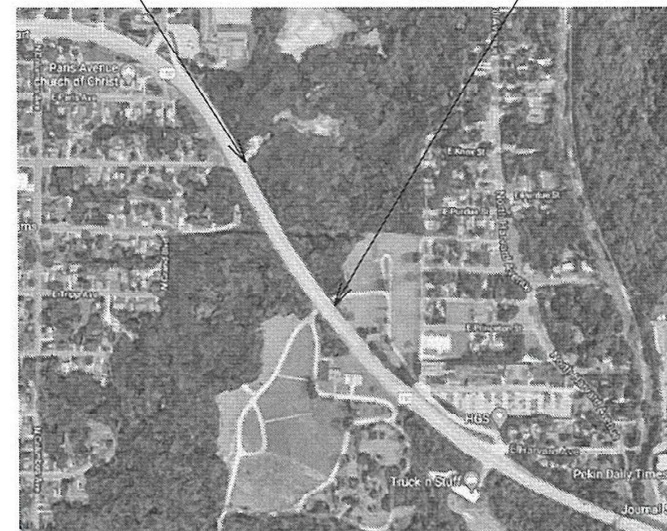
PROJECT ENGINEER: MAUREEN ADDIS (309)-671-3453  
PROJECT MANAGER: TRAVIS WALLENFANG (309)-671-3474  
CATALOG NO. 035709-00D  
CONTRACT NO. 68E82

PROPOSED  
HIGHWAY PLANS

F.A.P. 317A ROUTE US 150  
SECTION 13-SW  
D4 SIDEWALK REPLACEMENT  
CONTRACT MAINTENANCE  
PEORIA COUNTY

C-94-029-19

IMPROVEMENT BEGINS STA. 152+50  
IMPROVEMENT ENDS STA. 161+50



LOCATION OF SECTION INDICATED THUS: - [black rectangle] -  
**PROJECT DESCRIPTION:**  
SIDEWALK REPLACEMENT WITH MISCELLANEOUS DRAINAGE IMPROVEMENTS ALONG US 150 (WAR MEMORIAL DRIVE) FROM GRAND AVENUE TO HARVARD AVENUE IN PEORIA.

STATE OF ILLINOIS  
DEPARTMENT OF TRANSPORTATION

SUBMITTED March 25 20 21  
Ronald O. James  
REGIONAL ENGINEER

May 7, 2021 [Signature]  
ENGINEER OF DESIGN AND ENVIRONMENT

May 7, 2021 [Signature]  
DIRECTOR OF HIGHWAYS PROJECT IMPLEMENTATION

PRINTED BY THE AUTHORITY  
OF THE STATE OF ILLINOIS

GROSS LENGTH = 900 FT. = 0.17 MILE  
NET LENGTH = 900 FT. = 0.17 MILE

**ENVIRONMENTAL REVIEWS**

Prior to the use of any proposed borrow areas, use areas (temporary access roads, detours, run-arounds, etc.) and/or waste areas, the Contractor shall file the required environmental resource request surveys according to Section 107.22 of the Standard Specifications. These surveys are required in order for the Department to conduct cultural and biological resource surveys for the proposed site.

The required environmental resource documentation shall include the following:

- \* BDE Form 2289 (Cultural and Natural Resources Review of Borrow Areas)
- \* BDE Form 2290 (Waste/Use Area Review)
- \* A location map showing the size limits and location of the use area
- \* Color photographs depicting the use area
- \* Borrow Area Entry Agreement form – D4 PI0101

Prior to any waste materials being removed from the construction site the required environmental resource surveys shall be obtained and filed by the Contractor. Excess waste products removed from the construction site shall be disposed of as required in Section 202.03 of the Standard Specifications.

Any protruding metal bars shall be removed prior to the disposal of broken concrete at approved disposal sites.

Please note that a minimum of four weeks shall be allowed for the District to obtain the required environmental clearances and six weeks for the required borrow site environmental clearances.

**STATUS OF UTILITIES**

Company	Route	Offset	Location	Depth	Type of Utility	Type of Conflict	Disposition
AT & T DIST.	US 150	Lt 30'	Sta. 158+02	n/a	Utility Vault	New Sidewalk	To be filled w/ flowable to top of sidewalk. To be completed by end of March
IDOT/City of Peoria	US 150	Lt 37'	Sta. 155+00 to 161+50	Approx. 3' below grade	Fiber Optic	Sidewalk Removal/Excavation	Caution

**COMMITMENTS**

Commitments are not to be altered without the written approval of all parties to which the commitment was made.

No commitments have been made for this project.

**NO PASSING ZONE VERIFICATION**

The resident shall contact Operations to verify the location of no passing zones prior to placement of centerline striping.

MODEL: Default  
 FILE NAME: \\pub01\home\dot\illinois.gov\PI\DOT\Documents\DOT\_Offices\District\_4\Projects\IDIL\_68E82\CADD\317A\CAD\Drawings\PI\68E82\_CADD.dwg

USER NAME = \$USERS	DESIGNED -	REVISED -	<b>STATE OF ILLINOIS DEPARTMENT OF TRANSPORTATION</b>	<b>GENERAL NOTES</b>			F.A.P. RTE. 317A	SECTION 13-SW	COUNTY PEORIA	TOTAL SHEETS 23	SHEET NO. 2
PLOT SCALE = 1:150	DRAWN -	REVISED -					SCALE:	SHEET OF SHEETS	STA. TO STA.	CONTRACT NO. 68E82	
PLOT DATE = 4/5/2021	CHECKED -	REVISED -		ILLINOIS FED. AID PROJECT							
	DATE -	REVISED -									

MODEL: D:\p\work\peoria\111010\111010.dwg  
 FILE NAME: 111010.dwg  
 PROJECT: 111010  
 USER: USER\*

CODE NO.	ITEM	UNIT	TOTAL QUANTITY	CONSTR. CODE
				URBAN PEORIA 100% STATE SAFETY 0021
20200100	EARTH EXCAVATION	CU YD	252	252
28200200	FILTER FABRIC	SQ YD	600	600
42400100	PORTLAND CEMENT CONCRETE SIDEWALK 4 INCH	SQ FT	5395	5395
44000600	SIDEWALK REMOVAL	SQ FT	5125	5125
50901760	PIPE HANDRAIL	FOOT	50	50
59300100	CONTROLLED LOW-STRENGTH MATERIAL	CU YD	31	31
60300305	FRAMES AND LIDS TO BE ADJUSTED	EACH	1	1
67100100	MOBILIZATION	L SUM	1	1
70102640	TRAFFIC CONTROL AND PROTECTION, STANDARD 701801	L SUM	1	1
70107005	PAVEMENT MARKING BLACKOUT TAPE, 5"	FOOT	4150	4150
70107007	PAVEMENT MARKING BLACKOUT TAPE, 7"	FOOT	370	370
70107009	PAVEMENT MARKING BLACKOUT TAPE, 9"	FOOT	40	40
70107012	PAVEMENT MARKING BLACKOUT TAPE, 12"	FOOT	425	425
70107025	CHANGEABLE MESSAGE SIGN	CAL DA	30	30

USER NAME = USER*	DESIGNED -	REVISED -
PLOT SCALE = 1:150	DRAWN -	REVISED -
PLOT DATE = 4/5/2021	CHECKED -	REVISED -
	DATE -	REVISED -

**STATE OF ILLINOIS**  
**DEPARTMENT OF TRANSPORTATION**

**SUMMARY OF QUANTITIES**

F.A.P. RTE.	SECTION	COUNTY	TOTAL SHEETS	SHEET NO.
317A	13-SW	PEORIA	23	3
CONTRACT NO. 68E82				
ILLINOIS FED. AID PROJECT				

				URBAN	CONSTR. CODE
					PEORIA 100% STATE SAFETY 0021
CODE NO.	ITEM	UNIT	TOTAL QUANTITY		
70300150	SHORT TERM PAVEMENT MARKING REMOVAL	SQ FT	4340.4		4340.4
70300520	PAVEMENT MARKING TAPE, TYPE III 4"	FOOT	5820		5820
70400100	TEMPORARY CONCRETE BARRIER	FOOT	750		750
70600251	IMPACT ATTENUATORS, TEMPORARY (NON- REDIRECTIVE, NARROW), TEST LEVEL 3	EACH	2		2
* 78001100	PAINT PAVEMENT MARKING - LETTERS AND SYMBOLS	SQ FT	16		16
* 78001110	PAINT PAVEMENT MARKING - LINE 4"	FOOT	6792		6792
* 78001130	PAINT PAVEMENT MARKING - LINE 6"	FOOT	940		940
* 78001140	PAINT PAVEMENT MARKING - LINE 8"	FOOT	40		40
* 78001150	PAINT PAVEMENT MARKING - LINE 12"	FOOT	345		345
X0322906	WEEP HOLES CORED	EACH	18		18
X0795800	COARSE AGGREGATE	TON	216		216
X3510407	AGGREGATE BASE COURSE, TYPE CA-7	TON	87		87
X7010230	TRAFFIC CONTROL AND PROTECTION, STANDARD 701602, SPECIAL	L SUM	1		1
X7040125	PINNING TEMPORARY CONCRETE BARRIER	EACH	360		360
Z0007126	HANDRAIL REMOVAL	FOOT	50		50

\*= SPECIALTY ITEM

MODEL: Default  
FILE: \\server\com\dell\inosagov\HDDT\Documents\HDDT - Of Files\District 4\Projects\04\_68E82\CADD\as\CONTRACTING\0468E82-CADD.dgn

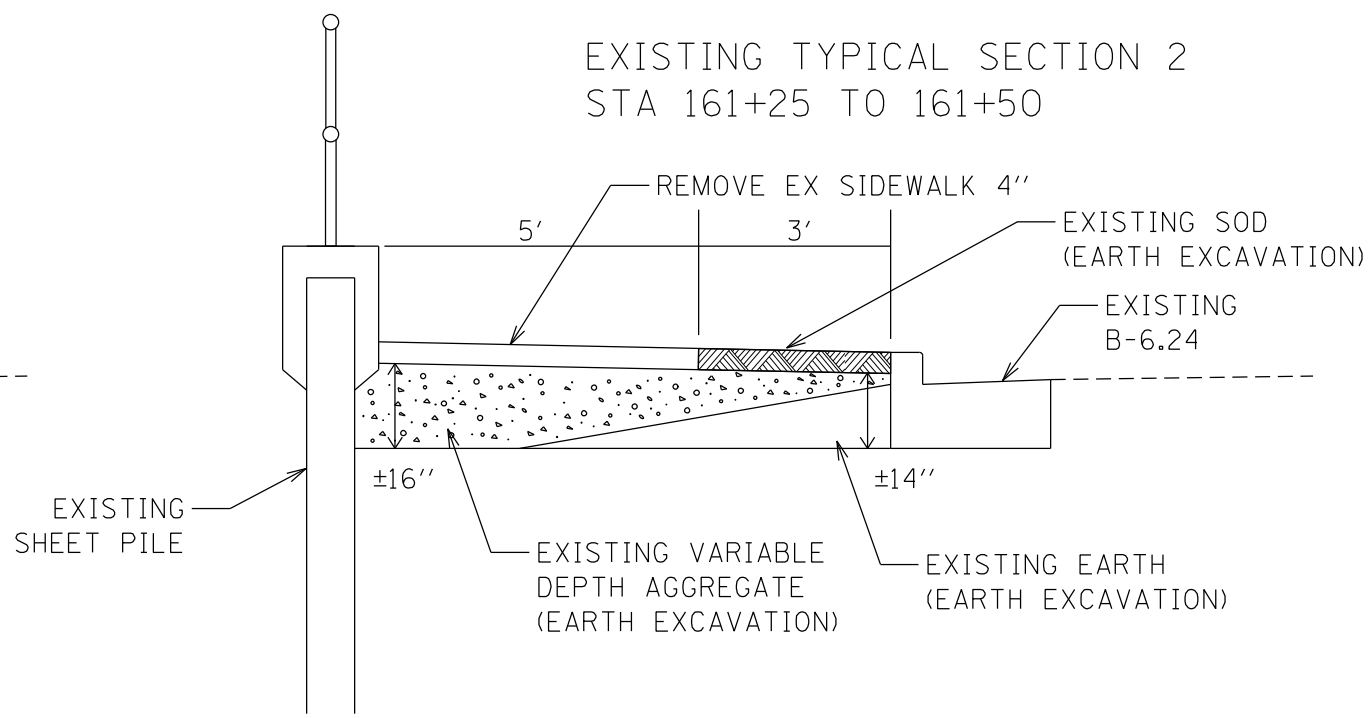
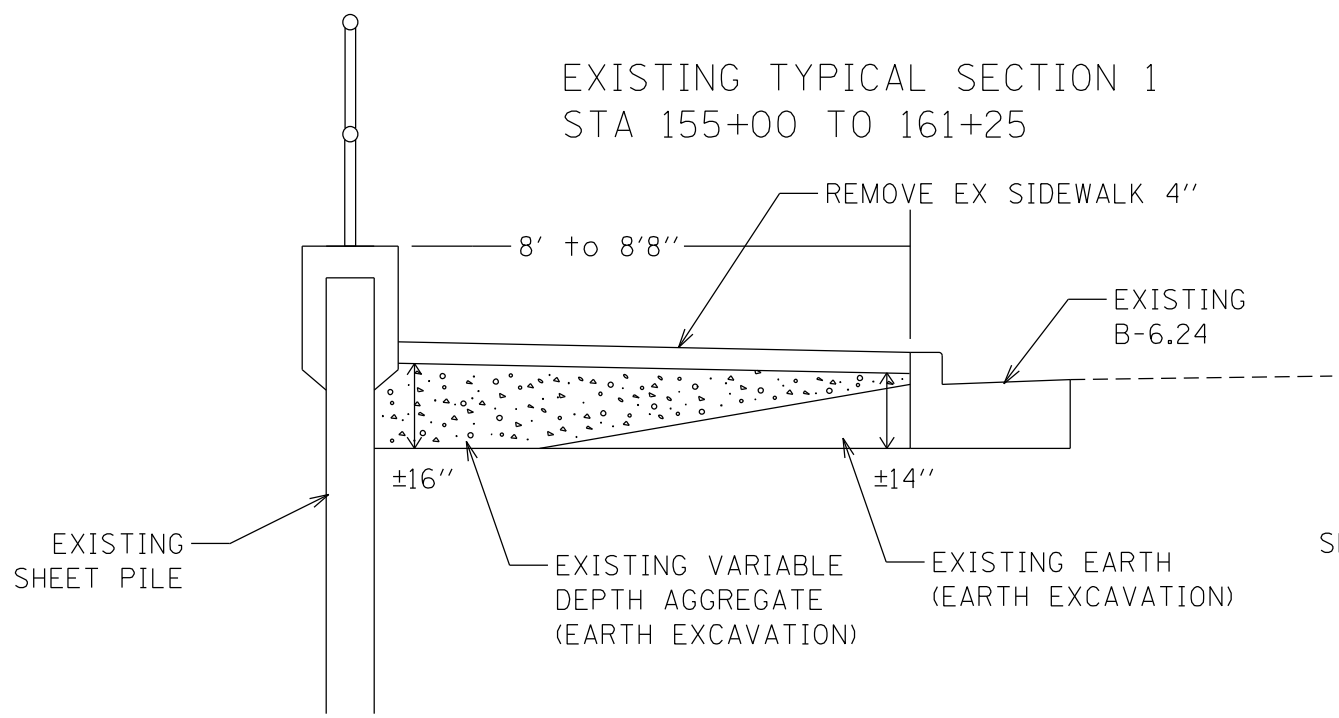
USER NAME = *USER*	DESIGNED -	REVISED -
	DRAWN -	REVISED -
PLOT SCALE = 1/150	CHECKED -	REVISED -
PLOT DATE = 4/5/2021	DATE -	REVISED -

**STATE OF ILLINOIS  
DEPARTMENT OF TRANSPORTATION**

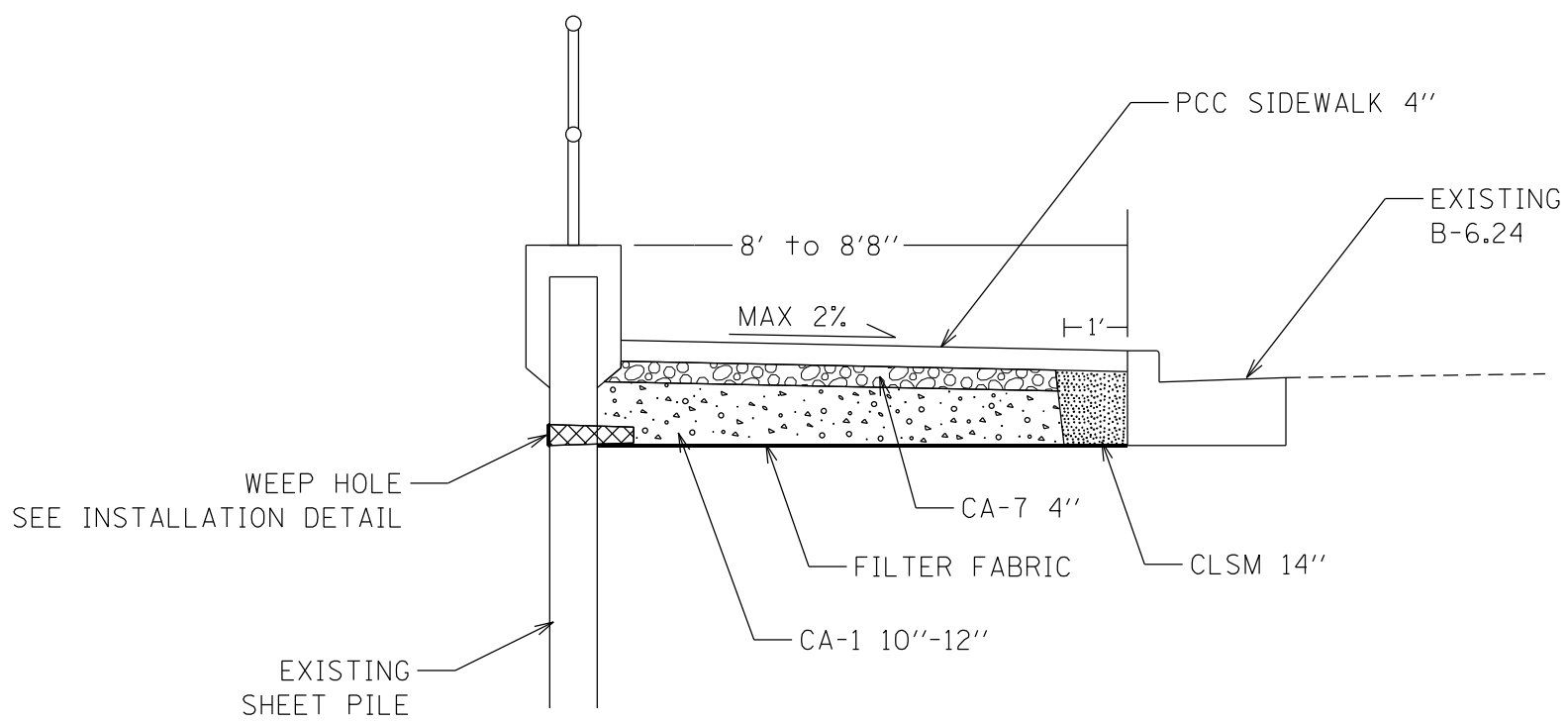
**SUMMARY OF QUANTITIES**

F.A.P. RTE.	SECTION	COUNTY	TOTAL SHEETS	SHEET NO.
317A	13-SW	PEORIA	23	4
			CONTRACT NO. 68E82	
ILLINOIS FED. AID PROJECT				





PROPOSED TYPICAL SECTION  
STA 155+00 TO 161+50



MODEL: Default  
 FILE NAME: p:\pub\amr\room.dwg  
 ILLINOIS DOT  
 PROJECT: 68E82  
 OFFICE: DISTRICT 4  
 DRAWING: 13-SW-5

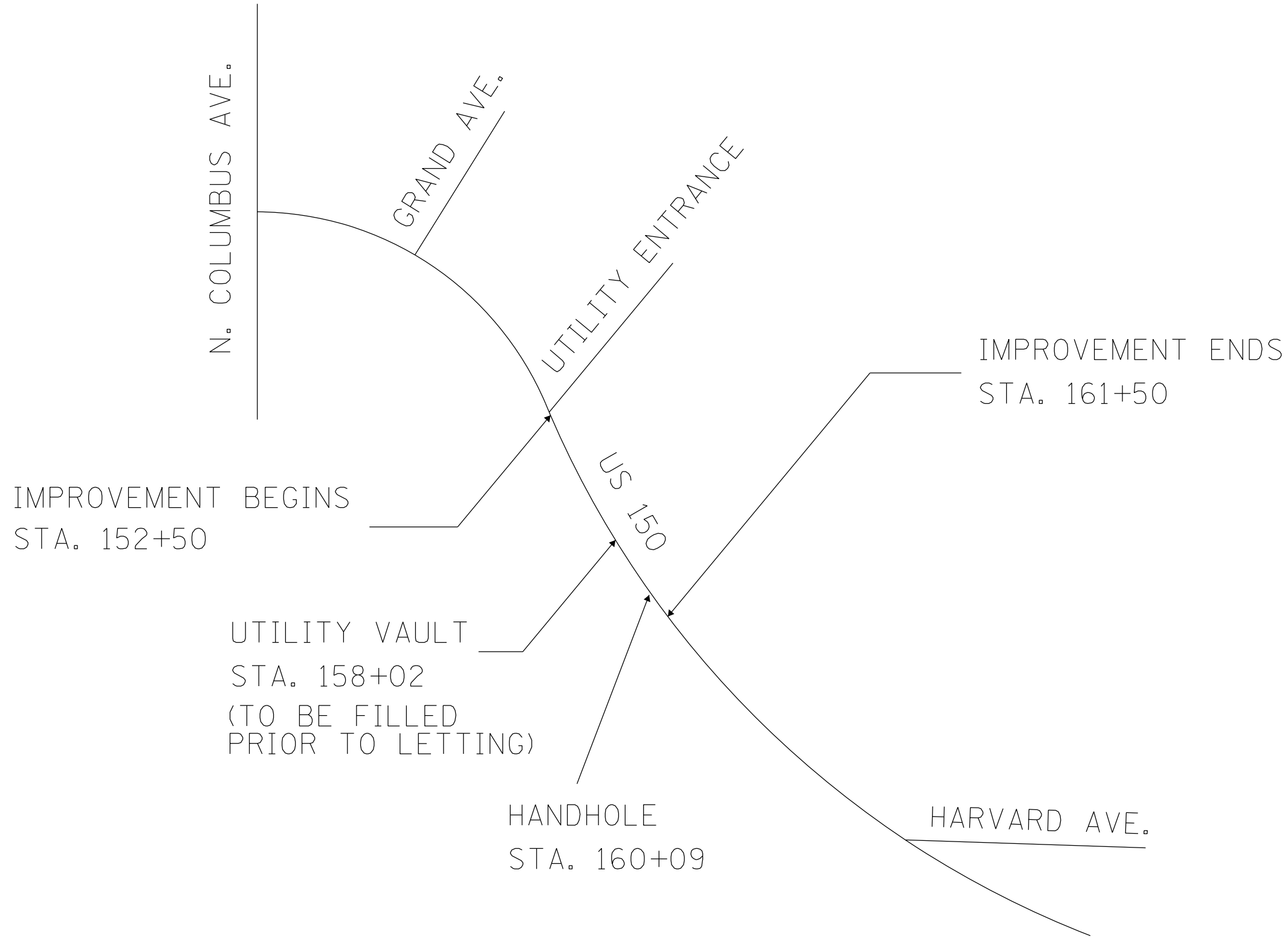
USER NAME = \$USER\$	DESIGNED -	REVISED -
PLOT SCALE = 1:150	DRAWN -	REVISED -
PLOT DATE = 4/5/2021	CHECKED -	REVISED -
	DATE -	REVISED -

**STATE OF ILLINOIS  
DEPARTMENT OF TRANSPORTATION**

<b>TYPICAL SECTIONS</b>				
SCALE:	SHEET	OF	SHEETS	STA. TO STA.

F.A.P. RTE. 317A	SECTION 13-SW	COUNTY PEORIA	TOTAL SHEETS 23	SHEET NO. 5
CONTRACT NO. 68E82				
ILLINOIS FED. AID PROJECT				





MODEL: Default  
 FILE NAME: p:\u0000\m0000.dwg  
 PROJECT: I:\Projects\DOT Documents\DOT Office\District 4\Projects\ID4\_68E82\CADD\DOT\CAD\Drawings\ID4\_68E82\_CADD.dwg

USER NAME = \$USERS	DESIGNED -	REVISED -
	DRAWN -	REVISED -
PLOT SCALE = 1:150	CHECKED -	REVISED -
PLOT DATE = 4/5/2021	DATE -	REVISED -

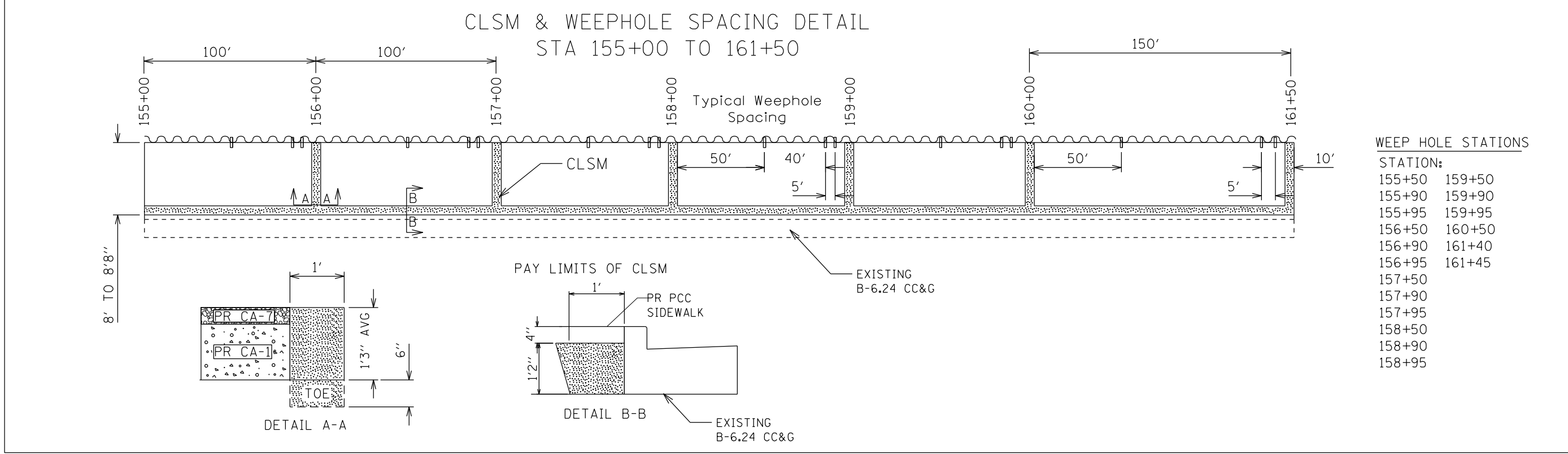
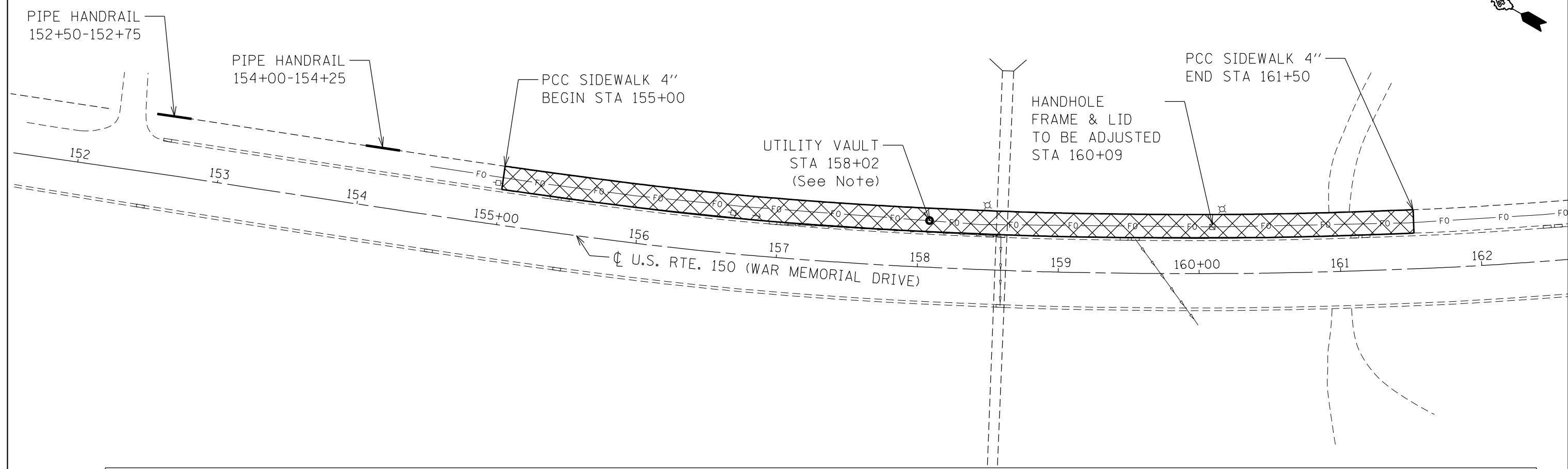
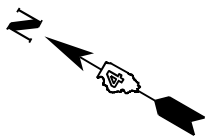
**STATE OF ILLINOIS  
DEPARTMENT OF TRANSPORTATION**

**LINE DIAGRAM**

SCALE: SHEET OF SHEETS STA. TO STA.

F.A.P. RTE.	SECTION	COUNTY	TOTAL SHEETS	SHEET NO.
317A	13-SW	PEORIA	23	7
CONTRACT NO. 68E82				
ILLINOIS FED. AID PROJECT				

**Note: Existing Utility Vault to be removed and filled with flowable fill prior to project letting. Removal of remaining structure and fill material to a minimum depth of 4" shall be paid for as Sidewalk Removal**



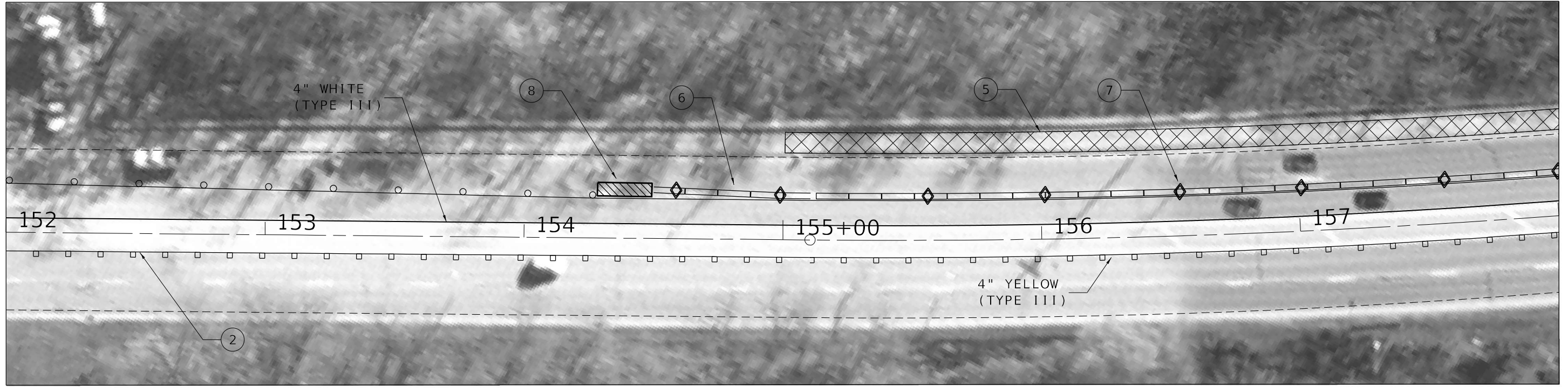
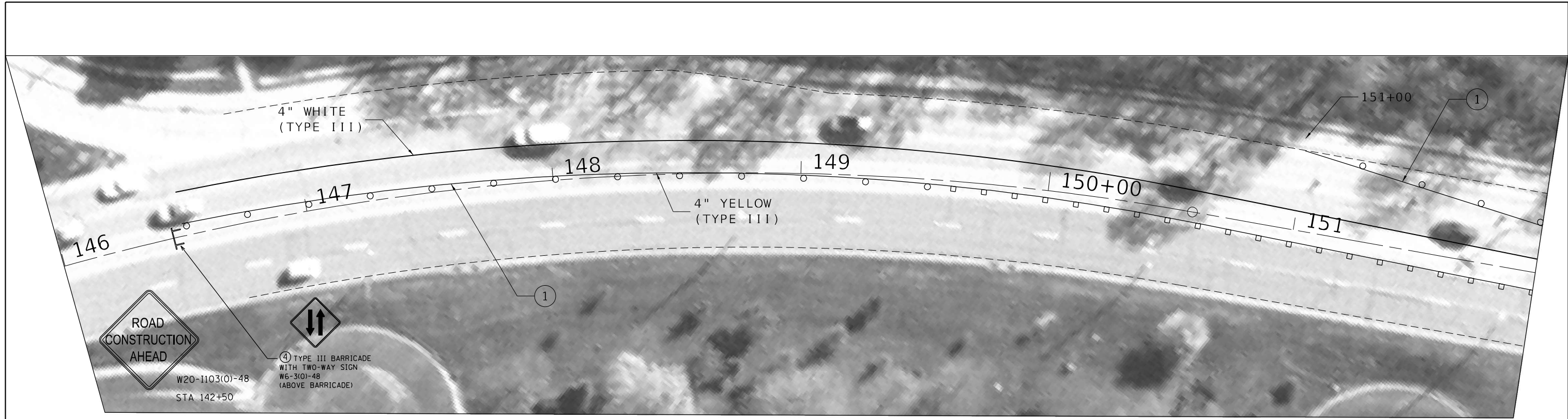
MODEL: Default  
 FILE NAME: p:\m\baronm.dwg  
 PROJECT: ILLINOIS DOT ILLINOIS DOT Documents\DOT Office\District 4\Projects\IDLA\_68E82\CADD\31\CD\Drawings\68E82-CADD.dwg

USER NAME = \$USERS	DESIGNED -	REVISED -
PLOT SCALE = 1:150	DRAWN -	REVISED -
PLOT DATE = 4/5/2021	CHECKED -	REVISED -
	DATE -	REVISED -

**STATE OF ILLINOIS  
DEPARTMENT OF TRANSPORTATION**

<b>PLAN SHEET AND CLSM DETAIL</b>				
SCALE:	SHEET	OF	SHEETS	STA. TO STA.

F.A.P. RTE.	SECTION	COUNTY	TOTAL SHEETS	SHEET NO.
317A	13-SW	PEORIA	23	8
CONTRACT NO. 68E82				
ILLINOIS FED. AID PROJECT				



- ① DRUM WITH STEADY BURN MONODIRECTIONAL LIGHT  
20' CENTER IN TAPERS  
25' CENTER IN MAIN LINE
- ② TUBULAR MARKERS
- ③ SIGN
- ④ TYPE III BARRICADE
- ⑤ WORK AREA
- ⑥ TEMPORARY CONCRETE BARRIER
- ⑦ TYPE C BI-DIRECTIONAL REFLECTOR  
AT 50' CENTERS
- ⑧ IMPACT ATTENUATORS, TEMPORARY  
(NON-REDIRECTIVE) TEST LEVEL 3 NARROW

MODEL: Default  
 FILE NAME: p:\pub\baronon.dwg  
 PROJECT: ILLINOIS DOT OFFICE DISTRICT 4  
 PROJECT ID: 68E82  
 CADD: 317A  
 CONTRACT: 68E82

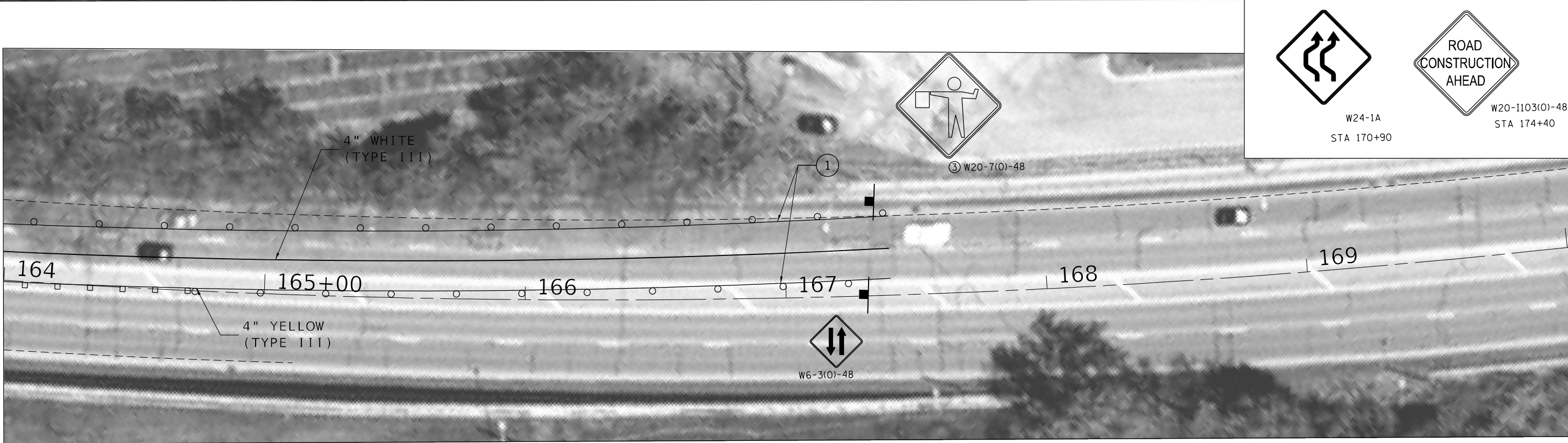
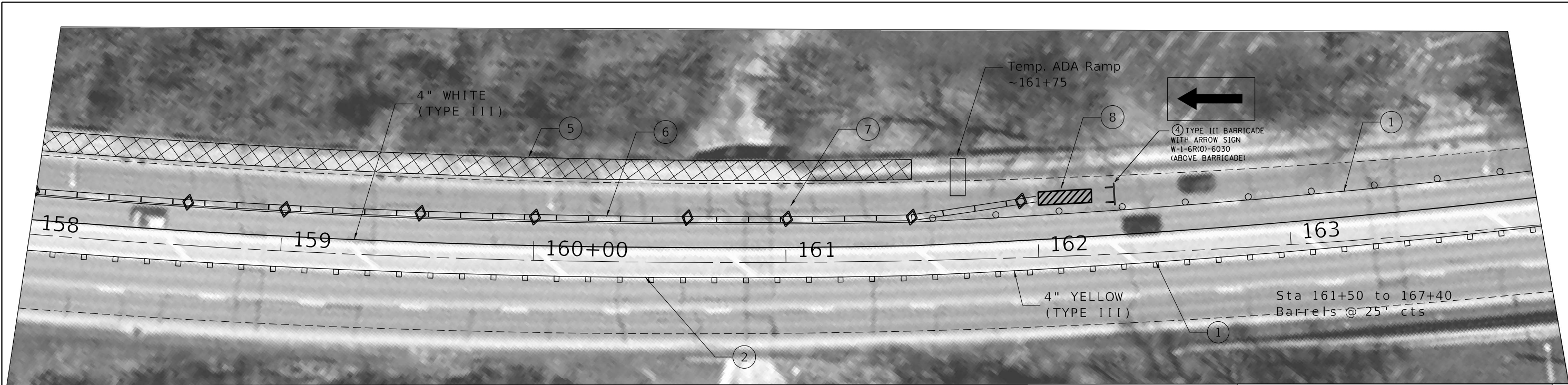
USER NAME = \$USERS	DESIGNED -	REVISED -
	DRAWN -	REVISED -
PLOT SCALE = 1:40	CHECKED -	REVISED -
PLOT DATE = 4/5/2021	DATE -	REVISED -

**STATE OF ILLINOIS  
DEPARTMENT OF TRANSPORTATION**

<b>TRAFFIC CONTROL SHEETS 701602 SPECIAL</b>				
SCALE:	SHEET	OF	SHEETS	STA. TO STA.

F.A.P. RTE.	SECTION	COUNTY	TOTAL SHEETS	SHEET NO.
317A	13-SW	PEORIA	23	9
CONTRACT NO. 68E82				
ILLINOIS FED. AID PROJECT				





- ① DRUM WITH STEADY BURN MONODIRECTIONAL LIGHT  
20' CENTER IN TAPERS  
25' CENTER IN MAIN LINE
- ② TUBULAR MARKERS
- ③ SIGN
- ④ TYPE III BARRICADE
- ⑤ WORK AREA
- ⑥ TEMPORARY CONCRETE BARRIER
- ⑦ TYPE C BI-DIRECTIONAL REFLECTOR  
AT 50' CENTERS
- ⑧ IMPACT ATTENUATORS, TEMPORARY  
(NON-REDIRECTIVE) TEST LEVEL 3 NARROW

W24-1A  
STA 170+90

W20-1103(0)-48  
STA 174+40

MODEL: Default  
 FILE NAME: p:\pub\baronm.dwg  
 PROJECT: ILLINOIS DOT  
 OFFICE: DISTRICT 4  
 PROJECT: IDL\_68E2\CADD\317A\CDR\baronm.dwg  
 DATE: 4/5/2021

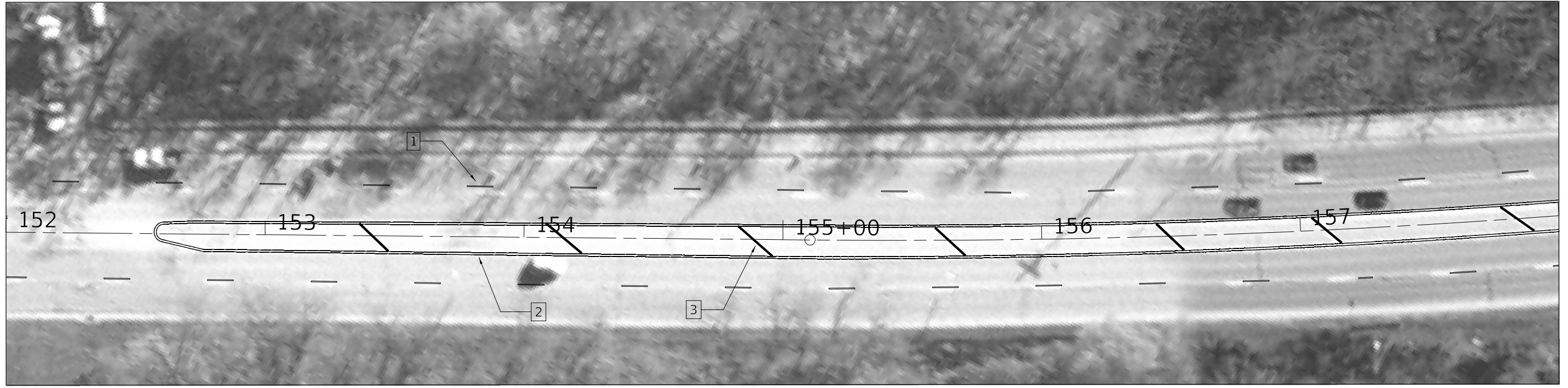
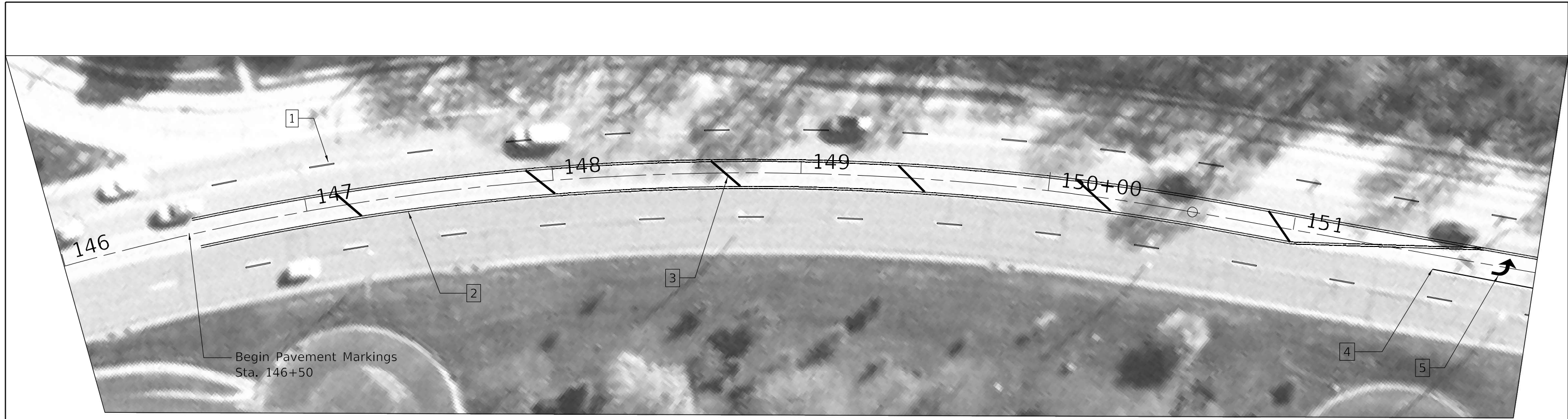
USER NAME = \$USERS	DESIGNED -	REVISED -	
	DRAWN -	REVISED -	
PLOT SCALE = 1:40	CHECKED -	REVISED -	
PLOT DATE = 4/5/2021	DATE -	REVISED -	

**STATE OF ILLINOIS  
DEPARTMENT OF TRANSPORTATION**

**TRAFFIC CONTROL SHEETS  
701602 SPECIAL**

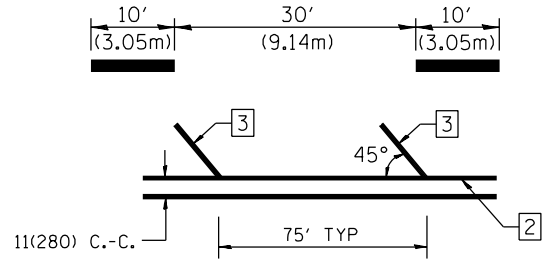
SCALE: SHEET OF SHEETS STA. TO STA.

F.A.P. RTE.	SECTION	COUNTY	TOTAL SHEETS	SHEET NO.
317A	13-SW	PEORIA	23	10
CONTRACT NO. 68E82				
ILLINOIS FED. AID PROJECT				



**TYPICAL PAVEMENT MARKING LEGEND**

- 1 6" SKIP-DASH (WHITE)
- 2 4" SOLID DOUBLE (YELLOW)
- 3 12" DIAGONAL (YELLOW)



- 4 8" SOLID (WHITE)
- 5 LETTERS & SYMBOLS  
LARGE LEFT TURN ARROW

MODEL: Default  
 FILE NAME: p:\m\baronm.dwg  
 PROJECT: ILLINOIS DOT OFFICE DISTRICT 4 PROJECT ID: 68E2 CAD DATA: CADWORKSPACE: 68E2-2014\project.dwg  
 PLOT DATE: 4/5/2021

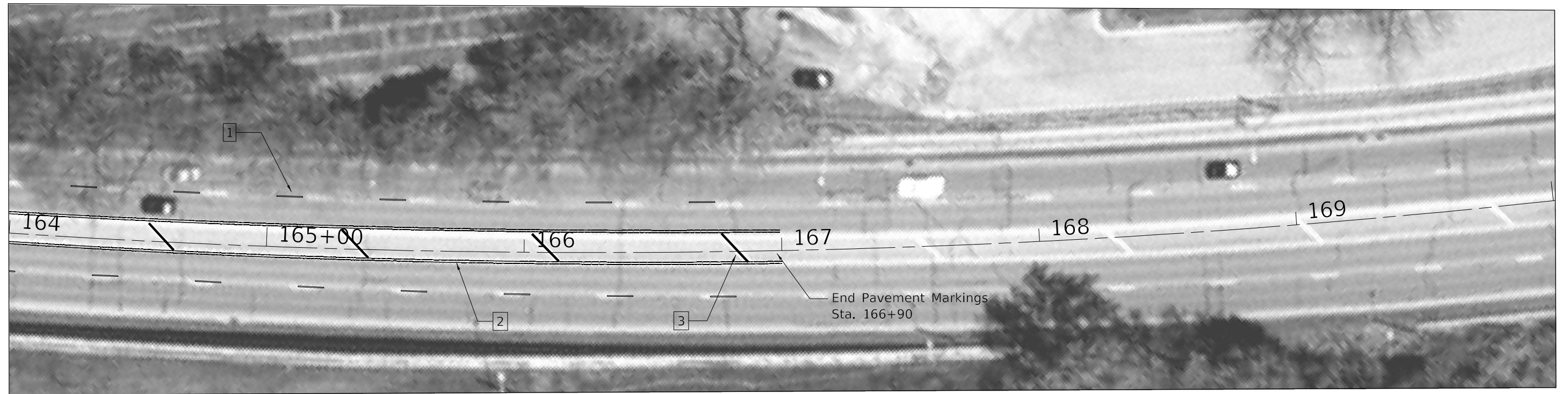
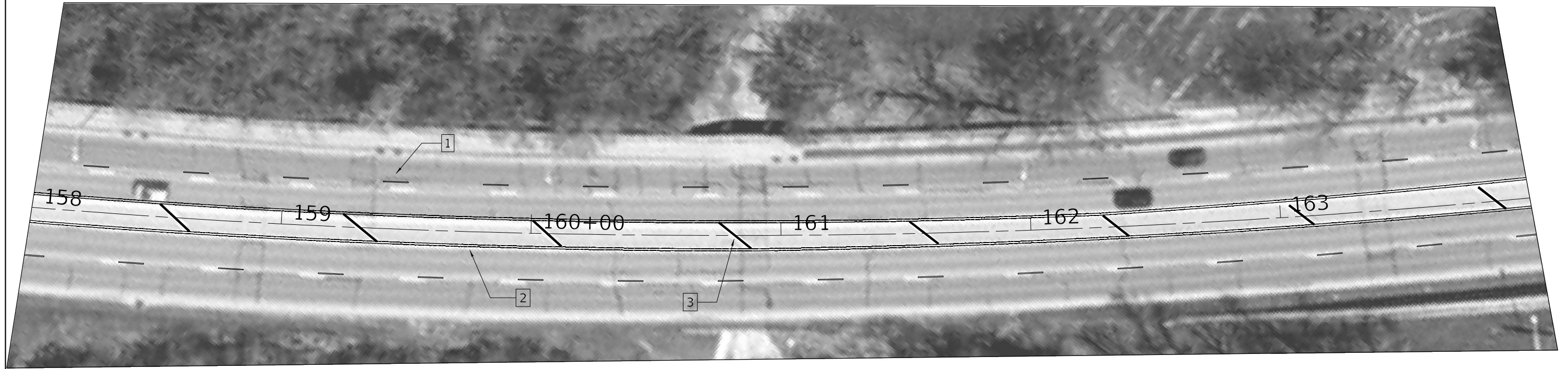
USER NAME = \$USERS	DESIGNED -	REVISED -
PLOT SCALE = 1:40	DRAWN -	REVISED -
PLOT DATE = 4/5/2021	CHECKED -	REVISED -
	DATE -	REVISED -

**STATE OF ILLINOIS  
DEPARTMENT OF TRANSPORTATION**

PROPOSED PAVEMENT MARKINGS				
SCALE:	SHEET	OF	SHEETS	STA. TO STA.

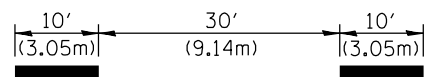
F.A.P. RTE.	SECTION	COUNTY	TOTAL SHEETS	SHEET NO.
317A	13-SW	PEORIA	23	11
CONTRACT NO. 68E82				
ILLINOIS FED. AID PROJECT				



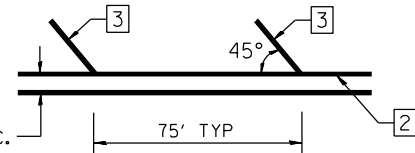


**TYPICAL PAVEMENT MARKING LEGEND**

1 6" SKIP-DASH (WHITE)



2 4" SOLID DOUBLE (YELLOW)



3 12" DIAGONAL (YELLOW)

4 8" SOLID (WHITE)

5 LETTERS & SYMBOLS  
LARGE LEFT TURN ARROW

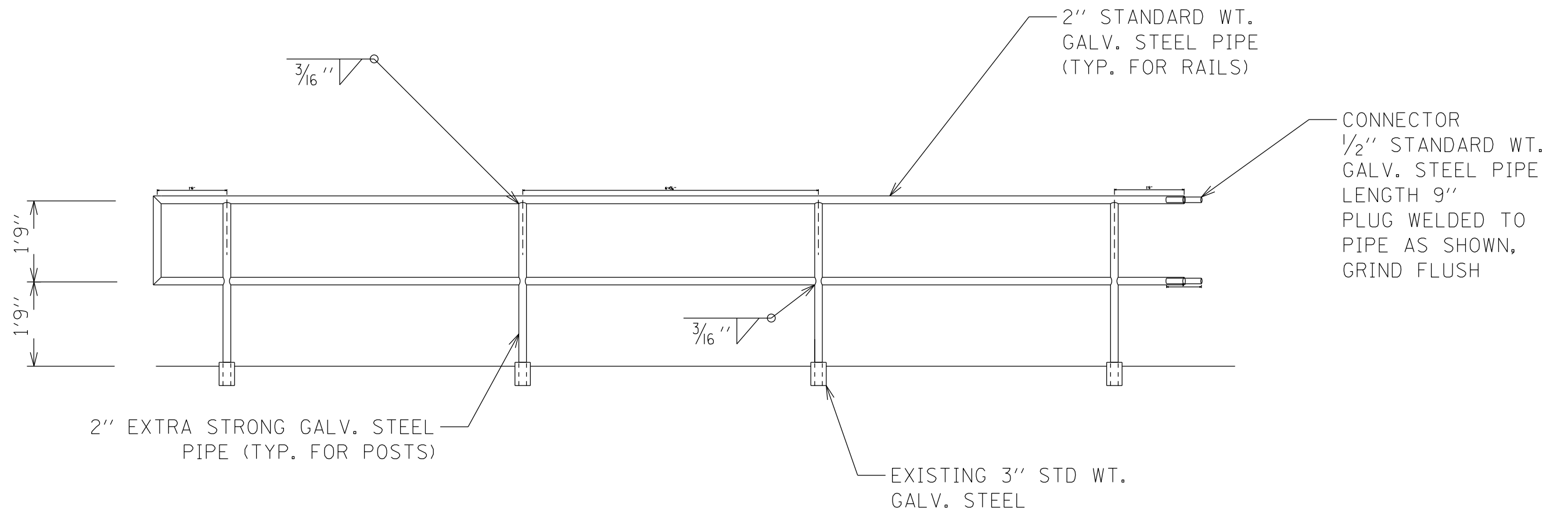
**STATE OF ILLINOIS  
DEPARTMENT OF TRANSPORTATION**

**PROPOSED PAVEMENT MARKINGS**

SCALE: SHEET OF SHEETS STA. TO STA.

F.A.P. RTE.	SECTION	COUNTY	TOTAL SHEETS	SHEET NO.
317A	13-SW	PEORIA	23	12
CONTRACT NO. 68E82				
ILLINOIS FED. AID PROJECT				

PIPE HANDRAIL DETAIL



MODEL: Default  
 FILE NAME: p:\pub\mroom.dwt\illinois\gov\PWIDOT\Documents\IDOT\_Offices\District\_4\Projects\ID4\_68E82\CADD\Drawings\ID468E82\_CADD.dwg

USER NAME = \$USER\$	DESIGNED -	REVISED -
	DRAWN -	REVISED -
PLOT SCALE = 1:150	CHECKED -	REVISED -
PLOT DATE = 4/5/2021	DATE -	REVISED -

STATE OF ILLINOIS  
DEPARTMENT OF TRANSPORTATION

PIPE HANDRAIL DETAIL

SCALE: SHEET OF SHEETS STA. TO STA.

F.A.P. RTE.	SECTION	COUNTY	TOTAL SHEETS	SHEET NO.
317A	13-SW	PEORIA	23	13
CONTRACT NO. 68E82				
ILLINOIS FED. AID PROJECT				



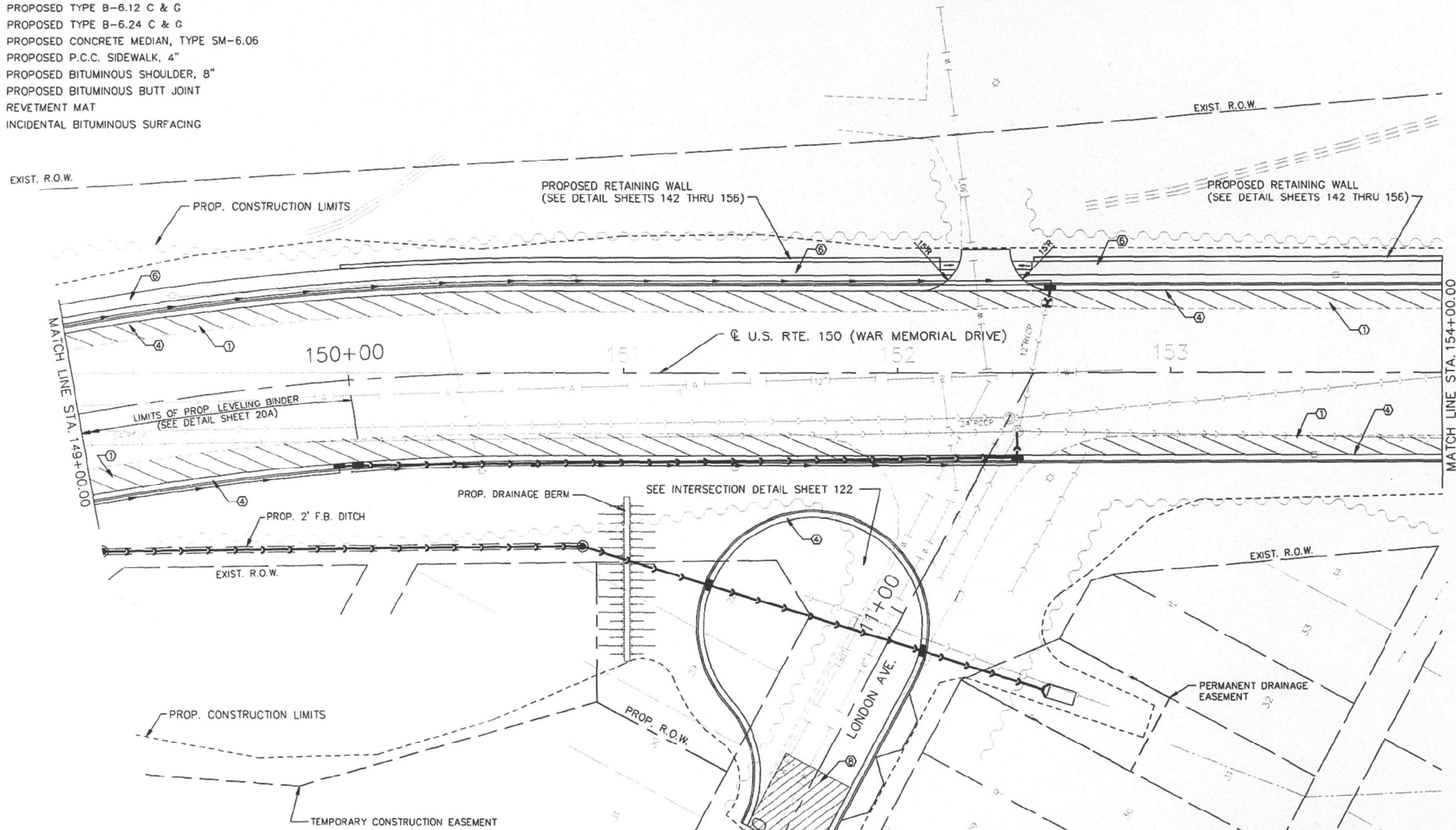


ROUTE NO.	SECTION	COUNTY	TOTAL SHEETS	SHEET NO.
U.S. 150	*	PEORIA/TAZEWELL		78
		ILLINOIS	FED. AID PROJECT	

\* 13W & RS-2, 14W & RS (158-1)

**LEGEND**

- ① PROPOSED P.C.C. BASE COURSE, 10"
- ② PROPOSED P.C.C. BASE COURSE WIDENING, 10"
- ③ PROPOSED TYPE B-6.12 C & G
- ④ PROPOSED TYPE B-6.24 C & G
- ⑤ PROPOSED CONCRETE MEDIAN, TYPE SM-6.06
- ⑥ PROPOSED P.C.C. SIDEWALK, 4"
- ⑦ PROPOSED BITUMINOUS SHOULDER, 8"
- ⑧ PROPOSED BITUMINOUS BUTT JOINT
- ⑨ REVETMENT MAT
- ⑩ INCIDENTAL BITUMINOUS SURFACING

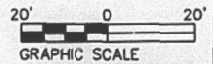


**FOR INFORMATION ONLY**

④ COMB. C.C. & GUTTER, TYPE B-6.24		TOTAL
STA. 149+00 TO STA. 154+00	LIN. FT.	
RT. STA. 149+00 TO STA. 154+00		466
LT. STA. 149+00 TO STA. 154+00		491
LONDON AVE. CUL-DE-SAC		270
SUB TOTAL		1227

⑥ P. C. C. SIDEWALK 4"				TOTAL
STA. 149+00 TO STA. 154+00	L	W	SQ. FT.	
LT. STA. 149+00 TO STA. 154+00	487	5	2435	
SUB TOTAL				2435

⑧ BITUMINOUS BUTT JOINT				TOTAL
STA. 149+00 TO STA. 154+00	L	W	SQ. YD. (L*W)/9	
LONDON AVE. CUL-DE-SAC	30	27	90	
SUB TOTAL				90



REVISIONS	
NAME	DATE

ILLINOIS DEPARTMENT OF TRANSPORTATION  
**PROPOSED ROADWAY PLAN**  
SCALE: 1"=20'  
DRAWN BY: CADD  
CHECKED BY: XXX

02/18/93 09:59:07 A.M. SHEET 54

USER NAME = SUSER5	DESIGNED -	REVISED -
PLOT SCALE = 1:100	DRAWN -	REVISED -
PLOT DATE = 4/5/2021	CHECKED -	REVISED -
	DATE -	REVISED -

**STATE OF ILLINOIS  
DEPARTMENT OF TRANSPORTATION**

EXISTING PLANS FOR INFORMATION ONLY			
SCALE:	SHEET	OF SHEETS	STA. TO STA.

F.A.P. RTE. 317A	SECTION 13-SW	COUNTY PEORIA	TOTAL SHEETS 23	SHEET NO. 15
CONTRACT NO. 68E82				
ILLINOIS FED. AID PROJECT				







**MANHOLES TO BE ADJUSTED**

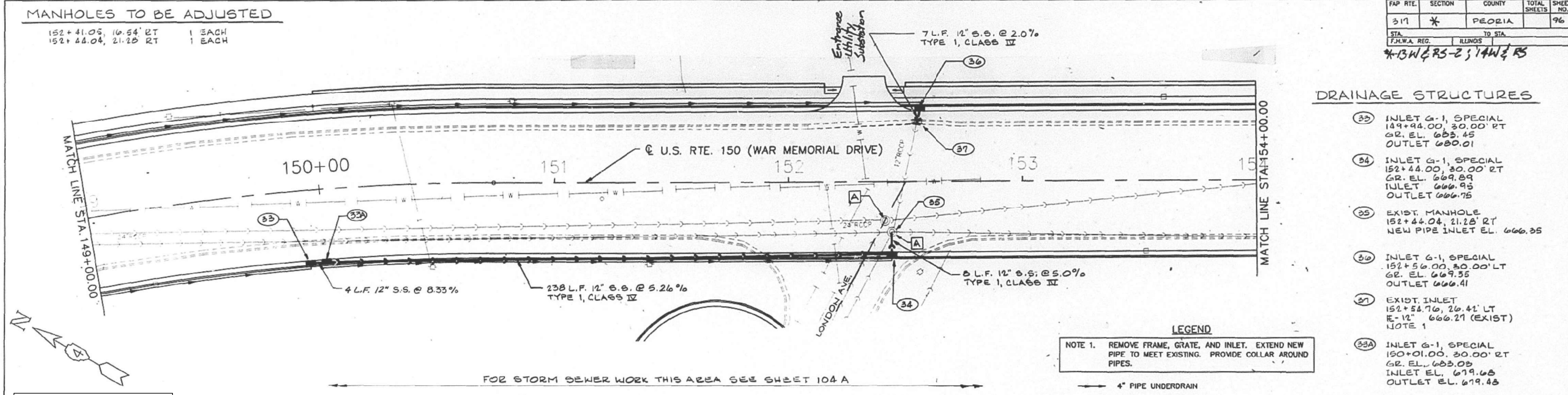
152+41.05, 16.54' RT 1 EACH  
 152+44.04, 21.25' RT 1 EACH

FAP RTE.	SECTION	COUNTY	TOTAL SHEETS	SHEET NO.
317	*	PEORIA	23	18

STA. FROM W.A. REG. TO STA. ILLINOIS  
 \*13W & RS-2; 14W & RS

**DRAINAGE STRUCTURES**

- 33 INLET G-1, SPECIAL  
149+44.00, 30.00' RT  
GR. EL. 665.45  
OUTLET 680.01
- 34 INLET G-1, SPECIAL  
152+44.00, 30.00' RT  
GR. EL. 669.89  
INLET 666.95  
OUTLET 666.75
- 35 EXIST. MANHOLE  
152+44.04, 21.25' RT  
NEW PIPE INLET EL. 666.95
- 36 INLET G-1, SPECIAL  
152+56.00, 30.00' LT  
GR. EL. 669.35  
OUTLET 666.41
- 37 EXIST. INLET  
152+54.76, 26.42' LT  
E-12" 666.21 (EXIST)  
NOTE 1
- 33A INLET G-1, SPECIAL  
150+01.00, 30.00' RT  
GR. EL. 665.03  
INLET EL. 679.68  
OUTLET EL. 679.48



**FOR INFORMATION ONLY**

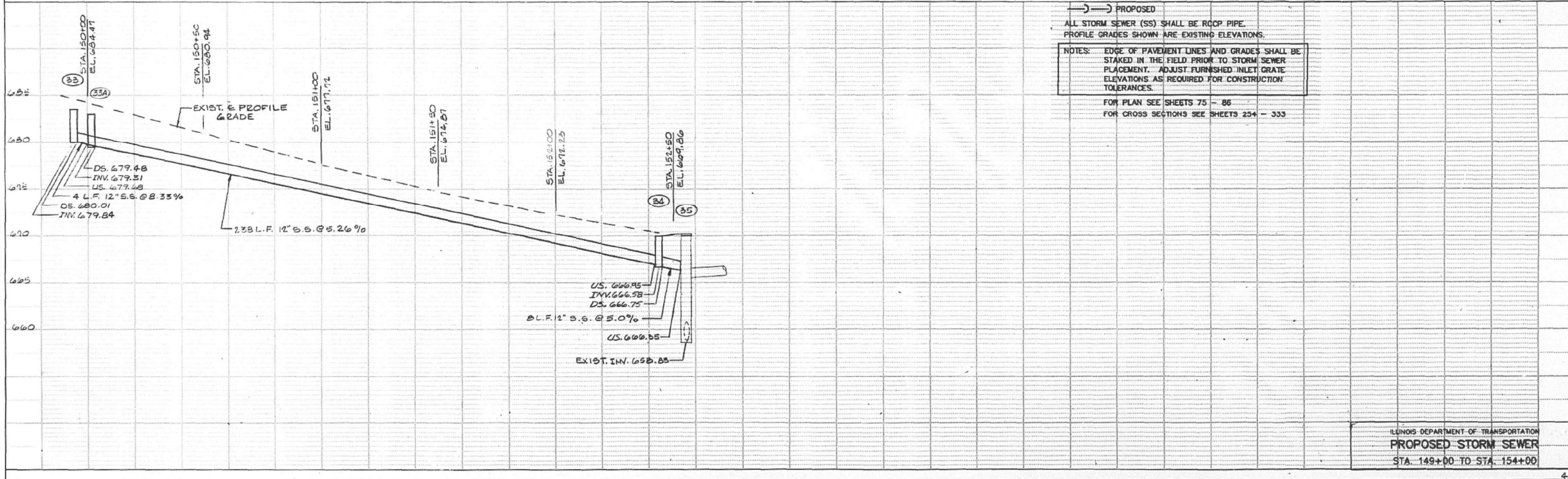
**LEGEND**

- NOTE 1. REMOVE FRAME, GRATE, AND INLET. EXTEND NEW PIPE TO MEET EXISTING. PROVIDE COLLAR AROUND PIPES.
- 4" PIPE UNDERDRAIN
- A MANHOLE TO BE ADJUSTED
- RC MANHOLE TO BE RECONSTRUCTED
- R DRAINAGE STRUCTURE TO BE REMOVED
- STRUCTURE
- EXISTING
- PROPOSED

ALL STORM SEWER (SS) SHALL BE RCP PIPE.  
 PROFILE GRADES SHOWN ARE EXISTING ELEVATIONS.

NOTES: EDGE OF PAVEMENT LINES AND GRADES SHALL BE STAKED IN THE FIELD PRIOR TO STORM SEWER PLACEMENT. ADJUST FURNISHED INLET GRATE ELEVATIONS AS REQUIRED FOR CONSTRUCTION TOLERANCES.

FOR PLAN SEE SHEETS 75 - 86  
 FOR CROSS SECTIONS SEE SHEETS 254 - 333



STATE OF ILLINOIS  
 DEPARTMENT OF TRANSPORTATION

**EXISTING PLANS FOR INFORMATION ONLY**

ILLINOIS DEPARTMENT OF TRANSPORTATION  
**PROPOSED STORM SEWER**  
 STA. 149+00 TO STA. 154+00

USER NAME = SUSER5	DESIGNED -	REVISED -
PLOT SCALE = 1:100	DRAWN -	REVISED -
PLOT DATE = 4/5/2021	CHECKED -	REVISED -
	DATE -	REVISED -

F.A.P. RTE.	SECTION	COUNTY	TOTAL SHEETS	SHEET NO.
317A	13-SW	PEORIA	23	18

CONTRACT NO. 68E82

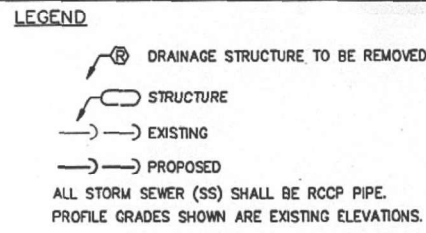
SCALE: SHEET OF SHEETS STA. TO STA.

ILLINOIS FED. AID PROJECT

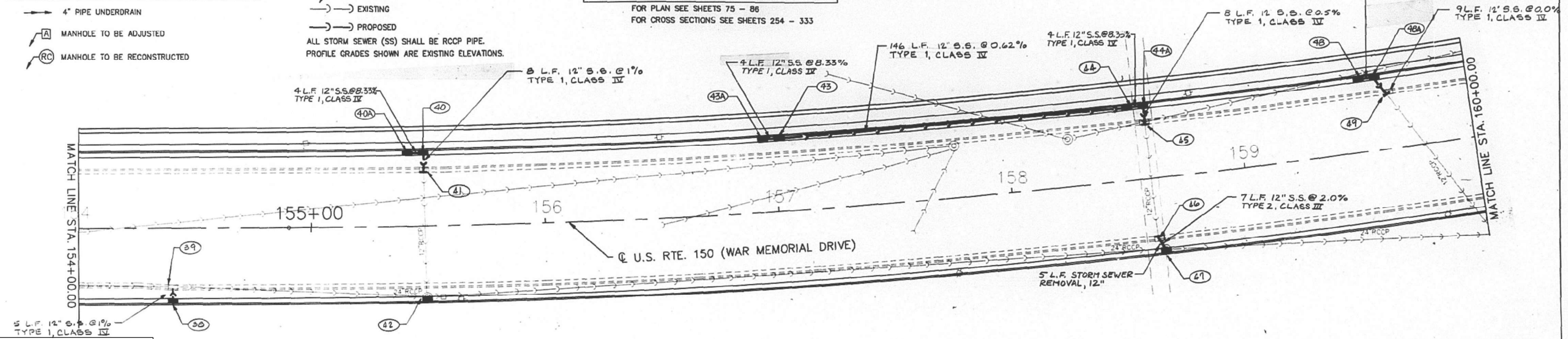


F.A.P. RTE.	SECTION	COUNTY	TOTAL SHEETS	SHEET NO.
317	*	PEORIA	23	19

NOTE 1. REMOVE FRAME, GRATE, AND INLET. EXTEND NEW PIPE TO MEET EXISTING. PROVIDE COLLAR AROUND PIPES.



**NOTES:** EDGE OF PAVEMENT LINES AND GRADES SHALL BE STAKED IN THE FIELD PRIOR TO STORM SEWER PLACEMENT. ADJUST FURNISHED INLET GRATE ELEVATIONS AS REQUIRED FOR CONSTRUCTION TOLERANCES.  
FOR PLAN SEE SHEETS 75 - 86  
FOR CROSS SECTIONS SEE SHEETS 254 - 333

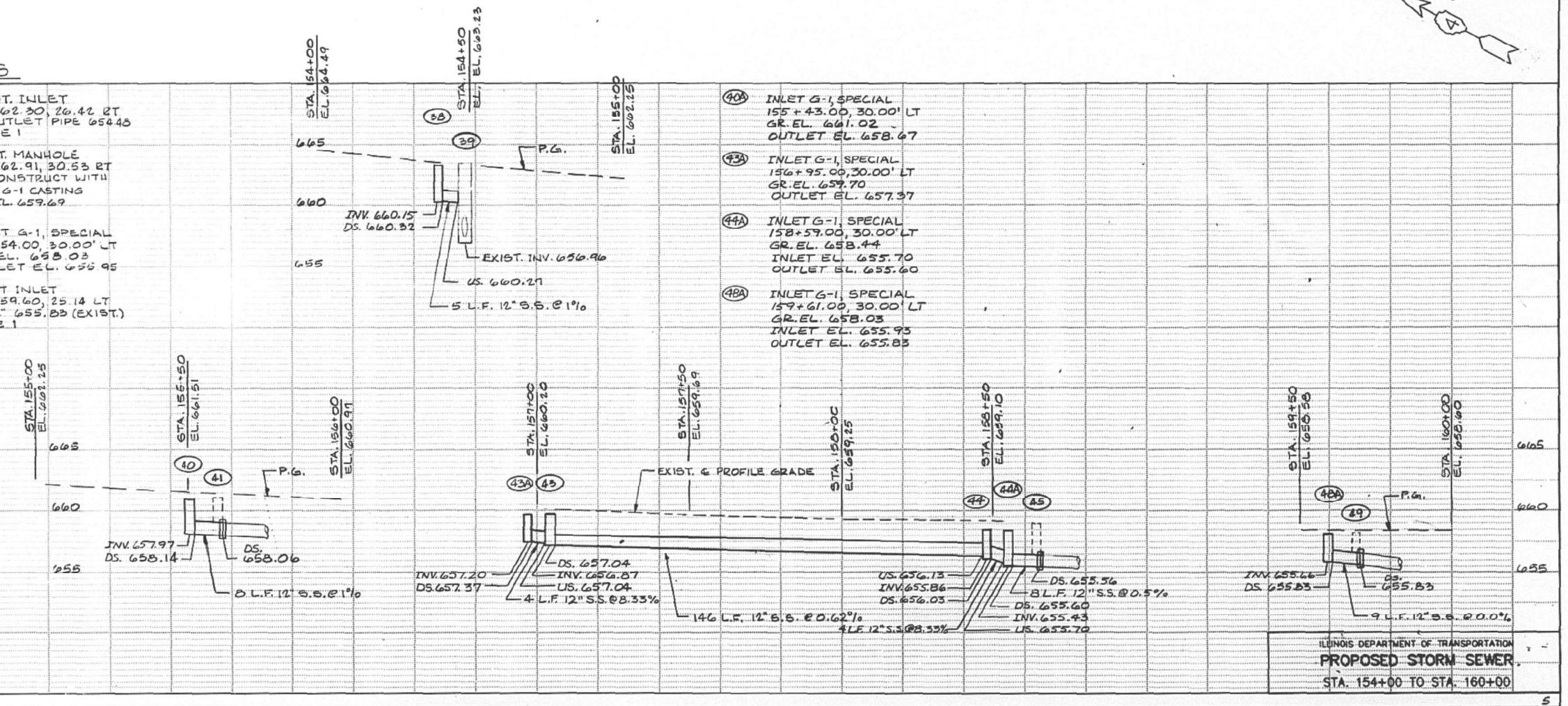


**FOR INFORMATION ONLY**

**DRAINAGE STRUCTURES**

- 38 INLET G-1, SPECIAL 154+40.44, 30.00' RT GR. EL. 663.26 OUTLET EL. 660.32
- 39 EXIST. INLET MANHOLE 154+40.44, 26.06' RT ADJUST WITH NEW TYPE 1 FRAME, CLOSED LID NEW PIPE INLET EL. 660.27
- 40 INLET G-1, SPECIAL 155+50.00, 30.00' LT GR. EL. 660.92 OUTLET EL. 658.14 INLET EL. 658.34
- 41 EXIST. INLET 155+50, 24.5' LT R-12" 658.06 (EXIST.) NOTE 1
- 42 EXIST. MANHOLE 155+50, 30.0' RT RECONSTRUCT WITH NEW G-1 CASTING GR. EL. 661.63
- 43 INLET G-1, SPECIAL 157+02.00, 30.00' LT GR. EL. 659.68 OUTLET EL. 657.04
- 44 INLET G-1, SPECIAL 158+52.00, 30.00' LT GR. EL. 658.47 INLET EL. 656.13 OUTLET EL. 656.03
- 45 EXIST. INLET 158+59.23, 25.14' LT R-12" 655.56 (EXIST.) NOTE 1

- 46 EXIST. INLET 158+62.30, 26.42' RT IE OUTLET PIPE 654.48 NOTE 1
- 47 EXIST. MANHOLE 158+62.91, 30.53' RT RECONSTRUCT WITH NEW G-1 CASTING GR. EL. 659.69
- 48 INLET G-1, SPECIAL 159+54.00, 30.00' LT GR. EL. 658.03 OUTLET EL. 655.95
- 49 EXIST. INLET 159+59.60, 25.14' LT R-12" 655.23 (EXIST.) NOTE 1



ILLINOIS DEPARTMENT OF TRANSPORTATION  
**PROPOSED STORM SEWER**  
STA. 154+00 TO STA. 160+00

MODEL: Default FILE NAME: p:\mtdm\room\dot\illinois\dot\pww\dot\Documents\DOT Office\Drawings\Projects\CDL\6882\CDL\6882-21-CDL.dwg

USER NAME = SUSER5	DESIGNED -	REVISED -
PLOT SCALE = 1:100	DRAWN -	REVISED -
PLOT DATE = 4/5/2021	CHECKED -	REVISED -
	DATE -	REVISED -

STATE OF ILLINOIS  
DEPARTMENT OF TRANSPORTATION

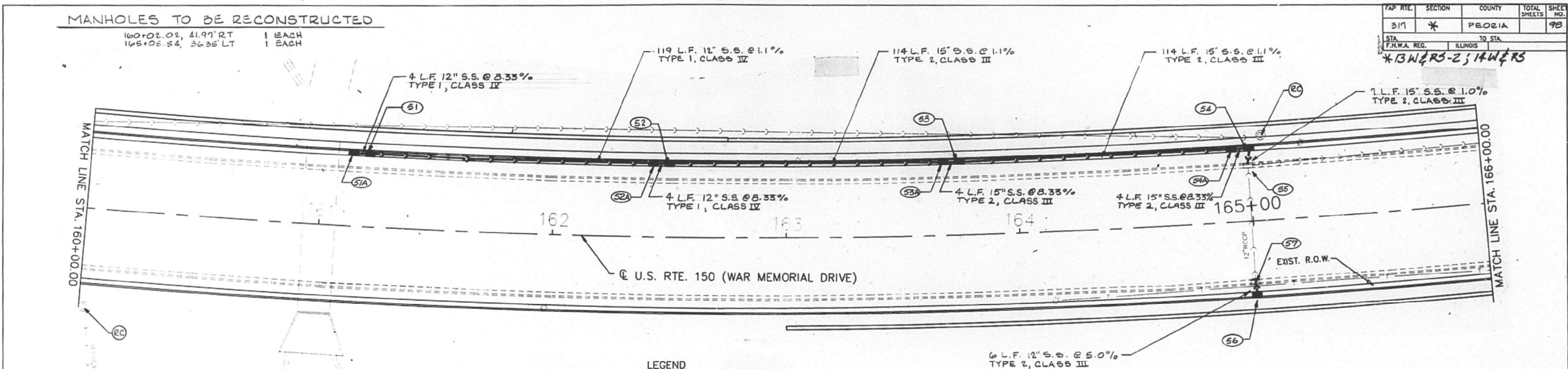
EXISTING PLANS FOR INFORMATION ONLY	
SCALE:	SHEET OF SHEETS STA. TO STA.

F.A.P. RTE.	SECTION	COUNTY	TOTAL SHEETS	SHEET NO.
317A	13-SW	PEORIA	23	19
CONTRACT NO. 68E82				
ILLINOIS FED. AID PROJECT				



F.A.P. RTE.	SECTION	COUNTY	TOTAL SHEETS	SHEET NO.
317	*	PEORIA	23	98
STA.	TO STA.			
F.H.W.A. REG.	ILLINOIS			

\*13 W & RS-2; 14 W & RS

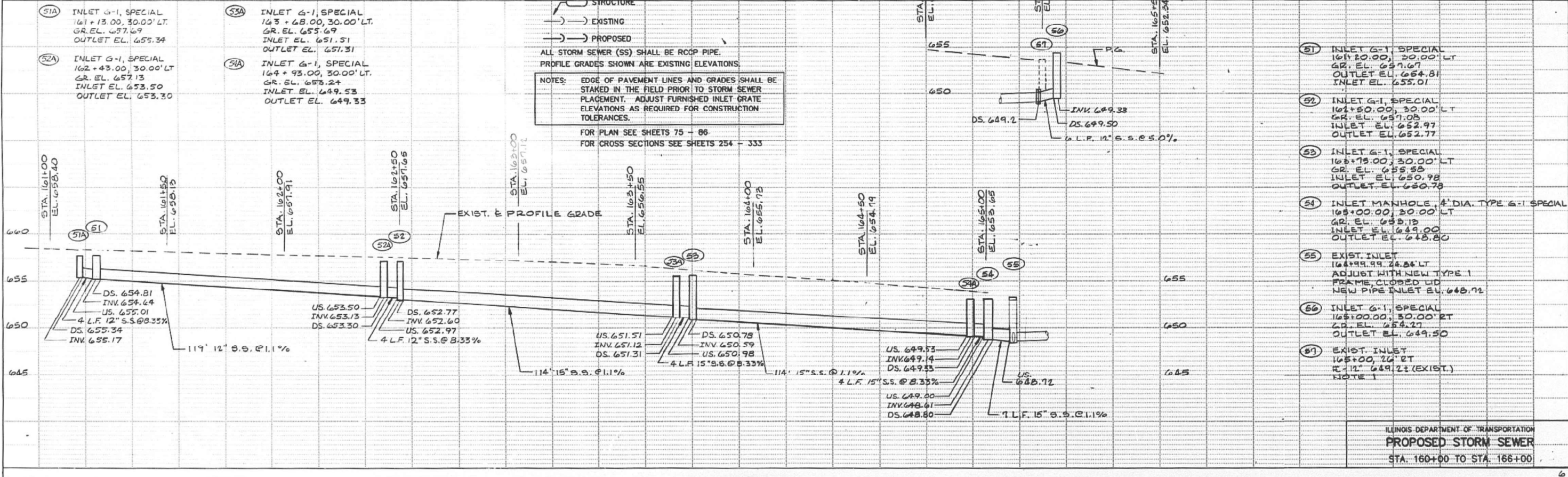


**FOR INFORMATION ONLY**

**LEGEND**

NOTE 1. REMOVE FRAME, GRATE, AND INLET. EXTEND NEW PIPE TO MEET EXISTING. PROVIDE COLLAR AROUND PIPE.

- 4" PIPE UNDERDRAIN
  - (A) MANHOLE TO BE ADJUSTED
  - (RC) MANHOLE TO BE RECONSTRUCTED
  - (R) DRAINAGE STRUCTURE TO BE REMOVED
  - STRUCTURE
  - EXISTING
  - PROPOSED
- ALL STORM SEWER (SS) SHALL BE RCP PIPE. PROFILE GRADES SHOWN ARE EXISTING ELEVATIONS.
- NOTES: EDGE OF PAVEMENT LINES AND GRADES SHALL BE STAKED IN THE FIELD PRIOR TO STORM SEWER PLACEMENT. ADJUST FURNISHED INLET GRATE ELEVATIONS AS REQUIRED FOR CONSTRUCTION TOLERANCES.
- FOR PLAN SEE SHEETS 75 - 86  
FOR CROSS SECTIONS SEE SHEETS 254 - 333



ILLINOIS DEPARTMENT OF TRANSPORTATION  
PROPOSED STORM SEWER  
STA. 160+00 TO STA. 166+00

MODEL: Default  
 FILE NAME: p:\projects\116882\CD\DWG\116882\CD\DWG\116882-21-1.dwg  
 PROJECT: 116882-21-1  
 SHEET: 23 OF 23  
 DATE: 4/5/2021

USER NAME = SUSER8	DESIGNED -	REVISED -
	DRAWN -	REVISED -
PLOT SCALE = 1:100	CHECKED -	REVISED -
PLOT DATE = 4/5/2021	DATE -	REVISED -

STATE OF ILLINOIS  
DEPARTMENT OF TRANSPORTATION

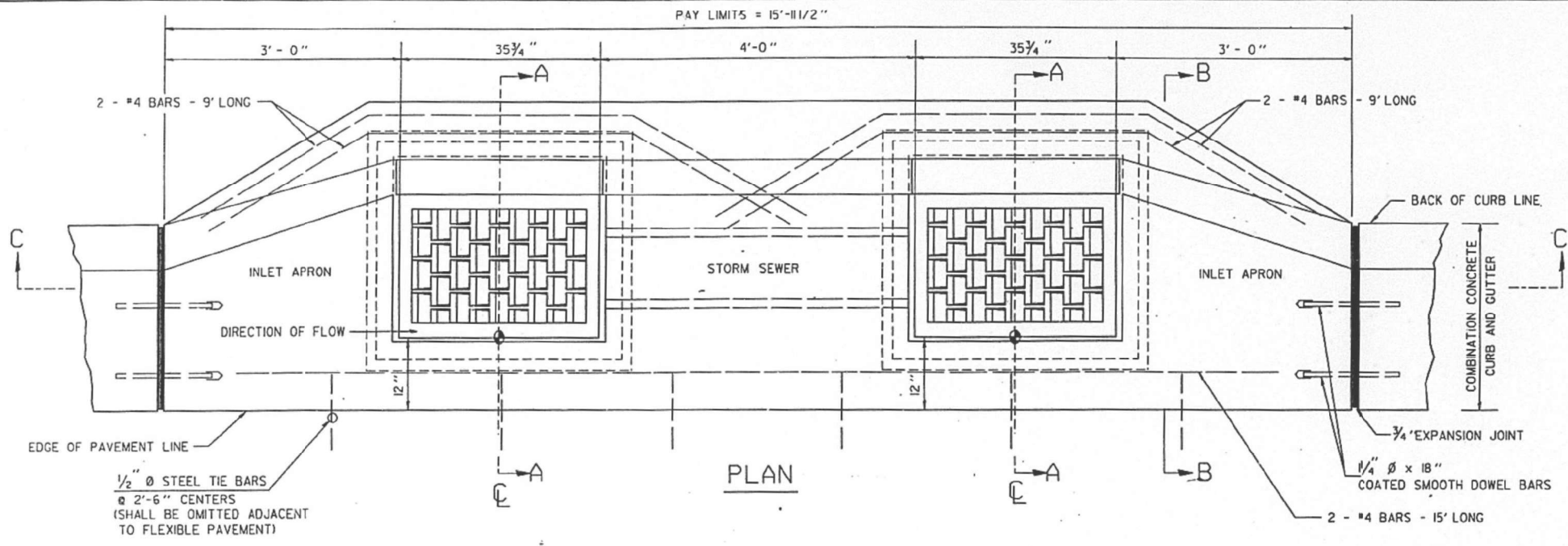
EXISTING PLANS  
FOR INFORMATION ONLY

SCALE: SHEET OF SHEETS STA. TO STA.

F.A.P. RTE.	SECTION	COUNTY	TOTAL SHEETS	SHEET NO.
317A	13-SW	PEORIA	23	20
ILLINOIS FED. AID PROJECT			CONTRACT NO. 68E82	

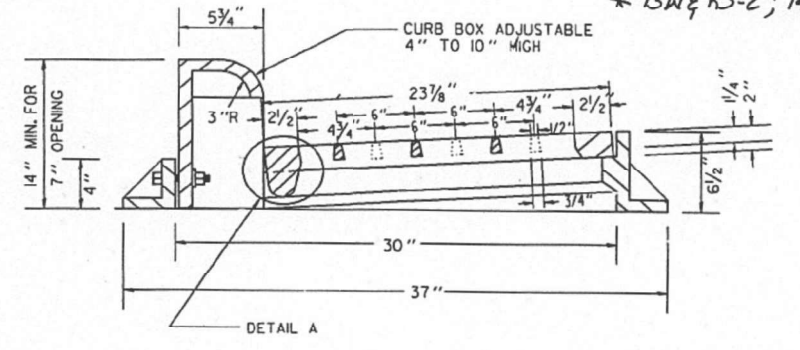
F.A. FILE	SECTION	COUNTY	TOTAL SHEETS	SHEET NO.
317	*	PEORIA		127
STA.	TO STA.			
FED. AID DIST. NO.	SLABBY	FED. AID PROJECT		

\* 13WERS-2; 14WERS

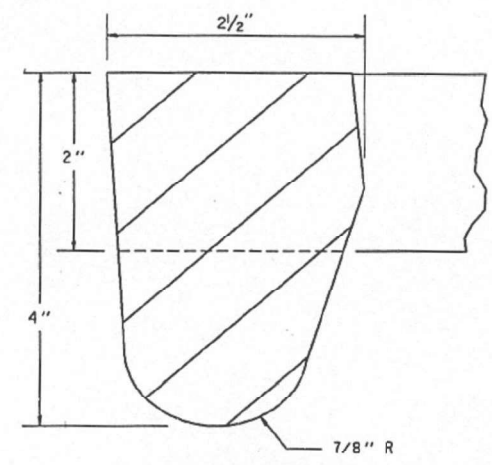


1/2" Ø STEEL TIE BARS  
@ 2'-6" CENTERS  
(SHALL BE OMITTED ADJACENT TO FLEXIBLE PAVEMENT)

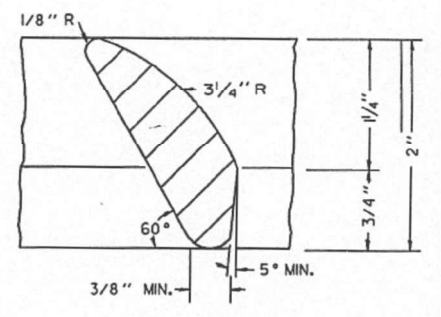
PLAN



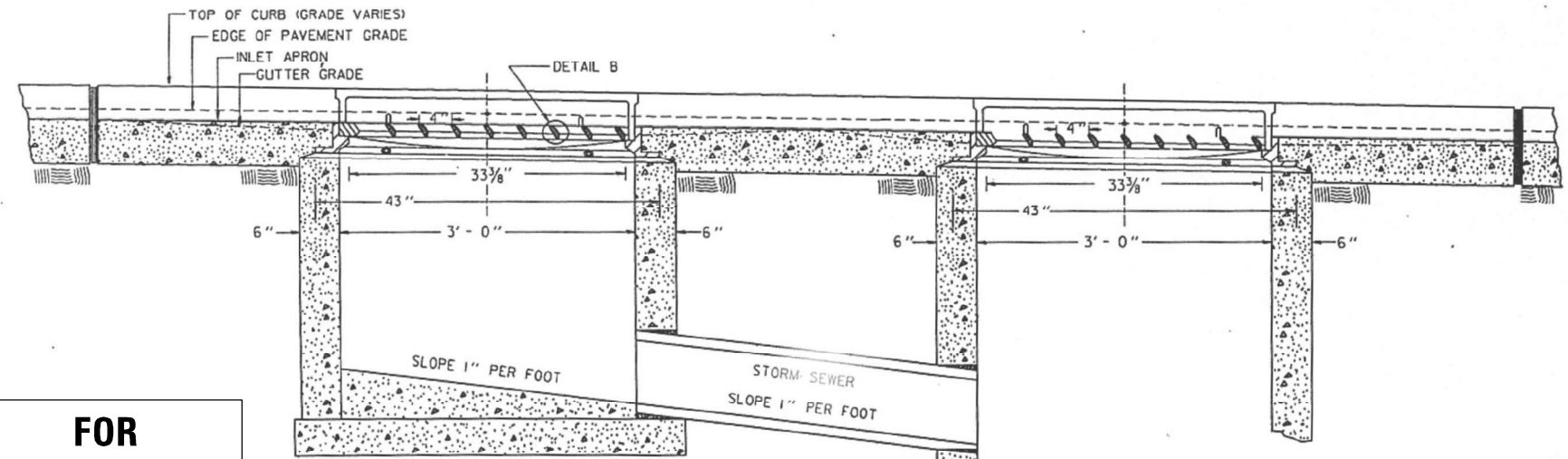
DETAIL A



DETAIL A

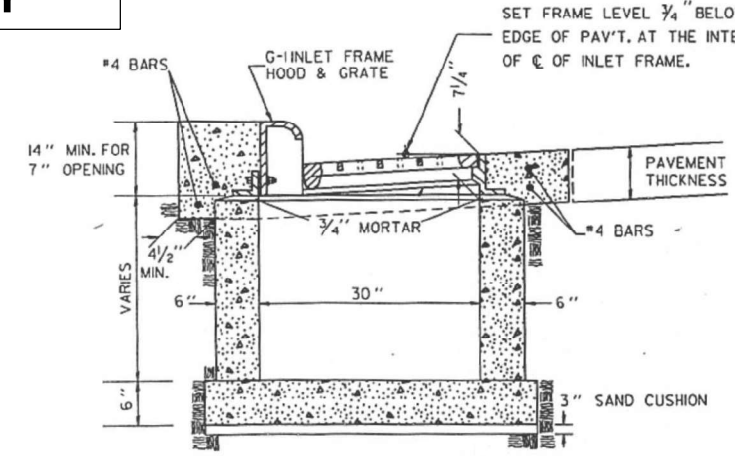


DETAIL B

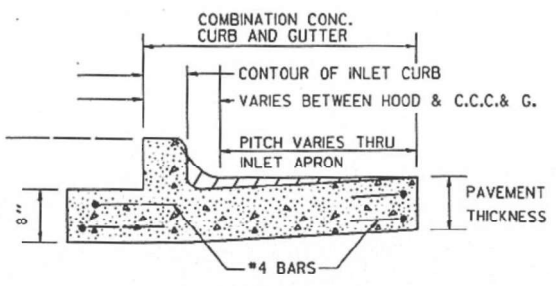


SECTION C - C

**FOR INFORMATION ONLY**



SECTION A - A



SECTION B - B

THIS ITEM, INLET, TYPE G-I DOUBLE, SPECIAL, SHALL BE CONSTRUCTED IN ACCORDANCE WITH SECTION 612 OF THE STANDARD SPECIFICATIONS.

ALL VOIDED AREAS SHALL BE BACKFILLED WITH TRENCH BACKFILL. INLET WALLS SHALL BE 6" CLASS "X" CONCRETE.

TIE BARS AND EXPANSION JOINTS SHALL BE CONSTRUCTED IN ACCORDANCE WITH STANDARD 2130.

THE FLOOR OF THE INLET BOXES SHALL BE SLOPED 1" PER FOOT TO MATCH FLOWLINE OF OUTLET STORM SEWER.

THIS ITEM SHALL INCLUDE THE INLET CONSTRUCTION COMPLETE IN PLACE AS INDICATED HEREIN, OF WHICH SHALL ALSO INCLUDE INLET CASTING, NECESSARY EXCAVATION, CLASS "X" CONCRETE, DOWEL BAR, REINFORCEMENT BARS, TRENCH BACKFILL, AND EXPANSION JOINT MATERIAL. THE 4 FOOT SECTION OF STORM SEWER SHALL BE PAID FOR AT THE CONTRACT UNIT PRICE FOR "STORM SEWER" OF THE SIZE SPECIFIED.

THIS ITEM SHALL BE PAID FOR AT THE CONTRACT UNIT PRICE EACH FOR "INLET TYPE G-I DOUBLE, SPECIAL" WHICH SHALL BE PAYMENT IN FULL FOR ALL LABOR, MATERIAL, TOOLS, EQUIPMENT NECESSARY TO PERFORM THIS ITEM OF WORK AS INDICATED.

**FRAME AND GRATE**

MATERIAL - CAST GRAY IRON ASTM A-48-83 CLASS 35B  
TOTAL WEIGHT 640 LBS.

REVISIONS	
NAME	DATE

ILLINOIS DEPARTMENT OF TRANSPORTATION  
**INLET, TYPE G-I DOUBLE, SPECIAL (VANE GRATE)**  
CADD STANDARD : B-4.18  
SCALE: NOT DRAWN TO SCALE  
DATE 1 / 25 / 91  
DRAWN BY CADD  
CHECKED BY

USER NAME = SUSERS	DESIGNED -	REVISED -
PLOT SCALE = 1:100	DRAWN -	REVISED -
PLOT DATE = 4/5/2021	CHECKED -	REVISED -
	DATE -	REVISED -

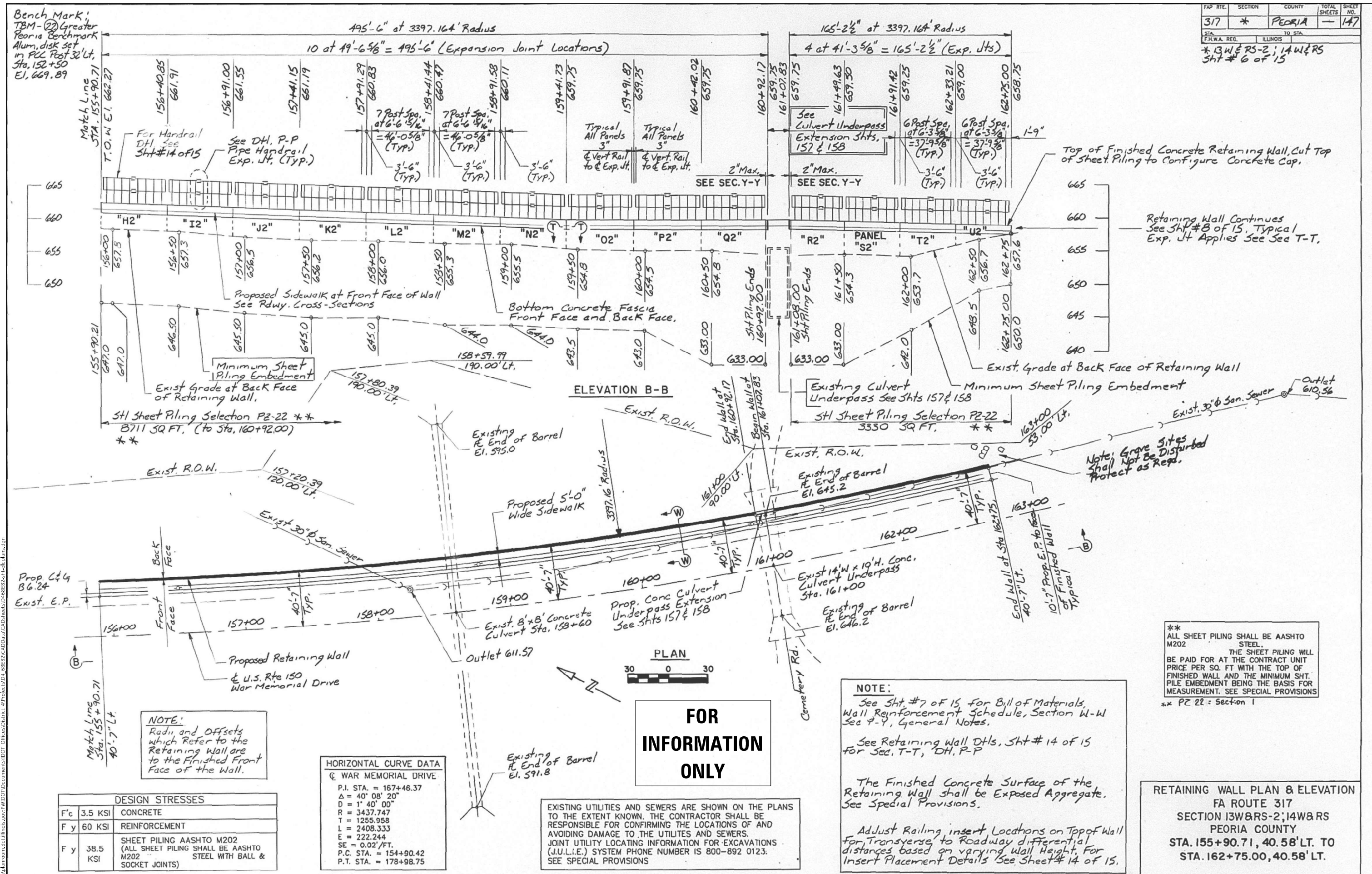
STATE OF ILLINOIS  
DEPARTMENT OF TRANSPORTATION

EXISTING PLANS FOR INFORMATION ONLY	
SCALE:	SHEET OF SHEETS STA. TO STA.

F.A.P. RTE.	SECTION	COUNTY	TOTAL SHEETS	SHEET NO.
317A	13-SW	PEORIA	23	21
CONTRACT NO. 68E82			ILLINOIS FED. AID PROJECT	

MODEL: Default FILE NAME: p:\pub\mroom.dwg PROJECT: PWDOT\Documents\DOT Office\District 4\Projects\DDA\_68E82\CADD\317A\CD\Sheet\13-SW\68E82-21-2.dwg





**NOTE:**  
Radii and Offsets which Refer to the Retaining Wall are to the Finished Front Face of the Wall.

**HORIZONTAL CURVE DATA**  
Q WAR MEMORIAL DRIVE

P.I. STA.	= 167+46.37
Δ	= 40° 08' 20"
R	= 1' 40' 00"
R	= 3437.747
T	= 1255.958
L	= 2408.333
E	= 222.244
SE	= 0.02'/FT.
P.C. STA.	= 154+90.42
P.T. STA.	= 178+98.75

**DESIGN STRESSES**

F <sub>c</sub>	3.5 KSI	CONCRETE
F <sub>y</sub>	60 KSI	REINFORCEMENT
F <sub>y</sub>	38.5 KSI	SHEET PILING AASHTO M202 (ALL SHEET PILING SHALL BE AASHTO M202 STEEL WITH BALL & SOCKET JOINTS)

EXISTING UTILITIES AND SEWERS ARE SHOWN ON THE PLANS TO THE EXTENT KNOWN. THE CONTRACTOR SHALL BE RESPONSIBLE FOR CONFIRMING THE LOCATIONS OF AND AVOIDING DAMAGE TO THE UTILITIES AND SEWERS. JOINT UTILITY LOCATING INFORMATION FOR EXCAVATIONS (J.U.L.I.E.) SYSTEM PHONE NUMBER IS 800-892 0123. SEE SPECIAL PROVISIONS

**NOTE:**  
See Sht # 7 of 15 for Bill of Materials, Wall Reinforcement Schedule, Section W-W See 9-Y, General Notes.  
See Retaining Wall Dtls, Sht # 14 of 15 For Sec. T-T, DH, P-P  
The Finished Concrete Surface of the Retaining Wall shall be Exposed Aggregate. See Special Provisions.  
Adjust Railing insert Locations on Top of Wall For Transverse to Roadway differential distances based on varying wall Height. For Insert Placement Details See Sheet # 14 of 15.

\*\* ALL SHEET PILING SHALL BE AASHTO M202 STEEL. THE SHEET PILING WILL BE PAID FOR AT THE CONTRACT UNIT PRICE PER SQ. FT WITH THE TOP OF FINISHED WALL AND THE MINIMUM SHT. PILE EMBEDMENT BEING THE BASIS FOR MEASUREMENT. SEE SPECIAL PROVISIONS  
\*\* PZ 22 = Section 1

**RETAINING WALL PLAN & ELEVATION**  
FA ROUTE 317  
SECTION 13W&RS-2; 14W&RS  
PEORIA COUNTY  
STA. 155+90.71, 40.58' LT. TO  
STA. 162+75.00, 40.58' LT.

**FOR INFORMATION ONLY**

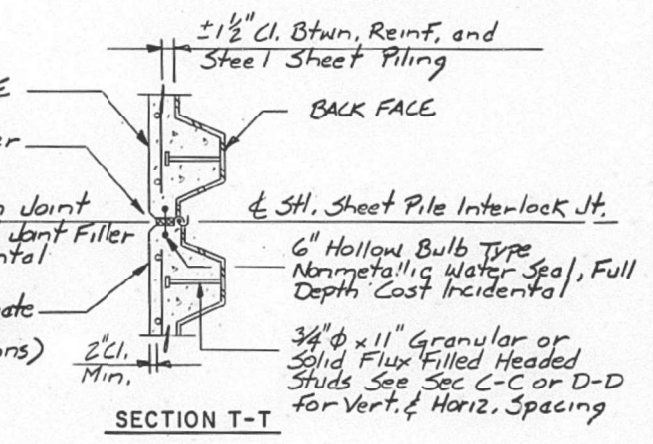
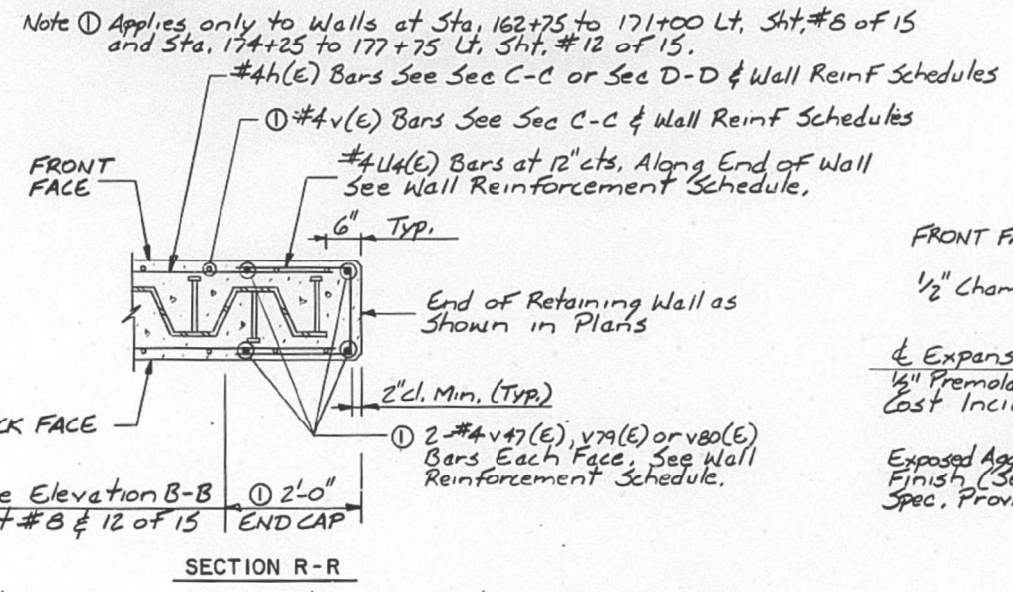
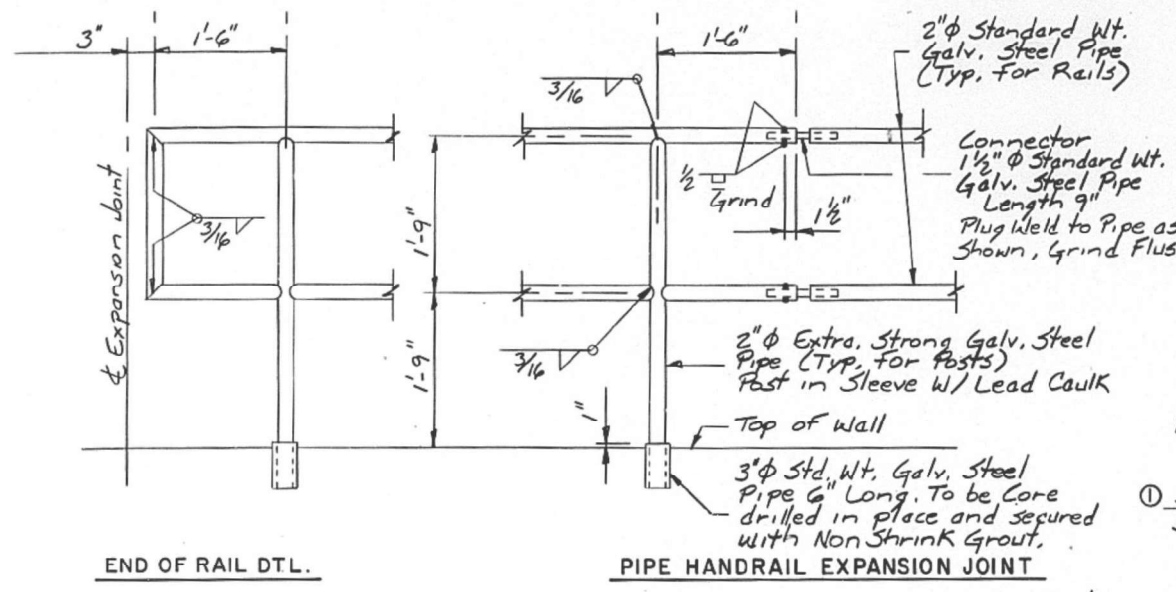
**STATE OF ILLINOIS**  
**DEPARTMENT OF TRANSPORTATION**

**EXISTING PLANS**  
**FOR INFORMATION ONLY**

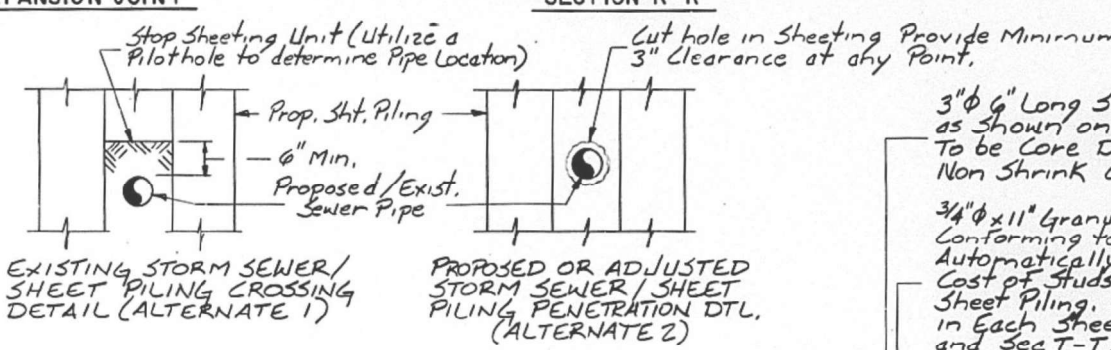
USER NAME = SUSER8	DESIGNED -	REVISED -
PLOT SCALE = 1:100	DRAWN -	REVISED -
PLOT DATE = 4/5/2021	CHECKED -	REVISED -
	DATE -	REVISED -



F.A.P. RTE.	SECTION	COUNTY	TOTAL SHEETS	SHEET NO.
317	*	PEORIA	23	155
STA.	TO STA.			
F.H.W.A. REG.	ILLINOIS			
*13W & RS-2; 14W & RS Sht. #14 of 15				



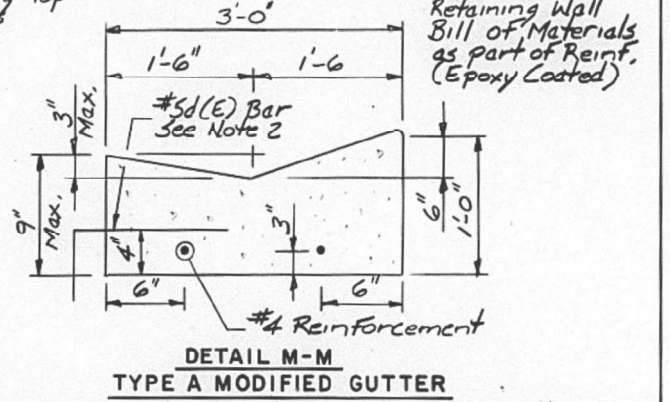
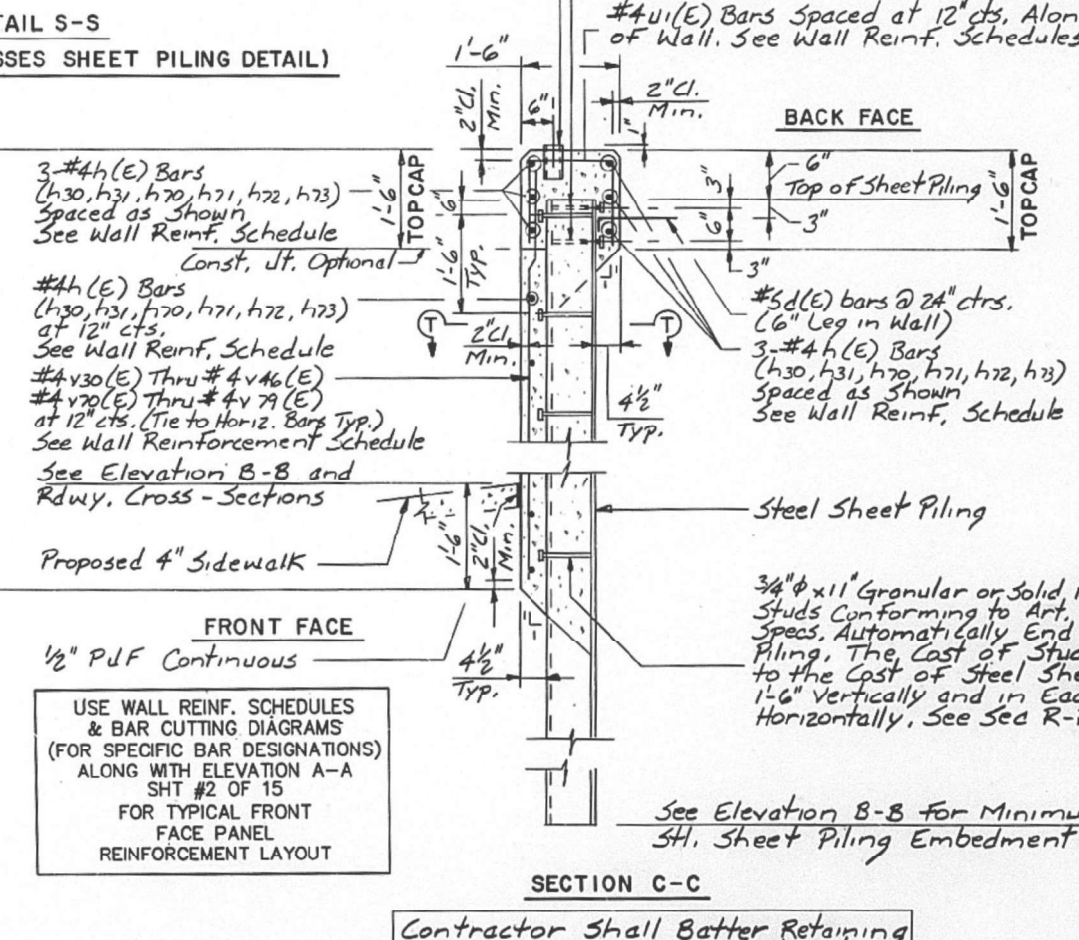
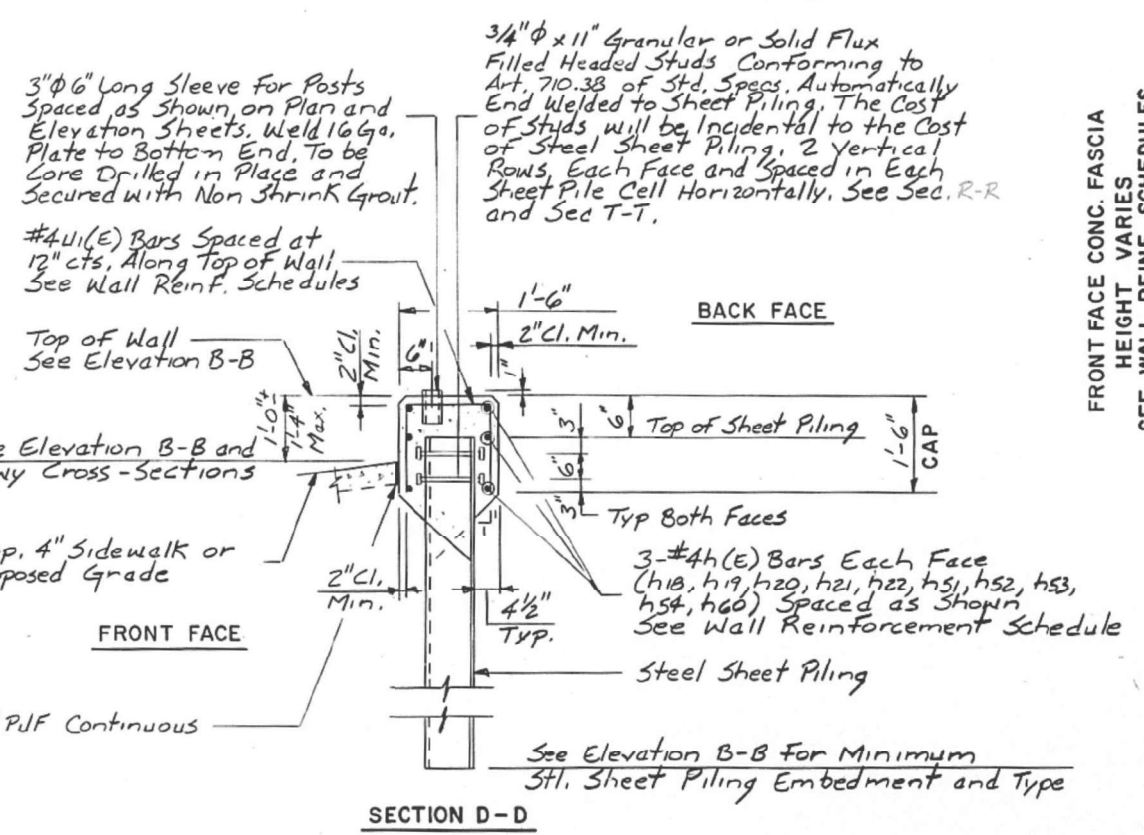
**NOTE:**  
 See Retaining Wall Plan & Elevation Sheets Shts. 1, 5, 6, 8, 10, & 12 of 15 for Elevation B-B  
 All Concrete Edges Shall have 3/4" Chamfers Unless Noted Otherwise.  
 The Finished Concrete Surface of the Retaining Walls Shall be Exposed Aggregate. See Spec. Provisions  
 All Reinforcement Indicated with an (E) is Epoxy Coated, Min. 1'-4" Bar Lap.



3" φ 6" Long Sleeve for Posts Spaced as Shown on Plan and Elevation Sheets. To be Core Drilled in place and secured with Non Shrink Grout. See Special Provisions  
 3/4" φ x 11" Granular or Solid Flux Filled Heated Studs Conforming to Art. 710.38 of Standard Specs. Automatically End Welded to Sheet Piling. The Cost of Studs will be Incidental to the Cost of Steel Sheet Piling. 2 Vertical Rows as Shown and Spaced in Each Sheet Pile Cell Horizontally. See Sec. R-R and Sec T-T.  
 #4u(E) Bars Spaced at 12" cts. Along Top of Wall. See Wall Reinf. Schedules

**FOR INFORMATION ONLY**

**Note 2**  
 Included in Retaining Wall Bill of Materials as part of Reinf. (Epoxy Coated)



The gutter will be Paid for at the Contract Unit Price Per Linear Foot for Concrete Gutter, Type A (Modified), which shall include the Cost of the sub-base, joints and Reinforcement.

USE WALL REINF. SCHEDULES & BAR CUTTING DIAGRAMS (FOR SPECIFIC BAR DESIGNATIONS) ALONG WITH ELEVATION A-A SHT #2 OF 15 FOR TYPICAL FRONT FACE PANEL REINFORCEMENT LAYOUT

Contractor Shall Batter Retaining Wall 1/4"/Ft. of Vertical Height

**RETAINING WALL DETAILS**  
 FA ROUTE 317  
 SECTION 13W & RS-2; 14W & RS  
 PEORIA COUNTY  
 STA. 150+00.00, 40.58' LT. TO 162+75.00, 40.58' LT.  
 STA. 162+75.00, 40.58' LT. TO 171+00.00, 40.58' LT.  
 STA. 169+00.00, 37.58' RT. TO 175+25.00, 37.58' RT.  
 STA. 174+25.00, 52.58' LT. TO 177+75.00, 38.56' LT.

USER NAME = SUSERS	DESIGNED -	REVISED -
DRAWN -	CHECKED -	REVISED -
PLOT SCALE = 1:100	DATE -	REVISED -
PLOT DATE = 4/5/2021		

STATE OF ILLINOIS  
 DEPARTMENT OF TRANSPORTATION

EXISTING PLANS FOR INFORMATION ONLY	
SCALE:	SHEET OF SHEETS STA. TO STA.

F.A.P. RTE.	SECTION	COUNTY	TOTAL SHEETS	SHEET NO.
317A	13-SW	PEORIA	23	23
CONTRACT NO. 68E82				
ILLINOIS FED. AID PROJECT				