

STATE OF ILLINOIS
DEPARTMENT OF TRANSPORTATION

RTE.	SECTION	COUNTY	TOTAL SHEETS	SHEET NO.
VAR	D4 WEED SPRAYING 2021	VARIOUS	21	1
		ILLINOIS	CONTRACT NO. 68G08	

INDEX OF SHEETS:

- 1 COVER SHEET
- 2 GENERAL NOTES
- 3 SUMMARY OF QUANTITIES
- 4-13 LOCATION MAPS
- 14-20 SCHEDULE OF QUANTITIES
- 21 HERBICIDE DOSAGE CHART

STANDARDS

- 701001-02 701301-04
- 701006-05 701311-03
- 701011-04 701426-09
- 701101-05 701428-01
- 701106-02 701901-08

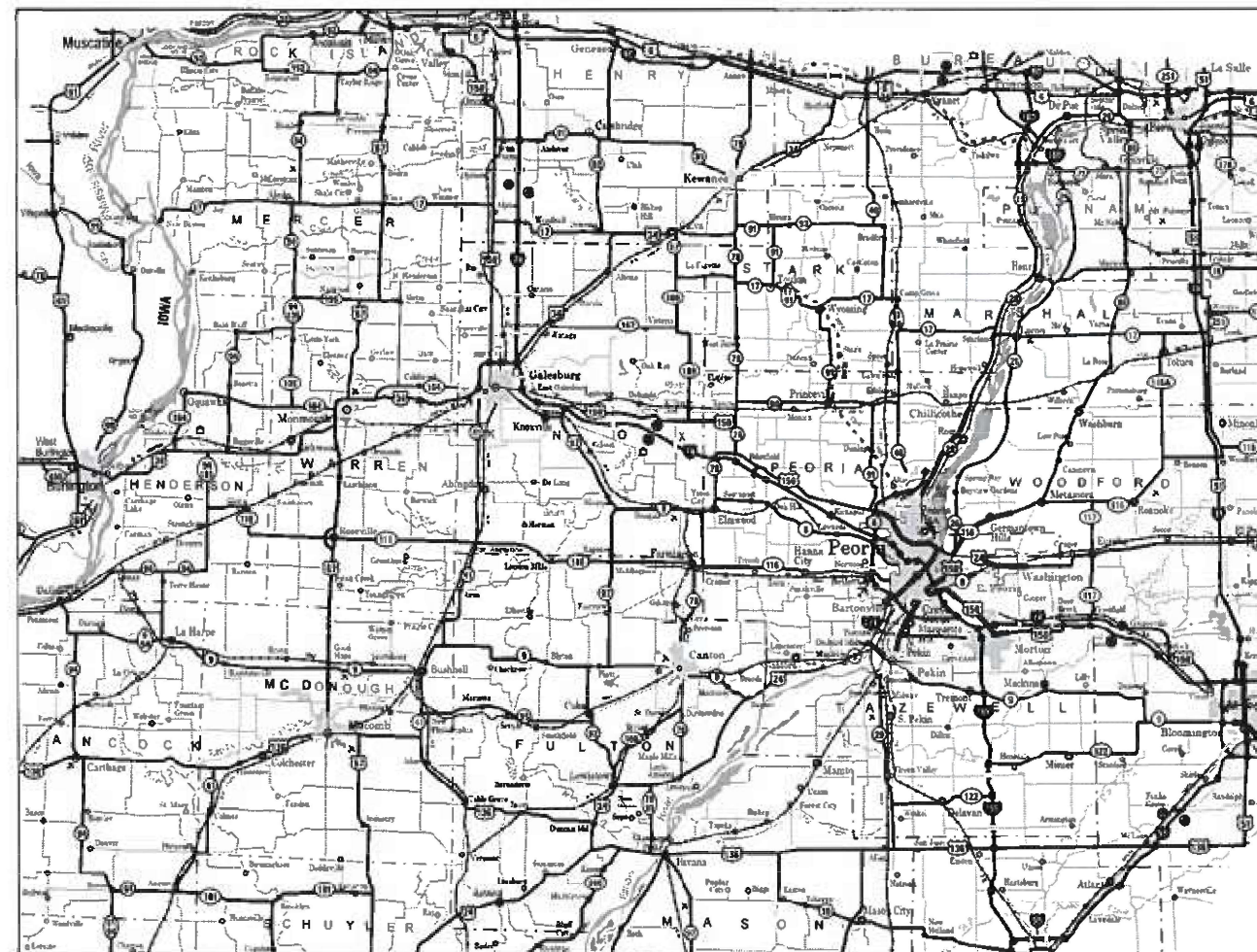
**PROPOSED
HIGHWAY PLANS**

VARIOUS ROUTE
SECTION D4 WEED SPRAYING 2021

TYPE of IMPROVEMENT: WEED SPRAYING
VARIOUS COUNTIES

C-94-015-21

D-94-010-21



AREA TO BE SPRAYED: 2109.5 ACRES

IMPROVEMENT DESCRIPTION: THIS PROJECT
CONSISTS OF WEED SPRAYING AT VARIOUS
LOCATIONS WITHIN DISTRICT 4.

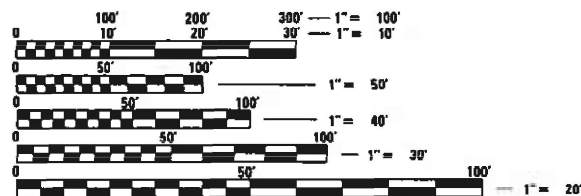
STATE OF ILLINOIS
DEPARTMENT OF TRANSPORTATION

SUBMITTED *October 22, 2020*
Tara A. Janssen
REGIONAL ENGINEER

December 4, 2020
Scott A. Etk
ENGINEER OF DESIGN AND ENVIRONMENT

December 4, 2020
James J. Quinn
DIRECTOR OF HIGHWAYS PROJECT IMPLEMENTATION

PRINTED BY THE AUTHORITY
OF THE STATE OF ILLINOIS



FULL SIZE PLANS HAVE BEEN PREPARED USING STANDARD
ENGINEERING SCALES. REDUCED SIZED PLANS WILL NOT
CONFORM TO STANDARD SCALES. IN MAKING MEASUREMENTS
ON REDUCED PLANS, THE ABOVE SCALES MAY BE USED.

J.U.L.I.E.
JOINT UTILITY LOCATION INFORMATION FOR EXCAVATION
1-800-892-0123
OR 811

PROJECT ENGINEER: MAUREEN ADDIS (309) 671-3454
PROJECT MANAGER: SUSAN DAVIS (309) 671-4485
CATALOG NO. 036129-00D
CONTRACT NO. 68G08

NO SPRAY AREAS

- I-155 MM 22-29 NB & SB
- I-155 MM 25 Tremont Interchange (Rattlesnake Master Plant)
- US 34 & Henderson Street (Rattlesnake Master Plant)
- I-74 MM 85 WB/EB Perennial Bed and Under High Tension Power Lines
- I-74 MM 62 WB (See Map)
- I-74 MM 58 WB Perennial Bed
- I-74 MM 91-93 Downtown Peoria Planting (with Exceptions Listed in Plans)
- US 34 & Henderson Street NW & SW Interchange (Rattlesnake Master Plant)

Notes:

1. Areas not accessible by spray rigs will be hand-sprayed with spray gun reaching at least 125 feet.
2. Spray rigs shall be equipped with high-flotation tires to access soft infields.
3. Non-working equipment shall be repaired immediately with no additional time allotted to the contractor for repairs.
4. Spray operators shall keep a copy of contract spray locations in the rig at all times.
5. Wind speed must be < 15 mph in order to perform work.
6. Temperature must be > 45 in order to perform work.

**FOR INFORMATION IN CASE OF
A CHEMICAL EMERGENCY CALL:**

DOW AGRO AT 1-800-263-1196

MODEL: Default
 FILE NAME: p:\pub\mroom.edu\illinois.gov\PWIDOT\Documents\DOT_Offices\District 4\Projects\DL_68G08\CADD\DL_68G08-CADD.dwg

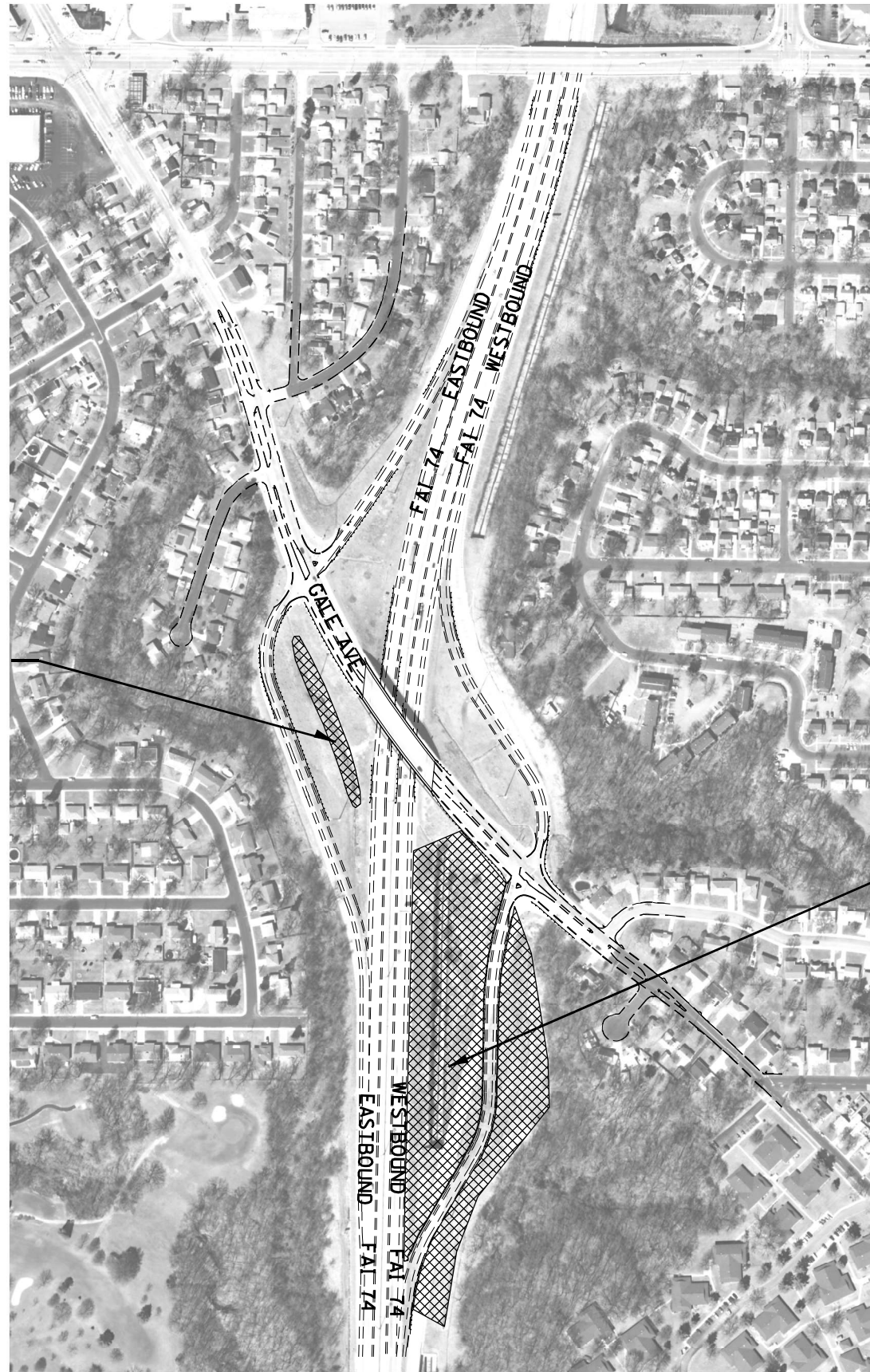
USER NAME = everscl	DESIGNED -	REVISED -
	DRAWN -	REVISED -
PLOT SCALE = 100,0000' / in.	CHECKED -	REVISED -
PLOT DATE = 4/13/2021	DATE -	REVISED -

**STATE OF ILLINOIS
DEPARTMENT OF TRANSPORTATION**

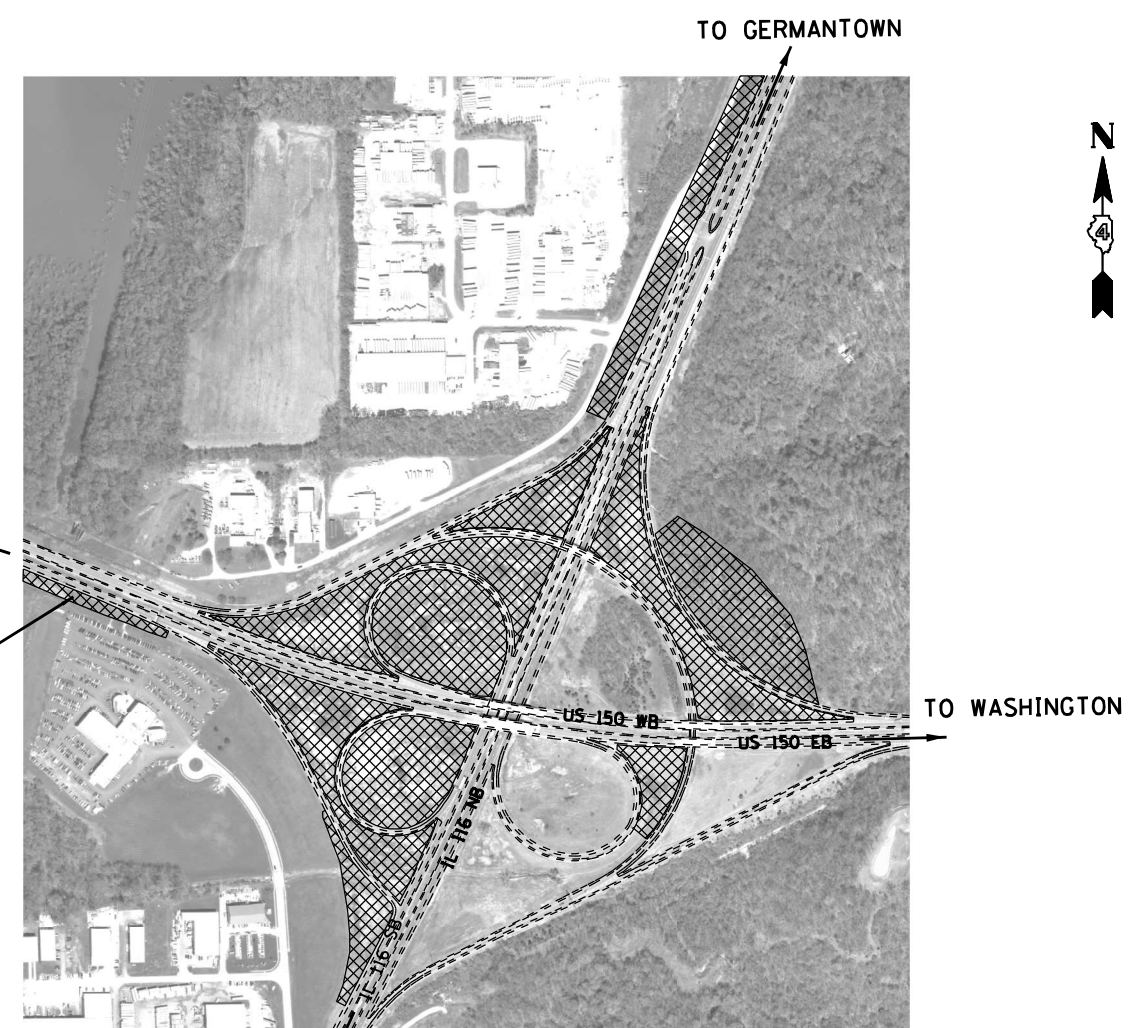
GENERAL NOTES

SCALE: SHEET OF SHEETS STA. TO STA.

F.A. RTE.	SECTION	COUNTY	TOTAL SHEETS	SHEET NO.
VAR.	D4 WEED SPRAYING 2021	VARIOUS	21	2
			CONTRACT NO. 68G08	
			ILLINOIS FED. AID PROJECT	



MM 90 Exit I-74 / GALE AVE. INTERCHANGE



US 150 / IL 116 INTERCHANGE



BRUSH,
CANADA THISTLE
AND TEASEL
VERY STEEP
MAY REQUIRE SS•

LEGEND



SS = Spot Spraying



BR = Brush



BS = Blanket Spraying

SS* = May Require Hand Spray/Back Pack

TSL = Teasel

THSL = Thistle

CV = Crown Vetch

FL = Fence Line

(++) = Engineer must be present during spray operations

NS = No Spray

Wet = Area is Seasonally Wet

PR = Prairie - Consult with R.E.

Edges = Spray mowed edge only & consult with R.E.

Heavy = Heavy Infestation

SRRA = Spoon River Rest Area

STP = Steep Hillside

(*) = For Information Only

NOTE: Ariel maps are provided as a reference to the surrounding vegetation.

NOT TO SCALE

MODEL: Default
 FILE NAME: p:\mhammon.dot\illinois.gov\PIWDOT\Documents\IBOT_Offices\District_4\Projects\DL_68G08\CADD\Map\68G08-CADD.dgn

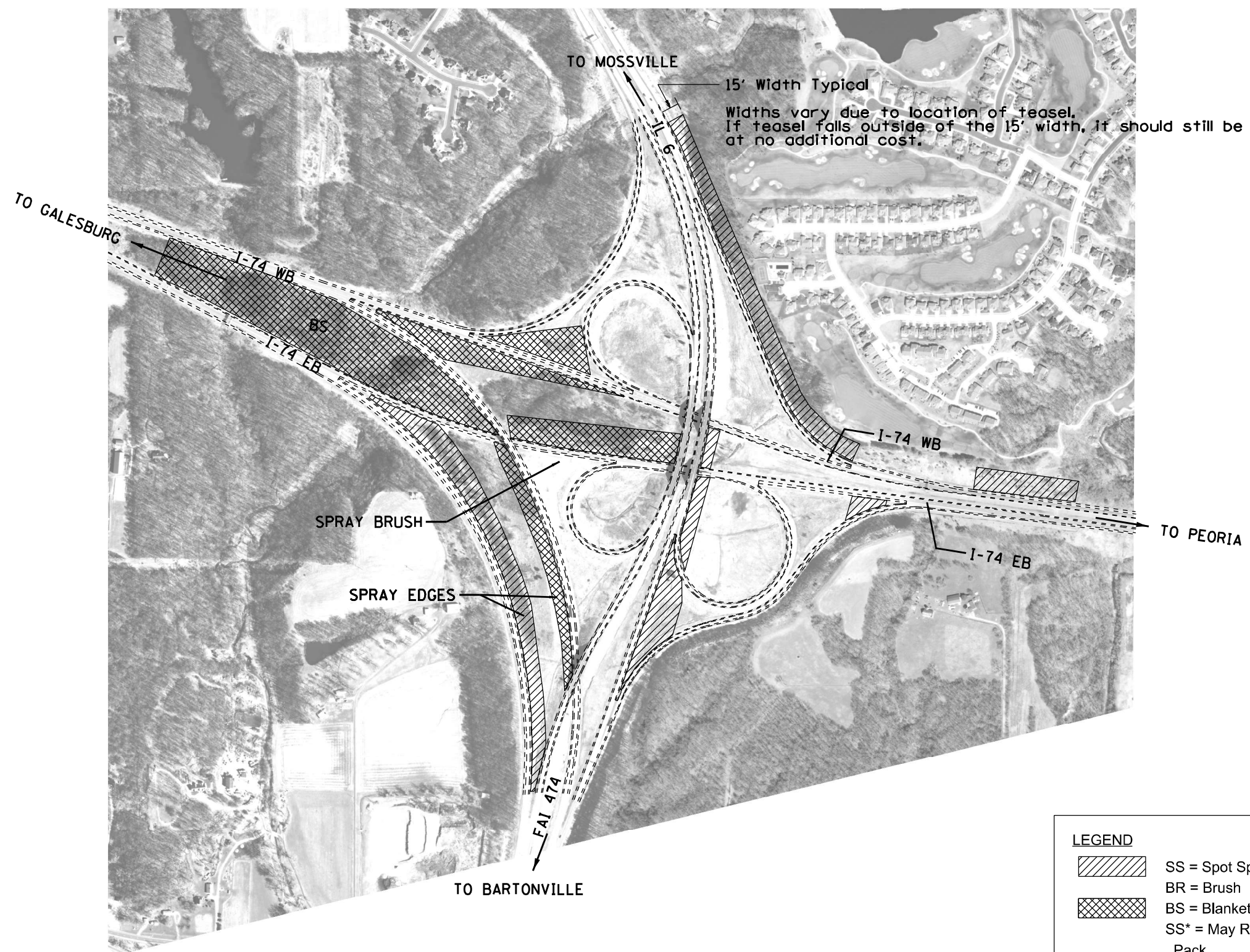
USER NAME = everscl	DESIGNED -	REVISED -
	DRAWN -	REVISED -
PLOT SCALE = 100,000' / in.	CHECKED -	REVISED -
PLOT DATE = 10/23/2020	DATE -	REVISED -

**STATE OF ILLINOIS
DEPARTMENT OF TRANSPORTATION**

**LOCATION MAP
I-74 /GALE AVE. AND US 150 /IL 116 INTERCHANGES**

SCALE: SHEET OF SHEETS STA. TO STA.

F.A. RTE.	SECTION	COUNTY	TOTAL SHEETS	SHEET NO.
VAR.	D4 WEEK SPRAYING 2021	VARIOUS	21	4
			CONTRACT NO. 68G08	
		ILLINOIS FED. AID PROJECT		



LEGEND	
	SS = Spot Spraying (only teasel rosettes)
	BR = Brush
	BS = Blanket Spraying
	SS* = May Require Hand Spray/Back Pack
	TSL = Teasel
	THSL = Thistle
	CV = Crown Vetch
	FL = Fence Line
	(++) = Engineer must be present during spray operations
	NS = No Spray
	Wet = Area is Seasonally Wet
	PR = Prairie - Consult with R.E.
	Edges = Spray mowed edge only & consult with R.E.
	Heavy = Heavy Infestation
	SRRA = Spoon River Rest Area
	STP = Steep Hillside
	(*) = For Information Only

NOTE: Ariel maps are provided as a reference to the surrounding vegetation. Steep slopes in various locations.

NOT TO SCALE

MODEL: Default
 FILE NAME: p:\m\baronm.dwg
 PROJECT: I-74/474/IL6 Interchange
 OFFICE: District 4
 DATE: 10/23/2020

USER NAME = everscl	DESIGNED -	REVISED -
	DRAWN -	REVISED -
PLOT SCALE = 100,0000' / in.	CHECKED -	REVISED -
PLOT DATE = 10/23/2020	DATE -	REVISED -

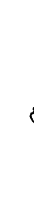
STATE OF ILLINOIS
DEPARTMENT OF TRANSPORTATION

LOCATION MAP (EXIT 87A & 87B)			
I-74, I-474, IL 6 INTERCHANGE			
SCALE:	SHEET	OF SHEETS	STA. TO STA.

F.A. RTE.	SECTION	COUNTY	TOTAL SHEETS	SHEET NO.
VAR.	D4 WEEK SPRAYING 2021	VARIOUS	21	5
			CONTRACT NO. 68G08	
ILLINOIS FED. AID PROJECT				

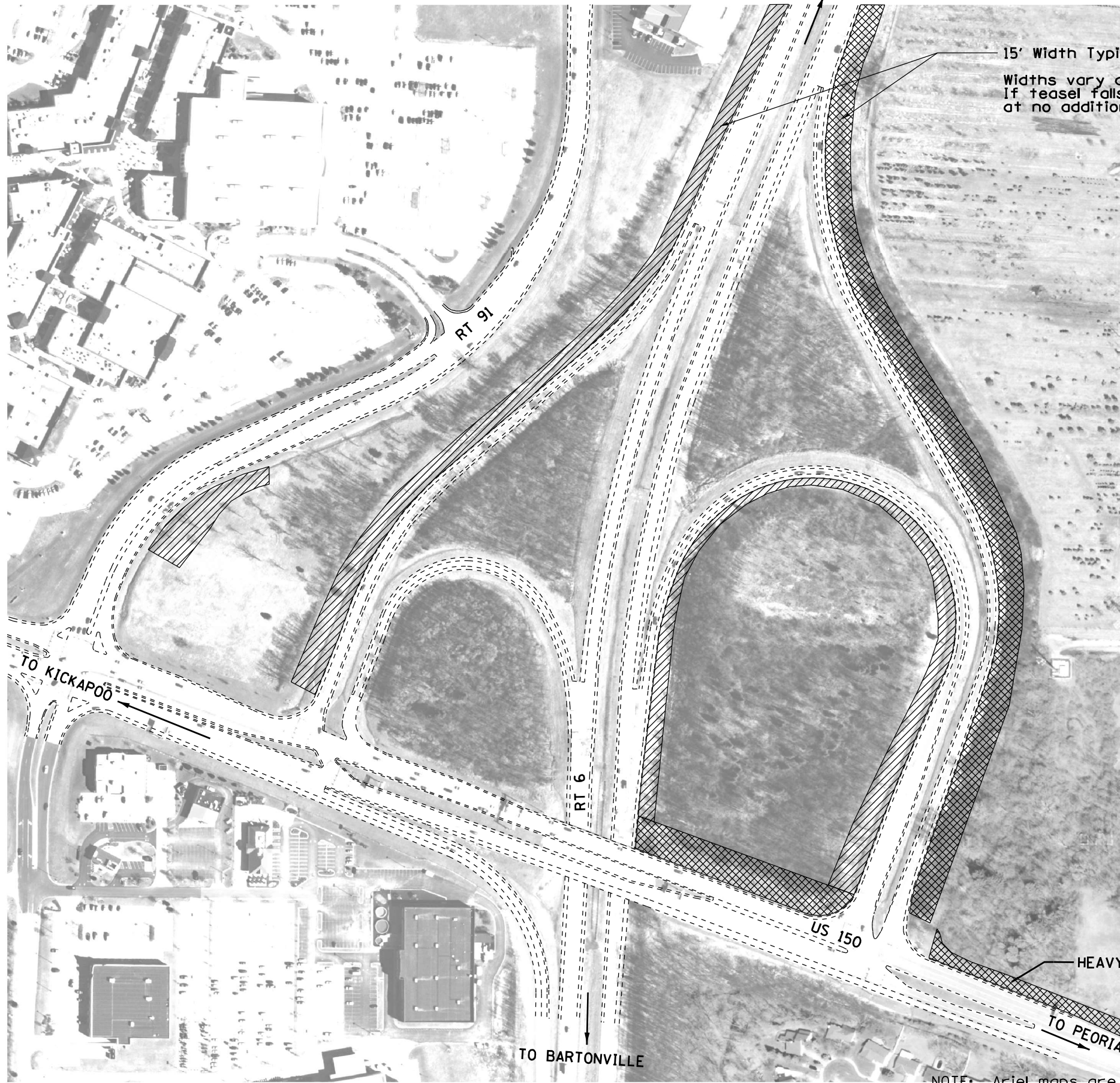
TO MOSSVILLE

15' Width Typical
 Widths vary due to location of teasel.
 If teasel falls outside of the 15' width, it should still be sprayed
 at no additional cost.



LEGEND

- SS = Spot Spraying
- BR = Brush
- BS = Blanket Spraying
- SS* = May Require Hand Spray/Back Pack
- TSL = Teasel
- THSL = Thistle
- CV = Crown Vetch
- FL = Fence Line
- (++) = Engineer must be present during spray operations
- NS = No Spray
- Wet = Area is Seasonally Wet
- PR = Prairie - Consult with R.E.
- Edges = Spray mowed edge only & consult with R.E.
- Heavy = Heavy Infestation
- SRRA = Spoon River Rest Area
- STP = Steep Hillside
- (*) = For Information Only



NOTE: Ariel maps are provided as a reference to the surrounding vegetation.

NOT TO SCALE

MODEL: Default
 FILE: \\nrc\pub\harcam\dat\illinois\pvt\WIDOT\Documents\DOT Offices\Bartlett\p\projects\04_68G08\CAD\DATA\CAD\Drawings\0468G08-CADD.dwg

USER NAME = everscl	DESIGNED -	REVISED -
	DRAWN -	REVISED -
PLOT SCALE = 100.0000' / in.	CHECKED -	REVISED -
PLOT DATE = 10/23/2020	DATE -	REVISED -

**STATE OF ILLINOIS
 DEPARTMENT OF TRANSPORTATION**

LOCATION MAP (EXIT 2)			
RT 6 / US 150 INTERCHANGE			
SCALE:	SHEET	OF SHEETS	STA. TO STA.

F.A. RTE.	SECTION	COUNTY	TOTAL SHEETS	SHEET NO.
VAR.	D4 WEED SPRAYING 2021	VARIOUS	21	6
			CONTRACT NO. 68G08	
		ILLINOIS	FED. AID PROJECT	

TO EDELSTEIN

STEEP HILLSIDE
HEAVY THSL

TO MOSSVILLE

RT 6

RT 40 /
KNOXVILLE

TO PEORIA



TO PEORIA

PR ++

PR ++

HEAVY TSL

SYMBOL NOTES:

- 1. INFIELDS HAVE GOOD QUALITY PRAIRIE, SPOT SPRAY INDIVIDUAL TSL PLANTS ONLY.
- 2. AREAS HATCHED HAVE DENSE TEASEL COLONIES.

LEGEND



SS = Spot Spraying



BR = Brush



BS = Blanket Spraying

SS* = May Require Hand Spray/Back Pack

TSL = Teasel

THSL = Thistle

CV = Crown Vetch

FL = Fence Line

(++) = Engineer must be present during spray operations

NS = No Spray

Wet = Area is Seasonally Wet

PR = Prairie - Consult with R.E.

Edges = Spray mowed edge only & consult with R.E.

Heavy = Heavy Infestation

SRRA = Spoon River Rest Area

STP = Steep Hillside

(*) = For Information Only

NOTE: Ariel maps are provided as a reference to the surrounding vegetation.

NOT TO SCALE

MODEL: Default
FILE NAME: p:\m\baronm.dwt
PROJECT: 68G08\CD\DATA\CAD\Drawings\68G08-CADD.dwg

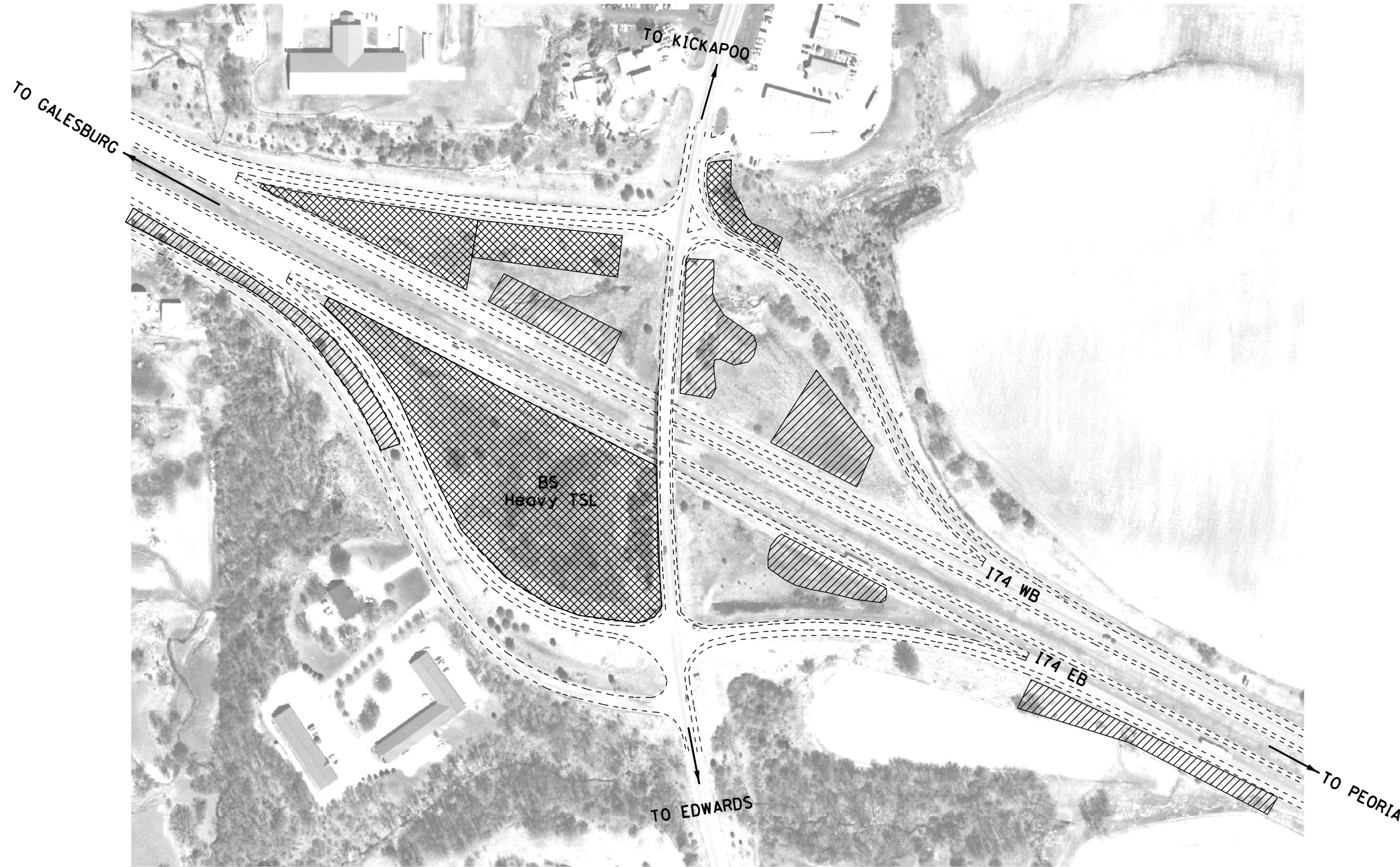
USER NAME = everst	DESIGNED -	REVISED -
	DRAWN -	REVISED -
PLOT SCALE = 100,0000' / in.	CHECKED -	REVISED -
PLOT DATE = 10/23/2020	DATE -	REVISED -

**STATE OF ILLINOIS
DEPARTMENT OF TRANSPORTATION**

**LOCATION MAP (EXIT 6)
RT 6 /RT 40 /KNOXVILLE INTERCHANGE**

SCALE: SHEET OF SHEETS STA. TO STA.

F.A. RTE.	SECTION	COUNTY	TOTAL SHEETS	SHEET NO.
VAR.	D4 WEED SPRAYING 2021	VARIOUS	21	7
			CONTRACT NO. 68G08	
ILLINOIS FED. AID PROJECT				



LEGEND



SS = Spot Spraying

NS = No Spray

BR = Brush

Wet = Area is Seasonally Wet

BS = Blanket Spraying

PR = Prairie - Consult with R.E.

SS* = May Require Hand Spray/Back Pack

Edges = Spray mowed edge only & consult with R.E.

TSL = Teasel

Heavy = Heavy Infestation

THSL = Thistle

SRRA = Spoon River Rest Area

CV = Crown Vetch

STP = Steep Hillside

FL = Fence Line

(*) = For Information Only

(++) = Engineer must be present during spray operations

NOTE: Ariel maps are provided as a reference to the surrounding vegetation.

NOT TO SCALE

MODEL: Default
 FILE NAME: p:\pub\baronm.dwg
 PROJECT: I-74 / KICKAPOO / EDWARDS INTERCHANGE
 PROJECT DATE: 10/23/2020
 PROJECT LOCATION: I-74 / KICKAPOO / EDWARDS INTERCHANGE
 PROJECT NUMBER: 68G08
 PROJECT DESCRIPTION: WEED SPRAYING 2021
 PROJECT DRAWN BY: EVERSC
 PROJECT CHECKED BY: EVERSC
 PROJECT DATE: 10/23/2020

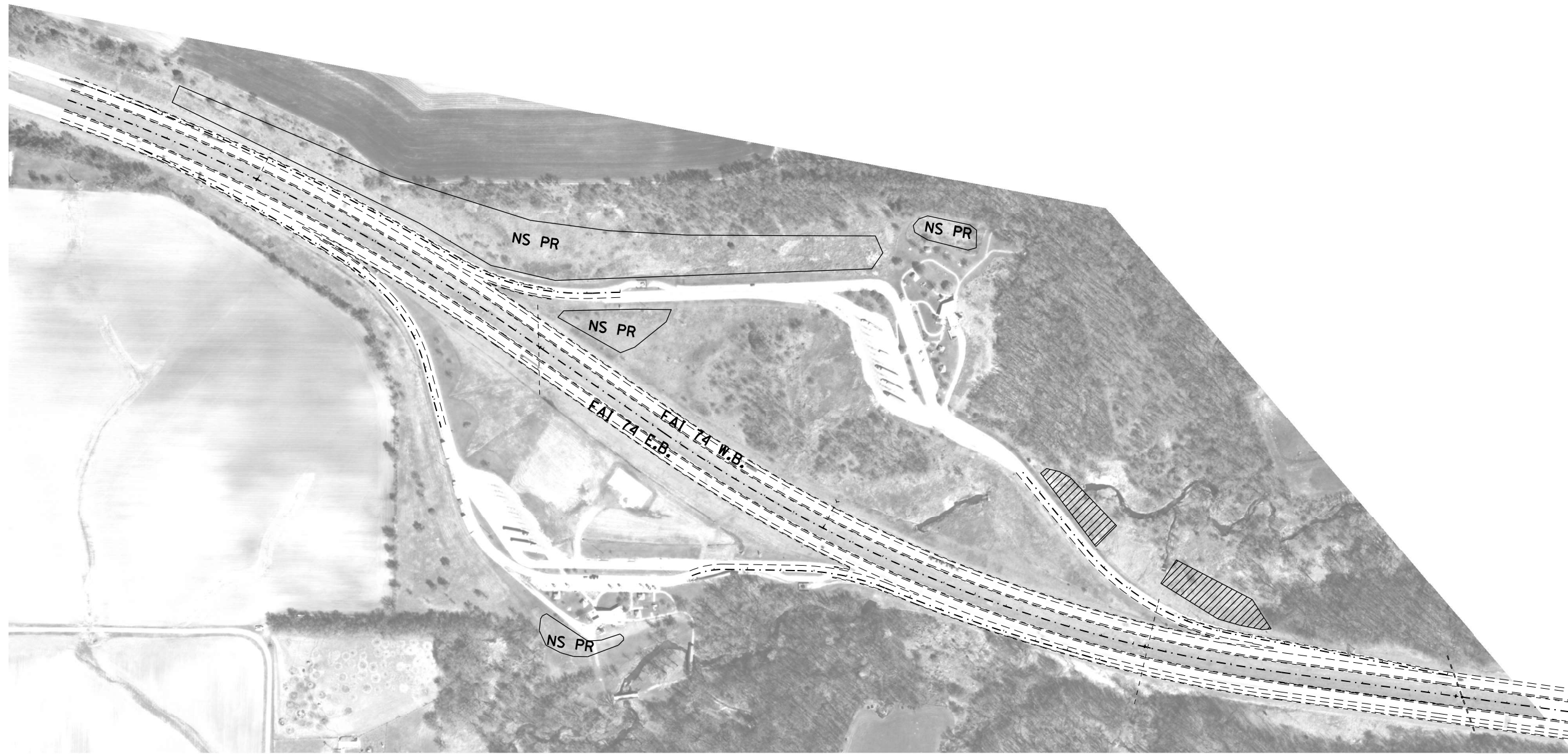
USER NAME = everesc	DESIGNED -	REVISED -
	DRAWN -	REVISED -
PLOT SCALE = 100,0000' / in.	CHECKED -	REVISED -
PLOT DATE = 10/23/2020	DATE -	REVISED -

**STATE OF ILLINOIS
DEPARTMENT OF TRANSPORTATION**

**LOCATION MAP (EXIT 82)
I-74 / KICKAPOO / EDWARDS INTERCHANGE**

SCALE: SHEET OF SHEETS STA. TO STA.

F.A. RTE.	SECTION	COUNTY	TOTAL SHEETS	SHEET NO.
VAR.	D4 WEED SPRAYING 2021	VARIOUS	21	8
			CONTRACT NO. 68G08	
		ILLINOIS	FED. AID PROJECT	



LEGEND



SS = Spot Spraying

BR = Brush



BS = Blanket Spraying

SS* = May Require Hand Spray/Back Pack

TSL = Teasel

THSL = Thistle

CV = Crown Vetch

FL = Fence Line

(++) = Engineer must be present during spray operations

NS = No Spray

Wet = Area is Seasonally Wet

PR = Prairie - Consult with R.E.

Edges = Spray mowed edge only & consult with R.E.

Heavy = Heavy Infestation

SRRA = Spoon River Rest Area

STP = Steep Hillside

(*) = For Information Only

NOTE: Ariel maps are provided as a reference to the surrounding vegetation.

NOT TO SCALE

MODEL: Default
 FILE NAME: p:\pub\baronm.dwt\illinois.gov\PIWDOT\Documents\DOT_Offices\District_4\Projects\DL_68G08\CADD\31\CAD\Drawings\68G08-CADD.dgn

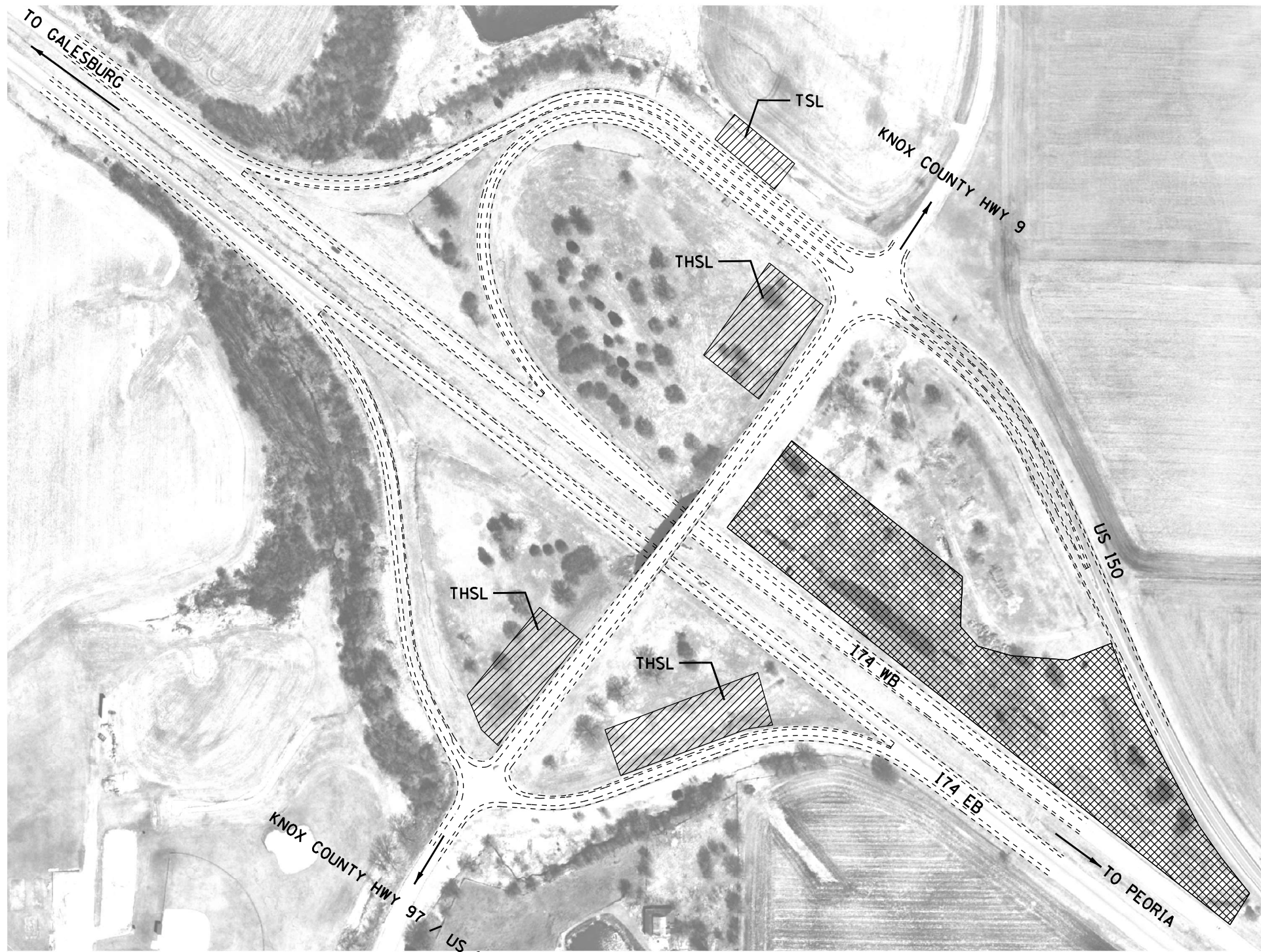
USER NAME = everscl	DESIGNED -	REVISED -
	DRAWN -	REVISED -
PLOT SCALE = 100,0000' / in.	CHECKED -	REVISED -
PLOT DATE = 10/23/2020	DATE -	REVISED -

**STATE OF ILLINOIS
DEPARTMENT OF TRANSPORTATION**

**LOCATION MAP (MM62)
I-74 SPOON RIVER REST AREA**

SCALE: SHEET OF SHEETS STA. TO STA.

F.A. RTE.	SECTION	COUNTY	TOTAL SHEETS	SHEET NO.
VAR.	D4 WEEK SPRAYING 2021	VARIOUS	21	9
			CONTRACT NO. 68G08	
ILLINOIS FED. AID PROJECT				



LEGEND

- SS = Spot Spraying
- BR = Brush
- BS = Blanket Spraying
- SS* = May Require Hand Spray/Back Pack
- TSL = Teasel
- THSL = Thistle
- CV = Crown Vetch
- FL = Fence Line
- (++) = Engineer must be present during spray operations
- NS = No Spray
- Wet = Area is Seasonally Wet
- PR = Prairie - Consult with R.E.
- Edges = Spray mowed edge only & consult with R.E.
- Heavy = Heavy Infestation
- SRRA = Spoon River Rest Area
- STP = Steep Hillside
- (*) = For Information Only

NOTE: Ariel maps are provided as a reference to the surrounding vegetation. NOT TO SCALE

MODEL: Default
 FILE NAME: p:\pub\mbarrom.dwg
 PROJECT: I-74 / CO. HWY 97 & US 150 INTERCHANGE
 OFFICE: District 4
 DATE: 10/23/2020

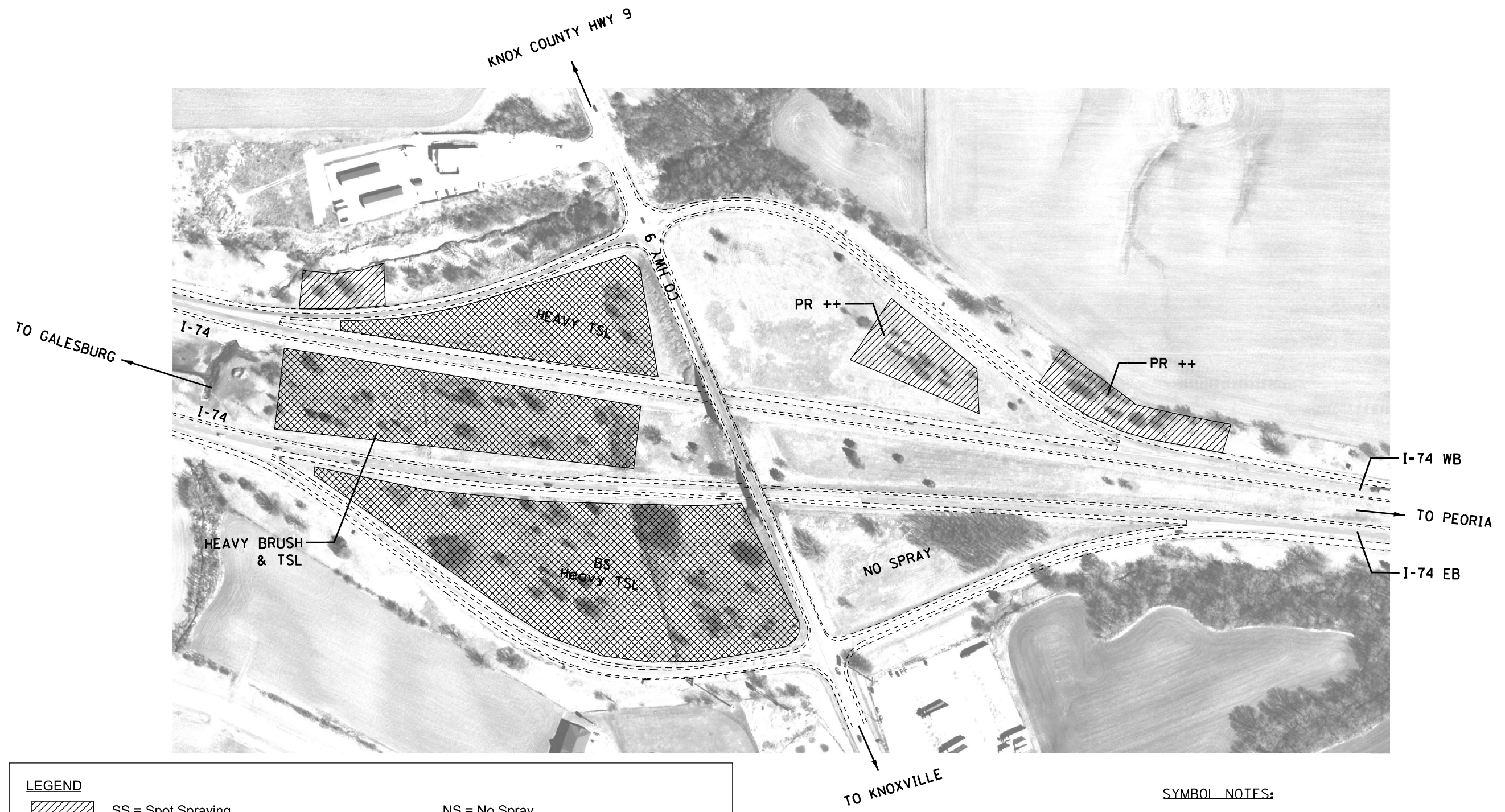
USER NAME = everscl	DESIGNED -	REVISED -
	DRAWN -	REVISED -
PLOT SCALE = 100,0000' / in.	CHECKED -	REVISED -
PLOT DATE = 10/23/2020	DATE -	REVISED -

**STATE OF ILLINOIS
DEPARTMENT OF TRANSPORTATION**

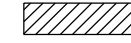

**LOCATION MAP (EXIT 54)
I-74 / CO. HWY 97 & US 150 INTERCHANGE**

SCALE: SHEET OF SHEETS STA. TO STA.

F.A. RTE.	SECTION	COUNTY	TOTAL SHEETS	SHEET NO.
VAR.	D4 WEED SPRAYING 2021	VARIOUS	21	10
ILLINOIS FED. AID PROJECT			CONTRACT NO. 68G08	



LEGEND

- | | | |
|---|---|---|
|  | SS = Spot Spraying | NS = No Spray |
|  | BR = Brush | Wet = Area is Seasonally Wet |
| | BS = Blanket Spraying | PR = Prairie - Consult with R.E. |
| | SS* = May Require Hand Spray/Back Pack | Edges = Spray mowed edge only & consult with R.E. |
| | TSL = Teasel | Heavy = Heavy Infestation |
| | THSL = Thistle | SRRA = Spoon River Rest Area |
| | CV = Crown Vetch | STP = Steep Hillside |
| | FL = Fence Line | (*) = For Information Only |
| | (++) = Engineer must be present during spray operations | |

SYMBOL NOTES:

1. INFIELDS ON NE & NW HAVE GOOD PRAIRIE, SPOT SPRAY TEASEL COLONIES AND INDIVIDUAL SPROUTS ONLY.
2. BLANKET SPRAY ONLY DESIGNATED AREAS.

NOTE: Ariel maps are provided as a reference to the surrounding vegetation. NOT TO SCALE

MODEL: Default
 FILE NAME: p:\m\baronm.dwg
 PROJECT: I-74/KNOXVILLE INTERCHANGE
 SHEET: 11 OF 21
 DATE: 10/23/2020

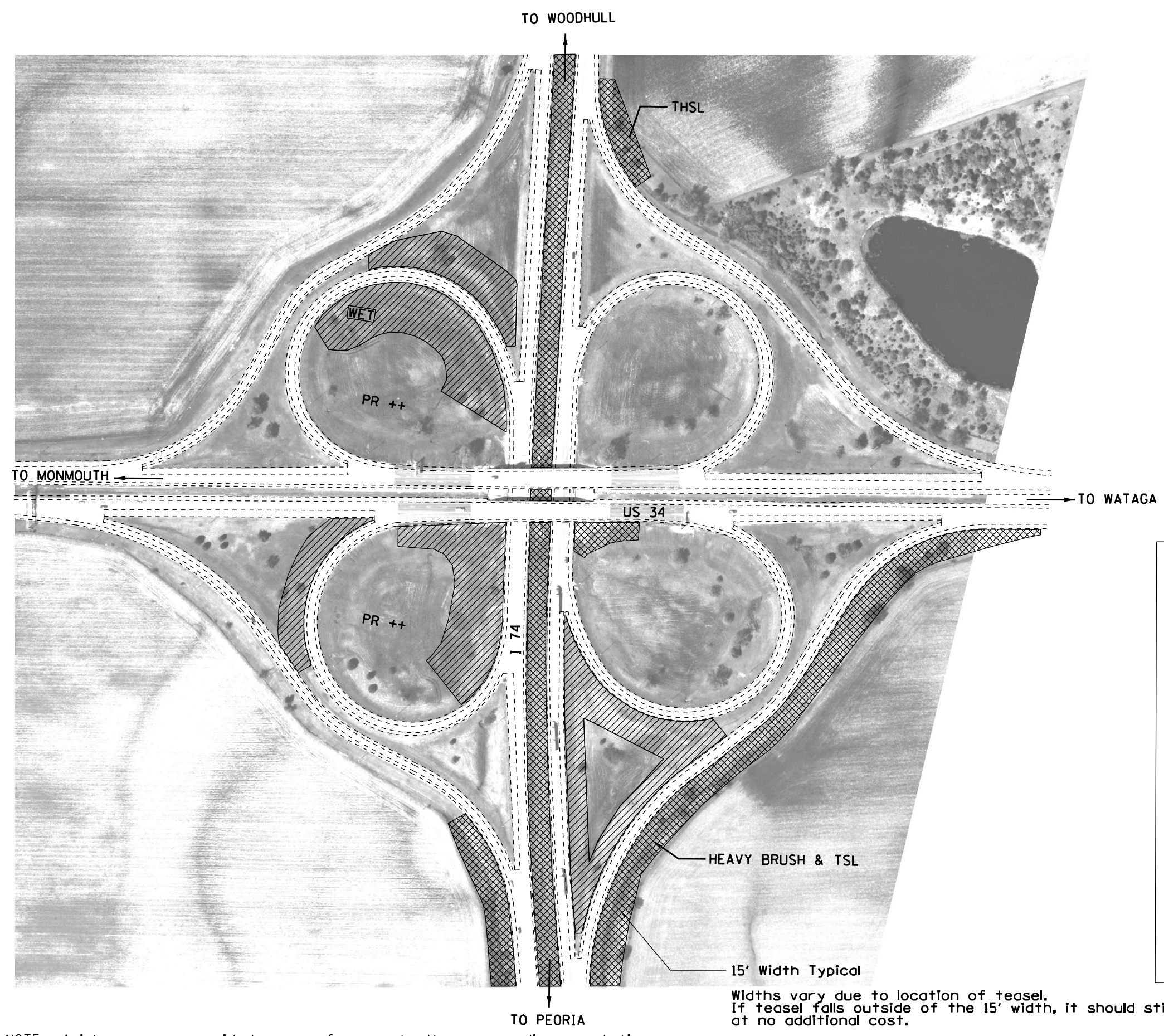
USER NAME = everst	DESIGNED -	REVISED -
PLOT SCALE = 100,000' / in.	DRAWN -	REVISED -
PLOT DATE = 10/23/2020	CHECKED -	REVISED -
	DATE -	REVISED -

**STATE OF ILLINOIS
DEPARTMENT OF TRANSPORTATION**

**LOCATION MAP (EXIT 51)
I-74 /KNOXVILLE INTERCHANGE**

SCALE: SHEET OF SHEETS STA. TO STA.

F.A. RTE.	SECTION	COUNTY	TOTAL SHEETS	SHEET NO.
VAR.	D4 WEED SPRAYING 2021	VARIOUS	21	11
ILLINOIS FED. AID PROJECT			CONTRACT NO. 68G08	



SYMBOL NOTES:
 1. NE & NW INFIELDS MAY BE WET.

LEGEND	
	SS = Spot Spraying
	BR = Brush
	BS = Blanket Spraying
	SS* = May Require Hand Spray/Back Pack
	TSL = Teasel
	THSL = Thistle
	CV = Crown Vetch
	FL = Fence Line
	(++) = Engineer must be present during spray operations
	NS = No Spray
	Wet = Area is Seasonally Wet
	PR = Prairie - Consult with R.E.
	Edges = Spray mowed edge only & consult with R.E.
	Heavy = Heavy Infestation
	SRRA = Spoon River Rest Area
	STP = Steep Hillside
	(*) = For Information Only

NOTE: Ariel maps are provided as a reference to the surrounding vegetation.

NOT TO SCALE

MODEL: Default
 FILE NAME: p:\mtd\baronm.dwg
 PROJECT: I-74/US 34 Interchange
 DATE: 10/23/2020

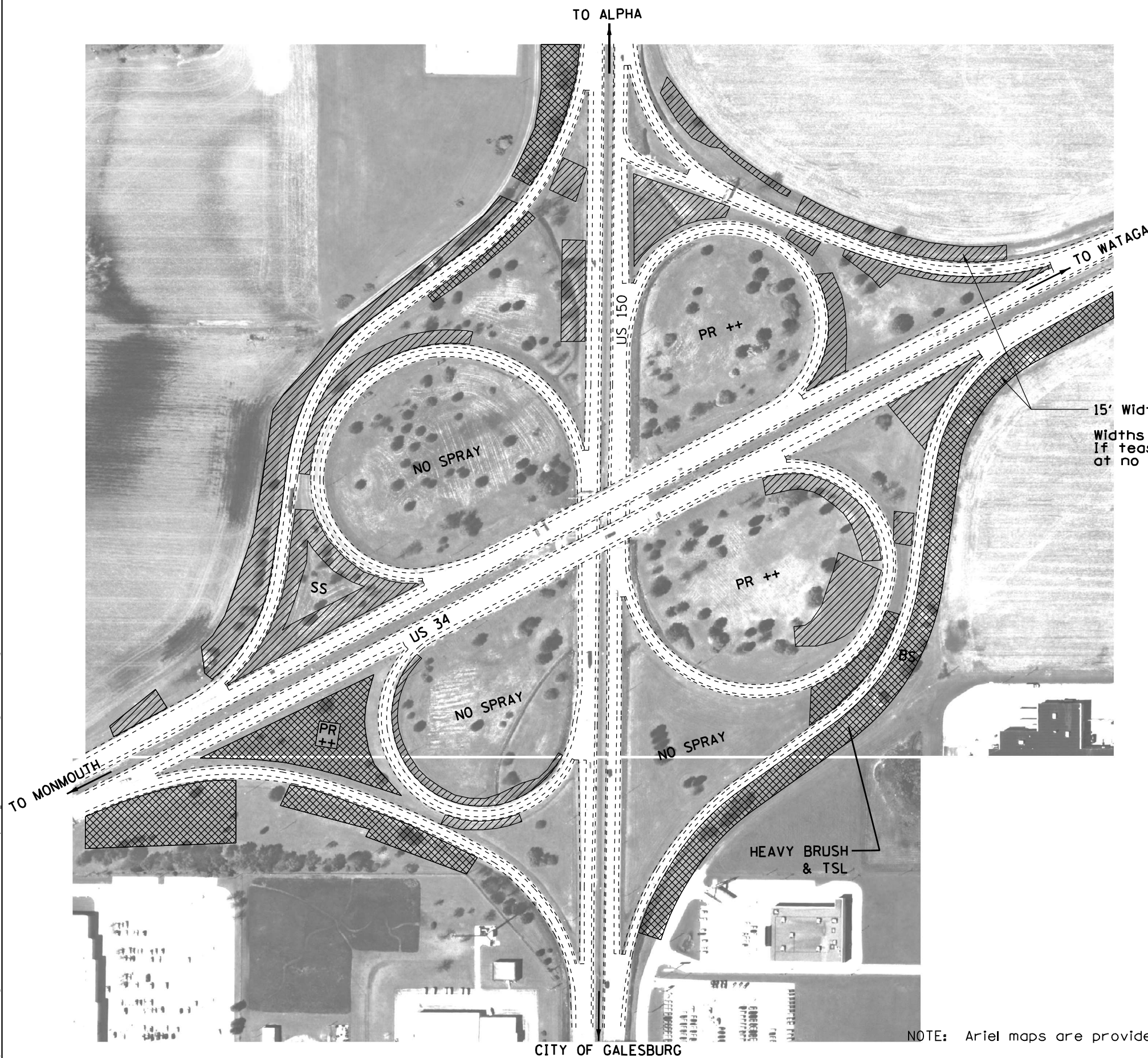
USER NAME = everscl	DESIGNED -	REVISED -
	DRAWN -	REVISED -
PLOT SCALE = 100,0000' / in.	CHECKED -	REVISED -
PLOT DATE = 10/23/2020	DATE -	REVISED -

**STATE OF ILLINOIS
 DEPARTMENT OF TRANSPORTATION**

**LOCATION MAP (EXIT 46B & 46A)
 I-74 /US 34 INTERCHANGE**

SCALE:	SHEET	OF	SHEETS	STA.	TO	STA.
--------	-------	----	--------	------	----	------

F.A. RTE.	SECTION	COUNTY	TOTAL SHEETS	SHEET NO.
VAR.	D4 WEED SPRAYING 2021	VARIOUS	21	12
			CONTRACT NO. 68G08	
		ILLINOIS	FED. AID PROJECT	



LEGEND

- SS = Spot Spraying
- BR = Brush
- BS = Blanket Spraying
- SS* = May Require Hand Spray/Back Pack
- TSL = Teasel
- THSL = Thistle
- CV = Crown Vetch
- FL = Fence Line
- (++) = Engineer must be present during spray operations
- NS = No Spray
- Wet = Area is Seasonally Wet
- PR = Prairie - Consult with R.E.
- Edges = Spray mowed edge only & consult with R.E.
- Heavy = Heavy Infestation
- SRRA = Spoon River Rest Area
- STP = Steep Hillside
- (*) = For Information Only

NOTE: Ariel maps are provided as a reference to the surrounding vegetation. NOT TO SCALE

MODEL: Default
 FILE NAME: p:\m\baronm\baronm.dwg
 PROJECT: 68G08\CD\Drawings\DOT - Office\Drawings\68G08\CD\Drawings\68G08-CADD.dwg

USER NAME = everscl	DESIGNED -	REVISED -
	DRAWN -	REVISED -
PLOT SCALE = 100,0000' / in.	CHECKED -	REVISED -
PLOT DATE = 10/23/2020	DATE -	REVISED -

**STATE OF ILLINOIS
 DEPARTMENT OF TRANSPORTATION**

**LOCATION MAP (HENDERSON STREET EXIT)
 US 34 /US 150 INTERCHANGE**

SCALE: SHEET OF SHEETS STA. TO STA.

F.A. RTE.	SECTION	COUNTY	TOTAL SHEETS	SHEET NO.
VAR.	D4 WEED SPRAYING 2021	VARIOUS	21	13
			CONTRACT NO. 68G08	
		ILLINOIS	FED. AID PROJECT	

ROUTE	TEAM SECTION	DIRECTION	LOCATION	COUNTY	APPROX. MILES	APPROX. ACRES		APPROX. OUNCES		NOTES
						ON-RD. *	OFF-RD.	ON-RD. *	OFF-RD.	
I-155	441	SB Infields/Ramps	<i>DO NOT BLANKET SPRAY</i>	MM 22 Exit(Townline Rd NW & SW Infields & Ramps)	TAZEWELL		15		90	SS, PR, Heavy TSL
I-155	441	Southbound		MM 20-19 SB	TAZEWELL	1	3		18	STP, SS
I-155	441	Southbound		MM 19.5 SB (Mackinaw River)	TAZEWELL		10		60	BR, SS
I-155	441	Infields/Ramps		Hopedale Exit 19 (NW & SW Infields & Ramps)	TAZEWELL		15		90	SS, PR
I-155	441	Southbound		MM 18.5 SB	TAZEWELL		0.5		3	SS
I-155	441	Southbound		MM 17	TAZEWELL		1		6	STP, PR, SS
I-155	441	Southbound		MM 17.2 SB	TAZEWELL		2		12	SS
I-155	441	Infields/Ramps		MM 15 Exit (Delavan NW & SW Infields & Ramps)	TAZEWELL		10		60	SS
I-155	441	Infields		At Exit 10 (US HWY 136 ALL 4 infields)	TAZEWELL		9		54	SS
I-155	441	Northbound		MM 10.1 NB Ramp sides	TAZEWELL		3		18	SS, FL
I-155	441	NB/ Infields		Exit 15 (Delavan SE & NE Infields/Ramps)	TAZEWELL		5		30	
I-155	441	Northbound		MM 18-19 NB (Edges and Fence)	TAZEWELL	1	10		60	SS, FL
I-155	441	NB/ Infields		Hopedale Exit 19 (SE/NE Infields/ramps)	TAZEWELL		20		120	PR, SS
I-155	441	Northbound		MM 19.1-20 NB (Fenceline)	TAZEWELL	1	15		90	SS
I-155	441	Northbound		MM 20-22 NB	TAZEWELL	2	1		6	SS, FL
I-155	441	NB/ Infields		Exit 22 Townline Rd (SE/NE Infields/Ramps)	TAZEWELL		15		90	Heavy TSL
I-155	441	Northbound		MM 22-25 NB	TAZEWELL	3				NS (Prairie)
I-155	441	Infields/Ramp		Exit 25 (SE/NE Infields/Ramps to IL 9)	TAZEWELL		1		6	SS
SUB-TOTAL									813	

Symbol Notes

Δ No spray MM 22-29 (Median)

LEGEND



SS = Spot Spraying

BR = Brush



BS = Blanket Spraying

SS* = May Require Hand Spray/Back Pack

TSL = Teasel

THSL = Thistle

CV = Crown Vetch

FL = Fence Line

(++) = Engineer must be present during spray operations

NS = No Spray

Wet = Area is Seasonally Wet

PR = Prairie - Consult with R.E.

Edges = Spray mowed edge only & consult with R.E.

Heavy = Heavy Infestation

SRRA = Spoon River Rest Area

STP = Steep Hillside

(*) = For Information Only

MODEL: Default
FILE NAME: p:\pub\amr\amr\dot\Documents\DOT_Offices\District_4\Projects\IDL_68G08\CADD\21\CD\Drawings\68G08-CADD.dgn

USER NAME = everscl	DESIGNED -	REVISED -
	DRAWN -	REVISED -
PLOT SCALE = 100,0000' / in.	CHECKED -	REVISED -
PLOT DATE = 10/23/2020	DATE -	REVISED -

**STATE OF ILLINOIS
DEPARTMENT OF TRANSPORTATION**

SCHEDULE OF QUANTITIES

SCALE: SHEET OF SHEETS STA. TO STA.


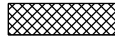
F.A. RTE.	SECTION	COUNTY	TOTAL SHEETS	SHEET NO.
VAR.	D4 WEED SPRAYING 2021	VARIOUS	21	15
			CONTRACT NO. 68G08	
ILLINOIS FED. AID PROJECT				

ROUTE	TEAM SECTION	DIRECTION	LOCATION	COUNTY	APPROX. MILES	APPROX. ACRES		APPROX. OUNCES		NOTES
						ON-RD. *	OFF-RD.	ON-RD. *	OFF-RD.	
I-155	441	NB/ Infields	I-155	Exit 28 Broadway Rd (SE/NE Infields/Ramps)	TAZEWELL		5		30	SS
I-155	441	Infields/Exit	I-155	Exit 29 (Main St. Exit Ramp & Infield)	TAZEWELL		10		60	STP, BS
I-155	441	Infield/Ramp	I-155	MM 30 Entrance Ramp (Queenwood Infield & Ramp)	TAZEWELL		2		12	SS
I-155	441	Northbound	I-155	MM 30.1-30.9 NB	TAZEWELL	1	10		60	BS
I-155	441	N.E. Infields	I-155	BIRCH WOOD EXIT 31 NE INFIELDS & RAMP	TAZEWELL	1	10		60	BS, SS
VFW Rd	441	East and West B	Veterans Drive	IL 29 to 14th Street	TAZEWELL	2	15		90	BS, THSL & TSL
I-74	441	EastBound	I-74	MM 94 (Underpass) East Peoria (Head down river on ramp to get to Camp St.)	TAZEWELL	Underpasses to Cedar St.		2	12	SS, THSL
I-74	441	EastBound	I-74	MM 94/At Exit 94 (Ramp to Washington St)	TAZEWELL		10		60	SS
I-74	441	EastBound	I-74	MM Exit 94/Entrance ramp to I-74 (Camp St. infield & EB infield)	TAZEWELL	Behind Jersey Walls		3	18	SS
I-74	441	EastBound	I-74	MM 95-96***	TAZEWELL		20		120	BS
I-74	441	Ramp	I-74	IL 8 Exit ex 95/96	TAZEWELL		5		30	SS
I-74	441	EastBound	I-74	MM 96 Exit 96 (Infield)	TAZEWELL	Exit Infield	8		48	Infield Exit
I-74	441	EastBound	I-74	MM 96-96.5	TAZEWELL	0.5	1		6	EDGES, BR
I-74	441	East Bound	I-74	MM 98-97 EB	TAZEWELL	1	5		30	SS
I-74	441	EastBound	I-74	MM 99-100 (Infields) 474 interchange	TAZEWELL		40		240	SS
I-74	441	EastBound	I-74	MM 100-101 North Side N of Ramps	TAZEWELL		20		120	Wet, BS
I-74	441	EastBound	I-74	MM 101 (I-155)	TAZEWELL		1		6	Edges
I-74	441	infields/ramps	I-74	MM 102 Morton (SouthSide)	TAZEWELL	Exit Infield	10		60	Ramps, THSL, BS
I-74	441	infields/ramps	I-74	MM 103-104 (Exit Infield)	TAZEWELL		1		6	SS
I-74	441	Median	I-74	MM 104-106 (Median)	TAZEWELL	Median	1		6	SS
I-74	441	EB/Infields & Ramps	I-74	MM Exit 112 (IL 117)	WOODFORD	Exit Infield	8		48	Wet, Ramp
I-74	441	infields/ramps	I-74	MM 120 (Ramps/Infield)	MCLEAN		20		120	STP
I-74	441	WB Infields & Ramps	I-74	MM Exit 112 (IL 117)	TAZEWELL		5		30	Heavy TSL exit ramp
I-474	441	Infields	I-474	MM 15 (Infields)	TAZEWELL	Infields	8		48	Wet, STP
I-474	441	Westbound	I-474	MM 12 (NR Overpass)	TAZEWELL		4		24	SS
I-474	441	Westbound	I-474	MM 9.5 NS	TAZEWELL		2		12	STP
I-474	441	Westbound	I-474	Exit 9(To IL 29, Ramps, edges of infield)	TAZEWELL		5		30	STP, Wet
SUB-TOTAL									1386	

Symbol Notes

** Head down river on ramp to get to Camp St.

LEGEND

- | | | |
|---|---|---|
|  | SS = Spot Spraying | NS = No Spray |
|  | BR = Brush | Wet = Area is Seasonally Wet |
| | BS = Blanket Spraying | PR = Prairie - Consult with R.E. |
| | SS* = May Require Hand Spray/Back Pack | Edges = Spray mowed edge only & consult with R.E. |
| | TSL = Teasel | Heavy = Heavy Infestation |
| | THSL = Thistle | SRRA = Spoon River Rest Area |
| | CV = Crown Vetch | STP = Steep Hillside |
| | FL = Fence Line | (*) = For Information Only |
| | (++) = Engineer must be present during spray operations | |

MODEL: Default
FILE NAME: p:\pub\mbaronm.dwg
PROJECT: ILLINOIS DOT Documents\DOT Office\Drawings\68G08\CADD\68G08-CADD.dwg

USER NAME = everscl	DESIGNED -	REVISED -
	DRAWN -	REVISED -
PLOT SCALE = 100,0000' / in.	CHECKED -	REVISED -
PLOT DATE = 10/23/2020	DATE -	REVISED -

**STATE OF ILLINOIS
DEPARTMENT OF TRANSPORTATION**

SCHEDULE OF QUANTITIES

SCALE: SHEET OF SHEETS STA. TO STA.

F.A. RTE.	SECTION	COUNTY	TOTAL SHEETS	SHEET NO.
VAR.	D4 WEED SPRAYING 2021	VARIOUS	21	16
			CONTRACT NO. 68G08	
ILLINOIS FED. AID PROJECT				

ROUTE	TEAM SECTION	DIRECTION	LOCATION	COUNTY	APPROX. MILES	APPROX. ACRES		APPROX. OUNCES		NOTES
						ON-RD. *	OFF-RD.	ON-RD. *	OFF-RD.	
US 150	432		US 150	PEORIA	6		20		120	SS
US 24	432		US 24	PEORIA	17		100		600	BR, SS
IL 9	432		IL 9	PEORIA	5		20		120	SS; Edges
I-74	441	East B. South hill	I-74	Peoria			10		60	THSL, BS
I-74	432	West Bound	I-74	PEORIA						NS
I-74	432	West Bound	I-74	PEORIA	0.5		5		30	BR, STP
I-74	432	West Bound	I-74	PEORIA			1		6	SS, NS Bushes
I-74	432	West Bound	I-74	PEORIA			20		120	SS, CV, THSL, STP
I-74	432	West Bound	I-74	PEORIA			10		60	BR, SS* (See Detail)
I-74	432	West Bound	I-74	PEORIA			1		6	SS, Heavy
I-74	432	West Bound	I-74	PEORIA			10		60	STP
I-74	432	West Bound	I-74	PEORIA			10		60	
I-74	432	West Bound	I-74	PEORIA			20		120	PR, STP
I-74	432	West Bound	I-74	PEORIA			1		6	SS
I-74	432	West Bound	I-74	PEORIA	Perennial bed		No spray under high tension power line ++			NS++ (Prairie & Perennials)
I-74	432	West Bound	I-74	PEORIA	MM 88-84 WB	4			72	Edges
I-74	432	West Bound	I-74	PEORIA	Spray brush on Gilles Rd.&Heinz Ln overpasses				60	
I-74	432	West Bound	I-74	PEORIA	MM 87-86 (Median)				60	Wet, Median
I-74	432	West Bound	I-74	PEORIA	MM 82-80 EB	2			30	
I-74	432	West Bound	I-74	PEORIA	Exit 82 (Kickapoo/Edwards) (SEE DETAIL)				15	PR, SS, Edges ++
I-74	432	West Bound	I-74	PEORIA	MM 76-82 (Median)	8			20	SS, Median Edges
I-74	432	West Bound	I-74	PEORIA	MM 75-82	7			10	BR, SS, FL
I-74	432	West Bound	I-74	PEORIA	Exit 75				10	BS,N/W quad
I-74	432	West Bound	I-74	PEORIA	MM 71-75 EB	4			10	SS, Edges
I-74	432	West Bound	I-74	PEORIA	MM 71-68 (Median Shoulder)	10			20	SS
I-74	432	West Bound	I-74	PEORIA	EB MM 74 WB (Canada THSTL)				3	Hillside (by sign)
I-74	432	West Bound	I-74	PEORIA	EB Exit 71 (Ramps/Edges)				8	SS Ramps/Edges, PR infields ++
SUB-TOTAL									2166	

Symbol Notes

***** Large amount of TSL and brush in NE Quadrant. Will require hand spraying

LEGEND



SS = Spot Spraying

BR = Brush



BS = Blanket Spraying

SS* = May Require Hand Spray/Back Pack

TSL = Teasel

THSL = Thistle

CV = Crown Vetch

FL = Fence Line

(++) = Engineer must be present during spray operations

NS = No Spray

Wet = Area is Seasonally Wet

PR = Prairie - Consult with R.E.

Edges = Spray mowed edge only & consult with R.E.

Heavy = Heavy Infestation

SRRA = Spoon River Rest Area

STP = Steep Hillside

(*) = For Information Only

MODEL: Default
 FILE NAME: p:\m\baronm.dwg
 PROJECT: 68G08-CADD-08-CADD.dwg
 USER: everst
 DATE: 10/23/2020

USER NAME = everst	DESIGNED -	REVISED -
	DRAWN -	REVISED -
PLOT SCALE = 100,0000' / in.	CHECKED -	REVISED -
PLOT DATE = 10/23/2020	DATE -	REVISED -

**STATE OF ILLINOIS
DEPARTMENT OF TRANSPORTATION**

SCHEDULE OF QUANTITIES

SCALE: SHEET OF SHEETS STA. TO STA.

F.A. RTE.	SECTION	COUNTY	TOTAL SHEETS	SHEET NO.
VAR.	D4 WEED SPRAYING 2021	VARIOUS	21	18
ILLINOIS FED. AID PROJECT			CONTRACT NO. 68G08	

HERBICIDE DOSAGE CHART

WATER	MILESTONE VM*	DRIFT CONTROL**	NON-IONIC SURFACTANT***	ACRES OF R.O.W.
(GALLONS)	(OZ.)	(OZ.)	(PINTS)	ACRE
40	6	3.2	0.8	1
50	7.5	4	1	1.25
100	15	8	2	2.5
200	30	16	4	5
300	45	24	6	7.5
400	60	32	8	10
500	75	40	10	12.5
600	90	48	12	15
700	105	56	14	17.5
800	120	64	16	20
900	135	72	18	22.5
1000	150	80	20	25
1100	165	88	22	27.5
1200	180	96	24	30
1300	195	104	26	32.5
1400	210	112	28	35
1500	225	120	30	37.5

- * BASED ON 6 OUNCES OF MILESTONE VM FOR EACH 1.0 ACRE
- ** BASED ON 8 OUNCES OF DRIFT CONTROL AGENT PER 100 GALLONS
- *** BASED ON 2 PINTS OF NON-IONIC SURFACTANT FOR EACH 100 GALLONS OF WATER

Notes:

1. Suggested rate of water per acre. Refer to product label for verification.
2. Spraying machine shall be calibrated to deliver 6 oz of herbicide per acre 72 hr prior to job start.
3. Spot checks will be performed to check for herbicide delivery accuracy.

MODEL: Default
 FILE NAME: p:\pub\mroom.dwt\illinois.gov\PIWDOT\Documents\DOT_Offices\Distric_4\Projects\CDL_68G08\CADD\31A\CAD\Drawings\68G08-CADD.dgn

USER NAME = everscl	DESIGNED -	REVISED -
	DRAWN -	REVISED -
PLOT SCALE = 100,0000' / in.	CHECKED -	REVISED -
PLOT DATE = 10/23/2020	DATE -	REVISED -

**STATE OF ILLINOIS
DEPARTMENT OF TRANSPORTATION**

HERBICIDE DOSAGE CHART

SCALE: SHEET OF SHEETS STA. TO STA.

F.A. RTE.	SECTION	COUNTY	TOTAL SHEETS	SHEET NO.
VAR.	D4 WEED SPRAYING 2021	VARIOUS	21	21
			CONTRACT NO. 68G08	
		ILLINOIS	FED. AID PROJECT	