

STATE OF ILLINOIS
DEPARTMENT OF TRANSPORTATION

F.A. RTE.	SECTION	COUNTY	TOTAL SHEETS	SHEET NO.
VAR.	D5 LIGHTING REPAIR 2021-1	VARIOUS	3	1
		ILLINOIS	CONTRACT NO. 70F31	

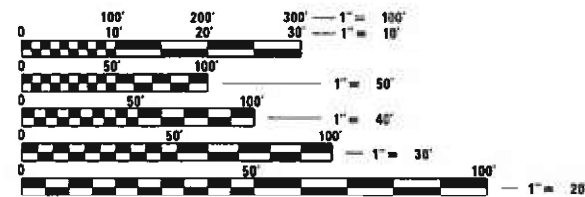
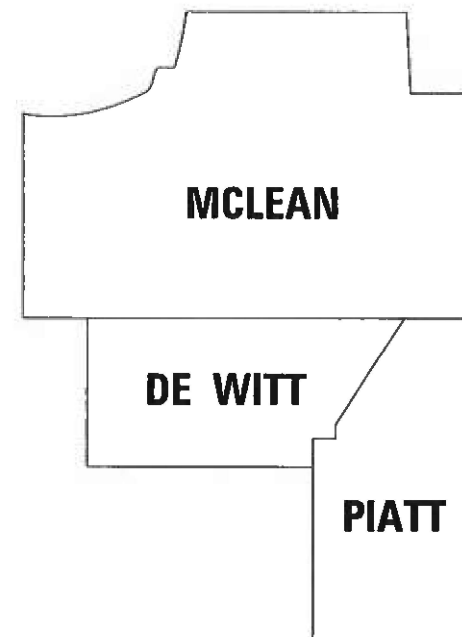
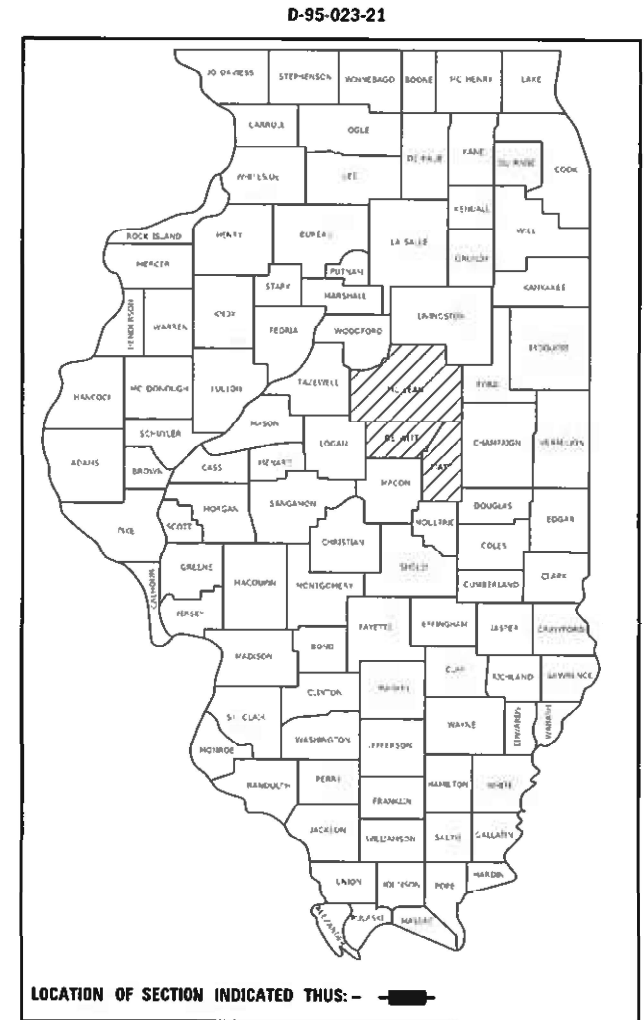
FOR INDEX OF SHEETS, SEE SHEET NO. 2.
FOR SUMMARY OF QUANTITIES, SEE SHEET NO. 3.

PROPOSED HIGHWAY PLANS

VARIOUS ROUTES
SECTION D5 LIGHTING REPAIRS 2021-1

WEST FIELD AREA ON-CALL LIGHTING REPAIRS
VARIOUS COUNTIES

C-95-041-21



FULL SIZE PLANS HAVE BEEN PREPARED USING STANDARD ENGINEERING SCALES. REDUCED SIZED PLANS WILL NOT CONFORM TO STANDARD SCALES. IN MAKING MEASUREMENTS ON REDUCED PLANS, THE ABOVE SCALES MAY BE USED.

J.U.L.I.E.
JOINT UTILITY LOCATION INFORMATION FOR EXCAVATION
1-800-892-0123 TOWNSHIPS:
OR 811 VARIOUS

PROJECT ENGINEER JASON W. STULTS
SQUAD LEADER RYAN T. CARROLL
DESIGNER TYLER J. PIERSON
PHONE NUMBER (217) 465-4181
CONTRACT NO. 70F31

STATE OF ILLINOIS
DEPARTMENT OF TRANSPORTATION

SUBMITTED 3-01-2021
Kennel A. Harriott
REGIONAL ENGINEER

May 7, 2021 [Signature]
ENGINEER OF DESIGN AND ENVIRONMENT

May 7, 2021 [Signature]
DIRECTOR OF HIGHWAYS PROJECT IMPLEMENTATION

PRINTED BY THE AUTHORITY
OF THE STATE OF ILLINOIS

INDEX OF SHEETS

<u>SHEET NO.</u>	<u>DESCRIPTION</u>
1	COVER SHEET
2	INDEX OF SHEETS
2	HIGHWAY STANDARDS
2	GENERAL NOTES
2	COMMITMENTS
3	SUMMARY OF QUANTITIES

HIGHWAY STANDARDS

<u>STANDARD NUMBER</u>	<u>NAME OF STANDARD</u>
000001-08	STANDARD SYMBOL, ABBREVIATIONS AND PATTERNS
001006	DECIMAL OF AN INCH AND OF A FOOT
701001-02	OFF-ROAD OPERATIONS, 2L, 2W, MORE THAN 15' (4.5 M) AWAY
701006-05	OFF-ROAD OPERATIONS, 2L, 2W, 15' (4.5 M) TO 24" (600 MM) FROM PAVEMENT EDGE
701101-05	OFF-ROAD OPERATIONS, MULTILANE, 15' (4.5 M) TO 24" (600 MM) FROM PAVEMENT EDGE
701106-02	OFF-ROAD OPERATIONS, MULTILANE, MORE THAN 15' (4.5 M) AWAY
701201-05	LANE CLOSURE, 2L, 2W, DAY ONLY, FOR SPEEDS ≥ 45 MPH
701206-05	LANE CLOSURE, 2L, 2W, NIGHT ONLY, FOR SPEEDS ≥ 45 MPH
701301-04	LANE CLOSURE, 2L, 2W, SHORT TIME OPERATIONS
701306-04	LANE CLOSURE, 2L, 2W, SLOW MOVING OPERATIONS DAY ONLY ≥ 45 MPH
701400-10	APPROACH TO LANE CLOSURE, FREEWAY/EXPRESSWAY
701401-12	LANE CLOSURE, FREEWAY/EXPRESSWAY
701406-12	LANE CLOSURE, FREEWAY/EXPRESSWAY, DAY OPERATIONS ONLY
701411-09	LANE CLOSURE, MULTILANE, AT ENTRANCE OR EXIT RAMP, FOR SPEEDS ≥ 45 MPH
701421-08	LANE CLOSURE, MULTILANE, DAY OPERATIONS ONLY, FOR SPEEDS ≥ 45 MPH TO 55 MPH
701422-10	LANE CLOSURE, MULTILANE, FOR SPEEDS ≥ 45 MPH TO 55 MPH
701426-09	LANE CLOSURE, MULTILANE, INTERMITTENT OR MOVING OPERATION, FOR SPEEDS ≥ 45 MPH
701427-05	LANE CLOSURE, MULTILANE, INTERMITTENT OR MOVING OPERATION, FOR SPEEDS ≤ 40 MPH
701428-01	TRAFFIC CONTROL SET-UP AND REMOVAL FREEWAY/EXPRESSWAY
701456-05	PARTIAL EXIT RAMP CLOSURE FREEWAY/EXPRESSWAY
701501-06	URBAN LANE CLOSURE, 2L, 2W, UNDIVIDED
701502-09	URBAN LANE CLOSURE, 2L, 2W, WITH BIDIRECTIONAL LEFT TURN LANE
701601-09	URBAN LANE CLOSURE, MULTILANE, 1W OR 2W WITH NONTRAVERSABLE MEDIAN
701602-10	URBAN LANE CLOSURE, MULTILANE, 2W WITH BIDIRECTIONAL LEFT TURN LANE
701606-10	URBAN LANE CLOSURE, MULTILANE, 2W WITH MOUNTABLE MEDIAN
701701-10	URBAN LANE CLOSURE, MULTILANE INTERSECTION
701901-08	TRAFFIC CONTROL DEVICES

GENERAL NOTES

G.N. - 100A
ELECTRONIC FILES AND/OR ELECTRONIC SURVEY INFORMATION INCLUDING CADD FILES WILL NOT BE AVAILABLE TO THE CONTRACTOR.

COMMITMENTS

NO COMMITMENTS

**STATE OF ILLINOIS
DEPARTMENT OF TRANSPORTATION**

**INDEX OF SHEETS, HIGHWAY STANDARDS,
GENERAL NOTES, & COMMITMENTS**

F.A. RTE.	SECTION	COUNTY	TOTAL SHEETS	SHEET NO.
VAR.	*	VARIOUS	3	2
*DS LIGHTING REPAIRS 2021-1			CONTRACT NO. 70F31	
ILLINOIS FED. AID PROJECT				

SCALE: SHEET 1 OF 1 SHEETS STA. TO STA.

SUMMARY OF QUANTITIES

LOCATION OF WORK:

VARIOUS ROUTES	VARIOUS ROUTES	VARIOUS ROUTES
VARIOUS COUNTIES	VARIOUS COUNTIES	VARIOUS COUNTIES

CONSTRUCTION TYPE CODE:

0021 100% MCHD	0021 100% STATE Contract Maint	0021 100% STATE ITS
-------------------	--------------------------------------	---------------------------

CODE NO	ITEM	UNIT	TOTAL			
X0327495	JOURNEYMAN ELECTRICIAN	HOUR	2,400.0	545.0	1,635.0	220.0
X0327497	PICK-UP TRUCK	HOUR	1,630.0	380.0	1,100.0	150.0
X0327498	BUCKET TRUCK (LENGTH LESS THAN 35 FEET)	HOUR	800.0	180.0	545.0	75.0
X0327499	BUCKET TRUCK (LENGTH 35 TO 65 FEET)	HOUR	925.0	210.0	630.0	85.0
X0327500	ARROWBOARD (TRAILER MOUNTED)	HOUR	600.0	135.0	410.0	55.0
X0327501	ATTENUATOR, CRASH (TRUCK MOUNTED)	HOUR	600.0	135.0	410.0	55.0
X1400365	ELECTRICIAN HELPER	HOUR	500.0	100.0	200.0	200.0

MODEL: I:\MODEL\MHFE
 FILE NAME: P:\pub\mcom\m.dwt\illinois.gov\PWIDOT\Documents\DOT_Offices\District 5\Projects\0570F31\CAD\DATA\CAD\Faces\0570F31.rpt-S00.dgn

USER NAME = P\ersonTJ	DESIGNED -	REVISED -
	DRAWN -	REVISED -
PLOT SCALE = 40,0000 * / in.	CHECKED -	REVISED -
PLOT DATE = 3/2/2021	DATE -	REVISED -

**STATE OF ILLINOIS
DEPARTMENT OF TRANSPORTATION**

SUMMARY OF QUANTITIES

SCALE: SHEET 1 OF 1 SHEETS STA. TO STA.

F.A. RTE.	SECTION	COUNTY	TOTAL SHEETS	SHEET NO.
VAR.	*	VARIOUS	3	3
*D5 LIGHTING REPAIRS 2021-1			CONTRACT NO. 70F31	
ILLINOIS FED. AID PROJECT				