

STATE OF ILLINOIS  
DEPARTMENT OF TRANSPORTATION

F.A.P. RTE.	SECTION	COUNTY	TOTAL SHEETS	SHEET NO.
328	D7 PATCHING 2021-4	EFFINGHAM	11	1
		ILLINOIS	CONTRACT NO. 74A38	

FOR INDEX OF SHEETS, SEE SHEET NO. 2

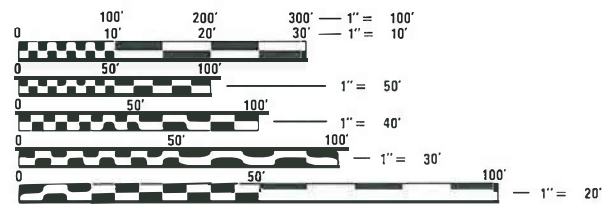
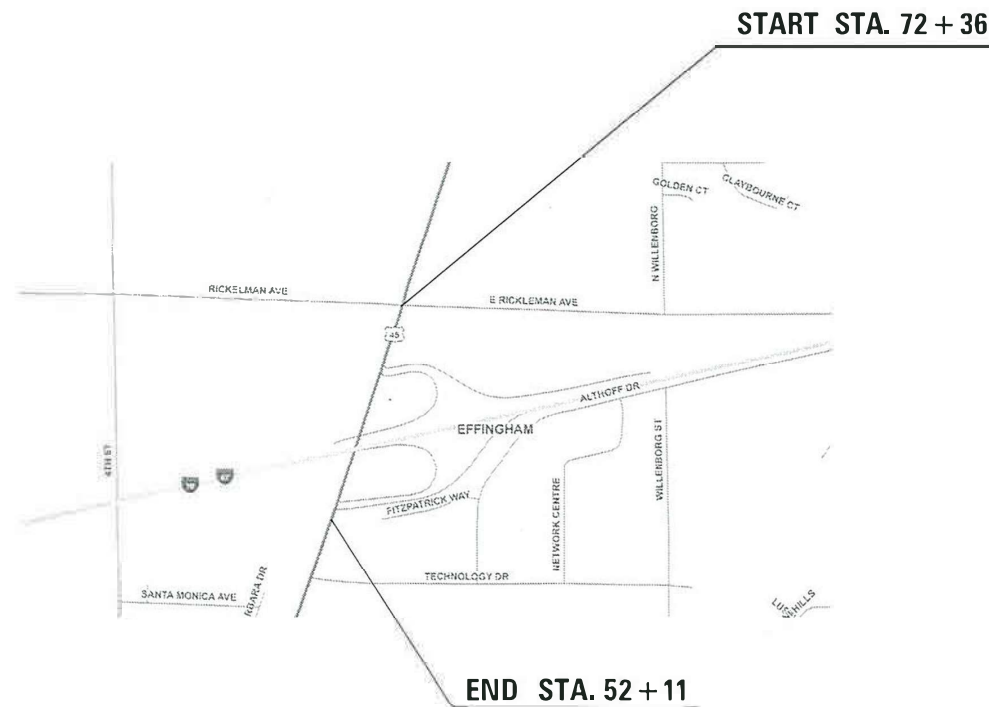
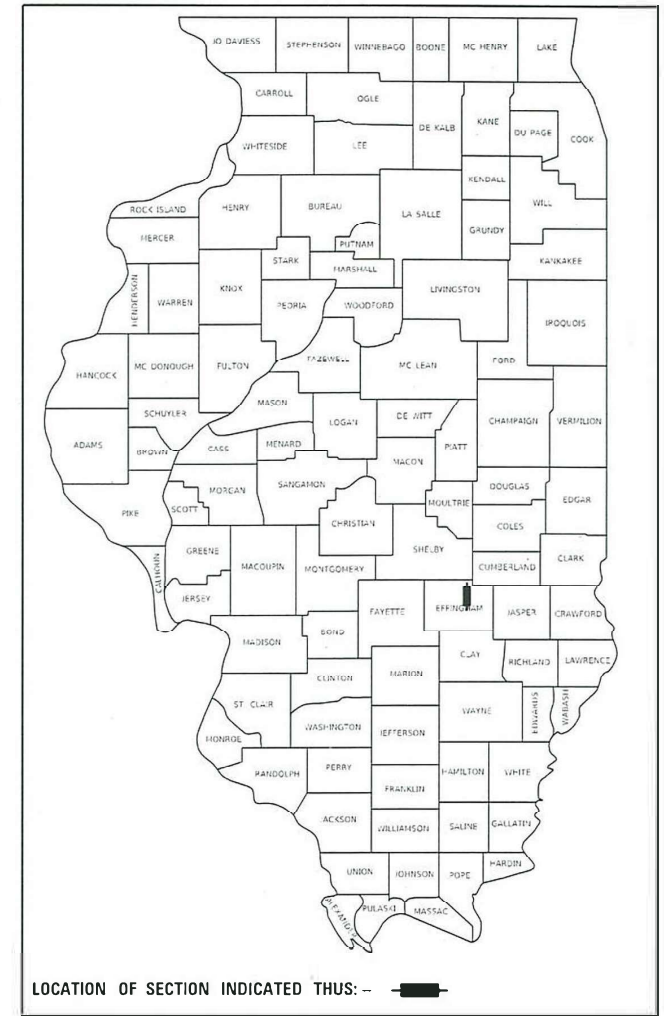
ADT (2021) = 9,000

# PROPOSED HIGHWAY PLANS

FAP ROUTE 328, FAU ROUTE 8379 (US 45)  
SECTION D7 PATCHING 2021-4  
PAVEMENT PATCHING  
EFFINGHAM COUNTY

C-97-122-21

D-97-069-21



FULL SIZE PLANS HAVE BEEN PREPARED USING STANDARD ENGINEERING SCALES. REDUCED SIZED PLANS WILL NOT CONFORM TO STANDARD SCALES. IN MAKING MEASUREMENTS ON REDUCED PLANS, THE ABOVE SCALES MAY BE USED.

J.U.L.I.E.  
JOINT UTILITY LOCATION INFORMATION FOR EXCAVATORS  
1-800-892-0123  
OR 811

PROJECT ENGINEER: DEBRA BARRETT  
PROJECT MANAGER: LEVI LUND

GROSS LENGTH = 2025.00 FT. = 0.384 MILE  
NET LENGTH = 2025.00 FT. = 0.384 MILE

CONTRACT NO. 74A38

STATE OF ILLINOIS  
DEPARTMENT OF TRANSPORTATION

SUBMITTED April 1 20 21  
Jeffrey P. Mynick  
REGIONAL ENGINEER

May 7, 2021 [Signature]  
ENGINEER OF DESIGN AND ENVIRONMENT

May 7, 2021 [Signature]  
DIRECTOR OF HIGHWAYS PROJECT IMPLEMENTATION 13

PRINTED BY THE AUTHORITY  
OF THE STATE OF ILLINOIS

GENERAL NOTES

THIS PROJECT IS LOCATED ON US 45 IN THE CITY OF EFFINGHAM IN EFFINGHAM COUNTY. THE PROJECT IS LOCATED FROM NORTH OF RICKLEMAN AVE. TO NORTH OF TECHNOLOGY DR. ON US 45. THE WORK INCLUDED IN SECTION D7 PATCHING 2021-4 CONSISTS OF CLASS B PAVEMENT PATCHING, TRAFFIC CONTROL, AND ANY OTHER WORK NECESSARY TO COMPLETE THE SECTION.

THE ACTUAL LOCATIONS OF PAVEMENT PATCHING AND FINAL QUANTITIES SHALL BE DETERMINED BY THE ENGINEER IN THE FIELD.

DETECTOR LOOPS REMOVED DUE TO PATCHING WILL BE REPLACED IN KIND AND PAID FOR AS DETECTOR LOOP, TYPE 1.

INDEX OF SHEETS

SHEET NO.	ITEM
1	COVER SHEET
2	INDEX OF SHEETS, GENERAL NOTES,
3	SUMMARY OF QUANTITIES
4	SCHEDULE OF QUANTITIES
5-8	PLAN SHEETS
9	DISTRICT 7 PAVEMENT MARKING DETAILS
10-11	DETOUR MAP

THE FOLLOWING STANDARDS ARE A PART OF THESE PLANS AND ARE INCLUDED AFTER SHEET NO. 11 :

STD. NO.	DESCRIPTION
000001-08	STANDARD SYMBOLS, ABBREVIATIONS AND PATTERNS
001001-02	AREAS OF REINFORCEMENT BARS
001006	DECIMAL OF AN INCH AND OF A FOOT
420001-09	PAVEMENT JOINTS
420701-03	PAVEMENT WELDED WIRE REINFORCEMENT
442101-09	CLASS B PATCHES
701101-05	OFF-ROAD OPERATIONS, MULTILANE, 15' TO 24" FROM PAVEMENT EDGE
701106-02	OFF-ROAD OPERATIONS, MULTILANE, MORE THAN 15' AWAY
701426-09	LANE CLOSURE, MULTILANE, INTERMITTENT OR MOVING OPERATIONS, FOR SPEEDS $\geq$ 45 MPH
701451-05	RAMP CLOSURE FREEWAY/EXPRESSWAY
701601-09	URBAN LANE CLOSURE, MULTILANE, 1W OR 2W WITH MEDIAN
701701-10	URBAN LANE CLOSURE, MULTILANE INTERSECTION
701901-08	TRAFFIC CONTROL DEVICES
780001-05	TYPICAL PAVEMENT MARKINGS
886001-01	DETECTOR LOOP INSTALLATIONS
886006-01	TYPICAL LAYOUT FOR DETECTION LOOPS
667101-02	PERMANENT SURVEY MARKERS

MODEL: Default  
 FILE NAME: p:\pub\harronm.dwt\illinois.gov\PWIDOT\Documents\DOT\_Offices\District 7\Projects\74A38\CADD\Drawings\DOT\74A38-D7-Patching.dgn

REV. - MS

USER NAME = steffenmk	DESIGNED -	REVISED -	<b>STATE OF ILLINOIS DEPARTMENT OF TRANSPORTATION</b>	<b>INDEX OF SHEETS &amp; GENERAL NOTES</b>		F.A.P. RTE.	SECTION	COUNTY	TOTAL SHEETS	SHEET NO.
DRAWN -	REVISED -	328				D7 PATCHING 2021-4	EFFINGHAM	11	2	
PLOT SCALE = 100,0000 ' / in.	CHECKED -	REVISED -		SCALE: SHEET OF SHEETS STA. TO STA.		CONTRACT NO. 74A38				
PLOT DATE = 4/1/2021	DATE -	REVISED -		ILLINOIS FED. AID PROJECT						

SUMMARY OF QUANTITIES			TOTAL QUANTITIES	CONSTRUCTION TYPE CODE		
CODE NO	ITEM	UNIT		0006		
44200050	WELDED WIRE REINFORCEMENT	SO YD	2037	2037		
44201000	CLASS B PATCHES, TYPE IV, 12 INCH	SO YD	2037	2037		
44201298	DOWEL BARS 1 1/4"	EACH	1204	1204		
44213200	SAW CUTS	FOOT	2960	2960		
44213208	TIE BARS 1 1/4"	EACH	1285	1285		
67100100	MOBILIZATION	L SUM	1	1		
70100820	TRAFFIC CONTROL AND PROTECTION, STANDARD	L SUM	1	1		
	701451					
70102630	TRAFFIC CONTROL AND PROTECTION, STANDARD	L SUM	1	1		
	701601					
70102635	TRAFFIC CONTROL AND PROTECTION, STANDARD	L SUM	1	1		
	701701					
70107025	CHANGEABLE MESSAGE SIGN	CAL DA	28	28		
70200100	NIGHTTIME WORK ZONE LIGHTING	L SUM	1	1		
* 78001100	PAINT PAVEMENT MARKING - LETTERS AND SYMBOLS	SO FT	62.4	62.4		

SUMMARY OF QUANTITIES			TOTAL QUANTITIES	CONSTRUCTION TYPE CODE		
CODE NO	ITEM	UNIT		0006		
* 78001110	PAINT PAVEMENT MARKING - LINE 4"	FOOT	1195	1195		
* 78001130	PAINT PAVEMENT MARKING - LINE 6"	FOOT	300	300		
* 78001140	PAINT PAVEMENT MARKING - LINE 8"	FOOT	145	145		
* 78001180	PAINT PAVEMENT MARKING - LINE 24"	FOOT	14	14		
* 88600100	DETECTOR LOOP, TYPE I	FOOT	270	270		
Z0016702	DETOUR SIGNING	L SUM	1	1		
Z0049799	PROTECTING OR RESETTING SURVEY MARKERS	EACH	2	2		

\* SPECIALTY ITEM

REV. - MS

\* MODEL: Default FILE: \\p11g11nrcor01.dal.illinois.gov\IWD\DOT\Documents\110DOT\Office\BID\District 7\Projects\74A38\CAD\Bids\CAD\Bids\74A38-pln-SOQ.dgn

USER NAME = steffemk	DESIGNED -	REVISED -
	DRAWN -	REVISED -
PLOT SCALE = 100.0000' / in.	CHECKED -	REVISED -
PLOT DATE = 4/1/2021	DATE -	REVISED -

STATE OF ILLINOIS  
DEPARTMENT OF TRANSPORTATION

SUMMARY OF QUANTITIES

SCALE: SHEET OF SHEETS STA. TO STA.

F.A.P. RTE.	SECTION	COUNTY	TOTAL SHEETS	SHEET NO.
328	D7 PATCHING 2021-4	EFFINGHAM	11	3
CONTRACT NO. 74A38				
ILLINOIS FED. AID PROJECT				

MODEL: Default  
 FILE NAME: p:\pub\lhamon.dwt\illinois.gov\PWIDOT\Documents\DOT\_Offices\District 7\Projects\7A38\CADD\DATA\CAD\patches\DOT7A38-rlr-schedule.dgn

PATCH NUMBER	LANE	STATION	TO	STATION	LENGTH	WIDTH	DEPTH	CLASS B PATCHES, 12 INCH				WELDED WIRE REINFORCEMENT (SQ YD)	DOWEL BARS 1 1/4" (EACH)	SAW CUTS (FT)	TIE BARS 1 1/4" (EACH)
								TYPE I, (SQ YD)	TYPE II (SQ YD)	TYPE III (SQ YD)	TYPE IV (SQ YD)				
1	SB	72+36		69+36	300.00	14	12				466.67	466.67	252	642.0	300
2	SB MEDIAN	67+36		66+36	100.00	14	12				155.56	155.56	96	242.0	100
3	SB MEDIAN	66+36		65+51	85.00	16	12				151.11	151.11	98	218.0	85
4	SB	59+86		59+66	20.00	14	12				31.11	31.11	36	82.0	20
5	SB MEDIAN	53+96		52+96	100.00	14	12				155.56	155.56	96	242.0	100
6	SB MEDIAN	52+96		52+11	85.00	16	12				151.11	151.11	98	218.0	85
7	NB	52+16		54+61	245.00	14	12				381.11	381.11	216	532.0	245
8	NB	63+61		64+61	100.00	14	12				155.56	155.56	96	242.0	100
9	NB	65+51		68+01	250.00	14	12				388.89	388.89	216	542.0	250
PROJECT TOTAL =											2037	2037	1204	2960	1285

LANE	PATCH NUMBER	STATION	TO	STATION	LENGTH (FT)	SQ FT	FT	FT	FT	FT	
SB	1	72+36.00		69+36.00	300.00	0	420	0	0	0	
SB	2	67+36.00		66+36.00	100.00	31.2	100	100	0	14	
SB	3	66+36.00		65+51.00	85.00	0	0	0	0	0	
SB	4	59+86.00		59+66.00	20.00	0	40	0	0	0	
SB	5	53+96.00		52+96.00	100.00	31.2	100	100	0	0	
SB	6	52+96.00		52+11.00	85.00	0	0	0	0	0	
NB	7	52+16.00		54+61.00	245.00	0	220	0	75	0	
NB	8	63+61.00		64+61.00	100.00	0	100	100	0	0	
NB	9	65+51.00		68+01.00	250.00	0	215	0	70	0	
<b>TOTAL:</b>						<b>1285</b>	<b>62.4</b>	<b>1195</b>	<b>300</b>	<b>145</b>	<b>14</b>

PAINT PAVEMENT MARKING-  
 LETTERS AND SYMBOLS  
 PAINT PAVEMENT MARKING-  
 LINE 4"  
 PAINT PAVEMENT MARKING-  
 LINE 6"  
 PAINT PAVEMENT MARKING-  
 LINE 8"  
 PAINT PAVEMENT MARKING-  
 LINE 24"

USER NAME = steffenmk	DESIGNED -	REVISED -
	DRAWN -	REVISED -
PLOT SCALE = 100,0000' / in.	CHECKED -	REVISED -
PLOT DATE = 4/1/2021	DATE -	REVISED -

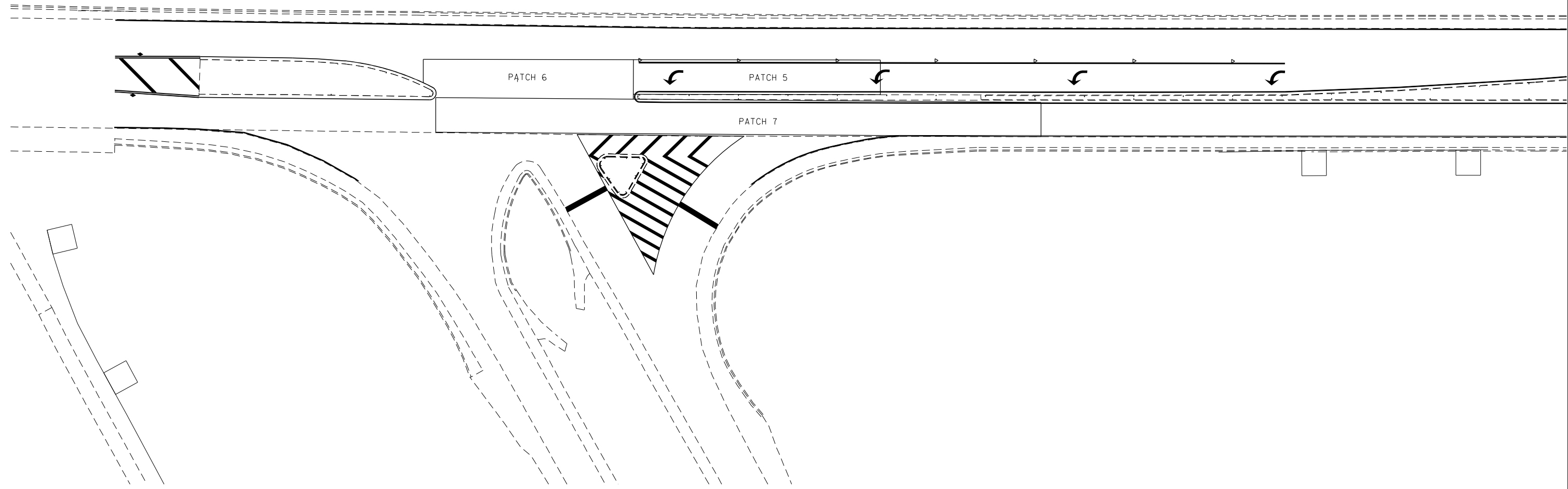
**STATE OF ILLINOIS  
DEPARTMENT OF TRANSPORTATION**

**SCHEDULE OF QUANTITIES**

SCALE: SHEET OF SHEETS STA. TO STA.

F.A.P. RTE.	SECTION	COUNTY	TOTAL SHEETS	SHEET NO.
328	D7 PATCHING 2021-4	EFFINGHAM	11	4
CONTRACT NO. 74A38				
ILLINOIS		FED. AID PROJECT		

MODEL: Default  
 FILE NAME: \\paulhammon.dot.illinois.gov\PI\DOT\Documents\DOT\_Offices\District 7\Projects\74A38\CADD\Drawings\74A38-514-01.dwg



USER NAME = steffenmk	DESIGNED -	REVISED -
	DRAWN -	REVISED -
PLOT SCALE = 100,0000' / in.	CHECKED -	REVISED -
PLOT DATE = 4/1/2021	DATE -	REVISED -

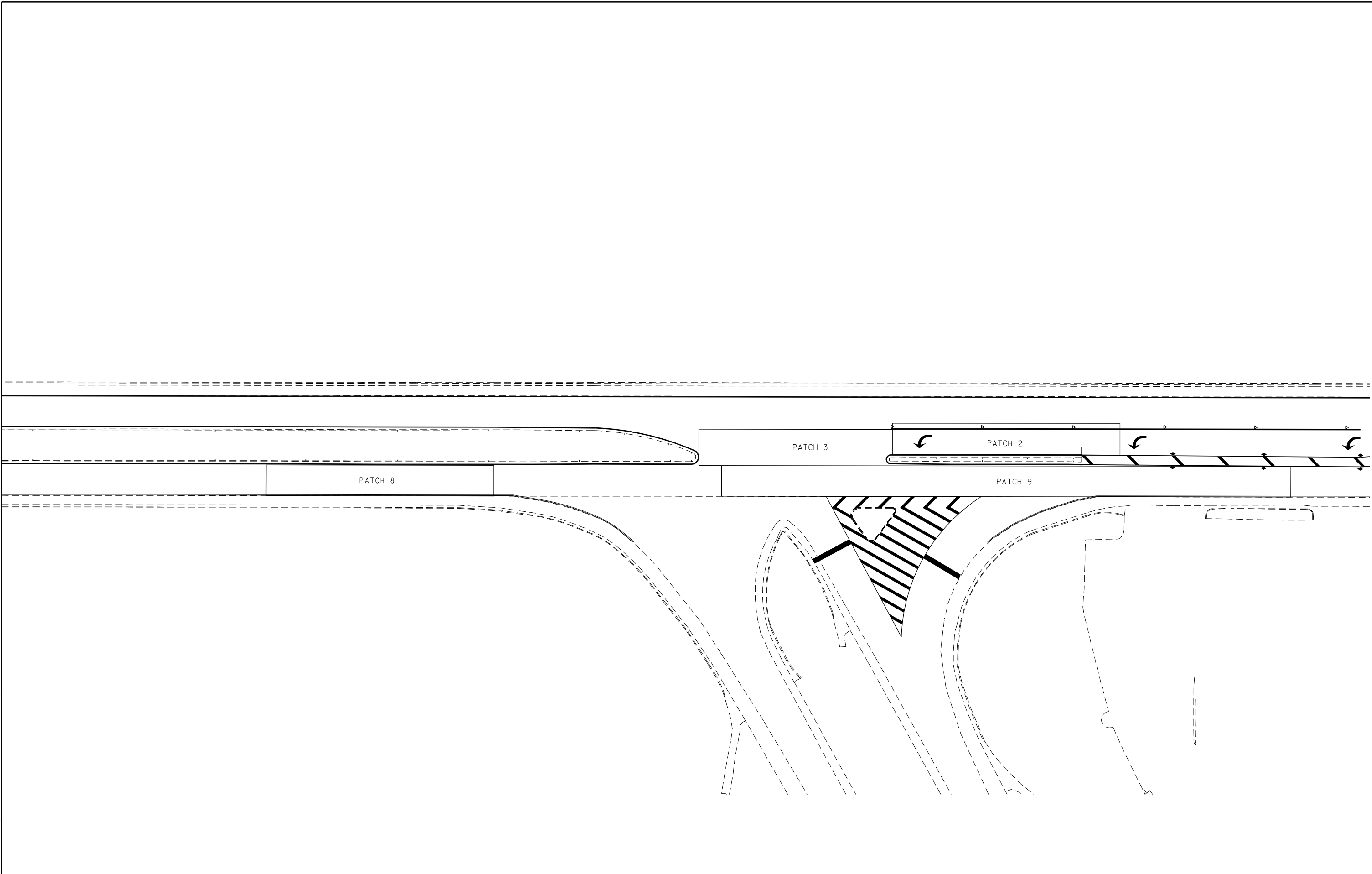
**STATE OF ILLINOIS**  
**DEPARTMENT OF TRANSPORTATION**

**PATCHING LOCATIONS**

SCALE:      SHEET      OF      SHEETS      STA.      TO STA.

F.A.P. RTE.	SECTION	COUNTY	TOTAL SHEETS	SHEET NO.
328	D7 PATCHING 2021-4	EFFINGHAM	11	5
CONTRACT NO. 74A38				
ILLINOIS FED. AID PROJECT				





MODEL: Default  
 FILE NAME: p:\pub\harronm.dwg  
 PROJECT: 74A38\CADD\Drawings\DOT\_Offices\Drawings\74A38\CADD\Drawings\DOT\_Offices\Drawings\74A38\Sheet\74A38.dwg

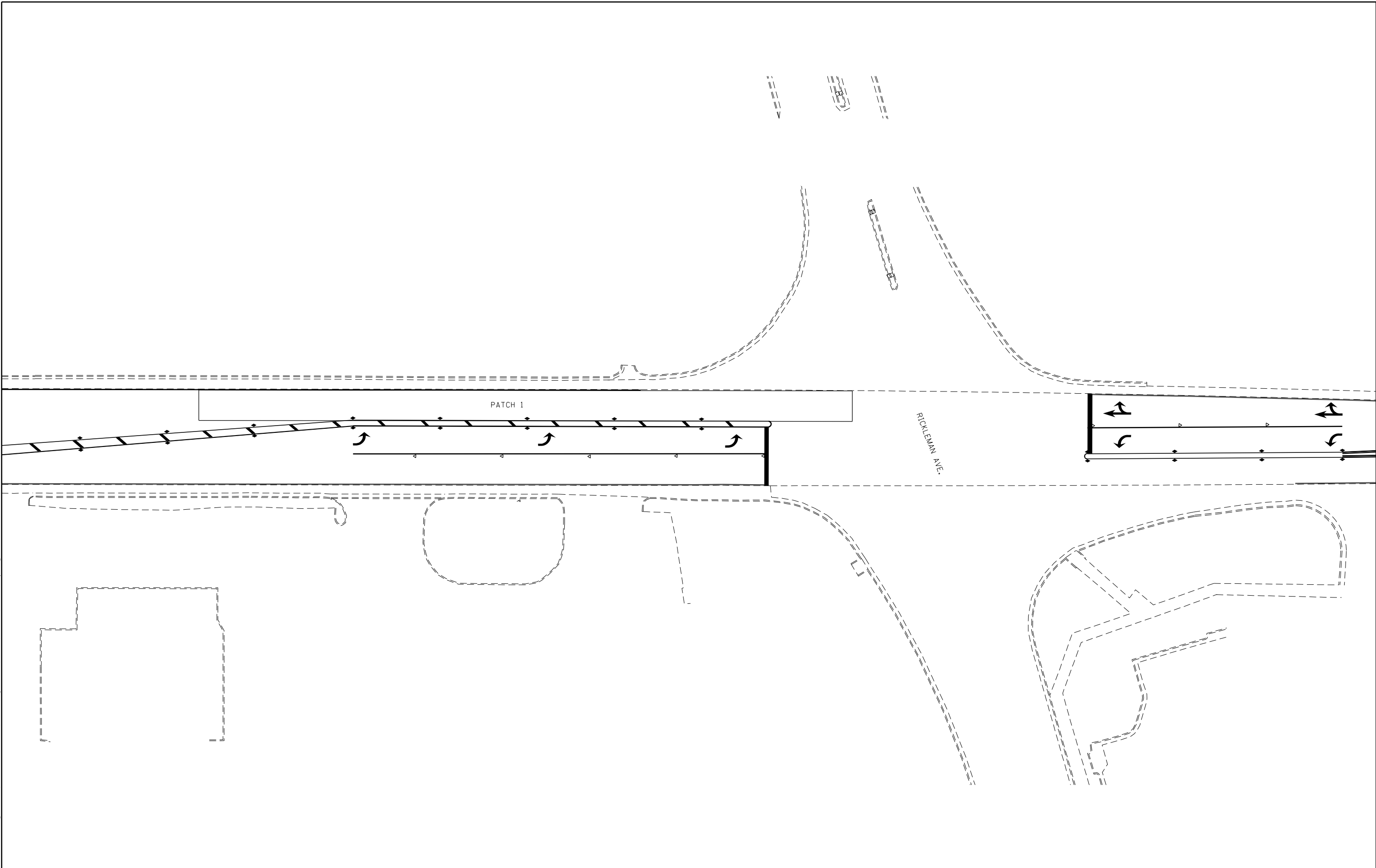
USER NAME = steffenmk	DESIGNED -	REVISED -
	DRAWN -	REVISED -
PLOT SCALE = 100,0000' / in.	CHECKED -	REVISED -
PLOT DATE = 4/1/2021	DATE -	REVISED -

**STATE OF ILLINOIS**  
**DEPARTMENT OF TRANSPORTATION**

**PATCHING LOCATIONS**

SCALE: SHEET OF SHEETS STA. TO STA.

F.A.P. RTE.	SECTION	COUNTY	TOTAL SHEETS	SHEET NO.
328	D7 PATCHING 2021-4	EFFINGHAM	11	7
CONTRACT NO. 74A38				
ILLINOIS FED. AID PROJECT				



MODEL: Default  
 FILE NAME: p:\pub\baronm.dwg  
 PROJECT: 74A38\CADD\Drawings\DOT\_Offices\Drawings\74A38\CADD\Drawings\DOT\_Offices\Drawings\74A38\Sheet\8.dwg

USER NAME = steffenmk	DESIGNED -	REVISED -
	DRAWN -	REVISED -
PLOT SCALE = 100,0000' / in.	CHECKED -	REVISED -
PLOT DATE = 4/1/2021	DATE -	REVISED -

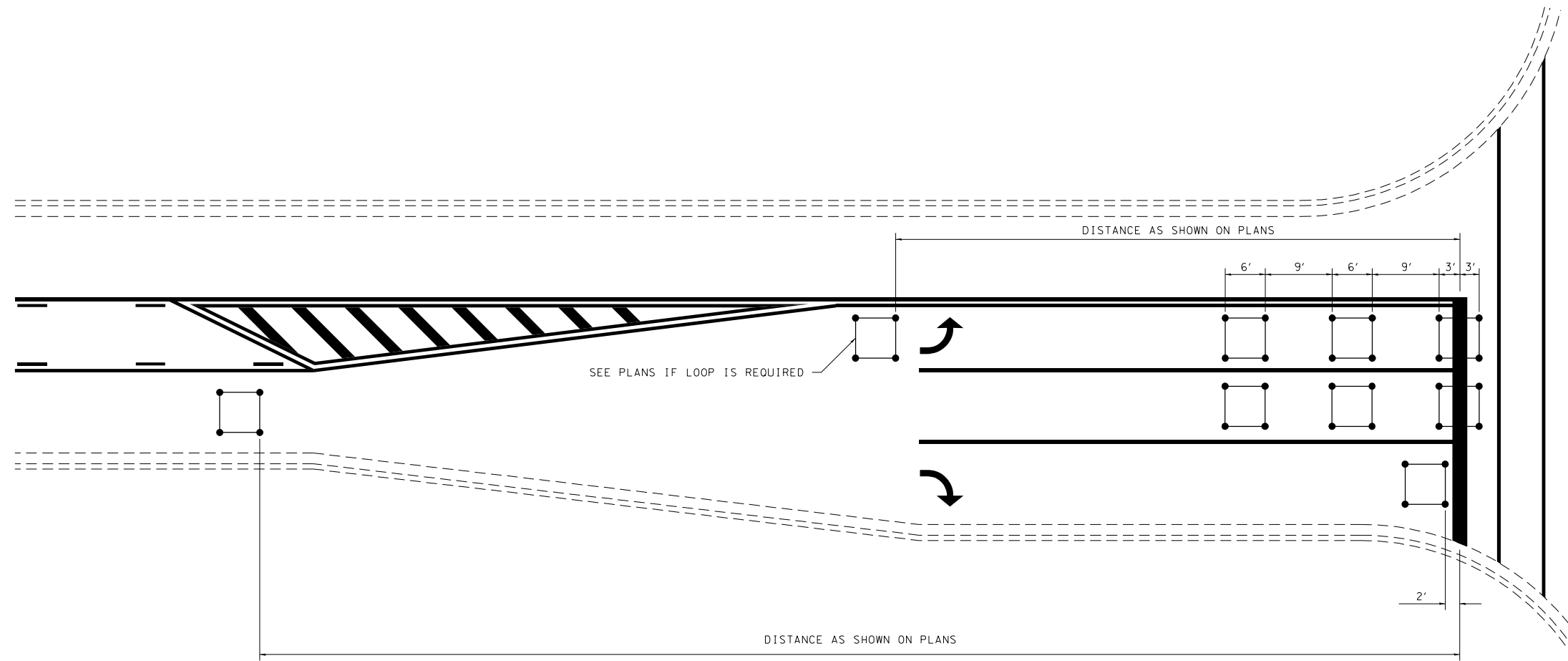
**STATE OF ILLINOIS**  
**DEPARTMENT OF TRANSPORTATION**

PATCHING LOCATIONS				
SCALE:	SHEET	OF	SHEETS	STA. TO STA.

F.A.P. RTE.	SECTION	COUNTY	TOTAL SHEETS	SHEET NO.
328	D7 PATCHING 2021-4	EFFINGHAM	11	8
CONTRACT NO. 74A38				
ILLINOIS FED. AID PROJECT				



# TYPICAL APPLICATION OF DETECTOR LOOPS



**NOTE:**

1. EACH LOOP SHALL HAVE ITS OWN HOMERUN TO THE GULFBOX/HANDHOLE.
2. LOOPS SHOULD BE CENTERED IN EACH LANE.
3. USE 6' BY 6' LOOPS FOR LANE WIDTHS OF 11' OR GREATER.
4. USE 5' BY 5' LOOPS IF LANE WIDTH IS LESS THAN 11'.

NOT TO SCALE

**DISTRICT 7 DETAIL NO. 88600100**

MODEL: Default  
 FILE NAME: p:\pub\amr\amr.dwg  
 PROJECT: 74A38-CAAD\Drawings\DOT - Office\District 7\Project\74A38-CAAD\Drawings\DOT\74A38-CH-CE-0116.dwg

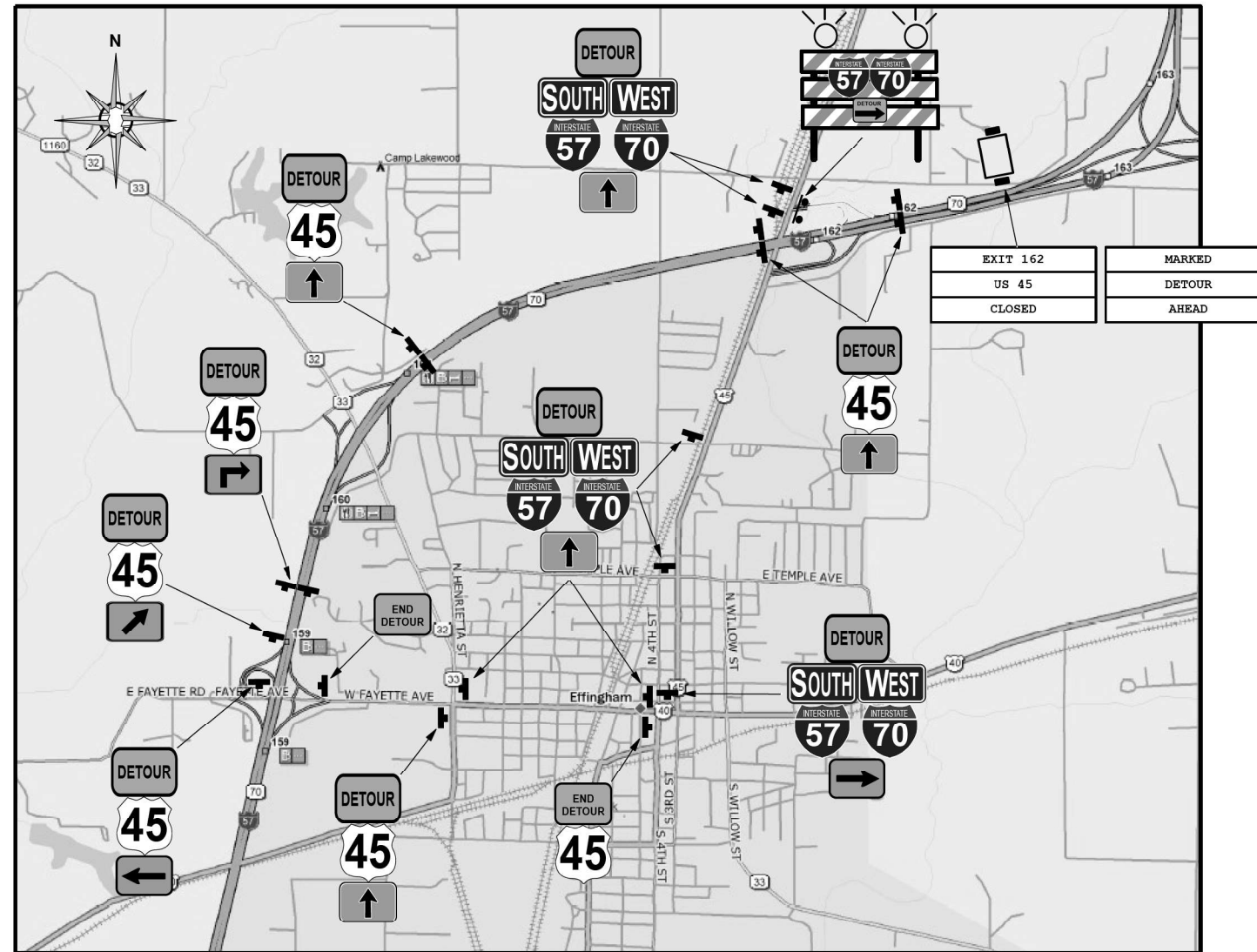
USER NAME = steffenmk	DESIGNED -	REVISED -
	DRAWN -	REVISED -
PLOT SCALE = 100,0000 ' / in.	CHECKED -	REVISED -
PLOT DATE = 4/1/2021	DATE -	REVISED -

**STATE OF ILLINOIS  
DEPARTMENT OF TRANSPORTATION**

**TYPICAL APPLICATION OF DETECTOR LOOP**

SCALE: SHEET OF SHEETS STA. TO STA.

F.A.P. RTE.	SECTION	COUNTY	TOTAL SHEETS	SHEET NO.
328	D7 PATCHING 2021-4	EFFINGHAM	11	9
			CONTRACT NO. 74A38	
		ILLINOIS	FED. AID PROJECT	



**SIGN LEGEND**

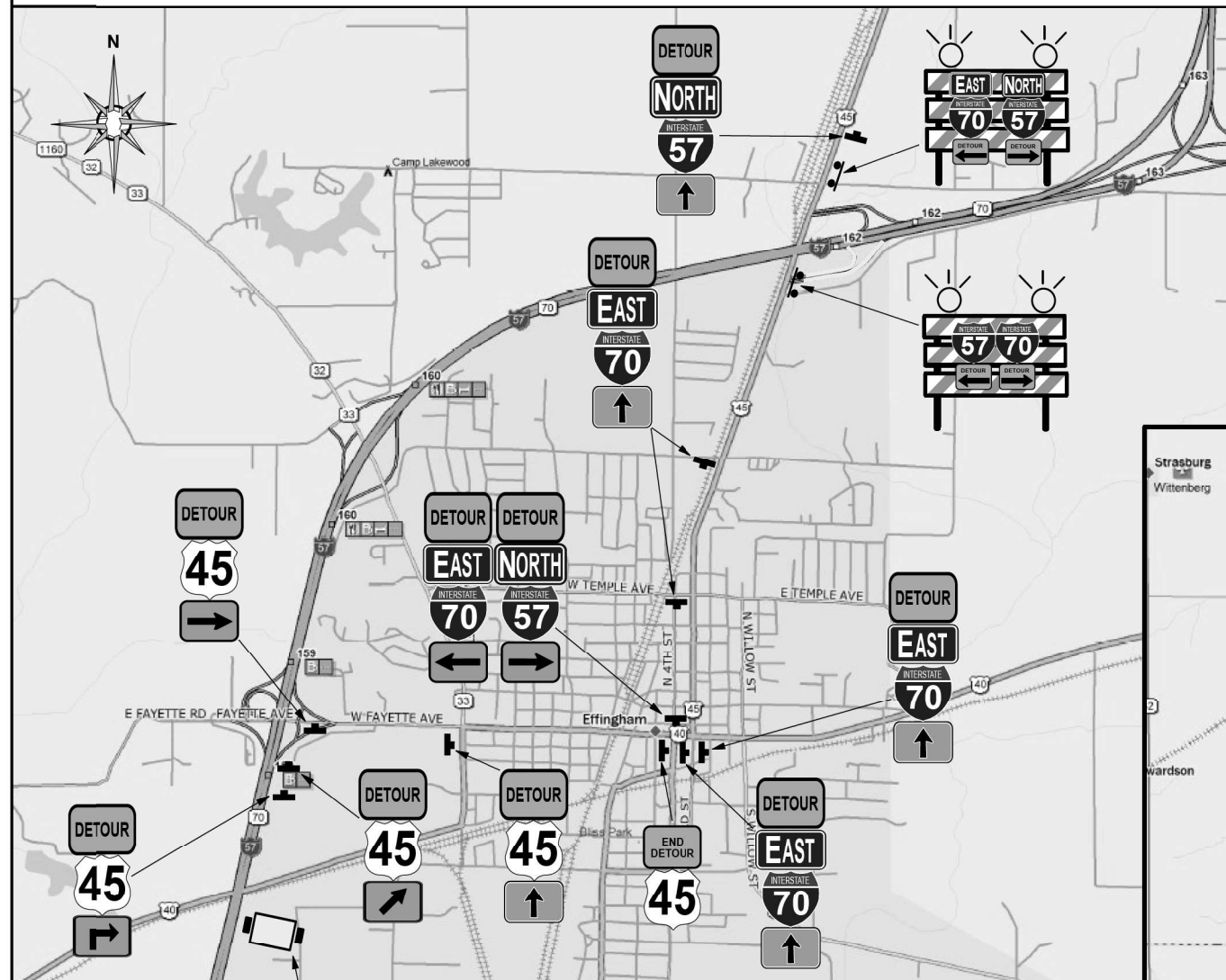
	M1-1-36		M3-3(BL)-3015		M6-3(O)-3018			W20-2(O)-48
	M1-1-36		M3-4(BL)-3015		M5-1R(O)-3018			M4-9R(O)-3024
	M1-4-36		M4-8a(O)-3024		M5-1L(O)-3018			M4-9L(O)-3024
								TY III Barricade

**Closure of Exit 162 Ramps shall be in conjunction with Standards 701451 & 701901.**

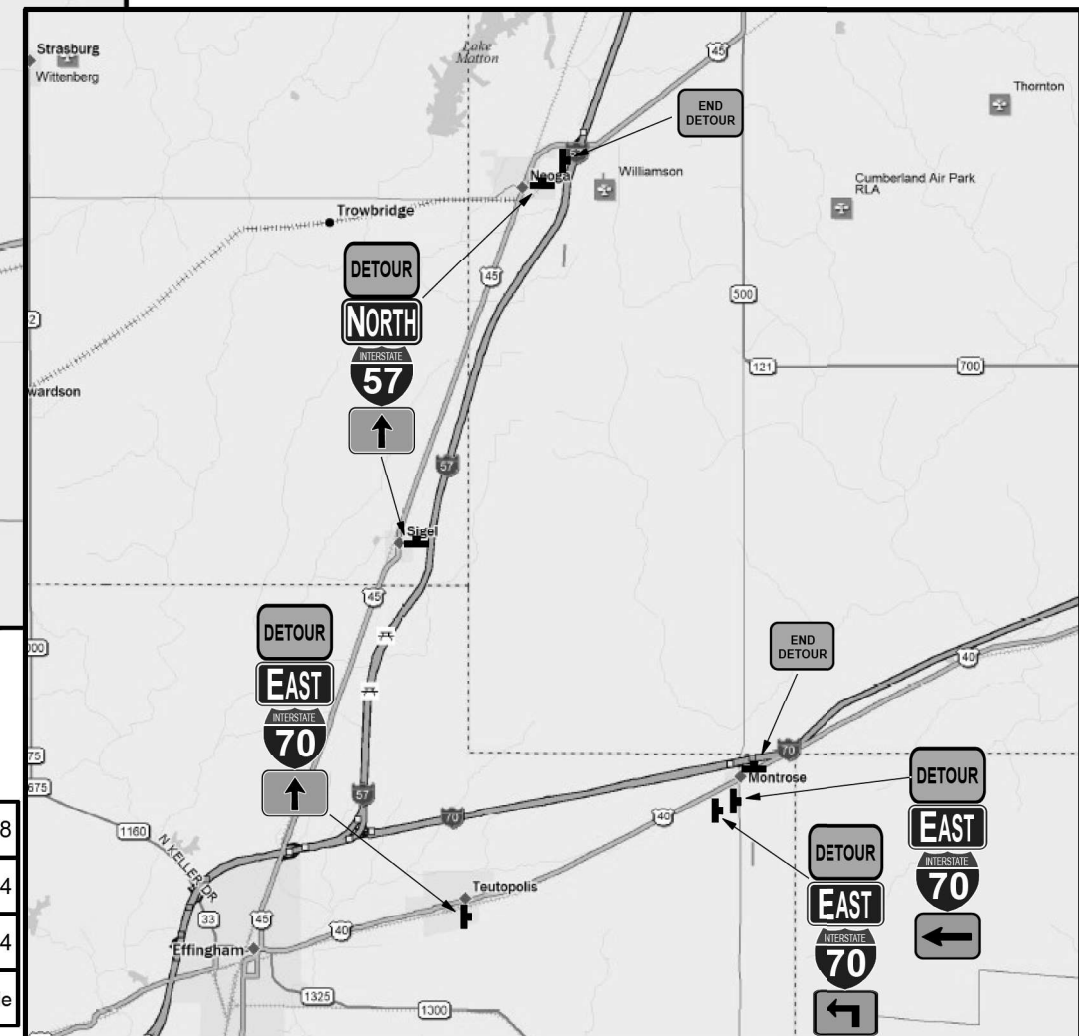
USER NAME = stefenmk	DESIGNED -	REVISED -
PLOT SCALE = 100,000' / in.	DRAWN -	REVISED -
PLOT DATE = 4/1/2021	CHECKED -	REVISED -
	DATE -	REVISED -

SCALE:	SHEET	OF	SHEETS	STA.	TO	STA.
--------	-------	----	--------	------	----	------

F.A.P. RTE.	SECTION	COUNTY	TOTAL SHEETS	SHEET NO.
328	D7 PATCHING 2021-4	EFFINGHAM	11	10
CONTRACT NO. 74A38				
ILLINOIS FED. AID PROJECT				



Closure of Exit 162 Ramps shall be in conjunction with Standards 701451 & 701901.



EXIT 162	MARKED
US 45	DETOUR
CLOSED	AHEAD

**SIGN LEGEND**

	M1-1-36		M3-2(BL)-3015		M6-3(O)-3018		W20-2(O)-48
	M1-1-36		M3-1(BL)-3015		M5-1R(O)-3018		M4-9R(O)-3024
	M1-4-36		M4-8a(O)-3024		M5-1L(O)-3018		M4-9L(O)-3024
							TY III Barricade

MODEL: Default  
 FILE NAME: \\paulhammon.dot.illinois.gov\PIWDOT\Documents\DOT\_Offices\District 7\Projects\7A338\CADD\Drawings\7A338-ETC-001.dgn  
 PROJECT: 7A338

USER NAME = steffnmk	DESIGNED -	REVISED -
	DRAWN -	REVISED -
PLOT SCALE = 100,000' / in.	CHECKED -	REVISED -
PLOT DATE = 4/1/2021	DATE -	REVISED -

**STATE OF ILLINOIS  
DEPARTMENT OF TRANSPORTATION**

<b>EASTBOUND DETOUR MAP</b>			
SCALE:	SHEET	OF SHEETS	STA. TO STA.

F.A.P. RTE.	SECTION	COUNTY	TOTAL SHEETS	SHEET NO.
328	D7 PATCHING 2021-4	EFFINGHAM	11	11
CONTRACT NO. 74A38				
ILLINOIS FED. AID PROJECT				