

STATE OF ILLINOIS  
 DEPARTMENT OF TRANSPORTATION  
 DIVISION OF HIGHWAYS

**PROPOSED  
 HIGHWAY PLANS**

VARIOUS ROUTES  
 SECTION D 6 HT PVMNT MRK RPR 22-17  
 VARIOUS COUNTIES

M-60-027-21

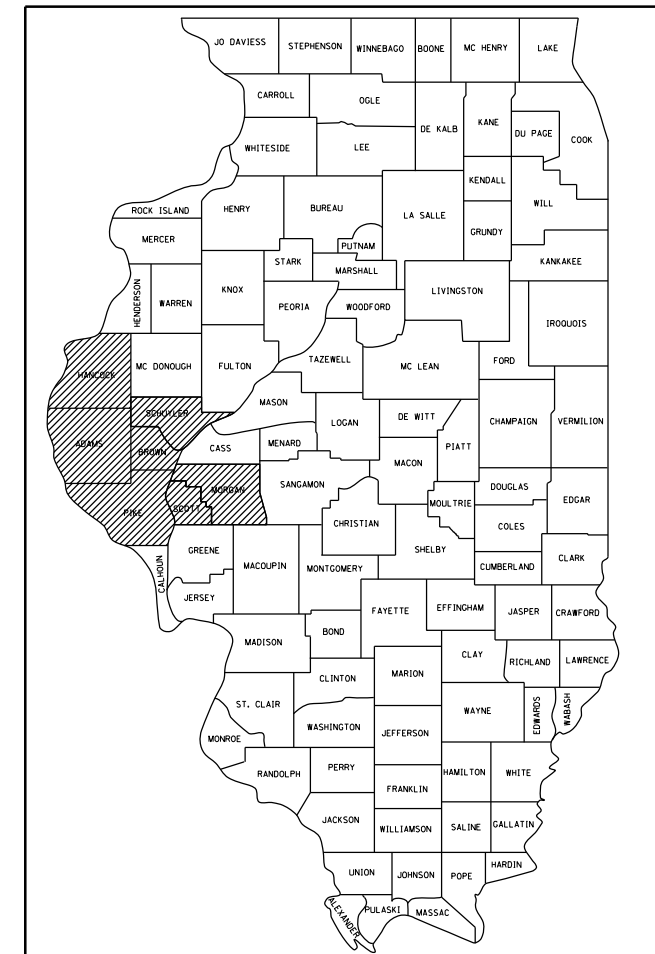
FOR INDEX OF SHEETS, SEE SHEET NO. 2

RTE.	SECTION	COUNTY	TOTAL SHEETS	SHEET NO.
VAR.	•	VARIOUS	8	1
		ILLINOIS	CONTRACT NO. 46581	

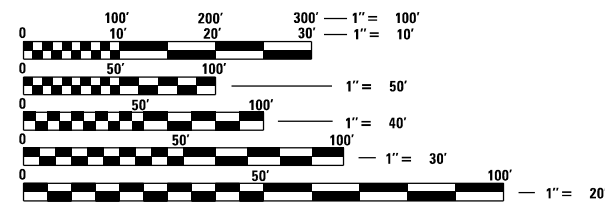
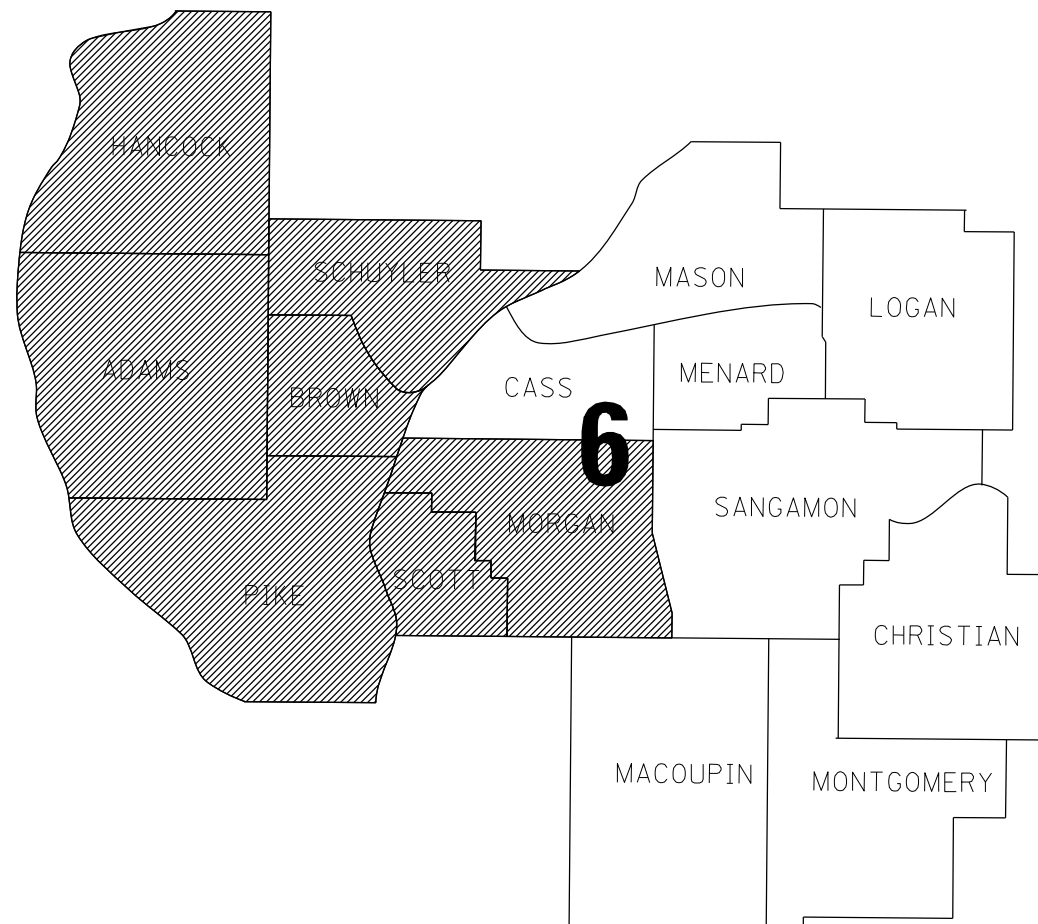
•D-6 HT PVMNT MRK RPR 22-17

D-XX-XXX-XX

D-6



LOCATION OF SECTION INDICATED THIS: - [shaded area] -



FULL SIZE PLANS HAVE BEEN PREPARED USING STANDARD ENGINEERING SCALES. REDUCED SIZED PLANS WILL NOT CONFORM TO STANDARD SCALES. IN MAKING MEASUREMENTS ON REDUCED PLANS, THE ABOVE SCALES MAY BE USED.

J.U.L.I.E.  
 JOINT UTILITY LOCATION INFORMATION FOR EXCAVATION  
 1-800-892-0123  
 OR 811

PROJECT ENGINEER: JASON JONES (217) 785-5306  
 PROJECT MANAGER: ERIC RENT (217) 785-0289

CONTRACT NO. 46581

STATE OF ILLINOIS  
 DEPARTMENT OF TRANSPORTATION  
 DIVISION OF HIGHWAYS

SUBMITTED March 25, 20 21

*Jeff P. Myer*  
 REGION FOUR ENGINEER

May 7, 2021  
*Scott A. Elk*  
 ENGINEER OF DESIGN AND ENVIRONMENT

May 7, 2021  
*James J. Jones*  
 DIRECTOR OF HIGHWAYS PROJECT IMPLEMENTATION 13

PRINTED BY THE AUTHORITY  
 OF THE STATE OF ILLINOIS

INDEX OF SHEETS

- 1 COVER SHEET
- 2 INDEX OF SHEETS, STANDARDS, & SIGNATURES
- 3 SUMMARY OF QUANTITIES
- 4-8 SCHEDULE OF QUANTITIES

STANDARDS

- 701311-03 LN CLOSURE 2L2W-MOVING OP DAY ONLY
- 701400-10 APPROACH TO LANE CLOSURE-FREEWAY EXPRESSWAY
- 701406-12 LANE CLOSURE FREEWAY EXPRESSWAY-DAY OP ONLY
- 701426-09 LANE CLOSURE MULTI LANE-INTERMITTANT OR MOVING OP 45 MPH OR MORE
- 701451-05 RAMP CLOSURE FREEWAY EXPRESSWAY
- 701501-06 URBAN LANE CLOSURE 2L2W-UNDIVIDED
- 701502-09 URBAN LANE CLOSURE 2L2W WITH BIDIRECT LEFT TURN LANE
- 701901-08 TRAFFIC CONTROL DEVICES
- 001006 DECIMAL OF AN INCH AND OF A FOOT
- 780001-05 TYPICAL PAVEMENT MARKINGS

REV. - MS

\*D-6 HT PVMNT MRK RPR 22-17

FILE NAME =	USER NAME = SHARPTD	DESIGNED -	REVISED -	<b>STATE OF ILLINOIS DEPARTMENT OF TRANSPORTATION</b>	<b>GENERAL NOTES</b>	RTE.	SECTION	COUNTY	TOTAL SHEETS	SHEET NO.	
S:\CONTRMAINT_CAD\46581 D6 HT PVMNT MRK	RPR FY22 (West)\West Plans\sh-t-2-gennote.dwg	DRAWN -	REVISED -			VAR.	*	VARIOUS	8	2	
Default	PLOT SCALE = 2.0000' / 1in.	CHECKED -	REVISED -			CONTRACT NO. 46581			ILLINOIS FED. AID PROJECT		
	PLOT DATE = 3/25/2021	DATE -	REVISED -			SCALE:	SHEET	OF	SHEETS	STA.	TO

CODE NO.	ITEM	UNIT	TOTAL QUANTITY	RURAL									
				100% STATE ADAMS ROADWAY 0021	100% STATE PIKE ROADWAY 0021	100% STATE HANCOCK ROADWAY 0021	100% STATE SCHUYLER ROADWAY 0021	100% STATE SCOTT ROADWAY 0021	100% STATE MORGAN ROADWAY 0021				
				78000100	THERMOPLASTIC PAVEMENT MARKING - LETTERS AND SYMBOLS	SQ FT	5094	246	279	123	756	217	3473
				78000400	THERMOPLASTIC PAVEMENT MARKING - LINE 6"	FOOT	14099	0	3550	5616	2553	0	2380
78000500	THERMOPLASTIC PAVEMENT MARKING - LINE 8"	FOOT	4195	600	600	120	2270	0	605				
78000600	THERMOPLASTIC PAVEMENT MARKING - LINE 12"	FOOT	8892	300	1490	364	5044	0	1694				
78000650	THERMOPLASTIC PAVEMENT MARKING - LINE 24"	FOOT	2464	270	580	238	299	72	1005				
78009000	MODIFIED URETHANE PAVEMENT MARKING - LETTERS AND SYMBOLS	SQ FT	8404	2257	0	1625	0	0	4522				
78009005	MODIFIED URETHANE PAVEMENT MARKING - LINE 5"	FOOT	1368694	156920	28450	139000	0	0	1044324				
78009006	MODIFIED URETHANE PAVEMENT MARKING - LINE 6"	FOOT	46731	12466	2000	10100	0	0	22165				
78009008	MODIFIED URETHANE PAVEMENT MARKING - LINE 8"	FOOT	35936	6896	0	3100	0	0	25940				
78009012	MODIFIED URETHANE PAVEMENT MARKING - LINE 12"	FOOT	11585	4750	0	1400	0	0	5435				
78009024	MODIFIED URETHANE PAVEMENT MARKING - LINE 24"	FOOT	2068	1275	0	150	0	0	643				
78300201	PAVEMENT MARKING REMOVAL - GRINDING	SQ FT	10000	1667	1667	1667	1667	1667	1667				
X7800825	HOT SPRAY THERMOPLASTIC PAVEMENT MARKING LINE - 5 INCH	FOOT	477489	25000	16100	20988	87550	13000	314851				
X7800835	HOT SPRAY THERMOPLASTIC PAVEMENT MARKING LINE - 6 INCH	FOOT	16999	0	780	34	5260	425	10500				

\*D-6 HT PVMNT MRK RPR 22-17

REV. - MS

FILE NAME = S:\CONTRMAINT_CAD\46581 D6 HT PVMNT MRK RPR FY22 (West)\West Plans\sh-3-500.dgn	USER NAME = SHARPTD	DESIGNED -	REVISED -	<b>STATE OF ILLINOIS DEPARTMENT OF TRANSPORTATION</b>	<b>SUMMARY OF QUANTITIES</b>				RTE.	SECTION	COUNTY	TOTAL SHEETS	SHEET NO.
Default	PLOT SCALE = 2.0000' / in.	DRAWN -	REVISED -						VAR.	*		8	3
	PLOT DATE = 3/25/2021	CHECKED -	REVISED -		SCALE:	SHEET	OF	SHEETS	STA.	TO	STA.	CONTRACT NO. 46581	
		DATE -	REVISED -		ILLINOIS FED. AID PROJECT								

ADAMS COUNTY			
US-24			
(4TH ST) LOCUST ST TO MAIN ST (TO YORK ST/PART OF IL 57)			
MODIFIED URETHANE			
	COLOR	LENGTH (LF)	DESCRIPTION
5"	WHITE	14,100	
	YELLOW	800	
	<b>TOTAL</b>	<b>14,900</b>	
6"	WHITE	2,030	
8"	WHITE	320	
12"	WHITE	620	
	YELLOW	100	
	<b>TOTAL</b>	<b>720</b>	
24"	WHITE	225	
		<b>AREA (SQ FT)</b>	
L&S	WHITE	125	TURN ARROWS
	WHITE	46	THRU ARROWS
	WHITE	312	COMBO ARROWS
	<b>TOTAL</b>	<b>483</b>	

ADAMS COUNTY			
US-24			
(3RD ST) M.P. 2.69 LOCUST ST TO M.P. 5.60			
MODIFIED URETHANE			
	COLOR	LENGTH (LF)	DESCRIPTION
5"	WHITE	39,600	
	YELLOW	30,300	
	<b>TOTAL</b>	<b>69,900</b>	
6"	WHITE	2,300	
8"	WHITE	3,000	
12"	WHITE	300	
	YELLOW	1,200	
	<b>TOTAL</b>	<b>1,500</b>	
24"	WHITE	200	

ADAMS COUNTY			
IL 96			
HARRISON ST TO CHESTNUT ST			
MODIFIED URETHANE			
	COLOR	LENGTH (LF)	DESCRIPTION
5"	WHITE	400	
	YELLOW	10,400	
	<b>TOTAL</b>	<b>10,800</b>	
6"	WHITE	3,700	
8"	WHITE	550	
12"	WHITE	260	
	YELLOW	160	
	<b>TOTAL</b>	<b>420</b>	
24"	WHITE	350	
		<b>AREA (SQ FT)</b>	
L&S	WHITE	872	

ADAMS COUNTY			
US 24/ IL96			
US24 MP 5.6 to MP 6.75/ N OF US24/IL96 to MP24			
MODIFIED URETHANE			
	COLOR	LENGTH (LF)	DESCRIPTION
5"	WHITE	17,000	
	YELLOW	18,903	
	WHITE	2,517	SKIP
	<b>TOTALS</b>	<b>38,420</b>	
6"	WHITE	1,136	
8"	WHITE	2,476	
12"	WHITE	1,610	
24"	WHITE	180	STOP BARS
L&S	WHITE	677	

ADAMS COUNTY			
US-24			
(3RD ST) MAIN ST TO LOCUST ST			
MODIFIED URETHANE			
	COLOR	LENGTH (LF)	DESCRIPTION
5"	WHITE	12,900	
	YELLOW	1,500	
	<b>TOTAL</b>	<b>14,400</b>	
6"	WHITE	1,200	
	WHITE	400	
	<b>TOTAL</b>	<b>1,600</b>	
12"	WHITE	100	
	YELLOW	100	
	<b>TOTAL</b>	<b>200</b>	
24"	WHITE	120	
		<b>AREA (SQ FT)</b>	
L&S	WHITE	156	TURN ARROWS
	WHITE	69	THRU ARROWS
	<b>TOTAL</b>	<b>225</b>	

ADAMS COUNTY			
IL 96			
CHESTNUT ST TO ILL 96/US24 JUNCTION			
MODIFIED URETHANE			
	COLOR	LENGTH (LF)	DESCRIPTION
5"	WHITE	1,500	
	YELLOW	7,000	
	<b>TOTAL</b>	<b>8,500</b>	
6"	WHITE	1,700	
8"	WHITE	550	
12"	WHITE	300	
24"	WHITE	200	

ADAMS COUNTY			
IL 94			
M.P. 6.9 (IL 94/LAPRAIRIE JUNCT) TO M.P. 9 (IL 94/US 61 JUNT)			
H.S. THERMO			
	COLOR	LENGTH (LF)	DESCRIPTION
5"	WHITE	22,000	
	YELLOW	3,000	
	<b>TOTAL</b>	<b>25,000</b>	
THERMO			
8"	WHITE	600	
12"	WHITE	300	
24"	WHITE	150	

SCOTT COUNTY			
IL 100			
VILLAGE OF BLUFFS, 200 FT S OF E OAKES ST			
THERMO			
	COLOR	LENGTH (LF)	DESCRIPTION
24"	WHITE	72	
		<b>AREA (SQ FT)</b>	
L&S	WHITE	123	RAILROAD SYM

ADAMS COUNTY			
IL 96 (N 24 ST)			
CITY OF QUINCY, 1.5 MILES NORTH OF BROADWAY ST			
THERMO			
	COLOR	LENGTH (LF)	DESCRIPTION
24"	WHITE	72	
		<b>AREA (SQ FT)</b>	
L&S	WHITE	123	RAILROAD SYM

ADAMS COUNTY			
IL 57			
2 MILES SOUTH OF CITY OF QUINCY			
THERMO			
	COLOR	LENGTH (LF)	DESCRIPTION
24"	WHITE	48	
		<b>AREA (SQ FT)</b>	
L&S	WHITE	123	RAILROAD SYM

SCOTT COUNTY			
OLD US-36			
GREAT SCOTT RD TO COULTAS RD			
H.S. THERMO			
	COLOR	LENGTH (LF)	DESCRIPTION
5"	WHITE	5,800	EDGE LINE
	YELLOW	7,200	EDGE LINE
	<b>TOTAL</b>	<b>13,000</b>	
6"	WHITE	425	
THERMO			
	COLOR	AREA (SQ FT)	DESCRIPTION
L&S	WHITE	94	TURN ARROWS

\*PAVEMENT MARKING REMOVAL GRINDING TO BE DETERMINED BY THE ENGINEER ON AN AS NEEDED BASIS

\*D-6 HT PVMNT MRK RPR 22-17

FILE NAME =	USER NAME = SHARPTD	DESIGNED -	REVISED -	<b>STATE OF ILLINOIS DEPARTMENT OF TRANSPORTATION</b>	<b>LOCATIONS ADAMS / SCOTT COUNTIES</b>			RTE.	SECTION	COUNTY	TOTAL SHEETS	SHEET NO.
S:\CONTRMAINT_CAD\46581 D6 HT PVMNT MRK	RPR FY22 (West)\West Plans\sh-4-Locations	DRAWN -	REVISED -					VAR.	*	VARIOUS	8	4
Default	PLOT SCALE = 2.0000' / in.	CHECKED -	REVISED -		SCALE: SHEET OF SHEETS STA. TO STA.			CONTRACT NO. 46581				
	PLOT DATE = 3/25/2021	DATE -	REVISED -		ILLINOIS FED. AID PROJECT							

HANCOCK COUNTY			
IL 110/IL 336			
M.P.0.0 TO M.P. 6			
MODIFIED URETHANE			
	COLOR	LENGTH (LF)	DESCRIPTION
5"	WHITE	77,700	
	YELLOW	61,300	
	<b>TOTAL</b>	<b>139,000</b>	
6"	WHITE	10,100	
8"	WHITE	3,100	
12"	WHITE	1,400	
24"	WHITE	150	
		<b>AREA (SQ FT)</b>	
L&S	WHITE	1,625	

HANCOCK COUNTY			
IL 94/ US 61 INTERSECTION			
4 WAY STOP INTERSECTION IN BOWEN			
THERMO			
	COLOR	LENGTH (LF)	DESCRIPTION
24"	WHITE	60	STOP-BAR

HANCOCK COUNTY			
OAK ST. IL 9/ IL96 INT(DALLAS CITY)			
MP 7.0 INT.			
THERMO			
	COLOR	LENGTH (LF)	DESCRIPTION
6"	WHITE	300	CROSS WALK
24"	WHITE	48	STOP-BAR

HANCOCK COUNTY			
IL 9			
(LA HARPE) INTERSECTION OF IL 9 AND C ST			
H.S. THERMO			
	COLOR	LENGTH (LF)	DESCRIPTION
6"	WHITE	34	STORAGE
		<b>THERMO</b>	
	COLOR	LENGTH (LF)	DESCRIPTION
12"	WHITE	66	PIANO BARS

HANCOCK COUNTY			
IL 96			
(NAUVOO) IOWA ST TO LUMBER ST			
H.S. THERMO			
	COLOR	LENGTH (LF)	DESCRIPTION
5"	WHITE	14,000	EDGE LINE
	YELLOW	1,750	SKIP DASH
	YELLOW	4,800	CENTER LINE
<b>TOTAL</b>		<b>20,550</b>	

HANCOCK COUNTY			
IL 9/ IL 94 INT			
MP 11.30 INT.			
THERMO			
	COLOR	LENGTH (LF)	DESCRIPTION
8"	WHITE	120	
12"	WHITE	40	
24"	WHITE	40	STOP-BAR

HANCOCK COUNTY			
IL 61/ IL 101 INT			
4 WAY STOP IN AUGUSTA MP 8.6 INT.			
THERMO			
	COLOR	LENGTH (LF)	DESCRIPTION
6"	WHITE	1154	PARKING LANES
	WHITE	400	CROSS WALK
<b>TOTAL</b>		<b>1,554</b>	
24"	WHITE	50	STOP-BAR

HANCOCK COUNTY			
IL 94			
4 MILES NORTH OF CITY OF CARTHAGE			
THERMO			
	COLOR	LENGTH (LF)	DESCRIPTION
24"	WHITE	40	
		<b>AREA (SQ FT)</b>	
L&S	WHITE	123	RAILROAD SYM

HANCOCK COUNTY			
MAIN ST (WARSAW)			
2ND ST TO 7TH ST			
H.S. THERMO			
	COLOR	LENGTH (LF)	DESCRIPTION
5"	YELLOW	438	SKIP DASH
		<b>THERMO</b>	
	COLOR	LENGTH (LF)	DESCRIPTION
6"	WHITE	252	CROSSWALK
	WHITE	3,510	PARKING LINES
<b>TOTAL</b>		<b>3,762</b>	
12"	WHITE	258	PIANO BARS

PIKE COUNTY			
IL 107			
INTERSECTION OF IL 104 AND IL 107 NORTH OF PERRY			
THERMO			
	COLOR	LENGTH (LF)	DESCRIPTION
24"	WHITE	85	4 STOP BARS

PIKE COUNTY			
IL 107 (GRIGGSVILLE)			
FRANKLIN ST TO RR CROSSING			
THERMO			
	COLOR	LENGTH (LF)	DESCRIPTION
6"	WHITE	1,000	CROSSWALK
12"	WHITE	850	CHEVRONS
24"	WHITE	230	STOP BARS
		<b>AREA (SQ FT)</b>	
L&S	WHITE	122	RR SYMBOLS

PIKE COUNTY			
IL 96			
QUINCY ST TO 75' S OF 5TH ST (PLEASANT HILL)			
H.S. THERMO			
	COLOR	LENGTH (LF)	DESCRIPTION
5"	WHITE	8,500	EDGE LINE
	YELLOW	900	SKIP DASH
	<b>TOTAL</b>	<b>9,400</b>	
		<b>THERMO</b>	
	COLOR	LENGTH (LF)	DESCRIPTION
6"	YELLOW	2,000	PARKING SPACES
	WHITE	550	CROSSWALK
<b>TOTAL</b>		<b>2,550</b>	
12"	WHITE	90	PIANO BARS
	YELLOW	75	CHEVRONS
<b>TOTAL</b>		<b>165</b>	
24"	WHITE	125	STOP BARS

PIKE COUNTY			
US 54 (E OF LOUISIANA, MO)			
RALPH'S LANDING RD TO CHAMP CLARK BRIDGE			
H.S. THERMO			
	COLOR	LENGTH (LF)	DESCRIPTION
5"	YELLOW	1,500	CENTERLINE
6"	WHITE	250	STORAGE
		<b>THERMO</b>	
	COLOR	LENGTH (LF)	DESCRIPTION
8"	WHITE	100	ISLAND
12"	WHITE	65	CHEVRONS
	YELLOW	200	CHEVRONS
<b>TOTAL</b>		<b>265</b>	
		<b>AREA (SQ FT)</b>	
L & S	WHITE	62	TURN ARROWS

PIKE COUNTY			
IL 106			
OVERHEAD OVER 72/36/110			
H.S. THERMO			
	COLOR	LENGTH (LF)	DESCRIPTION
5"	WHITE	2,600	
	YELLOW	2,600	
	<b>TOTAL</b>	<b>5,200</b>	
6"	WHITE	530	STORAGE
		<b>THERMO</b>	
	COLOR	LENGTH (LF)	DESCRIPTION
8"	WHITE	400	ISLANDS
12"	WHITE	150	CHEVRONS
24"	WHITE	120	7 STOP BARS
		<b>AREA (SQ FT)</b>	
L&S	WHITE	94	TURN ARROWS

PIKE COUNTY			
INTERSTATE 72/US 36/IL 110			
MISSISSIPPI RIVER BRIDGE TO THE SNY BRIDGE			
MODIFIED URETHANE			
	COLOR	LENGTH (LF)	DESCRIPTION
5"	WHITE	9,000	
	YELLOW	9,000	
	<b>TOTAL</b>	<b>18,000</b>	
8"	WHITE	2,000	GORES

PIKE COUNTY			
INTERSTATE 72/US 36/IL 110			
ON/OFF RAMP TO IL 106			
MODIFIED URETHANE			
	COLOR	LENGTH (LF)	DESCRIPTION
5"	WHITE	5,225	
	YELLOW	5,225	
	<b>TOTAL</b>	<b>10,450</b>	

PIKE COUNTY			
IL 106			
INTERSECTION OF IL 96 AND IL 106 SOUTH OF HULL			
THERMO			
	COLOR	LENGTH (LF)	DESCRIPTION
8"	WHITE	100	ISLAND
12"	WHITE	60	CHEVRONS
24"	WHITE	20	STOP BARS

\*PAVEMENT MARKING REMOVAL GRINDING TO BE DETERMINED BY THE ENGINEER ON AN AS NEEDED BASIS

\*D-6 HT PVMNT MRK RPR 22-17

FILE NAME =	USER NAME = SHARPTD	DESIGNED -	REVISED -	<b>STATE OF ILLINOIS DEPARTMENT OF TRANSPORTATION</b>	<b>LOCATIONS HANCOCK / PIKE COUNTIES</b>			RTE.	SECTION	COUNTY	TOTAL SHEETS	SHEET NO.
S:\CONTRMAINT_CAD\46581 D6 HT PVMNT MRK	RPR FY22 (West)\West Plans\sh-4-Locations	DRAWN -	REVISED -					VAR.	*	VARIOUS	8	5
Default	PLOT SCALE = 2.0000' / in.	CHECKED -	REVISED -		SCALE: SHEET OF SHEETS STA. TO STA.			CONTRACT NO. 46581				
	PLOT DATE = 3/25/2021	DATE -	REVISED -		ILLINOIS FED. AID PROJECT							

SCHUYLER			
US 67			
US 67 & CAMDEN RD INTERSECTION			
H.S. THERMO			
	COLOR	LENGTH (LF)	DESCRIPTION
5"	WHITE	5,200	
	YELLOW	9,600	
	<b>TOTAL</b>	<b>14,800</b>	
6"	WHITE	1,300	
THERMO			
	COLOR	LENGTH (LF)	DESCRIPTION
8"	WHITE	170	
12"	WHITE	240	
	YELLOW	650	
	<b>TOTAL</b>	<b>890</b>	
24"	WHITE	30	
		<b>AREA (SQ FT)</b>	
L&S	WHITE	125	TURN ARROWS

SCHUYLER			
US 67 / IL 103			
INTERSECTION OF US 67 AND IL 103 NW OF BEARDSTOWN			
H.S. THERMO			
	COLOR	LENGTH (LF)	DESCRIPTION
5"	WHITE	1,500	
	YELLOW	2,700	
	<b>TOTAL</b>	<b>4,200</b>	
6"	WHITE	300	
THERMO			
	COLOR	LENGTH (LF)	DESCRIPTION
8"	WHITE	1,000	ISLANDS
12"	WHITE	400	
	YELLOW	250	
	<b>TOTAL</b>	<b>650</b>	
		<b>AREA (SQ FT)</b>	
L&S	WHITE	57	STOP AHEAD

SCHUYLER			
US 67 / IL 101			
INT OF US 67 / IL 101 EAST OF LITTLETON			
H.S. THERMO			
	COLOR	LENGTH (LF)	DESCRIPTION
5"	WHITE	5,900	
	YELLOW	9,600	
	<b>TOTAL</b>	<b>15,500</b>	
6"	WHITE	300	
THERMO			
	COLOR	LENGTH (LF)	DESCRIPTION
8"	WHITE	100	
12"	WHITE	800	
		<b>AREA (SQ FT)</b>	
L&S	WHITE	47	TURN ARROWS

SCHUYLER			
US 67			
4 WAY STOPLIGHT IN RUSHVILLE, US 24/US 67			
H.S. THERMO			
	COLOR	LENGTH (LF)	DESCRIPTION
5"	WHITE	5,200	
	YELLOW	8,900	
	<b>TOTAL</b>	<b>14,100</b>	
6"	WHITE	2,360	
THERMO			
	COLOR	LENGTH (LF)	DESCRIPTION
8"	WHITE	300	
12"	WHITE	1000	
	YELLOW	180	
	<b>TOTAL</b>	<b>1180</b>	
24"	WHITE	60	
		<b>AREA (SQ FT)</b>	
L&S	WHITE	328	TURN ARROWS
	WHITE	57	STOP AHEAD
<b>TOTAL</b>		<b>385</b>	

SCHUYLER			
US 67			
SUGAR GROVE RD TO 1000 FT N OF BARTLOW SPURS S OF RUSHVILLE			
H.S. THERMO			
	COLOR	LENGTH (LF)	DESCRIPTION
5"	WHITE	4,700	
	YELLOW	8,000	
	<b>TOTAL</b>	<b>12,700</b>	
6"	WHITE	600	
THERMO			
	COLOR	LENGTH (LF)	DESCRIPTION
8"	WHITE	300	
12"	WHITE	680	
24"	WHITE	30	
		<b>AREA (SQ FT)</b>	
L&S	WHITE	110	TURN ARROWS

SCHUYLER			
US 24 / IL 103			
INTERSECTION OF US 24 AND IL 103 NE OF RIPLEY			
H.S. THERMO			
	COLOR	LENGTH (LF)	DESCRIPTION
5"	WHITE	7,600	
	YELLOW	8,400	
	<b>TOTAL</b>	<b>16,000</b>	
6"	WHITE	400	
THERMO			
	COLOR	LENGTH (LF)	DESCRIPTION
8"	WHITE	400	
12"	WHITE	250	
24"	WHITE	30	
		<b>AREA (SQ FT)</b>	
L&S	WHITE	32	TURN ARROWS

SCHUYLER			
IL 101 / IL 99			
INT OF IL 99 / IL 101 NORTH OF CAMDEN			
H.S. THERMO			
	COLOR	LENGTH (LF)	DESCRIPTION
5"	WHITE	800	
	YELLOW	900	
	<b>TOTAL</b>	<b>1,700</b>	
THERMO			
	COLOR	LENGTH (LF)	DESCRIPTION
12"	WHITE	60	
24"	WHITE	40	

SCHUYLER COUNTY			
IL 101 (E OF AUGUSTA)			
WEINBERG-KING STATE PARK INTERSECTION			
THERMO			
	COLOR	LENGTH (LF)	DESCRIPTION
24"	WHITE	15	STOP-BAR

SCHUYLER			
US 24			
S CEDAR ST TO S CONGRESS ST IN RUSHVILLE			
THERMOPLASTIC			
	COLOR	LENGTH (LF)	DESCRIPTION
6"	WHITE	1,113	
24"	WHITE	62	

SCHUYLER COUNTY			
US 24			
NORTH OF CLINTON ST TO SCRIPPS ST (RUSHVILLE)			
H.S. THERMO			
	COLOR	LENGTH (LF)	DESCRIPTION
5"	WHITE	7,000	EDGE LINE
	YELLOW	650	CENTER LINE
	YELLOW	900	SKIP DASH
	<b>TOTAL</b>	<b>8,550</b>	
THERMO			
	COLOR	LENGTH (LF)	DESCRIPTION
6"	WHITE	1,260	CROSSWALK
	WHITE	180	PARKING LANE CHEVRONS
<b>TOTAL</b>		<b>1,440</b>	
12"	WHITE	534	PIANO BARS
24"	WHITE	32	STOP BARS

\*PAVEMENT MARKING REMOVAL GRINDING TO BE DETERMINED BY THE ENGINEER ON AN AS NEEDED BASIS

\*D-6 HT PVMNT MRK RPR 22-17

FILE NAME = S:\CONTRMAINT_CAD\46581 D6 HT PVMNT MRK	USER NAME = SHARPTD	DESIGNED -	REVISED -	<b>STATE OF ILLINOIS DEPARTMENT OF TRANSPORTATION</b>	<b>LOCATIONS SCHUYLER</b>	RTE.	SECTION	COUNTY	TOTAL SHEETS	SHEET NO.	
Default	RPR FY22 (West)\West Plans\sh-4-Locations	DRAWN -	REVISED -			VAR.	*	VARIOUS	8	6	
	PLOT SCALE = 2.0000' / in.	CHECKED -	REVISED -			CONTRACT NO. 46581					
	PLOT DATE = 3/25/2021	DATE -	REVISED -			SCALE:	SHEET	OF	SHEETS	STA.	TO

ILLINOIS FED. AID PROJECT

MORGAN COUNTY			
US67/IL 104			
900' S of MP. 24 to BJ at DEPPE RD.			
H.S. THERMO			
	COLOR	LENGTH(LF)	DESCRIPTION
5"	WHITE	27,975	
	YELLOW	16,113	
	<b>TOTAL</b>	<b>44,088</b>	
6"	WHITE	1550	
THERMO			
	COLOR	LENGTH(LF)	DESCRIPTION
8"	WHITE	140	ISLAND
24"	WHITE	36	STOP BARS
		<b>AREA (SQ FT)</b>	
L&S	WHITE	94	TURN ARROW

MORGAN COUNTY			
US67 BR/IL 104			
MORTON AVE. To IL 104/78 INT.			
H.S. THERMO			
	COLOR	LENGTH(LF)	DESCRIPTION
5"	WHITE	21,450	
	YELLOW	29,000	
	<b>TOTAL</b>	<b>50,450</b>	
6"	WHITE	4,625	TURN LANE
THERMO			
	COLOR	LENGTH(LF)	DESCRIPTION
8"	WHITE	140	
12"	WHITE	650	
24"	WHITE	200	STOP BARS
		<b>AREA (SQ FT)</b>	
L&S	WHITE	94	TURN ARROW

MORGAN COUNTY			
JACKSONVILLE OLD US 36			
BJ 400' E of MOUND RD. to BJ at JONES LN.			
MODIFIED URETHANE			
	COLOR	LENGTH(LF)	DESCRIPTION
5"	WHITE	7,300	
	YELLOW	7,500	
	<b>TOTAL</b>	<b>14,800</b>	
8"	WHITE	140	
12"	WHITE	95	
24"	WHITE	28	STOP BARS
		<b>AREA (SQ FT)</b>	
L&S	WHITE	172	TURN ARROW

MORGAN COUNTY			
WOODSON IL 267			
BJ 625' N of INT. 67/MAIN ST. to BJ 375' S of INT. 67/MAIN ST.			
H.S. THERMO			
	COLOR	LENGTH(LF)	DESCRIPTION
5"	WHITE	2,200	
	YELLOW	4,170	
	<b>TOTAL</b>	<b>6,370</b>	
6"	WHITE	125	
THERMO			
	COLOR	LENGTH(LF)	DESCRIPTION
8"	WHITE	190	
12"	WHITE	185	
24"	WHITE	29	STOP BARS
		<b>AREA (SQ FT)</b>	
L&S	WHITE	63	TURN ARROW

MORGAN COUNTY			
US 67 / US 267			
MICHIGAN AVE INT. TO 185 FT FROM MORTON AVE AT BUTT JT			
H.S. THERMO			
	COLOR	LENGTH (LF)	DESCRIPTION
5"	WHITE	1,080	
	WHITE	5,080	
	YELLOW	5,080	
	YELLOW	360	
<b>TOTAL</b>	<b>11,600</b>		
6"	WHITE	300	
THERMO			
	COLOR	LENGTH (LF)	DESCRIPTION
24"	WHITE	36	STOP BARS
		<b>AREA (SQ FT)</b>	
L&S	WHITE	219	TURN ARROWS

MORGAN COUNTY			
US67			
285' from MP 11/MORTON AVE. to 1290' N of GRAVEL SPRINGS RD.			
INCL. NB 67 MORTON AVE. ON and OFF RAMPS			
MODIFIED URETHANE			
	COLOR	LENGTH(LF)	DESCRIPTION
5"	WHITE	17,125	
	YELLOW	18,075	
	YELLOW	4,000	SKIPS
	<b>TOTAL</b>	<b>39,200</b>	
8"	WHITE	1550	GOES
12"	WHITE	150	
24"	WHITE	36	STOP BARS
		<b>AREA (SQ FT)</b>	
L&S	WHITE	32	TURN ARROW
	WHITE	49	WRONG WAY ARROW
<b>TOTAL</b>		<b>81</b>	

MORGAN COUNTY			
JACKSONVILLE US67/MAIN ST.			
SOUTHBROOKE RD. INT to MICHIGAN AVE. INT.			
H.S. THERMO			
	COLOR	LENGTH(LF)	DESCRIPTION
5"	WHITE	9,250	
	YELLOW	16,820	
	<b>TOTAL</b>	<b>26,070</b>	
6"	WHITE	725	STORAGE LINES
THERMO			
	COLOR	LENGTH(LF)	DESCRIPTION
6"	WHITE	1000	CROSSWALKS
24"	WHITE	182	STOP BARS
		<b>AREA (SQ FT)</b>	
L&S	WHITE	1139	TURN ARROW

MORGAN COUNTY			
US 67			
BUTT JOINT AT DEPPE RD TO 900' S OF M.M.24			
H.S. THERMO			
	COLOR	LENGTH (LF)	DESCRIPTION
5"	WHITE	29,300	
	YELLOW	16,113	
	<b>TOTAL</b>	<b>45,413</b>	
6"	WHITE	1,550	
THERMO			
	COLOR	LENGTH (LF)	DESCRIPTION
24"	WHITE	36	STOP BARS
		<b>AREA (SQ FT)</b>	
L&S	WHITE	94	TURN ARROW
	WHITE	83	LANE DROP ARROW
<b>TOTAL</b>		<b>177</b>	

MORGAN COUNTY			
US 72/US 67			
END OF RAMP OFF 72 TO START MORTON AVE EXIT			
MODIFIED URETHANE			
	COLOR	LENGTH (LF)	DESCRIPTION
5"	WHITE	20,500	EDGE LINE
	YELLOW	20,500	EDGE LINE
	WHITE	5,125	CENTER STRIPE
<b>TOTAL</b>	<b>46,125</b>		

MORGAN COUNTY			
JACKSONVILLE MOUND RD.			
INT. of MORTON and MOUND to BRIDGE over RT. 104			
H.S. THERMO			
	COLOR	LENGTH(LF)	DESCRIPTION
5"	WHITE	9,900	
	YELLOW	1,250	
	<b>TOTAL</b>	<b>11,150</b>	
THERMO			
	COLOR	LENGTH(LF)	DESCRIPTION
24"	WHITE	20	STOP BARS

MORGAN COUNTY			
US 267			
BRIDGE #069-0504 TO 175 FT S OF WOODS LN (SOUTH FR RD)			
H.S. THERMO			
	COLOR	LENGTH (LF)	DESCRIPTION
5"	WHITE	39,060	
	YELLOW	5,100	
	<b>TOTAL</b>	<b>44,160</b>	
6"	WHITE	225	
THERMO			
	COLOR	LENGTH (LF)	DESCRIPTION
12"	YELLOW	100	
		<b>AREA (SQ FT)</b>	
L&S	WHITE	32	TURN ARROWS

MORGAN COUNTY			
US 67			
IL 104 OVERPASS TO US 72 OVERPASS			
M. URETH.			
	COLOR	LENGTH (LF)	DESCRIPTION
5"	WHITE	10,250	
	WHITE	2,575	CENTER STRIPE
	YELLOW	10,250	
<b>TOTAL</b>	<b>23,075</b>		

\*PAVEMENT MARKING REMOVAL GRINDING TO BE DETERMINED BY THE ENGINEER ON AN AS NEEDED BASIS

\*D-6 HT PVMNT MRK RPR 22-17

FILE NAME =	USER NAME = SHARPTD	DESIGNED -	REVISED -	<b>STATE OF ILLINOIS DEPARTMENT OF TRANSPORTATION</b>	<b>LOCATIONS MORGAN COUNTY (1 of 2)</b>			RTE.	SECTION	COUNTY	TOTAL SHEETS	SHEET NO.
S:\CONTRMAINT_CAD\46581 D6 HT PVMNT MRK	RPR FY22 (West)\West Plans\sh-4-Locations.d	DRAWN -	REVISED -					VAR.	*	VARIOUS	8	7
Default	PLOT SCALE = 2.0000' / in.	CHECKED -	REVISED -		SCALE: SHEET OF SHEETS STA. TO STA.			CONTRACT NO. 46581				
	PLOT DATE = 3/25/2021	DATE -	REVISED -		ILLINOIS FED. AID PROJECT							

MORGAN COUNTY			
US 67/IL 104			
M.M. 17 TO 900' S OF M.M. 24			
MODIFIED URETHANE			
	COLOR	LENGTH (LF)	DESCRIPTION
5"	WHITE	74,280	
	WHITE	9,150	CONCORD EXIT RAMP
	YELLOW	80,050	
	YELLOW	5,025	CONCORD EXIT RAMP
	<b>TOTAL</b>	<b>168,505</b>	
6"	WHITE	9,830	
	WHITE	710	SKIPS
	<b>TOTAL</b>	<b>10,540</b>	
8"	YELLOW	1,300	
	WHITE	2,000	
	WHITE	4,400	CONCORD EXIT RAMP
	<b>TOTAL</b>	<b>7,700</b>	
12"	WHITE	790	
	YELLOW	1,650	
	WHITE	550	CONCORD EXIT RAMP
	<b>TOTAL</b>	<b>2,990</b>	
24"	WHITE	292	STOP BARS
	WHITE	72	STOP BARS CONCORD EXIT RAMP
	<b>TOTAL</b>	<b>364</b>	
		<b>AREA (SQ FT)</b>	
L&S	WHITE	1,498	TURN ARROWS
	WHITE	97	ARROWS CONCORD EXIT RAMP
	WHITE	233	YIELD
	<b>TOTAL</b>	<b>1,828</b>	

MORGAN COUNTY			
US 72 / US 36			
MORGAN/SANGAMON CO LINE TO BUTT JT NEAR M.M. 72			
MODIFIED URETHANE			
	COLOR	LENGTH (LF)	DESCRIPTION
5"	WHITE	70,550	
	YELLOW	74,125	
	WHITE	9,300	EXIT 76
	YELLOW	5,600	EXIT 76
	WHITE	144	SKIP DASH EXIT 76
	WHITE	18,550	CENTER STRIPE
	<b>TOTAL</b>	<b>178,269</b>	
8"	WHITE	3,325	GORE EXIT 76
12"	WHITE	275	CHEVRON EXIT 76
24"	WHITE	36	EXIT 76
		<b>AREA (SQ FT)</b>	
L&S	WHITE	98	ARROWS WRONG WAY EXIT 76

MORGAN COUNTY			
US 67/IL 104			
M.M 17 TO M.M. 14			
MODIFIED URETHANE			
	COLOR	LENGTH (LF)	DESCRIPTION
5"	WHITE	31,250	
	WHITE	3,550	SKIPS
	YELLOW	30,525	
	<b>TOTAL</b>	<b>65,325</b>	
6"	WHITE	4,225	
	WHITE	590	SKIPS
	<b>TOTAL</b>	<b>4,815</b>	
8"	WHITE	1,700	
12"	WHITE	750	
24"	WHITE	59	STOP BARS
		<b>AREA (SQ FT)</b>	
L&S	WHITE	593	TURN ARROWS
	WHITE	142	YIELD
	<b>TOTAL</b>	<b>735</b>	

MORGAN COUNTY			
US 67			
M.M. 11/MORTON AVE EXIT TO 1300' N OF GRAVL SPRINGS RD INT.			
MODIFIED URETHANE			
	COLOR	LENGTH (LF)	DESCRIPTION
5"	WHITE	22,975	EDGE LINE
	YELLOW	27,850	EDGE LINE
	WHITE	6,975	CENTER STRIPE
	WHITE	4,125	EDGE LINE, MORTON RAMPS
	YELLOW	2,100	EDGE LINE, MORTON RAMPS
	<b>TOTAL</b>	<b>64,025</b>	
8"	WHITE	1,550	GORE, MORTON RAMPS
12"	WHITE	150	CHEVRONS, MORTON RAMPS
24"	WHITE	36	MORTON RAMPS STOP BARS
		<b>AREA (SQ FT)</b>	
L&S	WHITE	49	WRONG WAY, MORTON RAMPS
	WHITE	31	TURN, MORTON RAMPS
	<b>TOTAL</b>	<b>80</b>	

MORGAN COUNTY			
US 67/IL 104			
M.M 14 TO M.M. 11 & IL 104 RAMPS			
MODIFIED URETHANE			
	COLOR	LENGTH (LF)	DESCRIPTION
5"	WHITE	9,975	SB
	WHITE	2,975	SKIPS
	YELLOW	11,875	SB
	WHITE	13,000	NB
	WHITE	4,000	SKIPS
	YELLOW	15,975	NB
	WHITE	6,075	SB 67 TO 104 OFF RAMP
	YELLOW	6,325	SB 67 TO 104 OFF RAMP
	WHITE	3,175	WB 104 TO 67 RAMP
	YELLOW	1,300	WB 104 TO 67 RAMP
	WHITE	6,125	SB 67 LOOP RAMP
	YELLOW	6,100	SB 67 LOOP RAMP
	WHITE	2,700	NB 67 TO 104 RAMP
	YELLOW	1,200	NB 67 TO 104 RAMP
	<b>TOTAL</b>	<b>90,800</b>	
6"	WHITE	60	STORAGE SB 104 RAMP
8"	WHITE	825	SB 104 GORE
WHITE	2,050	WB 104 GORE/NB 67 GORE	
WHITE	925	SB 67 LOOP GORE	
WHITE	1,800	NB 67 TO 104 GORE	
<b>TOTAL</b>	<b>5,600</b>		
		<b>AREA (SQ FT)</b>	
L&S	WHITE	32	TURN ARROWS

MORGAN COUNTY			
IL 78/WALNUT ST.			
INT. of N MAIN ST. to INT. of 78 and 104			
H.S. THERMO			
	COLOR	LENGTH(LF)	DESCRIPTION
5"	WHITE	13,300	
	YELLOW	40,000	
	<b>TOTAL</b>	<b>53,300</b>	
6"	WHITE	1,000	TURN LANE
		<b>AREA (SQ FT)</b>	
		<b>AREA (SQ FT)</b>	
		<b>AREA (SQ FT)</b>	
6"	WHITE	1,000	CROSSWALKS
8"	WHITE	135	
12"	WHITE	50	
24"	WHITE	400	STOP BARS
		<b>AREA (SQ FT)</b>	
L&S	WHITE	1545	TURN ARROW

MORGAN COUNTY			
US 67			
MORGAN/SCOTT CO. LINE TO END OF CONCRETE BEFORE 72			
MODIFIED URETHANE			
	COLOR	LENGTH (LF)	DESCRIPTION
5"	WHITE	177,100	EDGE
	YELLOW	177,100	EDGE
	<b>TOTAL</b>	<b>354,200</b>	
6"	WHITE	6,750	STORAGE
8"	WHITE	4,375	GORE
12"	WHITE	1,025	CHEVRON
24"	WHITE	84	STOP BARS
		<b>AREA (SQ FT)</b>	
L&S	WHITE	1,170	TURN ARROWS
	WHITE	327	YIELD LETTERS
	<b>TOTAL</b>	<b>1,497</b>	

MORGAN COUNTY			
IL 104			
INTERSECTION IL 104/IL 78 TO BUTT JOINT ON OLD US 67			
H.S. THERMO			
	COLOR	LENGTH (LF)	DESCRIPTION
5"	WHITE	4,150	
	WHITE	400	SKIP DASH
	YELLOW	10,250	
	<b>TOTAL</b>	<b>14,800</b>	
6"	WHITE	400	STORAGE
		<b>AREA (SQ FT)</b>	
		<b>AREA (SQ FT)</b>	
		<b>AREA (SQ FT)</b>	
12"	WHITE	625	
L&S	WHITE	110	TURN ARROWS

MORGAN COUNTY			
IL 104 (WAVERLY)			
WAVERLY TOWNSHIP LINE TO PEARL ST			
H.S. THERMO			
	COLOR	LENGTH (LF)	DESCRIPTION
5"	WHITE	6,600	EDGE LINE
	YELLOW	850	SKIP DASH
	<b>TOTAL</b>	<b>7,450</b>	
		<b>AREA (SQ FT)</b>	
		<b>AREA (SQ FT)</b>	
		<b>AREA (SQ FT)</b>	
6"	WHITE	380	CROSSWALK
12"	WHITE	84	PIANO BARS
24"	WHITE	66	STOP BARS

\*PAVEMENT MARKING REMOVAL GRINDING TO BE DETERMINED BY THE ENGINEER ON AN AS NEEDED BASIS

\*D-6 HT PVMNT MRK RPR 22-17

MODEL: D:\p\h\l... FILE NAME: S:\CONTRACT\CA046581.DWG... DATE: 3/25/2021

USER NAME = SHARPTD	DESIGNED -	REVISED -
PLOT SCALE = 2.0000' / in.	DRAWN -	REVISED -
PLOT DATE = 3/25/2021	CHECKED -	REVISED -
	DATE -	REVISED -

**STATE OF ILLINOIS  
DEPARTMENT OF TRANSPORTATION**

**LOCATIONS  
MORGAN COUNTY (2 of 2)**

SCALE: SHEET OF SHEETS STA. TO STA.

F.A. RTE.	SECTION	COUNTY	TOTAL SHEETS	SHEET NO.
	*	VARIOUS	8	8
			CONTRACT NO. 46581	
		ILLINOIS	FED. AID PROJECT	