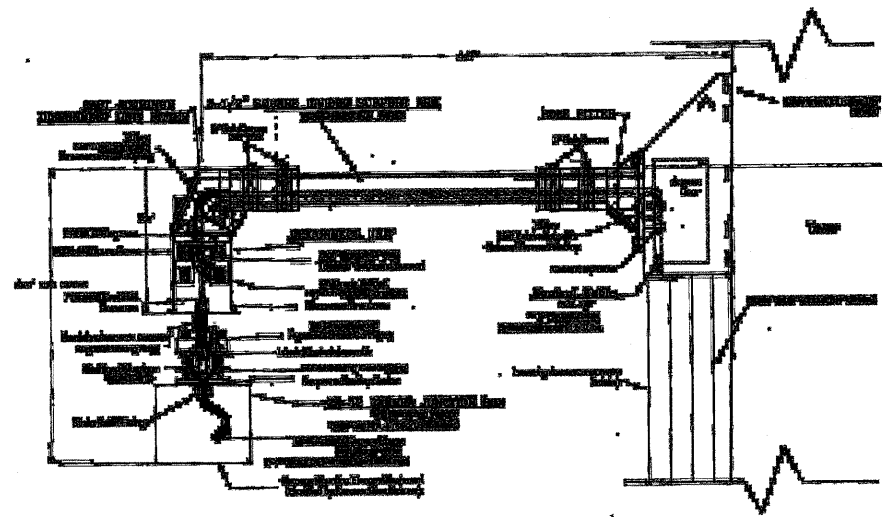
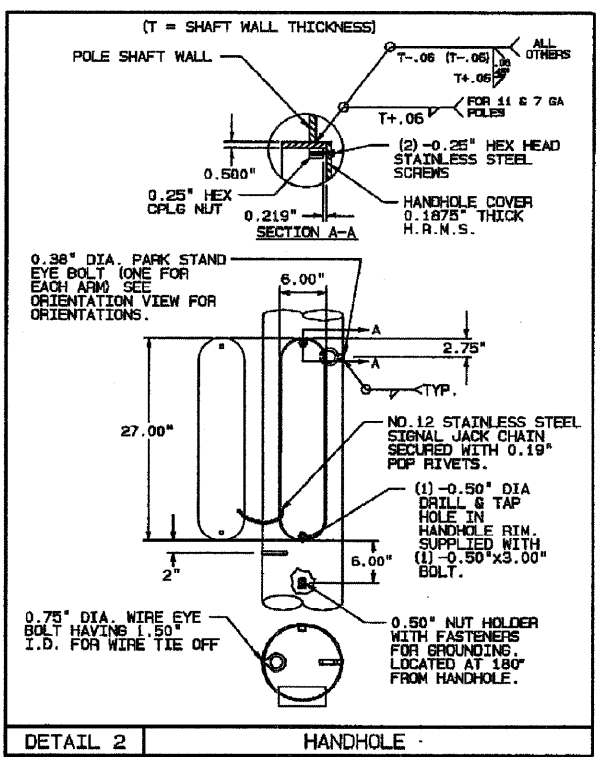
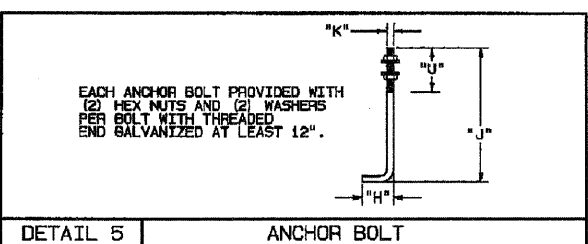
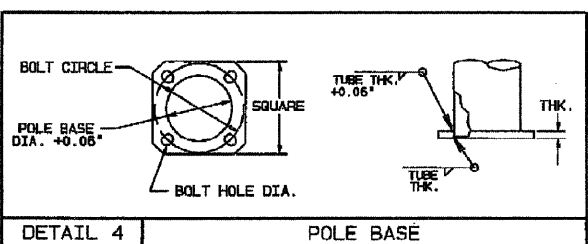
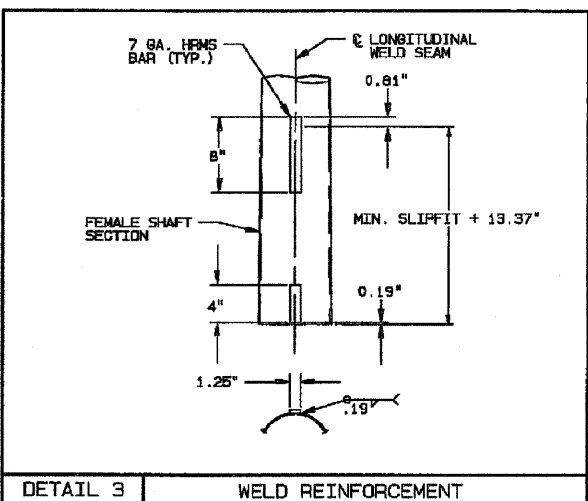
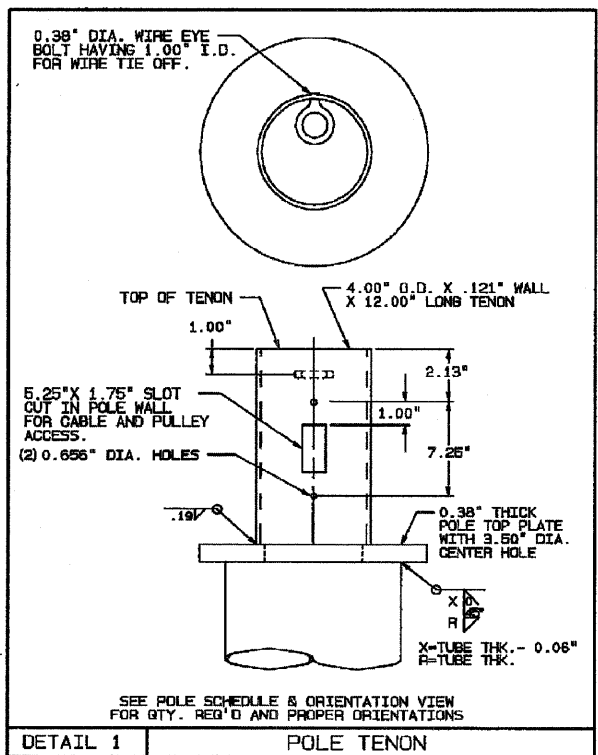
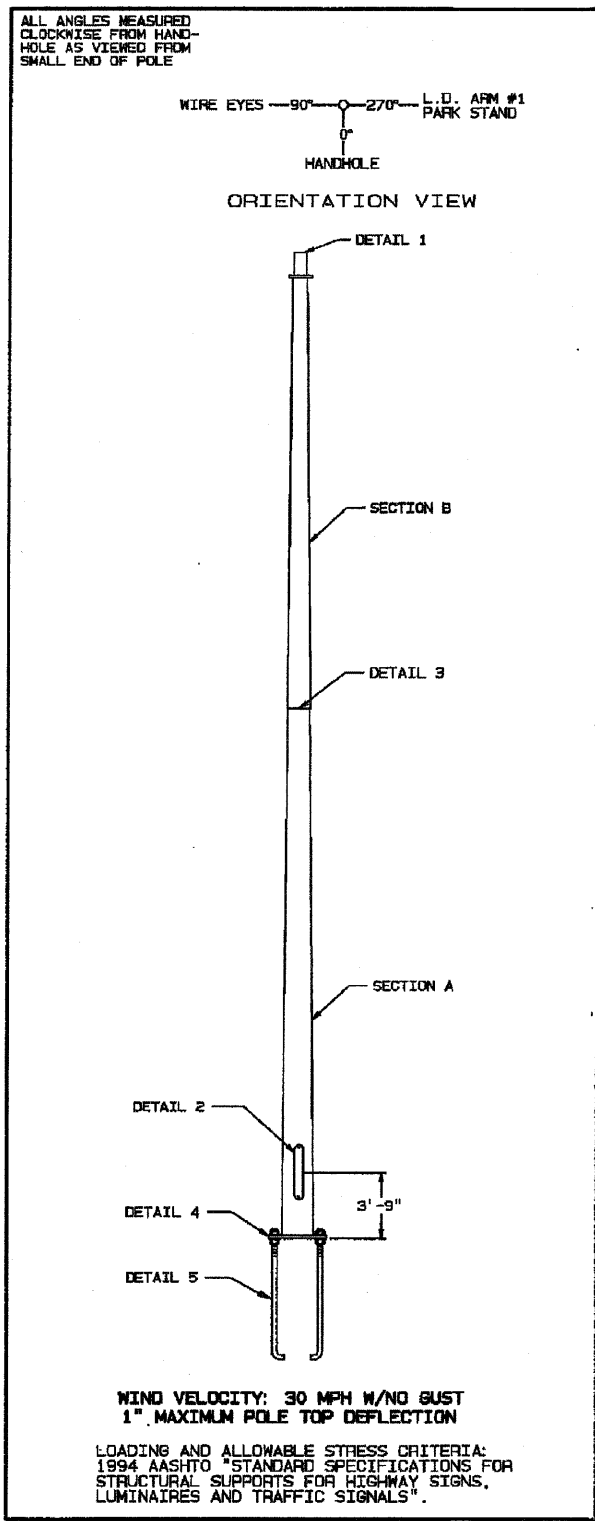


POLE DATA																			
ITEM NO.	QTY.	DESIGNATION EPA/WT.	POLE HEIGHT (FT)	NO. L.D. ARMS REQD	TUBE					POLE BASE			ANCHOR BOLT						
					SECTION	BASE DIAMETER (IN)	TOP DIAMETER (IN)	LENGTH (FT)	GAUGE OR THICK (IN)	MINIMUM SLIP LENGTH (IN)	SQUARE (IN)	BOLT CIRCLE DIAMETER (IN)	BOLT HOLE DIAMETER (IN)	DIAMETER (IN)	LENGTH (IN)	HOOK L <sub>1</sub> (IN)	THREAD LENGTH (IN)	NUMBER REQ'D	
13		MG2ITS80-1 (GV) 2.8/120 (MAX)	80.00	1	A	25.00	19.13	41.96	0.250	N/A	31.00	30.00	1.50	2.00	1.75	84.00	6.00	8.00	4
					B	20.00	14.17	41.61	0.188	29.44									

MATERIAL DATA		
COMPONENT	ASTM DESIGNATION	MIN. YIELD (KSI)
POLE SHAFT - ALL OTHERS	A572 GR. 50	50
POLE SHAFT - 7 & 11 GAUGE	A572 GR. A	50
BASE PLATE	A36	36
POLE TOP PLATE	A36	36
TENON - C.D.S. TUBING		42
ANCHOR BOLTS	F1554 GR. 55	55
GALVANIZING - STRUCTURE	A123	
GALVANIZING - HARDWARE	A153	



FILE NAME	USER NAME	DESIGNED	REVISED
		DRAWN	REVISED
		CHECKED	REVISED
		DATE	REVISED

STATE OF ILLINOIS  
DEPARTMENT OF TRANSPORTATION

CCTV CAMERA EXPANSION - FAI 55 (US 6 TO I-294)  
CCTV CAMERA STRUCTURE, 80 FT M.H., GALVANIZED STEEL

SCALE: NONE SHEET NO. OF SHEETS STA. TO STA.

F.A. RTE.	SECTION	COUNTY	TOTAL SHEETS	SHEET NO.
FAI55	2007-0821	*	74	65
CONTRACT NO. 60E01				
ILLINOIS FED. AID PROJECT				

E60

\* COOK, DUPAGE, WILL