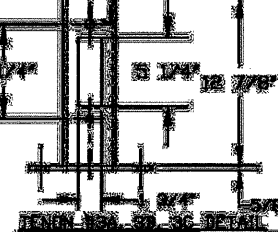
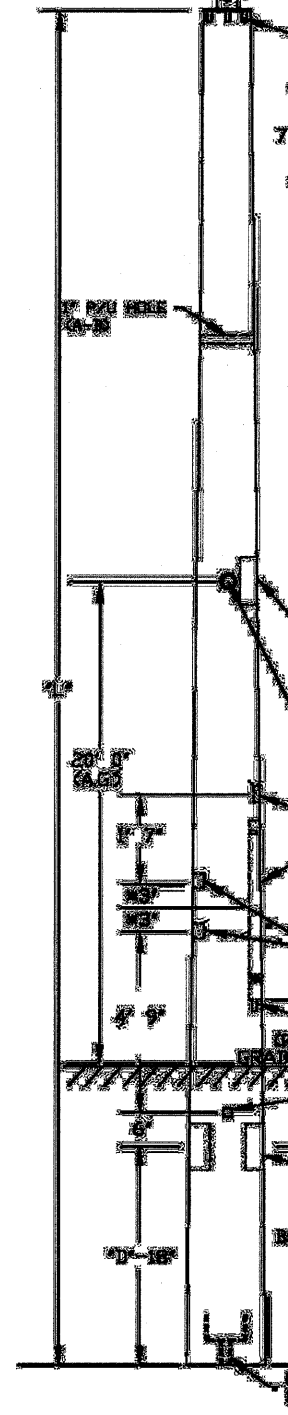


TOP DIA: 4" SEE CHART

NOTE: HORN INSIDE  
RAIL RAILWAY TO BE  
5" DIA.

NOTE: HORN TO BE 4" DIA.  
HORN TO BE 4" DIA.  
HORN TO BE 4" DIA.

NOTE: HORN TO BE 4" DIA.  
HORN TO BE 4" DIA.



REV.	DESCRIPTION	DATE	BY
1	ISSUED FOR PERMIT	11/10/01	...
2	REVISED TO SHOW ACTUAL DEFLECTION	1/10/02	...
3	REVISED HORN PLATE THICKNESS	1/10/02	...
4	ADDED HORN PLATE THICKNESS	1/10/02	...

**SPECIFICATIONS**

NOTE: HORN TO BE 4" DIA.  
HORN TO BE 4" DIA.  
HORN TO BE 4" DIA.

NOTE: HORN TO BE 4" DIA.  
HORN TO BE 4" DIA.

ITEM NO.	QTY	UNIT	DESCRIPTION	DEFLECTION	ST. NO.	ST. NO.	ST. NO.
1	1	EA	...	...	...	...	...
2	1	EA	...	...	...	...	...
3	1	EA	...	...	...	...	...
4	1	EA	...	...	...	...	...
5	1	EA	...	...	...	...	...
6	1	EA	...	...	...	...	...
7	1	EA	...	...	...	...	...
8	1	EA	...	...	...	...	...
9	1	EA	...	...	...	...	...
10	1	EA	...	...	...	...	...
11	1	EA	...	...	...	...	...
12	1	EA	...	...	...	...	...
13	1	EA	...	...	...	...	...
14	1	EA	...	...	...	...	...
15	1	EA	...	...	...	...	...
16	1	EA	...	...	...	...	...
17	1	EA	...	...	...	...	...
18	1	EA	...	...	...	...	...
19	1	EA	...	...	...	...	...
20	1	EA	...	...	...	...	...
21	1	EA	...	...	...	...	...
22	1	EA	...	...	...	...	...
23	1	EA	...	...	...	...	...
24	1	EA	...	...	...	...	...
25	1	EA	...	...	...	...	...
26	1	EA	...	...	...	...	...
27	1	EA	...	...	...	...	...
28	1	EA	...	...	...	...	...
29	1	EA	...	...	...	...	...
30	1	EA	...	...	...	...	...
31	1	EA	...	...	...	...	...
32	1	EA	...	...	...	...	...
33	1	EA	...	...	...	...	...
34	1	EA	...	...	...	...	...
35	1	EA	...	...	...	...	...
36	1	EA	...	...	...	...	...
37	1	EA	...	...	...	...	...
38	1	EA	...	...	...	...	...
39	1	EA	...	...	...	...	...
40	1	EA	...	...	...	...	...
41	1	EA	...	...	...	...	...
42	1	EA	...	...	...	...	...
43	1	EA	...	...	...	...	...
44	1	EA	...	...	...	...	...
45	1	EA	...	...	...	...	...
46	1	EA	...	...	...	...	...
47	1	EA	...	...	...	...	...
48	1	EA	...	...	...	...	...
49	1	EA	...	...	...	...	...
50	1	EA	...	...	...	...	...

NOTE: HORN TO BE 4" DIA.  
HORN TO BE 4" DIA.

NOTE: HORN TO BE 4" DIA.  
HORN TO BE 4" DIA.

NOTE: HORN TO BE 4" DIA.  
HORN TO BE 4" DIA.

NOTE: HORN TO BE 4" DIA.  
HORN TO BE 4" DIA.

NOTE: HORN TO BE 4" DIA.  
HORN TO BE 4" DIA.

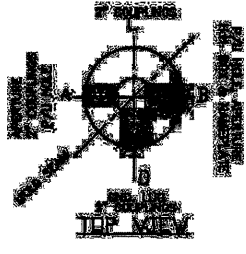
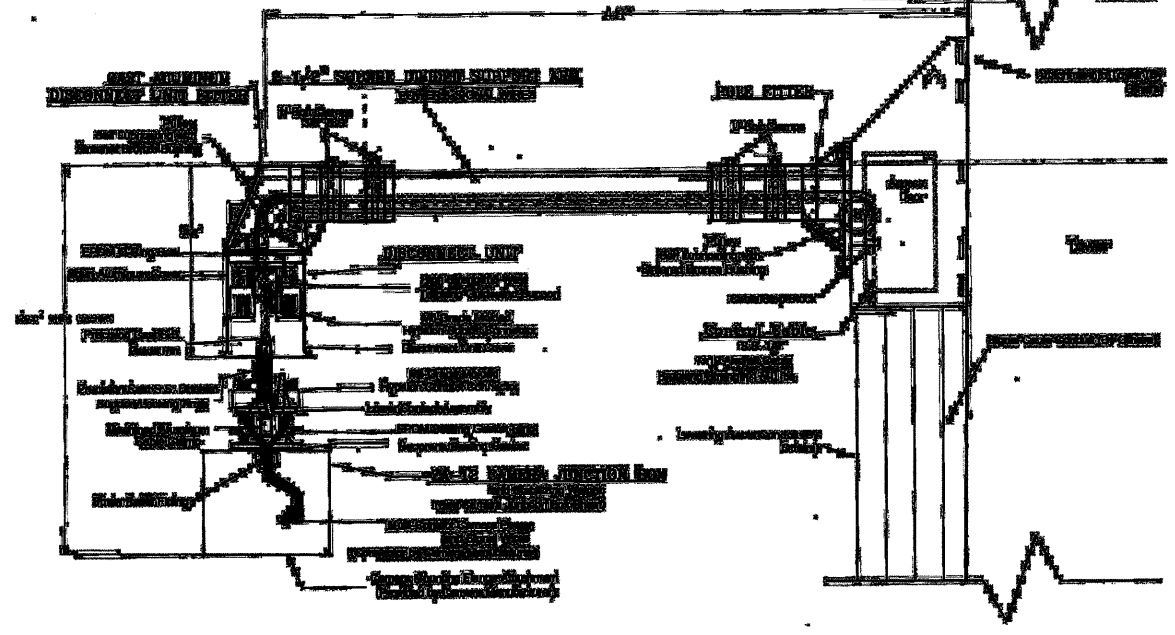
NOTE: HORN TO BE 4" DIA.  
HORN TO BE 4" DIA.

NOTE: HORN TO BE 4" DIA.  
HORN TO BE 4" DIA.

NOTE: HORN TO BE 4" DIA.  
HORN TO BE 4" DIA.

NOTE: HORN TO BE 4" DIA.  
HORN TO BE 4" DIA.

NOTE: HORN TO BE 4" DIA.  
HORN TO BE 4" DIA.



FILE NAME	USER NAME	DESIGNED	REVISED
		DRAWN	REVISED
		CHECKED	REVISED
		DATE	REVISED

STATE OF ILLINOIS  
DEPARTMENT OF TRANSPORTATION

CCTV CAMERA EXPANSION - FAI 55 (US 6 TO I-294)  
CCTV CAMERA STRUCTURE, 80 FT M.H., CONCRETE

SCALE: NONE SHEET NO. \_\_\_ OF \_\_\_ SHEETS STA. \_\_\_ TO STA. \_\_\_

F.A. RTE.	SECTION	COUNTY	TOTAL SHEETS	SHEET NO.
FAI55	2007-0621		74	66
ILLINOIS FED. AID PROJECT			CONTRACT NO. 60E01	

\* COOK, DUPAGE, WILL