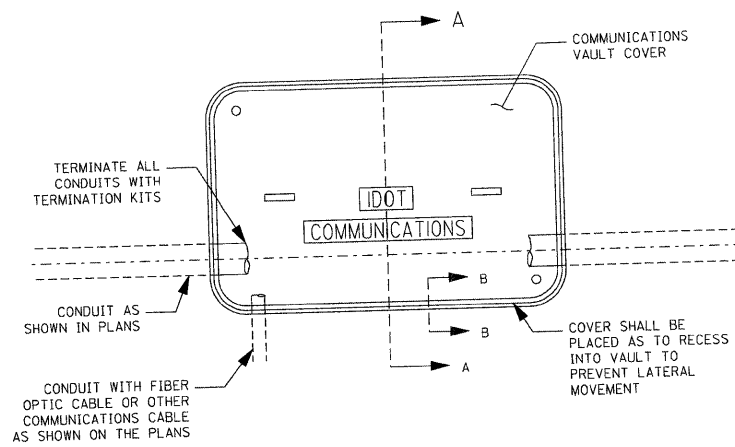
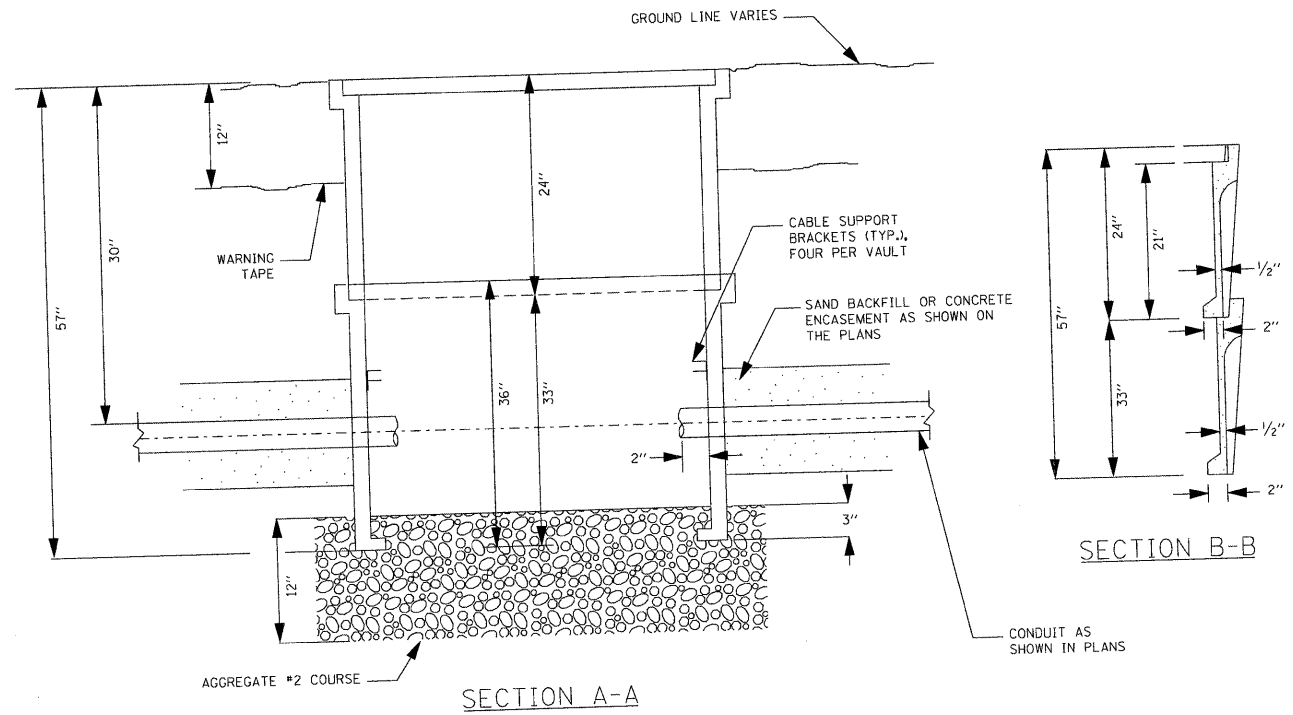


ISOMETRIC



NOTES:

1. BOX SHALL HAVE AN OPEN BASE.
2. COVER SHALL WITHSTAND AASHTO H 20 LOADING AND SHALL LOCK.
3. ALL OPENINGS IN STRUCTURE MUST BE MACHINED AT TIME OF FABRICATION OR PUNCH DRIVEN AT TIME OF PLACEMENT.
4. FIELD PLACEMENT OF COMMUNICATIONS VAULT SHALL BE AS DIRECTED BY THE ENGINEER.

FILE NAME =	USER NAME = tomsonsr	DESIGNED -	REVISED -	STATE OF ILLINOIS DEPARTMENT OF TRANSPORTATION	HANDHOLE, COMPOSITE CONCRETE				F.A. RTE.	SECTION	COUNTY	TOTAL SHEETS	SHEET NO.
c:\pwwork\p\WIDOT\TOMSONSR\0127928\5908-light.dgn	PLOT SCALE = 50.0000' / IN.	DRAWN -	REVISED -		55	2007-0621	*	74	70				
PLOT DATE = 3/17/2009	DATE -	CHECKED -	REVISED -		CONTRACT NO. 60E01				ILLINOIS FED. AID PROJECT				
		DATE -	REVISED -		SCALE:	SHEET NO.	OF SHEETS	STA.	TO STA.	*WILL, DUPAGE, COOK			