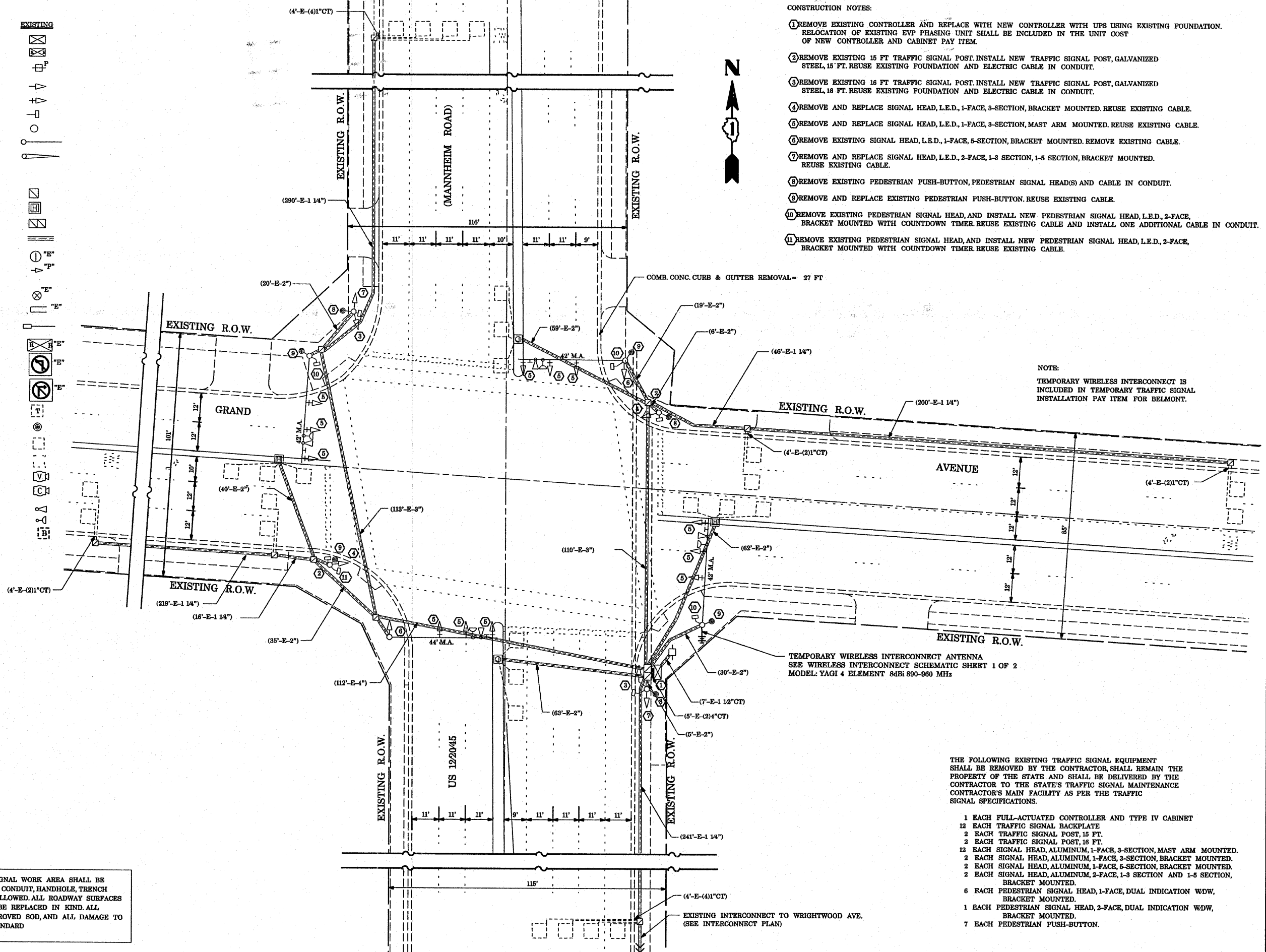


TRAFFIC SIGNAL LEGEND

	PROPOSED	EXISTING
CONTROLLER	[Symbol]	[Symbol]
RAILROAD CONTROL CABINET	[Symbol]	[Symbol]
SERVICE INSTALLATION, (P) POLE OR (G) GROUND MOUNTED	[Symbol]	[Symbol]
SIGNAL HEAD	[Symbol]	[Symbol]
SIGNAL HEAD WITH BACKPLATE	[Symbol]	[Symbol]
SIGNAL HEAD, PEDESTRIAN	[Symbol]	[Symbol]
SIGNAL POST	[Symbol]	[Symbol]
MAST ARM ASSEMBLY AND POLE, STEEL	[Symbol]	[Symbol]
MAST ARM ASSEMBLY AND POLE, ALUMINIUM	[Symbol]	[Symbol]
COMMON TRENCH	[Symbol]	[Symbol]
UNIT DUCT	[Symbol]	[Symbol]
HANDHOLE	[Symbol]	[Symbol]
HEAVY DUTY HANDHOLE	[Symbol]	[Symbol]
DOUBLE HANDHOLE	[Symbol]	[Symbol]
G.S.CONDUIT IN TRENCH OR PUSHED	[Symbol]	[Symbol]
CAST IRON JUNCTION BOX	[Symbol]	[Symbol]
SIGNAL HEAD OPTICALLY PROGRAMMED	[Symbol]	[Symbol]
CONDUIT SPLICE	[Symbol]	[Symbol]
WOOD POLE	[Symbol]	[Symbol]
RACEWAY FOR MAGNETIC DETECTOR, TYPE I OR TYPE II	[Symbol]	[Symbol]
VEHICLE DETECTOR, NON COMPENSATED MAGNETIC TYPE	[Symbol]	[Symbol]
RAILROAD CONTROL CABINET	[Symbol]	[Symbol]
ILLUMINATED SIGN, FIBER OPTIC "NO LEFT TURN"	[Symbol]	[Symbol]
ILLUMINATED SIGN, FIBER OPTIC "NO RIGHT TURN"	[Symbol]	[Symbol]
TELEPHONE CONNECTION	[Symbol]	[Symbol]
PEDESTRIAN PUSHBUTTON DETECTOR	[Symbol]	[Symbol]
DETECTOR LOOP, TYPE I	[Symbol]	[Symbol]
PREFORMED DETECTOR LOOP	[Symbol]	[Symbol]
VIDEO DETECTOR	[Symbol]	[Symbol]
CLOSED CIRCUIT TV	[Symbol]	[Symbol]
EMERGENCY VEHICLE SYSTEM DETECTOR	[Symbol]	[Symbol]
CONFIRMATION BEACON	[Symbol]	[Symbol]
UNINTERRUPTABLE POWER SUPPLY	[Symbol]	[Symbol]
WIRELESS INTERCONNECT (ANTENNA)	[Symbol]	[Symbol]



CONSTRUCTION NOTES:

- 1 REMOVE EXISTING CONTROLLER AND REPLACE WITH NEW CONTROLLER WITH UPS USING EXISTING FOUNDATION. RELOCATION OF EXISTING EVP PHASING UNIT SHALL BE INCLUDED IN THE UNIT COST OF NEW CONTROLLER AND CABINET PAY ITEM.
- 2 REMOVE EXISTING 15 FT TRAFFIC SIGNAL POST. INSTALL NEW TRAFFIC SIGNAL POST, GALVANIZED STEEL, 15 FT. REUSE EXISTING FOUNDATION AND ELECTRIC CABLE IN CONDUIT.
- 3 REMOVE EXISTING 16 FT TRAFFIC SIGNAL POST. INSTALL NEW TRAFFIC SIGNAL POST, GALVANIZED STEEL, 16 FT. REUSE EXISTING FOUNDATION AND ELECTRIC CABLE IN CONDUIT.
- 4 REMOVE AND REPLACE SIGNAL HEAD, L.E.D., 1-FACE, 3-SECTION, BRACKET MOUNTED. REUSE EXISTING CABLE.
- 5 REMOVE AND REPLACE SIGNAL HEAD, L.E.D., 1-FACE, 3-SECTION, MAST ARM MOUNTED. REUSE EXISTING CABLE.
- 6 REMOVE EXISTING SIGNAL HEAD, L.E.D., 1-FACE, 5-SECTION, BRACKET MOUNTED. REMOVE EXISTING CABLE.
- 7 REMOVE AND REPLACE SIGNAL HEAD, L.E.D., 2-FACE, 1-3 SECTION, 1-5 SECTION, BRACKET MOUNTED. REUSE EXISTING CABLE.
- 8 REMOVE EXISTING PEDESTRIAN PUSH-BUTTON, PEDESTRIAN SIGNAL HEAD(S) AND CABLE IN CONDUIT.
- 9 REMOVE AND REPLACE EXISTING PEDESTRIAN PUSH-BUTTON. REUSE EXISTING CABLE.
- 10 REMOVE EXISTING PEDESTRIAN SIGNAL HEAD, AND INSTALL NEW PEDESTRIAN SIGNAL HEAD, L.E.D., 2-FACE, BRACKET MOUNTED WITH COUNTDOWN TIMER REUSE EXISTING CABLE AND INSTALL ONE ADDITIONAL CABLE IN CONDUIT.
- 11 REMOVE EXISTING PEDESTRIAN SIGNAL HEAD, AND INSTALL NEW PEDESTRIAN SIGNAL HEAD, L.E.D., 2-FACE, BRACKET MOUNTED WITH COUNTDOWN TIMER REUSE EXISTING CABLE.

NOTE:
TEMPORARY WIRELESS INTERCONNECT IS INCLUDED IN TEMPORARY TRAFFIC SIGNAL INSTALLATION PAY ITEM FOR BELMONT.

TEMPORARY WIRELESS INTERCONNECT ANTENNA
SEE WIRELESS INTERCONNECT SCHEMATIC SHEET 1 OF 2
MODEL: YAGI 4 ELEMENT 8dBi 890-960 MHz

THE FOLLOWING EXISTING TRAFFIC SIGNAL EQUIPMENT SHALL BE REMOVED BY THE CONTRACTOR, SHALL REMAIN THE PROPERTY OF THE STATE AND SHALL BE DELIVERED BY THE CONTRACTOR TO THE STATE'S TRAFFIC SIGNAL MAINTENANCE CONTRACTOR'S MAIN FACILITY AS PER THE TRAFFIC SIGNAL SPECIFICATIONS.

- 1 EACH FULL-ACTUATED CONTROLLER AND TYPE IV CABINET
- 12 EACH TRAFFIC SIGNAL BACKPLATE
- 2 EACH TRAFFIC SIGNAL POST, 15 FT.
- 2 EACH TRAFFIC SIGNAL POST, 16 FT.
- 12 EACH SIGNAL HEAD, ALUMINIUM, 1-FACE, 3-SECTION, MAST ARM MOUNTED.
- 2 EACH SIGNAL HEAD, ALUMINIUM, 1-FACE, 3-SECTION, BRACKET MOUNTED.
- 2 EACH SIGNAL HEAD, ALUMINIUM, 1-FACE, 5-SECTION, BRACKET MOUNTED.
- 2 EACH SIGNAL HEAD, ALUMINIUM, 2-FACE, 1-3 SECTION AND 1-5 SECTION, BRACKET MOUNTED.
- 6 EACH PEDESTRIAN SIGNAL HEAD, 1-FACE, DUAL INDICATION W/DW, BRACKET MOUNTED.
- 1 EACH PEDESTRIAN SIGNAL HEAD, 2-FACE, DUAL INDICATION W/DW, BRACKET MOUNTED.
- 7 EACH PEDESTRIAN PUSH-BUTTON.

NOTE:
THE TRAFFIC SIGNAL CONTROLLER EQUIPMENT FOR THIS PROJECT SHALL BE "ECONOLITE" TO MATCH THE EXISTING ADJACENT SYSTEM.

RESTORATION OF WORK AREA RESTORATION OF THE TRAFFIC SIGNAL WORK AREA SHALL BE INCIDENTAL TO THE RELATED PAY ITEM SUCH AS FOUNDATION, CONDUIT, HANDHOLE, TRENCH AND BACKFILL, ETC., AND NO EXTRA COMPENSATION SHALL BE ALLOWED. ALL ROADWAY SURFACES SUCH AS SHOULDERS, MEDIAN, SIDEWALKS, PAVEMENT, ETC. SHALL BE REPLACED IN KIND. ALL DAMAGE TO MOWED LAWNS SHALL BE REPLACED WITH AN APPROVED SOD, AND ALL DAMAGE TO UNMOWED FIELDS SHALL BE SEEDED IN ACCORDANCE WITH STANDARD SPECIFICATIONS 252 AND 250 RESPECTIVELY.

FILE NAME =	USER NAME = kenthaphixybc	DESIGNED - N.B.	REVISED -	STATE OF ILLINOIS DEPARTMENT OF TRANSPORTATION	EXISTING AND REMOVAL PLAN US 1220/45 (MANNHEIM ROAD) AT GRAND AVENUE	F.A.P. RTE.	SECTION	COUNTY	TOTAL SHEETS	SHEET NO.	
c:\projects\traffic\1070027\us12.20_45.dgn		DRAWN - N.B.	REVISED -			330	2008-006 T5	COOK	104	14	
PLOT SCALE = 40.0000 "/ IN.		CHECKED - D.B.	REVISED -			CONTRACT NO. 60E31					
PLOT DATE = 10/10/2008		DATE - 09/04/2008	REVISED -			FED. ROAD DIST. NO. ILLINOIS FED. AID PROJECT					