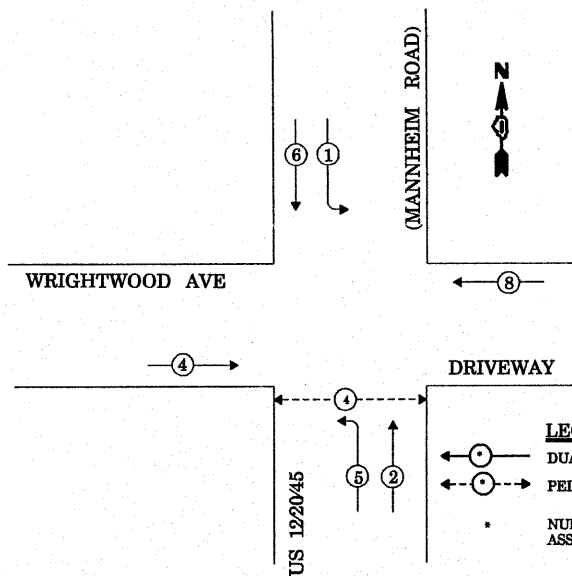


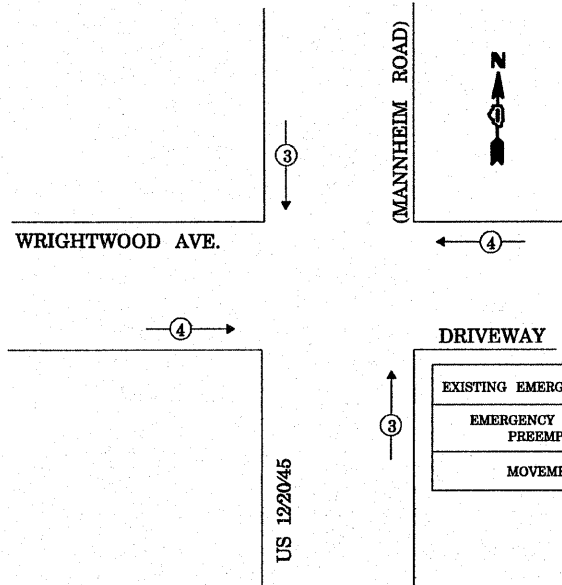
CONTROLLER SEQUENCE



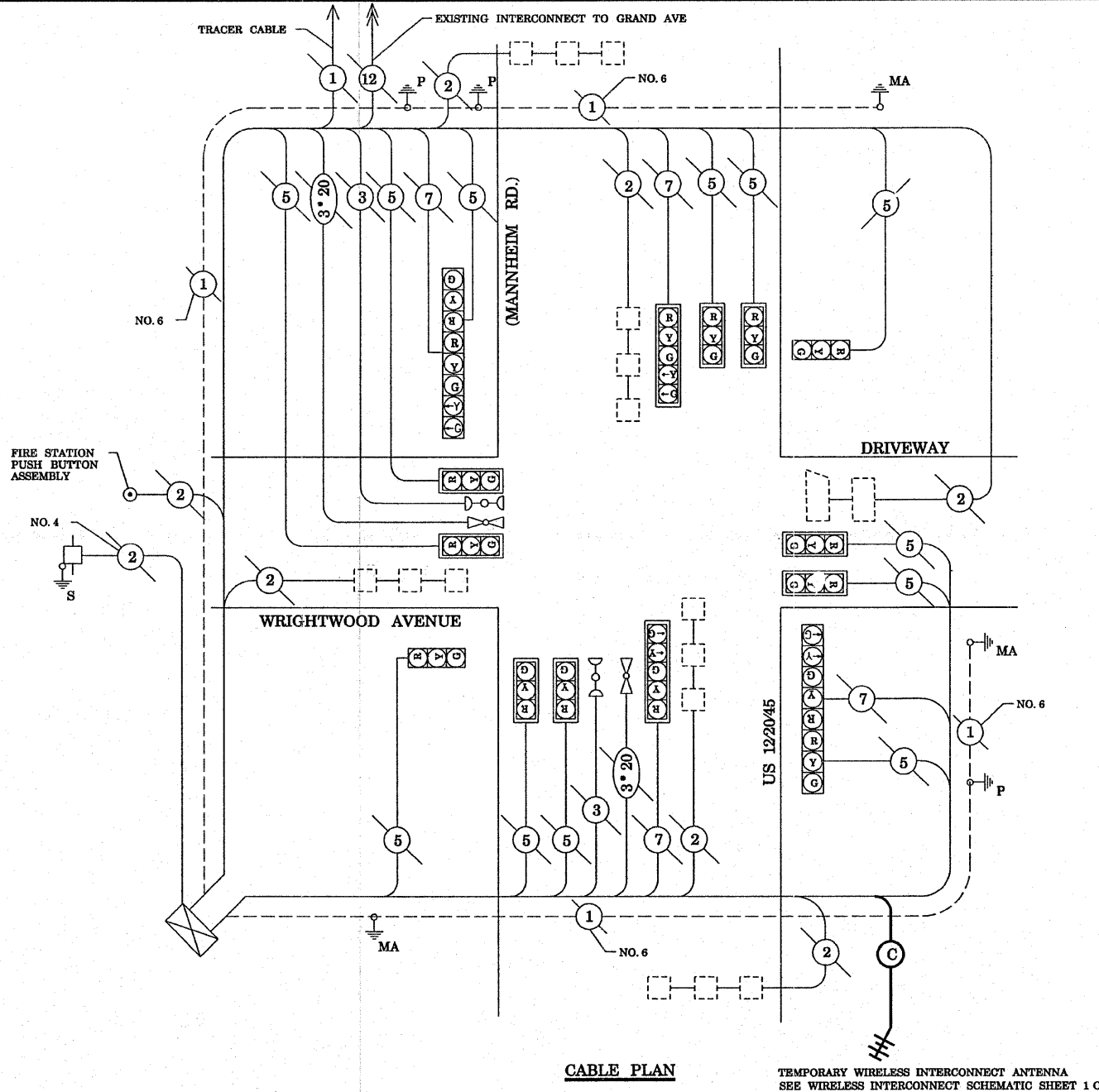
LEGEND
 ○ DUAL ENTRY PHASE
 ○ PEDESTRIAN PHASE
 * NUMBER REFERS TO ASSOCIATED PHASE

PHASE DESIGNATION DIAGRAM

EMERGENCY VEHICLE PREEMPTION SEQUENCE



EXISTING EMERGENCY VEHICLE PREEMPTORS		
EMERGENCY VEHICLE PREEMPTOR	3	4
MOVEMENT		



CABLE PLAN

TEMPORARY WIRELESS INTERCONNECT ANTENNA
 SEE WIRELESS INTERCONNECT SCHEMATIC SHEET 1 OF 2

NOTE:
 THE TRAFFIC SIGNAL CONTROLLER EQUIPMENT FOR THIS PROJECT SHALL BE "ECONOLITE" TO MATCH THE EXISTING ADJACENT SYSTEM.

CABLE PLAN LEGEND

- | PROPOSED | EXISTING | |
|----------|----------|---|
| [Symbol] | [Symbol] | 8" (200mm) TRAFFIC SIGNAL SECTION |
| [Symbol] | [Symbol] | 12" (300mm) TRAFFIC SIGNAL SECTION |
| [Symbol] | [Symbol] | 12" (300mm) PEDESTRIAN SIGNAL SECTION |
| [Symbol] | [Symbol] | 12" (300mm) PEDESTRIAN SIGNAL SECTION |
| [Symbol] | [Symbol] | CONTROLLER CABINET SERVICE INSTALLATION |
| [Symbol] | [Symbol] | TELEPHONE CONNECTION |
| [Symbol] | [Symbol] | MAGNETIC DETECTOR |
| [Symbol] | [Symbol] | PUSHBUTTON DETECTOR |
| [Symbol] | [Symbol] | VEHICLE DETECTOR, INDUCTION LOOP |
| [Symbol] | [Symbol] | 2 DENOTES NUMBER OF CONDUCTORS. ALL CABLE NO. 14 EXCEPT AS INDICATED. ALL LOOP DETECTOR CABLE TO BE SHIELDED. |
| [Symbol] | [Symbol] | SIGNAL FACE WITH BACKPLATE. "P" INDICATES PROGRAMMED HEAD |
| [Symbol] | [Symbol] | RAILROAD CONTROL CABINET |
| [Symbol] | [Symbol] | ILLUMINATED SIGN, FIBER OPTIC "NO LEFT TURN" |
| [Symbol] | [Symbol] | ILLUMINATE SIGN, FIBER OPTIC "NO RIGHT TURN" |
| [Symbol] | [Symbol] | GROUND ROD AT HANDHOLE, DOUBLE HANDHOLE, OR CONTROLLER |
| [Symbol] | [Symbol] | GROUND ROD AT POST OR MAST ARM POLE |
| [Symbol] | [Symbol] | GROUND ROD AT ELECTRIC SERVICE INSTALLATION |
| [Symbol] | [Symbol] | GROUND CABLE IN CONDUIT NO. 6 SOLID COPPER (GREEN) |
| [Symbol] | [Symbol] | FIBER OPTIC CABLE IN CONDUIT NO. 62.5/125 2-MM12F & SM12F |
| [Symbol] | [Symbol] | MICROWAVE VEHICLE SENSOR |
| [Symbol] | [Symbol] | VIDEO DETECTOR |
| [Symbol] | [Symbol] | CLOSED CIRCUIT TV |
| [Symbol] | [Symbol] | EMERGENCY VEHICLE LIGHT DETECTOR |
| [Symbol] | [Symbol] | CONFIRMATION BEACON |
| [Symbol] | [Symbol] | UNINTERRUPTIBLE POWER SUPPLY |
| [Symbol] | [Symbol] | WIRELESS INTERCONNECT (ANTENNA) |

TYPE	NO. LAMPS	WATTAGE INCAND.	WATTAGE LED	% OPERATION	TOTAL WATTAGE
SIGNAL (RED)	16		17	0.50	136.00
(YELLOW)	16		25	0.25	100.00
(GREEN)	16		15	0.25	60.00
ARROW	8		12	0.10	9.60
PED. SIGNAL			25	1.00	-
CONTROLLER	1		100	1.00	100.00
ILLUM. SIGN				0.05	-
FLASHER					-
ENERGY COSTS TO: VILLAGE OF FRANKLIN PARK 9600 BELMONT AVENUE FRANKLIN PARK, IL 60131					TOTAL = 405.60
ENERGY SUPPLY CONTACT: LINDA KLOC PHONE: (708)410-5313 COMPANY: COMMONWEALTH EDISON					

FILE NAME - c:\projects\traffic\1070027\us12_20_45.dgn	USER NAME - kanthaphixaybc	DESIGNED - N.B.	REVISED -
		DRAWN - N.B.	REVISED -
		CHECKED - D.B.	REVISED -
		DATE - 09/04/2008	REVISED -

**STATE OF ILLINOIS
 DEPARTMENT OF TRANSPORTATION**

EXISTING CABLE PLAN
 US 12/20/45 (MANNHEIM ROAD) AT WRIGHTWOOD AVENUE
 SCALE: NTS SHEET NO. OF SHEETS STA. TO STA.

F.A.P. RTE. 330	SECTION 2008-006 TS	COUNTY COOK	TOTAL SHEETS 104	SHEET NO. 19
CONTRACT NO. 60E31				
FED. ROAD DIST. NO. [ILLINOIS] FED. AID PROJECT				