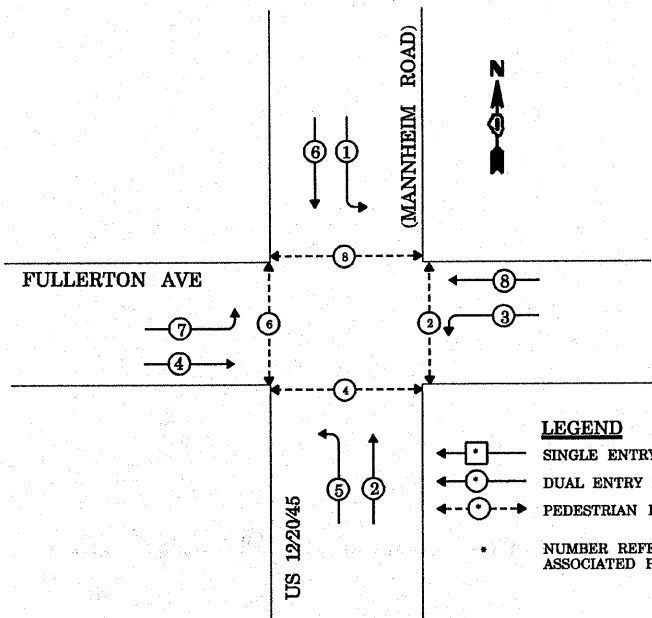
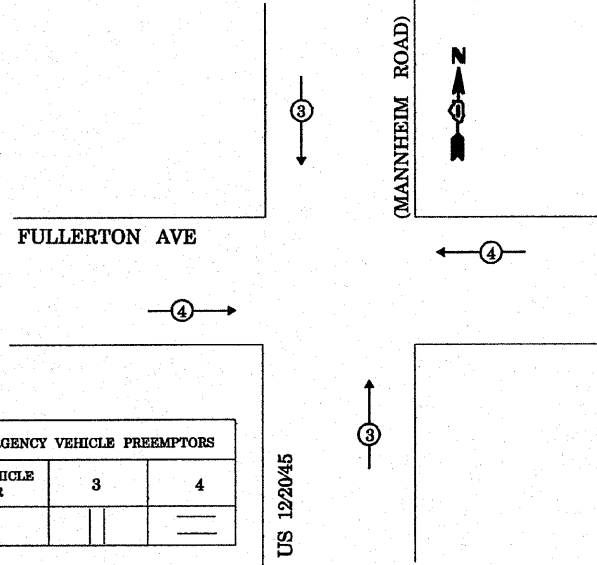


**CONTROLLER SEQUENCE**



**TEMPORARY PHASE DESIGNATION DIAGRAM**

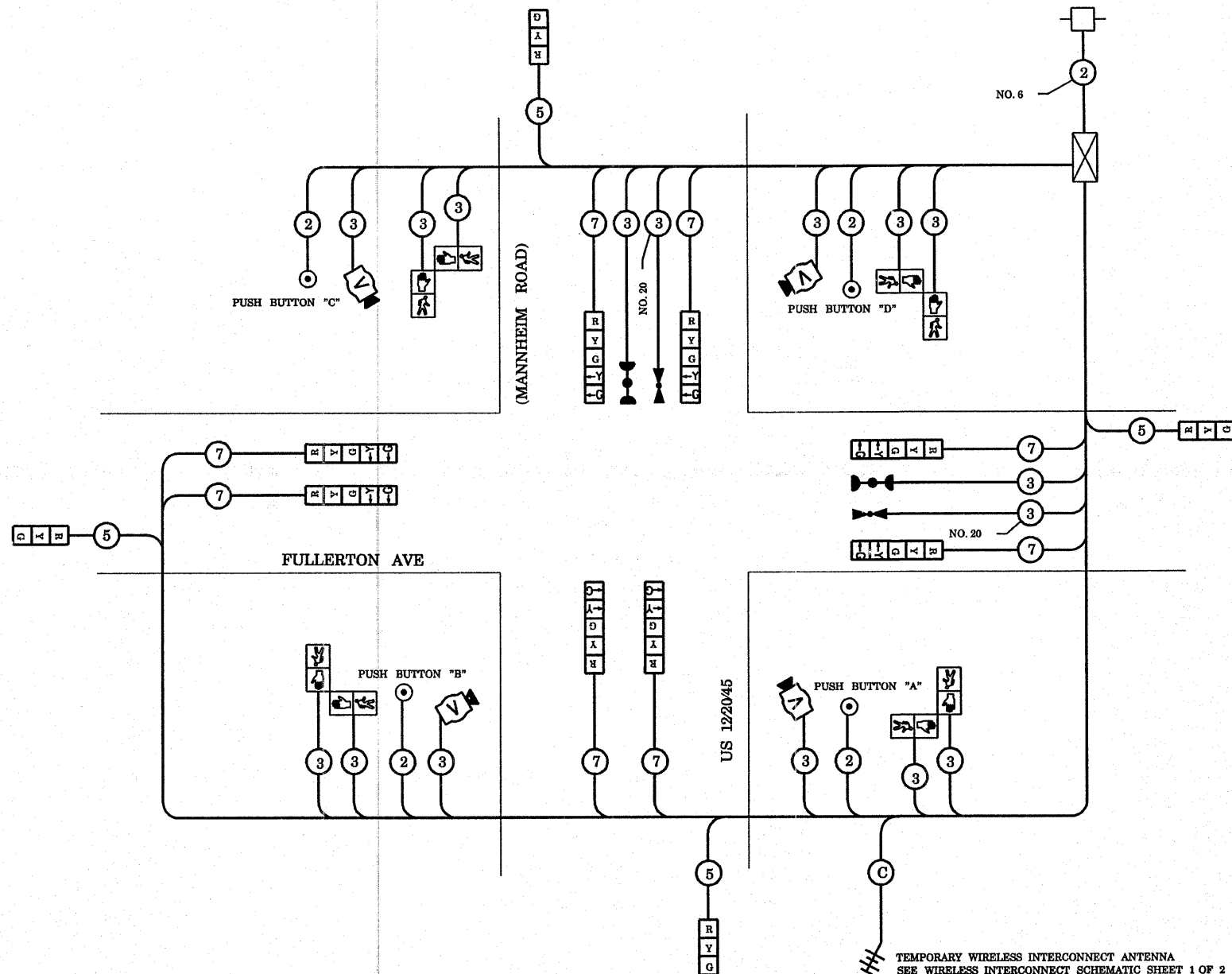
**EMERGENCY VEHICLE PREEMPTION SEQUENCE**



PROPOSED EMERGENCY VEHICLE PREEMPTORS			
EMERGENCY VEHICLE PREEMPTOR	3	4	
MOVEMENT			

I.D.O.T. TRAFFIC SIGNAL INSTALLATION ELECTRICAL SERVICE REQUIREMENTS					TOTAL WATTAGE
TYPE	NO. LAMPS	WATTAGE		% OPERATION	
SIGNAL (RED)	12	INCAND.	LED	0.50	102.00
(YELLOW)	12			0.25	75.00
(GREEN)	12			0.25	45.00
ARROW	16			0.10	19.20
PED. SIGNAL	8			1.00	200.00
CONTROLLER	1			1.00	100.00
ILLUM. SIGN				0.05	-
FLASHER				0.05	-
ENERGY COSTS TO:				TOTAL =	541.20
VILLAGE OF FRANKLIN PARK 4500 BELMONT AVENUE FRANKLIN PARK, IL 60131					
ENERGY SUPPLY CONTACT: LINDA KLOC PHONE: (708)410-5313 COMPANY: COMMONWEALTH EDISON					

FILE NAME =	DESIGNED - N.B.	REVISOR -
ci:\projects\traffic\1070027\us12_20_45.dgn	DRAWN - N.B.	REVISOR -
	CHECKED - D.B.	REVISOR -
	DATE - 09/04/2008	REVISOR -



**TEMPORARY CABLE PLAN**

**TEMPORARY CABLE DIAGRAM LEGEND**

- TEMPORARY TRAFFIC SIGNAL SECTION OR PEDESTRIAN SIGNAL SECTION, 12" (300 mm)
- TEMPORARY CONTROLLER CABINET
- TEMPORARY SERVICE INSTALLATION
- INDICATES NUMBER OF CONDUCTORS IN CABLE. ALL CONDUCTORS TO BE NUMBERED 14 AWG WIRE UNLESS OTHERWISE NOTED.
- EMERGENCY VEHICLE LIGHT DETECTOR
- CONFIRMATION BEACON
- PEDESTRIAN PUSHBUTTON DETECTOR
- VEHICLE DETECTOR, INDUCTION LOOP
- 12" (300 mm) PEDESTRIAN SIGNAL SECTION
- MICROWAVE VEHICLE SENSOR
- VIDEO DETECTOR
- WIRELESS INTERCONNECT (ANTENNA)

NOTE:  
THE TRAFFIC SIGNAL CONTROLLER EQUIPMENT FOR THIS PROJECT SHALL BE "ECONOLITE" TO MATCH THE EXISTING ADJACENT SYSTEM.

\* TEMPORARY WIRELESS INTERCONNECT IS INCLUDED IN TEMPORARY TRAFFIC SIGNAL INSTALLATION PAY ITEM

NOTE:  
PUSHBUTTON "A" SHALL PLACE A CALL IN PHASES 2 AND 4  
PUSHBUTTON "B" SHALL PLACE A CALL IN PHASES 4 AND 6  
PUSHBUTTON "C" SHALL PLACE A CALL IN PHASES 6 AND 8  
PUSHBUTTON "D" SHALL PLACE A CALL IN PHASES 2 AND 8

STATE OF ILLINOIS  
DEPARTMENT OF TRANSPORTATION

TEMPORARY CABLE PLAN  
US 12/2045 (MANNHEIM ROAD) AT FULLERTON AVENUE

F.A.P. RTE. 330	SECTION 2008-006 TS	COUNTY COOK	TOTAL SHEETS 104	SHEET NO. 23
FED. ROAD DIST. NO. ILLINOIS FED. AID PROJECT			CONTRACT NO. 60E31	