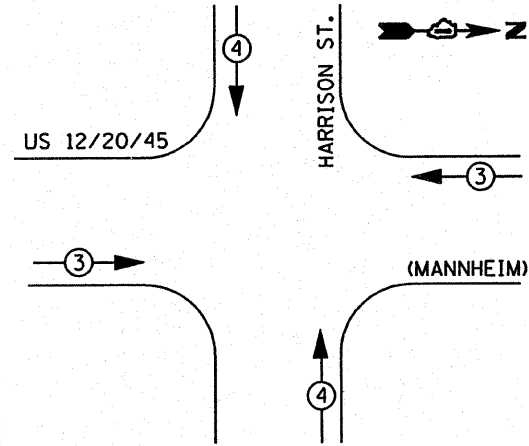


- LEGEND**
- ⊕ DUAL ENTRY PHASE
  - ⊖ SINGLE ENTRY PHASE
  - OL OVERLAP
  - ⊙ PEDESTRIAN PHASE
  - \* NUMBER REFERS TO ASSOCIATED PHASE

EXISTING SIGNAL INSTALLATION  
EMERGENCY VEHICLE PREEMPTION SEQUENCE



EXISTING EMERGENCY VEHICLE PREEMPTOR		
EMERGENCY VEHICLE PREEMPTOR	3	4
MOVEMENT	→	↑

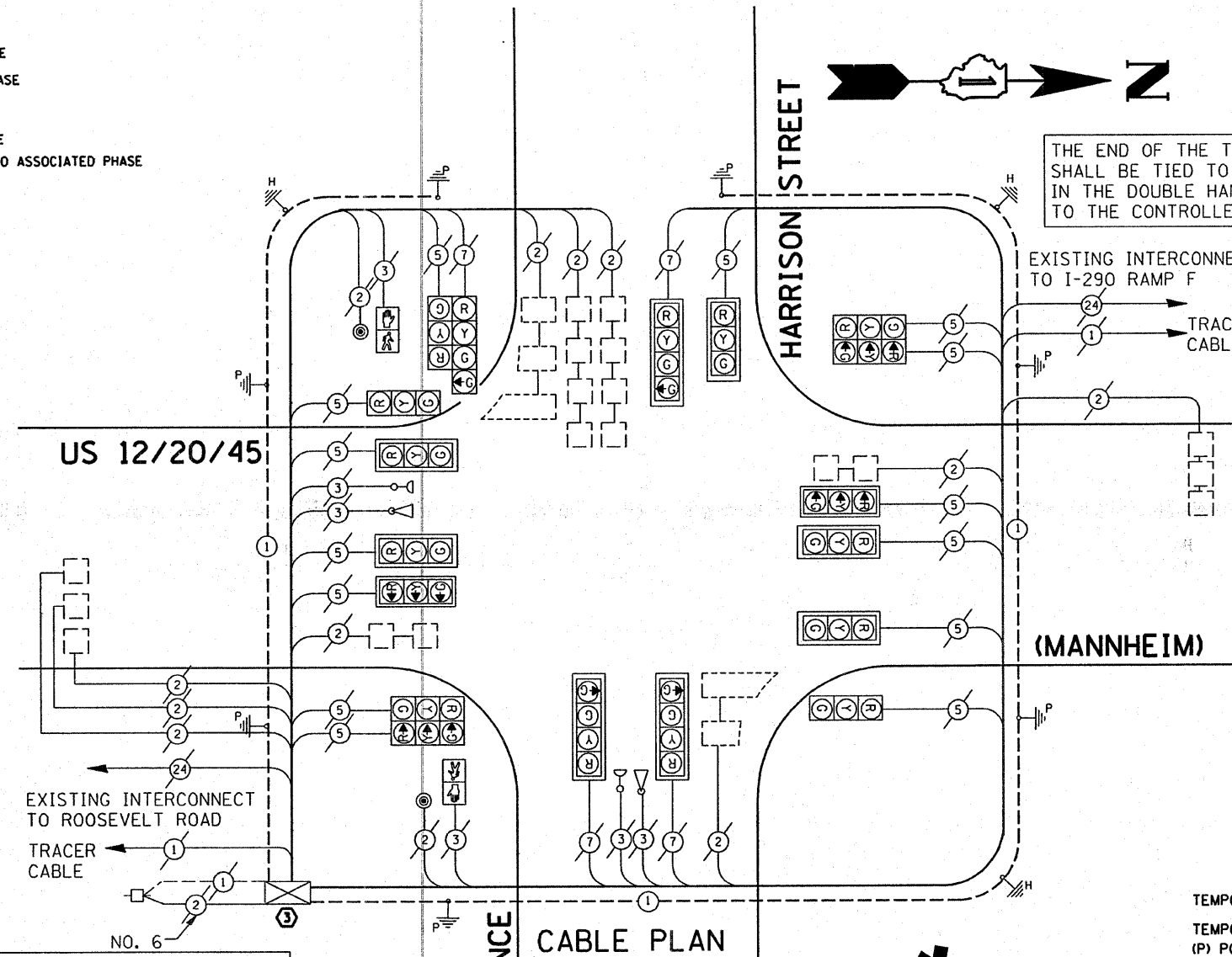
I.D.O.T TRAFFIC SIGNAL INSTALLATION ELECTRICAL SERVICE REQUIREMENTS					TOTAL WATTAGE
TYPE	NO. LAMPS	WATTAGE (INCAND.)	LED	% OPERATION	
SIGNAL (RED)	18	135	17	0.50	
(YELLOW)	18	135	25	0.25	
(GREEN)	18	135	15	0.25	
ARROW	13	135	12	0.10	
PED. SIGNAL	2	90	25	1.00	
CONTROLLER	1	100	100	1.00	
ILLUM. SIGN		84		0.05	
FLASHER				0.50	
ENERGY COSTS TO:					TOTAL =

FOUNDATION (DEPTH)	FT. (m)	CABLE SLACK	FT. (m)	VERTICAL	FT. (m)
TYPE A - POST	4 (1.2)	HANDHOLE	6.5 (2.0)	ALL FOUNDATIONS	3.5 (1.0)
D - CONTROLLER	4 (1.2)	DOUBLE HANDHOLE	13 (4.0)	MAST ARM (L) POLE	20'+H-2'
E - M. ARM POLE		SIGNAL POST	2 (1.0)	(6m+L-0.6m)=	
24" (600mm)	10 (3.0)	CONTROLLER CAB.	1 (0.5)	BRACKET MOUNTED	13 (4.0)
30" (750mm)	15 (4.6)	FIBER OPTIC	13 (4.0)	PED. PUSHBUTTON	4 (1.2)
36" (900mm)	15 (4.6)	ELECTRIC SERVICE	1 (0.5)	ELECTRIC SERVICE	13.5 (4.1)
		GROUND CABLE	1 (0.5)	SERVICE TO GROUND	13.5 (4.1)
				POST MOUNTED	6 (1.8)

ENERGY SUPPLY CONTACT: DAVE LISKA  
PHONE: (773) 509-3417  
COMPANY: COM. EDISON

FILE NAME =  
DESIGNED - BCK  
DRAWN - BCK  
PLOT SCALE = 48.0000" / IN.  
PLOT DATE = 10/10/2008

REVISOR -  
REVISOR -  
REVISOR -  
REVISOR -  
DATE -



THE END OF THE TRACER CABLE SHALL BE TIED TO A CABLE HOOK IN THE DOUBLE HANDHOLE CLOSEST TO THE CONTROLLER FOUNDATION.

THE END OF THE TRACER CABLE SHALL BE TIED TO A CABLE HOOK IN THE DOUBLE HANDHOLE CLOSEST TO THE CONTROLLER FOUNDATION.

EXISTING CABLE DIAGRAM LEGEND

- |  | PROPOSED | EXISTING |
|--|----------|----------|
| TEMPORARY CONTROLLER CABINET   | ⊕        | ⊕        |
| TEMPORARY SERVICE INSTALLATION, (P) POLE OR (G) GROUND MOUNT                             | ⊖        | ⊖        |
| TEMPORARY TRAFFIC SIGNAL SECTION OR PEDESTRIAN SIGNAL SECTION, 12" (300 mm)              | R        | R        |
| 12" (300 MM) PEDESTRIAN SIGNAL SECTION   | ⊙        | ⊙        |
| ELECTRIC CABLE IN CONDUIT, NO. 14, UNLESS OTHERWISE NOTED. NUMBER OF CONDUCTORS AS NOTED | ②        | ②        |
| PEDESTRIAN PUSHBUTTON DETECTOR   | ⊙        | ⊙        |
| VEHICLE DETECTOR, INDUCTION LOOP   | □        | □        |
| MICROWAVE VEHICLE SENSOR   | M        | M        |
| VIDEO DETECTOR   | V        | V        |
| CLOSED CIRCUIT TV  | C        | C        |
| EMERGENCY VEHICLE SYSTEM DETECTOR  | ⊙        | ⊙        |
| CONFIRMATION BEACON  | ⊙        | ⊙        |

RESTORATION OF WORK AREA. RESTORATION OF THE TRAFFIC SIGNAL WORK AREA SHALL BE INCIDENTAL TO THE RELATED PAY ITEM SUCH AS FOUNDATION, CONDUIT, HANDHOLE, TRENCH AND BACKFILL, ETC., AND NO EXTRA COMPENSATION SHALL BE ALLOWED. ALL ROADWAY SURFACES SUCH AS SHOULDERS, MEDIAN, SIDEWALKS, PAVEMENT, ETC. SHALL BE REPLACED IN KIND. ALL DAMAGE TO MOWED LAWNS SHALL BE REPLACED WITH AN APPROVED SOD, AND ALL DAMAGE TO UNMOWED FIELDS SHALL BE SEEDING IN ACCORDANCE WITH STANDARD SPECIFICATIONS 252 AND 250 RESPECTIVELY.

**FOR INFORMATIONAL USE ONLY.**

STATE OF ILLINOIS  
DEPARTMENT OF TRANSPORTATION

EXISTING CABLE PLAN  
US 12/20/45 (MANNHEIM) @ HARRISON ST.

F.A.P. RTE.	SECTION	COUNTY	TOTAL SHEETS	SHEET NO.
330	2008-006 TS	COOK	100	75
CONTRACT NO. 60E31				

SCALE: SHEET NO. OF SHEETS STA. TO STA.

FED. ROAD DIST. NO. ILLINOIS FED. AID PROJECT