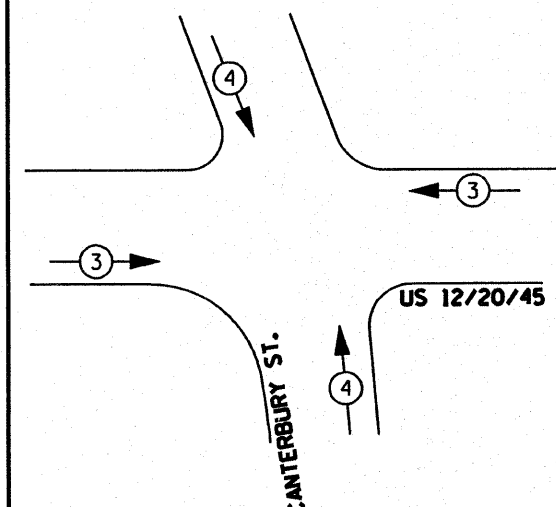


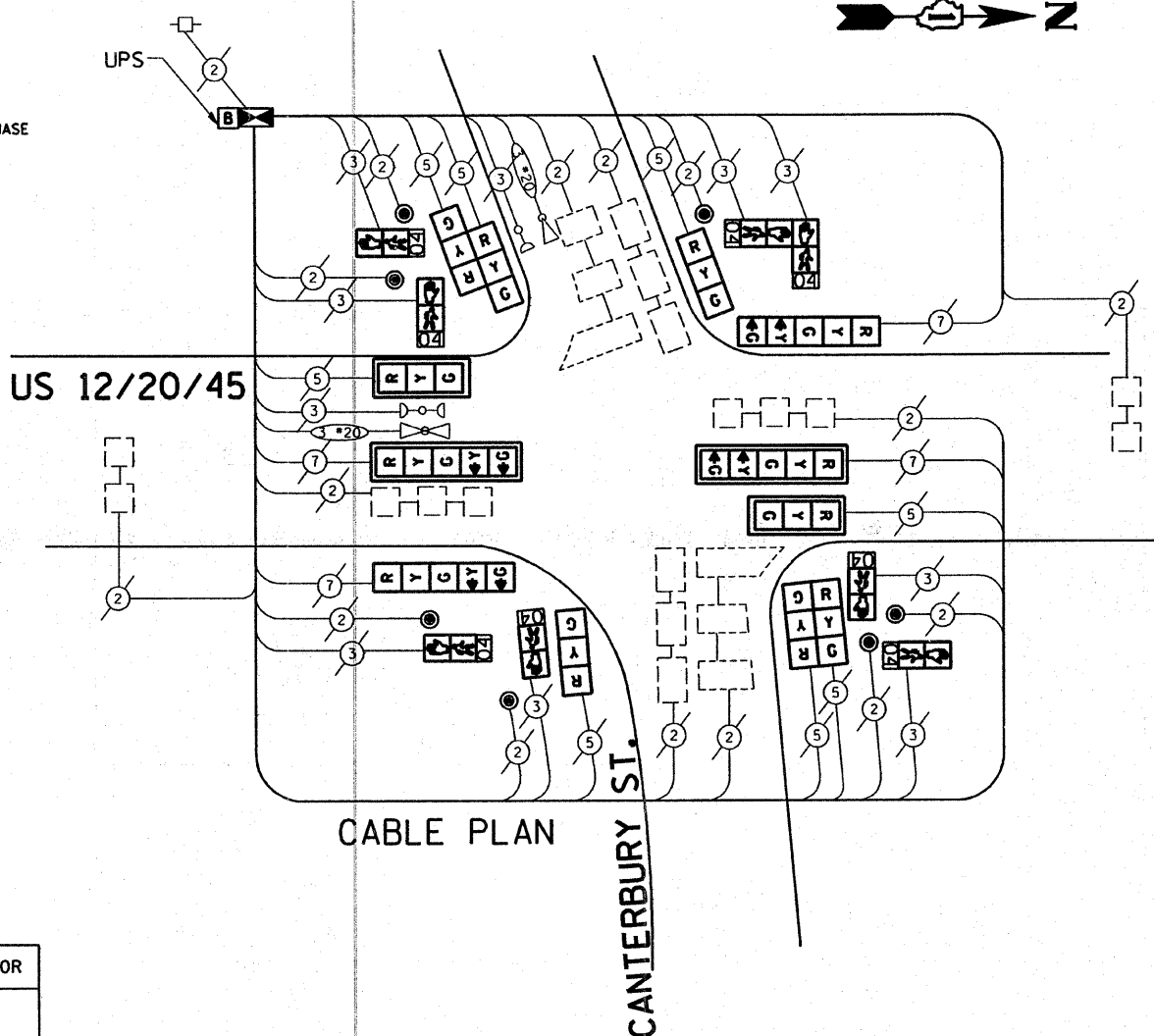
PHASE DESIGNATION DIAGRAM



EXISTING EMERGENCY VEHICLE PREEMPTION SEQUENCE

LEGEND

- DUAL ENTRY PHASE
- SINGLE ENTRY PHASE
- OVERLAP
- PEDESTRIAN PHASE
- * NUMBER REFERS TO ASSOCIATED PHASE



CABLE PLAN

PROPOSED EMERGENCY VEHICLE PREEMPTOR

EMERGENCY VEHICLE PREEMPTOR	3	4
MOVEMENT		

SCHEDULE OF QUANTITIES

ITEM	UNIT	QUANTITY
INDUCTIVE LOOP DETECTOR	EACH	8
THERMOPLASTIC PAVEMENT MARKING LINE 12"	FOOT	464
THERMOPLASTIC PAVEMENT MARKING LINE 24"	FOOT	130
THERMOPLASTIC PAVEMENT MARKING REMOVAL	FOOT	696
MAINTENANCE OF EXISTING TRAFFIC SIGNAL EQUIPMENT	EACH	1
FULL-ACTUATED CONTROLLER AND TYPE IV CABINET (SPECIAL)	EACH	1
TRAFFIC SIGNAL BACKPLATE, LOUVERED, ALUMINUM	EACH	4
PEDESTRIAN PUSH-BUTTON	EACH	7
REMOVE EXISTING TRAFFIC SIGNAL EQUIPMENT	EACH	1
SIGNAL HEAD, L.E.D. 1-FACE, 3 SECTION, MAST ARM MNTD.	EACH	2
SIGNAL HEAD, L.E.D. 1-FACE, 5 SECTION, MAST ARM MNTD.	EACH	2
SIGNAL HEAD, L.E.D. 1-FACE, 5 SECTION, BRKT. MNTD.	EACH	2
SIGNAL HEAD, L.E.D. 1-FACE, 3 SECTION, BRKT. MNTD.	EACH	2
SIGNAL HEAD, L.E.D. 2-FACE, 3 SECTION, BRKT. MNTD.	EACH	2
PEDESTRIAN SIGNAL HEAD, L.E.D., 1-FACE, BRKT. MTD. with COUNTDOWN TIMER	EACH	6
PEDESTRIAN SIGNAL HEAD, L.E.D., 2-FACE, BRKT. MTD. with COUNTDOWN TIMER	EACH	1
UNINTERRUPTIBLE POWER SUPPLY	EACH	1

CABLE PLAN LEGEND

	PROPOSED	EXISTING
CONTROLLER CABINET		
RAILROAD CONTROL CABINET		
SERVICE INSTALLATION, (P) POLE OR (G) GROUND MOUNT		
TELEPHONE CONNECTION		
GROUND ROD AT (C) CONTROLLER, (H) HANDHOLE, (P) POST, (M) MAST ARM, OR (S) SERVICE		
FIBER OPTIC CABLE IN CONDUIT, NUMBER OF FIBERS AS NOTED		
ELECTRIC CABLE IN CONDUIT, NO. 14, UNLESS OTHERWISE NOTED, NUMBER OF CONDUCTORS AS NOTED		
GROUND CABLE IN CONDUIT NO. 6 COPPER (GREEN)		
SIGNAL FACE WITH BACKPLATE. "P" INDICATES PROGRAMMED HEAD		
12" (300mm) RED WITH 8" (200mm) YELLOW AND GREEN TRAFFIC SIGNAL FACE		
12" (300mm) TRAFFIC SIGNAL SECTION		
12" (300mm) PEDESTRIAN SIGNAL SECTION with COUNTDOWN TIMER		
ILLUMINATED SIGN "NO LEFT TURN"		
ILLUMINATED SIGN "NO RIGHT TURN"		
PUSHBUTTON DETECTOR		
DETECTOR LOOP		
PERFORMED DETECTOR LOOP		
MICROWAVE VEHICLE SENSOR		
VIDEO DETECTOR		
CLOSED CIRCUIT TV		
EMERGENCY VEHICLE SYSTEM DETECTOR		
CONFIRMATION BEACON		
UNINTERRUPTIBLE POWER SUPPLY		

I.D.O.T. TRAFFIC SIGNAL INSTALLATION ELECTRICAL SERVICE REQUIREMENTS

TYPE	NO. LAMPS	WATTAGE (INCAND.)	WATTAGE LED	% OPERATION	TOTAL WATTAGE
SIGNAL (RED)	12	135	17	0.50	102.00
(YELLOW)	12	135	25	0.25	75.00
(GREEN)	12	135	15	0.25	45.00
ARROW	8	135	12	0.10	9.60
PED. SIGNAL	8	90	25	1.00	200.00
CONTROLLER	1	100	100	1.00	100.00
ILLUM. SIGN		84		0.05	
FLASHER				0.50	
TOTAL =					531.60

FOUNDATION (DEPTH)	FT. (m)	CABLE SLACK	FT. (m)	VERTICAL	FT. (m)
TYPE A - POST	4 (1.2)	HANDHOLE	6.5 (2.0)	ALL FOUNDATIONS	3.5 (1.0)
D - CONTROLLER	4 (1.2)	DOUBLE HANDHOLE	13 (4.0)	MAST ARM (L) POLE	20'-H-2'-
E - M. ARM POLE		SIGNAL POST	2 (1.0)	(6m-H-0.6m)-	
24" (600mm)	10 (3.0)	CONTROLLER CAB.	1 (0.5)	BRACKET MOUNTED	13 (4.0)
30" (750mm)	15 (4.6)	FIBER OPTIC	13 (4.0)	PED. PUSHBUTTON	4 (1.2)
36" (900mm)	15 (4.6)	ELECTRIC SERVICE	1 (0.5)	ELECTRIC SERVICE	13.5 (4.1)
		GROUND CABLE	1 (0.5)	SERVICE TO GROUND	13.5 (4.1)
				POST MOUNTED	6 (1.8)

RESTORATION OF WORK AREA. RESTORATION OF THE TRAFFIC SIGNAL WORK AREA SHALL BE INCIDENTAL TO THE RELATED PAY ITEM SUCH AS FOUNDATION, CONDUIT, HANDHOLE, TRENCH AND BACKFILL, ETC., AND NO EXTRA COMPENSATION SHALL BE ALLOWED. ALL ROADWAY SURFACES SUCH AS SHOULDERS, MEDIAN, SIDEWALKS, PAVEMENT, ETC. SHALL BE REPLACED IN KIND. ALL DAMAGE TO MOWED LAWNS SHALL BE REPLACED WITH AN APPROVED SOD, AND ALL DAMAGE TO UNMOWED FIELDS SHALL BE SEED IN ACCORDANCE WITH STANDARD SPECIFICATIONS 252 AND 250 RESPECTIVELY.

NOTE: THE TRAFFIC SIGNAL CONTROL EQUIPMENT FOR THIS PROJECT SHALL BE "ECONOLITE" TO MATCH THE ADJACENT SYSTEM.

FILE NAME =
 USER NAME = kenthaphixaybc
 DESIGNED - BCK
 DRAWN - BCK
 PLOT SCALE = 48.0000" / IN.
 PLOT DATE = 10/10/2008

REVISOR -
 REVISIONS -
 CHECKED - DAD
 DATE -

STATE OF ILLINOIS
 DEPARTMENT OF TRANSPORTATION

PROPOSED CABLE PLAN
 US 12/20/45 (MANNHEIM) @ CANTERBURY ST.
 SCALE: SHEET NO. OF SHEETS STA. TO STA.

F.A.P. RTE.	SECTION	COUNTY	TOTAL SHEETS	SHEET NO.
330	2008-006 TS	COOK	100	83
CONTRACT NO. 60E31				
FED. ROAD DIST. NO. ILLINOIS FED. AID PROJECT				