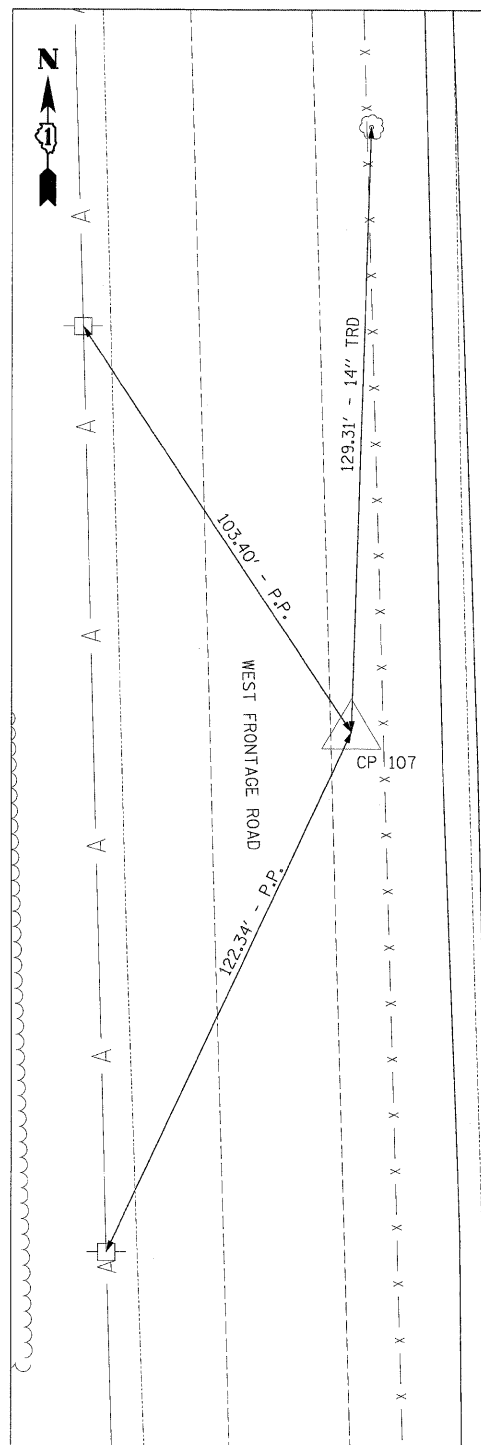


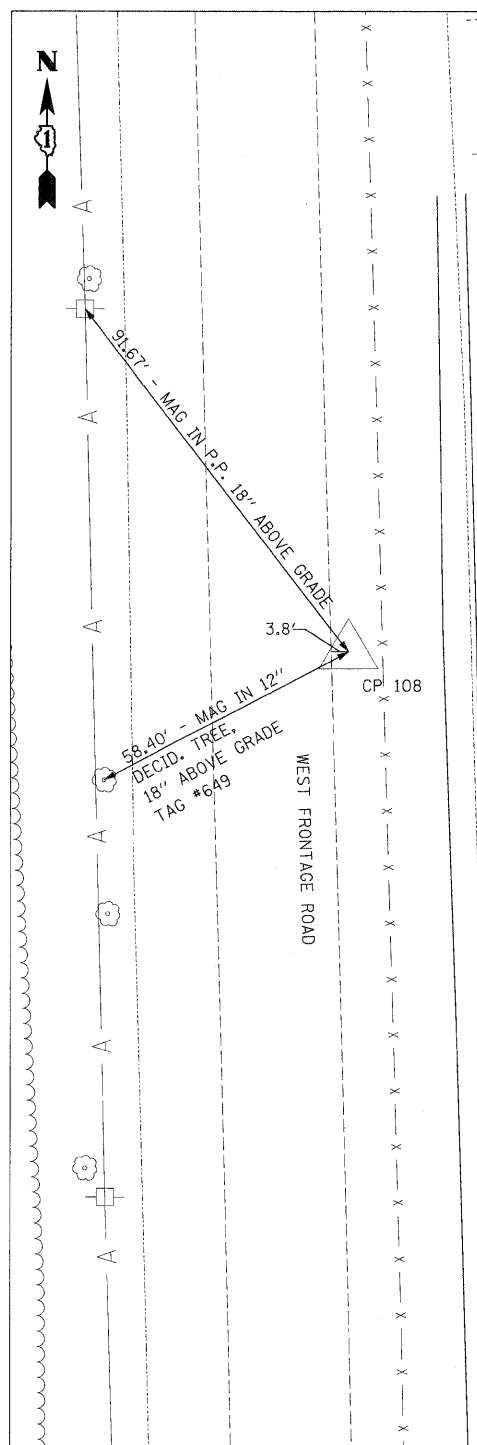
CP 206

N 1723116.51
 E 1022851.09
 STA 891+71.97
 OFF 18.93' RT
 ELEV 533.91



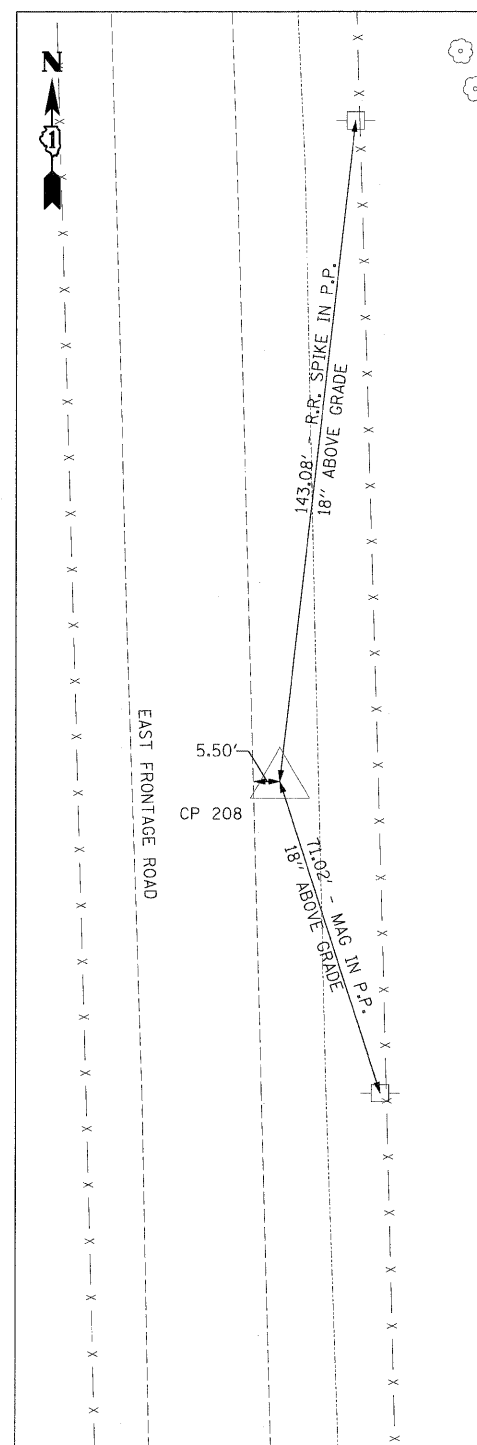
CP 107

N 1723719.78
 E 1022834.12
 STA 897+75.48
 OFF 19.00' RT
 ELEV 535.50



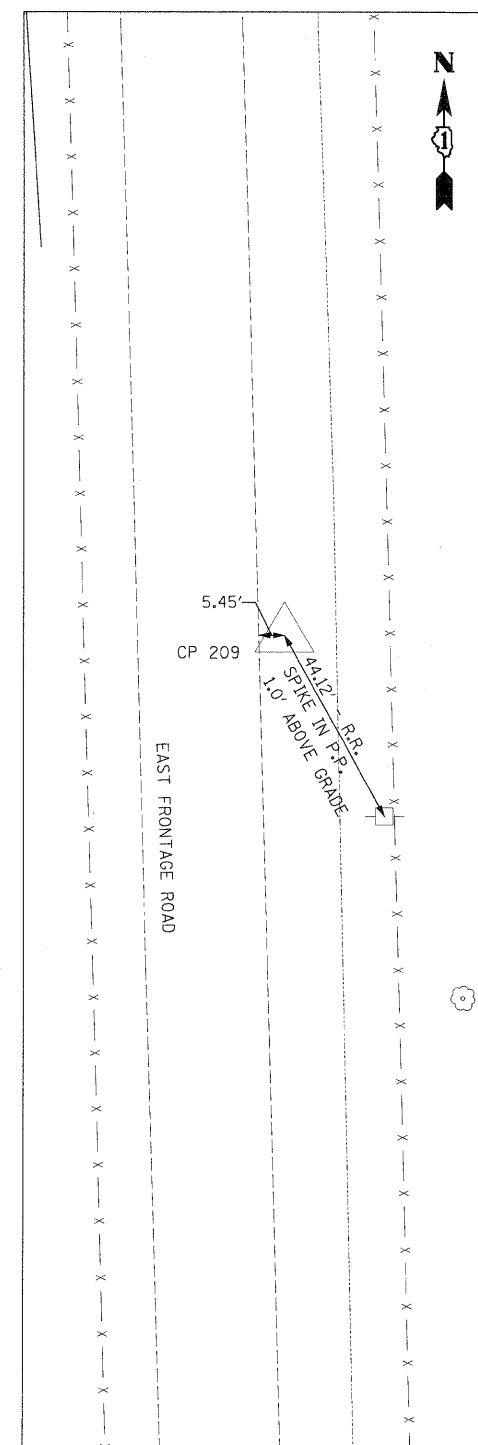
CP 108

N 1724305.65
 E 1022596.44
 STA 6020+47.46
 OFF 17.17' RT
 ELEV 535.56



CP 208

N 1724310.94
 E 1022818.13
 STA 903+66.86
 OFF 19.71' RT
 ELEV 535.22



CP 209

N 1724913.70
 E 1022801.02
 STA 909+69.85
 OFF 19.62' RT
 ELEV 535.74

FILE NAME =
 D160F71-SHT-ATB04.dgn

USER NAME = TKluegel
 PLOT SCALE = 1:20
 PLOT DATE = 3/20/2009

DESIGNED - TRK
 DRAWN - TRK
 CHECKED - DLT
 DATE - 03/20/09

REVISED -
 REVISED -
 REVISED -
 REVISED -

**STATE OF ILLINOIS
 DEPARTMENT OF TRANSPORTATION**

ALIGNMENTS, TIES, AND BENCHMARKS

SCALE: 1"=20' SHEET NO. 4 OF 7 SHEETS STA. TO STA.

F.A.I. RTE.	SECTION	COUNTY	TOTAL SHEETS	SHEET NO.
55	99-2HB-2-R	WILL	171	17
CONTRACT NO. 60F71				
FED. ROAD DIST. NO. 1 ILLINOIS FED. AID PROJECT				