

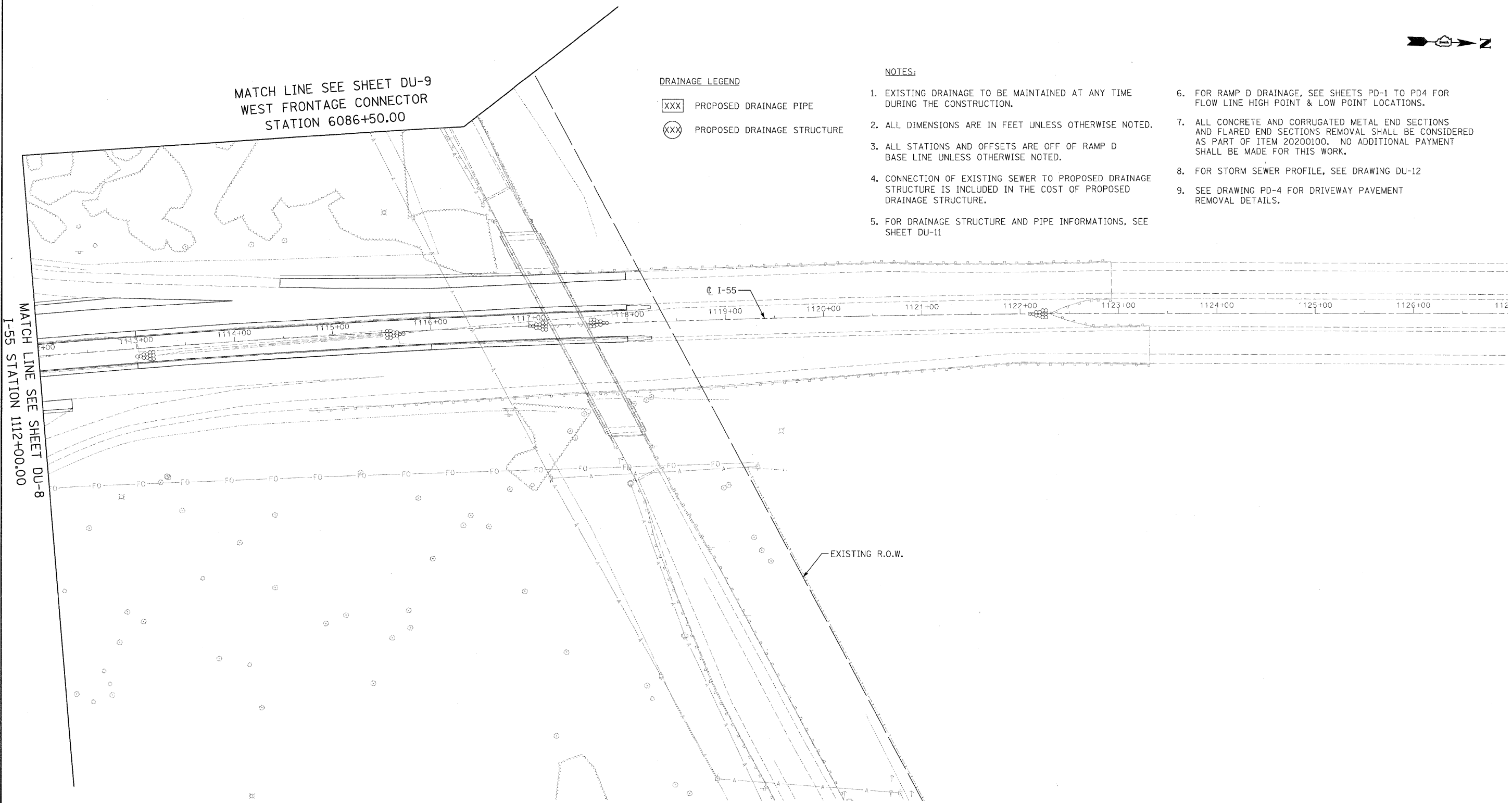


MATCH LINE SEE SHEET DU-9
WEST FRONTAGE CONNECTOR
STATION 6086+50.00

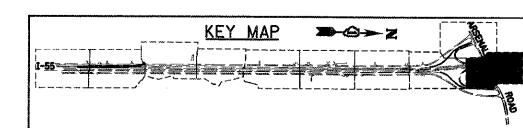
- DRAINAGE LEGEND**
- XXX PROPOSED DRAINAGE PIPE
 - XXX PROPOSED DRAINAGE STRUCTURE

- NOTES:**
1. EXISTING DRAINAGE TO BE MAINTAINED AT ANY TIME DURING THE CONSTRUCTION.
 2. ALL DIMENSIONS ARE IN FEET UNLESS OTHERWISE NOTED.
 3. ALL STATIONS AND OFFSETS ARE OFF OF RAMP D BASE LINE UNLESS OTHERWISE NOTED.
 4. CONNECTION OF EXISTING SEWER TO PROPOSED DRAINAGE STRUCTURE IS INCLUDED IN THE COST OF PROPOSED DRAINAGE STRUCTURE.
 5. FOR DRAINAGE STRUCTURE AND PIPE INFORMATIONS, SEE SHEET DU-11
 6. FOR RAMP D DRAINAGE, SEE SHEETS PD-1 TO PD4 FOR FLOW LINE HIGH POINT & LOW POINT LOCATIONS.
 7. ALL CONCRETE AND CORRUGATED METAL END SECTIONS AND FLARED END SECTIONS REMOVAL SHALL BE CONSIDERED AS PART OF ITEM 20200100. NO ADDITIONAL PAYMENT SHALL BE MADE FOR THIS WORK.
 8. FOR STORM SEWER PROFILE, SEE DRAWING DU-12
 9. SEE DRAWING PD-4 FOR DRIVEWAY PAVEMENT REMOVAL DETAILS.

MATCH LINE SEE SHEET DU-8
I-55 STATION 1112+00.00



SINGH
SINGH & ASSOCIATES, INC.
CONSULTING ENGINEERS



FILE NAME = D16\F71-SHT-DRAIN10.dgn	USER NAME = TKLuegel	DESIGNED - VP	REVISED -	STATE OF ILLINOIS DEPARTMENT OF TRANSPORTATION	PROPOSED DRAINAGE AND UTILITY PLAN		F.A.I RTE. 55	SECTION 99-2HB-2-R	COUNTY WILL	TOTAL SHEETS 171	SHEET NO. 81
PLOT SCALE = 1:50	CHECKED - PKT	REVISED -	CONTRACT NO. 60F71								
PLOT DATE = 3/28/2009	DATE - 03/20/09	REVISED -	SCALE: 1"=50' SHEET NO. 10 OF 10 SHEETS STA. 6086+50.00 TO STA.			FED. ROAD DIST. NO. 1 ILLINOIS FED. AID PROJECT					

FINAL