

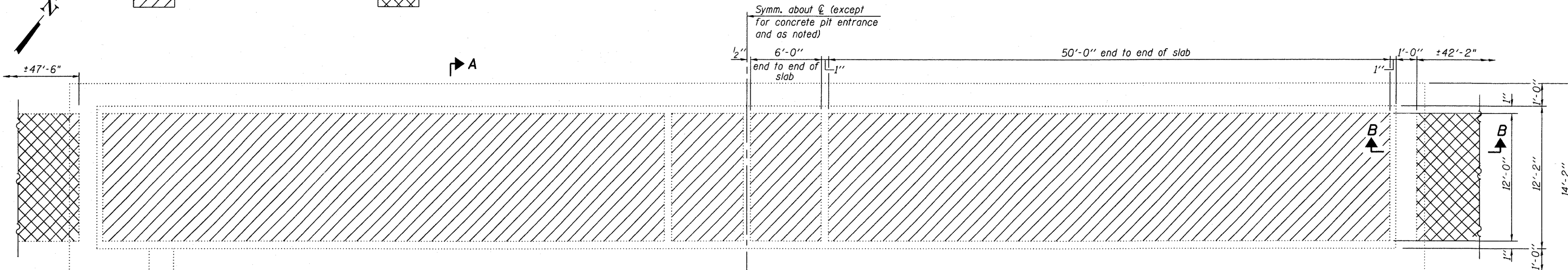


STATE OF ILLINOIS  
DEPARTMENT OF TRANSPORTATION

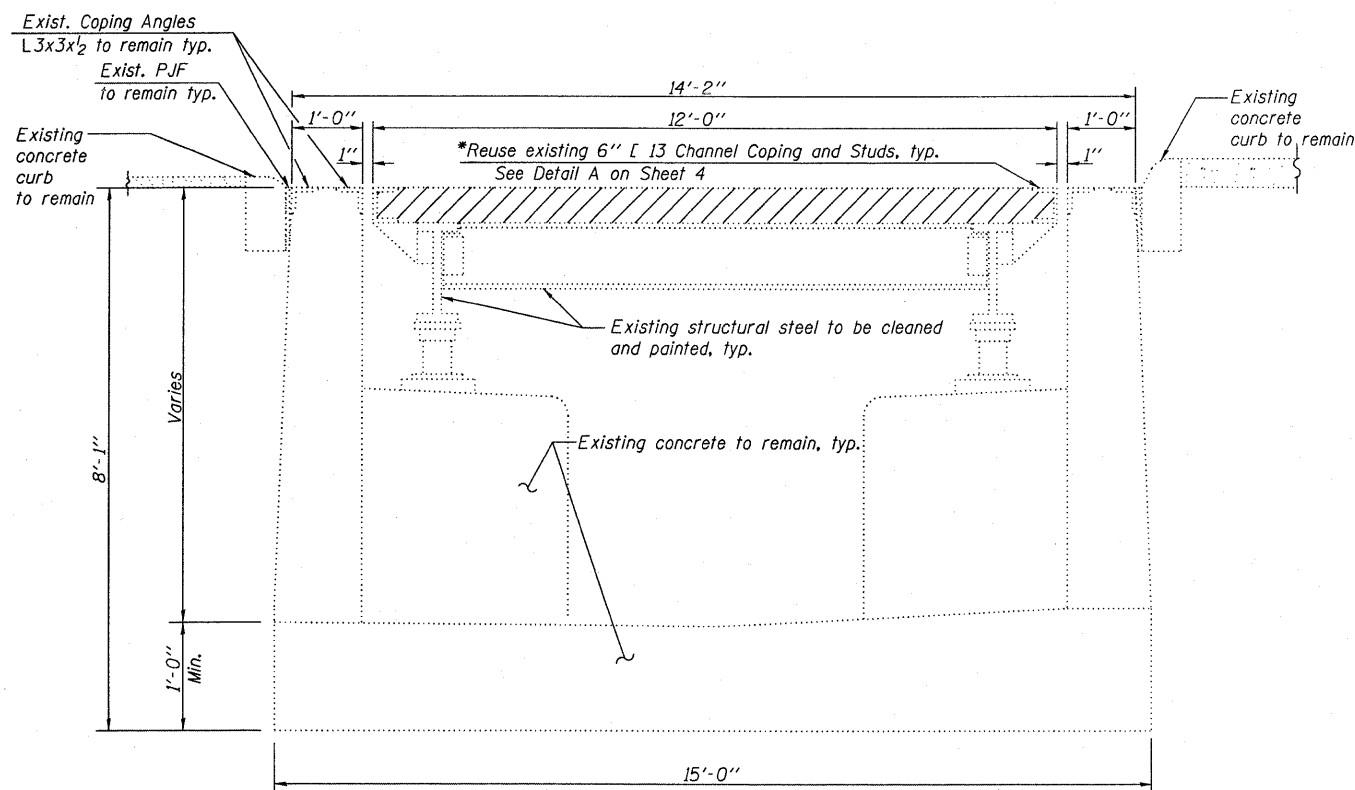
 Indicates concrete to be removed as Removal of Existing Concrete Deck.

 Indicates concrete to be removed as Approach Slab Removal and Pavement Removal (See Sheet 6 for details)

Symm. about  $\bar{C}$  (except for concrete pit entrance and as noted)

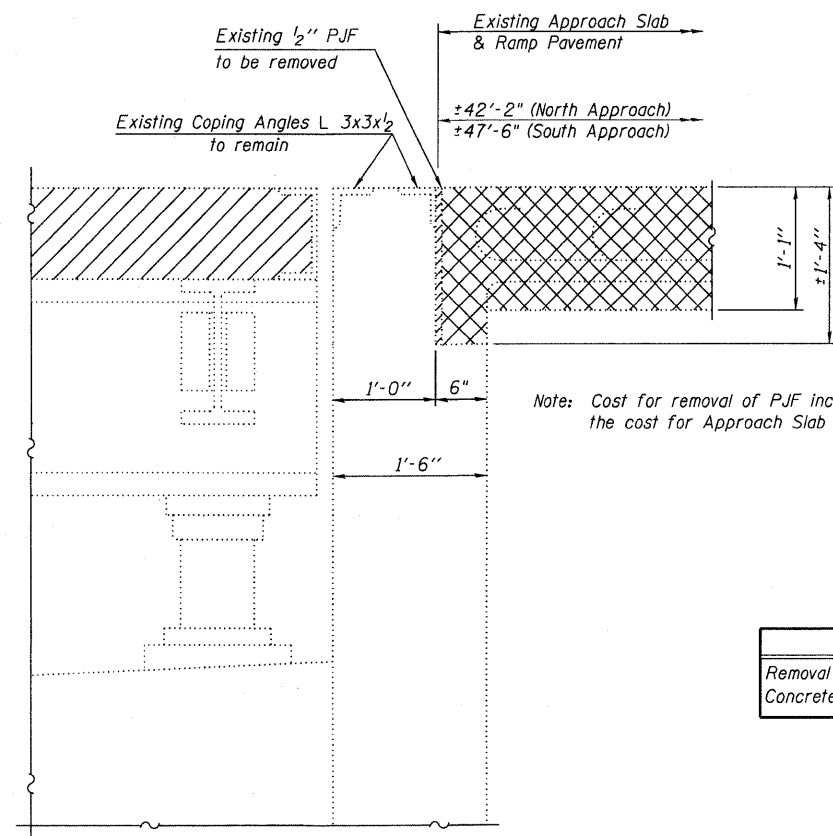


**PLAN**  
(Coping not shown)



**SECTION A-A**

\* See Note A on Sheet 4 of 7



**SECTION B-B**

**BILL OF MATERIAL**

Item	Unit	Total
Removal of Existing Concrete Deck	L. Sum	1

**NOTE:**

See Sheet 6 of 7 for approach slab and ramp pavement removal details and Bill of Material.

**CONCRETE REMOVAL PLAN AND DETAILS  
BOLINGBROOK WEIGH STATION (NB)**

DESIGNED - JSD
CHECKED - RWC
DRAWN - GJS
CHECKED - RWC

**LOCHNER**

H.W. LOCHNER, INC.  
CONSULTING ENGINEERS & PLANNERS  
20 NORTH WACKER DRIVE SUITE 1200  
CHICAGO, IL 60606

SHEET NO. 3 7 SHEETS	F.A.I. RTE.	SECTION	COUNTY	TOTAL SHEETS	SHEET NO.
	55	2009-017 I	WILL	16	6
			CONTRACT NO. 60G16		
FED. ROAD DIST. NO. 1 ILLINOIS FED. AID PROJECT					

t:\2801- bbs structural services\struct\dgn\60G16-003.dgn