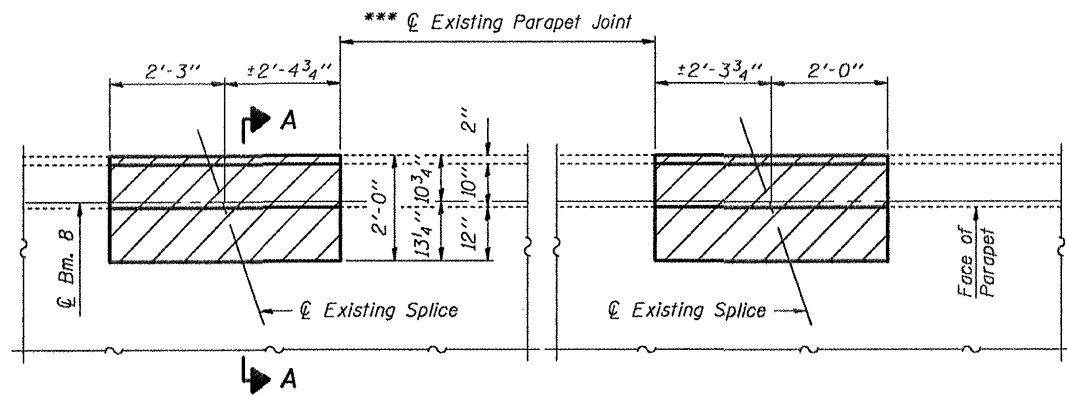


STATE OF ILLINOIS
DEPARTMENT OF TRANSPORTATION

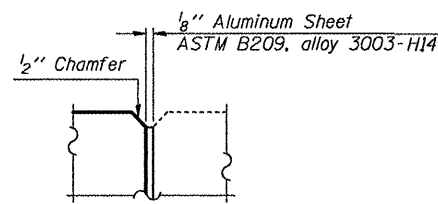


CONCRETE REMOVAL & REPLACEMENT

Hatched areas indicate concrete sections to be removed and replaced. Perimeters of concrete removal areas shall be saw cut 3/4" prior to the removal of concrete.

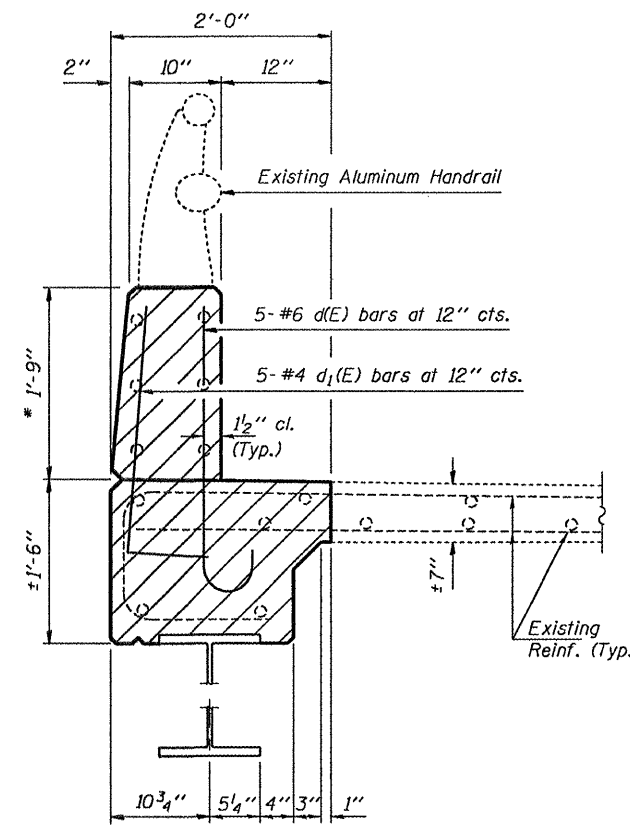
Reinforcement shall be cut only if required for fitting bolts. Cut reinforcement shall be spliced as directed by the Engineer. Cost included with Concrete Removal.

Existing aluminum railing and posts over removal areas shall be measured in the field before removal and re-erected in the same location. Cost included with Concrete Removal.

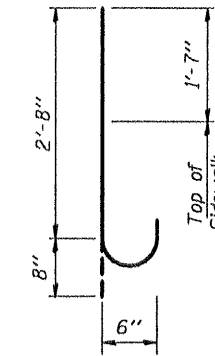


PARAPET JOINT NOTCH DETAIL

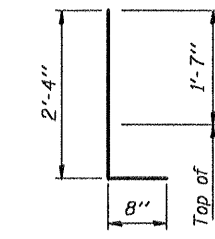
* Bonded construction joints required at all new-to-existing concrete interfaces except at existing parapet joints. At these 2 locations, new parapet joint shall consist of a 1/8" aluminum sheet; see notch detail. Cost included with Concrete Superstructure.



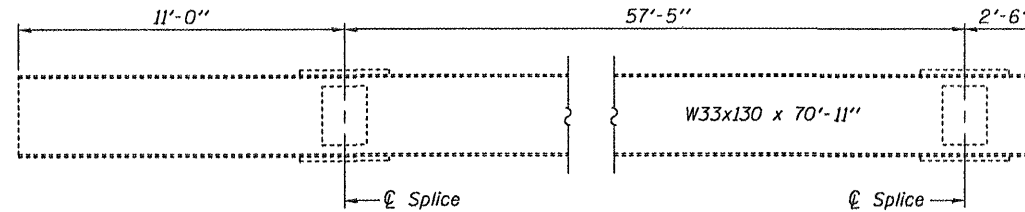
SECTION A-A



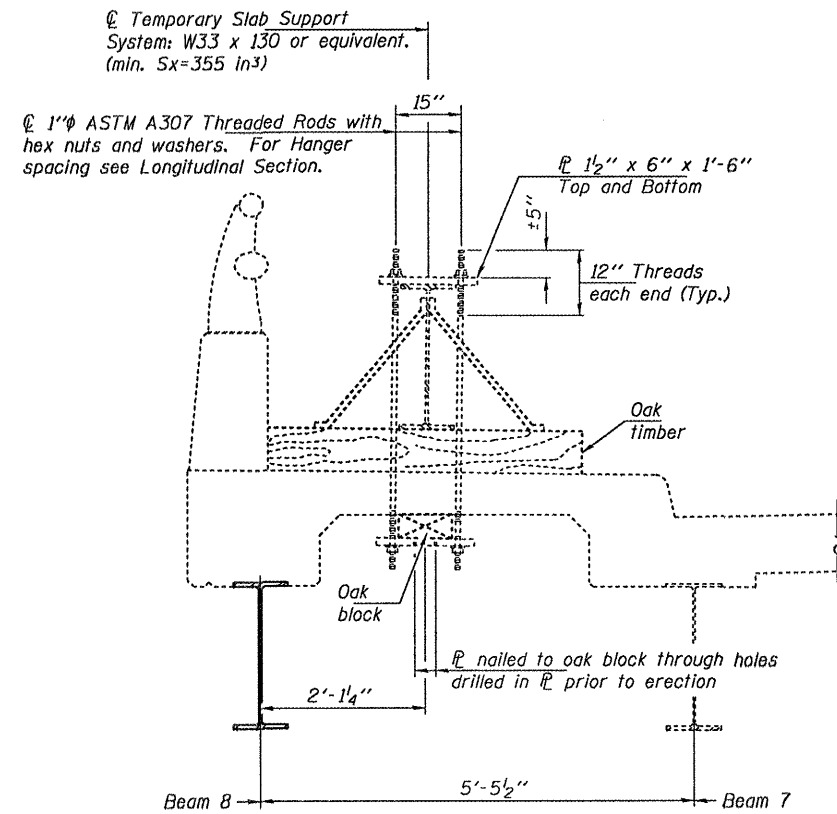
BAR d(E)



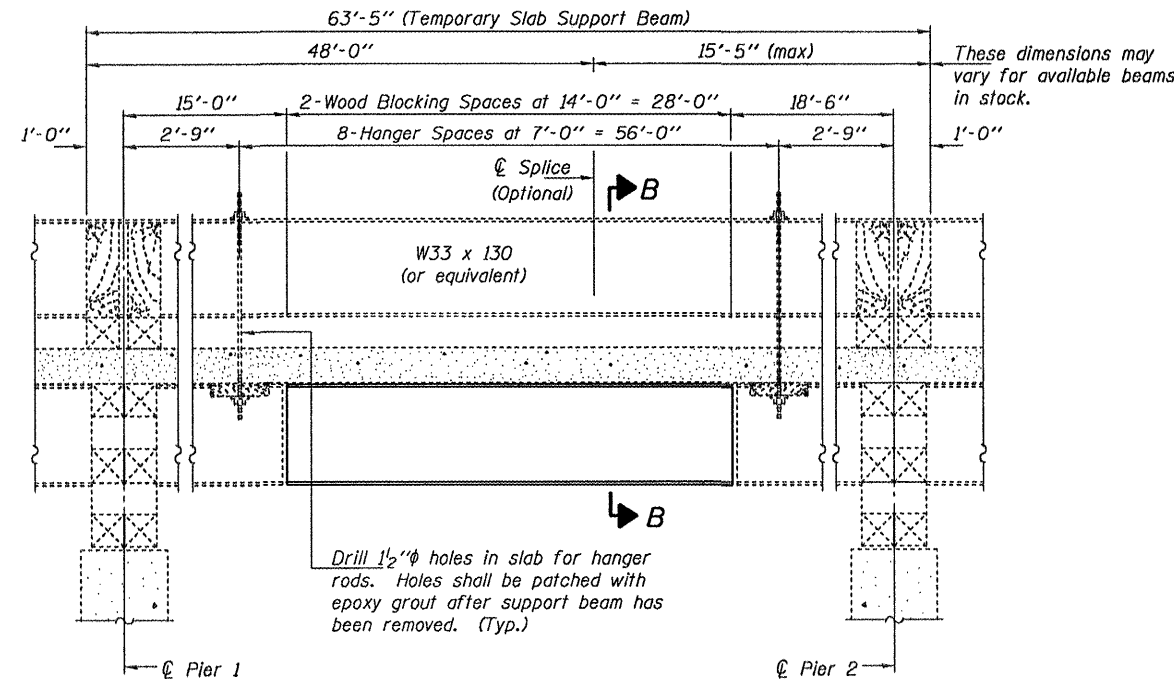
BAR d1(E)



EXISTING TEMPORARY SLAB SUPPORT BEAM



SECTION B-B



**LONGITUDINAL SECTION
EXISTING TEMPORARY SLAB SUPPORT SYSTEM**

Drill 1/2" holes in slab for hanger rods. Holes shall be patched with epoxy grout after support beam has been removed. (Typ.)

These dimensions may vary for available beams in stock.

Notes:
Existing reinforcement extending into the removal area shall be cleaned, straightened and incorporated into the new construction. Any reinforcement bars that are damaged during concrete removal shall be replaced with an approved bar splicer or anchorage system. Cost shall be included with Concrete Removal.

BILL OF MATERIAL

Bar	No.	Size	Length	Shape
d(E)	10	#6	3'-4"	
d1(E)	10	#4	3'-0"	
Concrete Removal			Cu. Yd.	1.4
Concrete Superstructure			Cu. Yd.	1.4
Reinforcement Bars, Epoxy Coated			Pound	70

**SUPERSTRUCTURE DETAILS
SN 016-2121**

DESIGNED	ATH	APRIL 27, 2009
CHECKED	GGE	EXAMINED <i>A. Carl Hoyer</i> ENGINEER OF STRUCTURAL SERVICES
DRAWN	Kyle M. Steffen	PASSED <i>Ralph E. Anderson</i> ENGINEER OF BRIDGES AND STRUCTURES
CHECKED	ATH GGE	

SHEET NO. 2 5 SHEETS	F.A.P. RTE.	SECTION	COUNTY	TOTAL SHEETS	SHEET NO.
	332	0101.1 I-3	COOK	11	7
CONTRACT NO. 60G33					
FED. ROAD DIST. NO. ILLINOIS FED. AID PROJECT					