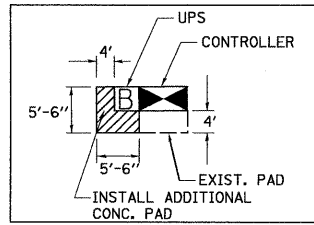


**DETAIL "A"**

N.T.S.



1) 5" THICK CONCRETE PAD SHALL BE POURED NEXT TO NEW CONTROLLER AND /OR UPS TO PROVIDE EASY MAINTENANCE ACCESS.

2) MAINTENANCE PAD SHALL EXTEND TO THE EDGE OF EXISTING CONTROLLER FOUNDATION.

3) COST OF PAD SHALL BE INCLUDED IN THE PRICE OF THE UNINTERRUPTIBLE POWER SUPPLY PAY ITEM.

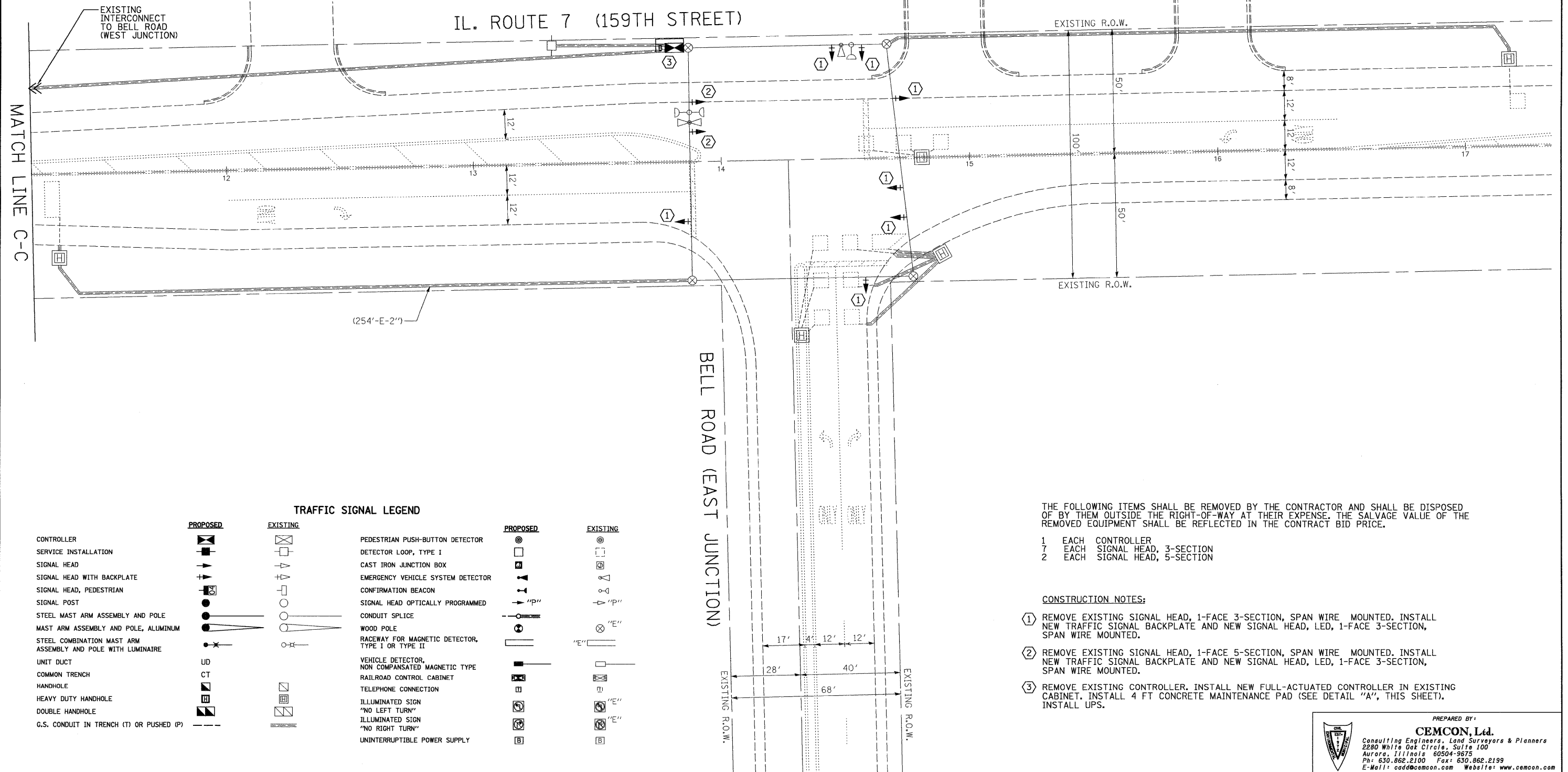
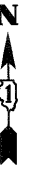
NOTE: THE WORK SHOWN IN DETAIL "A" SHALL BE INCLUDED IN THE COST FOR THE U.P.S. EQUIPMENT.

**NOTE:**

THE CONTRACTOR SHALL BE REQUIRED TO MAINTAIN THE OPERATION OF THE TRAFFIC SIGNALS DURING THE ENTIRE PROJECT.

**NOTE:**

THE TRAFFIC SIGNAL CONTROL EQUIPMENT FOR THIS PROJECT SHALL BE "ECONOLITE" TO MATCH THE EXISTING ADJACENT SYSTEM.



**TRAFFIC SIGNAL LEGEND**

PROPOSED		EXISTING	
CONTROLLER		PEDESTRIAN PUSH-BUTTON DETECTOR	
SERVICE INSTALLATION		DETECTOR LOOP, TYPE I	
SIGNAL HEAD		CAST IRON JUNCTION BOX	
SIGNAL HEAD WITH BACKPLATE		EMERGENCY VEHICLE SYSTEM DETECTOR	
SIGNAL HEAD, PEDESTRIAN		CONFIRMATION BEACON	
SIGNAL POST		SIGNAL HEAD OPTICALLY PROGRAMMED	
STEEL MAST ARM ASSEMBLY AND POLE		CONDUIT SPLICE	
MAST ARM ASSEMBLY AND POLE, ALUMINUM		WOOD POLE	
STEEL COMBINATION MAST ARM ASSEMBLY AND POLE WITH LUMINAIRE		RACEWAY FOR MAGNETIC DETECTOR, TYPE I OR TYPE II	
UNIT DUCT		VEHICLE DETECTOR, NON COMPENSATED MAGNETIC TYPE	
COMMON TRENCH		RAILROAD CONTROL CABINET	
HANDHOLE		TELEPHONE CONNECTION	
HEAVY DUTY HANDHOLE		ILLUMINATED SIGN "NO LEFT TURN"	
DOUBLE HANDHOLE		ILLUMINATED SIGN "NO RIGHT TURN"	
G.S. CONDUIT IN TRENCH (T) OR PUSHED (P)		UNINTERRUPTIBLE POWER SUPPLY	

THE FOLLOWING ITEMS SHALL BE REMOVED BY THE CONTRACTOR AND SHALL BE DISPOSED OF BY THEM OUTSIDE THE RIGHT-OF-WAY AT THEIR EXPENSE. THE SALVAGE VALUE OF THE REMOVED EQUIPMENT SHALL BE REFLECTED IN THE CONTRACT BID PRICE.

- 1 EACH CONTROLLER
- 7 EACH SIGNAL HEAD, 3-SECTION
- 2 EACH SIGNAL HEAD, 5-SECTION

**CONSTRUCTION NOTES:**

- ① REMOVE EXISTING SIGNAL HEAD, 1-FACE 3-SECTION, SPAN WIRE MOUNTED. INSTALL NEW TRAFFIC SIGNAL BACKPLATE AND NEW SIGNAL HEAD, LED, 1-FACE 3-SECTION, SPAN WIRE MOUNTED.
- ② REMOVE EXISTING SIGNAL HEAD, 1-FACE 5-SECTION, SPAN WIRE MOUNTED. INSTALL NEW TRAFFIC SIGNAL BACKPLATE AND NEW SIGNAL HEAD, LED, 1-FACE 3-SECTION, SPAN WIRE MOUNTED.
- ③ REMOVE EXISTING CONTROLLER. INSTALL NEW FULL-ACTUATED CONTROLLER IN EXISTING CABINET. INSTALL 4 FT CONCRETE MAINTENANCE PAD (SEE DETAIL "A", THIS SHEET). INSTALL UPS.

PREPARED BY:  
**CEMCON, Ltd.**  
 Consulting Engineers, Land Surveyors & Planners  
 2280 White Oak Circle, Suite 100  
 Aurora, Illinois 60504-9675  
 Ph: 630.862.2100 Fax: 630.862.2199  
 E-Mail: cadd@cemcon.com Website: www.cemcon.com

FILE NAME = \\MICROST\352072\ IL 7 @ BELL SIG03.DGN	USER NAME = RDS	DESIGNED - KK	REVISED -	<b>STATE OF ILLINOIS DEPARTMENT OF TRANSPORTATION</b>	<b>TRAFFIC SIGNAL MODIFICATION PLAN IL. ROUTE 7 (159TH STREET) AT BELL ROAD (EAST JUNCTION)</b>				F.A.P. RTE.	SECTION	COUNTY	TOTAL SHEETS	SHEET NO.
		DRAWN - RDS	REVISED -		SCALE: N.T.S.	SHEET NO.	OF	SHEETS	STA.	TO STA.	2009-038 TS	19	16
		CHECKED - BPT	REVISED -		CONTRACT NO. 60G43								
		DATE - 03-18-09	REVISED -		FED. ROAD DIST. NO. [ILLINOIS] FED. AID PROJECT								