

F.A.P. RTE.	SECTION	COUNTY	TOTAL SHEETS	SHEET NO.
337	Y-T-1	LAKE	6	1

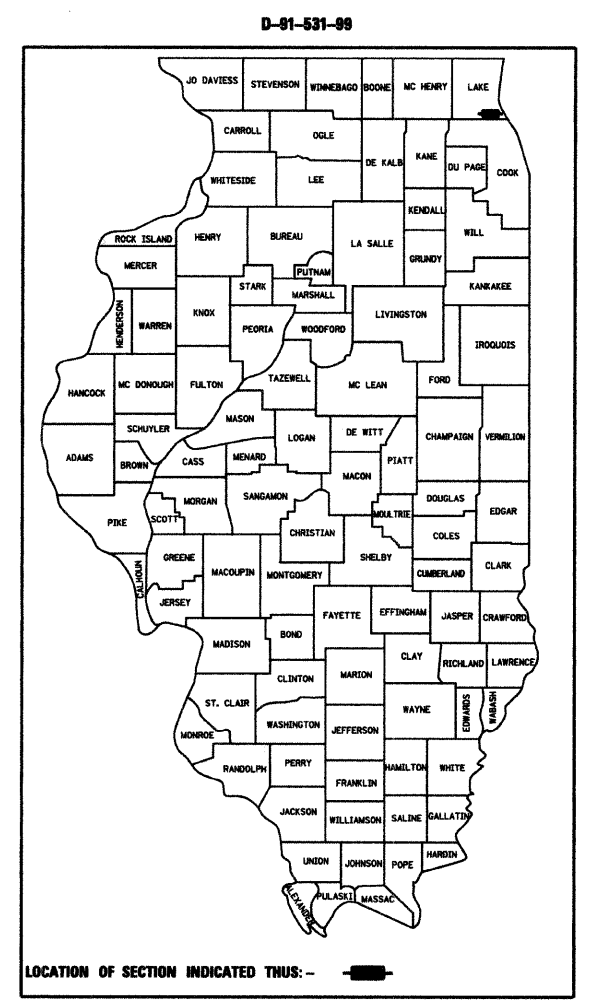
STATE OF ILLINOIS
DEPARTMENT OF TRANSPORTATION

DIVISION OF HIGHWAYS

**PROPOSED
HIGHWAY PLANS**

F.A.P. ROUTE 337 (ILLINOIS ROUTE 22)
BETWEEN THE BANNOCKBURN SHOPPING CENTER ENTRANCES

SECTION Y-T-1
DRAINAGE CORRECTION
LAKE COUNTY
C-91-482-09



DESIGN DESIGNATION:

NA

TRAFFIC DATA:

	1995	2020
ADT IL. RTE. 22:	21800	37000
POSTED SPEED LIMIT IL. RTE. 22:	65 km/h	
DESIGN SPEED LIMIT IL. RTE. 22:	70 km/h	

INDEX OF SHEETS

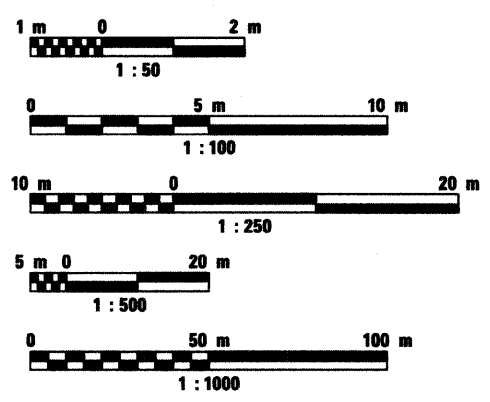
- 1 COVER SHEET
- 2 GENERAL NOTES, SUMMARY OF QUANTITIES
ALIGNMENT AND TIES, BENCHMARKS
- 3 DRAINAGE, EROSION CONTROL AND LANDSCAPING
- 4-5 DISTRICT DETAILS
- 6 CROSS SECTIONS

STATE STANDARDS

- 000001-05 STANDARD SYMBOLS, ABBREVIATIONS AND PATTERNS
- 001006 DECIMAL OF AN INCH AND OF A FOOT
- 280001-04 TEMPORARY EROSION CONTROL SYSTEMS
- 602006-02 CATCH BASIN TYPE B
- 602601-02 PRECAST REINFORCED CONCRETE FLAT SLAB TOP
- 604031-02 FRAME AND GRATE TYPE 7
- 701101-02 OFF-RD OPERATIONS, MULTILANE, 4.5 m (15') TO
600 mm (24") FROM PAVEMENT EDGE
- 701106-02 OFF-RD OPERATIONS, MULTILANE, MORE THAN 4.5 m (15') AWAY
- 701606-06 URBAN LANE CLOSURE, MULTILANE, 2W WITH MOUNTABLE MEDIAN
- 701701-06 URBAN LANE CLOSURE, MULTILANE INTERSECTION
- 701901-01 TRAFFIC CONTROL DEVICES

**PROJECT LOCATED IN
THE VILLAGE OF BANNOCKBURN**

METRIC RATIOS



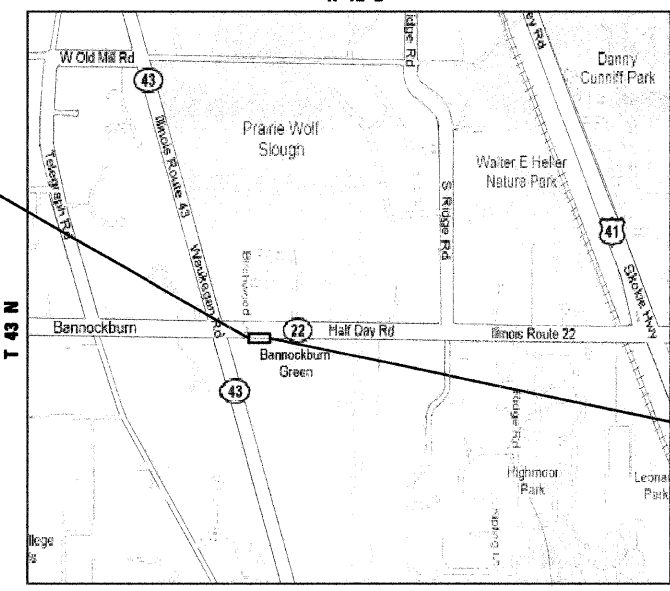
FULL SIZE PLANS HAVE BEEN PREPARED USING STANDARD
ENGINEERING SCALES. REDUCED SIZED PLANS WILL NOT
CONFORM TO STANDARD SCALES. IN MAKING MEASUREMENTS
ON REDUCED PLANS, THE ABOVE SCALES MAY BE USED.

J.U.L.I.E.
JOINT UTILITY LOCATION INFORMATION FOR EXCAVATION
1-800-892-0123

CONTRACT NO. 60650



Craig A. Lukowicz
CRAIG A. LUKOWICZ
ILLINOIS REGISTERED PROFESSIONAL ENGINEER NO. 062-041788
MY LICENSE EXPIRES ON 11-30-09. DATE 3/18/09



IL RTE. 22
IMPROVEMENT BEGINS
STA. 110 + 780.20

IL RTE. 22
IMPROVEMENT ENDS
STA. 110 + 896.00

GROSS LENGTH OF PROJECT = 115.800 m = 0.116 km
NET LENGTH OF PROJECT = 115.800 m = 0.116 km

CONSULTING ENGINEERS SCIENTISTS & LAND SURVEYORS

Bollinger, Lach & Associates, Inc.
333 Pierce Road, Suite 200 Itasca, Illinois 60143
630 438 6400 FAX 630 438 6444
www.bollingerlach.com

STATE OF ILLINOIS
DEPARTMENT OF TRANSPORTATION
DIVISION OF HIGHWAYS

SUBMITTED MARCH 18, 20 09

Diana M. O'Keefe
DISTRICT ENGINEER

May 8, 2009
Charles J. Ingersoll
ENGINEER OF DESIGN AND ENVIRONMENT

May 8, 20 09
Christine M. Reed
DIRECTOR, DIVISION OF HIGHWAYS

**PRINTED BY THE AUTHORITY
OF THE STATE OF ILLINOIS**

IDOT CONSULTANT PROJECT MANAGER: MR. RAJENDRA SHAH (847) 705-4555 (DISTRICT 1)