

F.A.P. RTE.	SECTION	COUNTY	TOTAL SHEETS	SHEET NO.
337	Y-T-1	LAKE	6	1

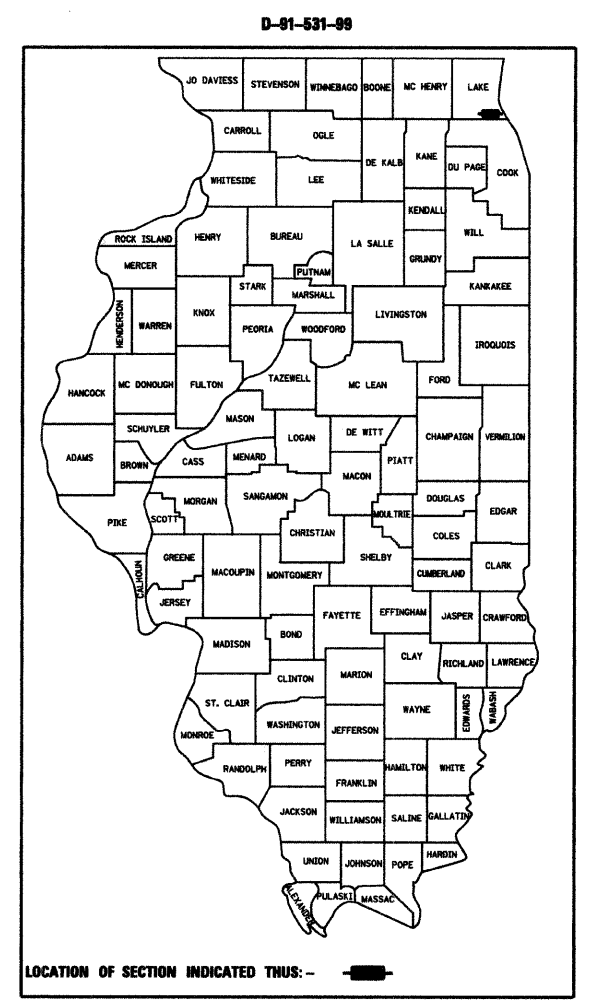
STATE OF ILLINOIS
DEPARTMENT OF TRANSPORTATION

DIVISION OF HIGHWAYS

**PROPOSED
HIGHWAY PLANS**

F.A.P. ROUTE 337 (ILLINOIS ROUTE 22)
BETWEEN THE BANNOCKBURN SHOPPING CENTER ENTRANCES

SECTION Y-T-1
DRAINAGE CORRECTION
LAKE COUNTY
C-91-482-09



DESIGN DESIGNATION:

NA

TRAFFIC DATA:

	1995	2020
ADT IL. RTE. 22:	21800	37000
POSTED SPEED LIMIT IL. RTE. 22:	65 km/h	
DESIGN SPEED LIMIT IL. RTE. 22:	70 km/h	

INDEX OF SHEETS

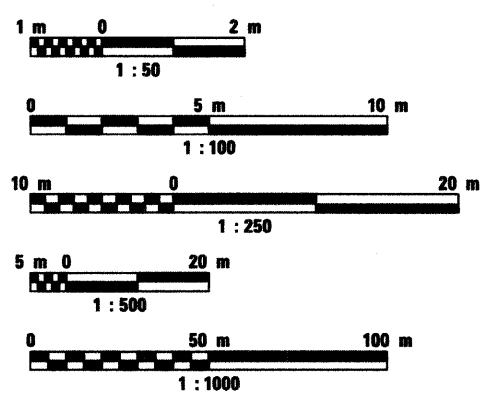
- 1 COVER SHEET
- 2 GENERAL NOTES, SUMMARY OF QUANTITIES
ALIGNMENT AND TIES, BENCHMARKS
- 3 DRAINAGE, EROSION CONTROL AND LANDSCAPING
- 4-5 DISTRICT DETAILS
- 6 CROSS SECTIONS

STATE STANDARDS

- 000001-05 STANDARD SYMBOLS, ABBREVIATIONS AND PATTERNS
- 001006 DECIMAL OF AN INCH AND OF A FOOT
- 280001-04 TEMPORARY EROSION CONTROL SYSTEMS
- 602006-02 CATCH BASIN TYPE B
- 602601-02 PRECAST REINFORCED CONCRETE FLAT SLAB TOP
- 604031-02 FRAME AND GRATE TYPE 7
- 701101-02 OFF-RD OPERATIONS, MULTILANE, 4.5 m (15') TO
600 mm (24") FROM PAVEMENT EDGE
- 701106-02 OFF-RD OPERATIONS, MULTILANE, MORE THAN 4.5 m (15') AWAY
- 701606-06 URBAN LANE CLOSURE, MULTILANE, 2W WITH MOUNTABLE MEDIAN
- 701701-06 URBAN LANE CLOSURE, MULTILANE INTERSECTION
- 701901-01 TRAFFIC CONTROL DEVICES

**PROJECT LOCATED IN
THE VILLAGE OF BANNOCKBURN**

METRIC RATIOS



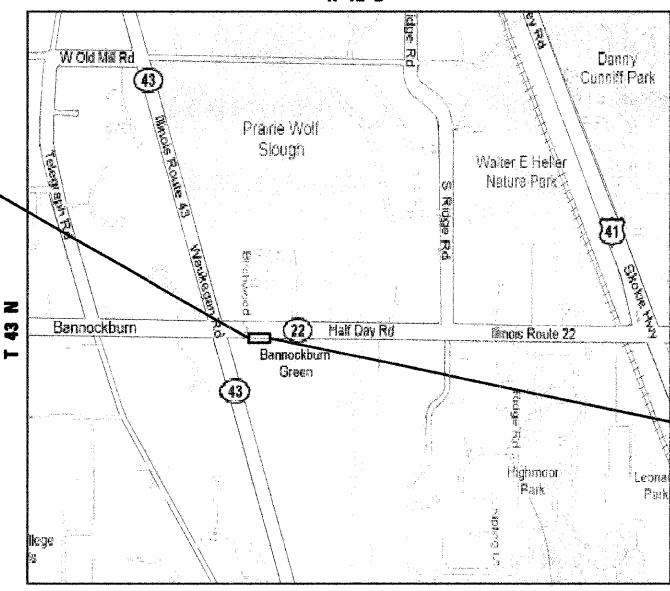
FULL SIZE PLANS HAVE BEEN PREPARED USING STANDARD
ENGINEERING SCALES. REDUCED SIZED PLANS WILL NOT
CONFORM TO STANDARD SCALES. IN MAKING MEASUREMENTS
ON REDUCED PLANS, THE ABOVE SCALES MAY BE USED.

J.U.L.I.E.
JOINT UTILITY LOCATION INFORMATION FOR EXCAVATION
1-800-892-0123

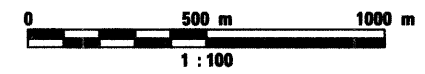
CONTRACT NO. 60650



Craig A. Lukowicz
CRAIG A. LUKOWICZ
ILLINOIS REGISTERED PROFESSIONAL ENGINEER NO. 062-041788
MY LICENSE EXPIRES ON 11-30-09. DATE 3/18/09



WEST DEERFIELD TOWNSHIP
LOCATION MAP



GROSS LENGTH OF PROJECT = 115.800 m = 0.116 km
NET LENGTH OF PROJECT = 115.800 m = 0.116 km

IL RTE. 22
IMPROVEMENT ENDS
STA. 110+896.00

IL RTE. 22
IMPROVEMENT BEGINS
STA. 110+780.20

STATE OF ILLINOIS
DEPARTMENT OF TRANSPORTATION
DIVISION OF HIGHWAYS

SUBMITTED MARCH 18, 20 09

Diana M. O'Keefe
DISTRICT ENGINEER

May 8, 2009
Charles J. Ingersoll
ENGINEER OF DESIGN AND ENVIRONMENT

May 8, 2009
Christine M. Reed
DIRECTOR, DIVISION OF HIGHWAYS

**PRINTED BY THE AUTHORITY
OF THE STATE OF ILLINOIS**

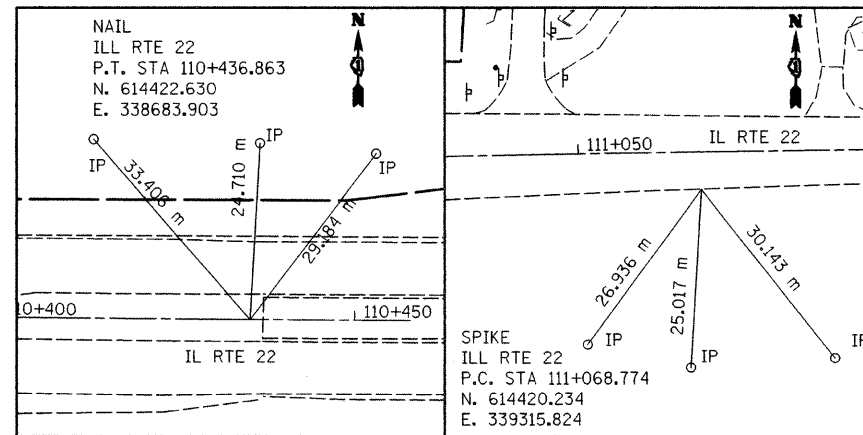
CONSULTING ENGINEERS SCIENTISTS & LAND SURVEYORS

Bollinger, Lach & Associates, Inc.
333 Pierce Road, Suite 200 Itasca, Illinois 60143
630 438 6400 FAX 630 438 6444
www.bollingerlach.com

IDOT CONSULTANT PROJECT MANAGER: MR. RAJENDRA SHAH (847) 705-4555 (DISTRICT 1)

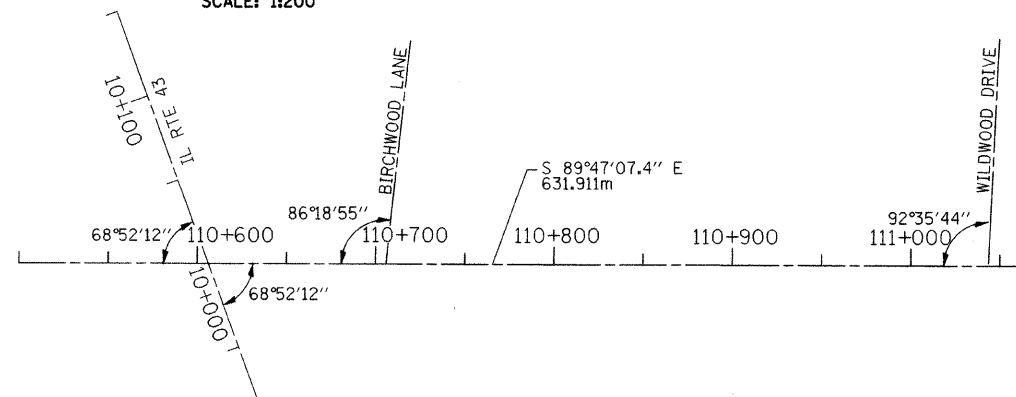
F.A.P. RTE.	SECTION	COUNTY	TOTAL SHEETS	SHEET NO.
337	Y-T-1	LAKE	6	2
STA.		TO STA.		
FED. ROAD DIST. NO. 1		ILLINOIS FED. AID PROJECT		

TIES



ALIGNMENT

SCALE: 1:200



GENERAL NOTES

- BEFORE STARTING ANY EXCAVATION, THE CONTRACTOR SHALL CALL "JULIE" AT 800-892-0123 FOR FIELD LOCATIONS OF BURIED ELECTRIC, TELEPHONE AND GAS FACILITIES. (48 HOURS NOTIFICATION IS REQUIRED).
- THE CONTRACTOR SHALL COORDINATE CONSTRUCTION ACTIVITIES WITH UTILITY COMPANIES AND THE VILLAGE OF BANNOCKBURN.
- THE CONTRACTOR WILL NOT BE ALLOWED TO SET UP A YARD OR FIELD OFFICE ON STATE PROPERTY WITHOUT WRITTEN PERMISSION FROM THE DEPARTMENT.
- BARRICADES: THE CONTRACTOR SHALL PROVIDE AND INSTALL TWO (2) WEIGHTED SAND BAGS ON EACH TYPE I OR TYPE II BARRICADE USED. (ONE (1) WEIGHTED SAND BAG ACROSS EACH BOTTOM RAIL).
- THE PROJECT CONTRACT PLANS AND DOCUMENTS ARE IN METRIC UNIT.

SOIL EROSION & SEDIMENT CONTROL

- THE CONTRACTOR WILL ASSUME RESPONSIBILITY FOR MAINTENANCE OF ALL SOIL EROSION CONTROL DURING CONSTRUCTION.
- LOOSE MATERIAL DEPOSITED IN THE FLOW LINE OF THE GUTTERS OR DRAINAGE STRUCTURES SO THAT THE NATURAL FLOW OF WATER IS OBSTRUCTED SHALL BE REMOVED AT THE CLOSE OF EACH WORKING DAY.
- THE LANDSCAPING AND EROSION CONTROL MEASURES SHOWN ARE BUT A GRAPHICAL REPRESENTATION OF SUGGESTED MEASURES. DEVIATIONS FROM THIS PLAN ARE TO BE EXPECTED PENDING A JOB SITE INSPECTION BETWEEN THE CONTRACTOR AND THE DEPARTMENT.
- UNLESS OTHERWISE INDICATED, ALL VEGETATIVE AND STRUCTURAL EROSION AND SEDIMENT CONTROL PRACTICES WILL BE CONSTRUCTED ACCORDING TO MINIMUM STANDARDS AND SPECIFICATIONS IN THE ILLINOIS URBAN MANUAL REVISED FEBRUARY 2002.
- ALL EROSION CONTROL MEASURES MUST BE INSPECTED EVERY SEVEN DAYS AND AFTER EACH 1/2" RAIN EVENT.

BENCHMARK

- BENCHMARK 110 FOUND SQUARE CUT IN CONCRETE BASE OF TRAFFIC SIGNAL WITH ARM AT SOUTHWEST CORNER OF ILLINOIS ROUTE 22 AND ILLINOIS 43
ELEVATION: 205.2030m
- BENCHMARK 111 FOUND SQUARE CUT IN NORTHWEST CORNER WING WALL OF ILLINOIS ROUTE 22 BRIDGE OVER NORTH BRANCH OF CHICAGO RIVER
ELEVATION: 201.6009m
- BENCHMARK 119 SET SQUARE CUT IN END OF LONG ISLAND EAST SIDE OF ROUTE 43 SOUTH 152.4m OF ILLINOIS ROUTE 22 AT EXIT OF BANNOCKBURN GREEN
ELEVATION: 203.7486m

SUMMARY OF QUANTITIES

CODE NO.	PAY ITEM	UNIT	URBAN 100% STATE TOTAL QTY.
M2020010	EARTH EXCAVATION	CU M	337
M2113100	TOPSOIL FURNISH AND PLACE, 100 mm	SQ M	1,559
M2021200	REMOVAL AND DISPOSAL OF UNSUITABLE MATERIAL	CU M	237
M2500400	NITROGEN FERTILIZER NUTRIENT	KG	11
M2520110	SODDING, SALT TOLERANT	SQ M	1,559
M2500500	PHOSPHORUS FERTILIZER NUTRIENT	KG	11
28000510	INLET FILTERS	EACH	5
M2500600	POTASSIUM FERTILIZER NUTRIENT	KG	11
M5502900	STORM SEWERS, TYPE 1, REINFORCED CONCRETE CULVERT, STORM DRAIN, AND SEWER PIPE, CLASS III 750 MM	METER	7
M2520200	SUPPLEMENTAL WATERING	UNIT	38
M5504800	STORM SEWERS TO BE CLEANED	METER	6
60206705	CATCH BASINS, TYPE B	EACH	4
60402110	GRATES, TYPE 7	EACH	4
60500050	REMOVING CATCH BASINS	EACH	2
67100100	MOBILIZATION	L SUM	1
70101700	TRAFFIC CONTROL AND PROTECTION	L SUM	1
70106800	CHANGEABLE MESSAGE SIGN	CAL MO	1
MX032985	VIDEO TAPING STORM SEWERS	METER	925
XX005656	INLET FILTER CLEANING	EACH	5
Z0013798	CONSTRUCTION LAYOUT	L SUM	1
Z0018500	DRAINAGE STRUCTURES TO BE CLEANED	EACH	2

EARTHWORK QUANTITIES

LOCATION (STA TO STA)	EARTH EX. (CU m)	ADJ. EARTH EX. (15%)	EMBANKMENT (CU m)	BALANCE WASTE (+) OR SHORTAGE (-)
110+780.20 TO 110+896	337.396	286.787	69.033	217.754
TOTAL	337			218

REVISIONS	
NAME	DATE

ILLINOIS DEPARTMENT OF TRANSPORTATION
FAP ROUTE 337 (IL. RTE. 22)

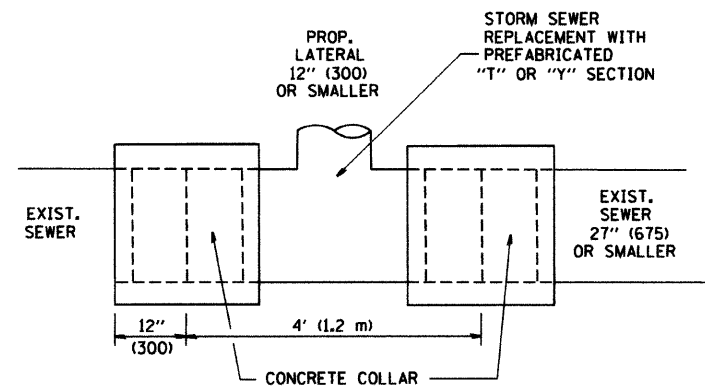
IL. RTE. 22

GENERAL NOTES, SUMMARY OF QUANTITIES,
ALIGNMENT, BENCHMARK AND TIES

SCALE: NONE
DATE MARCH 20, 2009

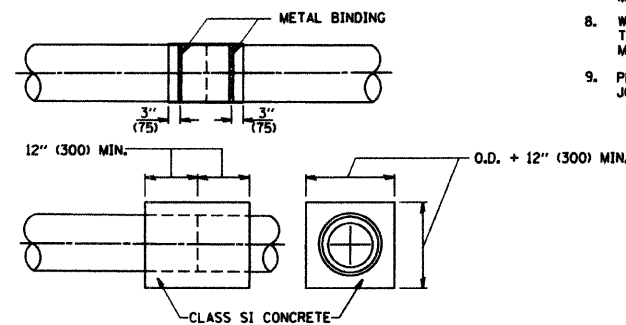
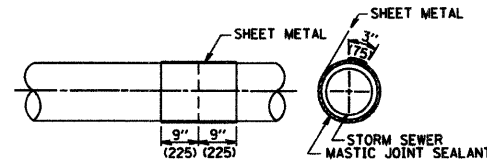
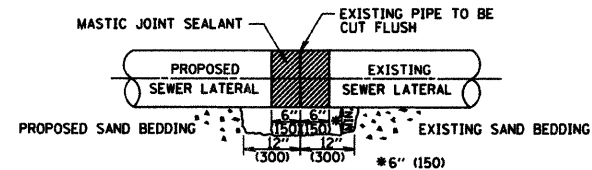
DRAWN BY DC
CHECKED BY JIP

F.A. RTE.	SECTION	COUNTY	TOTAL SHEETS	SHEET NO.
337	Y-T-1	LAKB	6	4
STA.		TO STA.		
FED. ROAD DIST. NO.	ILLINOIS	FED. AID PROJECT		



DETAIL "A"

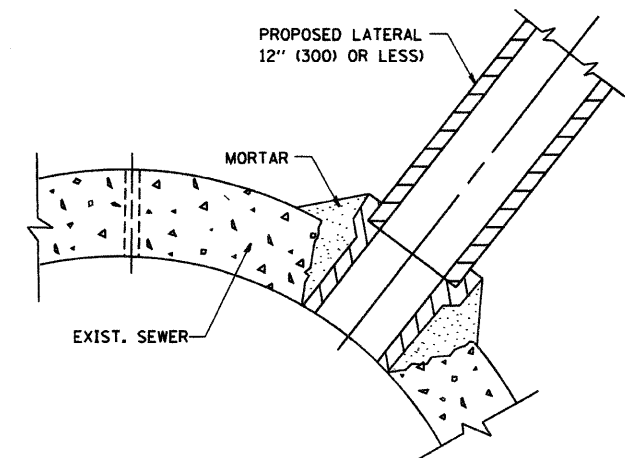
LATERAL CONNECTION TO EXISTING SEWER OF 27" (675) OR SMALLER



DETAIL "B"
CLASS SI CONCRETE COLLAR

CONSTRUCTION SEQUENCE

- CUT THE EXISTING END OF THE PIPE SO AS TO PRESENT A FLUSH BUTT JOINT. BRUSH AND CLEAN ALL PIPES.
- APPLY THE MASTIC JOINT SEALANT TO THE FIRST 6" (150) OF EACH PIPE.
- BUTT THE PIPES TOGETHER LEAVING A MINIMUM OF 12" x 6" (300 x 150) DEEP EXCAVATION UNDER AND AROUND EACH PIPE END.
- CUT A PIECE OF SHEET METAL GAGE NO. 19 I.I. (0.0418) 18" (450) WIDE BY THE OUTSIDE CIRCUMFERENCE OF THE PIPE PLUS 3" (75) LONG.
- WRAP THE SHEET METAL AROUND THE PIPES, 9" (225) ON EACH SIDE OF THE JOINT, STARTING AT THE TOP OF THE PIPE.
- LAP THE SHEET METAL AT LEAST 3" (75) AT THE TOP OF THE PIPE AND PLACE THE MASTIC JOINT SEALANT BETWEEN THE LAP.
- PLACE TWO METAL BANDS AROUND THE SHEET METAL AND TIGHTEN.
- WIPE OFF ANY EXCESS MASTIC JOINT SEALANT THAT OZES OUT FROM BETWEEN THE SHEET METAL AND THE PIPES.
- PLACE CLASS SI CONCRETE AROUND THE JOINT.



DETAIL "C"

PROPOSED LATERAL CONNECTION TO EXISTING SEWER OF 30" (750) OR LARGER

NOTES

MATERIAL

MATERIAL USED FOR THE TEE OR WYE SECTION SHALL BE COMPATIBLE WITH THE EXISTING STORM SEWER OR THE PROPOSED STORM SEWER.

CONSTRUCTION METHODS

- THIS WORK SHALL BE CONSTRUCTED IN CONFORMANCE WITH THE APPLICABLE PORTIONS OF SECTION 550 OF THE STANDARD SPECIFICATIONS.
- CONNECTION TO AN EXISTING STORM SEWER SHALL BE BY EITHER OF THE FOLLOWING METHODS:
 - PROPOSED STORM SEWER CONNECTION TO EXISTING SEWER OF 27" (675) OR SMALLER SEE DETAIL "A" AND "B".
 - PROPOSED STORM SEWER CONNECTION TO EXISTING SEWER OF 30" (750) OR LARGER SEE DETAIL "C".

IF THE EXISTING SEWER PIPE IS CRACKED, BROKEN OR OTHERWISE DAMAGED BY THE CONTRACTOR IN MAKING THE CIRCULAR OPENING, THE CONTRACTOR SHALL REPLACE THAT SECTION OF PIPE WITH PIPE EQUAL AND SIMILAR IN ALL RESPECTS TO THE PIPE IN THE EXISTING SEWER, IN A CAREFUL WORKMANLIKE MANNER, WITHOUT EXTRA COMPENSATION.

GENERAL

CARE MUST BE TAKEN TO PREVENT DEBRIS FROM ENTERING THE SEWER. ALL DEBRIS WHICH ENTERS THE SEWER MUST BE REMOVED. THE SEWER MUST BE LEFT CLEAN AND UNOBSTRUCTED UPON COMPLETION OF THE CONTRACT.

CARE MUST BE TAKEN TO PREVENT ANY PART OF THE NEW PIPE CONNECTION FROM PROJECTING INTO THE EXISTING SEWER.

BASIS OF PAYMENT

TEE OR WYE CONNECTIONS SHALL BE PAID FOR AT THE CONTRACT UNIT PRICE EACH FOR STORM SEWER TEE OR WYE OF THE TYPE AND SIZE SPECIFIED IN THE PLANS. THIS PRICE SHALL INCLUDE ALL EXCAVATION OF THE TRENCH, REMOVAL OF THE EXISTING STORM SEWER, FURNISHING AND INSTALLING THE SPECIFIED TEE OR WYE SECTION, FURNISHING AND INSTALLING THE REQUIRED CONCRETE COLLAR, AND ALL OTHER MATERIAL NECESSARY TO COMPLETE THIS WORK AS SHOWN AND SPECIFIED.

REMOVAL AND REINSTALLATION OF EXISTING STORM SEWER ADJACENT TO THE PROPOSED TEE OR WYE SECTION, FOR THE PURPOSE OF FACILITATING THE INSTALLATION OF THE TEE OR WYE SECTION, WILL NOT BE PAID FOR SEPARATELY BUT SHALL BE INCLUDED IN THE UNIT PRICE BID FOR THE WORK.

TRENCH BACKFILL, EXCAVATION IN ROCK AND REMOVAL AND REPLACEMENT OF UNSUITABLE MATERIAL BELOW PLAN BEDDING GRADE WILL BE PAID FOR SEPARATELY.

CONCRETE COLLAR FOR CONNECTING A PROPOSED STORM SEWER TO AN EXISTING STORM SEWER WILL NOT BE PAID FOR SEPARATELY BUT SHALL BE INCLUDED IN THE COST OF THE PROPOSED STORM SEWER.

ALL DIMENSIONS ARE IN INCHES (MILLIMETERS) UNLESS OTHERWISE SHOWN.

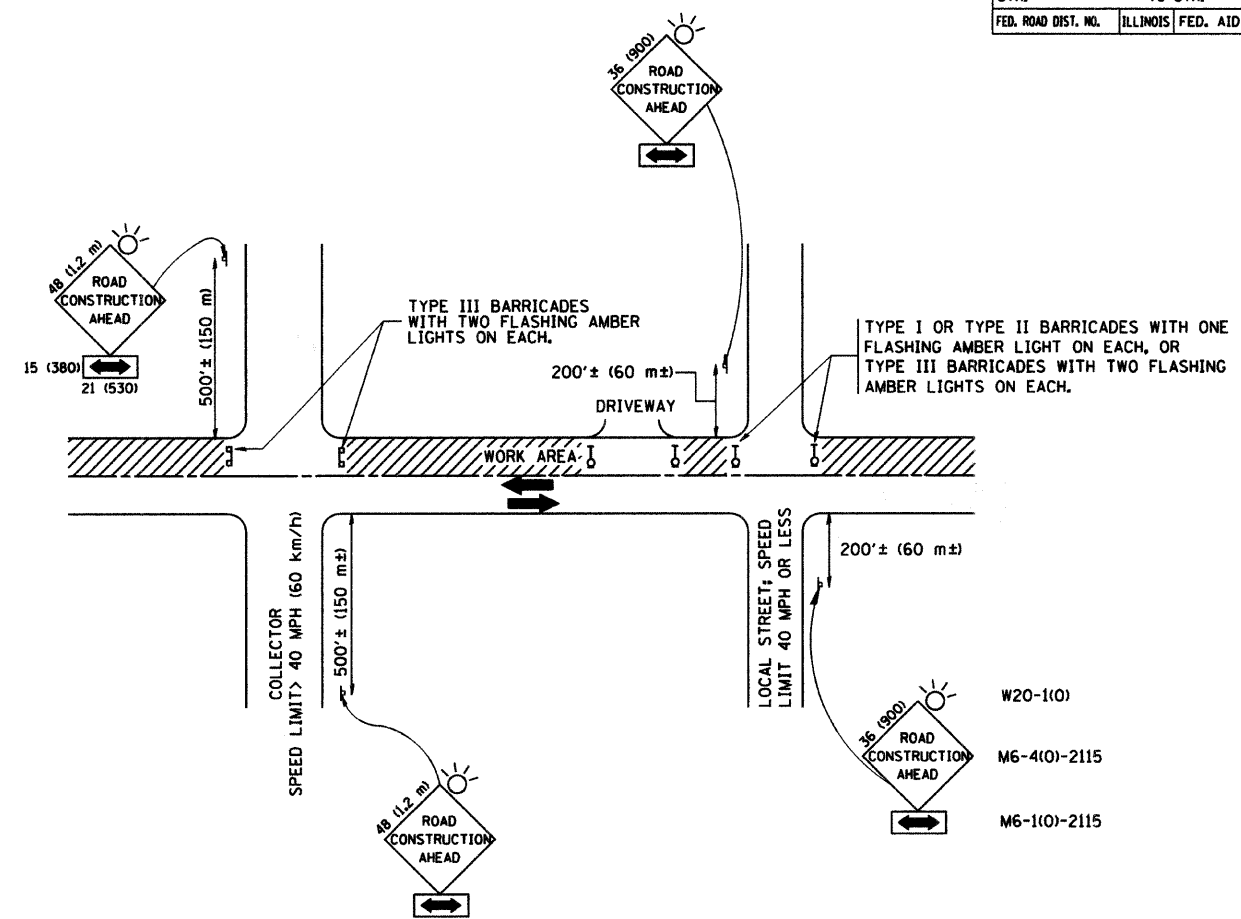
REVISIONS	
NAME	DATE
M. DE YONG	07/25/90
M. DE YONG	02/05/92
M. DE YONG	05/08/92
R. SHAH	09/09/94
R. SHAH	10/25/94
R. SHAH	06/12/96

ILLINOIS DEPARTMENT OF TRANSPORTATION
DETAIL OF STORM SEWER
CONNECTION TO EXISTING SEWER

SCALE: VERT. NONE
HORIZ.

DRAWN BY
CHECKED BY

F.A. RTE.	SECTION	COUNTY	TOTAL SHEETS	SHEET NO.
337	Y-T-1	LAKE	6	5
STA.		TO STA.		
FED. ROAD DIST. NO.	ILLINOIS	FED. AID PROJECT		



TRAFFIC CONTROL AND PROTECTION FOR SIDE ROADS, INTERSECTIONS, AND DRIVEWAYS

NOTES:

- A. FOR NO LANE RESTRICTION ON THE SIDE ROAD OR DRIVEWAYS**
- SIDE ROAD WITH A SPEED LIMIT OF 40 MPH (60 km/h) OR LESS AS SHOWN ON THE DRAWING AND AS DIRECTED BY THE ENGINEER:
 - ONE ROAD CONSTRUCTION AHEAD SIGN 36 x 36 (900x900) WITH A FLASHER AND FLAG MOUNTED ON IT APPROXIMATELY 200' (60 m) IN ADVANCE OF THE MAIN ROUTE.
 - THE CLOSED PORTION OF THE MAIN ROUTE SHALL BE PROTECTED BY BLOCKING WITH TYPE I, TYPE II OR TYPE III BARRICADES, 1/3 OF THE CROSS SECTION OF THE CLOSED PORTION.
 - SIDE ROAD WITH A SPEED LIMIT GREATER THAN 40 MPH (60 km/h) AS SHOWN ON THE DRAWING AND AS DIRECTED BY THE ENGINEER:
 - ONE ROAD CONSTRUCTION AHEAD SIGN 48 x 48 (1.2 m x 1.2 m) WITH A FLASHER MOUNTED ON IT APPROXIMATELY 500' (150 m) IN ADVANCE OF THE MAIN ROUTE.
 - THE CLOSED PORTION OF THE MAIN ROUTE SHALL BE PROTECTED BY BLOCKING WITH TYPE III BARRICADES, 1/2 OF THE CROSS SECTION OF THE CLOSED PORTION.
 - WHEN THE SIDE ROAD LIES BETWEEN THE BEGINNING OF THE MAINLINE SIGNING AND THE WORK ZONE, A SINGLE HEADED ARROW (M6-1) SHALL BE USED IN LIEU OF THE DOUBLE HEADED ARROW (M6-4).
- B. FOR A LANE CLOSURE ON A SIDE ROAD OR DRIVEWAY:**
- USE APPLICABLE PORTIONS OF THE TYPICAL APPLICATION OF TRAFFIC CONTROL DEVICES (STD. 701501, STD. 701606 OR THE APPROPRIATE STANDARD). THE SPACING OF SIGNS AND BARRICADES SHALL BE ADJUSTED FOR FIELD CONDITIONS AS DIRECTED BY THE ENGINEER. THE DIRECTIONAL ARROW SHALL BE COVERED OR REMOVED WHEN NO LONGER CONSISTENT WITH THE SIDE ROAD LANE CLOSURE.
- C. ADVANCE WARNING SIGNS ARE TO BE OMITTED ON DRIVEWAY UNLESS OTHERWISE NOTED.**
- D. THE TRAFFIC CONTROL AND PROTECTION FOR SIDE ROADS, INTERSECTIONS, AND DRIVEWAYS SHALL BE INCIDENTAL TO THE COST OF SPECIFIED TRAFFIC CONTROL STANDARDS OR ITEMS.**

All dimensions are in millimeters (inches) unless otherwise shown.

REVISIONS	
NAME	DATE
LHA	6/89
T. RAMMACHER	09/08/94
J. OBERLE	10/18/95
A. HOUSEH	03/06/96
A. HOUSEH	10/15/96
T. RAMMACHER	01/06/00

ILLINOIS DEPARTMENT OF TRANSPORTATION
 TRAFFIC CONTROL AND PROTECTION
 FOR
 SIDE ROADS, INTERSECTIONS, AND
 DRIVEWAYS

SCALE: NONE
 DRAWN BY
 CHECKED BY

PLOT DATE = 7/6/2007
 FILE NAME = N:\v\asax\lci\lci.dgn
 PLOT SCALE = 1/8" = 1'-0"
 USER NAME = bward

F.A.P. RTE.	SECTION	COUNTY	TOTAL SHEETS	SHEET NO.
337	Y-T-1	LAKE	6	6
STA. 110+800		TO STA. 110+875		
FED. ROAD DIST. NO. 1		ILLINOIS FED. AID PROJECT		

FINAL SURVEY	SURVEYED	DATE
NOTE BOOK NO.	PLOTTED	BY
	TEMPLATE	
	AREAS CHECKED	

ORIGINAL SURVEY	SURVEYED	DATE
NOTE BOOK NO.	PLOTTED	BY
	TEMPLATE	
	AREAS CHECKED	

