

STATE OF ILLINOIS  
DEPARTMENT OF TRANSPORTATION

GENERAL NOTES

Plan dimensions and details relative to existing plans are subject to nominal construction variations. The Contractor shall field verify existing dimensions and details affecting new construction and make necessary approved adjustments prior to construction or ordering of materials. Such variations shall not be cause for additional compensation for a change in scope of the work, however, the Contractor will be paid for the quantity actually furnished at the unit price bid for the work.

Any damage done to the bridge during beam removal shall be repaired by the Contractor. Cost to be included in the cost of Removal of Existing PPC Deck Beams.

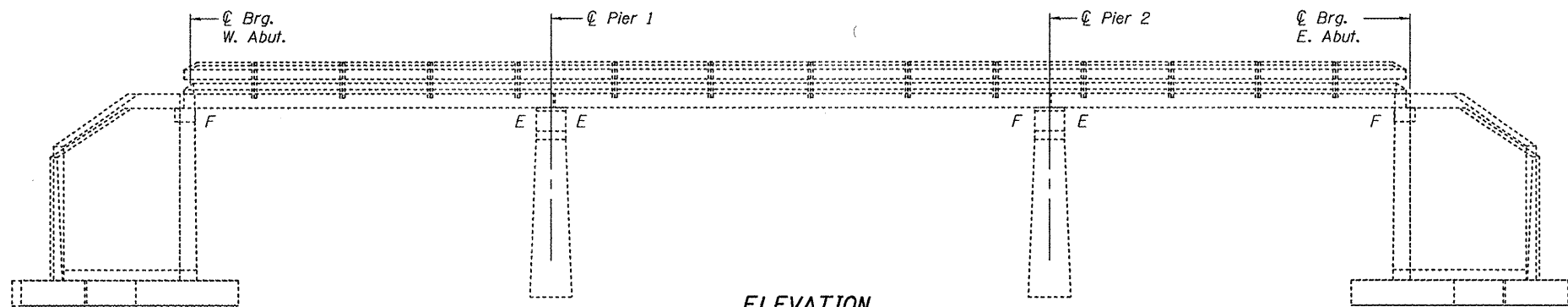
Temporary concrete barrier shall only be anchored into the overlay and not the PPC Deck Beams.

The cut strands at each beam end shall be given two coats of zinc dust spray or paint meeting the requirements of ASTM A780. The zinc dust spray or paint shall be applied before corrosion appears and allowed to dry according to manufacturer's specifications prior to another coat of zinc. This work shall be performed by the producer and included with the cost of the beam.

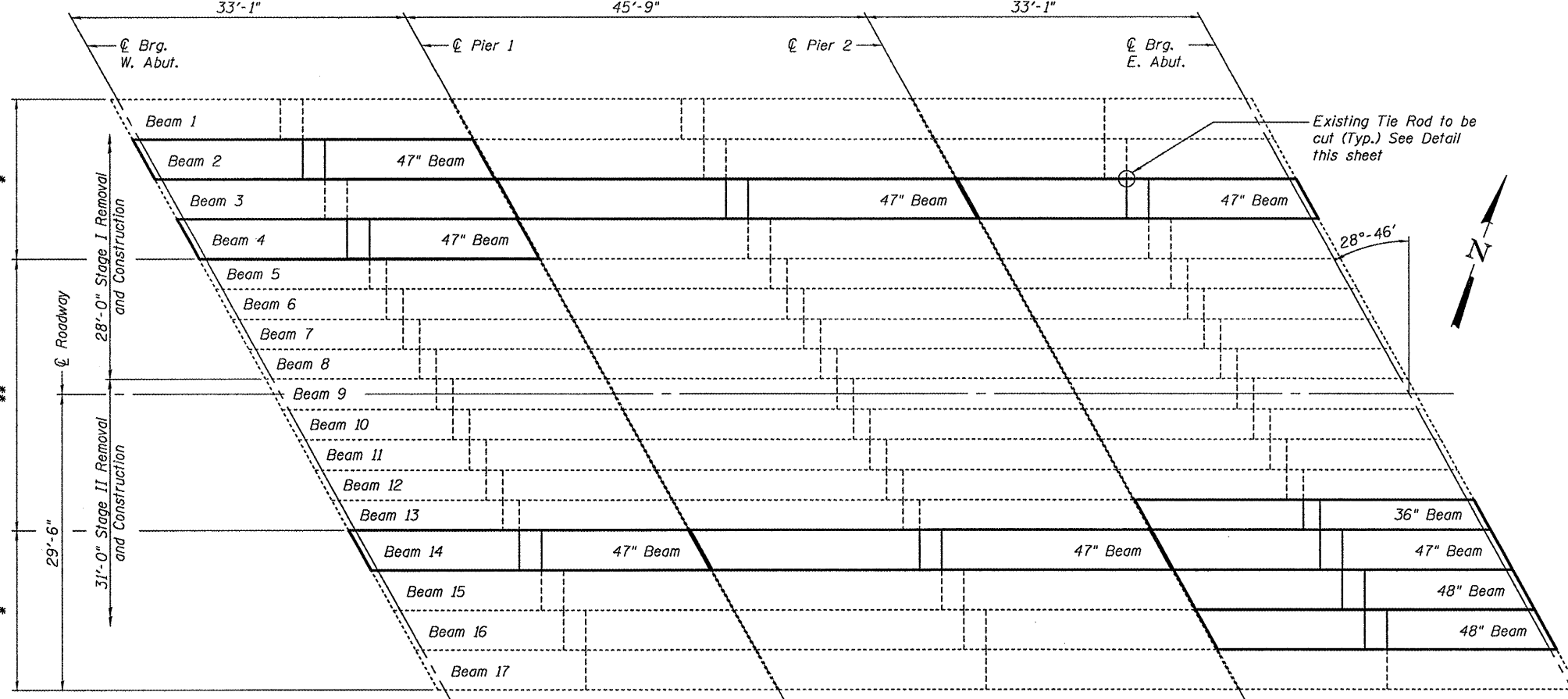
The contractor is advised that the existing PPC Deck Beams are in a deteriorated condition with reduced load carrying capacity. It is the contractors responsibility to account for the condition of the beams when developing construction procedures.

If the contractor's procedure for existing beam removal or placement of new beams involves placement of cranes or other heavy equipment on the bridge, a detailed procedure shall be submitted to the Engineer for approval. The procedure shall include calculations, prepared and sealed by an Illinois Licensed Structural Engineer, verifying that the equipment and procedure used will not overstress the new or existing beams. To distribute load to multiple beams and protect the existing surface, in all cases a double layer mat of heavy timbers shall be used at all times under crane tracks or wheels and any outriggers in the down position. If necessary, shims shall be used under the crane mat to ensure uniform contact with the underlying beams. If heavy equipment will be placed on new PPC deck beams, the following shall be done prior to placement of the timber mats: placement and tightening of transverse tie assemblies, grouting and curing the dowel rods 24 hours minimum and grouting and curing the shear keys.

All structural steel shall be shop painted with the inorganic zinc rich primer per AASHTO M300, Type 1. Cost included with PPC Deck Beams



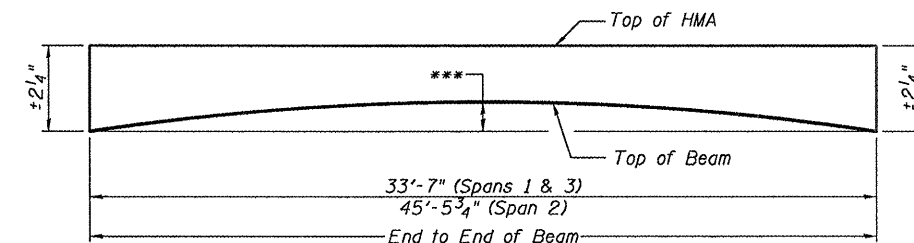
ELEVATION



PLAN

\*4-17"x48" Beams at 4'-0" = 16'-0" Spans 1 & 3  
4-21"x48" Beams at 4'-0" = 16'-0" Span 2

\*\*9-17"x36" Beams at 3'-0" = 27'-0" Spans 1 & 3  
9-21"x36" Beams at 3'-0" = 27'-0" Span 2



ANTICIPATED INITIAL CAMBER DIAGRAM

\*\*\* 5/8" (17"x36" Beams Spans 1 & 3)  
1/2" (17"x48" Beams Spans 1 & 3)  
7/8" (21"x48" Beams Span 2)

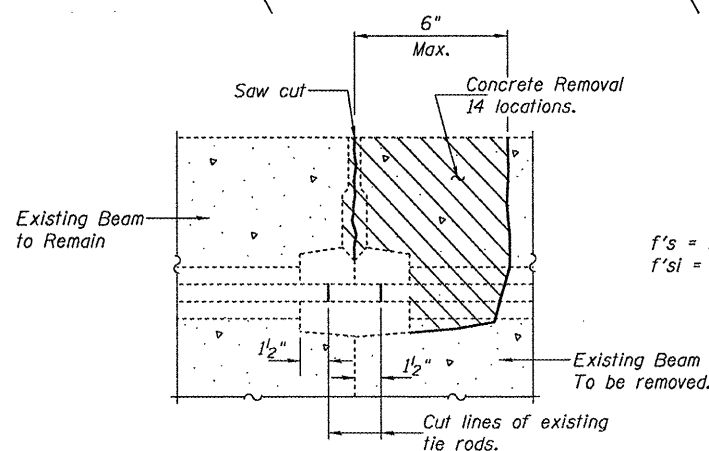
TOTAL BILL OF MATERIAL

ITEM	UNIT	QUANTITY
Precast Prestressed Concrete Deck Beams (17" Depth)	Sq. Ft.	1,028
Precast Prestressed Concrete Deck Beams (21" Depth)	Sq. Ft.	356
HMA Surface Removal	Sq. Yd.	33
Removal of Existing PPC Deck Beams	Sq. Ft.	1,405
HMA Surface Course, Mix "D" N50	Ton	21
PC Mortar Fairing Course	Foot	620
Waterproofing Membrane System	Sq. Yd.	189
Silicone Joint Sealer	Foot	135
Asbestos Bearing Pad Removal	Each	10

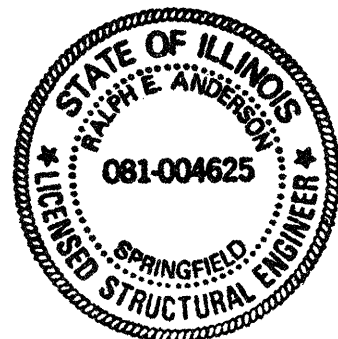
DESIGN STRESSES

PRECAST UNITS

$f'_c = 6,000$  psi  
 $f'_{ci} = 5,000$  psi  
 $f'_s = 270,000$  psi (1/2"  $\phi$  low lax strands)  
 $f'_{si} = 201,960$  psi (1/2"  $\phi$  low lax strands)



BEAM REMOVAL DETAIL  
AT TRANSVERSE TIES



Expires: November 30, 2010

DESIGNED	Alan T. Holloway	APRIL 28, 2009	EXAMINED	Ralph E. Anderson
CHECKED	Victor H. Kelly		PASSED	Ralph E. Anderson
DRAWN	[Signature]			
CHECKED	AJH			

PLAN AND ELEVATION

SN 022-0054

SHEET NO. 1 5 SHEETS	F.A.P. RTE. 0365	SECTION 2004-037 I	COUNTY DuPage	TOTAL SHEETS 20	SHEET NO. 8
	CONTRACT NO. 60G58			FED. ROAD DIST. NO. ILLINOIS FED. AID PROJECT	