

ROUTE	SECTION	COUNTY	TOTAL SHEETS	SHEET NUMBER
FAP 365	2009-045 I	DUPAGE	20	1

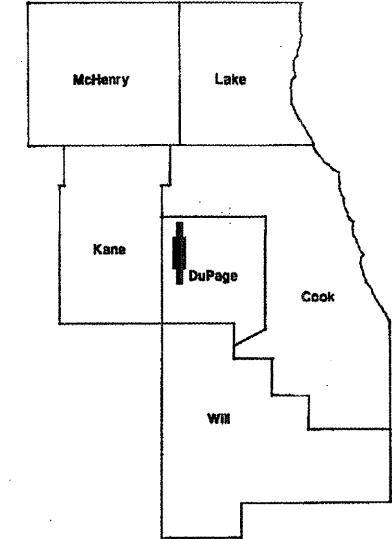
FOR INDEX OF SHEETS SEE SHEET 2

CONTRACT NO. 60G58

IMPROVEMENT IS LOCATED IN THE VILLAGE OF WARRENVILLE

STATE OF ILLINOIS  
DEPARTMENT OF TRANSPORTATION  
DIVISION OF HIGHWAYS  
DISTRICT ONE  
**PROPOSED HIGHWAY PLANS**

D-91-509-09



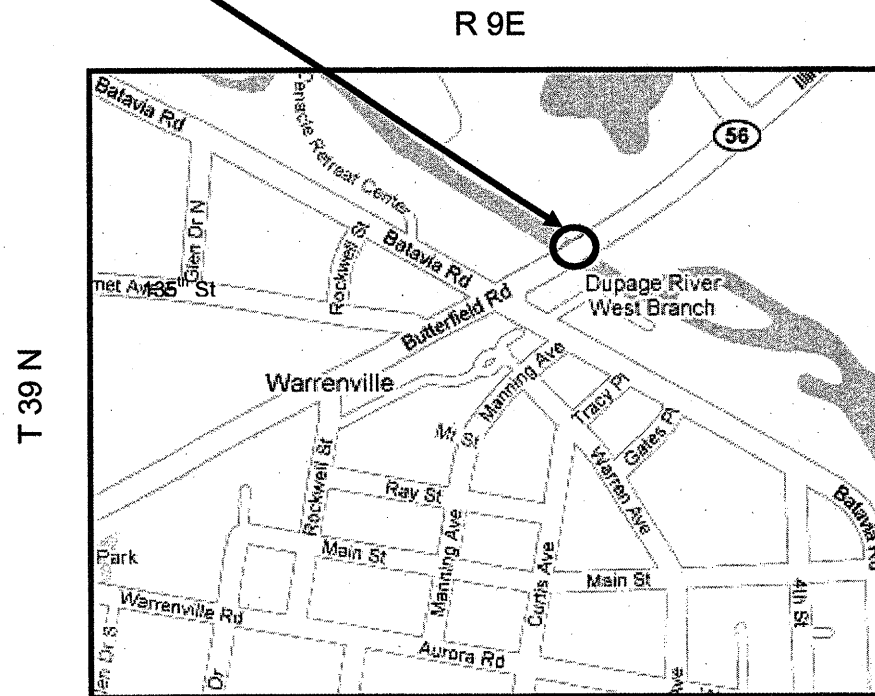
LOCATION OF IMPROVEMENT:  
IL 56 OVER WEST BRANCH  
DUPAGE RIVER

FAP ROUTE 365: IL 56  
OVER WEST BRANCH DUPAGE RIVER  
(SN 022-0054)  
SECTION 2009-045 I  
PPC DECK BEAM REPLACEMENT  
DUPAGE COUNTY  
C-91-509-09

LOCATION OF IMPROVEMENT INDICATED THUS:

**TRAFFIC DATA:**

POSTED SPEED LIMIT = 55 MPH  
2001 ADT = 13,800



WINFIELD TOWNSHIP



STATE OF ILLINOIS  
DEPARTMENT OF TRANSPORTATION  
DIVISION OF HIGHWAYS  
SUBMITTED: APRIL 7 2009  
*Diane M. O'Keefe*  
DEPUTY DIRECTOR OF HIGHWAYS, REGION ENGINEER  
May 8, 2009  
*Charles J. Ingersoll*  
ENGINEER OF DESIGN AND ENVIRONMENT  
May 8, 2009  
*Christine M. Reed*  
DIRECTOR, DIVISION OF HIGHWAYS

PRINTED BY THE AUTHORITY  
OF THE STATE OF ILLINOIS

J.U.L.I.E.: JOINT UTILITY LOCATION  
INFORMATION FOR EXCAVATION  
(800) 892-0123 OR 811

PROJECT ENGINEER ROBERT BORO (847) 705-4178  
PROJECT MANAGER KEN ENG

CONTRACT NO. 60G58

ROUTE	SECTION	COUNTY	TOTAL SHEETS	SHEET NUMBER
FAP 365	2009-045 I	DUPAGE	20	2

CONTRACT 60G58

**INDEX OF SHEETS**

**STATE STANDARDS**

1	TITLE SHEET	701006-03	OFF RD. OPERATIONS, 2L, 2W, 4.5m (15') TO 600 mm (24") FROM PAVEMENT EDGE
2	INDEX OF SHEETS, STATE STANDARDS		
3	GENERAL NOTES	701301-03	LANE CLOSURE, 2L, 2W, SHORT TIME OPERATIONS
4-5	SUMMARY OF QUANTITIES	701901-01	TRAFFIC CONTROL DEVICES
6-7	GENERAL PLAN & ELEVATION	704001-05	TEMPORARY CONCRETE BARRIER
8-12	BRIDGE PLANS (SN 022-0054)	780001-02	TYPICAL PAVEMENT MARKINGS
13-15	TRAFFIC CONTROL STAGING PLANS		
16	FINAL PAVING MARKING PLAN		
17	TRAFFIC CONTROL AND PROTECTION FOR SIDE ROADS, INTERSECTIONS AND DRIVEWAYS (TC-10)		
18	TYPICAL APPLICATIONS RAISED REFLECTIVE PAVEMENT MARKERS (SNOW-PLOW RESISTANT) (TC-11)		
19	DISTRICT ONE TYPICAL PAVEMENT MARKINGS (TC-13)		
20	ARTERIAL ROAD INFORMATION SIGN (TC-22)		

ILLINOIS DEPARTMENT OF TRANSPORTATION

INDEX OF SHEETS  
STATE STANDARDS  
BITUMINOUS MIXTURE REQUIREMENTS

ROUTE	SECTION	COUNTY	TOTAL SHEETS	SHEET NUMBER
FAP 365	2009-045 I	DUPAGE	20	3

**GENERAL NOTES**

**CONTRACT 60G58**

BEFORE STARTING ANY EXCAVATION, THE CONTRACTOR SHALL CALL "JULIE" (JOINT UTILITY LOCATION INFORMATION FOR EXCAVATION) AT 800-892-0123 OR 811 FOR FIELD LOCATIONS OF BURIED ELECTRIC, TELEPHONE & GAS FACILITIES. (48 HOURS NOTIFICATION REQUIRED)

IT SHALL BE THE CONTRACTOR'S RESPONSIBILITY TO VERIFY ALL DIMENSIONS & CONDITIONS EXISTING IN THE FIELD PRIOR TO CONSTRUCTION & ORDERING OF MATERIALS.

THE CONTRACTOR WILL NOT BE ALLOWED TO SET UP A YARD OR FIELD OFFICE ON STATE OR TOLLWAY PROPERTY WITHOUT WRITTEN PERMISSION FROM THE DEPARTMENT.

ALL DAMAGE TO EXISTING PAVEMENT MARKINGS OR RAISED REFLECTIVE PAVEMENT MARKERS OUTSIDE THE REMOVAL LINE SHOWN ON THE PLANS SHALL BE REPLACED AT THE CONTRACTOR'S EXPENSE.

BEFORE BEGINNING ANY WORK, THE CONTRACTOR SHALL RETAIN AND RECORD (FOR FUTURE REFERENCES), ALL EXISTING PAVEMENT MARKING LINES AND RAISED REFLECTIVE PAVEMENT MARKERS IN ORDER THAT THESE LOCATIONS CAN BE RE-ESTABLISHED FOR STRIPING. EXACT LOCATIONS OF ALL STRIPING SHALL BE AS DIRECTED BY THE ENGINEER.

THE CONTRACTOR SHALL CONTACT THE DISTRICT ONE TRAFFIC CONTROL SUPERVISOR AT (847) 705-4470 A MINIMUM OF 72 HOURS IN ADVANCE OF BEGINNING WORK.

THESE PLANS HAVE BEEN PREPARED FROM NOTES RECEIVED FROM MAINTENANCE BRIDGE INSPECTORS.

THE CONTRACTOR SHALL BE REQUIRED TO PROVIDE ACCESS TO ABUTTING PROPERTY AT ALL TIMES DURING THE CONSTRUCTION OF THIS PROJECT.

THE ENGINEER SHALL CONTACT DON CHIARUGI, AREA TRAFFIC FIELD ENGINEER, AT (847) 741-9857 A MINIMUM OF TWO (2) WEEKS PRIOR TO THE PLACEMENT OF PERMANENT PAVEMENT MARKINGS.

THE THICKNESS OF THE HMA MIXTURE SHOWN ON THE PLANS IS THE NOMINAL THICKNESS. DEVIATIONS FROM THE NOMINAL THICKNESS WILL BE PERMITTED WHEN SUCH DEVIATIONS OCCUR DUE TO IRREGULARITIES IN THE EXISTING SURFACE OR BASE ON WHICH THE HMA MIXTURE IS PLACED.

THE CONTRACTOR SHALL COORDINATE CONSTRUCTION ACTIVITIES WITH UTILITY COMPANIES AND THE CITY OF WARRENVILLE.

HMA MIXTURE REQUIREMENTS		
MIXTURE TYPE	AC TYPE	AIR VOIDS
HOT-MIX ASPHALT SURFACE COURSE, MIX "D", N50 (IL 9.5 mm)	PG 64 -22	4% @ 50 GYR

**NOTE:** THE UNIT WEIGHT USED TO CALCULATE ALL HOT-MIX ASPHALT SURFACE MIXTURES IS 112 LBS/SQ YD / IN

ILLINOIS DEPARTMENT OF TRANSPORTATION
<b>GENERAL NOTES</b>

<b>ROUTE</b>	<b>SECTION</b>	<b>COUNTY</b>	<b>TOTAL SHEETS</b>	<b>SHEET NUMBER</b>
FAP 365	2009-045 I	DUPAGE	20	4

CONTRACT 60G58

**SUMMARY OF QUANTITIES**

*URBAN  
100% STATE*

CODE NUMBER	DESCRIPTION	UNIT	CONSTRUCTION TYPE CODE SFTY-2A
			TOTAL
40603335	HOT-MIX ASPHALT SURFACE COURSE, MIX "D", N50	TON	21
44001005	HOT-MIX ASPHALT SURFACE REMOVAL	SQ YD	33
50400305	PRECAST PRESTRESSED CONCRETE DECK BEAMS (17" DEPTH)	SQ FT	1028
50400405	PRECAST PRESTRESSED CONCRETE DECK BEAMS (21" DEPTH)	SQ FT	356
58100200	WATERPROOFING MEMBRANE SYSTEM	SQ YD	189
58300100	PORTLAND CEMENT MORTAR FAIRING COURSE	FOOT	620
67000400	ENGINEER'S FIELD OFFICE, TYPE A	CAL MO	3
67100100	MOBILIZATION	L SUM	1
70101800	TRAFFIC CONTROL AND PROTECTION,(SPECIAL)	L SUM	1
70400100	TEMPORARY CONCRETE BARRIER	FOOT	238
70400200	RELOCATE TEMPORARY CONCRETE BARRIER	FOOT	238

ILLINOIS DEPARTMENT OF TRANSPORTATION

**SUMMARY OF QUANTITIES**  
(SHEET 1 OF 2)

<b>ROUTE</b>	<b>SECTION</b>	<b>COUNTY</b>	<b>TOTAL SHEETS</b>	<b>SHEET NUMBER</b>
FAP 365	2009-045I	DUPAGE	20	5

CONTRACT 60658

**SUMMARY OF QUANTITIES**

URBAN  
100% STATE

CODE NUMBER	DESCRIPTION	UNIT	CONSTRUCTION TYPE
			CODE SFTY-2A
			TOTAL
* 78000200	THERMOPLASTIC PAVEMENT MARKING – LINE 4"	FOOT	3100
* 78000600	THERMOPLASTIC PAVEMENT MARKING – LINE 12"	FOOT	220
* 78100300	REPLACEMENT REFLECTOR	EACH	40
78300100	PAVEMENT MARKING REMOVAL	SQ FT	1189
X0301424	SILICONE JOINT SEALER	FOOT	135
X0320047	REMOVAL OF EXISTING PRECAST PRESTRESSED CONCRETE DECK BEAMS	SQ FT	1405
X0322256	TEMPORARY INFORMATION SIGNING	SQ FT	102.8
X0325775	WET REFLECTIVE TEMPORARY TAPE, TYPE III, 4 INCH	FOOT	3530
Z0001900	ASBESTOS BEARING PAD REMOVAL	EACH	10
Z0030250	IMPACT ATTENUATORS, TEMPORARY (NON- REDIRECTIVE), TEST LEVEL 3	EACH	2
Z0030350	IMPACT ATTENUATORS, RELOCATE (NON- REDIRECTIVE), TEST LEVEL 3	EACH	2

\*Specialty Items

ILLINOIS DEPARTMENT OF TRANSPORTATION  
  
SUMMARY OF QUANTITIES  
(SHEET 2 OF 2)

ROUTE FAP 365	SECTION 2004-037 I	COUNTY DUPAGE	TOTAL SHEETS 20	SHEET NUMBER 6
------------------	-----------------------	------------------	--------------------	-------------------

CONTRACT 62774

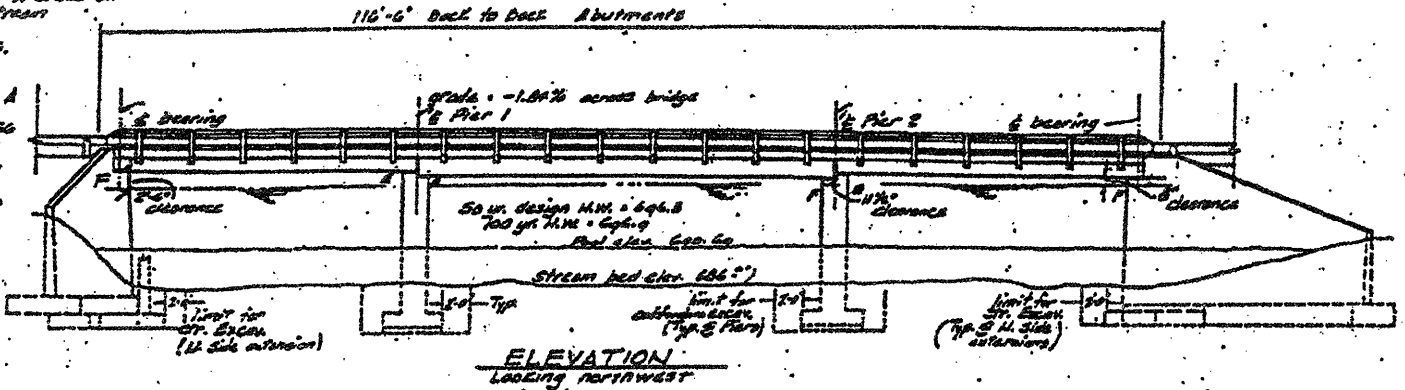
BM - BM16 (Corps designation T.D.M. 23-01. A cross on top of a cut-off 8" bolt on left bank upstream side of concrete abutment of abandoned railroad bridge 200' downstream of Ill. 56. Elevation = 702.47

BM - BM17 (Corps designation T.D.M. 22-01. A square cut on top of abutment of the right bank upstream corner of the Ill. 56 Bridge. Elevation = 701.16

Existing Structure: 3-span cant. haunched corr. steel girder, on 2 piers, 200' long, 20' high, 1' wide corr. piers. Separators to be removed, abuts / piers widened.

CURVE DATA - SURVEY LINE

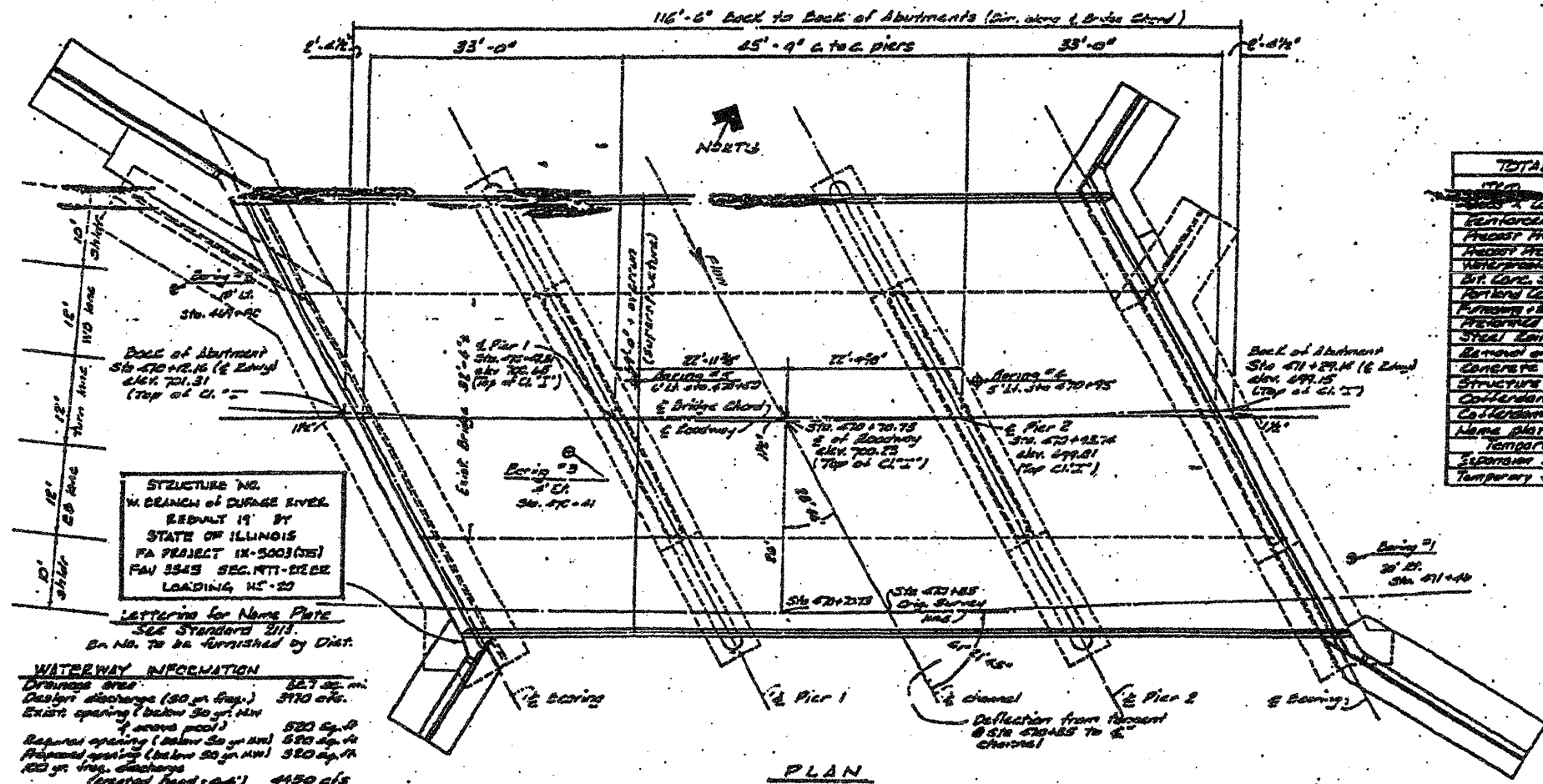
A = 14° 25'	RC = 427+25.59
B = 23A.25	RI = 475+31.70
T = 206.11	RT = 483+21.20
Q = 00° 55' 00"	SE = 0.0185 1/1



- GENERAL NOTES:**
1. For Waterproofing Membrane System, see Sp. Prod.
  2. For boring data, see Bidding Proposal.
  3. Ditch walls shall conform to M.S.D.T.D. 11-31 or 11-33, 6' to 6' 6".
  4. It shall be the responsibility of the Contractor to verify all dimensions and conditions in the field prior to construction and ordering materials.
  5. Item "Removal of Existing Superstructure" shall be in accordance with Article 301.02 of the Std. Specs. Concrete removal of the required portions of the substructure shall be in accordance with Article 301.03 of the Std. Specs.
  6. The cost of pavement removal, removal of approaches including 50' of facing on approaches, at traffic control, same as approach, shall be included in the Bid.
  7. Item "Structure Excavation" shall be in accord with Sec. 302 of the Std. Specs, modified. See Spec. Prov.
  8. For traffic control during stage construction, see Special Provisions.
  9. Prepacked Joint Fills, cement paste, and non-metallic water seals at abutments shall be incidental to item "Concrete Removal". Non-metallic seals shall conform to Article 301.02 of the Std. Specs.
  10. Expansion Bolts shall consist of cast-in-place expansion anchors and 1/2" x 18" rods.
  11. Reinforcement Bars shall conform to M.S.D.T.D. 11-31 or 11-33, Std. 36.

**TOTAL BILL OF MATERIAL**

ITEM	Units	Super	Sub	Plan	Total
CONCRETE	cu. yd.	61			61
REINFORCEMENT BARS	lbs.	920			920
PRECAST PRESTRESSED CONC. BE. BRG. 17"	Sq. Ft.	3463			3463
PRECAST PRESTRESSED CONC. BE. BRG. 21"	Sq. Ft.	2689			2689
WATERPROOFING MEMBRANE SYSTEM	Sq. Ft.	757			757
BIT. CONC. SURFACE COURSE, ASPHALT D.C.P.	Sq. Yd.	95			95
PORTLAND CEMENT MORTAR FLOORING CONC.	Sq. Yd.	1763			1763
FORMWORK BRACING STRUCTURAL STEEL	Lbs.	10250			10250
PREPACKED JOINT SEALER 12754	Ln. Ft.	12			12
STEEL BRACING - TYPIC	Ln. Ft.	250			250
REMOVAL OF EXIST. SUPERSTRUCTURE	each	1			1
CONCRETE REMOVAL	cu. yd.		25.7		25.7
STRUCTURE EXCAVATION	cu. yd.		294.0		294.0
COLLENDAMS	each		2		2
COLLENDAM EXCAVATION	cu. yd.		24.6	182.6	207.2
NAME PLATE	each	1			1
TEMPORARY CONCRETE BARRIER	Ln. Ft.	460			460
STANDARD BOLT 1/2" dia. x 12" long	each		106	120	226
Temporary Sheet Piling	Sq. Ft.		450		450



STRUCTURE NO. 116 BRANCH OF DUPAGE RIVER, E. BRANCH 19' BY STATE OF ILLINOIS, PA PROJECT IX-5003 (RIS), FAV 3545 SEC. 171-1122E, LOADING 115-20

LETTERING for Name Plate, SEE Standard 2113, En. No. to be furnished by Dist.

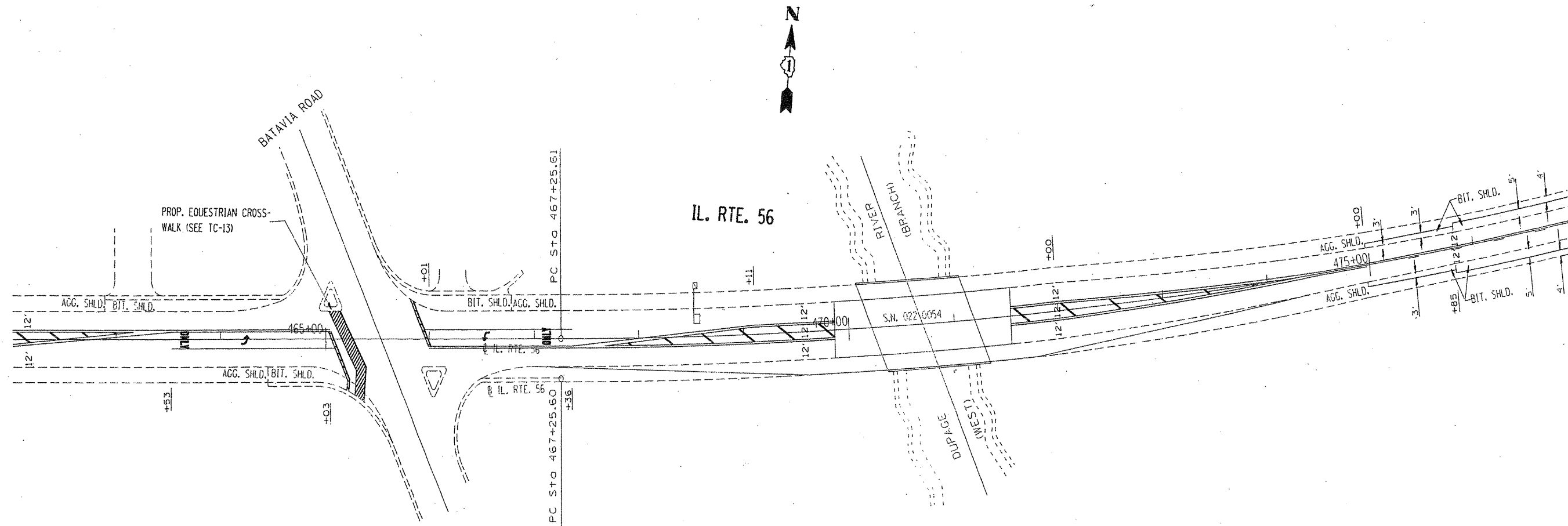
**WATERWAY INFORMATION**

Drainage Area: 527 ac. +/-  
 Design discharge (50 yr. freq.): 5170 cfs.  
 Existing opening (below 50 yr. freq.): 520 sq. ft.  
 Required opening (below 50 yr. freq.): 520 sq. ft.  
 Proposed opening (below 50 yr. freq.): 380 sq. ft.  
 100 yr. freq. discharge (proposed head = 0.4'): 4450 cfs  
 50 yr. freq. proposed head = 0.5'

**FOR INFORMATION ONLY**

ILLINOIS DEPARTMENT OF TRANSPORTATION  
 GENERAL PLAN & ELEVATION  
 IL 56 OVER WEST BRANCH  
 DUPAGE RIVER

F.A.P. RTE.	SECTION	COUNTY	TOTAL SHEETS	SHEET NO.
365	2004-037 I	DUPAGE	20	7



**FOR INFORMATION  
ONLY**

ILLINOIS DEPARTMENT OF TRANSPORTATION

**GENERAL PLAN & ELEVATION  
IL 56 OVER WEST BRANCH  
DUPAGE RIVER**

SCALE: VERT. \_\_\_\_\_  
 HORIZ. \_\_\_\_\_  
 DATE \_\_\_\_\_

DRAWN BY \_\_\_\_\_  
 CHECKED BY \_\_\_\_\_

STATE OF ILLINOIS  
DEPARTMENT OF TRANSPORTATION

GENERAL NOTES

Plan dimensions and details relative to existing plans are subject to nominal construction variations. The Contractor shall field verify existing dimensions and details affecting new construction and make necessary approved adjustments prior to construction or ordering of materials. Such variations shall not be cause for additional compensation for a change in scope of the work, however, the Contractor will be paid for the quantity actually furnished at the unit price bid for the work.

Any damage done to the bridge during beam removal shall be repaired by the Contractor. Cost to be included in the cost of Removal of Existing PPC Deck Beams.

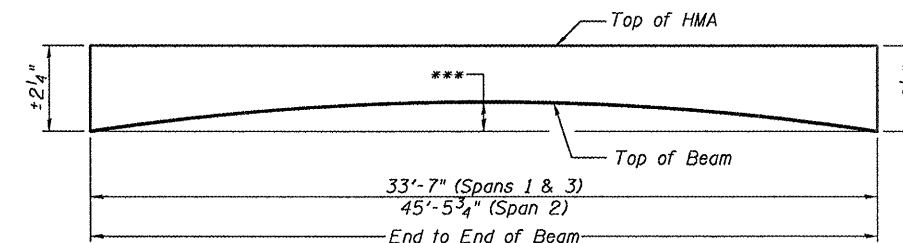
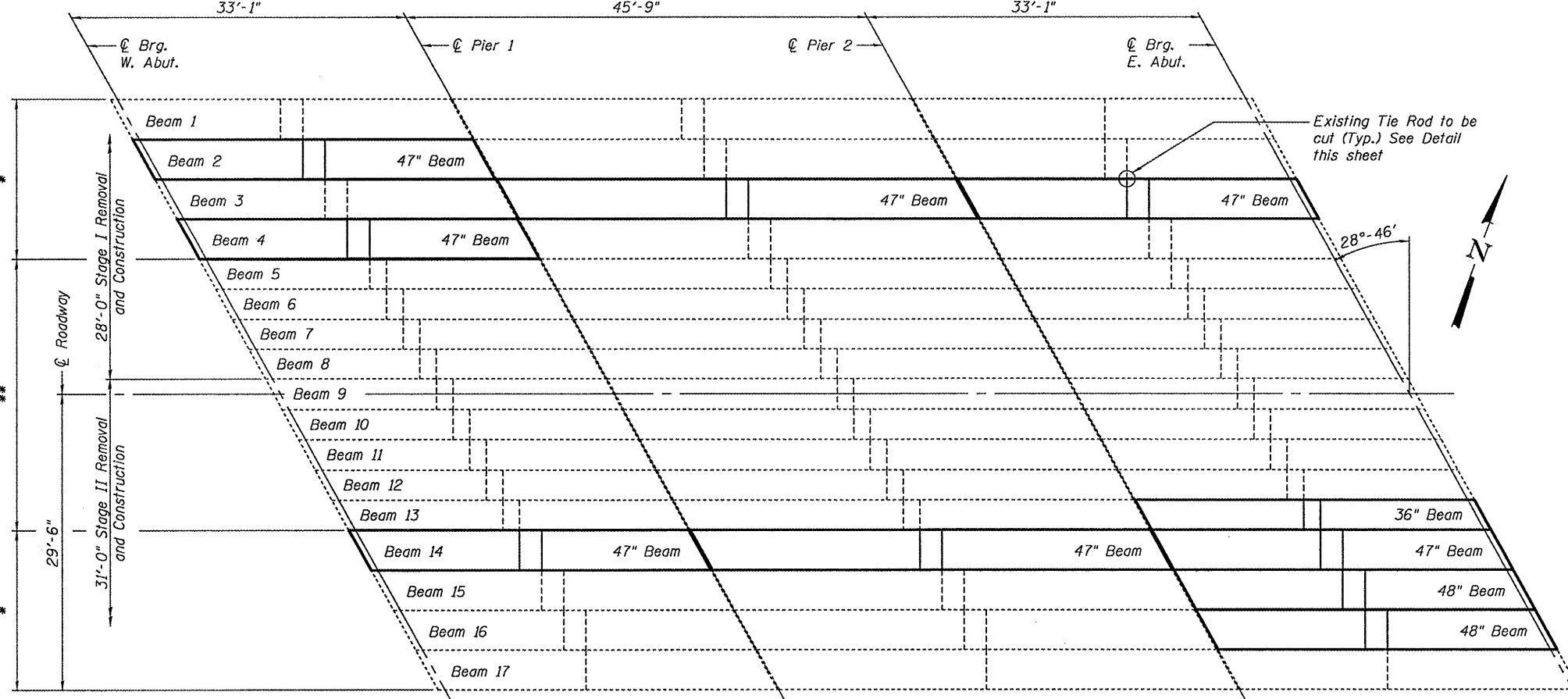
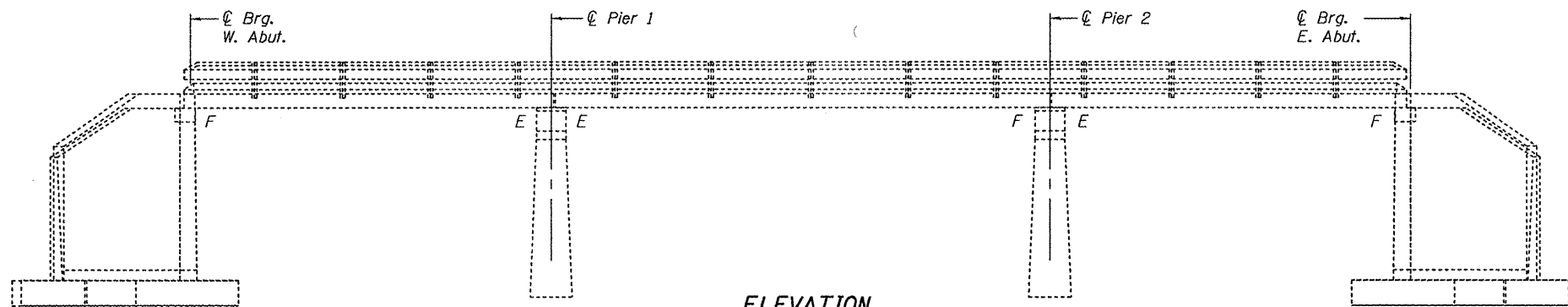
Temporary concrete barrier shall only be anchored into the overlay and not the PPC Deck Beams.

The cut strands at each beam end shall be given two coats of zinc dust spray or paint meeting the requirements of ASTM A780. The zinc dust spray or paint shall be applied before corrosion appears and allowed to dry according to manufacturer's specifications prior to another coat of zinc. This work shall be performed by the producer and included with the cost of the beam.

The contractor is advised that the existing PPC Deck Beams are in a deteriorated condition with reduced load carrying capacity. It is the contractor's responsibility to account for the condition of the beams when developing construction procedures.

If the contractor's procedure for existing beam removal or placement of new beams involves placement of cranes or other heavy equipment on the bridge, a detailed procedure shall be submitted to the Engineer for approval. The procedure shall include calculations, prepared and sealed by an Illinois Licensed Structural Engineer, verifying that the equipment and procedure used will not overstress the new or existing beams. To distribute load to multiple beams and protect the existing surface, in all cases a double layer mat of heavy timbers shall be used at all times under crane tracks or wheels and any outriggers in the down position. If necessary, shims shall be used under the crane mat to ensure uniform contact with the underlying beams. If heavy equipment will be placed on new PPC deck beams, the following shall be done prior to placement of the timber mats: placement and tightening of transverse tie assemblies, grouting and curing the dowel rods 24 hours minimum and grouting and curing the shear keys.

All structural steel shall be shop painted with the inorganic zinc rich primer per AASHTO M300, Type 1. Cost included with PPC Deck Beams



\*\*\* 5/8" (17"x36" Beams Spans 1 & 3)  
1/2" (17"x48" Beams Spans 1 & 3)  
7/8" (21"x48" Beams Span 2)

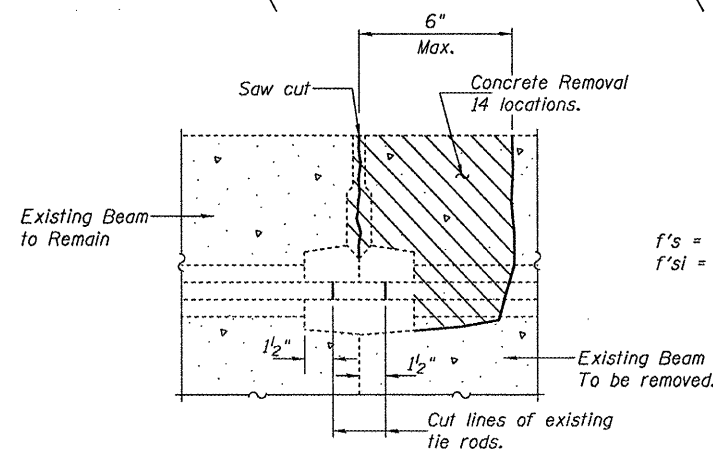
TOTAL BILL OF MATERIAL

ITEM	UNIT	QUANTITY
Precast Prestressed Concrete Deck Beams (17" Depth)	Sq. Ft.	1,028
Precast Prestressed Concrete Deck Beams (21" Depth)	Sq. Ft.	356
HMA Surface Removal	Sq. Yd.	33
Removal of Existing PPC Deck Beams	Sq. Ft.	1,405
HMA Surface Course, Mix "D" N50	Ton	21
PC Mortar Fairing Course	Foot	620
Waterproofing Membrane System	Sq. Yd.	189
Silicone Joint Sealer	Foot	135
Asbestos Bearing Pad Removal	Each	10

DESIGN STRESSES

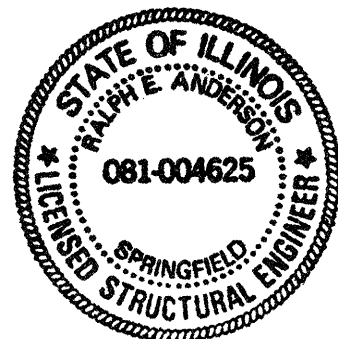
PRECAST UNITS

$f'_c = 6,000$  psi  
 $f'_{ci} = 5,000$  psi  
 $f'_s = 270,000$  psi (1/2"  $\phi$  low lax strands)  
 $f'_{si} = 201,960$  psi (1/2"  $\phi$  low lax strands)



\*4-17"x48" Beams at 4'-0" = 16'-0" Spans 1 & 3  
4-21"x48" Beams at 4'-0" = 16'-0" Span 2

\*\*9-17"x36" Beams at 3'-0" = 27'-0" Spans 1 & 3  
9-21"x36" Beams at 3'-0" = 27'-0" Span 2



DESIGNED	Alan T. Holloway	EXAMINED	April 28, 2009
CHECKED	Victor H. Kelly	PASSED	Ralph E. Anderson
DRAWN	[Signature]		
CHECKED	AJH		

Expires: November 30, 2010

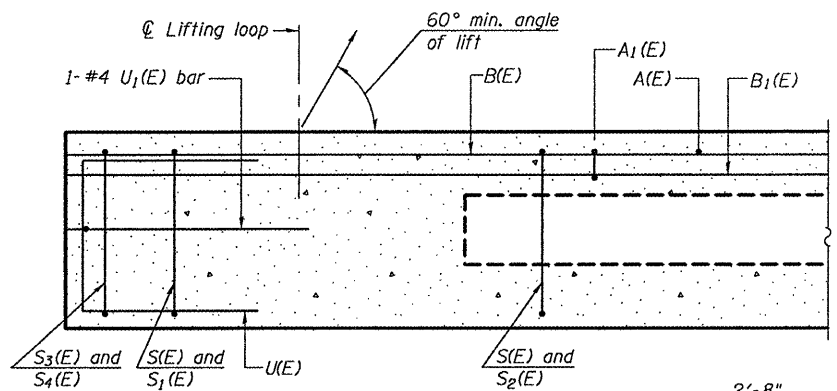
PLAN AND ELEVATION

SN 022-0054

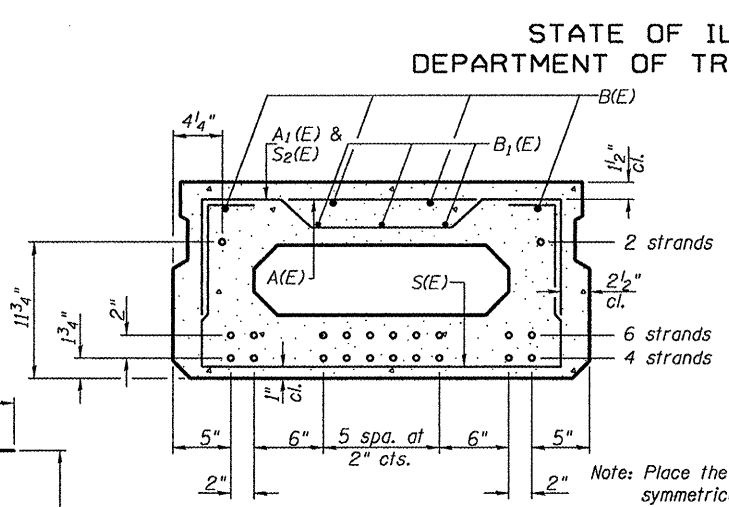
SHEET NO. 1	F.A.P. RTE.	SECTION	COUNTY	TOTAL SHEETS	SHEET NO.
5 SHEETS	0365	2004-037 I	DuPage	20	8
FED. ROAD DIST. NO.			ILLINOIS FED. AID PROJECT		
			CONTRACT NO. 60G58		



STATE OF ILLINOIS  
DEPARTMENT OF TRANSPORTATION

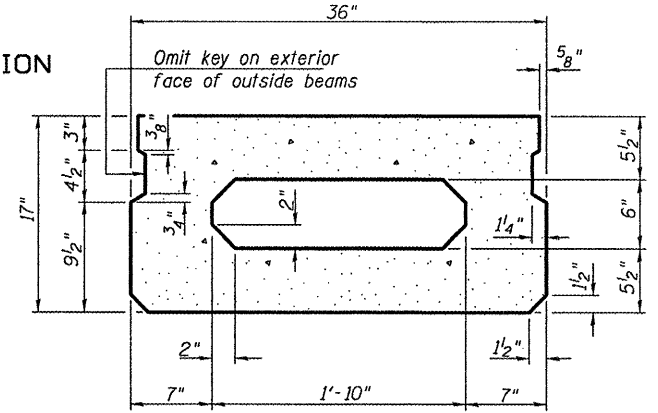


SECTION C-C

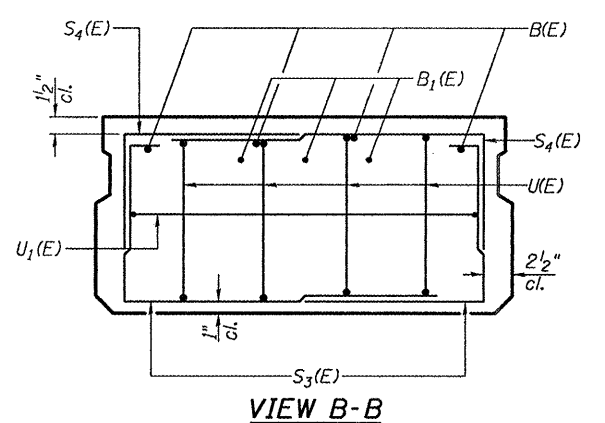


SECTION A-A  
(Showing reinforcement and permissible strand locations)

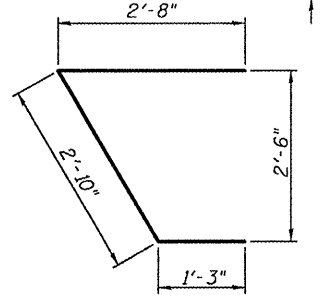
Note: Place the number of strands specified in each row symmetrically about the centerline of beam in the permissible strand locations shown.



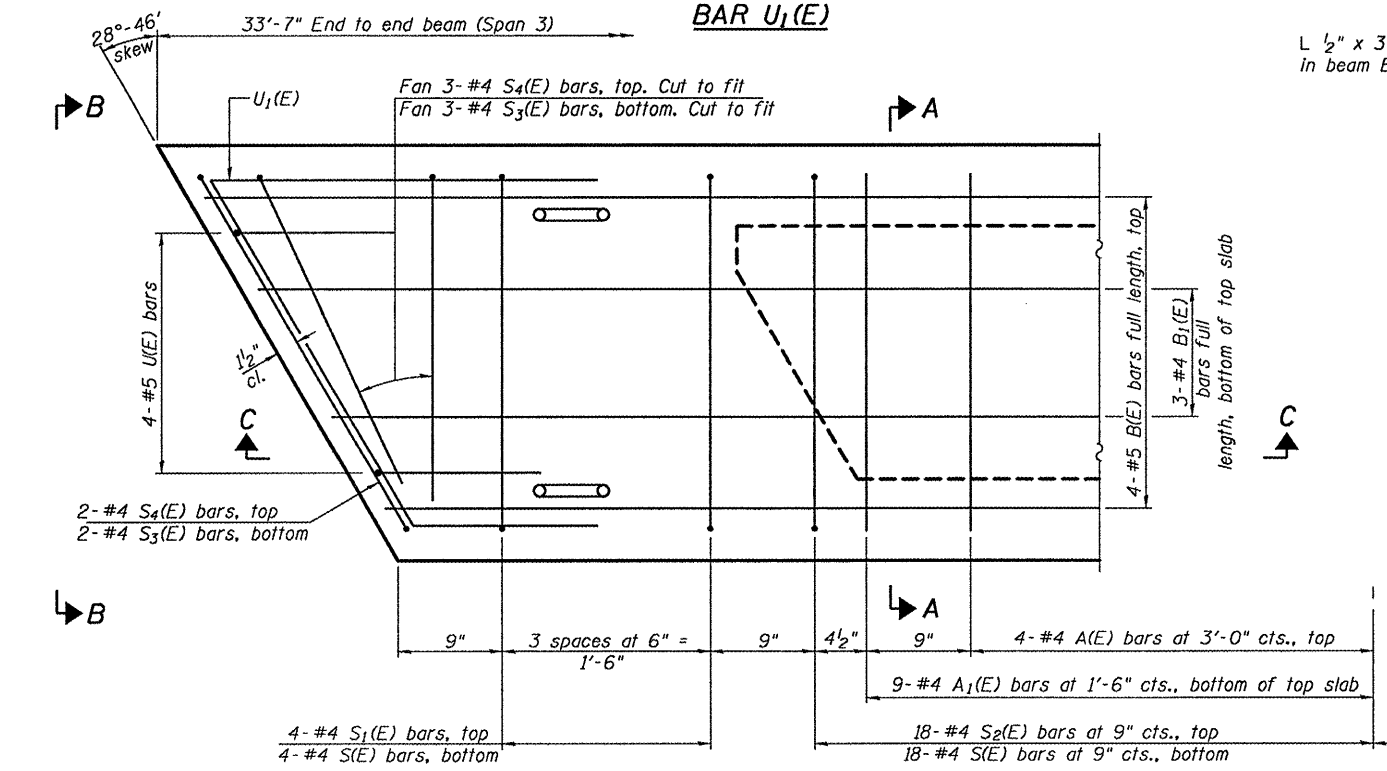
SECTION A-A  
(Showing dimensions)



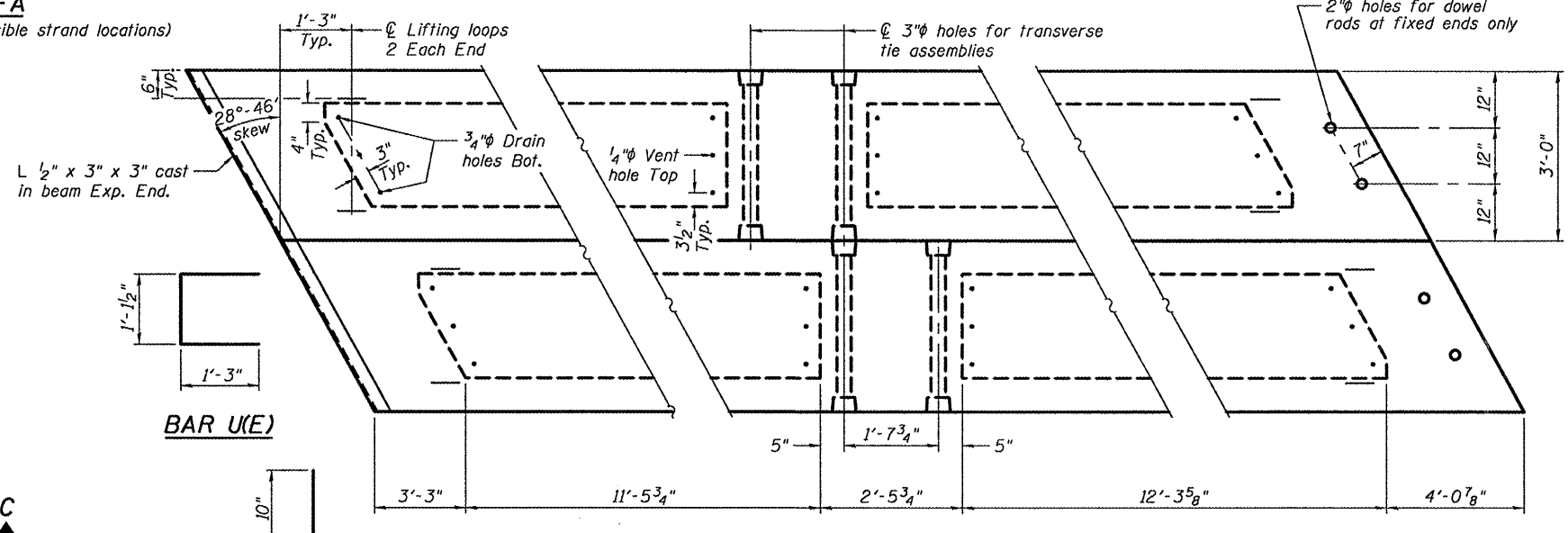
VIEW B-B



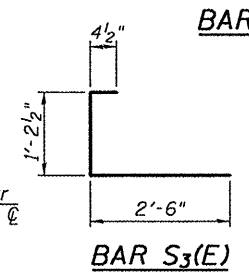
BAR U1(E)



REINFORCEMENT PLAN VIEW

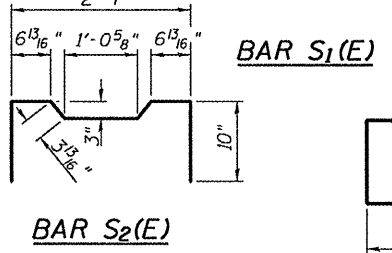


DIMENSION PLAN VIEW



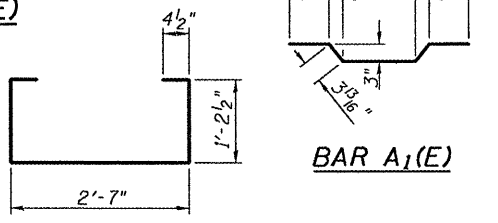
BAR S4(E)

BAR S3(E)



BAR S1(E)

BAR S2(E)



BAR A1(E)

BAR S(E)

**BAR LIST**  
ONE BEAM ONLY  
(For information only)

Bar	No.	Size	Length	Shape
A(E)	8	#4	2'-7"	—
A1(E)	18	#4	2'-10"	—
B(E)	4	#5	33'-4"	—
B1(E)	3	#4	33'-4"	—
S(E)	44	#4	5'-9"	□
S1(E)	8	#4	4'-3"	□
S2(E)	36	#4	4'-6"	□
S3(E)	10	#4	4'-1"	□
S4(E)	10	#4	3'-4"	□
U(E)	8	#5	3'-8"	□
U1(E)	2	#4	6'-9"	□

NOTES

Prestressing steel shall be uncoated high strength, low relaxation 7-wire strand, Grade 270. The nominal diameter shall be 1/2" and the nominal cross-sectional area shall be 0.153 sq. in. The 1" φ rods in the transverse tie assembly shall be tightened to a snug fit and the threads set. Pockets on exterior faces of bridge shall be filled with grout after transverse tie assembly is in place.

Reinforcement bars shall conform to ASTM A 706, Grade 60. (See Special Provisions). Two 1/8" fabric adjusting shims of the dimensions of the exterior bearing pad shall be provided for each bearing pad location.

A minimum 2 1/2" φ lifting pin shall be used to engage the lifting loops during handling. Corrosion Inhibitor, per Article 1020.05(b)(12) and 1021.06 of the Standard Specifications, shall be used in the concrete for precast prestressed concrete deck beams.

Compressive strength of prestressed concrete, f'c, shall be 6000 psi.  
Compressive strength of prestressed concrete at release, f'cr, shall be 5000 psi.

BILL OF MATERIAL

Precast Prestressed Conc. Deck Bms. (17" depth)	Sq. Ft.	101
---	---------	-----

17"x36" BEAM DETAILS

SPAN 3  
SN 022-0054

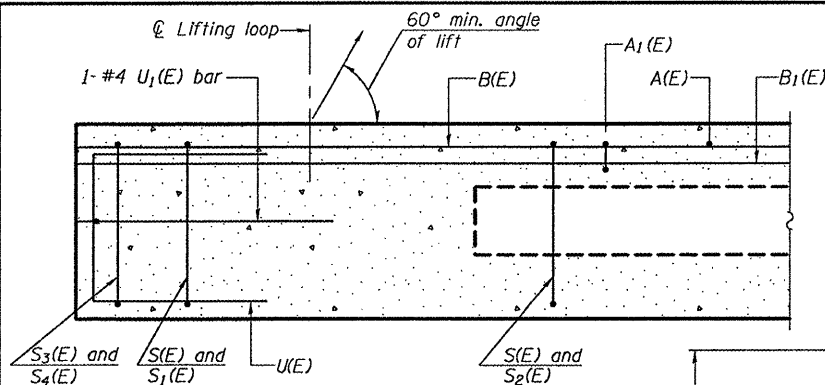
SHEET NO. 2 5 SHEETS	F.A.P. RTE. 0365	SECTION 2004-037 I	COUNTY DuPage	TOTAL SHEETS 20	SHEET NO. 9
	FED. ROAD DIST. NO. ILLINOIS FED. AID PROJECT			CONTRACT NO. 60G58	

DESIGNED	A.T.H.
CHECKED	V.H.V.
DRAWN	Drew Christopher
CHECKED	A.T.H. V.H.V.

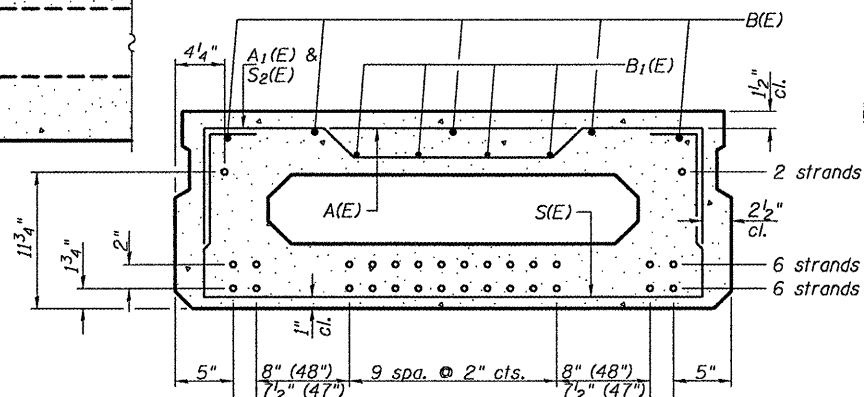
April 28, 2009  
EXAMINED *Carl Perry*  
ENGINEER OF STRUCTURAL SERVICES  
PASSED *Ralph E. Anderson*  
ENGINEER OF BRIDGES AND STRUCTURES

STATE OF ILLINOIS  
DEPARTMENT OF TRANSPORTATION

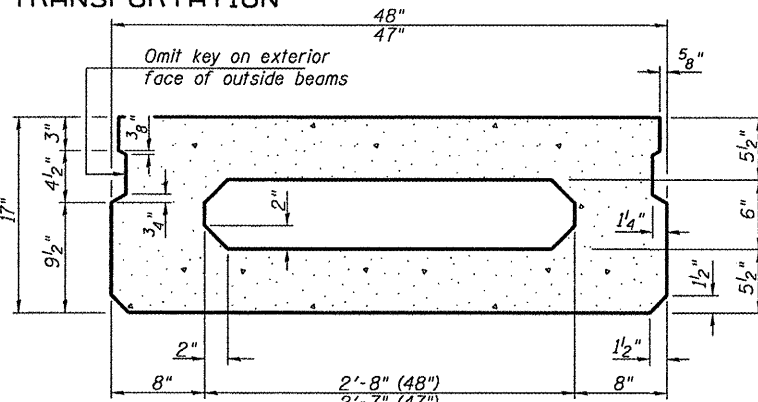
Note: Place the number of strands specified in each row symmetrically about the centerline of beam in the permissible strand locations shown.



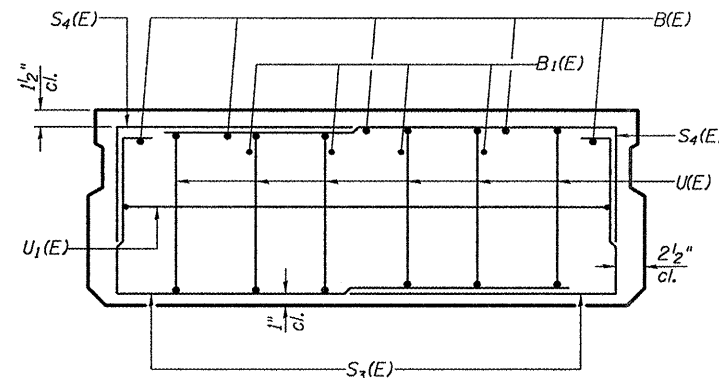
SECTION C-C



SECTION A-A  
(Showing reinforcement and permissible strand locations)



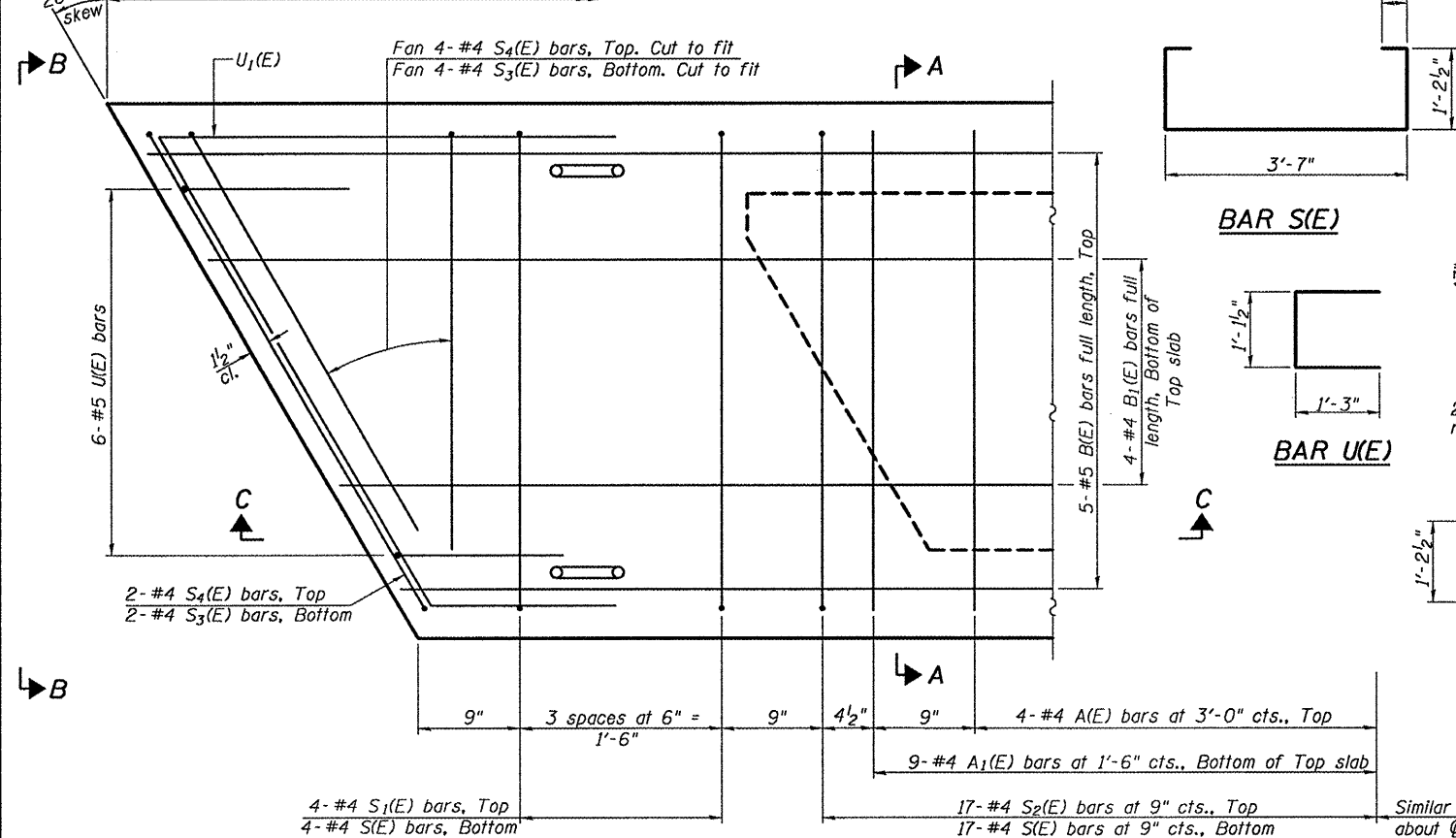
SECTION A-A  
(Showing dimensions)



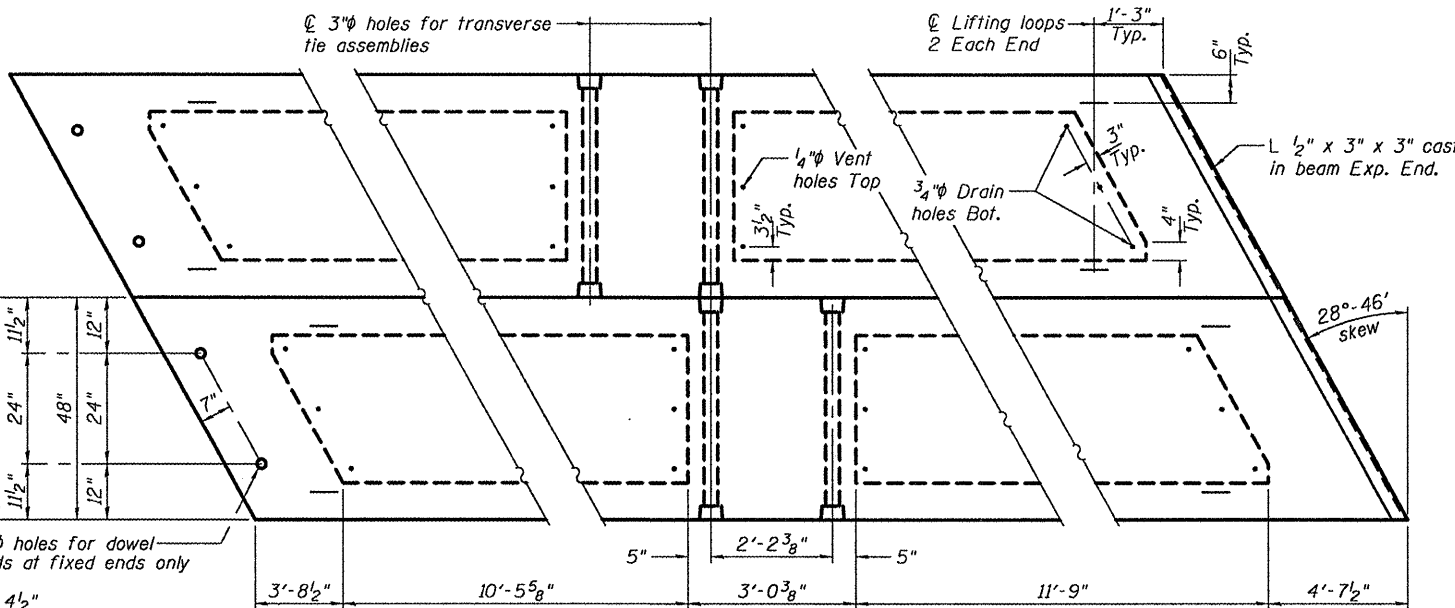
VIEW B-B

BAR S1(E)

28°-46' skew  
33'-7" End to end beam (Spans 1 and 3)



REINFORCEMENT PLAN VIEW



DIMENSION PLAN VIEW

BAR S(E)

BAR U(E)

BAR S3(E)

BAR A1(E)

BAR S4(E)

BAR S2(E)

BAR U1(E)

BAR LIST  
ONE BEAM ONLY  
(For information only)

Bar	No.	Size	Length	Shape
A(E)	8	#4	3'-7"	—
A1(E)	18	#4	3'-10"	—
B(E)	5	#5	33'-4"	—
B1(E)	4	#4	33'-4"	—
S(E)	42	#4	6'-9"	U
S1(E)	8	#4	5'-3"	U
S2(E)	34	#4	5'-6"	U
S3(E)	12	#4	5'-1"	U
S4(E)	12	#4	4'-4"	U
U(E)	12	#5	3'-8"	U
U1(E)	2	#4	8'-5"	U

NOTES

Prestressing steel shall be uncoated high strength, low relaxation 7-wire strand, Grade 270. The nominal diameter shall be 1/2" and the nominal cross-sectional area shall be 0.153 sq. in. The 1" φ rods in the transverse tie assembly shall be tightened to a snug fit and the threads set. Pockets on exterior faces of bridge shall be filled with grout after transverse tie assembly is in place. Reinforcement bars shall conform to ASTM A 706, Grade 60. (See Special Provisions). Two 1/2" fabric adjusting shims of the dimensions of the exterior bearing pad shall be provided for each bearing pad location. A minimum 2 1/2" φ lifting pin shall be used to engage the lifting loops during handling. Corrosion Inhibitor, per Article 1020.05(b)(12) and 1021.06 of the Standard Specifications, shall be used in the concrete for precast prestressed concrete deck beams. Compressive strength of prestressed concrete, f'c, shall be 6000 psi. Compressive strength of prestressed concrete at release, f'cl, shall be 5000 psi.

BILL OF MATERIAL

Precast Prestressed Conc. Deck Bms. (17" depth)	Sq. Ft.	927
---	---------	-----

17"x48" BEAM DETAILS  
SPANS 1 AND 3  
SN 022-0054

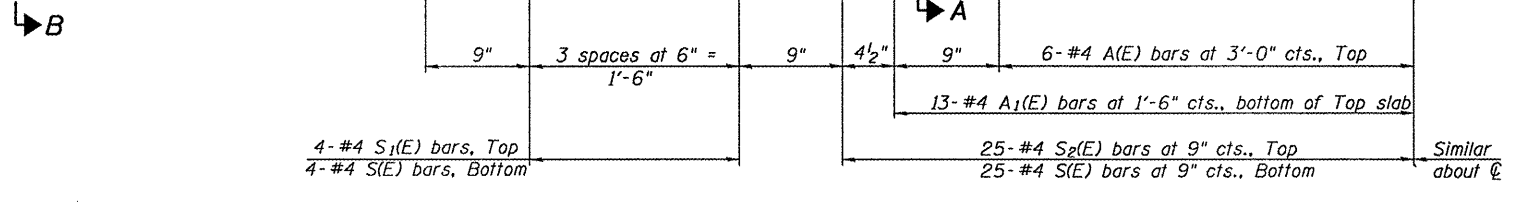
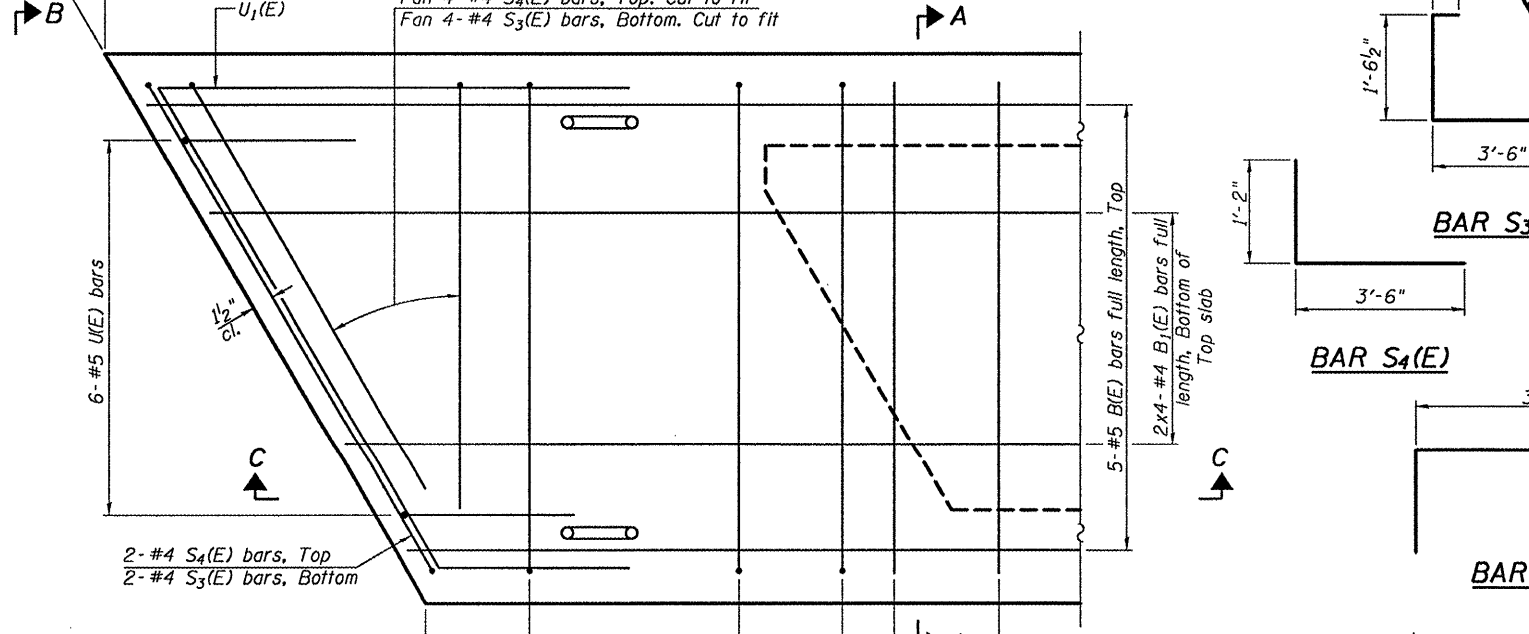
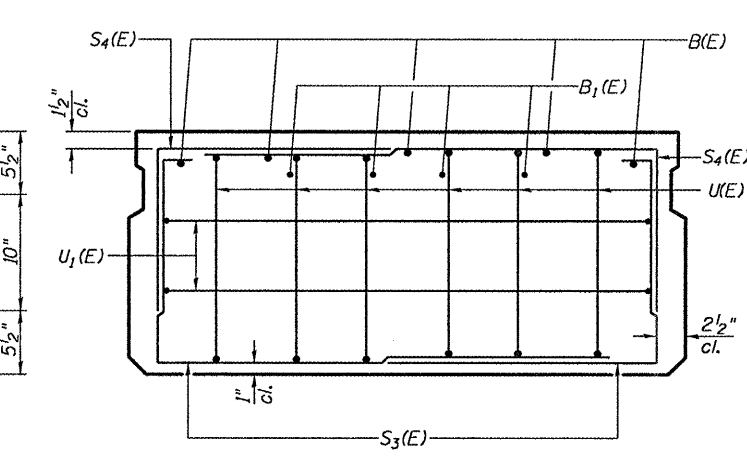
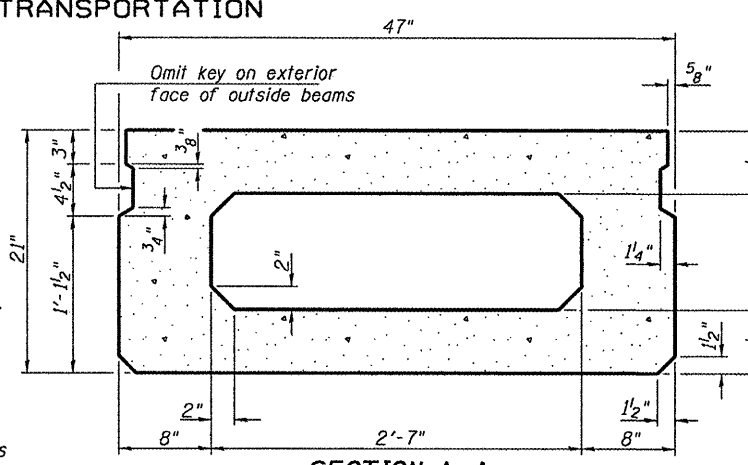
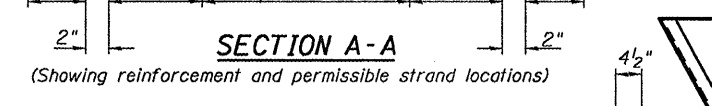
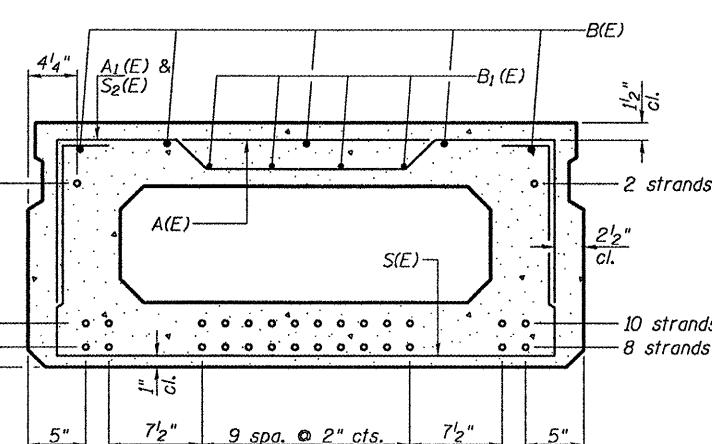
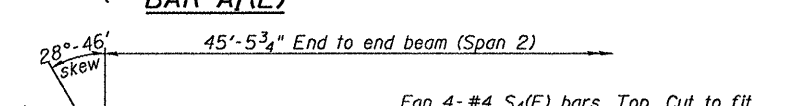
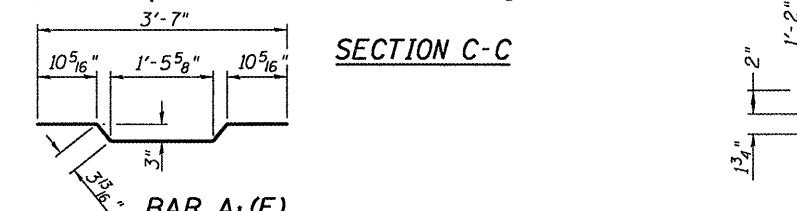
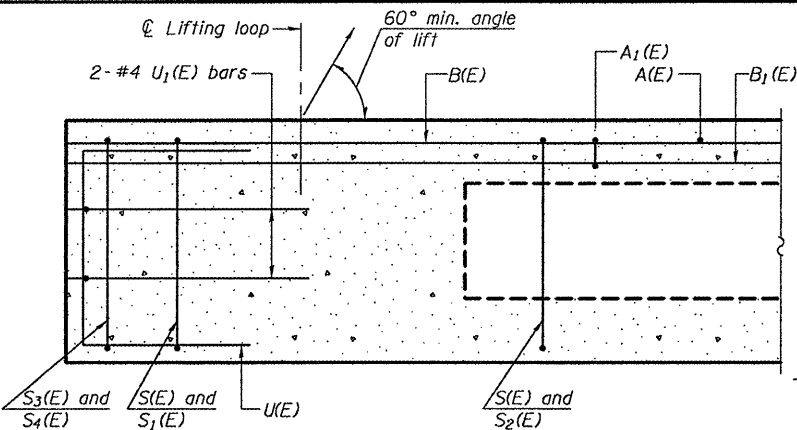
SHEET NO. 3 5 SHEETS	F.A.P. RTE. 0365	SECTION 2004-037 I	COUNTY DuPage	TOTAL SHEETS 20	SHEET NO. 10
	FED. ROAD DIST. NO. ILLINOIS		CONTRACT NO. 60G58		

DESIGNED	A.T.H.
CHECKED	V.H.V.
DRAWN	Drew Christopher
CHECKED	A.T.H. V.H.V.

EXAMINED	April 28, 2009
PASSED	Ralph E. Anderson ENGINEER OF BRIDGES AND STRUCTURES

STATE OF ILLINOIS  
DEPARTMENT OF TRANSPORTATION

Note: Place the number of strands specified in each row symmetrically about the centerline of beam in the permissible strand locations shown.



Note: Spacing of S(E) and S2(E) bars may be adjusted up to 4" in the immediate area of the transverse tie diaphragms to miss the block outs for the transverse ties.

PLAN VIEW

DESIGNED	A.T.H.
CHECKED	V.H.V.
DRAWN	Drew Christopher
CHECKED	A.T.H. V.H.V.

EXAMINED	April 28, 2009
PASSED	Carl P... ENGINEER OF STRUCTURAL SERVICES
	Ralph E. Anderson ENGINEER OF BRIDGES AND STRUCTURES

NOTES

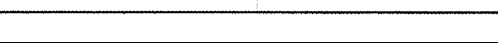
Prestressing steel shall be uncoated high strength, low relaxation 7-wire strand, Grade 270. The nominal diameter shall be 1/2" and the nominal cross-sectional area shall be 0.153 sq. in. The 1" φ rods in the transverse tie assembly shall be tightened to a snug fit and the threads set. Pockets on exterior faces of bridge shall be filled with grout after transverse tie assembly is in place. Reinforcement bars shall conform to ASTM A 706, Grade 60. (See Special Provisions). Two 1/8" fabric adjusting shims of the dimensions of the exterior bearing pad shall be provided for each bearing pad location. A minimum 2 1/2" φ lifting pin shall be used to engage the lifting loops during handling. Corrosion Inhibitor, per Article 1020.05(b)(12) and 1021.06 of the Standard Specifications, shall be used in the concrete for precast prestressed concrete deck beams. Compressive strength of prestressed concrete, f'c, shall be 6000 psi. Compressive strength of prestressed concrete at release, f'ci, shall be 5000 psi.

BAR LIST

ONE BEAM ONLY  
(For information only)

Bar	No.	Size	Length	Shape
A(E)	12	#4	3'-7"	—
A1(E)	26	#4	3'-10"	—
B(E)	5	#5	45'-2"	—
B1(E)	8	#4	23'-6"	—
S(E)	58	#4	7'-5"	—
S1(E)	8	#4	5'-11"	—
S2(E)	50	#4	6'-2"	—
S3(E)	8	#4	5'-5"	—
S4(E)	8	#4	4'-8"	—
U(E)	12	#5	4'-0"	—
U1(E)	4	#4	8'-5"	—

BAR S1(E)



BAR S2(E)



BAR S3(E)



BAR S4(E)



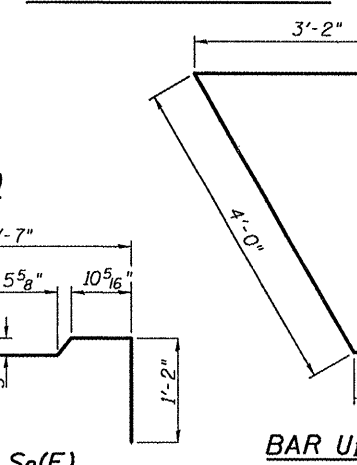
BAR U(E)



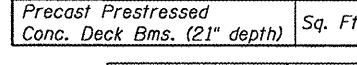
BAR U1(E)



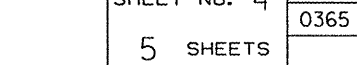
DIMENSION PLAN VIEW



BAR S2(E)



BAR U1(E)



BILL OF MATERIAL

Precast Prestressed Conc. Deck Bms. (21" depth)	Sq. Ft.	356
---	---------	-----

21"x48" BEAM DETAILS

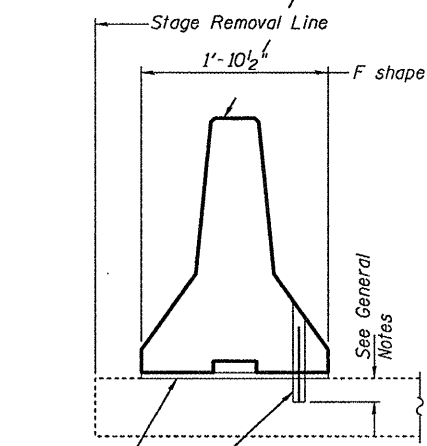
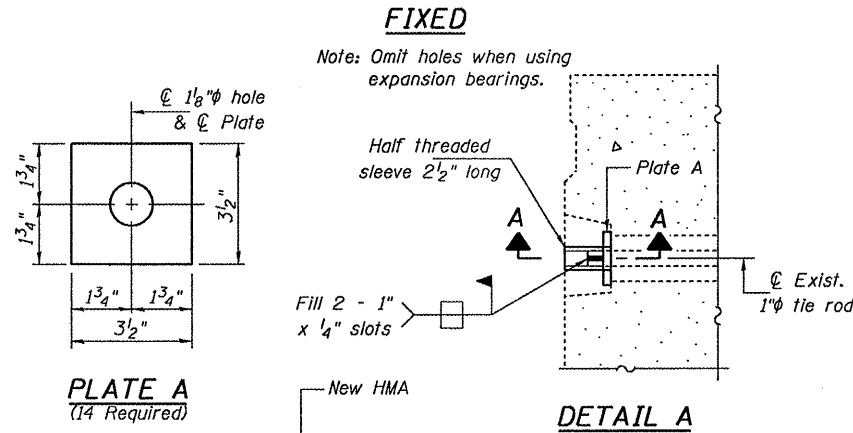
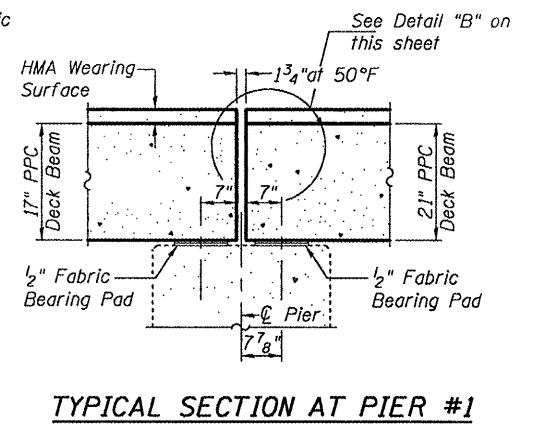
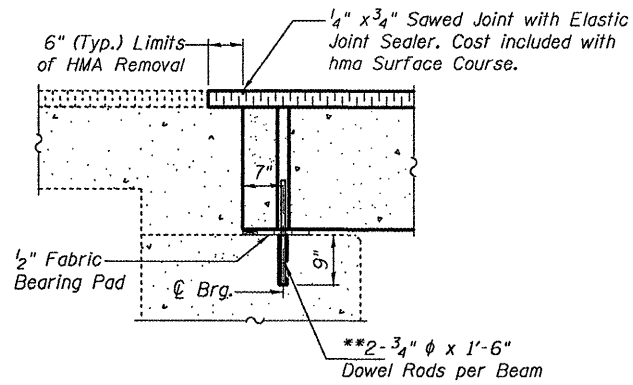
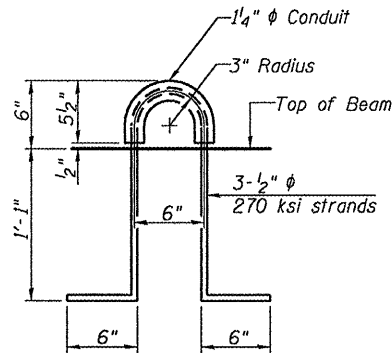
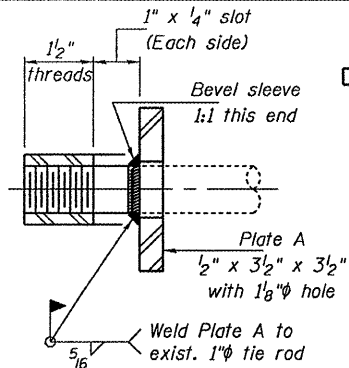
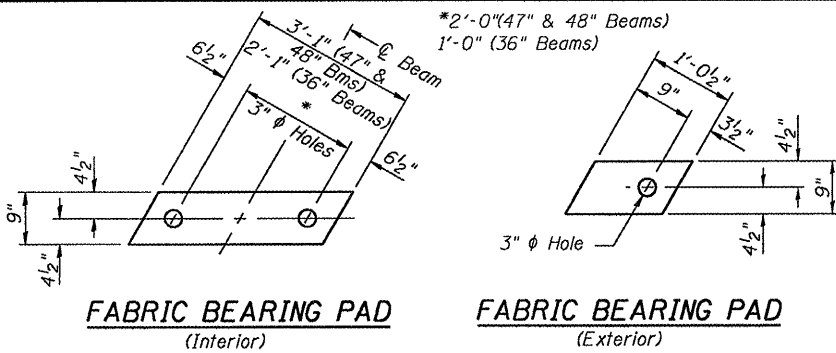
SPAN 2

SN 022-0054

SHEET NO. 4	F.A.P. RTE. 0365	SECTION 2004-037 I	COUNTY DuPage	TOTAL SHEETS 20	SHEET NO. 11
5 SHEETS	FED. ROAD DIST. NO. ILLINOIS		FED. AID PROJECT		

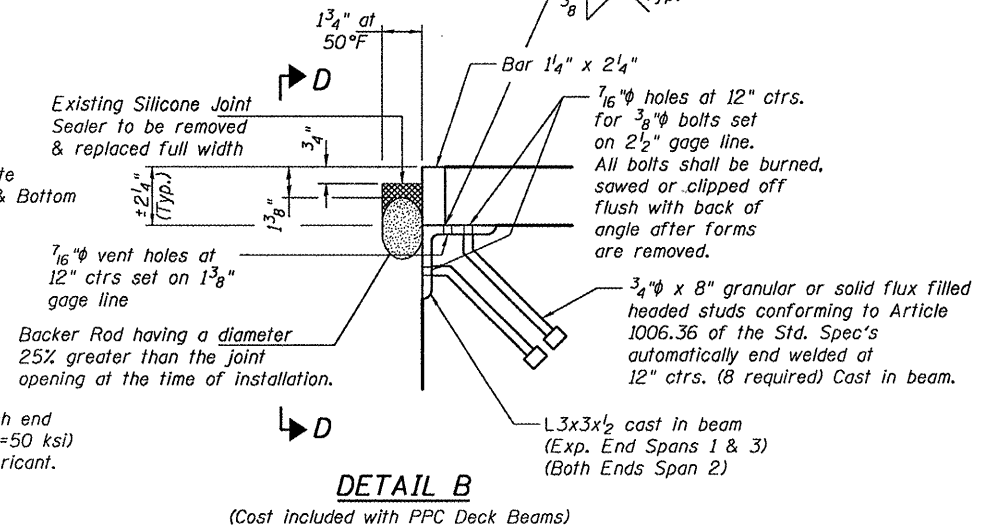
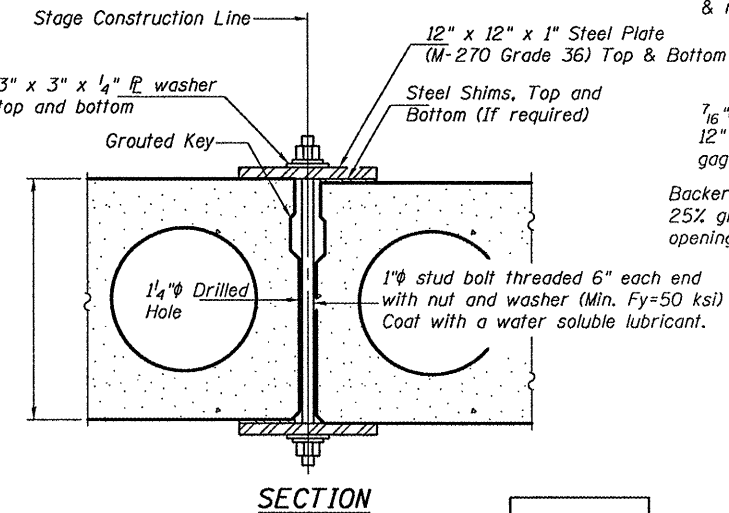
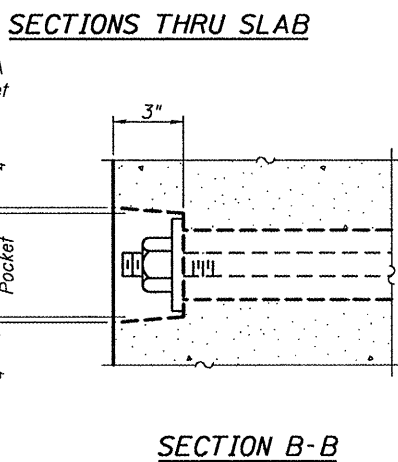
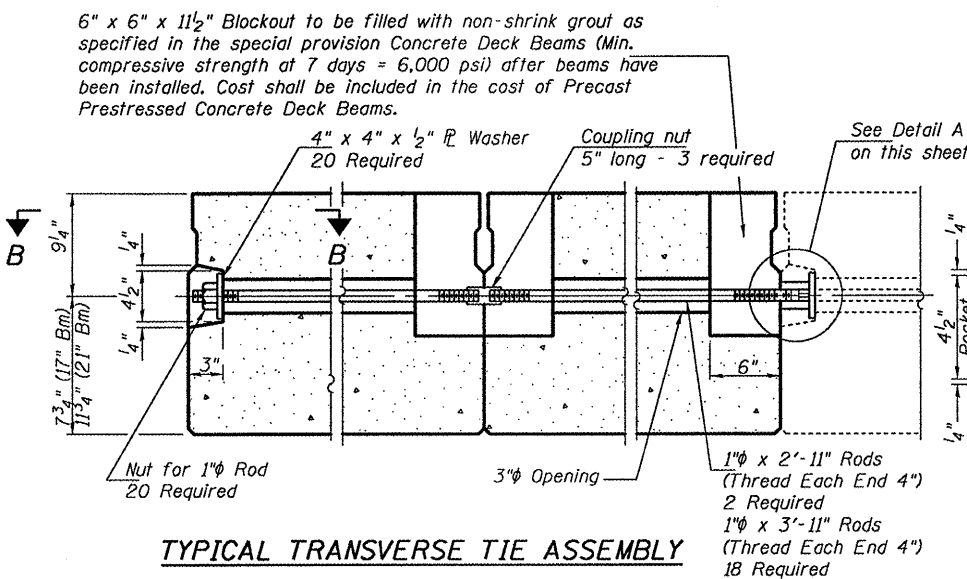
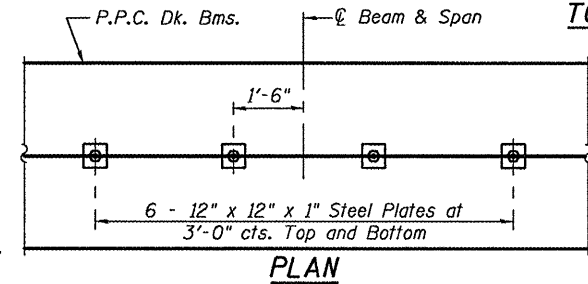
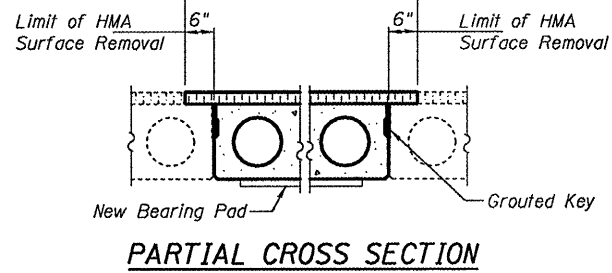
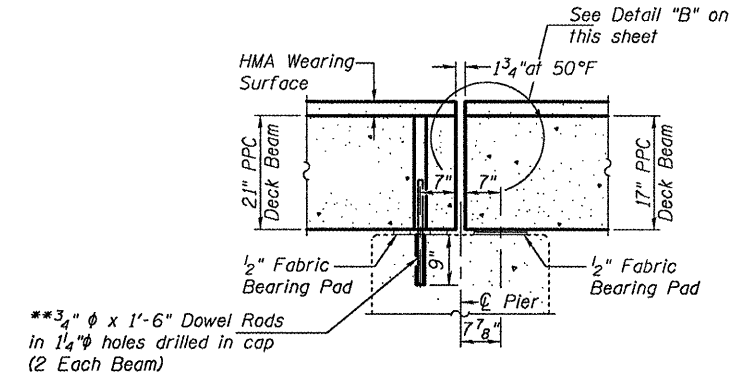
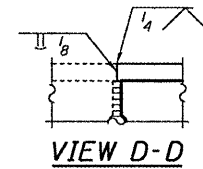
CONTRACT NO.	60G58
--------------	-------

STATE OF ILLINOIS  
DEPARTMENT OF TRANSPORTATION



**LIFTING LOOP DETAIL**

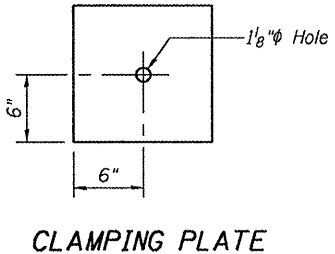
\*\* Dowel Rods to be grouted after beams are in place and allowed to cure (Min. 24 hrs.) prior to grouting the shear keys.



DESIGNED	A.T.H.
CHECKED	V.H.V.
DRAWN	Drew Christopher
CHECKED	A.T.H. V.H.V.

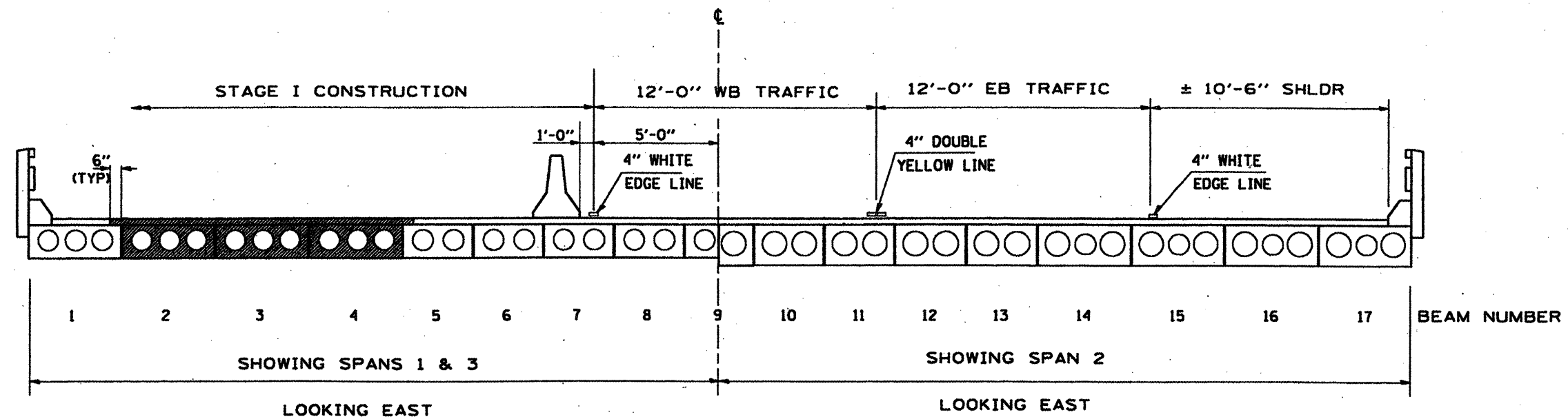
April 28, 2009  
 EXAMINED *Carl P. ...*  
 PASSED *Ralph E. Anderson*  
 ENGINEER OF BRIDGES AND STRUCTURES

Notes:  
 See Special Provisions for Stage Construction Precast Prestressed Concrete Deck Beams.  
 See Stage Construction Detail for traffic lane.  
 Cost is included with Precast Prestressed Concrete Deck Beams.

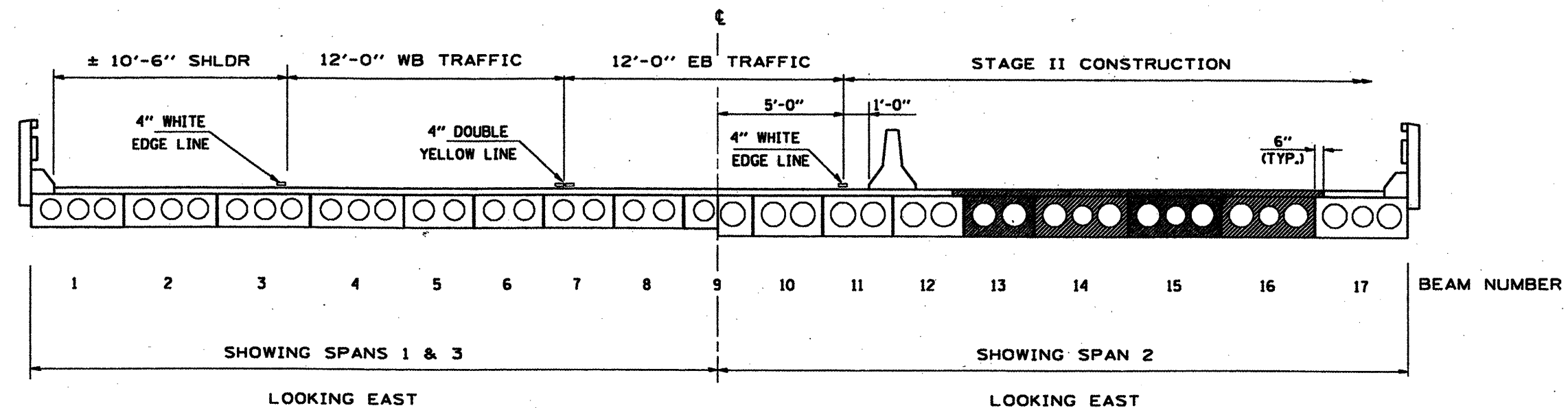


**DETAILS  
SN 022-0054**

SHEET NO. 5 5 SHEETS	F.A.P. RTE. 0365	SECTION 2004-037 I	COUNTY DuPage	TOTAL SHEETS 20	SHEET NO. 12
	FED. ROAD DIST. NO. ILLINOIS FED. AID PROJECT			CONTRACT NO. 60G58	

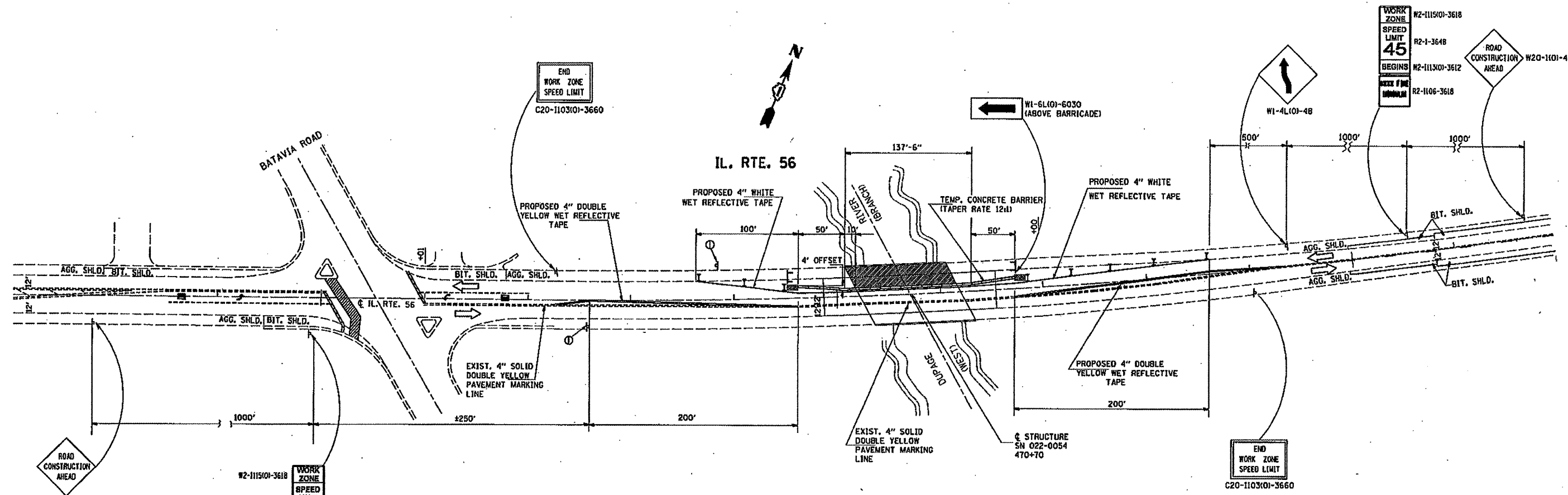


**STAGE I REMOVAL & CONSTRUCTION**




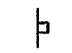
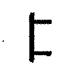

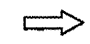
**STAGE II REMOVAL & CONSTRUCTION**

FILE NAME =	USER NAME = gorengautab	DESIGNED -	REVISED -	<b>STATE OF ILLINOIS DEPARTMENT OF TRANSPORTATION</b>	<b>TRAFFIC STAGING PLANS/TYPICAL CROSS SECTIONS</b>			F.A.P. RTE.	SECTION	COUNTY	TOTAL SHEETS	SHEET NO.
c:\pwork\PIWIDOT\GORENGAUTAB\08133798	0150989-ahh-staging.dgn	DRAWN -	REVISED -		<b>IL RTE. 56 OVER WEST BRANCH DUPAGE RIVER - SN 022-0054</b>			365	2009-0451	DUPAGE	20	13
	PLOT SCALE = 1/8" = 1'-0"	CHECKED -	REVISED -		SCALE: NONE	SHEET NO.	OF SHEETS	STA.	TO STA.	<b>CONTRACT NO. 60658</b>		
	PLOT DATE = 4/8/2009	DATE -	REVISED -		<small>ILLINOIS FED. AID PROJECT</small>							



TRAFFIC CONTROL PLAN FOR STAGE I CONSTRUCTION

SYMBOLS

-  TYPE II BARRICADE, DRUM OR VERTICAL BARRICADE WITH MONODIRECTIONAL STEADY BURNING LIGHT
-  SIGN
-  TYPE III BARRICADE
-  IMPACT ATTENUATOR
-  DIRECTION OF TRAFFIC

NOTES:

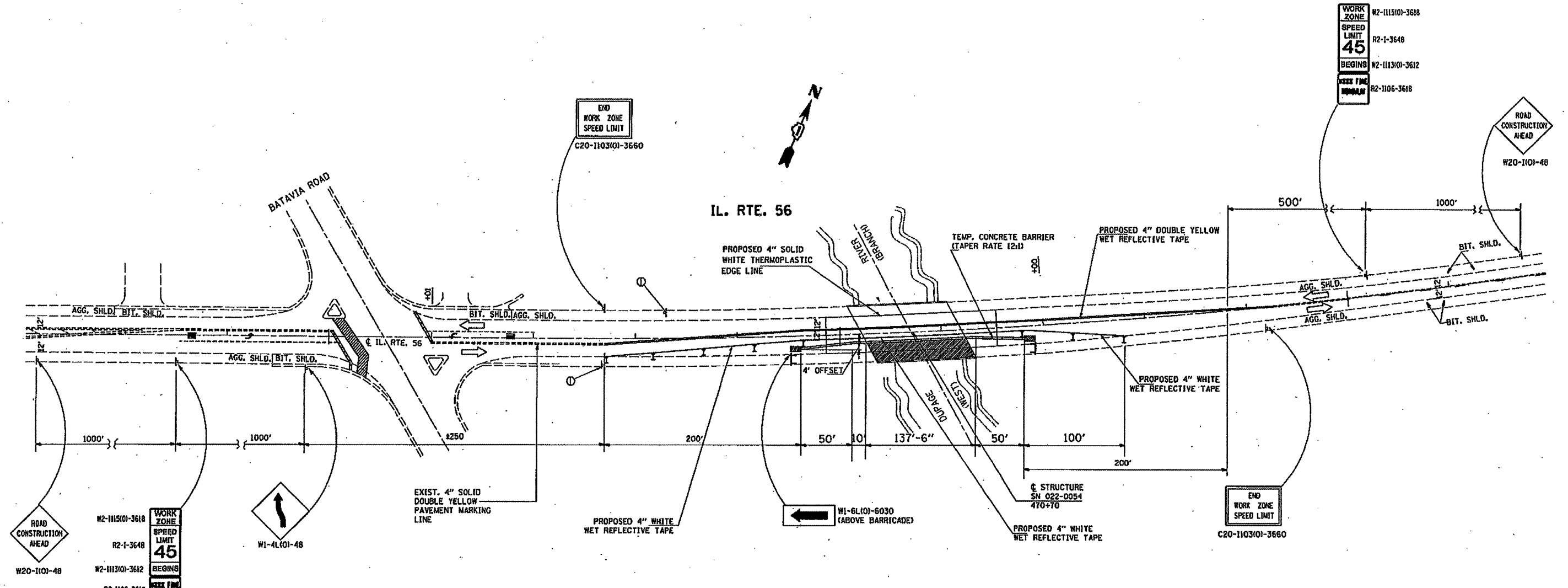
- BARRICADE, BARREL AND PANEL SPACING SHALL BE 25' CENTERS IN TAPER SECTIONS AND 50' CENTERS IN TANGENT SECTIONS.
- ⓪ COVER EXISTING 50 MPH SPEED LIMIT SIGNS DURING STAGING.
- TRAFFIC CONTROL DETAILS SHOWN ON THIS SHEET SHALL BE INCLUDED IN THE CONTRACT LUMP SUM PRICE FOR "TRAFFIC CONTROL AND PROTECTION (SPECIAL)".

FILE NAME =	USER NAME = gorengautab	DESIGNED -	REVISED -
si:\pwr\work\PHID01\GORENGAUTAB\0133790	0188989-ah-t-staging.dgn	DRAWN -	REVISED -
	PLOT SCALE = 1/8" = 1' / IN.	CHECKED -	REVISED -
	PLOT DATE = 4/29/2009	DATE -	REVISED -

STATE OF ILLINOIS  
DEPARTMENT OF TRANSPORTATION


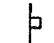


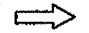
TRAFFIC STAGING PLANS  
IL. RTE. 56 OVER WEST BRANCH DUPAGE RIVER - SN 022-0054

F.A.P. RTE.	SECTION	COUNTY	TOTAL SHEETS	SHEET NO.
365	2009-0451	DUPAGE	20	14
CONTRACT NO. 60656			ILLINOIS FED. AID PROJECT	



TRAFFIC CONTROL PLAN FOR STAGE II CONSTRUCTION

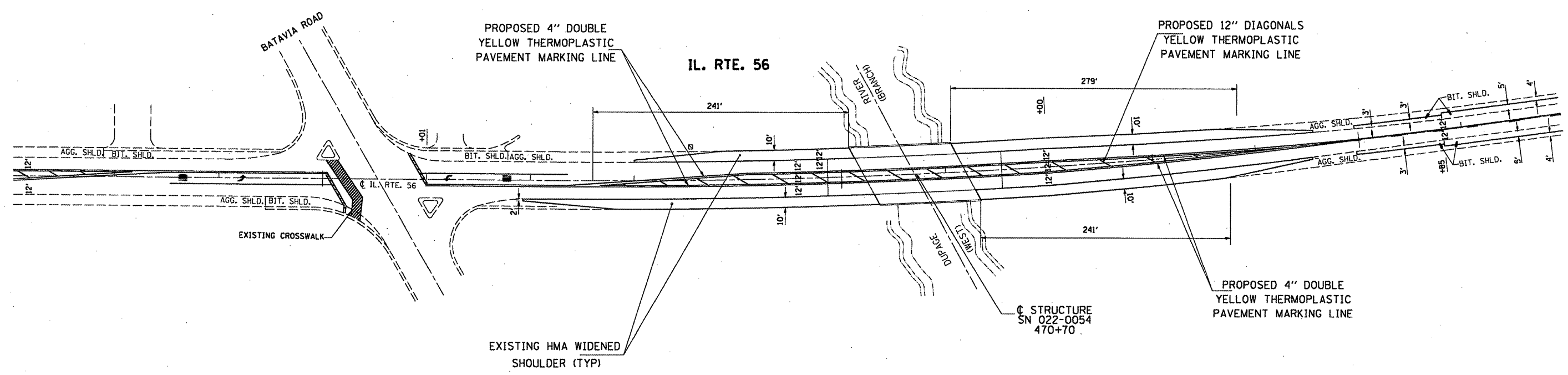
**SYMBOLS**

-  TYPE II BARRICADE, DRUM OR VERTICAL BARRICADE WITH MONODIRECTIONAL STEADY BURNING LIGHT
-  SIGN
-  TYPE III BARRICADE
-  IMPACT ATTENUATOR
-  DIRECTION OF TRAFFIC

**NOTES:**

- BARRICADE, BARREL AND PANEL SPACING SHALL BE 25' CENTERS IN TAPER SECTIONS AND 50' CENTERS IN TANGENT SECTIONS.
- ⓪ COVER EXISTING 50 MPH SPEED LIMIT SIGNS DURING STAGING.
- TRAFFIC CONTROL DETAILS SHOWN ON THIS SHEET SHALL BE INCLUDED IN THE CONTRACT LUMP SUM PRICE FOR "TRAFFIC CONTROL AND PROTECTION (SPECIAL)".

FILE NAME = o:\px\work\PM1001\GORENG\TAB\01133798	USER NAME = gorengoutob	DESIGNED -	REVISED -	<b>STATE OF ILLINOIS DEPARTMENT OF TRANSPORTATION</b>	<b>FINAL PAVEMENT MARKING PLAN IL RTE. 56 OVER WEST BRANCH DUPAGE RIVER - SN 022-0054</b>		F.A.P. RTE. 365	SECTION 2009-0451	COUNTY DUPAGE	TOTAL SHEETS 20	SHEET NO. 15	
	0156989-sh1-staging.dgn	DRAWN -	REVISED -		SCALE:	SHEET NO. OF SHEETS	STA. TO STA.	CONTRACT NO. 60658				
	PLOT SCALE = 1/8" = 1' IN.	CHECKED -	REVISED -		ILLINOIS FED. AID PROJECT							
	PLOT DATE = 4/29/2009	DATE -	REVISED -									



FILE NAME =	USER NAME = gorengautab	DESIGNED -	REVISED -
ca\pwwork\pwwid\GORENGAUTAB\d0133790	D150909-shit-staging.dgn	DRAWN -	REVISED -
	PLOT SCALE = 1/32" = 1' / IN.	CHECKED -	REVISED -
	PLOT DATE = 4/8/2009	DATE -	REVISED -

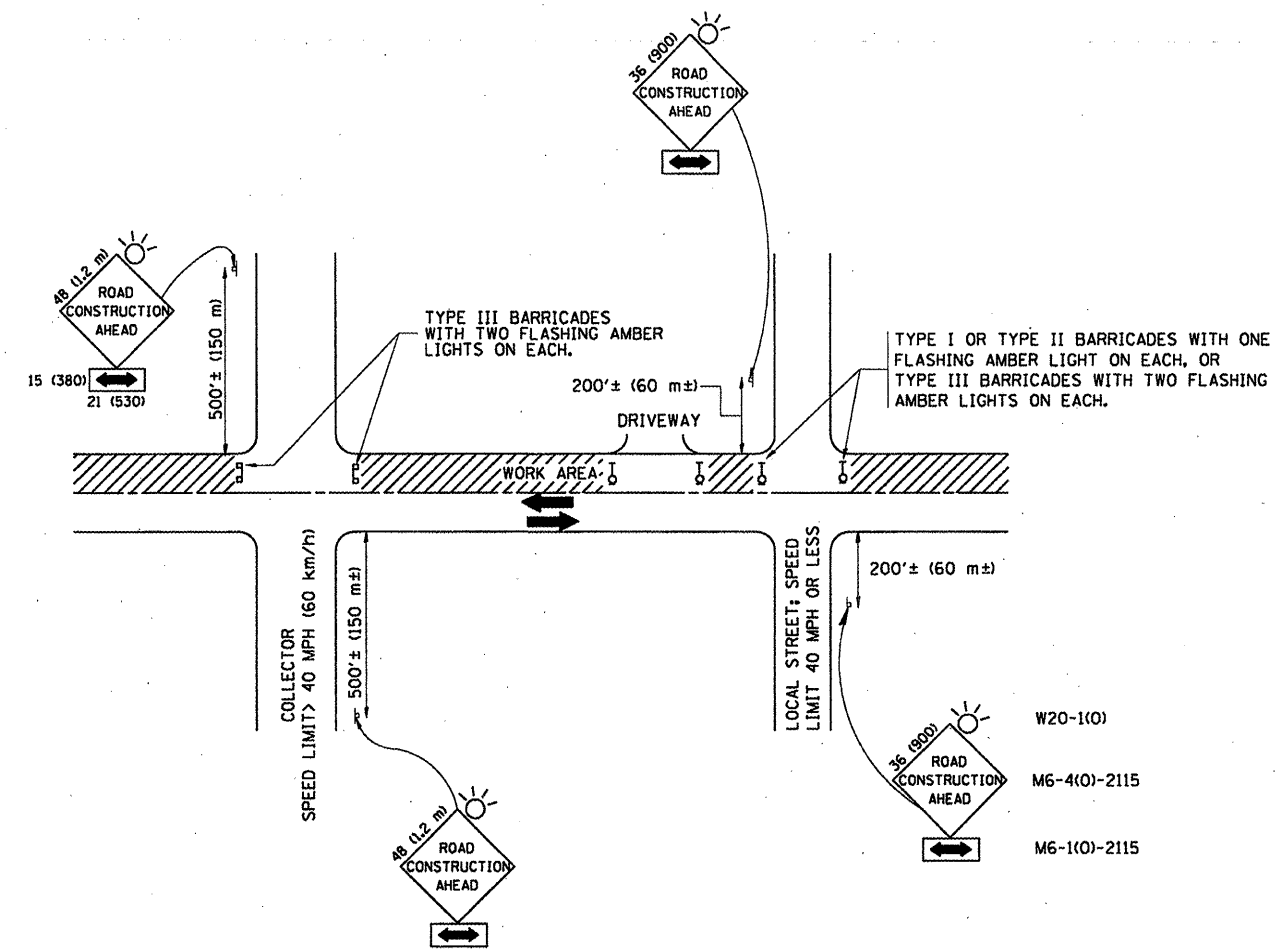
**STATE OF ILLINOIS**  
**DEPARTMENT OF TRANSPORTATION**

**TRAFFIC STAGING PLANS**  
**IL. RTE. 56 OVER WEST BRANCH DUPAGE RIVER - SN 022-0054**

SCALE: SHEET NO. OF SHEETS STA. TO STA.

F.A.P. RTE.	SECTION	COUNTY	TOTAL SHEETS	SHEET NO.
365	2009-0451	DUPAGE	20	16
<b>CONTRACT NO. 60658</b>				
<small>ILLINOIS FED. AID PROJECT</small>				





W20-1(0)  
M6-4(0)-2115  
M6-1(0)-2115

**TRAFFIC CONTROL AND PROTECTION FOR SIDE ROADS, INTERSECTIONS, AND DRIVEWAYS**

**NOTES:**

- A. FOR NO LANE RESTRICTION ON THE SIDE ROAD OR DRIVEWAYS**
- SIDE ROAD WITH A SPEED LIMIT OF 40 MPH (60 km/h) OR LESS AS SHOWN ON THE DRAWING AND AS DIRECTED BY THE ENGINEER:
    - ONE **ROAD CONSTRUCTION AHEAD** SIGN 36 x 36 (900x900) WITH A FLASHER AND FLAG MOUNTED ON IT APPROXIMATELY 200' (60 m) IN ADVANCE OF THE MAIN ROUTE.
    - THE CLOSED PORTION OF THE MAIN ROUTE SHALL BE PROTECTED BY BLOCKING WITH TYPE I, TYPE II OR TYPE III BARRICADES, 1/3 OF THE CROSS SECTION OF THE CLOSED PORTION.
  - SIDE ROAD WITH A SPEED LIMIT GREATER THAN 40 MPH (60 km/h) AS SHOWN ON THE DRAWING AND AS DIRECTED BY THE ENGINEER:
    - ONE **ROAD CONSTRUCTION AHEAD** SIGN 48 x 48 (1.2 m x 1.2 m) WITH A FLASHER MOUNTED ON IT APPROXIMATELY 500' (150 m) IN ADVANCE OF THE MAIN ROUTE.
    - THE CLOSED PORTION OF THE MAIN ROUTE SHALL BE PROTECTED BY BLOCKING WITH TYPE III BARRICADES, 1/2 OF THE CROSS SECTION OF THE CLOSED PORTION.
- B. FOR A LANE CLOSURE ON A SIDE ROAD OR DRIVEWAY:**
- USE APPLICABLE PORTIONS OF THE TYPICAL APPLICATION OF TRAFFIC CONTROL DEVICES (STD. 701501, STD. 701606 OR THE APPROPRIATE STANDARD). THE SPACING OF SIGNS AND BARRICADES SHALL BE ADJUSTED FOR FIELD CONDITIONS AS DIRECTED BY THE ENGINEER. THE DIRECTIONAL ARROW SHALL BE COVERED OR REMOVED WHEN NO LONGER CONSISTENT WITH THE SIDE ROAD LANE CLOSURE.
- C. ADVANCE WARNING SIGNS ARE TO BE OMITTED ON DRIVEWAY UNLESS OTHERWISE NOTED.**
- D. THE TRAFFIC CONTROL AND PROTECTION FOR SIDE ROADS, INTERSECTIONS, AND DRIVEWAYS SHALL BE INCIDENTAL TO THE COST OF SPECIFIED TRAFFIC CONTROL STANDARDS OR ITEMS.**

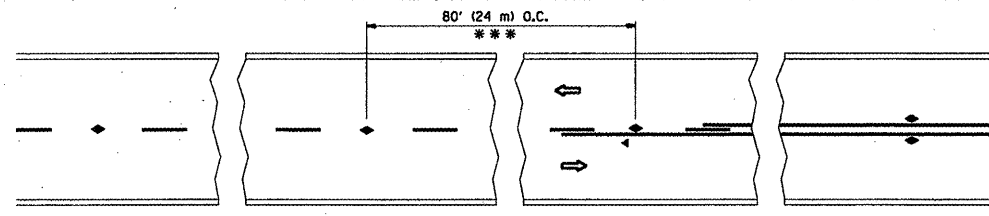
All dimensions are in millimeters (inches) unless otherwise shown.

FILE NAME =	USER NAME = gorengouteb	DESIGNED - LHA	REVISED - J. OBERLE 10-18-95
et:\pwwork\pwwid\DOT\GORENGAUTAB\ad0133798	DnsStd.dgn	DRAWN -	REVISED - A. HOUSEH 03-06-96
PLOT SCALE = 1/8" = 1' IN.	CHECKED -	DATE - 06-89	REVISED - A. HOUSEH 10-15-96
PLOT DATE = 4/3/2009	DATE -		REVISED - T. RAMMACHER 01-06-00

**STATE OF ILLINOIS  
DEPARTMENT OF TRANSPORTATION**

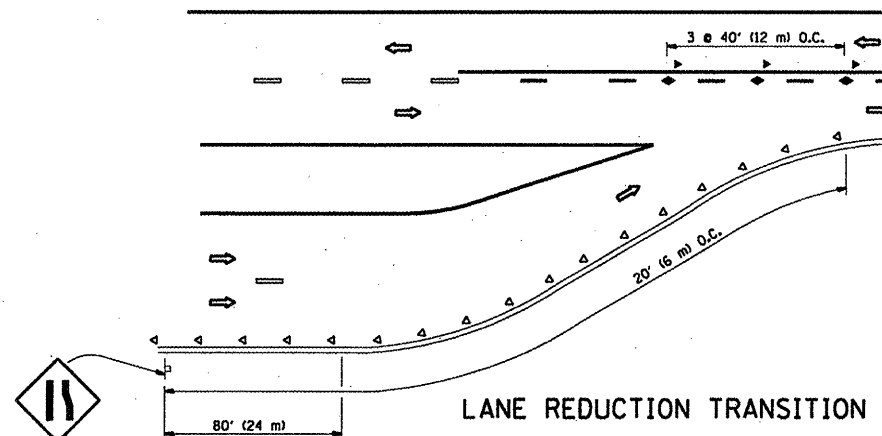
<b>TRAFFIC CONTROL AND PROTECTION FOR SIDE ROADS, INTERSECTIONS, AND DRIVEWAYS</b>			
SCALE: NONE	SHEET NO. 1 OF 1 SHEETS	STA.	TO STA.

F.A.R. RTE.	SECTION	COUNTY	TOTAL SHEETS	SHEET NO.
365	2009-045 1	DUPAGE	20	17
<b>TC-10</b>			<b>CONTRACT NO. 60G58</b>	
FED. ROAD DIST. NO. 1 ILLINOIS FED. AID PROJECT				

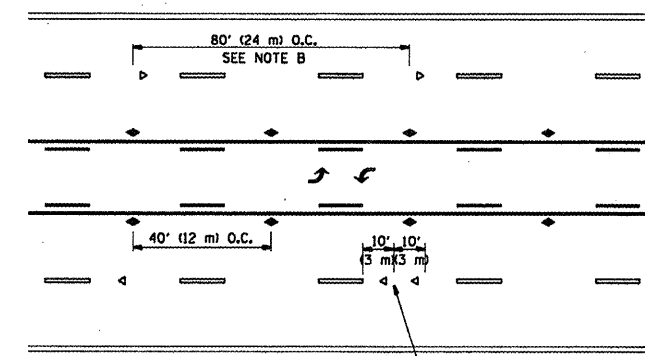


\*\*\* REDUCE TO 40' (12 m) O.C. ON CURVES WITH POSTED OR ADVISORY SPEED 45 M.P.H. (70 km/h) OR LESS.

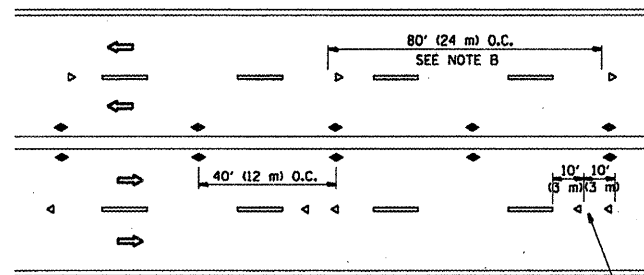
TWO-LANE/TWO-WAY



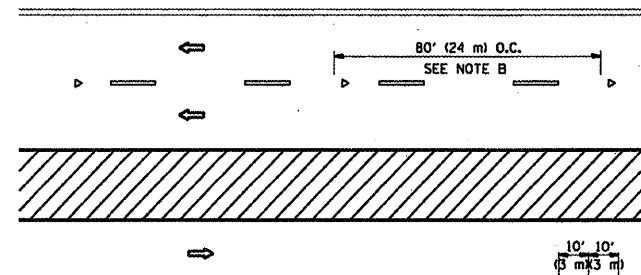
LANE REDUCTION TRANSITION



TWO-WAY LEFT TURN



MULTI-LANE/UNDIVIDED



MULTI-LANE/DIVIDED

GENERAL NOTES

1. MARKERS USED WITH DASHED LINES SHALL BE CENTERED IN THE GAP BETWEEN SEGMENTS.
2. MARKERS USED ADJACENT TO SOLID LINES SHALL BE OFFSET 2 TO 3 (50 TO 75) TOWARD TRAFFIC AS SHOWN.
3. MARKERS THROUGH TANGENTS LESS THAN 500' (150 m) IN LENGTH BETWEEN CURVES SHALL BE INSTALLED AT THE LESSER OF THE TWO CURVE SPACINGS.

SYMBOLS

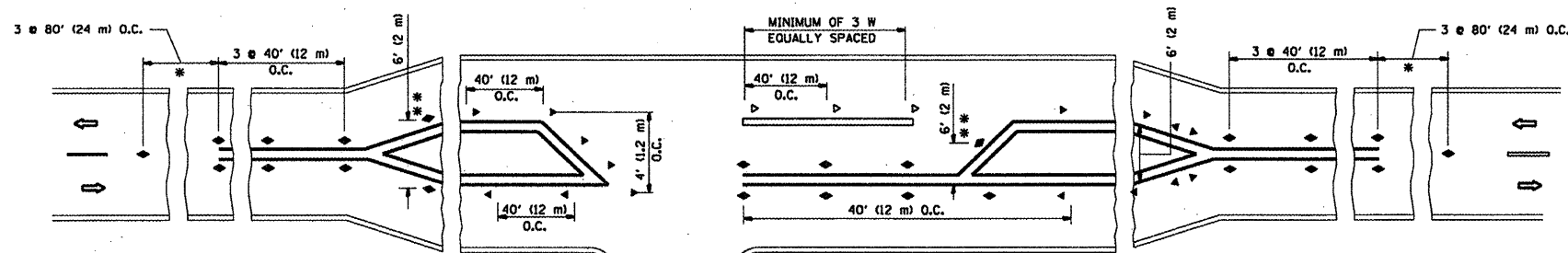
- YELLOW STRIPE
- WHITE STRIPE
- ◀ ONE-WAY AMBER MARKER
- ◀ ONE-WAY CRYSTAL MARKER (W/O)
- ◆ TWO-WAY AMBER MARKER

LANE MARKER NOTES

- B. REDUCE TO 40' (12 m) O.C. ON CURVES WHERE ADVISORY SPEEDS ARE 10 M.P.H. (20 km/h) LOWER THAN POSTED SPEEDS.
- A. USE DOUBLE LANE LINE MARKERS SPACED AS SHOWN.

DESIGN NOTES

1. DOUBLE LANE LINE MARKERS SHALL BE USED UNLESS SPECIFIED OTHERWISE.
2. EXCEPT AS SHOWN ON THE LANE REDUCTION TRANSITION AND FREEWAY EXIT RAMP DETAIL, MARKERS ARE NOT TO BE SPECIFIED ON RIGHT EDGE LINES.
3. THE EXACT MARKER LIMITS, SPACING, AND COLOR SHOULD BE INCLUDED IN THE PLANS.
4. MARKERS SHOULD NOT BE USED ALONGSIDE CURBS EXCEPT FOR EXTREMELY SHORT SECTIONS OF CURBS WHERE NOT MORE THAN TWO MARKERS WOULD BE INVOLVED.



\* SEE TWO-LANE/TWO-WAY WHERE MARKERS CONTINUE  
 \*\* WHERE THE MEDIAN WIDTH IS 6' (2 m) OR LESS USE TWO-WAY MARKERS.

LEFT TURN

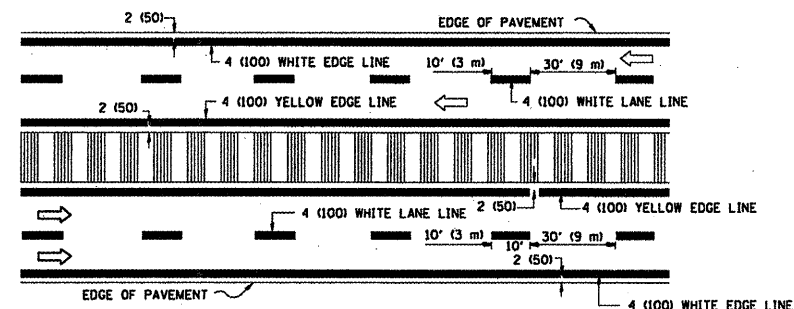
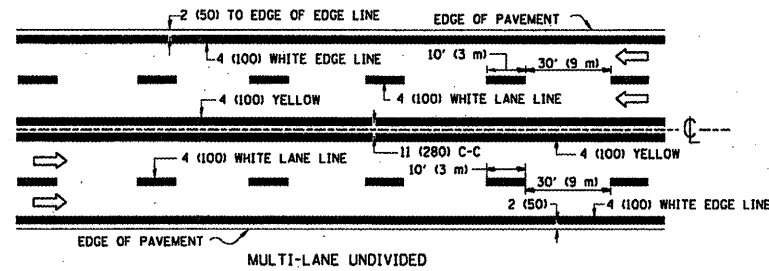
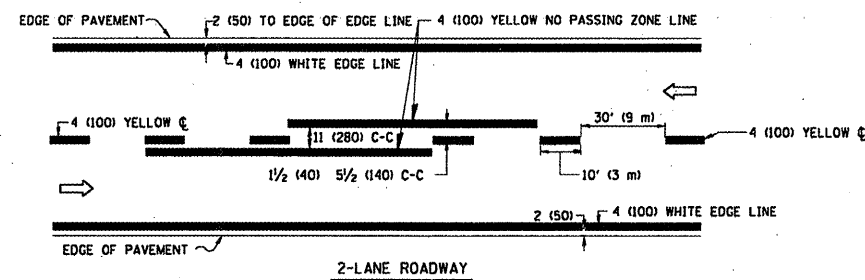
All dimensions are in Inches (millimeters) unless otherwise shown.

FILE NAME =	USER NAME = gorengautab	DESIGNED -	REVISED - T. RAMMACHER 09-19-94
ct:\pwwork\pwwid\GORENGAUTAB\d0133798	DistStd.dgn	DRAWN -	REVISED - T. RAMMACHER 03-12-99
	PLOT SCALE = 1/8" = 1' / IN.	CHECKED -	REVISED - T. RAMMACHER 01-06-00
	PLOT DATE = 4/3/2009	DATE -	REVISED -

STATE OF ILLINOIS  
 DEPARTMENT OF TRANSPORTATION

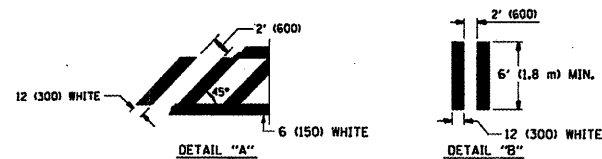
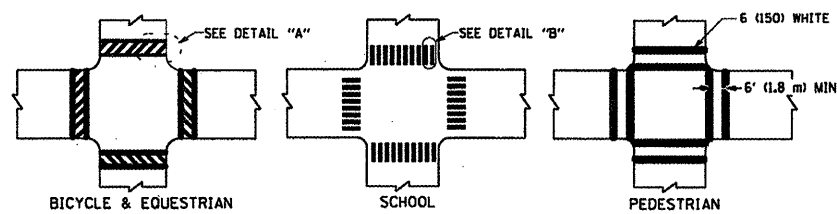
TYPICAL APPLICATIONS			
RAISED REFLECTIVE PAVEMENT MARKERS (SNOW-FLW RESISTANT)			
SCALE: NONE	SHEET NO. 1 OF 1 SHEETS	STA.	TO STA.

F.A.P. RTE.	SECTION	COUNTY	TOTAL SHEETS	SHEET NO.
365	2009-045 I	DUPAGE	20	18
TC-11			CONTRACT NO. 60658	
FED. ROAD DIST. NO. 1 ILLINOIS FED. AID PROJECT				

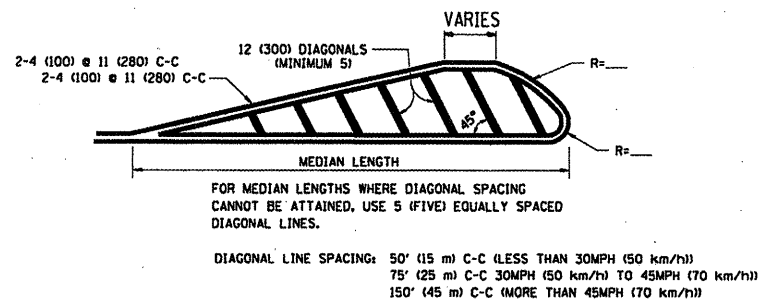
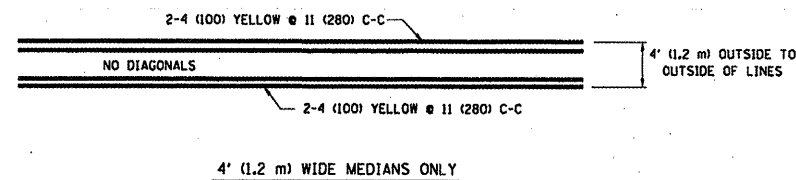


NOTE: MEDIANS WITH BARRIER CURB DO NOT REQUIRE AN EDGE LINE

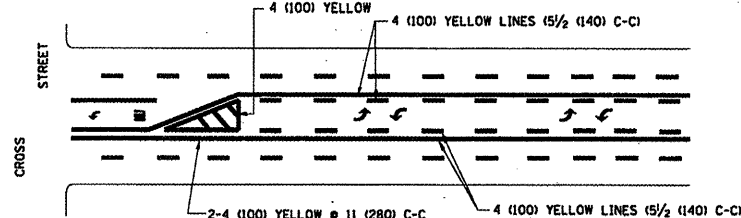
**TYPICAL LANE AND EDGE LINE MARKING**



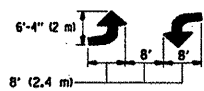
**TYPICAL CROSSWALK MARKING**



**MEDIANS OVER 4' (1.2 m) WIDE**

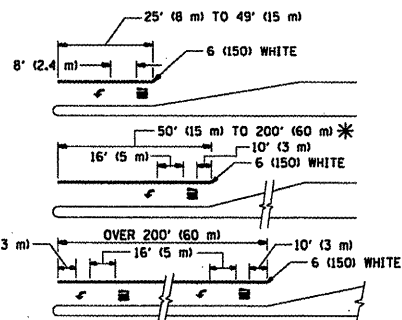


A MINIMUM OF TWO PAIRS OF TURN ARROWS SHALL BE USED, WHITE IN COLOR. ADDITIONAL PAIRS SHALL BE PLACED AT 200' (60 m) TO 300' (90 m) INTERVALS.



**MEDIAN WITH TWO-WAY LEFT TURN LANE**

**TYPICAL PAINTED MEDIAN MARKING**

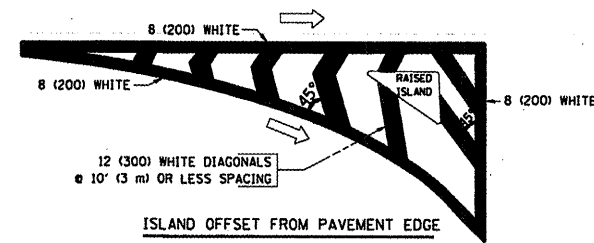


FULL SIZE LETTERS 8' (2.4 m) AND ARROWS SHALL BE USED. AREA = 15.6 SQ. FT. (1.5 m<sup>2</sup>) ; AREA = 20.8 SQ. FT. (1.9 m<sup>2</sup>)

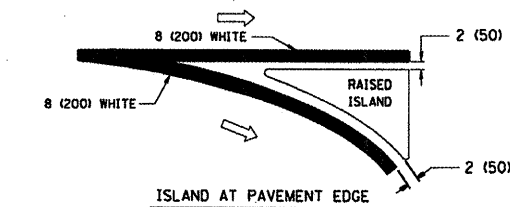
\* TURN LANES IN EXCESS OF 400' (120 m) IN LENGTH MAY HAVE AN ADDITIONAL SET OF ARROW - "ONLY" INSTALLED MIDWAY BETWEEN THE OTHER TWO SETS OF ARROW - "ONLY".

**TYPICAL LEFT (OR RIGHT) TURN LANE**

**TYPICAL TURN LANE MARKING**



**ISLAND OFFSET FROM PAVEMENT EDGE**



**ISLAND AT PAVEMENT EDGE**

**TYPICAL ISLAND MARKING**

TYPE OF MARKING	WIDTH OF LINE	PATTERN	COLOR	SPACING / REMARKS
CENTERLINE ON 2 LANE PAVEMENT	4 (100)	SKIP-DASH	YELLOW	10' (3 m) LINE WITH 30' (9 m) SPACE
CENTERLINE ON MULTI-LANE UNDIVIDED PAVEMENT	2 @ 4 (100)	SOLID	YELLOW	11 (280) C-C
NO PASSING ZONE LINES: FOR ONE DIRECTION	4 (100)	SOLID	YELLOW	5/2 (140) C-C FROM SKIP-DASH CENTERLINE
FOR BOTH DIRECTIONS	2 @ 4 (100)	SOLID	YELLOW	11 (280) C-C OMIT SKIP-DASH CENTERLINE BETWEEN
LANE LINES	4 (100) 5 (125) ON FREEWAYS	SKIP-DASH SKIP-DASH	WHITE WHITE	10' (3 m) LINE WITH 30' (9 m) SPACE
DOTTED LINES (EXTENSIONS OF CENTER, LANE OR TURN LANE MARKINGS)	SAME AS LINE BEING EXTENDED	SKIP-DASH	SAME AS LINE BEING EXTENDED	2' (600) LINE WITH 6' (1.8 m) SPACE
EDGE LINES	4 (100)	SOLID	YELLOW-LEFT WHITE-RIGHT	OUTLINE MOUNTABLE MEDIANS IN YELLOW; EDGE LINES ARE NOT USED NEXT TO BARRIER CURB
TURN LANE MARKINGS	6 (150) LINE; FULL SIZE LETTERS & SYMBOLS (8' (2.4m))	SOLID	WHITE	SEE TYPICAL TURN LANE MARKING DETAIL
TWO WAY LEFT TURN MARKING	2 @ 4 (100) EACH DIRECTION	SKIP-DASH AND SOLID	YELLOW	10' (3 m) LINE WITH 30' (9 m) SPACE FOR SKIP-DASH 5/2 (140) C-C BETWEEN SOLID LINE AND SKIP-DASH LINE
	8' (2.4m) LEFT ARROW	IN PAIRS	WHITE	SEE TYPICAL TWO-WAY LEFT TURN MARKING DETAIL
CROSSWALK LINES (PEDESTRIAN)	2 @ 6 (150)	SOLID	WHITE	NOT LESS THAN 6' (1.8 m) APART
A. DIAGONALS (BIKE & EQUESTRIAN)	12 (300) @ 45°	SOLID	WHITE	2' (600) APART
B. LONGITUDINAL BARS (SCHOOL)	12 (300) @ 90°	SOLID	WHITE	SEE TYPICAL CROSSWALK MARKING DETAILS.
STOP LINES	24 (600)	SOLID	WHITE	PLACE 4' (1.2 m) IN ADVANCE OF AND PARALLEL TO CROSSWALK, IF PRESENT. OTHERWISE, PLACE AT DESIRED STOPPING POINT, PARALLEL TO CROSSROAD CENTERLINE, WHERE POSSIBLE
PAINTED MEDIANS	2 @ 4 (100) WITH 12 (300) DIAGONALS @ 45°	SOLID	YELLOW; TWO WAY TRAFFIC WHITE; ONE WAY TRAFFIC	11 (280) C-C FOR THE DOUBLE LINE SEE TYPICAL PAINTED MEDIAN MARKING.
GORE MARKING AND CHANNELIZING LINES	8 (200) WITH 12 (300) DIAGONALS @ 45°	SOLID	WHITE	DIAGONALS: 15' (4.5 m) C-C (LESS THAN 30MPH (50 km/h)) 20' (6 m) C-C (30 MPH (50 km/h) TO 45MPH (70 km/h)) 30' (9 m) C-C (OVER 45MPH (70 km/h))
RAILROAD CROSSING	24 (600) TRANSVERSE LINES; "RR" 15 6' (1.8 m) LETTERS; 16 (400) LINE FOR "X"	SOLID	WHITE	SEE STATE STANDARD 780001 AREA OF: "R"=3.6 SQ. FT. (0.33 m <sup>2</sup> ) EACH "X"=54.0 SQ. FT. (5.0 m <sup>2</sup> )
SHOULDER DIAGONALS	12 (300) @ 45°	SOLID	WHITE - RIGHT YELLOW - LEFT	50' (15 m) C-C (LESS THAN 30MPH (50 km/h)) 75' (25 m) C-C (30 MPH (50 km/h) TO 45MPH (70 km/h)) 150' (45 m) C-C (OVER 45MPH (70 km/h))

FOR FURTHER DETAILS ON PAVEMENT MARKING REFER TO STANDARD SPECIFICATIONS FOR ROAD AND BRIDGE CONSTRUCTION AND STATE STANDARD 780001.

All dimensions are in inches (millimeters) unless otherwise shown.

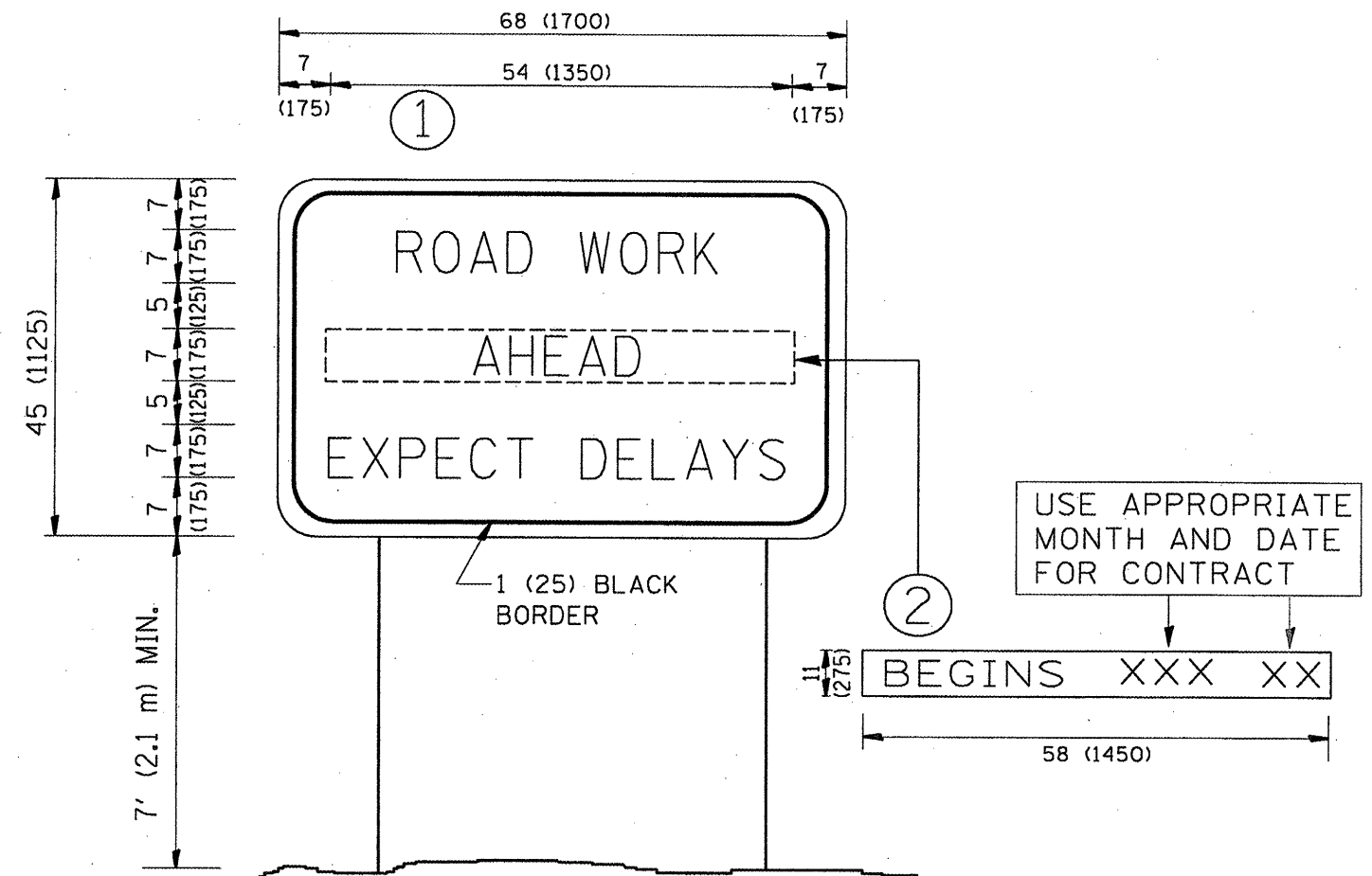
FILE NAME =	USER NAME = gorengoutab	DESIGNED - EVERS	REVISED - T. RAMMACHER 10-27-94
ca\p\work\PWIDOT\GORENGOUTAB\d0133790	DistStd.dgn	DRAWN -	REVISED - A. HOUSEH 10-09-96
	PLOT SCALE = 1/8" = 1' / IN.	CHECKED -	REVISED - A. HOUSEH 10-17-96
	PLOT DATE = 4/3/2009	DATE - 03-19-90	REVISED - T. RAMMACHER 01-06-00

**STATE OF ILLINOIS DEPARTMENT OF TRANSPORTATION**

**DISTRICT ONE TYPICAL PAVEMENT MARKINGS**

SCALE: NONE SHEET NO. 1 OF 1 SHEETS STA. TO STA.

F.A.P. RTE.	SECTION	COUNTY	TOTAL SHEETS	SHEET NO.
365	2009-045 1	DUPAGE	20	19
TC-13		CONTRACT NO. 60G58		
FED. ROAD DIST. NO. 1 [ILLINOIS] FED. AID PROJECT				



**NOTES:**

1. USE BLACK LETTERING ON ORANGE BACKGROUND.
2. ERECT SIGNS IN ADVANCE OF THE LOCATION FOR THE "ROAD CONSTRUCTION AHEAD" SIGN AT LOCATIONS AS DIRECTED BY THE ENGINEER.
3. ERECT SIGN ① WITH INSTALLED PANEL ② ONE WEEK PRIOR TO THE START OF CONSTRUCTION.
4. REMOVE PANEL ② SOON AFTER THE START OF CONSTRUCTION.
5. SEE SPECIAL PROVISION FOR "TEMPORARY INFORMATION SIGNING" FOR ADDITIONAL INFORMATION.
6. ONE SIGN ASSEMBLY EQUALS 25.70 SQ. FT. (2.3 SQ. M.)
7. SHALL BE PAID FOR AS TEMPORARY INFORMATION SIGNING.

ALL DIMENSIONS ARE IN INCHES (MILLIMETERS) UNLESS OTHERWISE SHOWN.

FILE NAME =	USER NAME = garengautab	DESIGNED -	REVISED - R. MIRS 09-15-97
cr\pw\work\PW\DOT\GORENGAUTAB\0133790	DwgStd.dgn	DRAWN -	REVISED - R. MIRS 12-11-97
PLOT SCALE = 1/32" = 1/8" IN.	CHECKED -	REVISED - T. RAMMACHER 02-02-99	
PLOT DATE = 4/3/2009	DATE -	REVISED - C. JUCIUS 01-31-07	

**STATE OF ILLINOIS  
DEPARTMENT OF TRANSPORTATION**

**ARTERIAL ROAD  
INFORMATION SIGN**

SCALE: NONE SHEET NO. 1 OF 1 SHEETS STA. TO STA.

F.A.P. RTE.	SECTION	COUNTY	TOTAL SHEETS	SHEET NO.
365	2009-045 I	DUPAGE	20	20
TC-22		CONTRACT NO. 60658		
FED. ROAD DIST. NO. 1 [ILLINOIS] FED. AID PROJECT				