

F.A.U. RTE.	SECTION	COUNTY	TOTAL SHEETS	SHEET NO.
3726	(112 & 112X) RS-7	LAKE/COOK	19	1
FED. ROAD DIST. NO. 1	ILLINOIS	CONTRACT NO.	60H03	

STATE OF ILLINOIS
DEPARTMENT OF TRANSPORTATION

DIVISION OF HIGHWAYS

**PROPOSED
HIGHWAY PLANS**

F.A.U. 3726 (LAKE-COOK ROAD /SHERIDAN ROAD)
SECTION (112 & 112X) RS-7
GREEN BAY ROAD TO SHERIDAN ROAD (EAST JUNCTION)
RESURFACING (3P)

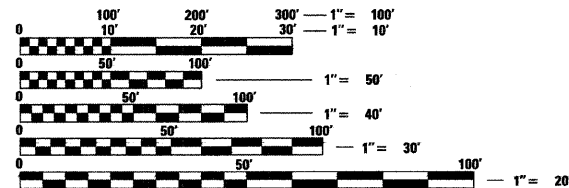
LAKE /COOK COUNTY
C-91-559-09

FOR INDEX OF SHEETS, SEE SHEET NO. 2

THESE IMPROVEMENTS ARE LOCATED WITHIN
THE VILLAGE OF GLENCOE AND CITY OF HIGHLAND PARK

TRAFFIC DATA

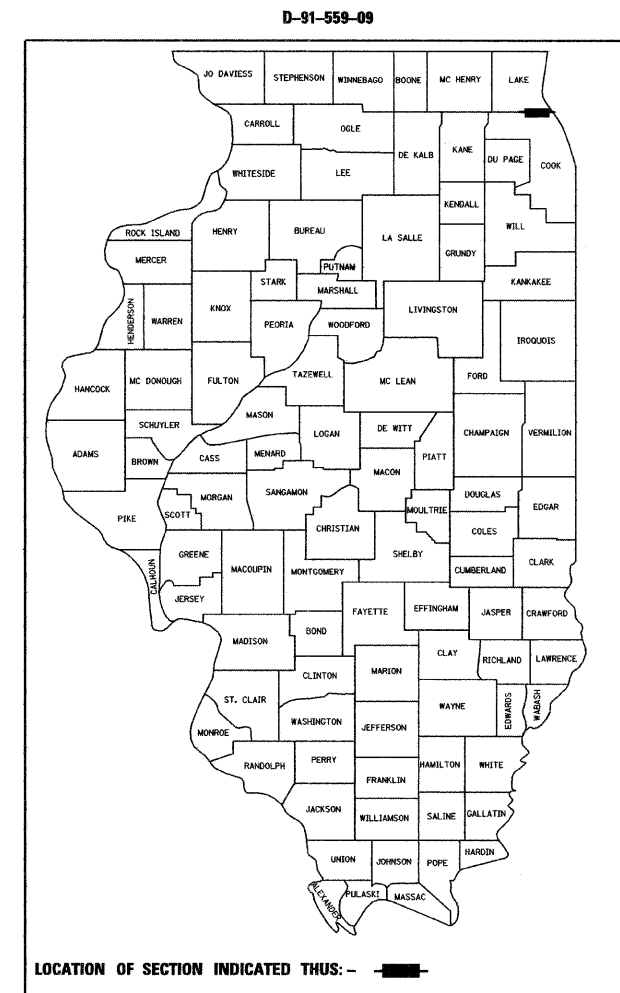
2006 ADT - 6,600
POSTED SPEED LIMIT - 35 MPH



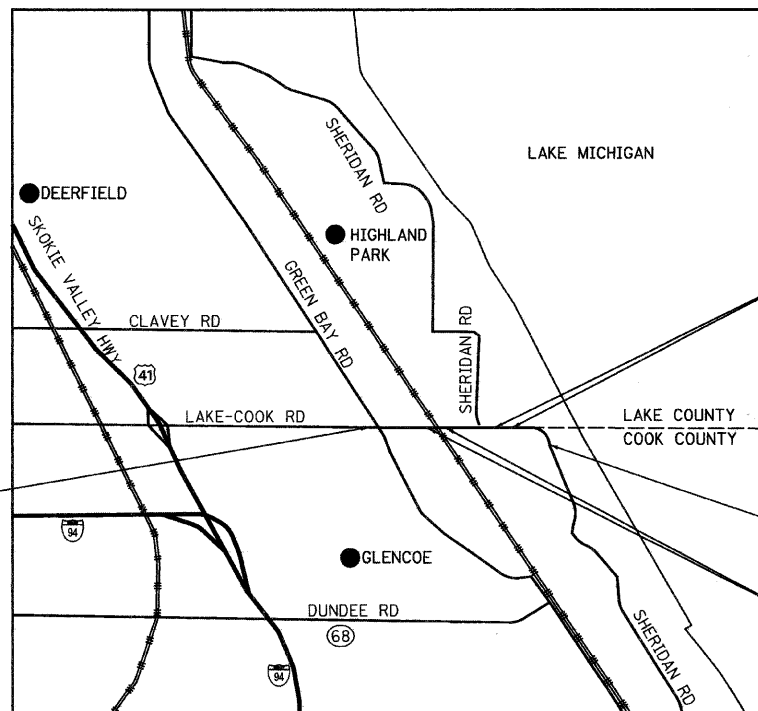
FULL SIZE PLANS HAVE BEEN PREPARED USING STANDARD ENGINEERING SCALES. REDUCED SIZED PLANS WILL NOT CONFORM TO STANDARD SCALES. IN MAKING MEASUREMENTS ON REDUCED PLANS, THE ABOVE SCALES MAY BE USED.

J.U.L.I.E.
JOINT UTILITY LOCATION INFORMATION FOR EXCAVATION
1-800-892-0123
OR 811

CONTRACT NO. 60H03



LOCATION OF SECTION INDICATED THUS: - [shaded box] -



BEGIN PROJECT
STA. 102+96

133+75
OMISSION
135+94

END PROJECT
STA. 148+00

117+74
OMISSION
118+60

Giorba Group, Inc.

DESIGN FIRM
REGISTRATION NUMBER

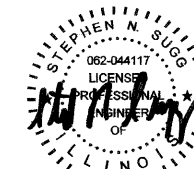
184-001016

CONSULTING ENGINEERS
SUITE 402, 5507 NORTH CUMBERLAND AVE
CHICAGO, ILLINOIS 60656 ☎ (773) 775-4009

MORaine & NEW TRIER TOWNSHIP

LOCATION MAP
1" = 2,500'

GROSS LENGTH OF PROJECT = 4,504 FT = 0.85 MI.
NET LENGTH OF PROJECT = 4,199 FT = 0.80 MI.



DATE: 4/13/2009
SEAL EXPIRES: 11/30/2009

STATE OF ILLINOIS
DEPARTMENT OF TRANSPORTATION
DIVISION OF HIGHWAYS

SUBMITTED APRIL 14, 2009

Diane M. O'Keefe
DEPUTY DIRECTOR OF HIGHWAYS, REGION ENGINEER

May 1, 2009

Charles G. Ingersoll
ENGINEER OF DESIGN AND ENVIRONMENT

May 1, 2009

Christine M. Reed
DIRECTOR OF HIGHWAYS, CHIEF ENGINEER

**PRINTED BY THE AUTHORITY
OF THE STATE OF ILLINOIS**

DISTRICT 1 DESIGN PLAN PREPARATION ENGINEER: K. ENG (847)705-4247