

STATE OF ILLINOIS  
 DEPARTMENT OF TRANSPORTATION  
 DIVISION OF HIGHWAYS  
**PROPOSED  
 HIGHWAY PLANS**  
 FAU ROUTE 1585 (119TH STREET)  
 LONGWOOD DRIVE TO ASHLAND AVENUE  
 SECTION: 2009-048RS  
 RESURFACING (3P)  
 COOK COUNTY  
 C-91-574-09

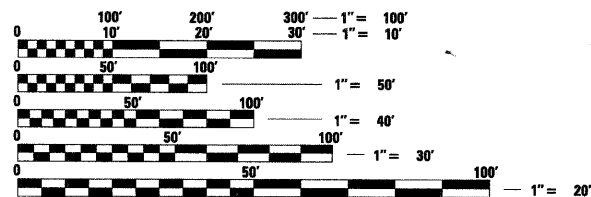
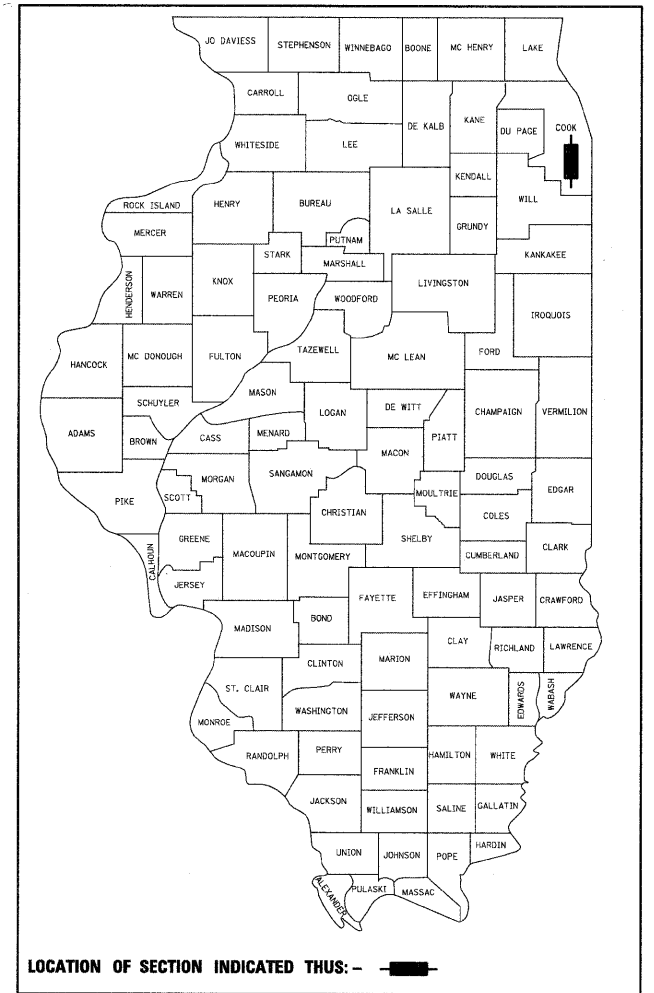
F.A.U. RTE.	SECTION	COUNTY	TOTAL SHEETS	SHEET NO.
1585	2009-048 RS	COOK	19	1
FED. ROAD DIST. NO.	ILLINOIS	CONTRACT NO. 60H18		

D-91-574-09

FOR INDEX OF SHEETS, SEE SHEET NO. 2

ADT 1600 (2009)  
 SPEED LIMIT 35 MPH

**OMMISSIONS**  
 STA. 96+14 TO STA. 98+46

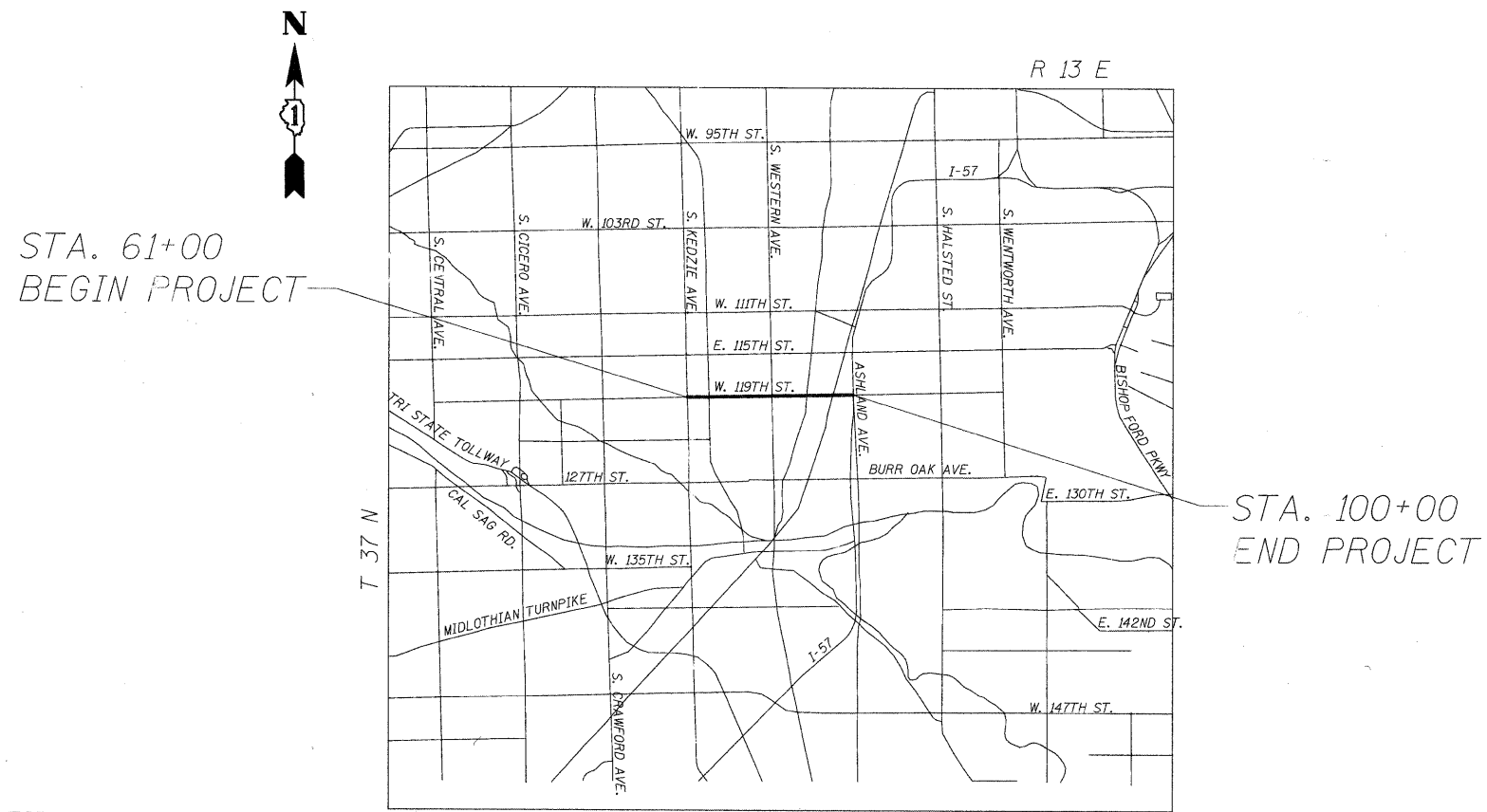


FULL SIZE PLANS HAVE BEEN PREPARED USING STANDARD ENGINEERING SCALES. REDUCED SIZED PLANS WILL NOT CONFORM TO STANDARD SCALES. IN MAKING MEASUREMENTS ON REDUCED PLANS, THE ABOVE SCALES MAY BE USED.

J.U.L.I.E.  
 JOINT UTILITY LOCATION INFORMATION FOR EXCAVATION  
 1-800-892-0123  
 OR 811

PROJECT ENGINEER: REJENDRA C. SHAH (847) 705-4555  
 PROJECT MANAGER: CATHERINE KIBBLE (847) 705-4269

CONTRACT NO. 60H18



GROSS LENGTH OF PROJECT = 3,900' = 0.739 MI  
 NET LENGTH OF PROJECT = 3,668' = 0.695 MI

STATE OF ILLINOIS  
 DEPARTMENT OF TRANSPORTATION  
 DIVISION OF HIGHWAYS

SUBMITTED APRIL 15 2009

Diana M. O'Keefe DEPUTY DIRECTOR OF HIGHWAYS, REGION ENGINEER

May 1, 2009  
Charles J. Ingersoll ENGINEER OF DESIGN AND ENVIRONMENT

May 1, 2009  
Christine M. Reed DIRECTOR OF HIGHWAYS, CHIEF ENGINEER

**PRINTED BY THE AUTHORITY  
 OF THE STATE OF ILLINOIS**

LONGCO, INC.  
 CONSULTING ENGINEERS  
 1560 WALL ST., SUITE 222  
 NAPERVILLE, ILLINOIS 60563 PH: (630) 577-9100

WILLIAM A. LEWIS  
 062-047827  
 REGISTERED  
 PROFESSIONAL  
 ENGINEER  
*William A. Lewis*  
 Expires 11-30-09