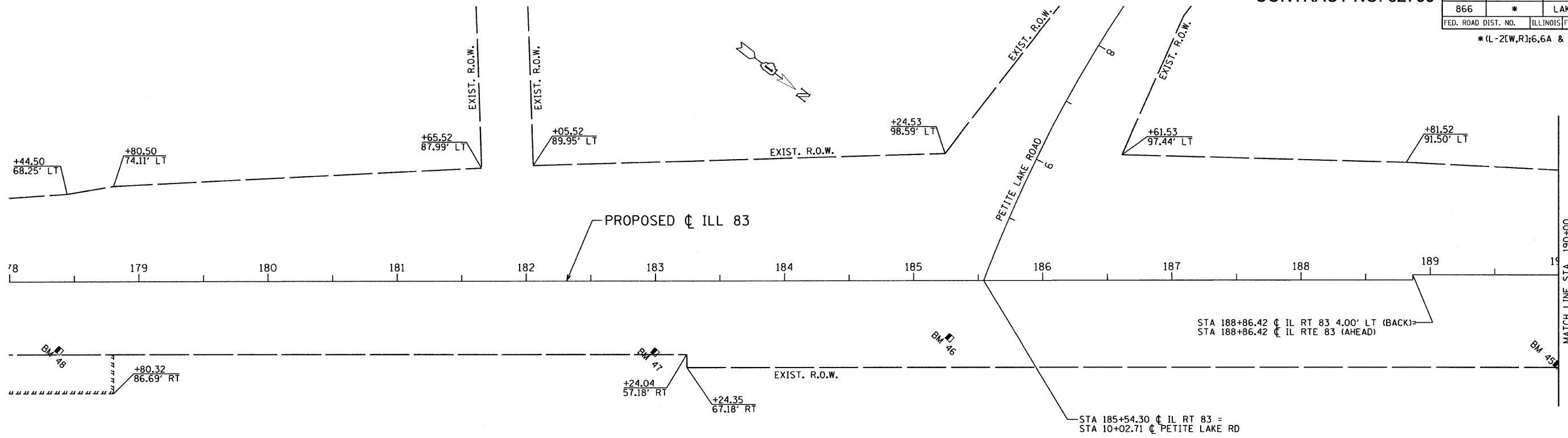
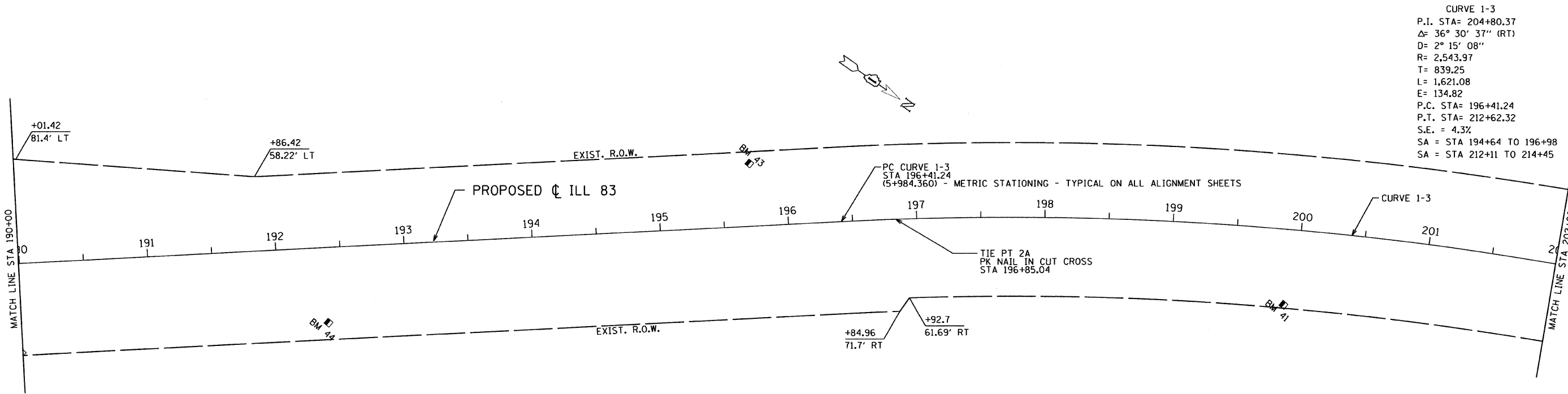


F.A. ROUTE NO.	SECTION	COUNTY	TOTAL SHEETS	SHEET NO.
866	*	LAKE	554	34
FED. ROAD DIST. NO.		ILLINOIS FED. AID PROJECT		
*(L-2(LW,R);6,6A & 6 EXT) WRS-1				

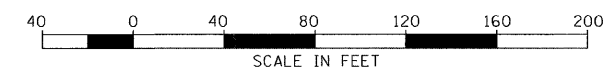


BM #	STATION	OFFSET	ELEVATION	DESCRIPTION
46	185+27.84	44.77 RT	796.79	'C' CUT NW CORNER IDOT TRAFFIC SIGNAL CABINET ON E. SIDE RTE 83 AT PETITE LAKE RD.
47	183+99.61	55.36 RT	796.65	TOP ROW MONUMENT AT N. GATE POST OF "SHEAS IRONWORKS" DRWY #736, E. SIDE RTE 83
48	178+38.05	53.41 RT	797.66	PK NAIL W. FACE PP ON E. SIDE RT. 83 @ "GREG LARSON EXCAVATING"
45	189+98.43	69.79 RT	795.71	TOP ROW MONUMENT ON E. SIDE RTE.83, 400' N OF PETITE LAKE RD.



CURVE 1-3
 P.I. STA= 204+80.37
 $\Delta = 36^\circ 30' 37''$ (RT)
 $D = 2^\circ 15' 08''$
 $R = 2,543.97$
 $T = 839.25$
 $L = 1,621.08$
 $E = 134.82$
 P.C. STA= 196+41.24
 P.T. STA= 212+62.32
 $S.E. = 4.3\%$
 $SA = STA 194+64 TO 196+98$
 $SA = STA 212+11 TO 214+45$

BM #	STATION	OFFSET	ELEVATION	DESCRIPTION
41	199+91.23	58.89 RT	795.07	PK NAIL W. FACE CABLE POLE ON E. SIDE RT. 83, ACROSS FROM TRANSF. POLE
43	195+72.03	49.06 LT	788.63	'C' CUT TOP W. HEADWALL OF 36" BOX CULVERT, 100' S. OF P.C. @ DRIVEWAY
44	192+38.24	58.46 RT	794.46	PK NAIL IN TRANSF. POLE E. SIDE RT.83, 600' N. PETITE LAKE RD.



REVISIONS	
NAME	DATE

ILLINOIS DEPARTMENT OF TRANSPORTATION
 ILLINOIS ROUTE 83
 FROM THE WISCONSIN STATE LINE TO
 NORTH OF PETITE LAKE ROAD
ALIGNMENT & TIE PLAN
 STA 178+00 TO STA 202+00
 DATE: 1/30/09
 DRAWN BY: BR
 CHECKED BY: MW

GRAEF, ANHALT, SCHLOEMER & ASSOCIATES, INC.
 CHICAGO, ILLINOIS

G:\20040424_N.ms\plan\set\at1e02.dgn 1/26/2009 8:33:43 AM

AT-1