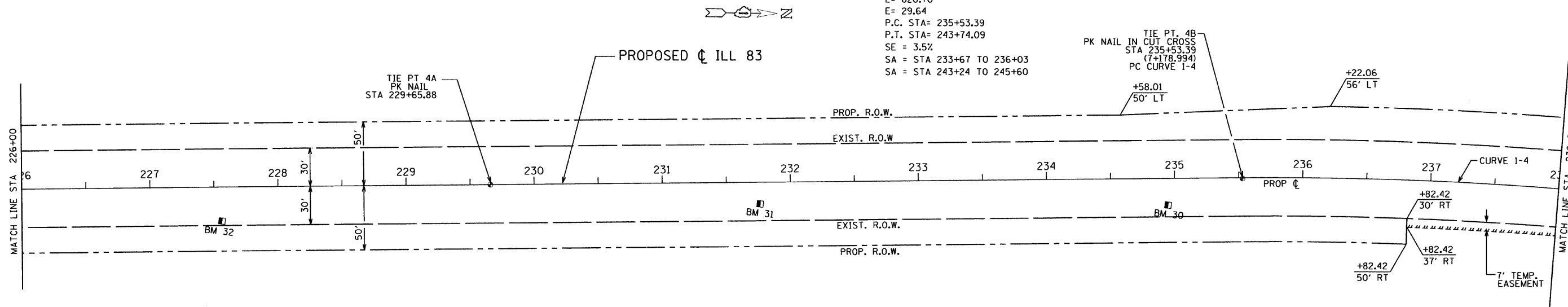


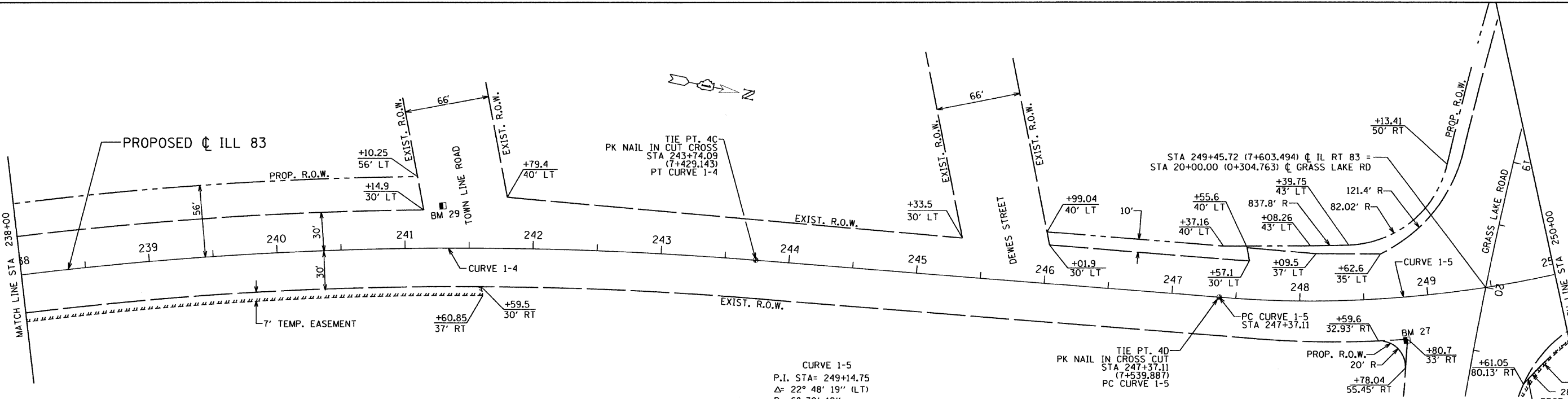
F.A. ROUTE NO.	SECTION	COUNTY	TOTAL SHEETS	SHEET NO.
866	*	LAKE	554	36
FED. ROAD DIST. NO.		ILLINOIS FED. AID PROJECT		

*(L-2LW,R)6,6A & 6 EXT) WRS-1

CURVE 1-4
 P.I. STA= 239+66.57
 $\Delta = 16^\circ 24' 49''$ (RT)
 $D = 2^\circ 00' 00''$
 $R = 2,864.87$
 $T = 413.18$
 $L = 820.70$
 $E = 29.64$
 P.C. STA= 235+53.39
 P.T. STA= 243+74.09
 $SE = 3.5\%$
 $SA = STA 233+67$ TO $236+03$
 $SA = STA 243+24$ TO $245+60$

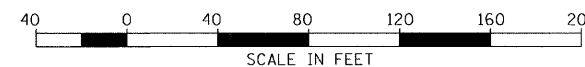


BM #	STATION	OFFSET	ELEVATION	DESCRIPTION
30	234+94.74	20.86 RT	782.69	'C' CUT ON HEADWALL OF GRAVEL DRIVE AT #77
31	231+76.43	16.33 RT	777.88	'C' CUT NEAR NORTH END HEADWALL ON EAST SIDE RTE 83 AND APPROX. 1000 FT S. OF TOWN LINE RD.
32	227+56.10	26.53 RT	780.08	RR SPIKE IN CABLE POLE ON E. SIDE RT. 83 @ DRIVE TO NEW BLDG., 500' N. OF WALL ST.



BM #	STATION	OFFSET	ELEVATION	DESCRIPTION
27	248+80.99	33.77 RT	784.68	'C' CUT SW CORNER CONC. BASE IDOT TRAFFIC CONTROL BOX AT SE CORNER RTE 83 AND GRASS LAKE RD.
29	241+29.71	33.14 LT	783.89	'C' ON TOP CONC. HEADWALL AT SW CORNER RTE 83 AND TOWN LINE RD.

CURVE 1-5
 P.I. STA= 249+14.75
 $\Delta = 22^\circ 48' 19''$ (LT)
 $D = 6^\circ 30' 18''$
 $R = 880.80$
 $T = 177.64$
 $L = 350.58$
 $E = 17.74$
 P.C. STA= 247+37.11
 P.T. STA= 250+87.69
 $SE = 2.0\%$
 $SA = 245+37$ TO $247+77$
 $SA = 250+48$ TO $252+88$



REVISIONS	
NAME	DATE

ILLINOIS DEPARTMENT OF TRANSPORTATION
 ILLINOIS ROUTE 83
 FROM THE WISCONSIN STATE LINE TO
 NORTH OF PETITE LAKE ROAD
ALIGNMENT & TIE PLAN
 STA 226+00 TO STA 250+00

DATE: 1/30/09
 DRAWN BY: BR
 CHECKED BY: MW

GRAEF, ANHALT, SCHLOEMER & ASSOCIATES, INC.
 CHICAGO, ILLINOIS

G:\2004\024\N\ms\plan\set\at\1e04.dgn
 1/26/2009 8:34:52 AM