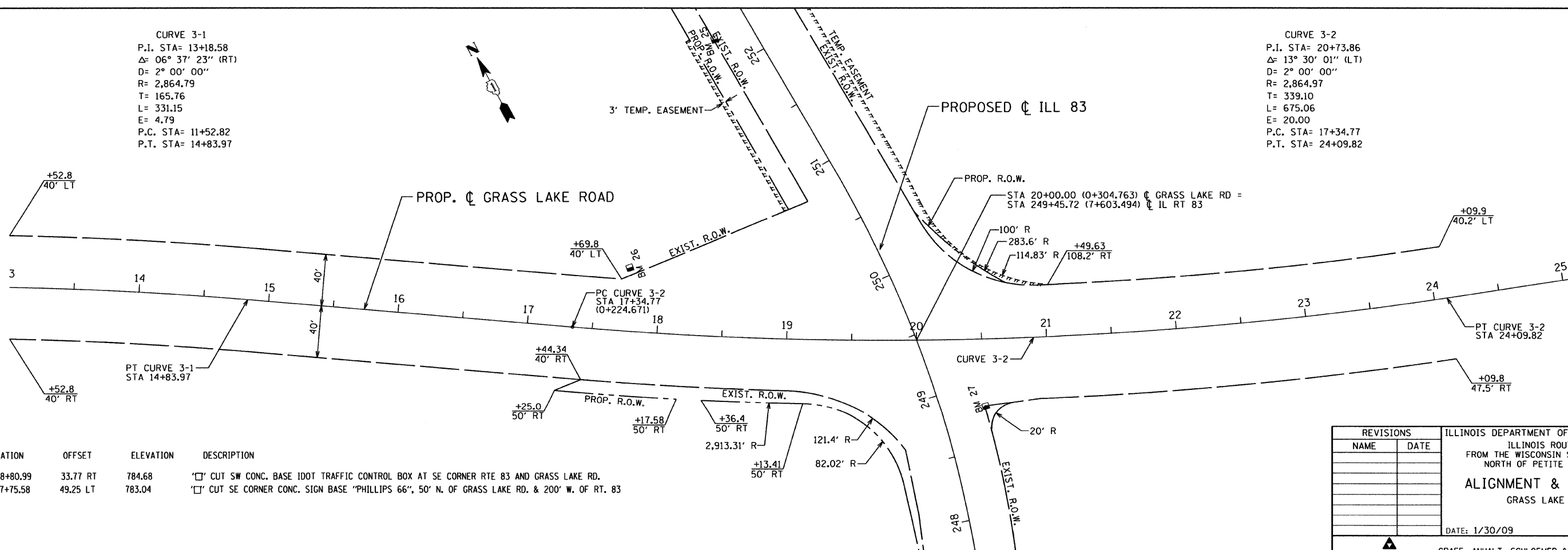


F.A. ROUTE NO.	SECTION	COUNTY	TOTAL SHEETS	SHEET NO.
866	*	LAKE	554	45
FED. ROAD DIST. NO.		ILLINOIS FED. AID PROJECT		
*(L-2(W,R);6,6A & 6 EXT) WRS-1				

CURVE 3-1
 P.I. STA= 13+18.58
 Δ = 06° 37' 23" (RT)
 D= 2° 00' 00"
 R= 2,864.79
 T= 165.76
 L= 331.15
 E= 4.79
 P.C. STA= 11+52.82
 P.T. STA= 14+83.97

CURVE 3-2
 P.I. STA= 20+73.86
 Δ = 13° 30' 01" (LT)
 D= 2° 00' 00"
 R= 2,864.97
 T= 339.10
 L= 675.06
 E= 20.00
 P.C. STA= 17+34.77
 P.T. STA= 24+09.82



BM #	STATION	OFFSET	ELEVATION	DESCRIPTION
27	248+80.99	33.77 RT	784.68	'□' CUT SW CONC. BASE IDOT TRAFFIC CONTROL BOX AT SE CORNER RTE 83 AND GRASS LAKE RD.
26	17+75.58	49.25 LT	783.04	'□' CUT SE CORNER CONC. SIGN BASE "PHILLIPS 66", 50' N. OF GRASS LAKE RD. & 200' W. OF RT. 83

REVISIONS	
NAME	DATE

ILLINOIS DEPARTMENT OF TRANSPORTATION
 ILLINOIS ROUTE 83
 FROM THE WISCONSIN STATE LINE TO
 NORTH OF PETITE LAKE ROAD
ALIGNMENT & TIE PLAN
 GRASS LAKE ROAD
 DATE: 1/30/09
 DRAWN BY: BR
 CHECKED BY: MW

GRAEF, ANHALT, SCHLOEMER & ASSOCIATES, INC.
 CHICAGO, ILLINOIS

G:\2009\04024_N\ms\plan\set\at11e13.dgn 1/26/2009 8:49:37 AM

AT-12