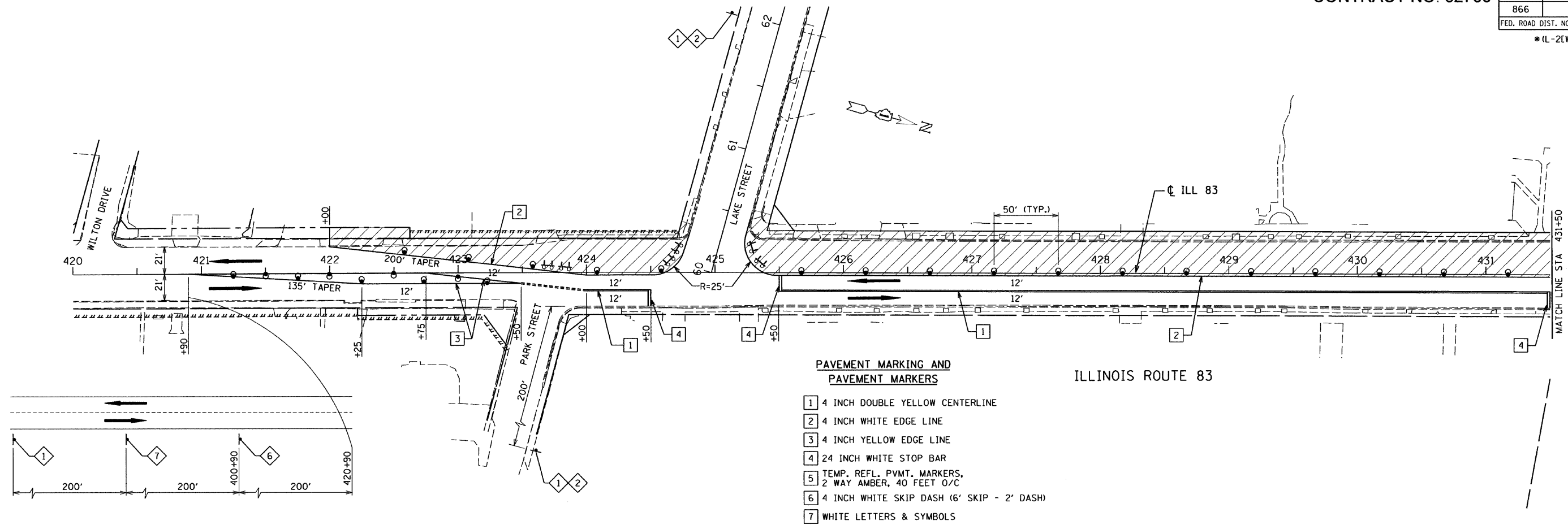
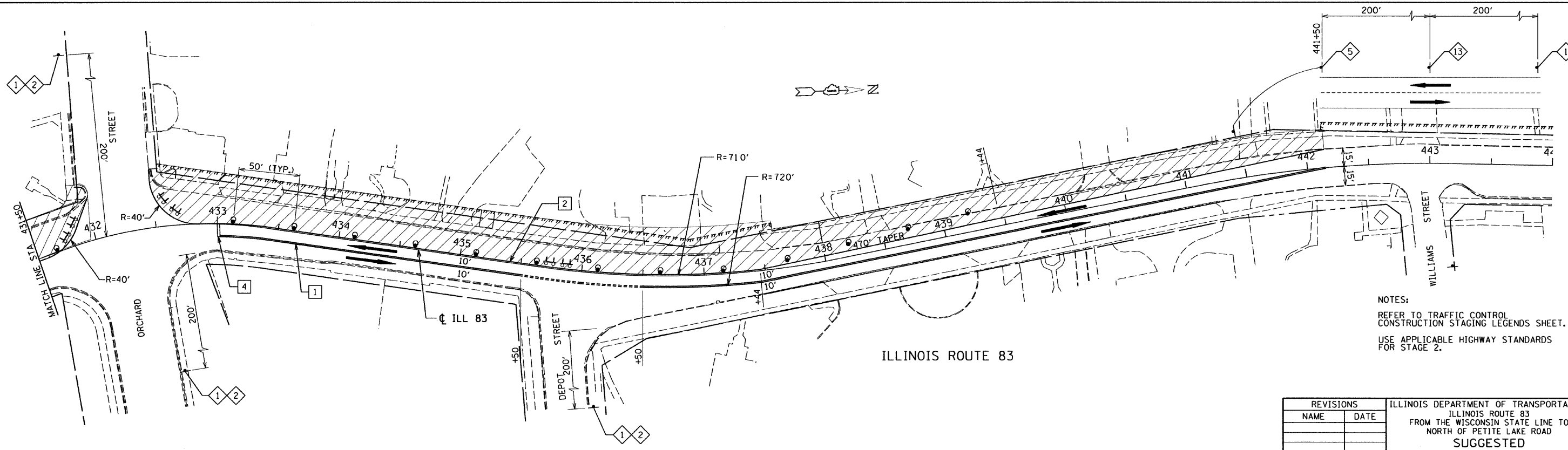
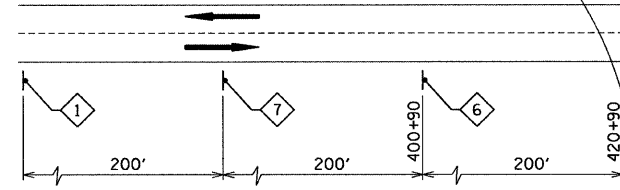


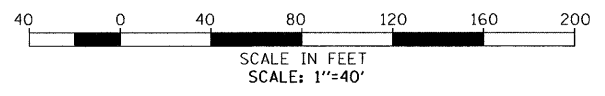
F.A. ROUTE NO.	SECTION	COUNTY	TOTAL SHEETS	SHEET NO.
866	*	LAKE	554	89
FED. ROAD DIST. NO.		ILLINOIS FED. AID PROJECT		
*(L-2(W,R);6,6A & 6 EXT) WRS-1				



- PAVEMENT MARKING AND PAVEMENT MARKERS**
- 1 4 INCH DOUBLE YELLOW CENTERLINE
 - 2 4 INCH WHITE EDGE LINE
 - 3 4 INCH YELLOW EDGE LINE
 - 4 24 INCH WHITE STOP BAR
 - 5 TEMP. REFL. PVMT. MARKERS, 2 WAY AMBER, 40 FEET O/C
 - 6 4 INCH WHITE SKIP DASH (6' SKIP - 2' DASH)
 - 7 WHITE LETTERS & SYMBOLS



NOTES:
 REFER TO TRAFFIC CONTROL CONSTRUCTION STAGING LEGENDS SHEET.
 USE APPLICABLE HIGHWAY STANDARDS FOR STAGE 2.



REVISIONS		ILLINOIS DEPARTMENT OF TRANSPORTATION ILLINOIS ROUTE 83 FROM THE WISCONSIN STATE LINE TO NORTH OF PETITE LAKE ROAD SUGGESTED CONSTRUCTION STAGING STORM SEWER CONSTRUCTION STA 420+00 TO STA 441+50 DATE: 1/30/09
NAME	DATE	
		DRAWN BY: EUB CHECKED BY: MW GRAEF, ANHALT, SCHLOEMER & ASSOCIATES, INC. CHICAGO, ILLINOIS