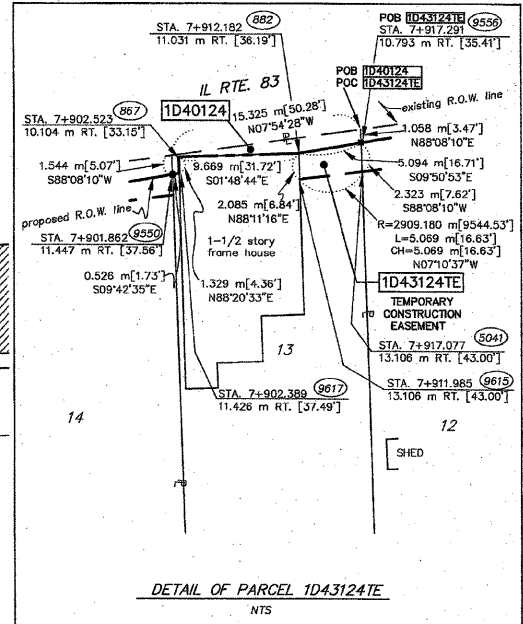
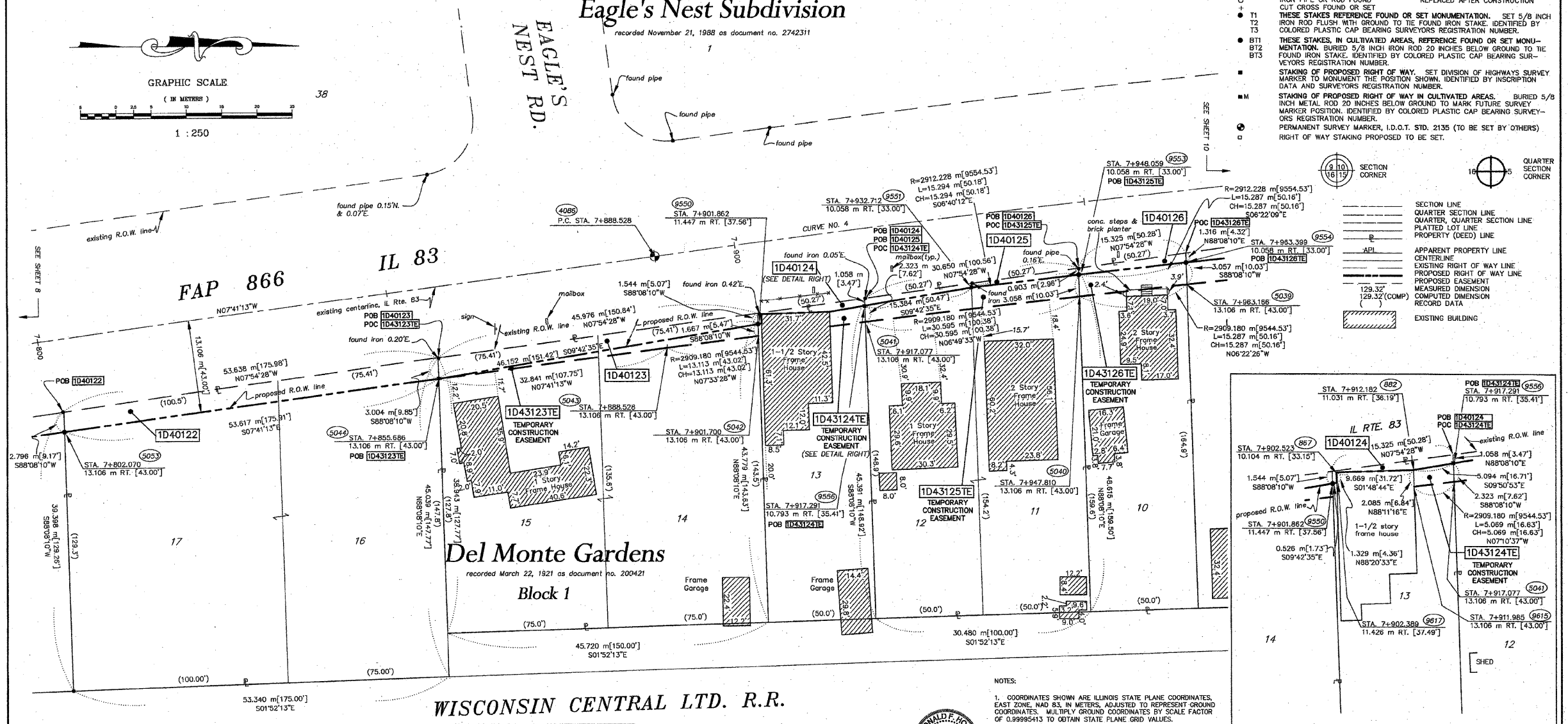
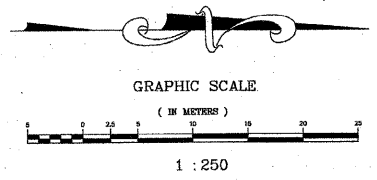


F.A. ROUTE NO.	SECTION	COUNTY	TOTAL SHEETS	SHEET NO.
866	*	LAKE	554	176
FED. ROAD DIST. NO.		ILLINOIS FED. AID PROJECT		
*(L-2[W,R]6,6A & 6 EXT) WRS-1				

PART OF THE SE. 1/4 OF SEC. 20, T.46 N., R. 10 E. OF THE 3rd P.M., IN LAKE COUNTY, ILLINOIS.



PARCEL NO.	OWNER	TOTAL HOLDING ACRES	PART TAKEN ACRES	REMAINDER ACRES	PREV. DED. ACRES	EASEMENT ACRES	EASEMENT PURPOSE	PERMANENT TAX INDEX NUMBER	PROPERTY ACQUIRED BY
1D40122	PATRICK JACKSON & MARY A.T. JACKSON	0.556	0.038	0.518	N/A	N/A	N/A	02-20-401-017	02-20-401-016
1D40123	DELORES D. STARR	0.467	0.026	0.441	N/A	N/A	N/A	02-20-401-015	02-20-401-014
1D43123	DELORES D. STARR	0.441	N/A	0.441	N/A	0.009	GRADING	02-20-401-036	02-20-401-037
1D40124	MERLE RAINES & SHARON TOBIAS	0.168	0.003	0.165	N/A	N/A	N/A	02-20-401-013	
1D43124	MERLE RAINES & SHARON TOBIAS	0.165	N/A	0.165	N/A	0.003	GRADING	02-20-401-061	
1D40125	ZABAVNI A-POPORUJOCI KLUB CESKO SLOVANSKYCH, SPAJENCU CORP.	0.354	0.006	0.348	N/A	N/A	N/A	02-20-401-012	02-20-401-011
1D43125	ZABAVNI POD CLUB	0.348	N/A	0.348	N/A	0.022	GRADING	02-20-401-039	02-20-401-040
1D40126	THERESA KROPIK & CHICAGO TITLE LAND TRUST CO., AS TRUSTEE, NO. 1107393	0.186	0.004	0.182	N/A	N/A	N/A	02-20-401-010	
1D43126	AUSON HEVRDEJS	0.182	N/A	0.182	N/A	0.012	GRADING	02-20-401-047	

STATE OF ILLINOIS)
COUNTY OF WILL) SS

THIS IS TO CERTIFY THAT RUETIGER, TONELLI & ASSOCIATES, INC., AN ILLINOIS DESIGN FIRM, HAS SURVEYED THE PLAT OF HIGHWAYS SHOWN HEREIN IN SECTION 20, TOWNSHIP 46 NORTH, RANGE 10 EAST OF THE THIRD PRINCIPAL MERIDIAN, LAKE COUNTY, THAT THE SURVEY IS TRUE AND COMPLETE AS SHOWN TO THE BEST OF MY KNOWLEDGE AND BELIEF, THAT THE PLAT CORRECTLY REPRESENTS SAID SURVEY, THAT ALL MONUMENTS FOUND AND ESTABLISHED ARE OF PERMANENT QUALITY AND OCCUPY THE POSITIONS SHOWN THEREON AND THAT THE MONUMENTS ARE SUFFICIENT TO ENABLE THE SURVEY TO BE RE-TRACED. MADE FOR THE DEPARTMENT OF TRANSPORTATION, STATE OF ILLINOIS.

DATED AT JOLIET, ILLINOIS THIS 20th DAY OF April 2008 A.D.

RONALD F. HODGEN P.L.S. NO. 2630
MY LICENSE EXPIRES NOVEMBER 30, 2008



- NOTES:
- COORDINATES SHOWN ARE ILLINOIS STATE PLANE COORDINATES, EAST ZONE, NAD 83, IN METERS, ADJUSTED TO REPRESENT GROUND COORDINATES. MULTIPLY GROUND COORDINATES BY SCALE FACTOR OF 0.99995413 TO OBTAIN STATE PLANE GRID VALUES.
 - BASES OF BEARINGS IS THE ILLINOIS STATE PLANE COORDINATE SYSTEM, EAST ZONE, NAD 83.
 - SEE SHEETS A30-A36 FOR COORDINATES AND REFERENCE TIES.
 - SHEET 1 IS A COVER SHEET AND IS NOT RECORDED.

CURVE DATA TABLE

Curve No.	Δ	T	L	E	PC STA.	PT STA.	PI STA.
No. 5	03°47'23"	317.20'	68.084 m	634.06'	9587.53'	529'	258+80.95
			136.161 m	5543.318 m	265+15.12	8+081.825	7+888.528
				0.4181 m	261+98.15	7+955.212	

RECEIVED
APR 22 2008
PLATS & LEGALS

RUETIGER, TONELLI & ASSOCIATES, INC.
Land Surveyors/Engineers/Planners/Landscape Architects/C.L.S. Consultants
274 5600 STREET
LAKE COUNTY, ILLINOIS 60059
PH: (815) 744-8800 FAX: (815) 744-0101

PLAT OF HIGHWAYS
STATE OF ILLINOIS
DEPARTMENT OF TRANSPORTATION
FAP 866 IL 83

SECTION 5VB-BR LAKE COUNTY
PROJECT JOB NO. R91-048-95
STATION 7+800 TO STATION 7+975
SCALE: 1:250 SHEET A9 OF A36

BUREAU OF LAND ACQUISITION
201 WEST CENTER COURT
SCHAUMBURG, ILLINOIS 60196