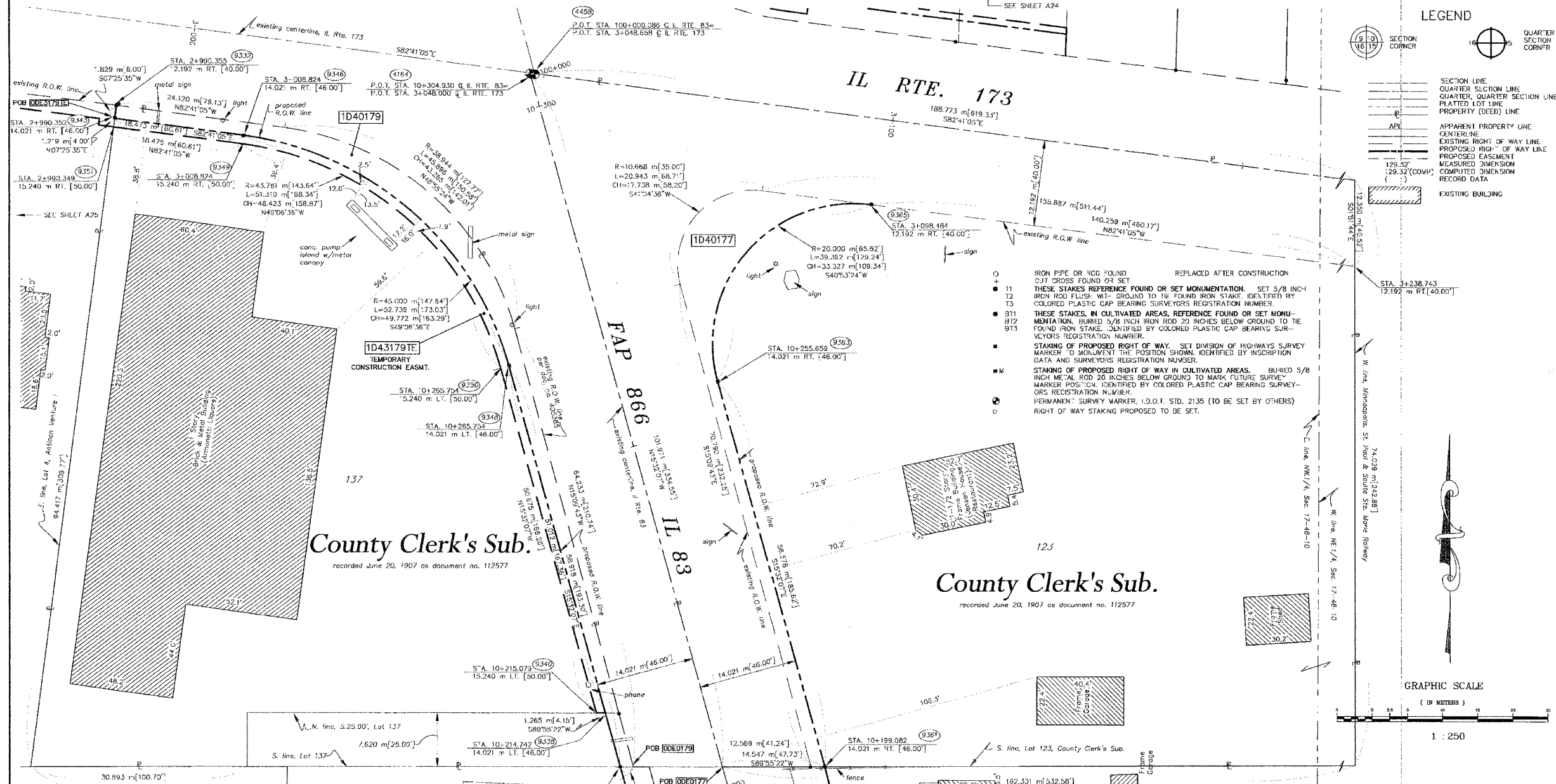


F.A. ROUTE NO.	SECTION	COUNTY	TOTAL SHEETS	SHEET NO.
866	*	LAKE	554	195
FED. ROAD DIST. NO.		ILLINOIS FED. AID PROJECT		
*(L-2[W,R]6,6A & 6 EXT) WRS-1				

PART OF THE NW. 1/4 & NE. 1/4 OF SEC. 17, T.46 N., R. 10 E. OF THE 3rd P.M., IN LAKE COUNTY, ILLINOIS.



PARCEL NO.	OWNER	TOTAL HOLDING ACRES	PART TAKEN ACRES	REMAINDER ACRES	PREV. DEED ACRES	EASEMENT ACRES	EASEMENT PURPOSE	PERMANENT TAX INDEX NUMBER	PROPERTY ACQUIRED BY
1040177	MICHAEL J. SEXTON & MARGARET M. SEXTON	3.678	0.919	2.757	0.848	N/A	N/A	02-17-105-00'	
1040179	DONALD KOSH, AS TRUSTEE OF THE DONALD KOSH REVOCABLE TRUST	1.477	0.078	1.399	N/A	N/A	N/A	02-17-101-056 02-17-101-058	
1043179	DONALD KOSH, AS TRUSTEE OF THE DONALD KOSH REVOCABLE TRUST	1.399	N/A	1.399	N/A	0.037	GRADING	02-17-101-096 02-17-101-097	

- NOTES:
- COORDINATES SHOWN ARE ILLINOIS STATE PLANE COORDINATES, EAST ZONE, NAD 83, IN METERS, ADJUSTED TO REPRESENT GROUND COORDINATES. MULTIPLY GROUND COORDINATES BY SCALE FACTOR OF 0.9999543 TO OBTAIN STATE PLANE GRID VALUES.
 - BASES OF BEARINGS IS THE ILLINOIS STATE PLANE COORDINATE SYSTEM, EAST ZONE, NAD 83.
 - SEE SHEETS A30-A36 FOR COORDINATES AND REFERENCE LINES.
 - SHEET 1 IS A COVER SHEET AND IS NOT RECORDED.



THIS IS TO CERTIFY THAT RONALD F. HODGEN, AN ILLINOIS PROFESSIONAL LAND SURVEYOR, HAS SURVEYED THE PLAT OF HIGHWAYS SHOWN HEREON IN SECTION 17, TOWNSHIP 46 NORTH, RANGE 10 EAST OF THE THIRD PRINCIPAL MERIDIAN, LAKE COUNTY, ILLINOIS, THAT THE SURVEY IS TRUE AND COMPLETE AS SHOWN TO THE BEST OF MY KNOWLEDGE AND BELIEF. THAT THE PLAT CORRECTLY REPRESENTS SAID SURVEY, THAT ALL MONUMENTS, MARKERS AND ESTABLISHED ARE OF PERMANENT QUALITY AND OCCUPY THE POSITIONS SHOWN THEREON AND THAT THE MONUMENTS ARE SUFFICIENT TO ENABLE THE SURVEY TO BE RE-TRACED, MADE FOR THE DEPARTMENT OF TRANSPORTATION, STATE OF ILLINOIS.

DATED AT JOLIET, ILLINOIS, THIS 13th DAY OF AUGUST, 2002 A.D.

ILLINOIS PROFESSIONAL LAND SURVEYOR NO. 2630

RUETTIGER, TONELLI & ASSOCIATES, INC.
 Land Surveyors/Engineers/Planners/Landscape Architects/C.I.S. Consultants
 3724 OGDEN STREET, SUITE 110, JOLIET, ILLINOIS 62450
 PH: (815) 744-8823 FAX: (815) 744-8800
 2000 SOUTH WASHINGTON STREET, SUITE 110, SCHMIDT, ILLINOIS 62450
 PH: (618) 428-7749 FAX: (618) 428-7742

PLAT OF HIGHWAYS
 STATE OF ILLINOIS
 DEPARTMENT OF TRANSPORTATION
 FAP 866 IL 83

SECTION 5VB-BR LAKE COUNTY
 PROJECT JOB NO. R91-048-95
 STATION 3+000(Rte. 173) TO STATION 3+250(Rte. 173)
 SCALE: 1:250 SHEET A28 OF A36

BUREAU OF LAND ACQUISITION
 201 WEST CENTER COURT
 SCHAUMBURG, ILLINOIS 60196

REVISION DATE: 10/30/07	REVISION: CHANGED 0179TE TO 3179'E	MADE BY: JMH
-------------------------	------------------------------------	--------------