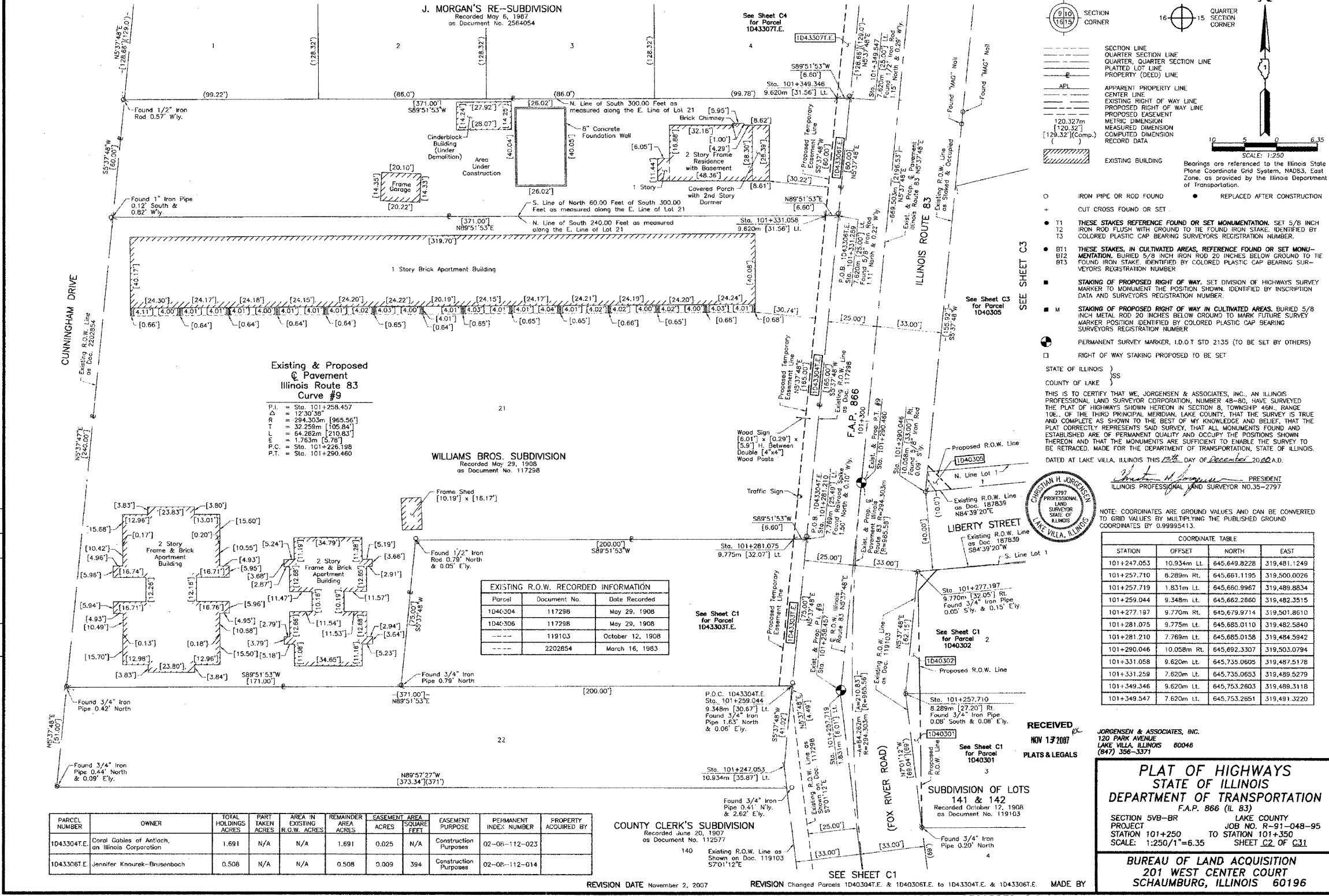


F.A. ROUTE NO.	SECTION	COUNTY	TOTAL SHEETS	SHEET NO.
866	*	LAKE	554	221
FED. ROAD DIST. NO.	ILLINOIS FED. AID PROJECT			
*(L-2[W,R]6,6A & 6 EXT) WRS-1				

PART OF THE NW 1/4 OF SEC. 8, TWP. 46 N., R. 10 E. OF THE 3RD. P.M., IN LAKE COUNTY, ILLINOIS.



LEGEND

- SECTION CORNER
- QUARTER SECTION CORNER
- SECTION LINE
- QUARTER SECTION LINE
- QUARTER, QUARTER SECTION LINE
- PLATTED LOT LINE
- PROPERTY (DEED) LINE
- APL APPARENT PROPERTY LINE
- CENTER LINE
- EXISTING RIGHT OF WAY LINE
- PROPOSED RIGHT OF WAY LINE
- PROPOSED EASEMENT
- METRIC DIMENSION
- MEASURED DIMENSION
- COMPUTED DIMENSION
- RECORD DATA
- EXISTING BUILDING

Scale: 1:250

Bearings are referenced to the Illinois State Plane Coordinate Grid System, NAD83, East Zone, as provided by the Illinois Department of Transportation.

Existing & Proposed Pavement Illinois Route 83 Curve #9

P.I.	= Sta. 101+258.457
Δ	= 1230.38'
T.R.	= 294.303m [965.56']
T.P.	= 32.259m [106.84']
M.P.	= 64.262m [210.83']
P.C.	= Sta. 101+226.198
P.T.	= Sta. 101+290.460

EXISTING R.O.W. RECORDED INFORMATION

Parcel	Document No.	Date Recorded
1040304	117298	May 29, 1908
1040306	117298	May 29, 1908
---	119103	October 12, 1908
---	2202854	March 16, 1983

DATE	BY	REVISION

PARCEL NUMBER	OWNER	TOTAL HOLDINGS ACRES	PART TAKEN ACRES	AREA IN EXISTING R.O.W. ACRES	REMAINDER AREA ACRES	EASEMENT ACRES	EASEMENT AREA SQUARE FEET	EASEMENT PURPOSE	PERMANENT INDEX NUMBER	PROPERTY ACQUIRED BY
1043304T.E.	Coral Gables of Antioch, an Illinois Corporation	1.691	N/A	N/A	1.691	0.025	N/A	Construction Purposes	02-08-112-023	
1043306T.E.	Jennifer Knourek-Brusenbach	0.508	N/A	N/A	0.508	0.009	394	Construction Purposes	02-08-112-014	

COORDINATE TABLE

STATION	OFFSET	NORTH	EAST
101+247.053	10.934m LL	645,649.8228	319,481.1249
101+257.710	8.289m Rt.	645,661.1195	319,500.0026
101+257.719	1.831m LL	645,660.9967	319,489.8834
101+259.044	9.348m Lt.	645,662.2860	319,482.3515
101+277.197	9.770m Rt.	645,679.9714	319,501.8610
101+281.075	9.775m Lt.	645,685.0110	319,482.5840
101+281.210	7.769m Lt.	645,685.0158	319,484.5942
101+290.046	10.058m Rt.	645,692.3307	319,503.0794
101+331.058	9.620m Lt.	645,735.0603	319,487.5178
101+331.259	7.620m Lt.	645,735.0653	319,489.5279
101+349.346	9.620m Lt.	645,753.2803	319,489.3118
101+349.547	7.620m Lt.	645,753.2851	319,491.3220

RECEIVED NOV 17 2007 PLATS & LEGALS

JORGENSEN & ASSOCIATES, INC.
120 PARK AVENUE
LAKE VILLA, ILLINOIS 60046
(847) 356-3371

PLAT OF HIGHWAYS STATE OF ILLINOIS

DEPARTMENT OF TRANSPORTATION
F.A.P. 866 (IL 83)

SECTION 5VB-BR LAKE COUNTY
PROJECT JOB NO. R-91-048-95
STATION 101+250 TO STATION 101+350
SCALE: 1:250/1"=6.35 SHEET C2 OF C31

BUREAU OF LAND ACQUISITION
201 WEST CENTER COURT
SCHAUMBURG, ILLINOIS 60196