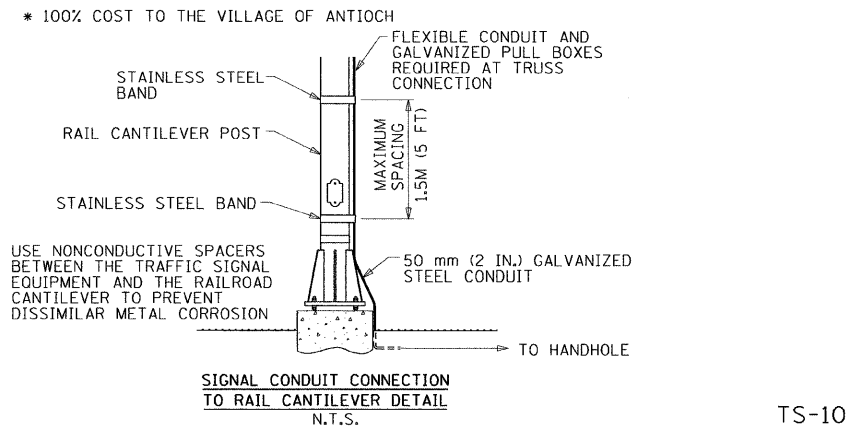


F.A.P. No.	SECTION	COUNTY	TOTAL SHEETS	SHEET NO.
866	*	LAKE	554	276
STA.		TO STA.		
FED. ROAD DIST. NO.		ILLINOIS	FED. AID PROJECT	

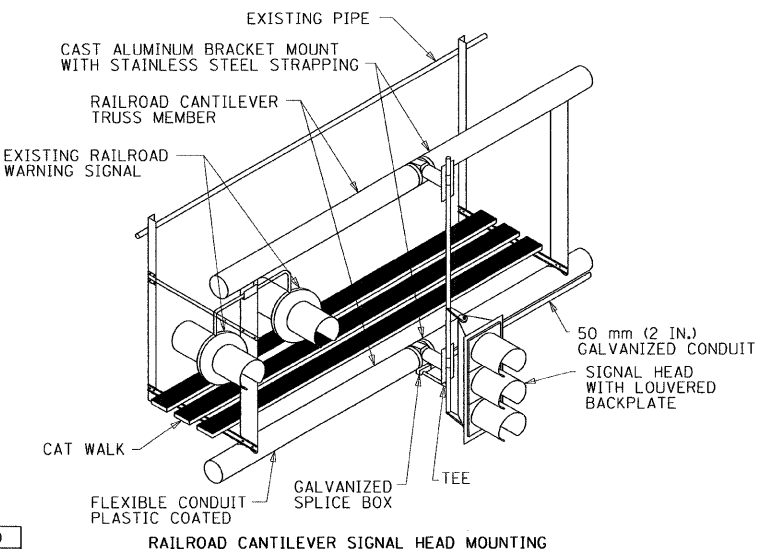
CONTRACT #62700
* (L-2(W,R); 6.6A & 6EXTIWS-1)

SCHEDULE OF QUANTITIES

PAY ITEM	UNITS	TOTAL
SIGN PANEL - TYPE 1	SQ FT	18
SIGN PANEL - TYPE 2	SQ FT	25
CONDUIT IN TRENCH, 2" DIA., GALVANIZED STEEL	FOOT	484
CONDUIT IN TRENCH, 2 1/2" DIA., GALVANIZED STEEL	FOOT	170
CONDUIT IN TRENCH, 4" DIA., GALVANIZED STEEL	FOOT	275
CONDUIT PUSHED, 2" DIA., GALVANIZED STEEL	FOOT	90
CONDUIT PUSHED, 4" DIA., GALVANIZED STEEL	FOOT	350
HANDHOLE	EACH	8
HEAVY-DUTY HANDHOLE	EACH	4
DOUBLE HANDHOLE	EACH	1
TRENCH AND BACKFILL FOR ELECTRICAL WORK	FOOT	924
FULL-ACTUATED CONTROLLER AND TYPE IV CABINET	EACH	1
ELECTRIC CABLE IN CONDUIT, SIGNAL NO. 14 3C	FOOT	285
ELECTRIC CABLE IN CONDUIT, SIGNAL NO. 14 5C	FOOT	1930
ELECTRIC CABLE IN CONDUIT, SIGNAL NO. 14 7C	FOOT	2550
ELECTRIC CABLE IN CONDUIT, LEAD-IN, NO. 14 1 PAIR	FOOT	3035
ELECTRIC CABLE IN CONDUIT, SERVICE, NO. 6 2 C	FOOT	75
TRAFFIC SIGNAL POST, GALVANIZED STEEL 12 FT.	EACH	1
TRAFFIC SIGNAL POST, GALVANIZED STEEL 14 FT.	EACH	1
TRAFFIC SIGNAL POST, GALVANIZED STEEL 16 FT.	EACH	3
TRAFFIC SIGNAL POST, GALVANIZED STEEL 18 FT.	EACH	1
STEEL MAST ARM ASSEMBLY AND POLE, 36 FT.	EACH	2
STEEL MAST ARM ASSEMBLY AND POLE, 38 FT.	EACH	2
CONCRETE FOUNDATION, TYPE A	FOOT	24
CONCRETE FOUNDATION, TYPE C	FOOT	4
CONCRETE FOUNDATION, TYPE E, 30-INCH DIAMETER	FOOT	54
TRAFFIC SIGNAL BACKPLATE, LOUVERED, ALUMINUM	EACH	9
INDUCTIVE LOOP DETECTOR	EACH	11
DETECTOR LOOP, TYPE I	FOOT	955
LIGHT DETECTOR	EACH	2
LIGHT DETECTOR AMPLIFIER	EACH	1
TEMPORARY TRAFFIC SIGNAL INSTALLATION	EACH	1
REMOVE EXISTING TRAFFIC SIGNAL EQUIPMENT	EACH	1
REMOVE EXISTING HANDHOLE	EACH	6
REMOVE EXISTING CONCRETE FOUNDATION	EACH	9
ILLUMINATED SIGN, LED	EACH	4
SERVICE INSTALLATION, POLE MOUNT	EACH	1
ELECTRIC CABLE IN CONDUIT, GROUNDING, NO. 6 1C	FOOT	1145
ELECTRIC CABLE IN CONDUIT NO. 20 3/C, TWISTED, SHIELDED	FOOT	285
SIGNAL HEAD, LED, 1-FACE, 3-SECTION, MAST ARM MOUNTED	EACH	4
SIGNAL HEAD, LED, 1-FACE, 3-SECTION, BRACKET MOUNTED	EACH	1
SIGNAL HEAD, LED, 1-FACE, 5-SECTION, BRACKET MOUNTED	EACH	2
SIGNAL HEAD, LED, 1-FACE, 5-SECTION, MAST ARM MOUNTED	EACH	5
SIGNAL HEAD, LED, 2-FACE, 1-3 SECTION, 1-5 SECTION, BRACKET MOUNTED	EACH	3
ELECTRIC CABLE IN CONDUIT, RAILROAD NO. 14 3C	FOOT	315
UN-INTERRUPTABLE POWER SUPPLY	EACH	1
TEMPORARY TRAFFIC SIGNAL TIMINGS	EACH	1



- CABLE PLAN LEGEND**
- | | | |
|-----------------|-----------------|---|
| EXISTING | PROPOSED | |
| (G) | (G) | 8" (200mm) TRAFFIC SIGNAL SECTION |
| (R) | (R) | 12" (300mm) TRAFFIC SIGNAL SECTION |
| (W) | (W) | 12" (300mm) PEDESTRIAN SIGNAL SECTION |
| (H) | (H) | 12" (300mm) PEDESTRIAN SIGNAL SECTION |
| (C) | (C) | CONTROLLER CABINET |
| (S) | (S) | SERVICE INSTALLATION |
| (V) | (V) | VEHICLE DETECTOR, INDUCTION LOOP |
| (T) | (T) | TELEPHONE INSTALLATION |
| (M) | (M) | MAGNETIC DETECTOR |
| (E) | (E) | EMERGENCY VEHICLE LIGHT DETECTOR |
| (B) | (B) | CONFIRMATION BEACON |
| (P) | (P) | PUSHBUTTON DETECTOR |
| (2) | (2) | 2 DENOTES NUMBER OF CONDUCTORS, ALL CABLE NO. 14 EXCEPT AS INDICATED, ALL LOOP DETECTOR CABLE TO BE SHIELDED. |
| (1) | (1) | 1 GROUND CABLE IN CONDUIT NO. 6 SOLID COPPER (GREEN) |
| (24) | (24) | 24 FIBER OPTIC CABLE IN CONDUIT NO. 62.5/125 2-MM12F SM12F |
| (R Y G) | (R Y G) | SIGNAL FACE WITH BACK PLATE "P" INDICATES PROGRAMMED HEAD. |
| "P" | "P" | RAILROAD CONTROL CABINET |
| "E" | "E" | ILLUMINATED SIGN "NO LEFT TURN" |
| "E" | "E" | ILLUMINATED SIGN "NO RIGHT TURN" |
| H/C | C | GROUND ROD AT HANDHOLE (H), DOUBLE HANDHOLE (H), OR CONTROLLER (C) |
| P | P | GROUND ROD AT POST (P) OR MAST ARM POLE (MA) |
| S | S | GROUND ROD AT ELECTRIC SERVICE INSTALLATION |
| S | S | UNINTERRUPTED POWER SUPPLY |
| (U) | (U) | UNINTERRUPTIBLE POWER SUPPLY (UPS) |

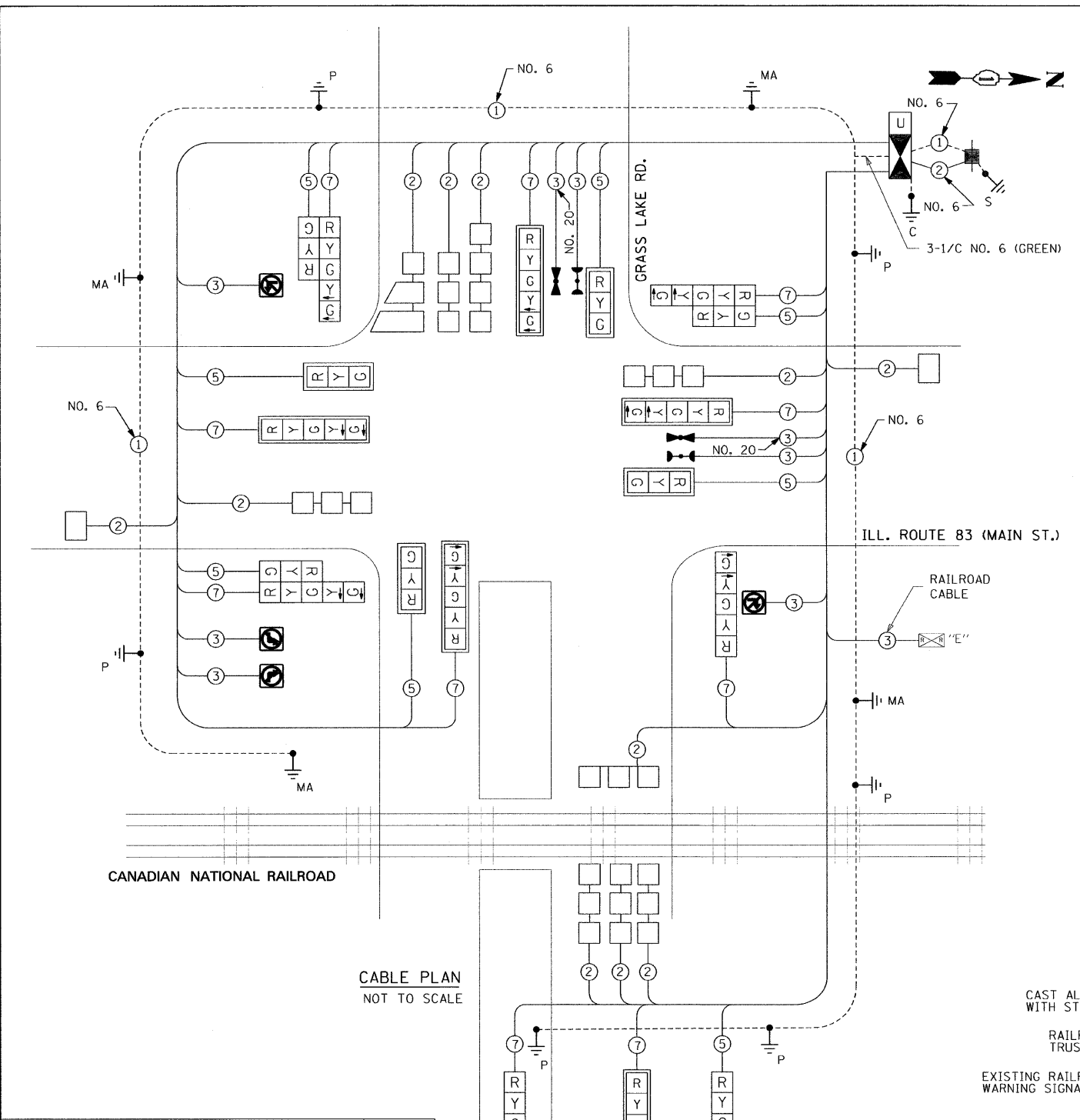


USE NONCONDUCTIVE SPACERS BETWEEN THE TRAFFIC SIGNAL EQUIPMENT AND THE RAILROAD CANTILEVER TO PREVENT DISSIMILAR METAL CORROSION

GRAEF ANHALT SCHLOEMER
and Associates Inc.
GRAEF, ANHALT, SCHLOEMER & ASSOCIATES, INC.
CHICAGO, ILLINOIS
773 399-0112

REVISIONS		ILLINOIS DEPARTMENT OF TRANSPORTATION
NAME	DATE	
		CABLE PLAN, PHASE DESIGNATION DIAGRAM AND SCHEDULE OF QUANTITIES ILL. ROUTE 83 (MAIN ST.) AND GRASS LAKE ROAD

SCALE: NONE
DATE: 1/30/09
DRAWN BY: RV
DESIGNED BY: RS
CHECKED BY: AZ



NOTE: EQUIPMENT GROUND CONDUCTOR (GREEN COLOR CODED) SPLICE TO FRAME AND COVER IS REQUIRED FOR ALL HANDHOLES AND DOUBLE HANDHOLES THAT CARRY SIGNAL CABLES AND SERVICE CABLES.

FOUNDATION (DEPTH)	(FT.) (m)	CABLE SLACK	(FT.) (m)	CABLE SLACK	(FT.) (m)
TYPE A - POST	4 (1.2)	HANDHOLE	6.5 (2.0)	ALL FOUNDATIONS	3.5 (1.0)
D - CONTROLLER	4 (1.2)	DOUBLE HANDHOLE	13 (4.0)	MAST ARM (L) POLE	20'-H-2= (6m-H-0.6m)=
E - M. ARM POLE	2 (0.6)	SIGNAL POST	2 (0.6)	BRACKET MOUNTED	13 (4.0)
24" (600mm)	10 (3.0)	CONTROLLER CAB.	1 (0.5)	PED. PUSHBUTTON	4 (1.2)
30" (750mm)	15 (4.6)	FIBER OPTIC	15 (4.6)	ELECTRIC SERVICE	13.5 (4.1)
		ELECTRIC SERVICE	1 (0.5)	SERVICE TO GROUND	13.5 (4.1)
		GROUND CABLE	1 (0.5)	POST MOUNTED	6 (1.8)

I.D.O.T. TRAFFIC SIGNAL INSTALLATION ELECTRICAL SERVICE REQUIREMENTS					TOTAL WATTAGE
TYPE	NO. LAMPS	WATTAGE INCAND.	WATTAGE LED	% OPERATION	
SIGNAL (RED)	18	135	17	0.50	153
(YELLOW)	18	135	25	0.25	112.5
(GREEN)	18	135	15	0.25	67.5
ARROW	20	135	12	0.10	24
PED. SIGNAL	-	90	25	1.00	-
CONTROLLER	1	100	100	1.00	100
ILLUM. SIGN	4	84	35	0.05	7.0
FLASHER		135	25	0.50	-
TOTAL =					464

ENERGY COST TO: Illinois Department of Transportation
Division of Highways / District 1
201 W Center Court/Schaumburg, Illinois 60196-1096

ENERGY SUPPLY: CONTACT: Mr. Amador Velez
PHONE: 847-816-5248
COMPANY: ComEd

C:\2009\4024_N\F\file Transfer\in\k\k\k\7-9-08\Contract BYTS-10.dwg 1/27/2009