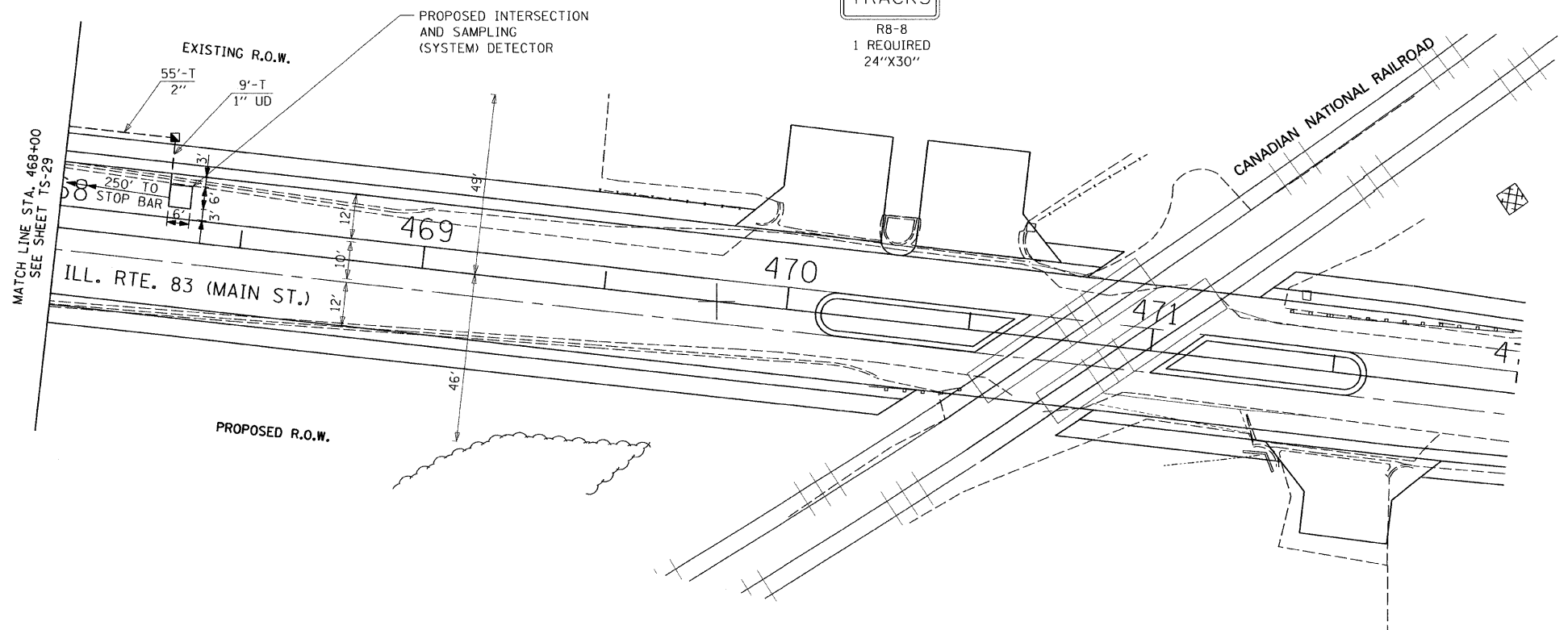
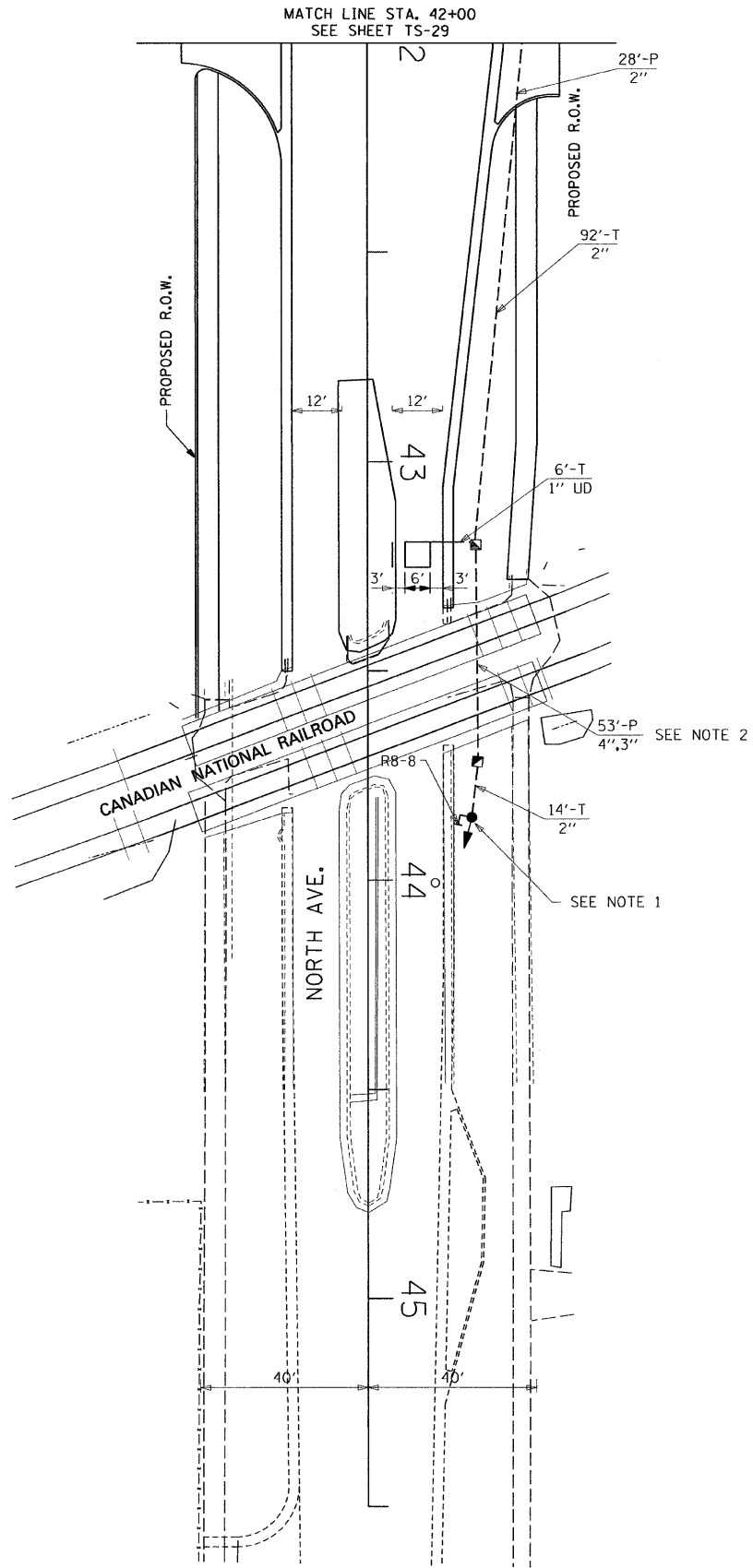
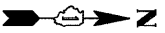


F.A.P. RTE.	SECTION	COUNTY	TOTAL SHEETS	SHEET NO.
866	*	LAKE	554	296
STA.		TO STA.		
FED. ROAD DIST. NO.		ILLINOIS FED. AID PROJECT		
CONTRACT #62700				
* (L-2LW,R); 6,6A & 6EXT)WRS-1				

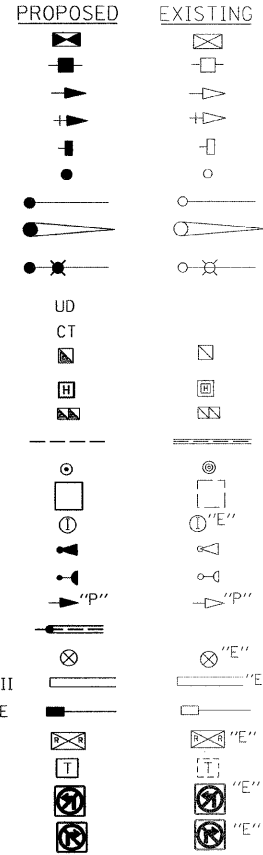
DO NOT STOP ON TRACKS

R8-8
1 REQUIRED
24"X30"



TRAFFIC SIGNAL LEGEND

- CONTROLLER
- SERVICE INSTALLATION
- SIGNAL HEAD
- SIGNAL HEAD WITH BACK PLATE
- SIGNAL HEAD, PEDESTRIAN
- SIGNAL POST
- MAST ARM ASSEMBLY AND POLE, STEEL
- MAST ARM ASSEMBLY AND POLE, ALUMINUM
- COMBINATION MAST ARM ASSEMBLY AND POLE, STEEL WITH LUMINAIRE
- UNIT DUCT
- COMMON TRENCH
- HANDHOLE
- HEAVY DUTY HANDHOLE
- DOUBLE HANDHOLE
- G.S. CONDUIT IN TRENCH (T) OR PUSHED (P)
- PEDESTRIAN PUSHBUTTON DETECTOR
- DETECTOR LOOP
- CAST IRON JUNCTION BOX
- EMERGENCY VEHICLE LIGHT DETECTOR
- CONFIRMATION BEACON
- SIGNAL HEAD OPTICALLY PROGRAMMED
- CONDUIT SPLICE
- WOOD POLE
- RACEWAY FOR MAGNETIC DETECTOR, TYPE I OR TYPE II
- VEHICLE DETECTOR, NON COMPENSATED MAGNETIC TYPE
- RAILROAD CONTROL CABINET
- TELEPHONE CONNECTION
- ILLUMINATED SIGN "NO LEFT TURN"
- ILLUMINATED SIGN "NO RIGHT TURN"



NOTE:

1. CONTRACTOR SHALL INSTALL A FLASHING 1-FACE, 1-SECTION YELLOW SIGNAL ON A WOOD POST PER THE DETAIL ON TS-16. THE SIGNAL SHALL EITHER FLASH OR REMAIN DARK AS PER THE SEQUENCE OF OPERATION (TS-32) AND THE EMERGENCY VEHICLE SEQUENCE OF OPERATION (TS-33). AN "R8-8" SIGN SHALL ALSO BE INSTALLED ON THE POST. THIS WORK SHALL BE PAID FOR AS "POST MOUNTED FLASHING BEACON INSTALLATION (SPECIAL)."
2. A 3" CONDUIT SHALL BE ENCASED IN A 4" CONDUIT. THE CONDUITS SHALL BE INSTALLED AT A MINIMUM DEPTH OF 5 FEET BELOW THE RAILROAD TRACKS

RESTORATION OF WORK AREA. RESTORATION OF THE TRAFFIC SIGNAL WORK AREA SHALL BE INCIDENTAL TO THE RELATED PAY ITEM SUCH AS FOUNDATION, CONDUIT, HANDHOLE, TRENCH AND BACKFILL, ETC., AND NO EXTRA COMPENSATION SHALL BE ALLOWED. ALL ROADWAY SURFACES SUCH AS SHOULDERS, MEDIAN, SIDEWALKS, PAVEMENT ETC. SHALL BE REPLACED IN KIND. ALL DAMAGE TO MOWED LAWNS SHALL BE REPLACED WITH AN APPROVED SOD, AND ALL DAMAGE TO UNMOWED FIELDS SHALL BE SEEDED IN ACCORDANCE WITH STANDARD SPECIFICATIONS 252 AND 250 RESPECTIVELY.

REVISIONS	
NAME	DATE

ILLINOIS DEPARTMENT OF TRANSPORTATION

TRAFFIC SIGNAL INSTALLATION PLAN
ILL. ROUTE 83 (MAIN ST.) AND NORTH AVE.
SHEET 2 OF 2

SCALE: 1"=20'
DATE: 1/30/09

DRAWN BY: RV
DESIGNED BY: RS
CHECKED BY: AZ



G:\2009\04024_N\File Transfer\In\KAM\7-9-08\Contract B\TS-30.sht 1/27/2009

TS-30