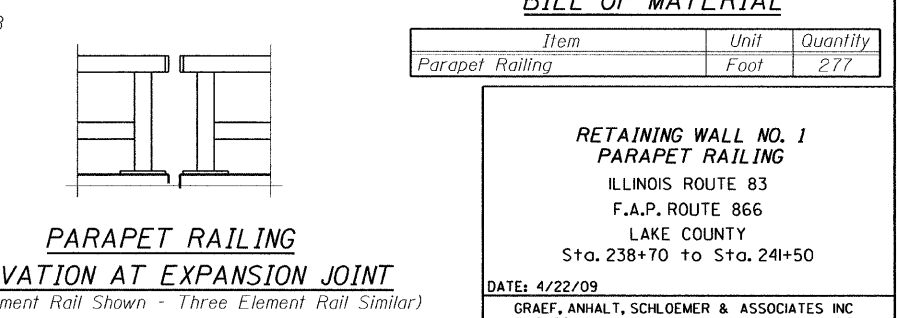
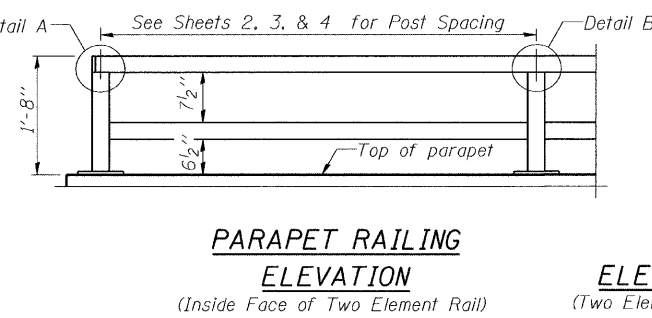
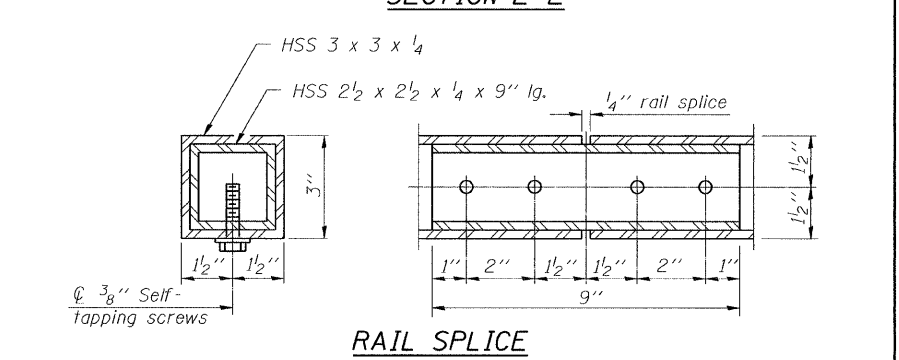
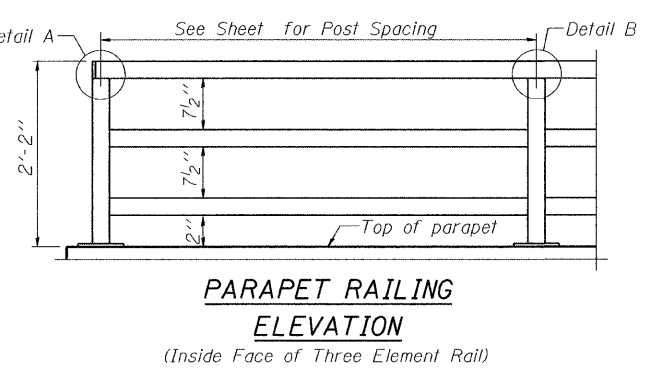
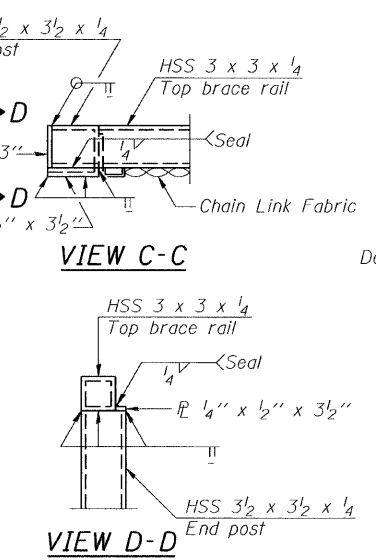
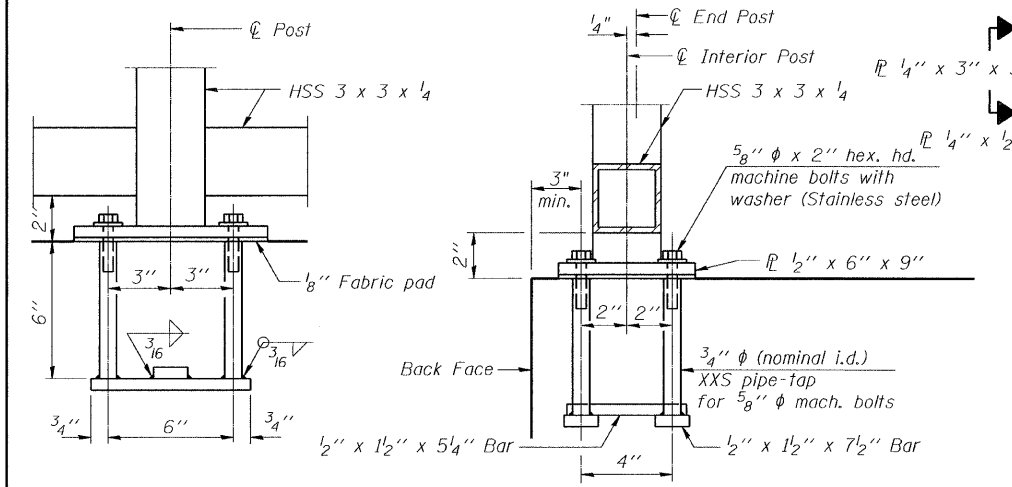
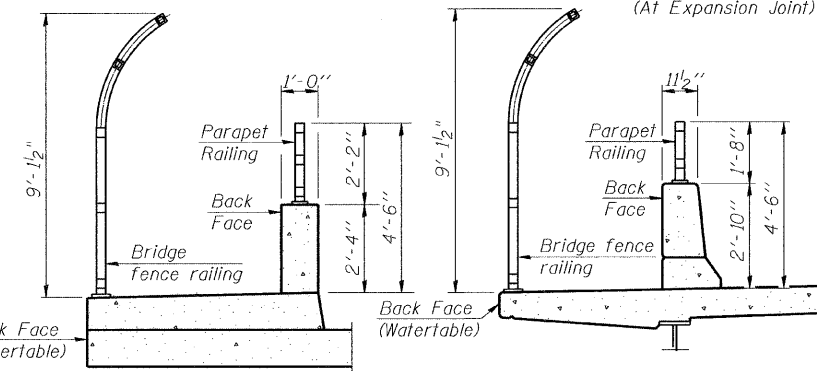
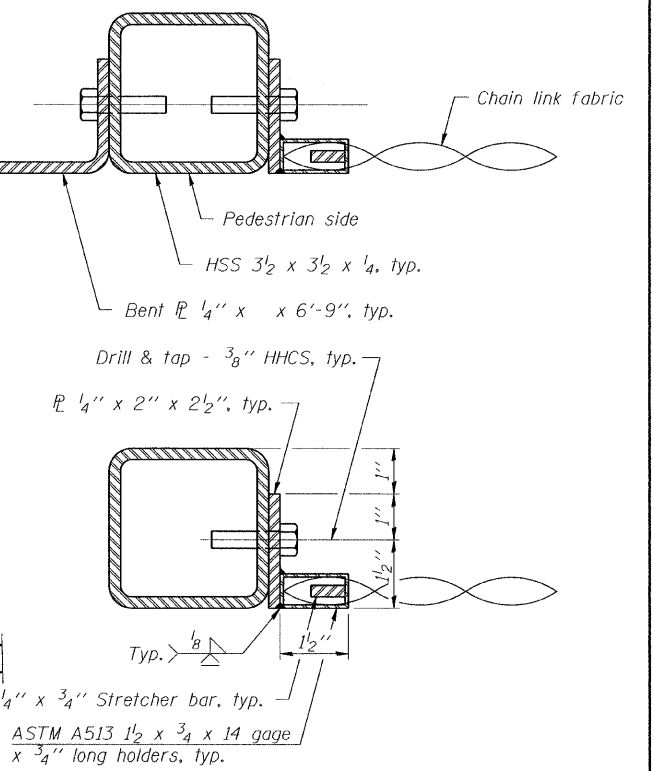
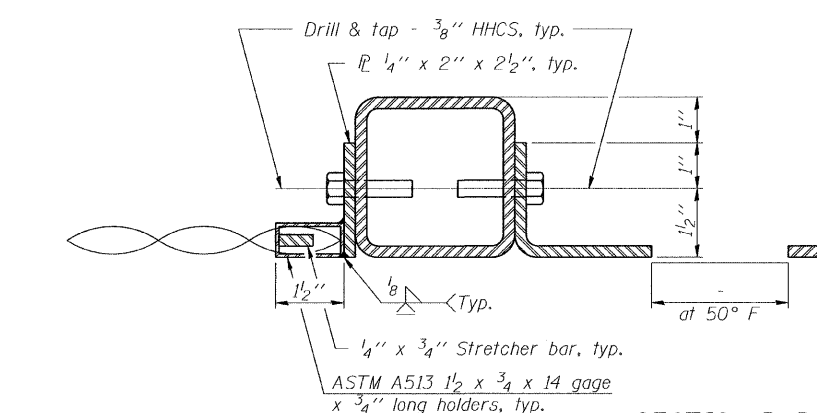
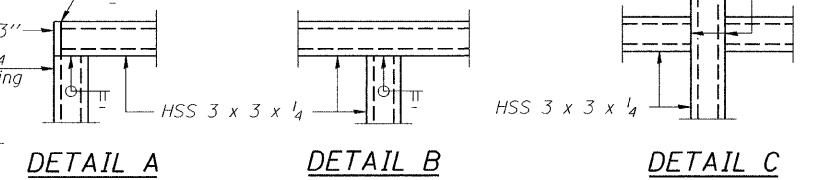
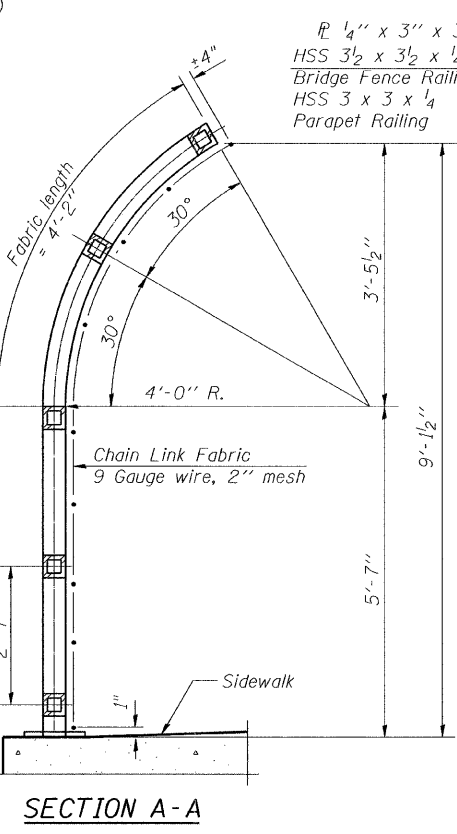
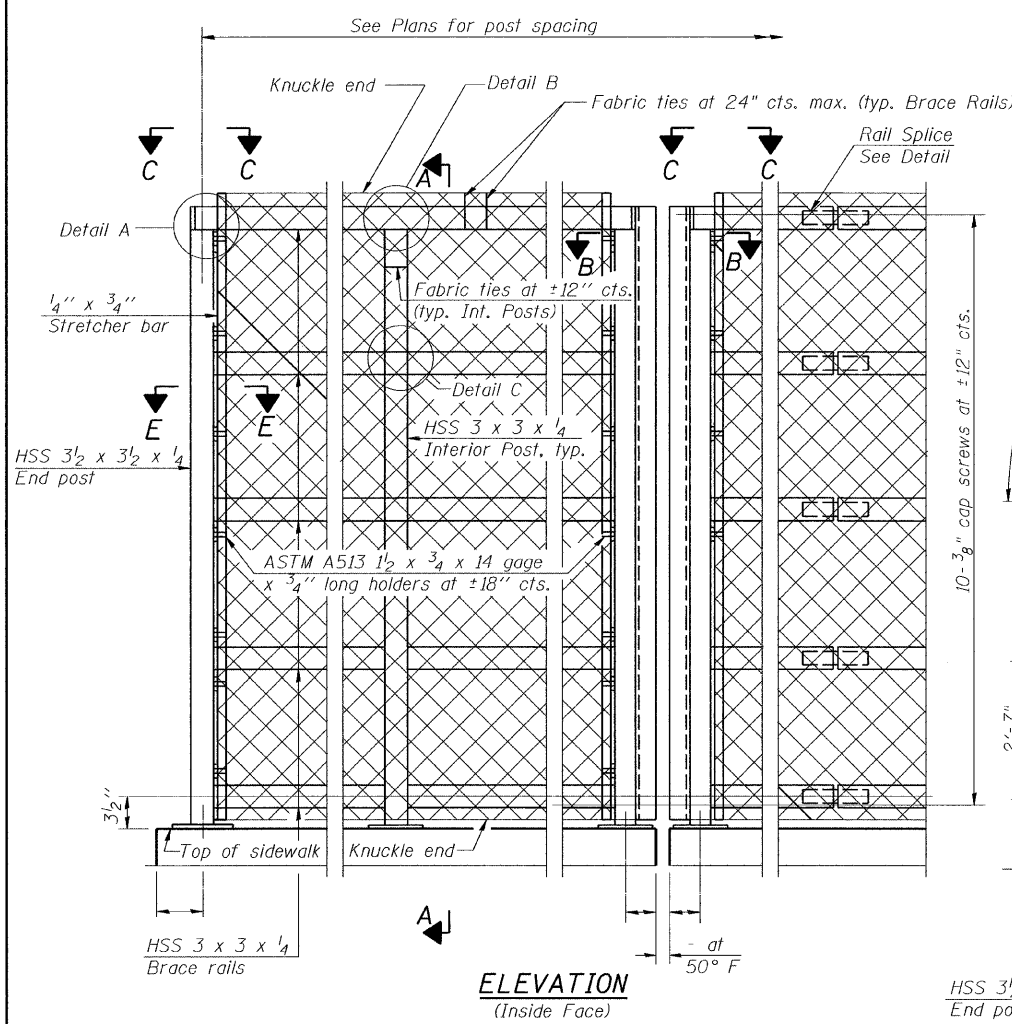


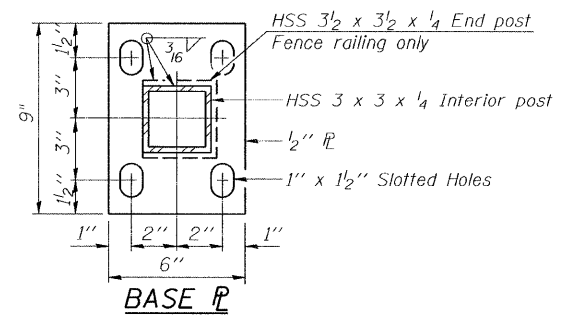
ROUTE NO.	SECTION	COUNTY	TOTAL SHEETS	SHEET NO.	SHEET NO. 6 OF 7 SHEETS
F.A.P. 866	*	LAKE	554	311	
FED. ROAD DIST. NO. 7		ILLINOIS	FED. AID PROJECT		
* (L-2(W,R);6,6A & 6 EXT) WRS-1					

All steel rail elements shall be galvanized according to Article 509.05 of the Standard Specifications.



DESIGNED	S.S.T.
CHECKED	J.A.Z.
DRAWN	E.B.
CHECKED	S.S.T.

R-33 11-1-06 (10'-0" Maximum Post Spacing)



BILL OF MATERIAL

Item	Unit	Quantity
Parapet Railing	Foot	277

RETAINING WALL NO. 1
PARAPET RAILING
ILLINOIS ROUTE 83
F.A.P. ROUTE 866
LAKE COUNTY
Sta. 238+70 to Sta. 241+50
DATE: 4/22/09
GRAEF, ANHALT, SCHLOEMER & ASSOCIATES INC
CHICAGO ILLINOIS