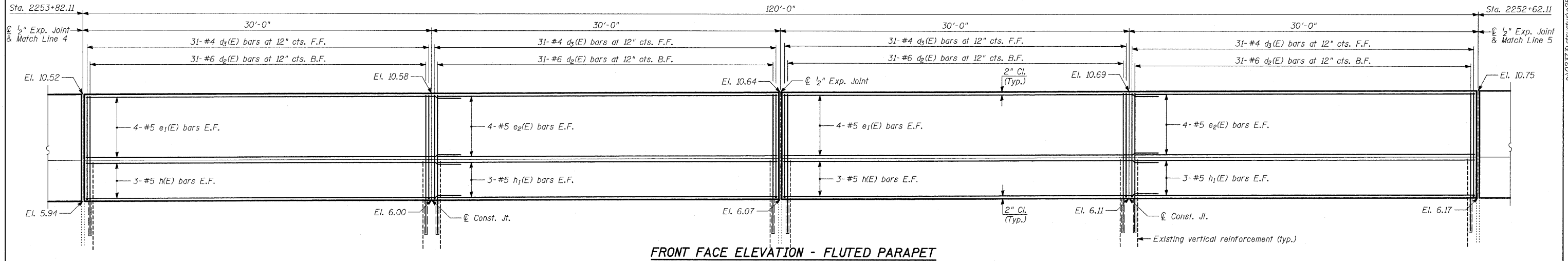
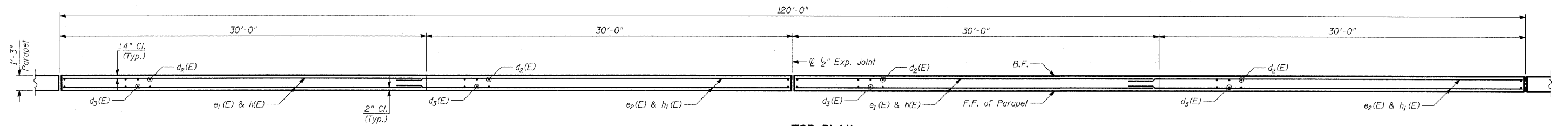


F.A.I. RTE.	SECTION	COUNTY	TOTAL SHEETS	SHEET NO.
94 (1516.1&1717) I-8		COOK	40	27
STA. 2248+65.17	TO STA. 2258+61.09			
FED. ROAD DIST. NO.	ILLINOIS	FED. AID PROJECT		

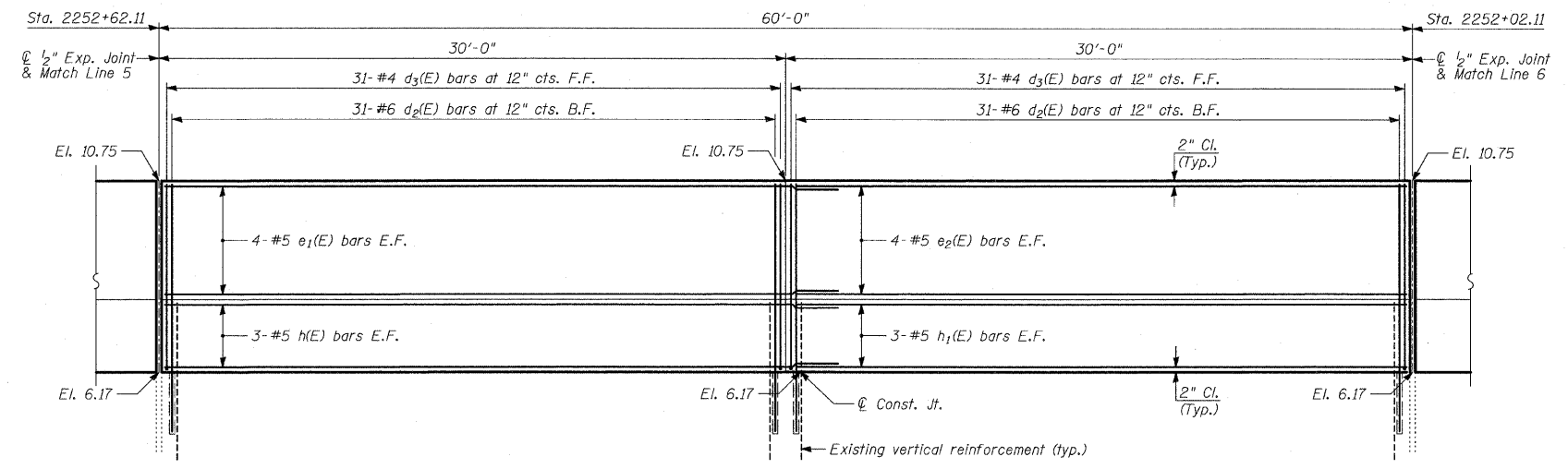
62972



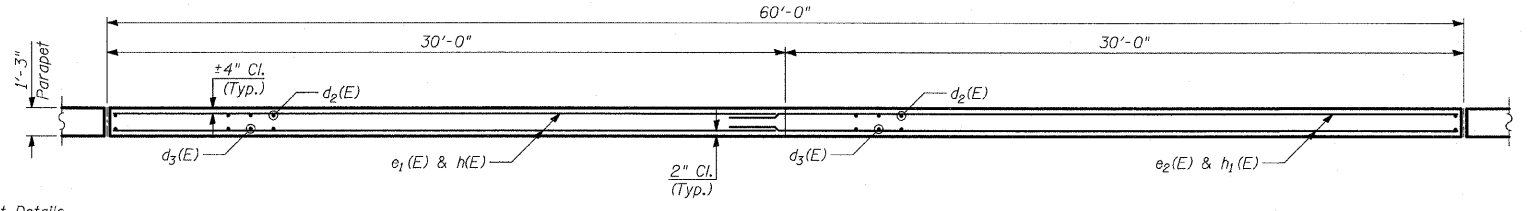
FRONT FACE ELEVATION - FLUTED PARAPET



TOP PLAN



FRONT FACE ELEVATION - FLUTED PARAPET



TOP PLAN

LAP SPLICES

Bar	Lap
#4	1'-8"
#5	2'-2"
#6	2'-7"

- NOTES:**
1. B.F. - denotes Back Face.
  2. E.F. - denotes Each Face.
  3. F.F. - denotes Front Face.
  4. Work this sheet with Sheets 25-28.
  5. For Construction and Expansion Joint Details, see "Fluted Knee Wall Standard Details".
  6. For Bill of Material and General Notes, see Sheet 28.

TYLIN INTERNATIONAL

REVISIONS	
NAME	DATE

ILLINOIS DEPARTMENT OF TRANSPORTATION  
 F.A.I. 94 (DAN RYAN EXPRESSWAY)  
 N. OF 89TH ST. TO S. OF 87TH ST  
 PARAPET RECONSTRUCTION  
 PLAN AND ELEVATION  
 STA. 2253+82.11 TO STA. 2252+02.11  
 S.N. DESIGNED BY: MI, TB  
 SCALE: N.T.S. DRAWN BY: TB  
 DATE: OCTOBER 17, 2008 CHECKED BY: MI

10/17/2008 11:34:08 AM