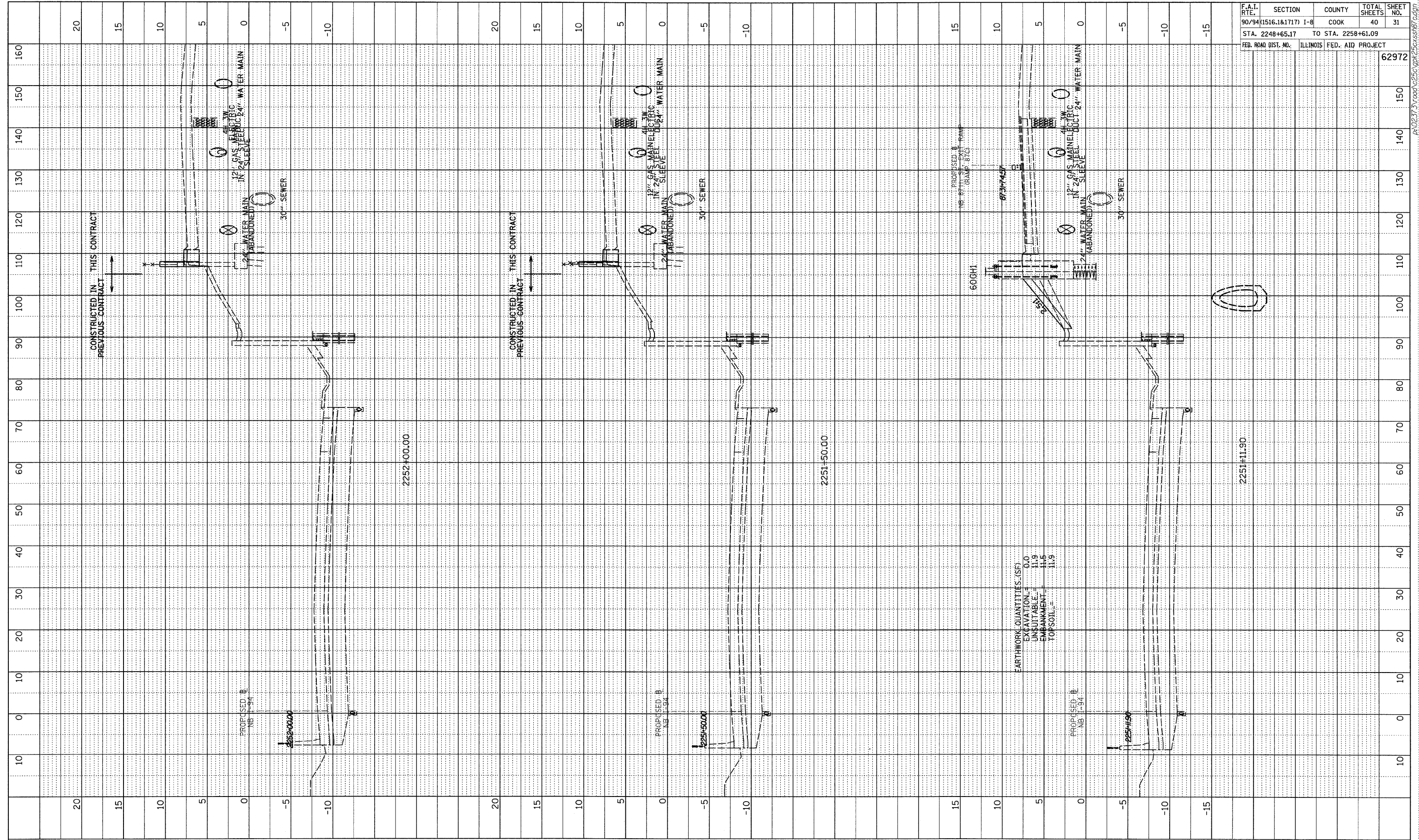
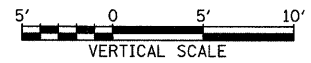
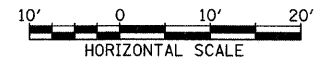


PROFILE	SURVEYED	BY	DATE
NOTE BOOK	CHECKED		
NO.	S.M. NOTED		
	STRUCTURE NOTATIONS CHRD		



F.A.I. RTE.	SECTION	COUNTY	TOTAL SHEETS	SHEET NO.
90/94 (1516.1&1717)	I-8	COOK	40	31
STA. 2248+65.17	TO STA. 2258+61.09			
FED. ROAD DIST. NO.	ILLINOIS FED. AID PROJECT			
				62972

TYLIN INTERNATIONAL



NB I-94 (DAN RYAN EXPRESSWAY)
STA. 2251+12 TO STA. 2252+00

PA02373.yroad\c255\proj\255\sheet31.dgn