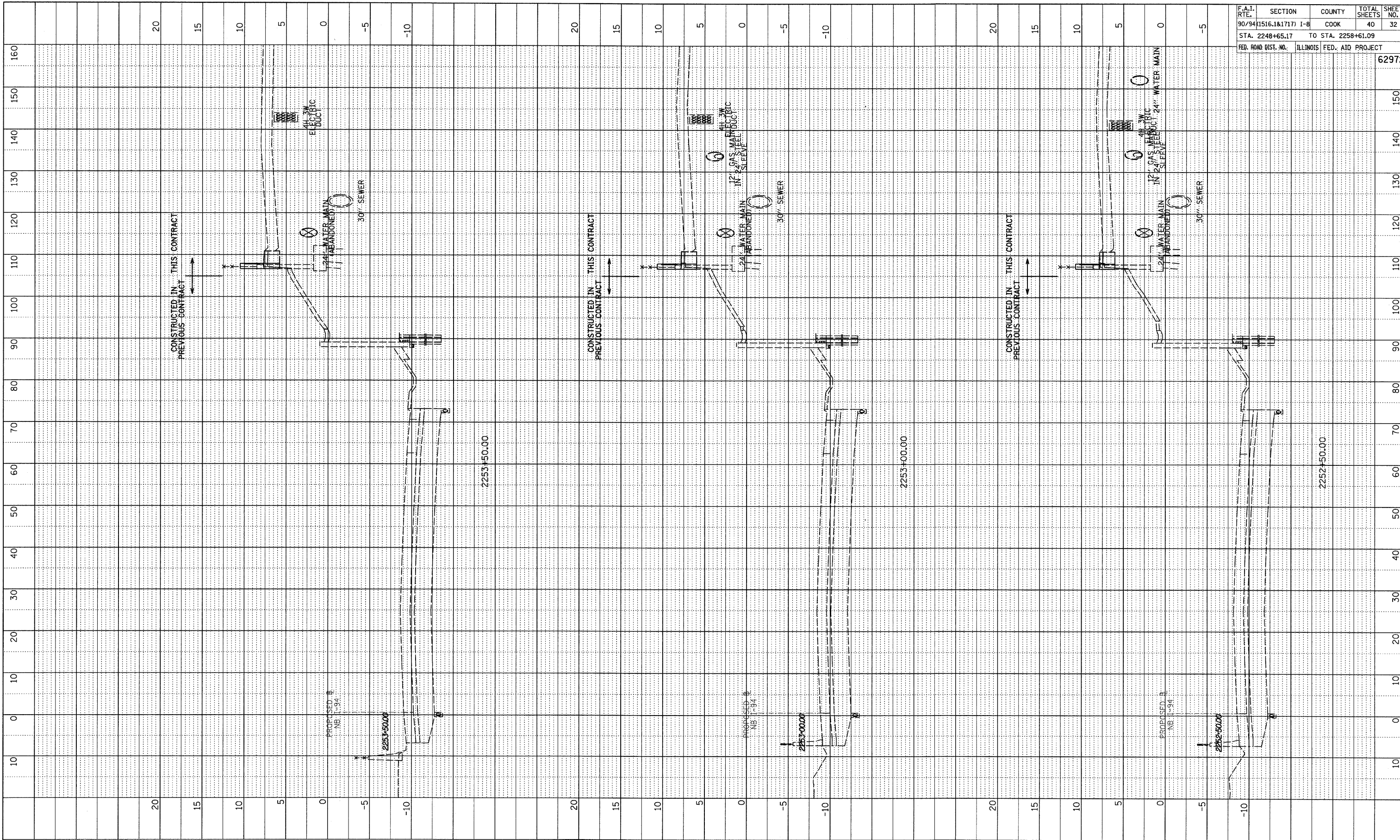
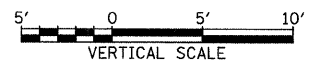
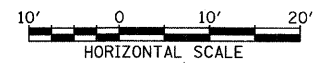


PROFILE SURVEYED	BY	DATE
NOTE BOOK		
STRUCTURE NOTATIONS		



F.A.I. RTE.	SECTION	COUNTY	TOTAL SHEETS	SHEET NO.
90/94 (1516.1&1717) I-B		COOK	40	32
STA. 2248+65.17	TO STA. 2258+61.09			
FED. ROAD DIST. NO.	ILLINOIS FED. AID PROJECT			
				62972

TYLIN INTERNATIONAL



NB I-94 (DAN RYAN EXPRESSWAY)  
STA. 2252+50 TO STA. 2253+50

P:\023731\road\25\cgm\25cgs187.cgm