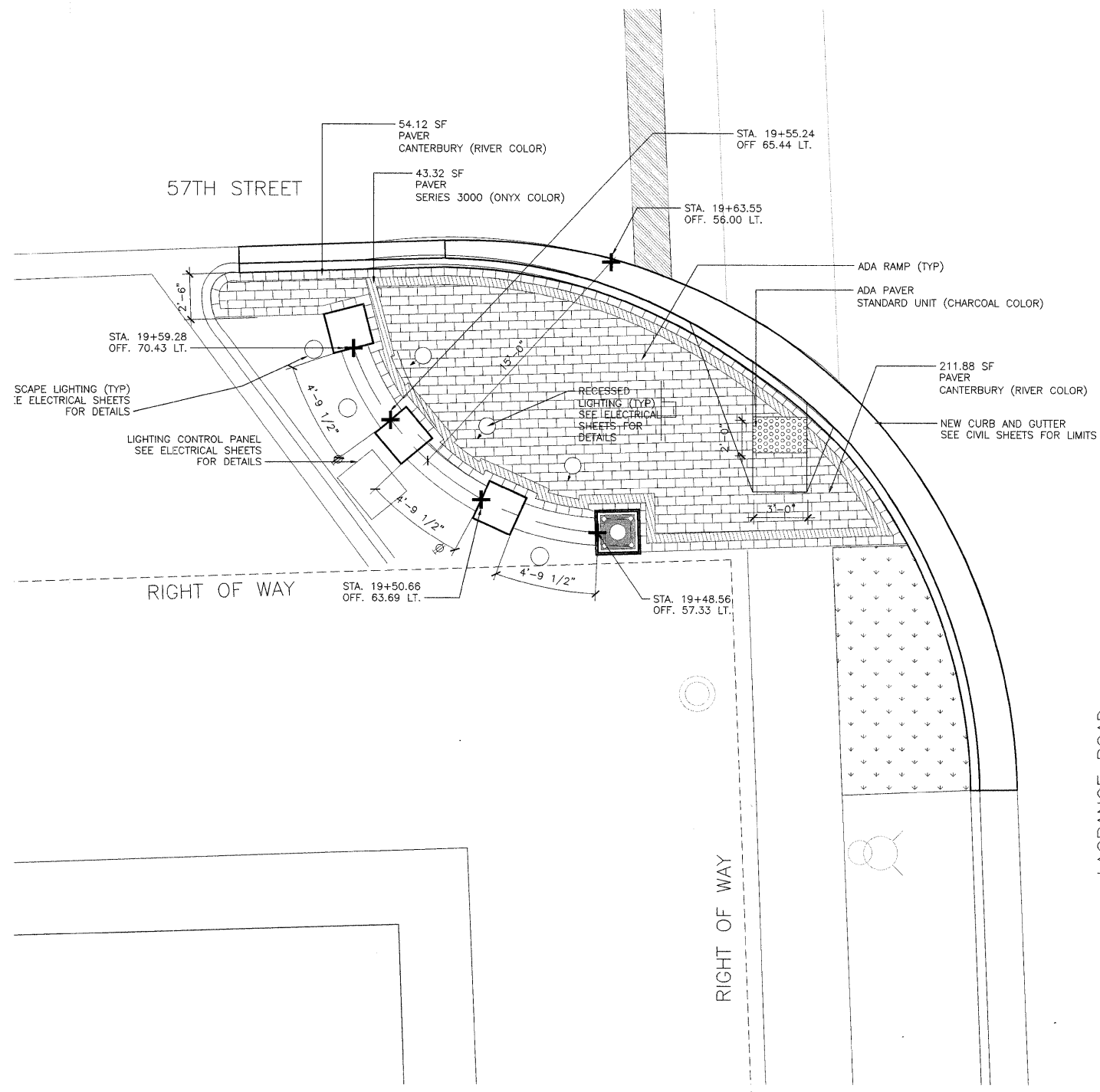


C:\WorkSpace\MURPHY\JN-FS-0044-D-Trans\_07-22\2002\20433-001\Arch\CAD\01\_Design\1A\_Teng\Sheet\57th\1A001.dwg (XREF) C:\WorkSpace\MURPHY\JN-FS-0044-D-Trans\_07-22\2002\20433-001\Arch\CAD\01\_Design\1A\_Teng\Sheet\57th\1A001.dwg (XREF) C:\WorkSpace\MURPHY\JN-FS-0044-D-Trans\_07-22\2002\20433-001\Arch\CAD\01\_Design\1A\_Teng\Sheet\57th\1A001.dwg (XREF) C:\WorkSpace\MURPHY\JN-FS-0044-D-Trans\_07-22\2002\20433-001\Arch\CAD\01\_Design\1A\_Teng\Sheet\57th\1A001.dwg (XREF) C:\WorkSpace\MURPHY\JN-FS-0044-D-Trans\_07-22\2002\20433-001\Arch\CAD\01\_Design\1A\_Teng\Sheet\57th\1A001.dwg (XREF) C:\WorkSpace\MURPHY\JN-FS-0044-D-Trans\_07-22\2002\20433-001\Arch\CAD\01\_Design\1A\_Teng\Sheet\57th\1A001.dwg (XREF)

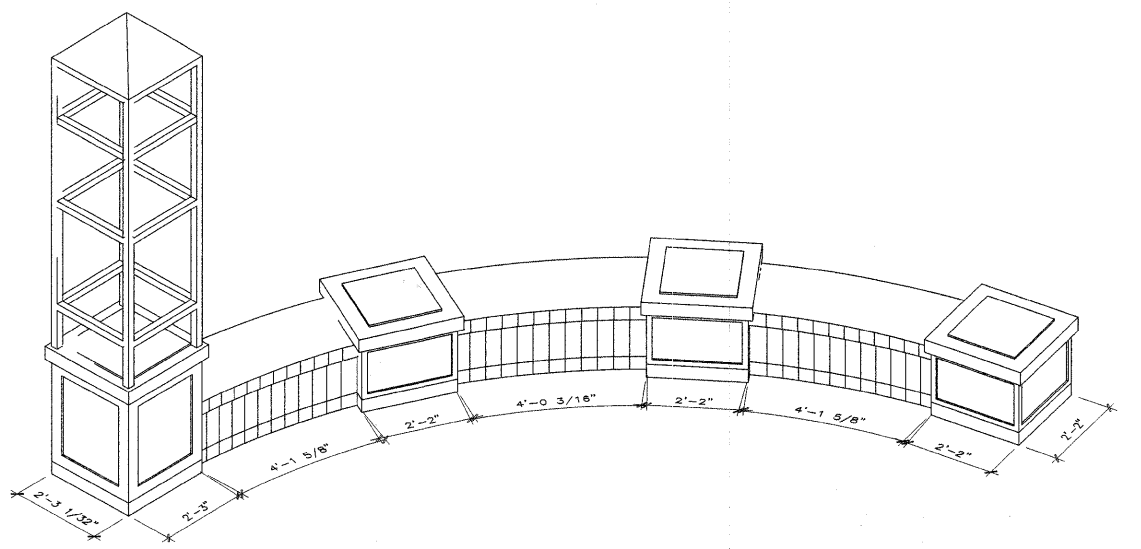


### 1 57TH STREET INTERSECTION - SOUTHWEST QUADRANT - PLAZA ENLARGEMENT

SCALE 1/4"=1'-0"



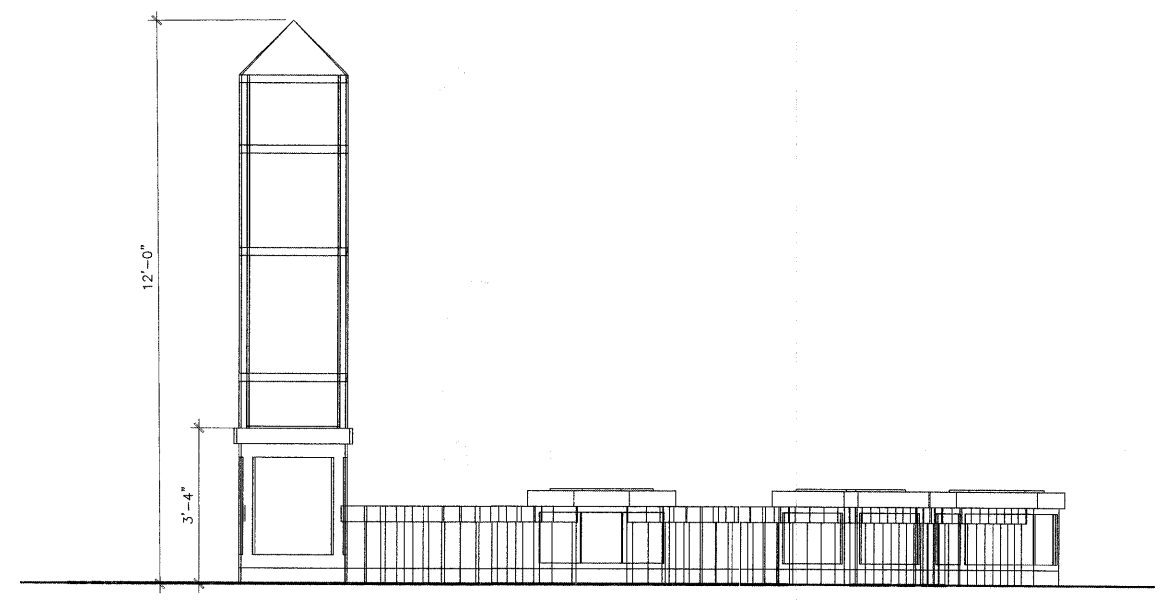
NOTE: OUTSIDE COURSE OF PAVERS IN PLAZA TO BE SOLDIER COURSE RECTANGULAR PAVERS AS CALLED OUT IN LANDSCAPE DETAILS SHEET. FINAL LAYOUT TO BE DETERMINED IN FIELD BY CONTRACTOR AND APPROVED BY LANDSCAPE ARCHITECT.



### 2 57TH STREET INTERSECTION - SOUTHWEST QUADRANT - SEATWALL ISOMETRIC

SCALE 1/2"=1'-0"

NOTE: FINAL SEATWALL/PILLAR/PYLON/UNIT PAVER LOCATIONS AND DIMENSIONS TO BE DETERMINED IN FIELD BY CONTRACTOR AND APPROVED BY LANDSCAPE ARCHITECT.



### 3 57TH STREET INTERSECTION - SOUTHWEST QUADRANT - SEATWALL ELEVATION

SCALE 1/2"=1'-0"

FILE NAME =	USER NAME = \$USER\$	DESIGNED —	REVISED —
\$FILES\$		DRAWN — ICJ	REVISED —
	PLOT SCALE = \$SCALE\$	CHECKED — BS	REVISED —
	PLOT DATE = 8/22/08	DATE = 4/30/09	REVISED —

**STATE OF ILLINOIS  
DEPARTMENT OF TRANSPORTATION**

**57TH STREET INTERSECTION  
SOUTHWEST QUADRANT-HARDSCAPE DETAILS**

F.A. RTE.	SECTION	COUNTY	TOTAL SHEETS	SHEET NO.
	07-00035-00-LS	COOK	42	15
SCALE:		STA.	TO STA.	FED. ROAD DIST. NO. 1 ILLINOIS FED. AID PROJECT
CONTRACT NO. 63059				

**TENG**  
TENG & ASSOCIATES, INC.  
ENGINEERS/ARCHITECTS/PLANNERS  
205 N. MICHIGAN AVE. CHICAGO, IL 60601  
TELEPHONE: 312/616-0000