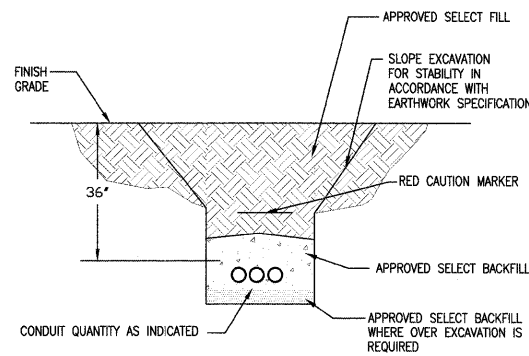


**NOTES:**

1. ALL COMPONENTS ON A 1/2" THICK BENELEX BOARD.
2. QUANTITY AND SIZE OF CIRCUIT BREAKERS AND TRANSFORMERS SHALL BE PER LCP SCHEDULE.
3. PROVIDE SUITABLE QUANTITY OF LOAD TERMINAL CONNECTIONS FOR ALL DEVICES.
4. ALL CONDUITS TO ENTER AT BOTTOM OF PANEL.
5. CONTROL PANEL TO BE 25"x25"x8"D.

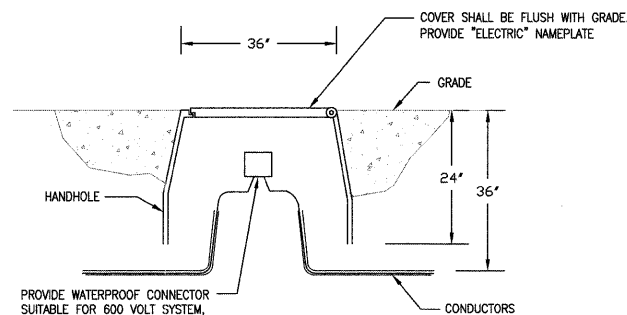
**1 LIGHTING CONTROL PANEL DETAIL**  
NTS



**NOTES:**

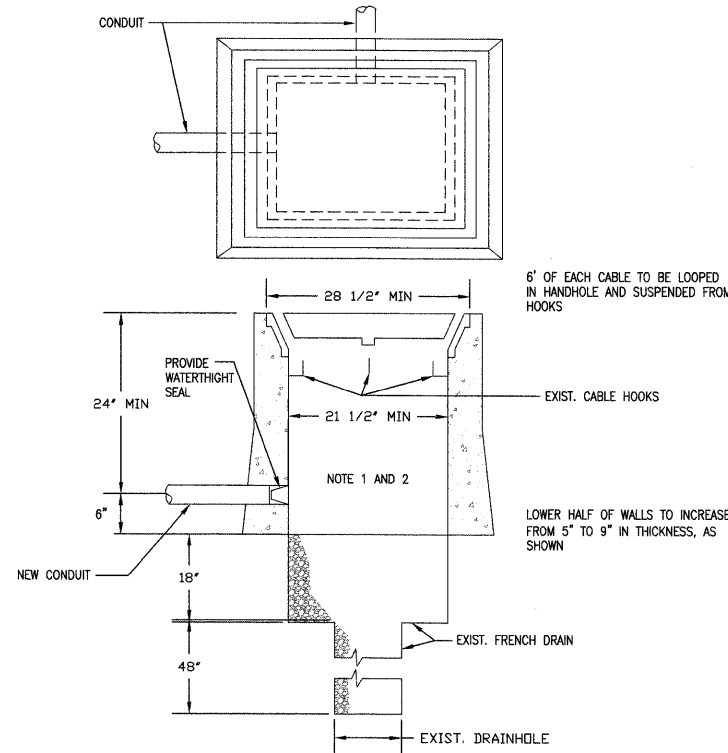
1. TRENCH WIDTH SHALL BE DETERMINED BY NUMBER OF CABLES AND SIDE WALL COMPACTION.
2. COORDINATE WITH EARTHWORK SPECIFICATION.

**2 TYPICAL TRENCH SECTION**  
NTS



PROVIDE WATERPROOF CONNECTOR SUITABLE FOR 600 VOLT SYSTEM. COPPER WIRES. CONNECTOR SHALL BE RATED 105° W/ SILICON SEALANT RATED FROM -45 TO 400 DEGREES F. KING INNOVATION - DRYCONN CONNECTORS.

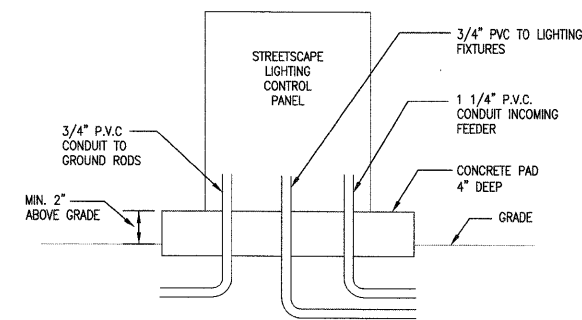
**3 NEW HANDHOLE DETAIL**  
NTS



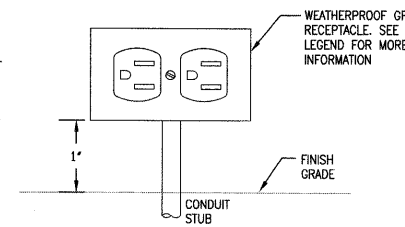
**NOTES:**

1. PROVIDE 18" OF SLACK CABLE AT HANDHOLE.
2. PROVIDE NEW CORES IN EXISTING MANHOLE FOR NEW CONDUITS.

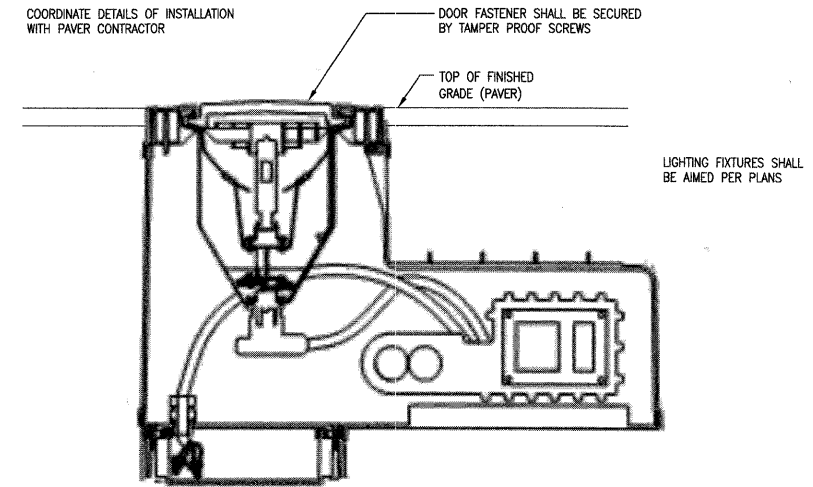
**4 CONNECTION TO EXISTING HANDHOLE**  
NTS



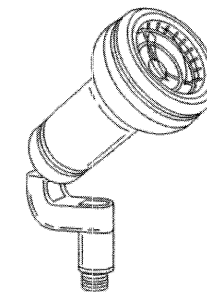
**5 ELECTRICAL CABINET (EXTERIOR) PAD MOUNTED**  
NTS



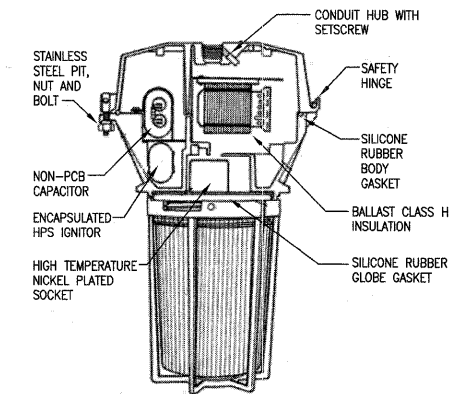
**6 GFI RECEPTACLE**  
NTS



**7 LIGHTING FIXTURE BELOW GRADE (M1) (FLUSH MOUNTED)**  
NTS



**8 M2 LIGHTING FIXTURE**  
NTS



**9 FIXTURE M3 DETAIL**  
NTS

**TENG**

TENG & ASSOCIATES, INC.  
ENGINEERS/ARCHITECTS/PLANNERS  
205 N. MICHIGAN AVE., CHICAGO, IL 60601  
TELEPHONE: 312/616-0000

FILE NAME = \$FILEL\$	USER NAME = \$USER\$	DESIGNED --	REVISED --	<b>STATE OF ILLINOIS DEPARTMENT OF TRANSPORTATION</b>	<b>ELECTRICAL DETAILS</b>		F.A. RTE_	SECTION	COUNTY	TOTAL SHEETS	SHEET NO.	
	PLOT SCALE = \$SCALE\$	DRAWN -- IC	REVISED --		SCALE: AS NOTED	STA.	TO STA.	07-00035-00-LS	COOK	42	38	
	PLOT DATE = 8/22/08	CHECKED -- PR	REVISED --									
		DATE -- 4/30/09	REVISED --					CONTRACT NO. 63059				
							FED. ROAD DIST. NO. 1		ILLINOIS			FED. AID PROJECT