

STATE OF ILLINOIS  
DEPARTMENT OF TRANSPORTATION  
KANE COUNTY DIVISION OF TRANSPORTATION

**PROPOSED  
HIGHWAY PLANS  
VOLUME 1**

F.A.P 361 ROUTE IL-25 / STEARNS ROAD  
DUNHAM ROAD

SECTION NO. 06-00214-15-BR  
AR-TE-CMM-HPP-1527 (012)  
JOB NO. C-91-246-06  
KANE / DUPAGE COUNTY

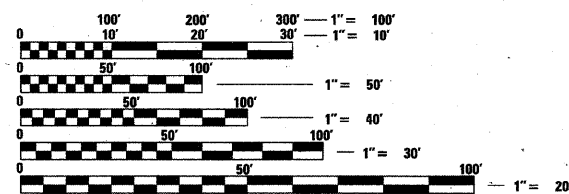
F.A.P. RTE.	SECTION	COUNTY	TOTAL SHEETS	SHEET NO.
361	06-00214-15-BR	KANE/DUPAGE	55	1
FED. ROAD DIST. NO.	ILLINOIS	CONTRACT NO. 63074		

FOR INDEX OF SHEETS, SEE SHEET NO. 2  
FOR LIST OF STATE STANDARDS, SEE SHEET NO. 3

DESIGN DESIGNATION AND TRAFFIC DATA

2015 ADT VEHICLES	
IL-25	= 29,000
STEARNS RD	= 26,075
DUNHAM RD	= 29,500
GILBERT RD	= 8,150
DESIGN SPEED	= 45 MPH
FUNCTION CLASSIFICATION:	- OTHER PRINCIPAL ARTERIAL (OPA)

THIS PROJECT IS LOCATED IN  
KANE AND DUPAGE COUNTIES,  
AND VILLAGE OF BARTLETT

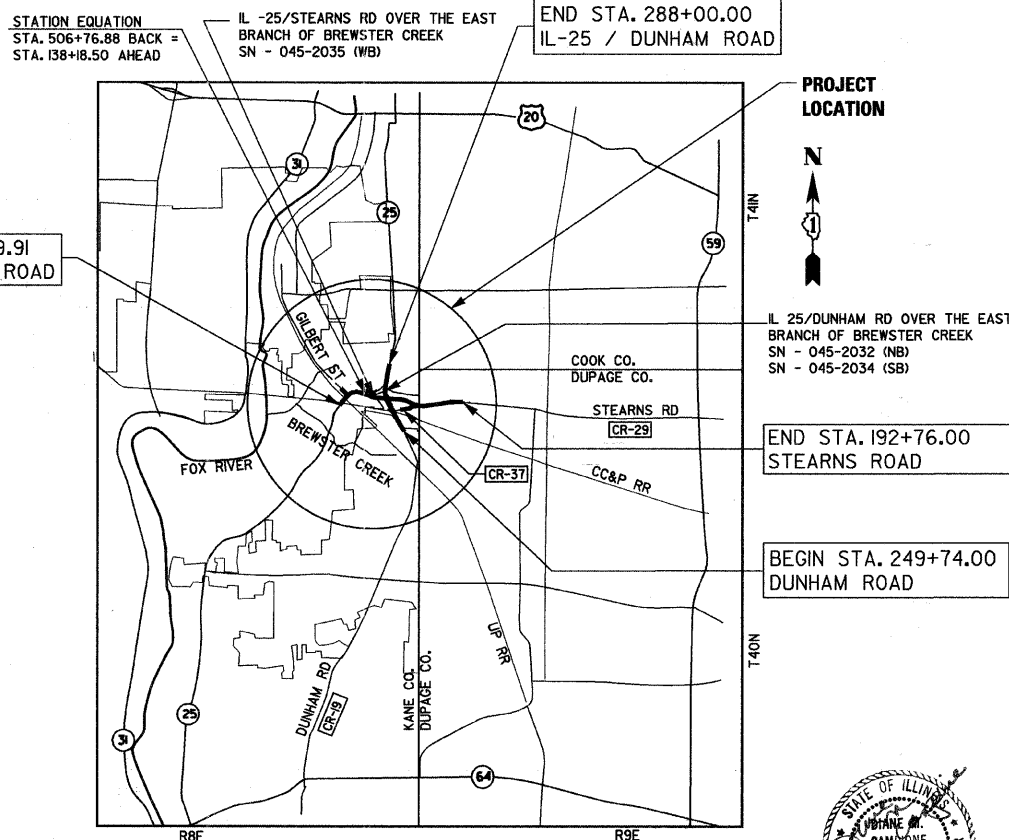


FULL SIZE PLANS HAVE BEEN PREPARED USING STANDARD ENGINEERING SCALES. REDUCED SIZED PLANS WILL NOT CONFORM TO STANDARD SCALES. IN MAKING MEASUREMENTS ON REDUCED PLANS, THE ABOVE SCALES MAY BE USED.

J.U.L.I.E.  
JOINT UTILITY LOCATION INFORMATION FOR EXCAVATION  
1-800-892-0123  
OR 811

PROJECT MANAGER CHARLES RIDDLE, PE

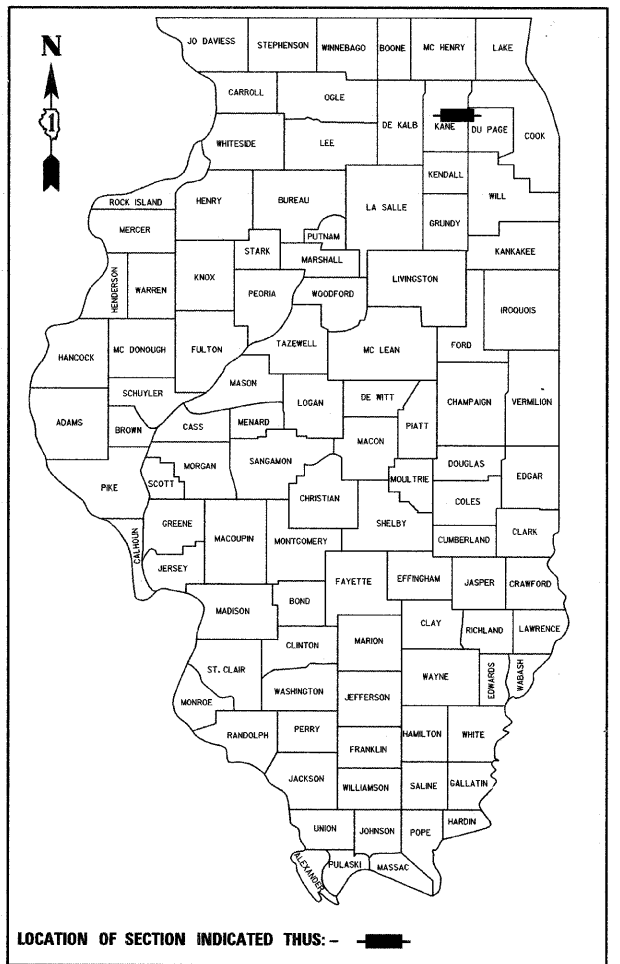
CONTRACT NO. 63074



LOCATION MAP

SCALE: NTS

NET LENGTH OF IMPROVEMENT = 11,693 LINEAR FEET = 2.215 MILES  
GROSS LENGTH OF IMPROVEMENT = 11,693 LINEAR FEET = 2.215 MILES



MICHAEL P. MAGNUSO  
062-046513  
REGISTERED PROFESSIONAL ENGINEER  
OF ILLINOIS  
EXPIRES: 11-30-09  
DATE: 3-31-09  
SHEETS 253-270

GEOFFREY H. THIES  
062-060445  
LICENSED PROFESSIONAL ENGINEER  
OF ILLINOIS  
EXPIRATION DATE 11-30-09  
DATE 3-31-09  
SHEETS 271-274

ANTHONY J. RICE  
82-090908  
LICENSED PROFESSIONAL ENGINEER  
OF ILLINOIS  
EXPIRATION DATE 11-30-09  
DATE 3/31/2009  
SHEETS 121-176

JOANN M. MAJORS  
82-048874  
LICENSED PROFESSIONAL ENGINEER  
OF ILLINOIS  
EXPIRATION DATE 11-30-09  
DATE 3/31/2009  
SHEETS 15-35; 86-120

STATE OF ILLINOIS  
DIANE M. CAMPONE  
81-4827  
LICENSED STRUCTURAL ENGINEER  
CHICAGO, IL  
EXPIRATION DATE: 11-30-10  
DATE: 3/31/2009  
SHEETS 288-375

DIANE M. CAMPONE  
062-045408  
LICENSED PROFESSIONAL ENGINEER  
OF ILLINOIS  
EXPIRATION DATE 11-30-09  
DATE 3/31/2009  
SHEETS 1-14; 36-85  
220-252

KANE COUNTY  
DIVISION OF TRANSPORTATION  
APPROVED MARCH 30 20 09  
*[Signature]*  
COUNTY ENGINEER

DUPAGE COUNTY  
DIVISION OF TRANSPORTATION  
APPROVED MARCH 30 20 09  
*[Signature]*  
COUNTY ENGINEER

PASSED APRIL 6 20 09  
*[Signature]*  
DISTRICT ENGINEER OF LOCAL ROADS AND STREETS  
RELEASED FOR BID BASED ON LIMITED REVIEW APRIL 7, 2009  
*[Signature]*  
DEPUTY DIRECTOR OF HIGHWAYS, REGION 1 ENGINEER

PRINTED BY THE AUTHORITY  
OF THE STATE OF ILLINOIS

FEDERAL ENGINEER CHARLES RIDDLE, PE