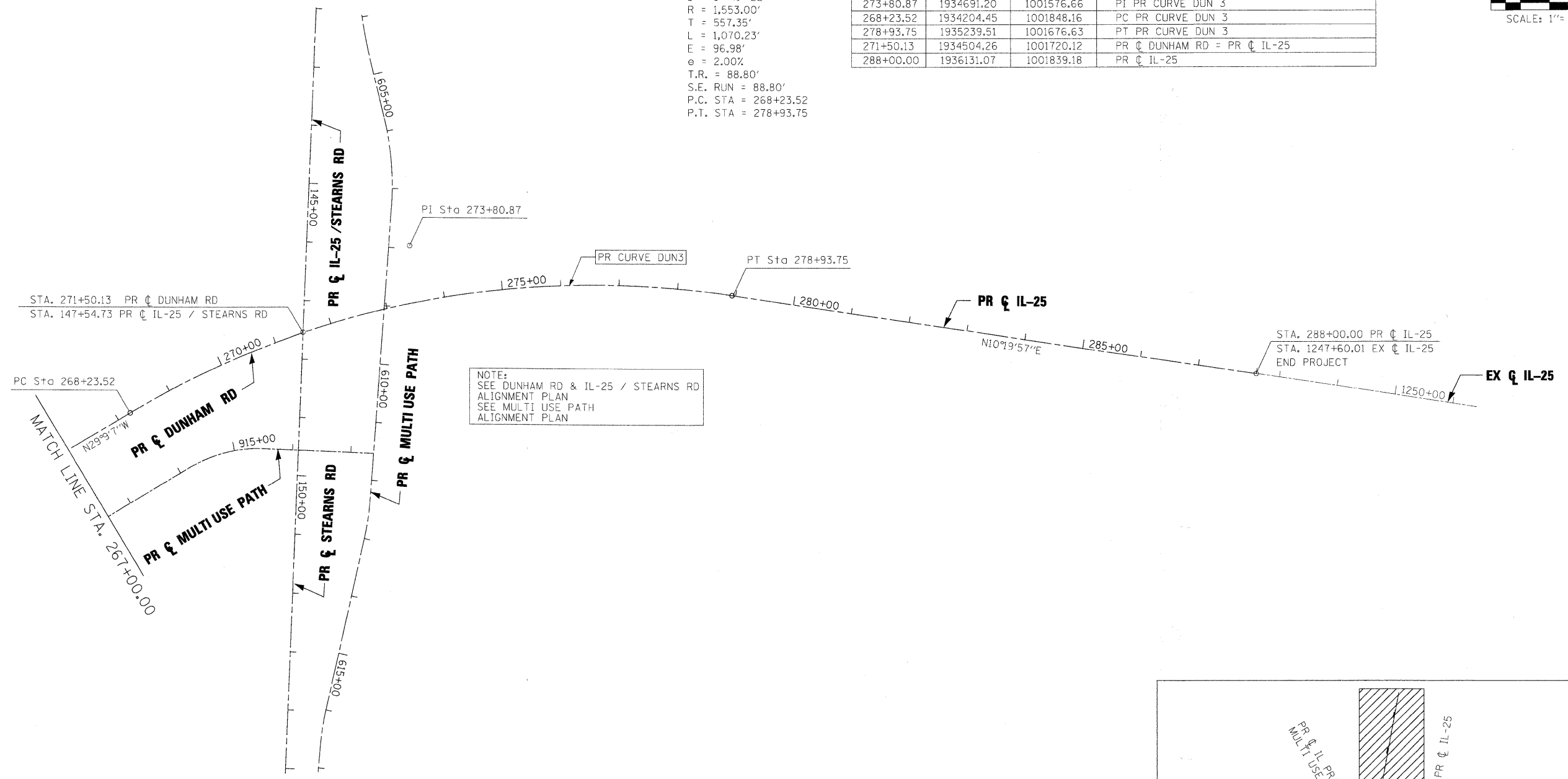
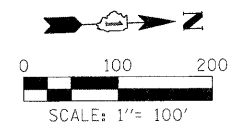
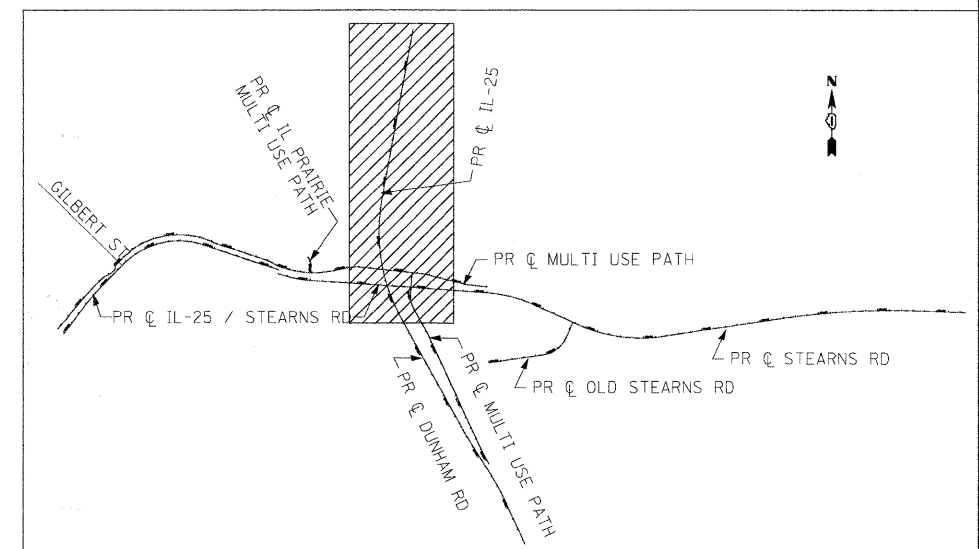


**PR CURVE DUN3**  
 PI STA. = 273+80.87  
 $\Delta = 39^\circ 29' 05''$  (RT)  
 $D = 3^\circ 41' 22''$   
 $R = 1,553.00'$   
 $T = 557.35'$   
 $L = 1,070.23'$   
 $E = 96.98'$   
 $e = 2.00\%$   
 $T.R. = 88.80'$   
 $S.E. RUN = 88.80'$   
 $P.C. STA = 268+23.52$   
 $P.T. STA = 278+93.75$

COORDINATE DATA			
STATION	NORTHING	EASTING	REMARKS
147+54.73	1934504.26	1001720.12	PR $\odot$ IL-25/STEARNS RD = PR $\odot$ STEARNS RD
273+80.87	1934691.20	1001576.66	PI PR CURVE DUN 3
268+23.52	1934204.45	1001848.16	PC PR CURVE DUN 3
278+93.75	1935239.51	1001676.63	PT PR CURVE DUN 3
271+50.13	1934504.26	1001720.12	PR $\odot$ DUNHAM RD = PR $\odot$ IL-25
288+00.00	1936131.07	1001839.18	PR $\odot$ IL-25



NOTE:  
 SEE DUNHAM RD & IL-25 / STEARNS RD  
 ALIGNMENT PLAN  
 SEE MULTI USE PATH  
 ALIGNMENT PLAN



**KEY PLAN**

x:\39202\3944\engineering\_documents\Roadway\Alignment\_and\_ties\prp\in-ABC-DUN-al-1-02.dgn

FILE NAME = #FILES#	USER NAME = #USER#	DESIGNED - JRM	REVISED -
		DRAWN - NVM	REVISED -
		CHECKED - JNR	REVISED -
		DATE - 3/31/09	REVISED -

**KANE COUNTY  
 DIVISION OF TRANSPORTATION**

**ALIGNMENT PLAN  
 DUNHAM ROAD /IL 25**

SCALE:	SHEET NO. OF SHEETS	STA. 267+00.00 TO STA. 288+00.00	F.A. RTE. 361	SECTION 06-00214-15-BR	COUNTY KANE/DUPAGE	TOTAL SHEETS 545	SHEET NO. 49
			FED. ROAD DIST. NO. [ILLINOIS] FED. AID PROJECT				
			CONTRACT NO. 63074				