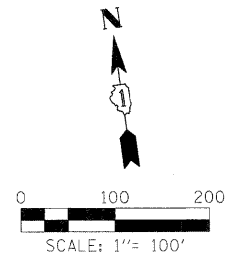
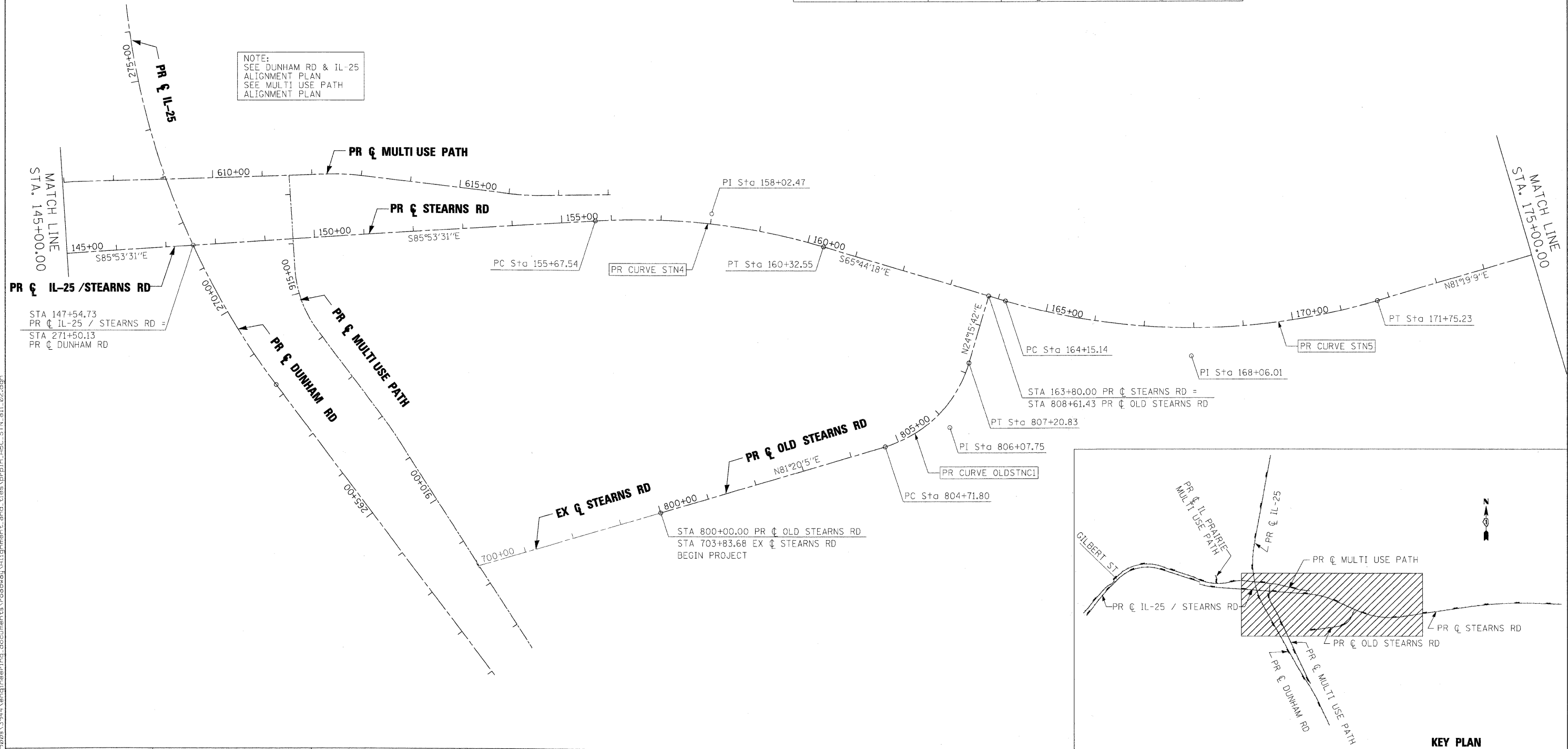


PR CURVE STN4	PR CURVE STN5	PR CURVE OLDSTNC1
PI STA. = 158+02.47	PI STA. = 168+06.01	PI STA. = 806+07.75
$\Delta = 20^\circ 09' 13''$ (RT)	$\Delta = 32^\circ 56' 33''$ (LT)	$\Delta = 57^\circ 04' 23''$ (LT)
D = 4° 20' 02"	D = 4° 20' 02"	D = 22° 55' 06"
R = 1,322.00'	R = 1,322.00'	R = 250.00'
T = 234.93'	T = 390.87'	T = 135.95'
L = 465.01'	L = 760.09'	L = 249.03'
E = 20.71'	E = 56.57'	E = 34.57'
e = 3.5%	e = 5.5%	e = 3.9%
T.R. = 66.6	T.R. = 84.0	T.R. = 35
S.E. RUN = 116.55	S.E. RUN = 231.0	S.E. RUN = 67
P.C. STA = 155+67.54	P.C. STA = 164+15.14	P.C. STA = 804+71.80
P.T. STA = 160+32.55	P.T. STA = 171+75.23	P.T. STA = 807+20.83

COORDINATE DATA			
STATION	NORTHING	EASTING	REMARKS
147+54.73	1934504.24	1001720.42	PR C IL-25/STEARNS RD = PR C STEARNS RD
158+02.47	1934429.21	1002765.16	PI PR CURVE STN4
155+67.54	1934446.03	1002530.83	PC PR CURVE STN4
160+32.55	1934332.67	1002979.34	PT PR CURVE STN4
168+06.61	1934014.85	1003684.49	PI PR CURVE STN5
164+15.14	1934175.46	1003328.14	PC PR CURVE STN5
171+75.23	1934073.85	1004070.89	PT PR CURVE STN5
163+80.00	1934189.90	1003296.11	PR C STEARNS RD = PR C OLD STEARNS RD
271+50.13	1934504.24	1001720.42	PR C DUNHAM RD = PR C IL-25
800+00.00	1933846.22	1002581.66	POT PR C OLD STEARNS RD
806+07.75	1933937.78	1003182.47	PI PR CURVE OLDSTNC1
804+71.80	1933917.30	1003048.08	PC PR CURVE OLDSTNC1
807+20.83	1934061.72	1003238.33	PT PR CURVE OLDSTNC1
808+61.43	1934189.90	1003296.11	PR C OLD STEARNS RD = PR C STEARNS RD



NOTE:
SEE DUNHAM RD & IL-25
ALIGNMENT PLAN
SEE MULTI USE PATH
ALIGNMENT PLAN



X:\39029\3944\engineering_documents\roads\alignments\ABC.STN_e1_02.dgn

FILE NAME =	USER NAME = #USER#	DESIGNED - JRM	REVISED -	KANE COUNTY DIVISION OF TRANSPORTATION	ALIGNMENT PLAN IL 25 /STEARNS ROAD & OLD STEARNS ROAD	F.A. RTE.	SECTION	COUNTY	TOTAL SHEETS	SHEET NO.
#FILES#	DRAWN - NMM	REVISED -	361			06-00214-15-BR	KANE/DUPAGE	545	51	
PLOT SCALE = 100.0000' / IN.	CHECKED - JNR	REVISED -	CONTRACT NO. 63074							
PLOT DATE = 3/30/2009	DATE - 3/31/09	REVISED -	FED. ROAD DIST. NO. ILLINOIS FED. AID PROJECT							
		SCALE:		SHEET NO. OF SHEETS		STA. 145+00.00 TO STA. 175+00.00				