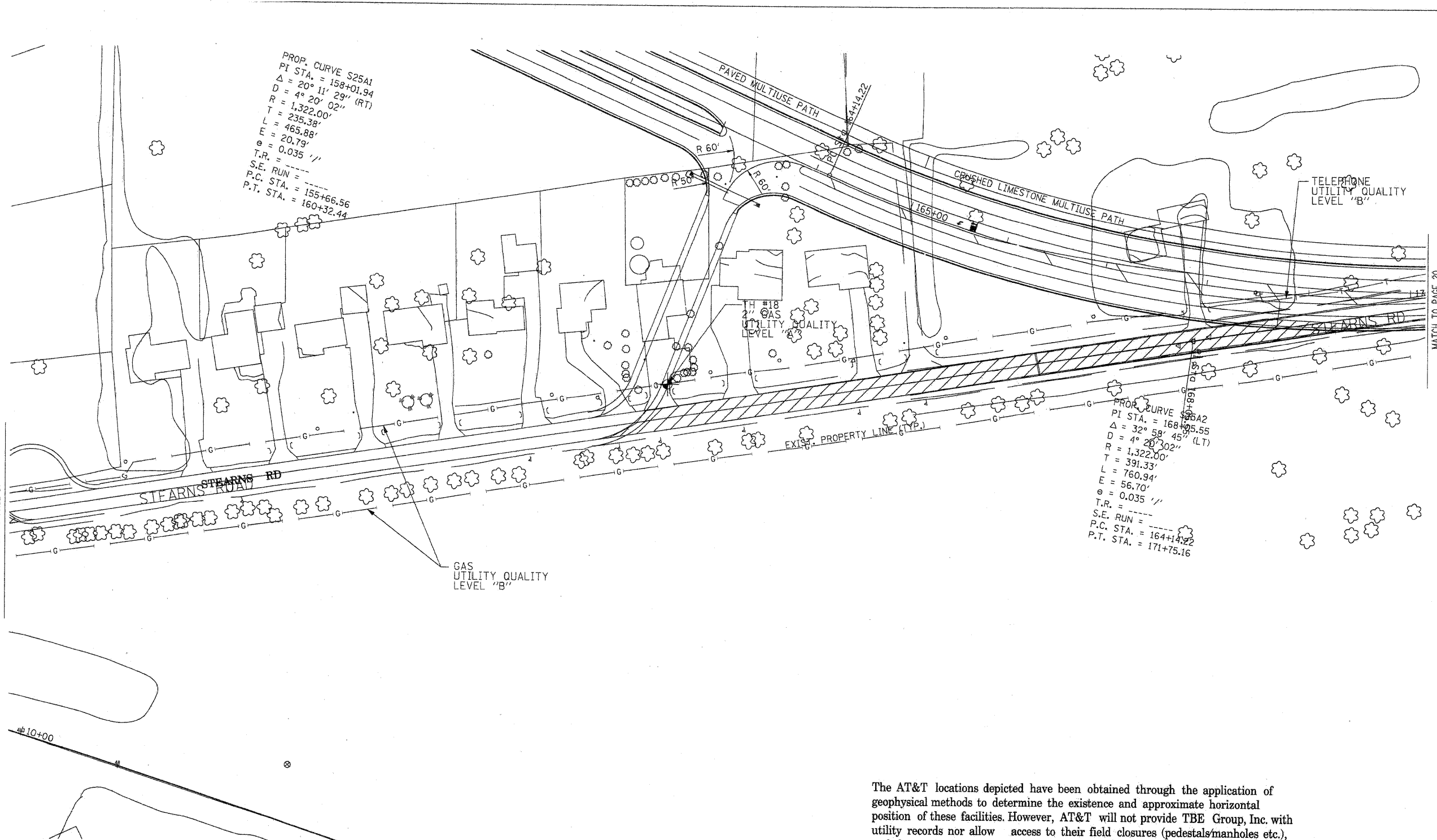



MATCH TO PAGE 17



MATCH TO PAGE 20

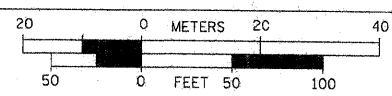
The AT&T locations depicted have been obtained through the application of geophysical methods to determine the existence and approximate horizontal position of these facilities. However, AT&T will not provide TBE Group, Inc. with utility records nor allow access to their field closures (pedestals/manholes etc.), to help verify the locations of their existing underground facilities. Therefore, TBE is unable to verify the completeness of the AT&T locations depicted in accordance with the CI/ASCE Standard 38-02.




205 W. WACKER DRIVE
SUITE 1020
CHICAGO, IL 60606
(312) 704-1970

—●—●—●—●—	FORCE MAIN
—○—○—○—○—	CABLE TV
—T—T—T—T—	TELEPHONE
—G—G—G—G—	GAS
—E—E—E—E—	ELECTRIC
—W—W—W—W—	WATER
—FO—FO—FO—FO—	FIBER OPTIC
—●—	TBE TEST HOLE

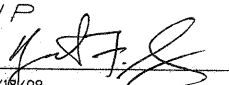
Utilities shown in color on these plans as depicted in the legend have been investigated by TBE Group, Inc in accordance with SUE Industry Standards. All other information shown has been provided to TBE Group, Inc by others. TBE's SUE QL "B" field investigation was performed from 3/24/08 to 6/13/08. TBE's SUE QL "A" field investigation was performed from 11/19/08 to 2/09/09. Changes to utilities after 6/13/08 may have been made and therefore may result in variances from this plan. Consideration should be given to updating this plan if deemed advisable prior to final design and construction.



- Utility Quality Level "A" : Test Hole
- Utility Quality Level "B" : Designating
- Utility Quality Level "C" : Research with Survey
- Utility Quality Level "D" : Records Research



TBE GROUP, INC.
CIVIL ENGINEERING • TRANSPORTATION • ENVIRONMENTAL
PLANNING • UTILITY ENGINEERING/LOCATING

Checked By: 

Date: 2/18/09

TBE Job No. IL09500274,
284,285,286,288,289
SUE Plan Page: 19 of 21

FILE NAME =	USER NAME =	DESIGNED <i>EG, JP, SW</i>	REVISED <i>Added Test Hole #18 2/18/09</i>
*FILE#	PLOT SCALE =	DRAWN <i>KLC</i>	REVISED
	PLOT DATE = *DATE*	CHECKED <i>KFS</i>	REVISED
		DATE <i>2/18/09</i>	REVISED

STATE OF ILLINOIS
DEPARTMENT OF TRANSPORTATION
AND KANE COUNTY HIGHWAY DEPT.

STEARNS ROAD CORRIDOR		F.A. RTE.	SECTION	COUNTY	TOTAL SHEETS	SHEET NO.
			N/A	KANE/DUPAGE	150	150
SCALE:	SHEET NO.	STA.	TO STA.		CONTRACT NO. 2, 3, 4, 5	
					FED. ROAD DIST. NO. [ILLINOIS] Job No.:	