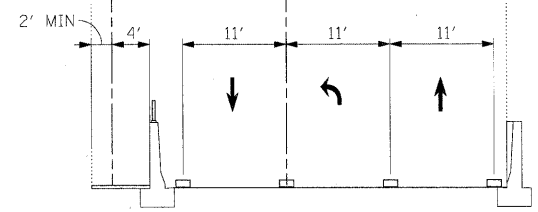
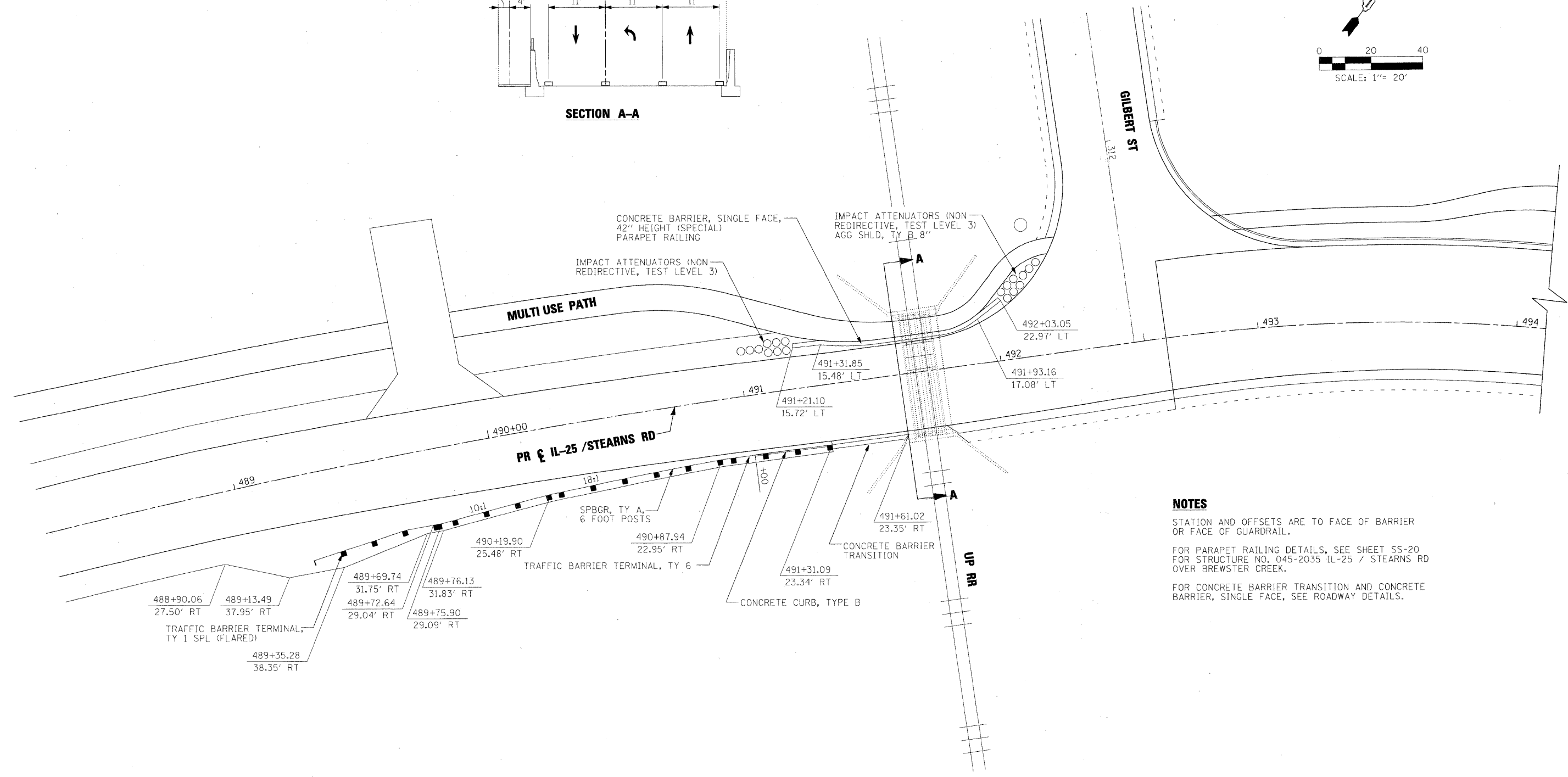
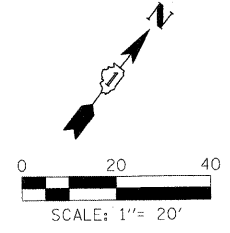


PR & MULTI USE PATH PR & IL 25 / STEARNS RD



SECTION A-A



NOTES

STATION AND OFFSETS ARE TO FACE OF BARRIER OR FACE OF GUARDRAIL.
 FOR PARAPET RAILING DETAILS, SEE SHEET SS-20 FOR STRUCTURE NO. 045-2035 IL-25 / STEARNS RD OVER BREWSTER CREEK.
 FOR CONCRETE BARRIER TRANSITION AND CONCRETE BARRIER, SINGLE FACE, SEE ROADWAY DETAILS.

x:\3200s\3944\engineering\roadway\documents\roadway\detail\drawings\pripin_abc_stn_cr_det_01.dgn

FILE NAME = \$FILES\$	USER NAME = \$USER\$	DESIGNED - XXX	REVISED -	KANE COUNTY DIVISION OF TRANSPORTATION	IL 25 / STEARNS ROAD GUARDRAIL DETAIL			F.A. RTE. 361	SECTION 06-00214-15-BR	COUNTY KANE/DUPAGE	TOTAL SHEETS 545	SHEET NO. 231
	PLOT SCALE = 20.00' / IN.	CHECKED - JNR	REVISED -		SCALE:	SHEET NO.	OF SHEETS	STA.	TO STA.	CONTRACT NO. 63074		
PLOT DATE = 4/27/2009	DATE - 3/31/09	REVISED -	REVISED -		FED. ROAD DIST. NO. ILLINOIS FED. AID PROJECT							