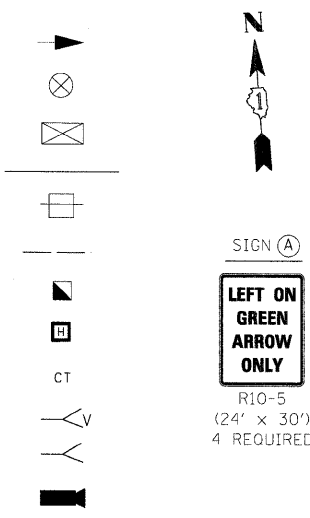


**TEMPORARY TRAFFIC SIGNAL LEGEND**

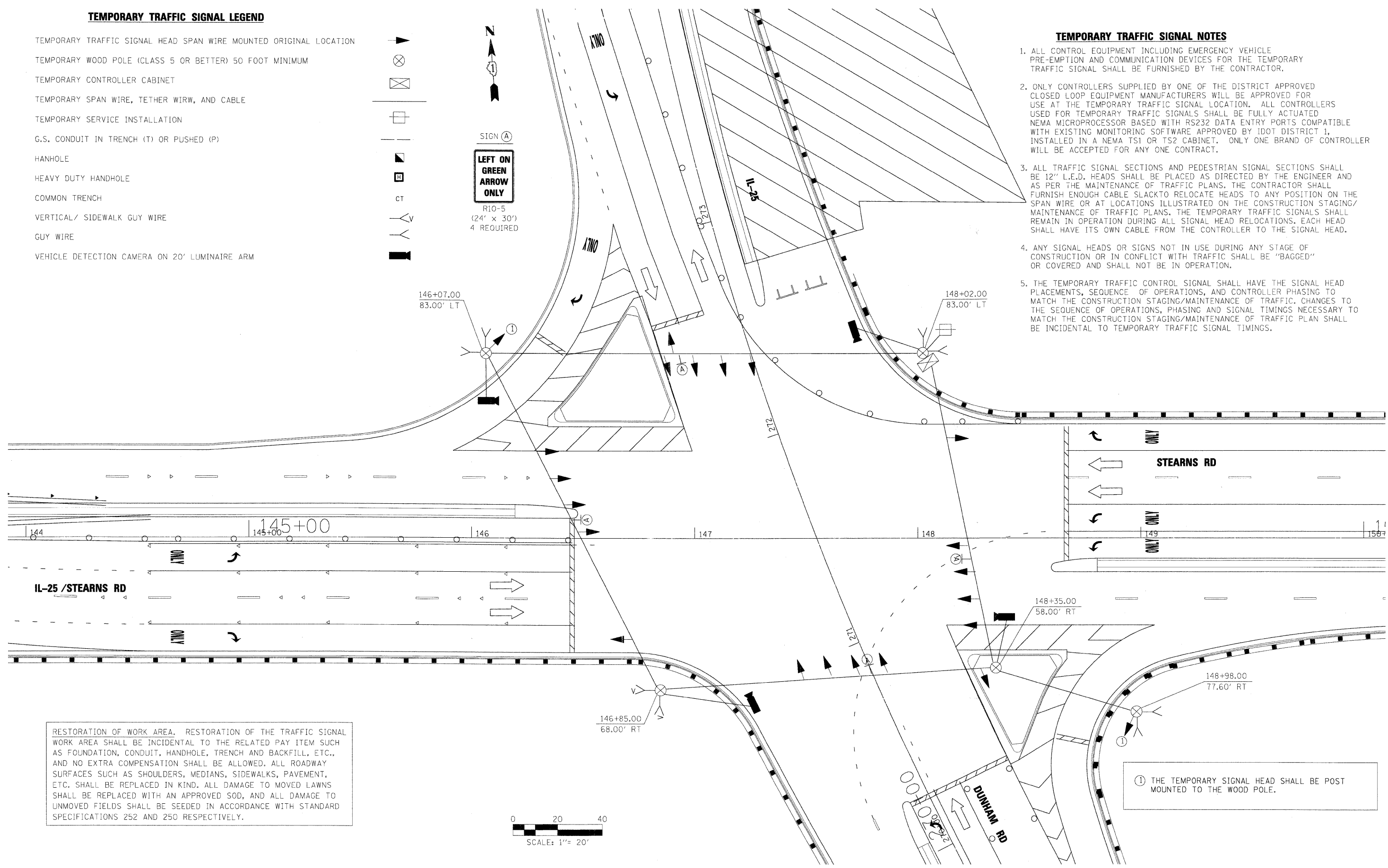
- TEMPORARY TRAFFIC SIGNAL HEAD SPAN WIRE MOUNTED ORIGINAL LOCATION
- TEMPORARY WOOD POLE (CLASS 5 OR BETTER) 50 FOOT MINIMUM
- TEMPORARY CONTROLLER CABINET
- TEMPORARY SPAN WIRE, TETHER WIRW, AND CABLE
- TEMPORARY SERVICE INSTALLATION
- G.S. CONDUIT IN TRENCH (T) OR PUSHED (P)
- HANHOLE
- HEAVY DUTY HANDHOLE
- COMMON TRENCH
- VERTICAL/ SIDEWALK GUY WIRE
- GUY WIRE
- VEHICLE DETECTION CAMERA ON 20' LUMINAIRE ARM



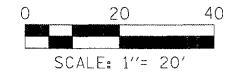
SIGN (A)  
**LEFT ON GREEN  
 ARROW  
 ONLY**  
 R10-5  
 (24' x 30')  
 4 REQUIRED

**TEMPORARY TRAFFIC SIGNAL NOTES**

1. ALL CONTROL EQUIPMENT INCLUDING EMERGENCY VEHICLE PRE-EMPTION AND COMMUNICATION DEVICES FOR THE TEMPORARY TRAFFIC SIGNAL SHALL BE FURNISHED BY THE CONTRACTOR.
2. ONLY CONTROLLERS SUPPLIED BY ONE OF THE DISTRICT APPROVED CLOSED LOOP EQUIPMENT MANUFACTURERS WILL BE APPROVED FOR USE AT THE TEMPORARY TRAFFIC SIGNAL LOCATION. ALL CONTROLLERS USED FOR TEMPORARY TRAFFIC SIGNALS SHALL BE FULLY ACTUATED NEMA MICROPROCESSOR BASED WITH RS232 DATA ENTRY PORTS COMPATIBLE WITH EXISTING MONITORING SOFTWARE APPROVED BY IDOT DISTRICT 1, INSTALLED IN A NEMA TS1 OR TS2 CABINET. ONLY ONE BRAND OF CONTROLLER WILL BE ACCEPTED FOR ANY ONE CONTRACT.
3. ALL TRAFFIC SIGNAL SECTIONS AND PEDESTRIAN SIGNAL SECTIONS SHALL BE 12" L.E.D. HEADS SHALL BE PLACED AS DIRECTED BY THE ENGINEER AND AS PER THE MAINTENANCE OF TRAFFIC PLANS. THE CONTRACTOR SHALL FURNISH ENOUGH CABLE SLACK TO RELOCATE HEADS TO ANY POSITION ON THE SPAN WIRE OR AT LOCATIONS ILLUSTRATED ON THE CONSTRUCTION STAGING/ MAINTENANCE OF TRAFFIC PLANS. THE TEMPORARY TRAFFIC SIGNALS SHALL REMAIN IN OPERATION DURING ALL SIGNAL HEAD RELOCATIONS. EACH HEAD SHALL HAVE ITS OWN CABLE FROM THE CONTROLLER TO THE SIGNAL HEAD.
4. ANY SIGNAL HEADS OR SIGNS NOT IN USE DURING ANY STAGE OF CONSTRUCTION OR IN CONFLICT WITH TRAFFIC SHALL BE "BAGGED" OR COVERED AND SHALL NOT BE IN OPERATION.
5. THE TEMPORARY TRAFFIC CONTROL SIGNAL SHALL HAVE THE SIGNAL HEAD PLACEMENTS, SEQUENCE OF OPERATIONS, AND CONTROLLER PHASING TO MATCH THE CONSTRUCTION STAGING/MAINTENANCE OF TRAFFIC. CHANGES TO THE SEQUENCE OF OPERATIONS, PHASING AND SIGNAL TIMINGS NECESSARY TO MATCH THE CONSTRUCTION STAGING/MAINTENANCE OF TRAFFIC PLAN SHALL BE INCIDENTAL TO TEMPORARY TRAFFIC SIGNAL TIMINGS.



RESTORATION OF WORK AREA. RESTORATION OF THE TRAFFIC SIGNAL WORK AREA SHALL BE INCIDENTAL TO THE RELATED PAY ITEM SUCH AS FOUNDATION, CONDUIT, HANDHOLE, TRENCH AND BACKFILL, ETC., AND NO EXTRA COMPENSATION SHALL BE ALLOWED. ALL ROADWAY SURFACES SUCH AS SHOULDERS, MEDIANS, SIDEWALKS, PAVEMENT, ETC. SHALL BE REPLACED IN KIND. ALL DAMAGE TO MOVED LAWNS SHALL BE REPLACED WITH AN APPROVED SOD, AND ALL DAMAGE TO UNMOVED FIELDS SHALL BE SEEDED IN ACCORDANCE WITH STANDARD SPECIFICATIONS 252 AND 250 RESPECTIVELY.



① THE TEMPORARY SIGNAL HEAD SHALL BE POST MOUNTED TO THE WOOD POLE.

x:\39500s\3944\engineering\documents\signals\prp\in\_abc\dun\_temp\_ts\_pp01.dgn

FILE NAME = #FILES#	USER NAME = #USER#	DESIGNED - GHT/MPM	REVISED -	<b>KANE COUNTY DIVISION OF TRANSPORTATION</b>	<b>TEMPORARY TRAFFIC SIGNAL INSTALLATION PLAN IL. RTE. 25 / STEARNS RD AT IL. RTE. 25 / DUNHAM RD</b>	F.A. RTE.	SECTION	COUNTY	TOTAL SHEETS	SHEET NO.	
	PLOT SCALE = 20.00' / IN.	DRAWN - VLM	REVISED -			361	06-00214-15-BR	KANE/DUPAGE	545	258	
	PLOT DATE = 3/30/2009	CHECKED - GHT	REVISED -			CONTRACT NO. 63074					
		DATE - 3/31/09	REVISED -			FED. ROAD DIST. NO. ILLINOIS FED. AID PROJECT					