

PROJECT Stearns Road Improvements, Kane County, Illinois

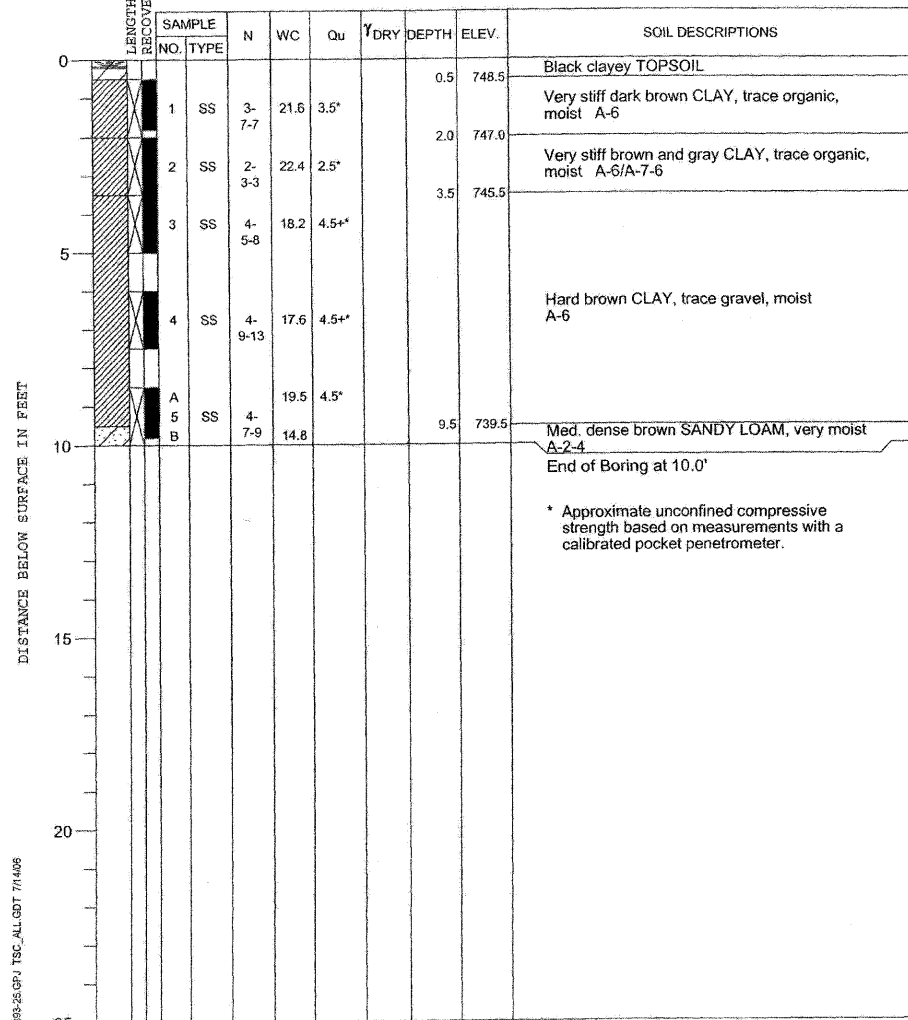
CLIENT Alfred Benesch & Company, Chicago, Illinois



BORING DP1-1 DATE STARTED 7-6-06 DATE COMPLETED 7-6-06 JOB L-60,393

ELEVATIONS WATER LEVEL OBSERVATIONS
 GROUND SURFACE 749.0 WHILE DRILLING Dry
 END OF BORING 739.0 AT END OF BORING Dry
 24 HOURS

Detention Pond #1



DRILL RIG NO. 53

Division lines between deposits represent approximate boundaries between soil types; in-situ, the transition may be gradual.

PROJECT Stearns Road Improvements, Kane County, Illinois

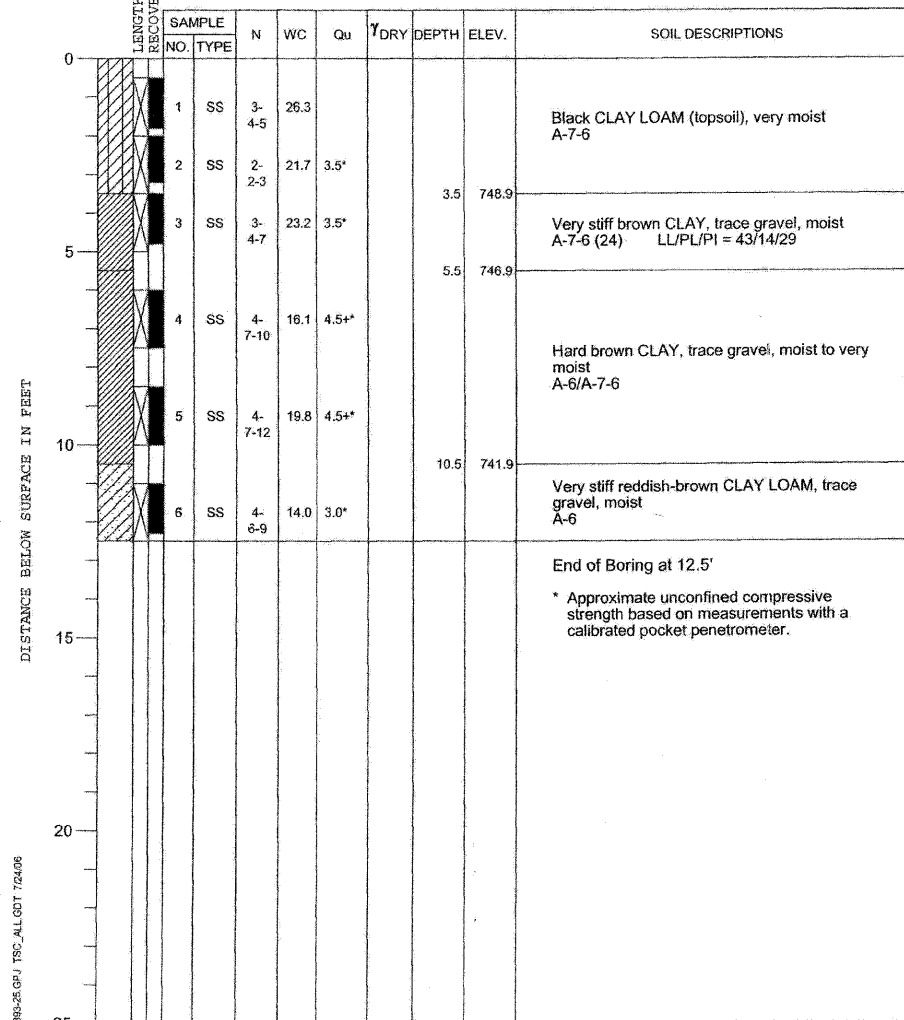
CLIENT Alfred Benesch & Company, Chicago, Illinois



BORING DP1-2 DATE STARTED 7-7-06 DATE COMPLETED 7-7-06 JOB L-60,393

ELEVATIONS WATER LEVEL OBSERVATIONS
 GROUND SURFACE 752.4 WHILE DRILLING Dry
 END OF BORING 739.9 AT END OF BORING Dry
 24 HOURS

Detention Pond #1



DRILL RIG NO. 53

Division lines between deposits represent approximate boundaries between soil types; in-situ, the transition may be gradual.

PROJECT Stearns Road Improvements, Kane County, Illinois

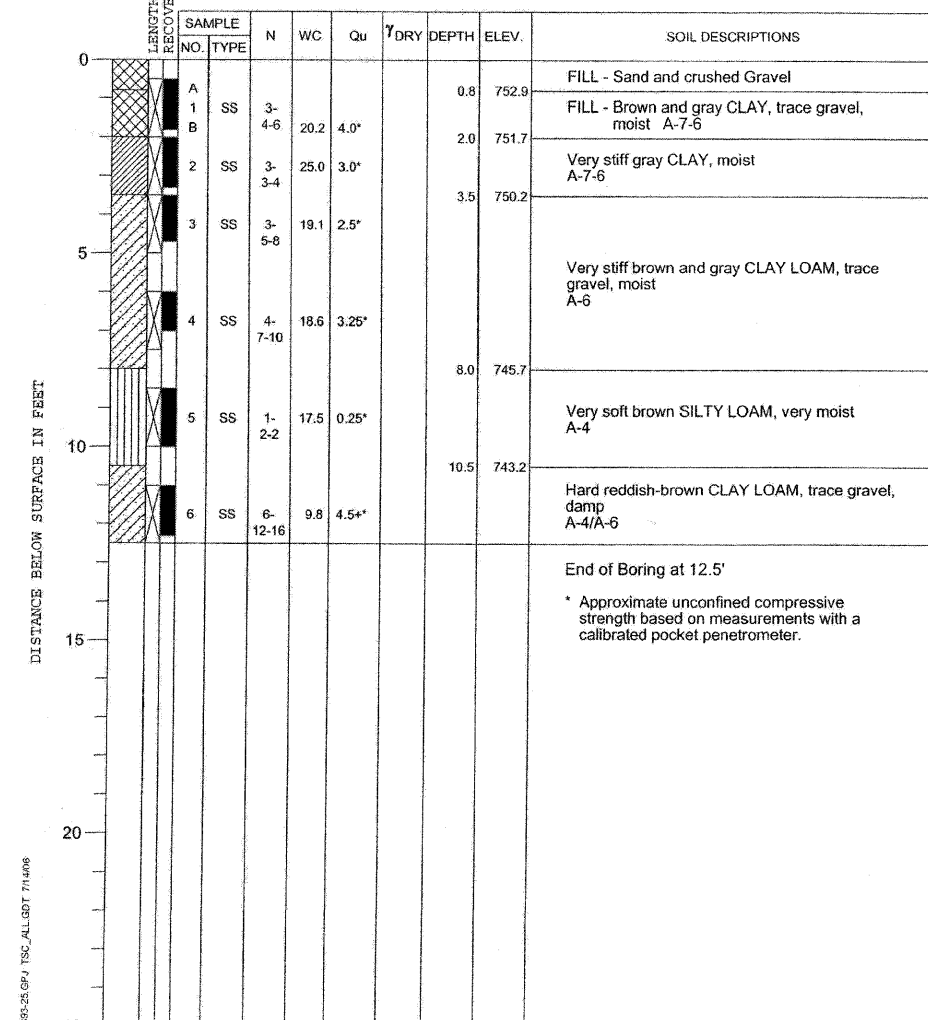
CLIENT Alfred Benesch & Company, Chicago, Illinois



BORING DP1-3 DATE STARTED 7-7-06 DATE COMPLETED 7-7-06 JOB L-60,393

ELEVATIONS WATER LEVEL OBSERVATIONS
 GROUND SURFACE 753.7 WHILE DRILLING Dry
 END OF BORING 741.2 AT END OF BORING Dry
 24 HOURS

Detention Pond #1



DRILL RIG NO. 53

Division lines between deposits represent approximate boundaries between soil types; in-situ, the transition may be gradual.

x:\39200\3944\engineering_documents\geotechnical\geotech\ABC_SB_07.dgn