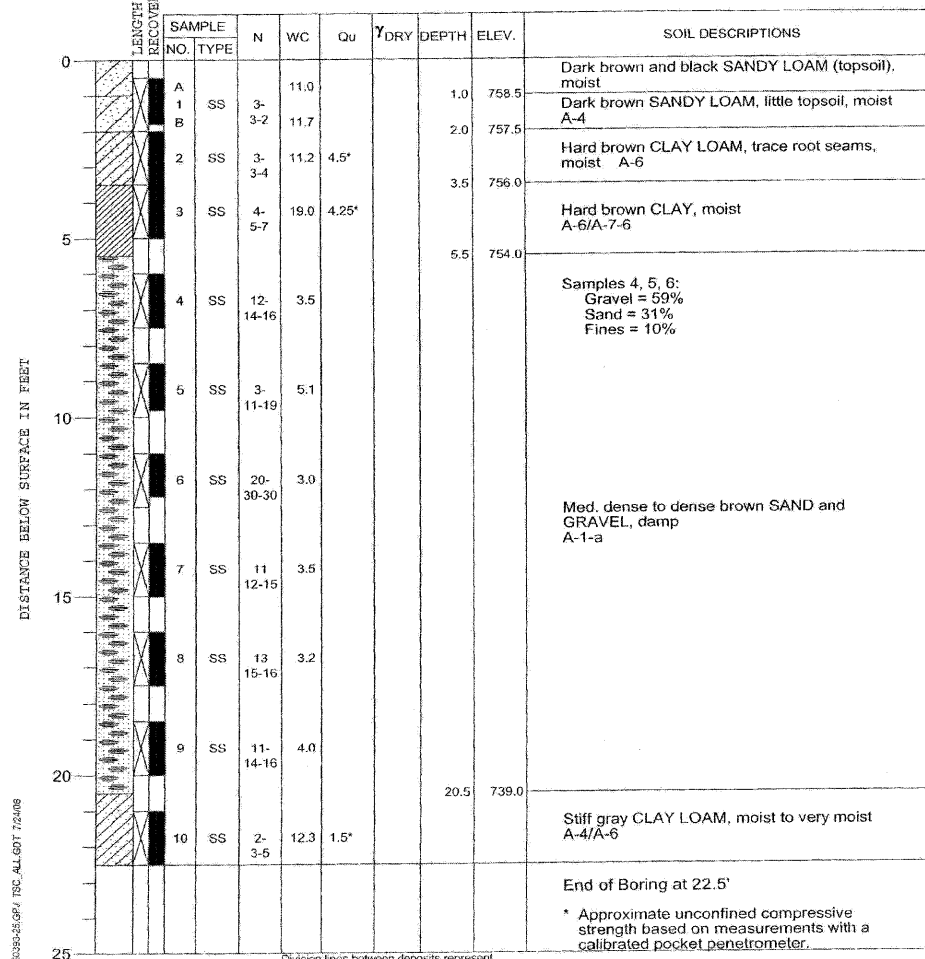


PROJECT **Stearns Road Improvements, Kane County, Illinois**  
 CLIENT **Alfred Benesch & Company, Chicago, Illinois**  
 BORING **DP19-4** DATE STARTED **7-6-06** DATE COMPLETED **7-6-06** JOB **L-60,393**  
 ELEVATIONS WATER LEVEL OBSERVATIONS  
 GROUND SURFACE **759.5** WHILE DRILLING **Dry**  
 END OF BORING **737.0** AT END OF BORING **Dry**  
 24 HOURS



Detention Pond #19

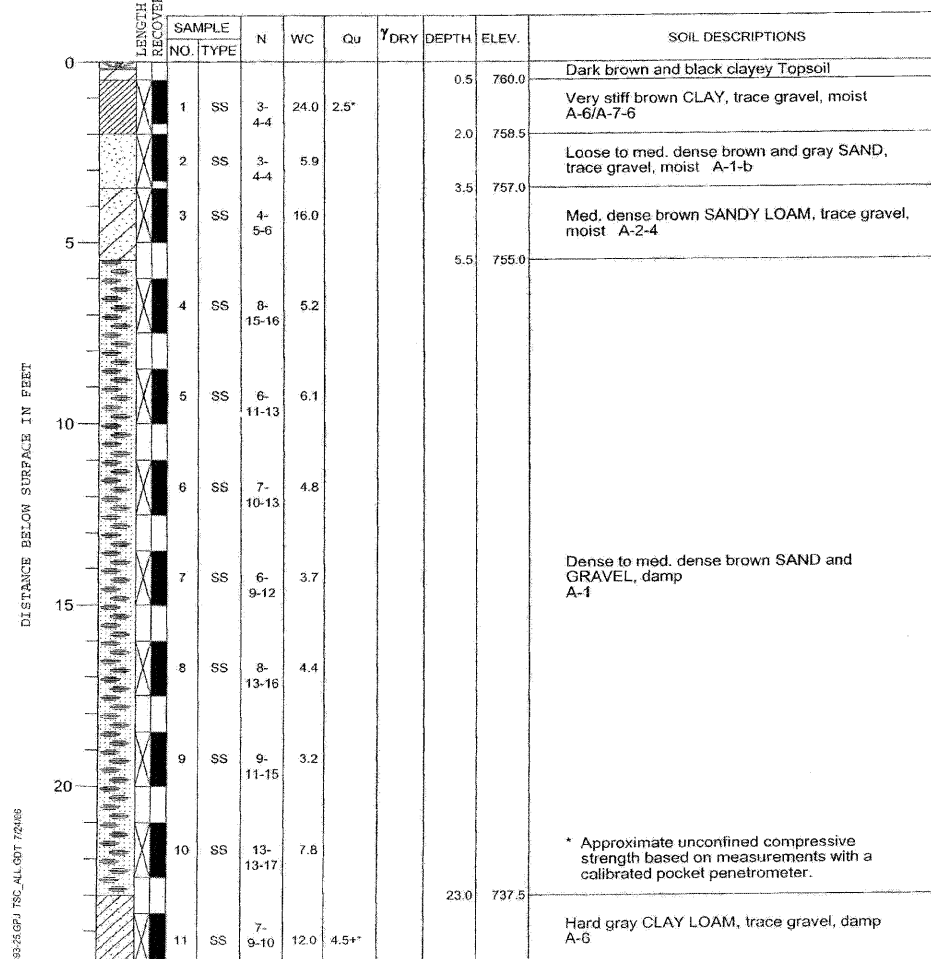


DRILL RIG NO. **53**  
 Division lines between deposits represent approximate boundaries between soil types; in-situ, the transition may be gradual.  
 \* Approximate unconfined compressive strength based on measurements with a calibrated pocket penetrometer.

PROJECT **Stearns Road Improvements, Kane County, Illinois**  
 CLIENT **Alfred Benesch & Company, Chicago, Illinois**  
 BORING **DP19-5** DATE STARTED **7-6-06** DATE COMPLETED **7-6-06** JOB **L-60,393**  
 ELEVATIONS WATER LEVEL OBSERVATIONS  
 GROUND SURFACE **760.5** WHILE DRILLING **Dry**  
 END OF BORING **735.5** AT END OF BORING **Dry**  
 24 HOURS



Detention Pond #19

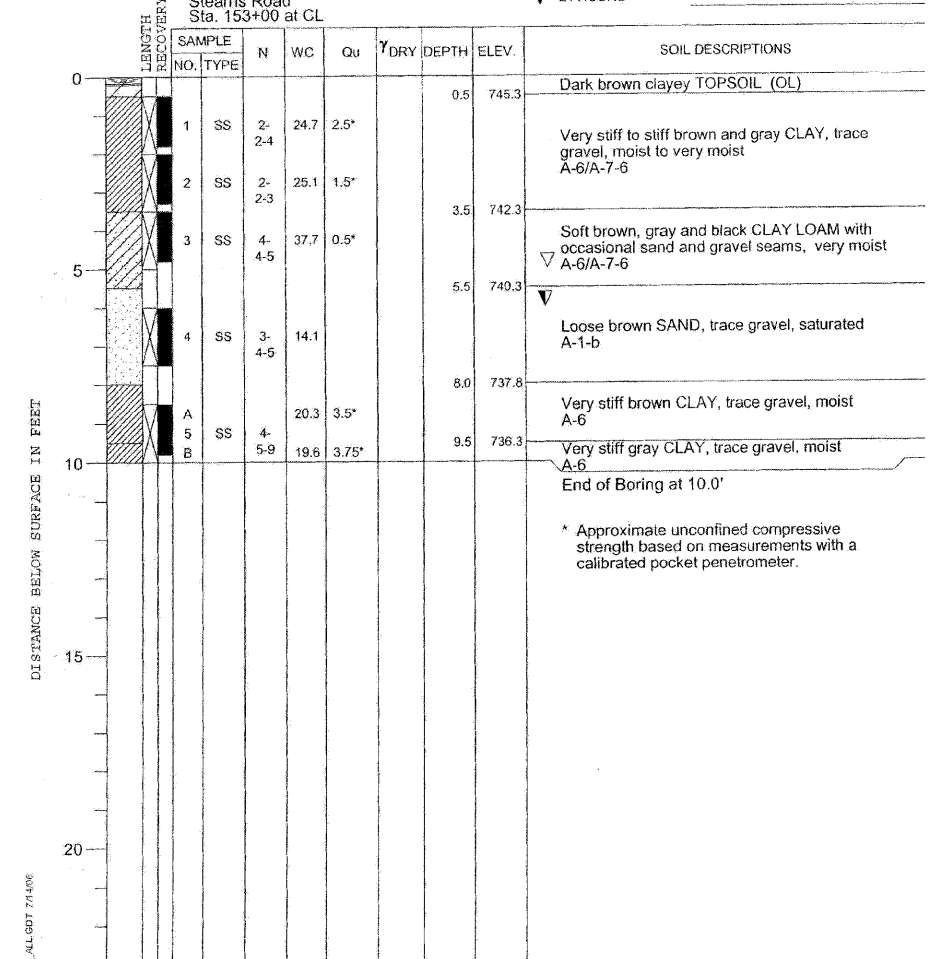


DRILL RIG NO. **53**  
 Division lines between deposits represent approximate boundaries between soil types; in-situ, the transition may be gradual.  
 \* Approximate unconfined compressive strength based on measurements with a calibrated pocket penetrometer.

PROJECT **Stearns Road Improvements, Kane County, Illinois**  
 CLIENT **Alfred Benesch & Company, Chicago, Illinois**  
 BORING **ST-1** DATE STARTED **7-7-06** DATE COMPLETED **7-7-06** JOB **L-60,393**  
 ELEVATIONS WATER LEVEL OBSERVATIONS  
 GROUND SURFACE **745.8** WHILE DRILLING **6.0'**  
 END OF BORING **735.8** AT END OF BORING **5.0'**  
 24 HOURS



Stearns Road Sta. 153+00 at CL



DRILL RIG NO. **53**  
 Division lines between deposits represent approximate boundaries between soil types; in-situ, the transition may be gradual.  
 \* Approximate unconfined compressive strength based on measurements with a calibrated pocket penetrometer.

x:\391005\39144\engineering\documents\geotechnical\geotech\_abc\_sb\_09.dgn