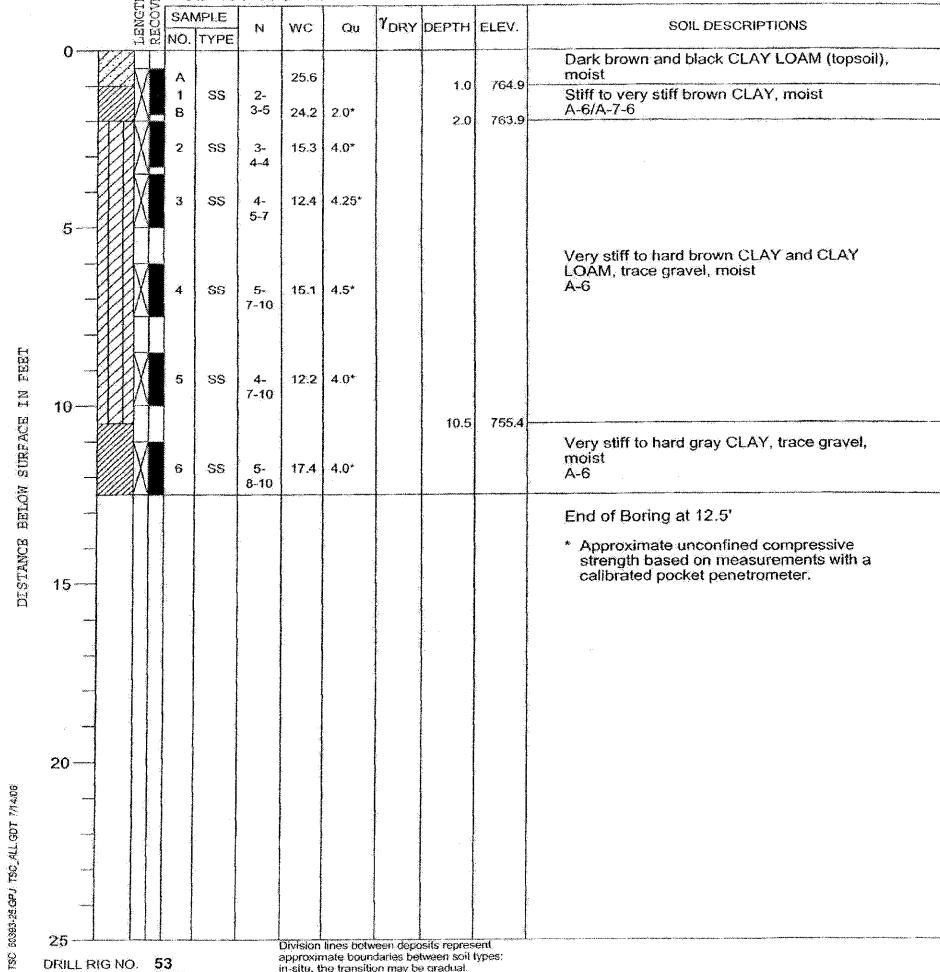


PROJECT Stearns Road Improvements, Kane County, Illinois
 CLIENT Alfred Benesch & Company, Chicago, Illinois
 BORING ST-5 DATE STARTED 7-6-06 DATE COMPLETED 7-6-06 JOB L-60,393
 ELEVATIONS WATER LEVEL OBSERVATIONS
 GROUND SURFACE 765.9 ▽ WHILE DRILLING Dry
 END OF BORING 753.4 ▽ AT END OF BORING Dry
 ▽ 24 HOURS



Stearns Road
 Sta. 164+50 at CL



Division lines between deposits represent approximate boundaries between soil types; in-situ, the transition may be gradual.

DRILL RIG NO. 53

x:\3900a\3944\engineering_documents\Geotechnical\geotech_ABC_SB.11.dgn

FILE NAME =	USER NAME = *USER*	DESIGNED - VLM	REVISED -	KANE COUNTY DIVISION OF TRANSPORTATION	SOIL BORING LOGS				F.A. RTE.	SECTION	COUNTY	TOTAL SHEETS	SHEET NO.
#FILES#	PLOT SCALE = 1.0000' / IN.	DRAWN - VLM	REVISED -		361	06-00214-15-BR	KANE/DUPAGE	545	287				
	PLOT DATE = 3/30/2009	CHECKED - JRM	REVISED -		CONTRACT NO. 63074				FED. ROAD DIST. NO.	ILLINOIS FED. AID PROJECT			
		DATE - 3/31/09	REVISED -	SCALE:	SHEET NO.	OF	SHEETS	STA.	TO STA.				